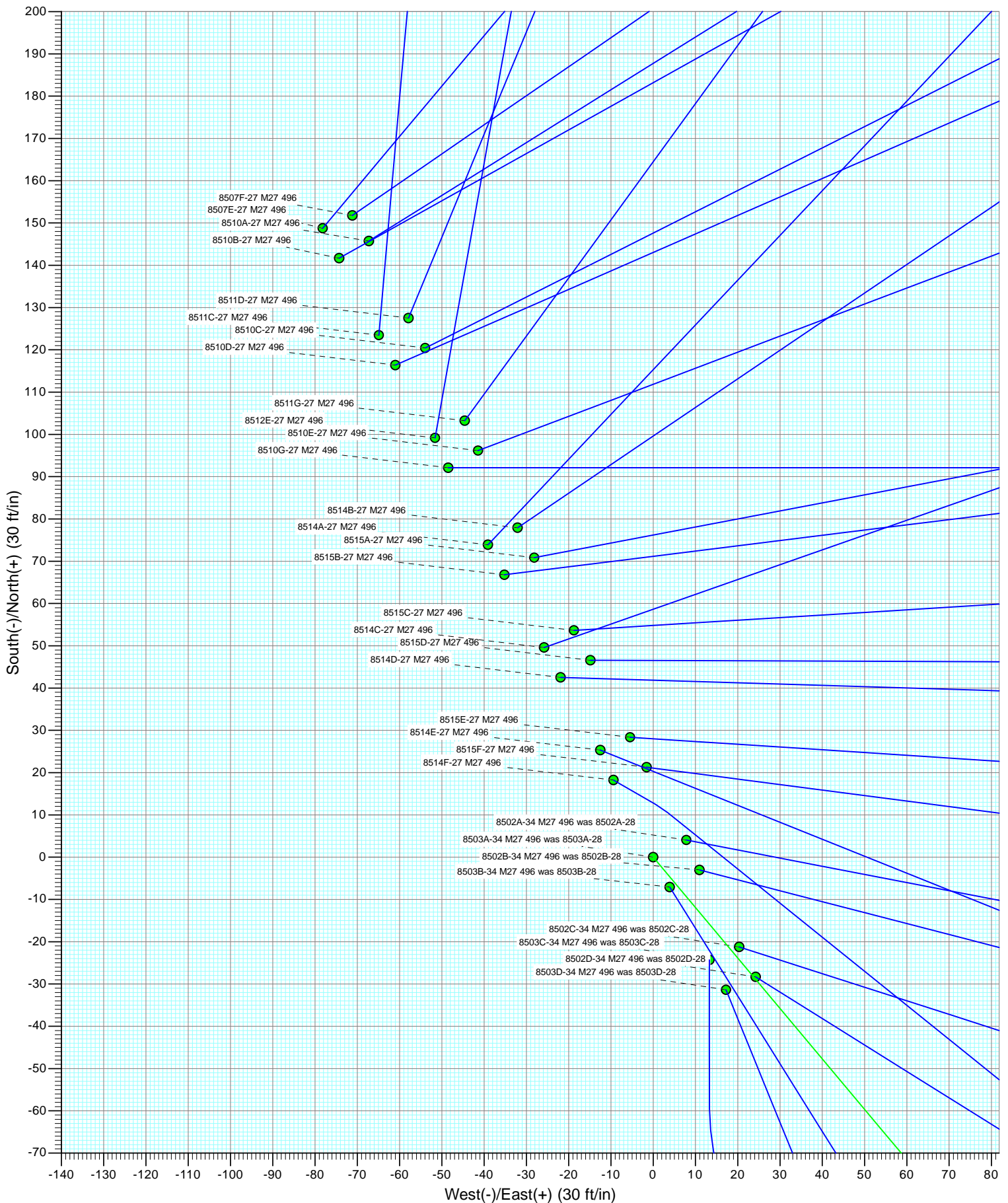




<div>Plan #2</div> <div>8503A-34 M27 496 was 8503A-28</div> <div>15xoc: LR</div> <div>KBE @ 8121.0R (Original Well Elev)</div> <div>K @ 8099.0</div> <div>North American Datum 1983</div> <div>Well 8503A-34 M27 496 was 8503A-28, True North</div>							
Type	Target	Target	Azimuth	Origin Type	N/S	E/W	From TVD
Target		M27 496 8503A-28 PBHL	141.54	Slot			0.0
Name		TVD	+/-N/S	+/-E/W		Latitude	Longitude
M27 496 8503A-28 TGT		7525.0	-571.8	494.9	39° 39' 57.36 N	106° 9' 33.45 W	
M27 496 8503A-28 PBHL		11359.0	-581.4	462.2	39° 39' 57.26 N	106° 9' 33.67 W	

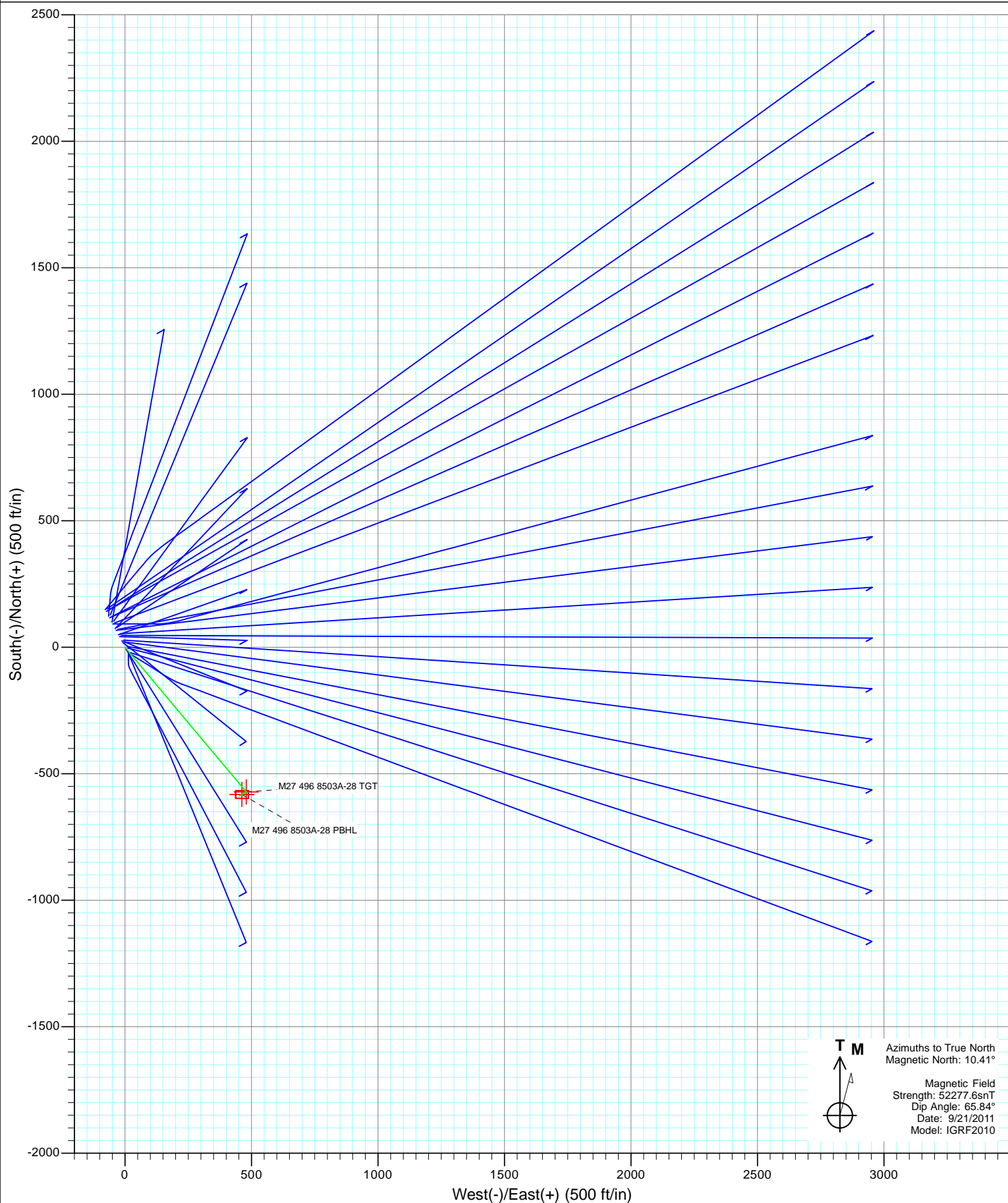


Project: Story Gulch  
Site: S27-T4S-R96W (M27 496)  
Well: 8503A-34 M27 496 was 8503A-28  
Wellbore: DD  
Design: Plan #2



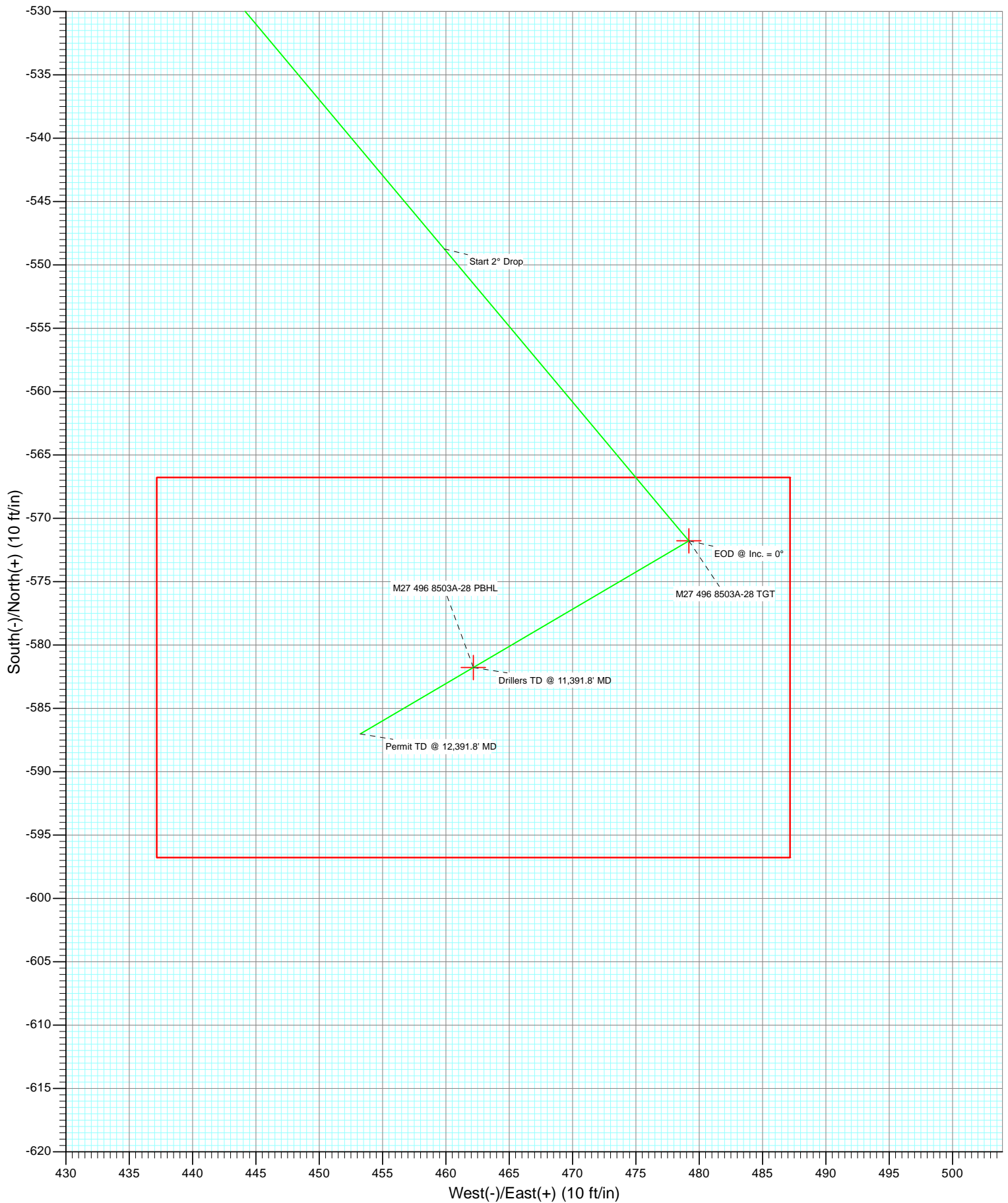


Project: Story Gulch  
Site: S27-T4S-R96W (M27 496)  
Well: 8503A-34 M27 496 was 8503A-28  
Wellbore: DD  
Design: Plan #2





Project: Story Gulch  
Site: S27-T4S-R96W (M27 496)  
Well: 8503A-34 M27 496 was 8503A-28  
Wellbore: DD  
Design: Plan #2



# Cathedral Energy Services

## Planning Report

<b>Database:</b>	USA EDM 5000 Multi Users DB	<b>Local Co-ordinate Reference:</b>	Well 8503A-34 M27 496 was 8503A-28
<b>Company:</b>	EnCana Oil & Gas (USA) Inc	<b>TVD Reference:</b>	KBE @ 8121.0ft (Original Well Elev)
<b>Project:</b>	Story Gulch	<b>MD Reference:</b>	KBE @ 8121.0ft (Original Well Elev)
<b>Site:</b>	S27-T4S-R96W (M27 496)	<b>North Reference:</b>	True
<b>Well:</b>	8503A-34 M27 496 was 8503A-28	<b>Survey Calculation Method:</b>	Minimum Curvature
<b>Wellbore:</b>	DD		
<b>Design:</b>	Plan #2		

<b>Project</b>	Story Gulch		
<b>Map System:</b>	US State Plane 1983	<b>System Datum:</b>	Mean Sea Level
<b>Geo Datum:</b>	North American Datum 1983		
<b>Map Zone:</b>	Colorado Central Zone		

Site		S27-T4S-R96W (M27 496)			
Site Position:		Northing:	1,678,990.24 ft	Latitude:	39° 40' 3.01 N
From:	Lat/Long	Easting:	2,251,008.33 ft	Longitude:	108° 9' 39.57 W
Position Uncertainty:	0.0 ft	Slot Radius:	13.200 in	Grid Convergence:	-1.68 °

Well	8503A-34 M27 496 was 8503A-28					
Well Position	+N/-S	0.0 ft	Northing:	1,678,990.24 ft	Latitude:	39° 40' 3.01 N
	+E/-W	0.0 ft	Easting:	2,251,007.54 ft	Longitude:	108° 9' 39.58 W
Position Uncertainty		0.0 ft	Wellhead Elevation:	ft	Ground Level:	8,099.0 ft

<b>Wellbore</b>	DD				
<b>Magnetics</b>	<b>Model Name</b>	<b>Sample Date</b>	<b>Declination (°)</b>	<b>Dip Angle (°)</b>	<b>Field Strength (nT)</b>
	IGRF2010	9/21/2011	10.41	65.84	52,278

<b>Design</b>	Plan #2			
<b>Audit Notes:</b>				
<b>Version:</b>	<b>Phase:</b>	PLAN	<b>Tie On Depth:</b>	0.0
<b>Vertical Section:</b>	<b>Depth From (TVD) (ft)</b>	<b>+N/-S (ft)</b>	<b>+E/-W (ft)</b>	<b>Direction (°)</b>
	0.0	0.0	0.0	141.54

<b>Plan Sections</b>										
Measured Depth (ft)	Inclination (°)	Azimuth (°)	Vertical Depth (ft)	+N/-S (ft)	+E/-W (ft)	Dogleg Rate (°/100ft)	Build Rate (°/100ft)	Turn Rate (°/100ft)	TFO (°)	Target
0.0	0.00	0.00	0.0	0.0	0.0	0.00	0.00	0.00	0.00	
2,000.0	0.00	0.00	2,000.0	0.0	0.0	0.00	0.00	0.00	0.00	
2,415.4	8.31	140.04	2,413.9	-23.0	19.3	2.00	2.00	0.00	140.04	
7,162.3	8.31	140.04	7,111.1	-548.7	459.9	0.00	0.00	0.00	0.00	
7,577.7	0.00	0.00	7,525.0	-571.8	479.2	2.00	-2.00	0.00	180.00	M27 496 8503A-28 T
11,391.8	0.59	239.57	11,339.0	-581.8	462.2	0.02	0.02	-3.16	239.57	M27 496 8503A-28 PI
12,391.8	0.59	239.57	12,339.0	-587.0	453.2	0.00	0.00	0.00	0.00	

# Cathedral Energy Services

## Planning Report

<b>Database:</b>	USA EDM 5000 Multi Users DB	<b>Local Co-ordinate Reference:</b>	Well 8503A-34 M27 496 was 8503A-28
<b>Company:</b>	EnCana Oil & Gas (USA) Inc	<b>TVD Reference:</b>	KBE @ 8121.0ft (Original Well Elev)
<b>Project:</b>	Story Gulch	<b>MD Reference:</b>	KBE @ 8121.0ft (Original Well Elev)
<b>Site:</b>	S27-T4S-R96W (M27 496)	<b>North Reference:</b>	True
<b>Well:</b>	8503A-34 M27 496 was 8503A-28	<b>Survey Calculation Method:</b>	Minimum Curvature
<b>Wellbore:</b>	DD		
<b>Design:</b>	Plan #2		

### Planned Survey

Measured Depth (ft)	Inclination (°)	Azimuth (°)	Vertical Depth (ft)	+N/-S (ft)	+E/-W (ft)	Vertical Section (ft)	Dogleg Rate (°/100ft)	Build Rate (°/100ft)	Comments / Formations
0.0	0.00	0.00	0.0	0.0	0.0	0.0	0.00	0.00	
100.0	0.00	0.00	100.0	0.0	0.0	0.0	0.00	0.00	
200.0	0.00	0.00	200.0	0.0	0.0	0.0	0.00	0.00	
300.0	0.00	0.00	300.0	0.0	0.0	0.0	0.00	0.00	
400.0	0.00	0.00	400.0	0.0	0.0	0.0	0.00	0.00	
500.0	0.00	0.00	500.0	0.0	0.0	0.0	0.00	0.00	
600.0	0.00	0.00	600.0	0.0	0.0	0.0	0.00	0.00	
700.0	0.00	0.00	700.0	0.0	0.0	0.0	0.00	0.00	
800.0	0.00	0.00	800.0	0.0	0.0	0.0	0.00	0.00	
900.0	0.00	0.00	900.0	0.0	0.0	0.0	0.00	0.00	
1,000.0	0.00	0.00	1,000.0	0.0	0.0	0.0	0.00	0.00	
1,034.0	0.00	0.00	1,034.0	0.0	0.0	0.0	0.00	0.00	A_GROOVE (TVD)
1,100.0	0.00	0.00	1,100.0	0.0	0.0	0.0	0.00	0.00	
1,188.0	0.00	0.00	1,188.0	0.0	0.0	0.0	0.00	0.00	B_GROOVE (TVD)
1,200.0	0.00	0.00	1,200.0	0.0	0.0	0.0	0.00	0.00	
1,300.0	0.00	0.00	1,300.0	0.0	0.0	0.0	0.00	0.00	
1,400.0	0.00	0.00	1,400.0	0.0	0.0	0.0	0.00	0.00	
1,500.0	0.00	0.00	1,500.0	0.0	0.0	0.0	0.00	0.00	
1,600.0	0.00	0.00	1,600.0	0.0	0.0	0.0	0.00	0.00	
1,700.0	0.00	0.00	1,700.0	0.0	0.0	0.0	0.00	0.00	
1,800.0	0.00	0.00	1,800.0	0.0	0.0	0.0	0.00	0.00	
1,900.0	0.00	0.00	1,900.0	0.0	0.0	0.0	0.00	0.00	
2,000.0	0.00	0.00	2,000.0	0.0	0.0	0.0	0.00	0.00	KOP @ 2,000'
2,100.0	2.00	140.04	2,100.0	-1.3	1.1	1.7	2.00	2.00	
2,147.1	2.94	140.04	2,147.0	-2.9	2.4	3.8	2.00	2.00	Garden Gulch Member (TVD)
2,200.0	4.00	140.04	2,199.8	-5.3	4.5	7.0	2.00	2.00	
2,300.0	6.00	140.04	2,299.5	-12.0	10.1	15.7	2.00	2.00	
2,400.0	8.00	140.04	2,398.7	-21.4	17.9	27.9	2.00	2.00	
2,415.4	8.31	140.04	2,413.9	-23.0	19.3	30.1	2.00	2.00	EOB @ Inc. = 8.31°
2,500.0	8.31	140.04	2,497.7	-32.4	27.2	42.3	0.00	0.00	
2,600.0	8.31	140.04	2,596.6	-43.5	36.4	56.7	0.00	0.00	
2,700.0	8.31	140.04	2,695.6	-54.6	45.7	71.2	0.00	0.00	
2,800.0	8.31	140.04	2,794.5	-65.6	55.0	85.6	0.00	0.00	
2,900.0	8.31	140.04	2,893.5	-76.7	64.3	100.1	0.00	0.00	
3,000.0	8.31	140.04	2,992.4	-87.8	73.6	114.5	0.00	0.00	
3,100.0	8.31	140.04	3,091.4	-98.9	82.8	128.9	0.00	0.00	
3,200.0	8.31	140.04	3,190.3	-109.9	92.1	143.4	0.00	0.00	
3,300.0	8.31	140.04	3,289.3	-121.0	101.4	157.8	0.00	0.00	
3,400.0	8.31	140.04	3,388.2	-132.1	110.7	172.3	0.00	0.00	
3,500.0	8.31	140.04	3,487.2	-143.2	120.0	186.7	0.00	0.00	
3,600.0	8.31	140.04	3,586.1	-154.2	129.3	201.2	0.00	0.00	
3,700.0	8.31	140.04	3,685.1	-165.3	138.5	215.6	0.00	0.00	
3,800.0	8.31	140.04	3,784.0	-176.4	147.8	230.0	0.00	0.00	
3,900.0	8.31	140.04	3,883.0	-187.5	157.1	244.5	0.00	0.00	
4,000.0	8.31	140.04	3,981.9	-198.5	166.4	258.9	0.00	0.00	
4,100.0	8.31	140.04	4,080.9	-209.6	175.7	273.4	0.00	0.00	
4,200.0	8.31	140.04	4,179.8	-220.7	184.9	287.8	0.00	0.00	
4,300.0	8.31	140.04	4,278.8	-231.8	194.2	302.3	0.00	0.00	
4,400.0	8.31	140.04	4,377.7	-242.8	203.5	316.7	0.00	0.00	
4,500.0	8.31	140.04	4,476.7	-253.9	212.8	331.2	0.00	0.00	
4,600.0	8.31	140.04	4,575.6	-265.0	222.1	345.6	0.00	0.00	
4,700.0	8.31	140.04	4,674.6	-276.0	231.3	360.0	0.00	0.00	

# Cathedral Energy Services

## Planning Report

<b>Database:</b>	USA EDM 5000 Multi Users DB	<b>Local Co-ordinate Reference:</b>	Well 8503A-34 M27 496 was 8503A-28
<b>Company:</b>	EnCana Oil & Gas (USA) Inc	<b>TVD Reference:</b>	KBE @ 8121.0ft (Original Well Elev)
<b>Project:</b>	Story Gulch	<b>MD Reference:</b>	KBE @ 8121.0ft (Original Well Elev)
<b>Site:</b>	S27-T4S-R96W (M27 496)	<b>North Reference:</b>	True
<b>Well:</b>	8503A-34 M27 496 was 8503A-28	<b>Survey Calculation Method:</b>	Minimum Curvature
<b>Wellbore:</b>	DD		
<b>Design:</b>	Plan #2		

### Planned Survey

Measured Depth (ft)	Inclination (°)	Azimuth (°)	Vertical Depth (ft)	+N/-S (ft)	+E/-W (ft)	Vertical Section (ft)	Dogleg Rate (°/100ft)	Build Rate (°/100ft)	Comments / Formations
4,800.0	8.31	140.04	4,773.5	-287.1	240.6	374.5	0.00	0.00	
4,900.0	8.31	140.04	4,872.5	-298.2	249.9	388.9	0.00	0.00	
5,000.0	8.31	140.04	4,971.4	-309.3	259.2	403.4	0.00	0.00	
5,100.0	8.31	140.04	5,070.4	-320.3	268.5	417.8	0.00	0.00	
5,200.0	8.31	140.04	5,169.3	-331.4	277.7	432.3	0.00	0.00	
5,300.0	8.31	140.04	5,268.3	-342.5	287.0	446.7	0.00	0.00	
5,364.4	8.31	140.04	5,332.0	-349.6	293.0	456.0	0.00	0.00	WASATCH_G (TVD)
5,400.0	8.31	140.04	5,367.2	-353.6	296.3	461.2	0.00	0.00	
5,500.0	8.31	140.04	5,466.2	-364.6	305.6	475.6	0.00	0.00	
5,600.0	8.31	140.04	5,565.1	-375.7	314.9	490.0	0.00	0.00	
5,700.0	8.31	140.04	5,664.1	-386.8	324.2	504.5	0.00	0.00	
5,800.0	8.31	140.04	5,763.0	-397.9	333.4	518.9	0.00	0.00	
5,900.0	8.31	140.04	5,862.0	-408.9	342.7	533.4	0.00	0.00	
6,000.0	8.31	140.04	5,960.9	-420.0	352.0	547.8	0.00	0.00	
6,100.0	8.31	140.04	6,059.9	-431.1	361.3	562.3	0.00	0.00	
6,200.0	8.31	140.04	6,158.8	-442.2	370.6	576.7	0.00	0.00	
6,300.0	8.31	140.04	6,257.8	-453.2	379.8	591.2	0.00	0.00	
6,400.0	8.31	140.04	6,356.7	-464.3	389.1	605.6	0.00	0.00	
6,500.0	8.31	140.04	6,455.7	-475.4	398.4	620.0	0.00	0.00	
6,600.0	8.31	140.04	6,554.6	-486.5	407.7	634.5	0.00	0.00	
6,700.0	8.31	140.04	6,653.6	-497.5	417.0	648.9	0.00	0.00	
6,800.0	8.31	140.04	6,752.5	-508.6	426.2	663.4	0.00	0.00	
6,900.0	8.31	140.04	6,851.5	-519.7	435.5	677.8	0.00	0.00	
7,000.0	8.31	140.04	6,950.4	-530.8	444.8	692.3	0.00	0.00	
7,100.0	8.31	140.04	7,049.4	-541.8	454.1	706.7	0.00	0.00	
7,162.3	8.31	140.04	7,111.1	-548.7	459.9	715.7	0.00	0.00	Start 2° Drop
7,200.0	7.55	140.04	7,148.4	-552.7	463.2	720.9	2.00	-2.00	
7,300.0	5.55	140.04	7,247.7	-561.5	470.5	732.3	2.00	-2.00	
7,400.0	3.55	140.04	7,347.4	-567.6	475.6	740.3	2.00	-2.00	
7,500.0	1.55	140.04	7,447.3	-571.0	478.5	744.7	2.00	-2.00	
7,537.7	0.80	140.04	7,485.0	-571.6	479.0	745.5	2.00	-2.00	WILLIAMS_FORK (TVD)
7,577.7	0.00	0.00	7,525.0	-571.8	479.2	745.8	2.00	-2.00	EOD @ Inc. = 0° - TOG (TVD)
7,600.0	0.00	239.57	7,547.3	-571.8	479.2	745.8	0.02	0.02	
7,700.0	0.02	239.57	7,647.3	-571.8	479.2	745.8	0.02	0.02	
7,800.0	0.03	239.57	7,747.3	-571.8	479.1	745.8	0.02	0.02	
7,900.0	0.05	239.57	7,847.3	-571.8	479.1	745.7	0.02	0.02	
8,000.0	0.07	239.57	7,947.3	-571.9	479.0	745.7	0.02	0.02	
8,100.0	0.08	239.57	8,047.3	-572.0	478.9	745.7	0.02	0.02	
8,200.0	0.10	239.57	8,147.3	-572.0	478.7	745.7	0.02	0.02	
8,300.0	0.11	239.57	8,247.3	-572.1	478.6	745.7	0.02	0.02	
8,400.0	0.13	239.57	8,347.3	-572.2	478.4	745.6	0.02	0.02	
8,500.0	0.14	239.57	8,447.3	-572.4	478.2	745.6	0.02	0.02	
8,600.0	0.16	239.57	8,547.3	-572.5	478.0	745.6	0.02	0.02	
8,700.0	0.17	239.57	8,647.3	-572.6	477.7	745.5	0.02	0.02	
8,786.7	0.19	239.57	8,734.0	-572.8	477.5	745.5	0.02	0.02	PRICE_Marker (TVD)
8,800.0	0.19	239.57	8,747.3	-572.8	477.4	745.5	0.02	0.02	
8,900.0	0.21	239.57	8,847.3	-573.0	477.1	745.4	0.02	0.02	
9,000.0	0.22	239.57	8,947.3	-573.2	476.8	745.4	0.02	0.02	
9,100.0	0.24	239.57	9,047.3	-573.4	476.5	745.3	0.02	0.02	
9,200.0	0.25	239.57	9,147.3	-573.6	476.1	745.3	0.02	0.02	
9,300.0	0.27	239.57	9,247.3	-573.8	475.7	745.2	0.02	0.02	
9,400.0	0.28	239.57	9,347.3	-574.1	475.3	745.1	0.02	0.02	

# Cathedral Energy Services

## Planning Report

<b>Database:</b>	USA EDM 5000 Multi Users DB	<b>Local Co-ordinate Reference:</b>	Well 8503A-34 M27 496 was 8503A-28
<b>Company:</b>	EnCana Oil & Gas (USA) Inc	<b>TVD Reference:</b>	KBE @ 8121.0ft (Original Well Elev)
<b>Project:</b>	Story Gulch	<b>MD Reference:</b>	KBE @ 8121.0ft (Original Well Elev)
<b>Site:</b>	S27-T4S-R96W (M27 496)	<b>North Reference:</b>	True
<b>Well:</b>	8503A-34 M27 496 was 8503A-28	<b>Survey Calculation Method:</b>	Minimum Curvature
<b>Wellbore:</b>	DD		
<b>Design:</b>	Plan #2		

Planned Survey									
Measured Depth (ft)	Inclination (°)	Azimuth (°)	Vertical Depth (ft)	+N/-S (ft)	+E/-W (ft)	Vertical Section (ft)	Dogleg Rate (°/100ft)	Build Rate (°/100ft)	Comments / Formations
9,500.0	0.30	239.57	9,447.3	-574.3	474.9	745.1	0.02	0.02	
9,600.0	0.31	239.57	9,547.3	-574.6	474.4	745.0	0.02	0.02	
9,700.0	0.33	239.57	9,647.3	-574.9	473.9	744.9	0.02	0.02	
9,800.0	0.35	239.57	9,747.3	-575.2	473.4	744.8	0.02	0.02	
9,900.0	0.36	239.57	9,847.3	-575.5	472.9	744.7	0.02	0.02	
10,000.0	0.38	239.57	9,947.3	-575.8	472.3	744.7	0.02	0.02	
10,100.0	0.39	239.57	10,047.3	-576.1	471.7	744.6	0.02	0.02	
10,200.0	0.41	239.57	10,147.3	-576.5	471.1	744.5	0.02	0.02	
10,300.0	0.42	239.57	10,247.3	-576.9	470.5	744.4	0.02	0.02	
10,400.0	0.44	239.57	10,347.2	-577.3	469.9	744.3	0.02	0.02	
10,500.0	0.45	239.57	10,447.2	-577.6	469.2	744.1	0.02	0.02	
10,600.0	0.47	239.57	10,547.2	-578.1	468.5	744.0	0.02	0.02	
10,641.8	0.48	239.57	10,589.0	-578.2	468.2	744.0	0.01	0.01	CAMEO (TVD)
10,700.0	0.49	239.57	10,647.2	-578.5	467.8	743.9	0.02	0.02	
10,800.0	0.50	239.57	10,747.2	-578.9	467.0	743.8	0.02	0.02	
10,900.0	0.52	239.57	10,847.2	-579.4	466.3	743.7	0.02	0.02	
11,000.0	0.53	239.57	10,947.2	-579.8	465.5	743.5	0.02	0.02	
11,100.0	0.55	239.57	11,047.2	-580.3	464.7	743.4	0.02	0.02	
11,200.0	0.56	239.57	11,147.2	-580.8	463.8	743.3	0.02	0.02	
11,241.8	0.57	239.57	11,189.0	-581.0	463.5	743.2	0.01	0.01	ROLLINS (TVD)
11,300.0	0.58	239.57	11,247.2	-581.3	463.0	743.1	0.02	0.02	
11,391.8	0.59	239.57	11,339.0	-581.8	462.2	743.0	0.02	0.02	Drillers TD @ 11,391.8' MD
11,400.0	0.59	239.57	11,347.2	-581.8	462.1	743.0	0.00	0.00	
11,453.8	0.59	239.57	11,401.0	-582.1	461.6	742.9	0.00	0.00	COZZETTE (TVD)
11,500.0	0.59	239.57	11,447.2	-582.3	461.2	742.8	0.00	0.00	
11,600.0	0.59	239.57	11,547.2	-582.9	460.3	742.7	0.00	0.00	
11,653.8	0.59	239.57	11,601.0	-583.1	459.8	742.6	0.00	0.00	CORCORAN (TVD)
11,700.0	0.59	239.57	11,647.2	-583.4	459.4	742.6	0.00	0.00	
11,800.0	0.59	239.57	11,747.2	-583.9	458.5	742.4	0.00	0.00	
11,869.8	0.59	239.57	11,817.0	-584.3	457.9	742.3	0.00	0.00	UPPER_SEGO (TVD)
11,900.0	0.59	239.57	11,847.2	-584.4	457.6	742.3	0.00	0.00	
12,000.0	0.59	239.57	11,947.2	-585.0	456.7	742.1	0.00	0.00	
12,100.0	0.59	239.57	12,047.2	-585.5	455.8	742.0	0.00	0.00	
12,119.8	0.59	239.57	12,067.0	-585.6	455.7	742.0	0.00	0.00	SEGO_BASE_TARGET (TVD)
12,200.0	0.59	239.57	12,147.2	-586.0	454.9	741.8	0.00	0.00	
12,300.0	0.59	239.57	12,247.2	-586.5	454.1	741.7	0.00	0.00	
12,391.8	0.59	239.57	12,339.0	-587.0	453.2	741.6	0.00	0.00	Permit TD @ 12,391.8' MD

Targets									
Target Name									
- hit/miss target	Dip Angle (°)	Dip Dir. (°)	TVD (ft)	+N/-S (ft)	+E/-W (ft)	Northing (ft)	Easting (ft)	Latitude	Longitude
- Shape									
M27 496 8503A-28 PBH	0.00	0.00	11,339.0	-581.8	462.2	1,678,395.18	2,251,452.47	39° 39' 57.26 N	108° 9' 33.67 W
- plan hits target center									
- Rectangle (sides W30.0 H50.0 D0.0)									
M27 496 8503A-28 TGT	0.00	0.00	7,525.0	-571.8	479.2	1,678,404.67	2,251,469.77	39° 39' 57.36 N	108° 9' 33.45 W
- plan hits target center									
- Point									



# Cathedral Energy Services

## Planning Report

<b>Database:</b>	USA EDM 5000 Multi Users DB	<b>Local Co-ordinate Reference:</b>	Well 8503A-34 M27 496 was 8503A-28
<b>Company:</b>	EnCana Oil & Gas (USA) Inc	<b>TVD Reference:</b>	KBE @ 8121.0ft (Original Well Elev)
<b>Project:</b>	Story Gulch	<b>MD Reference:</b>	KBE @ 8121.0ft (Original Well Elev)
<b>Site:</b>	S27-T4S-R96W (M27 496)	<b>North Reference:</b>	True
<b>Well:</b>	8503A-34 M27 496 was 8503A-28	<b>Survey Calculation Method:</b>	Minimum Curvature
<b>Wellbore:</b>	DD		
<b>Design:</b>	Plan #2		

### Formations

Measured Depth (ft)	Vertical Depth (ft)	Name	Lithology	Dip (°)	Dip Direction (°)
1,034.0	1,034.0	A_GROOVE (TVD)			
1,188.0	1,188.0	B_GROOVE (TVD)			
2,147.1	2,147.0	Garden Gulch Member (TVD)			
5,364.4	5,332.0	WASATCH_G (TVD)			
7,537.7	7,485.0	WILLIAMS_FORK (TVD)			
7,577.7	7,525.0	TOG (TVD)			
8,786.7	8,734.0	PRICE_Marker (TVD)			
10,641.8	10,589.0	CAMEO (TVD)			
11,241.8	11,189.0	ROLLINS (TVD)			
11,453.8	11,401.0	COZZETTE (TVD)			
11,653.8	11,601.0	CORCORAN (TVD)			
11,869.8	11,817.0	UPPER_SEGO (TVD)			
12,119.8	12,067.0	SEGO_BASE_TARGET (TVD)			

### Plan Annotations

Measured Depth (ft)	Vertical Depth (ft)	Local Coordinates		Comment
		+N/-S (ft)	+E/-W (ft)	
2,000.0	2,000.0	0.0	0.0	KOP @ 2,000'
2,415.4	2,413.9	-23.0	19.3	EOB @ Inc. = 8.31°
7,162.3	7,111.1	-548.7	459.9	Start 2° Drop
7,577.7	7,525.0	-571.8	479.2	EOD @ Inc. = 0°
11,391.8	11,339.0	-581.8	462.2	Drillers TD @ 11,391.8' MD
12,391.8	12,339.0	-587.0	453.2	Permit TD @ 12,391.8' MD