

*T4S, R96W, 6th P.M.*

Encana OIL & GAS (USA) INC.

Well location, SG 8502B-34 M27 496 (SURFACE LOCATION), located as shown in the SW 1/4 SW 1/4 of Section 27, T4S, R96W, 6th P.M., Garfield County, Colorado.

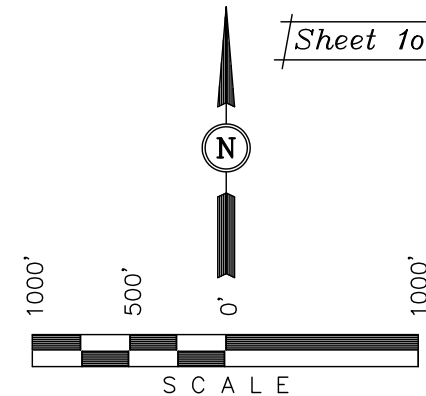
### BASIS OF ELEVATION

BENCH MARK (H79) LOCATED IN THE NE 1/4 OF SECTION 35, T4S, R98W, 6th P.M. TAKEN FROM THE BULL FORK QUADRANGLE, COLORADO, 7.5 MINUTE SERIES (TOPO GRAPHICAL MAP) PUBLISHED BY THE UNITED STATES DEPARTMENT OF THE INTERIOR, GEOLOGICAL SURVEY. SAID ELEVATION IS MARKED AS BEING 8535 FEET.

### BASIS OF BEARINGS

BASIS OF BEARINGS IS A G.P.S. OBSERVATION.

*Sheet 10 of 11*



### CERTIFICATE

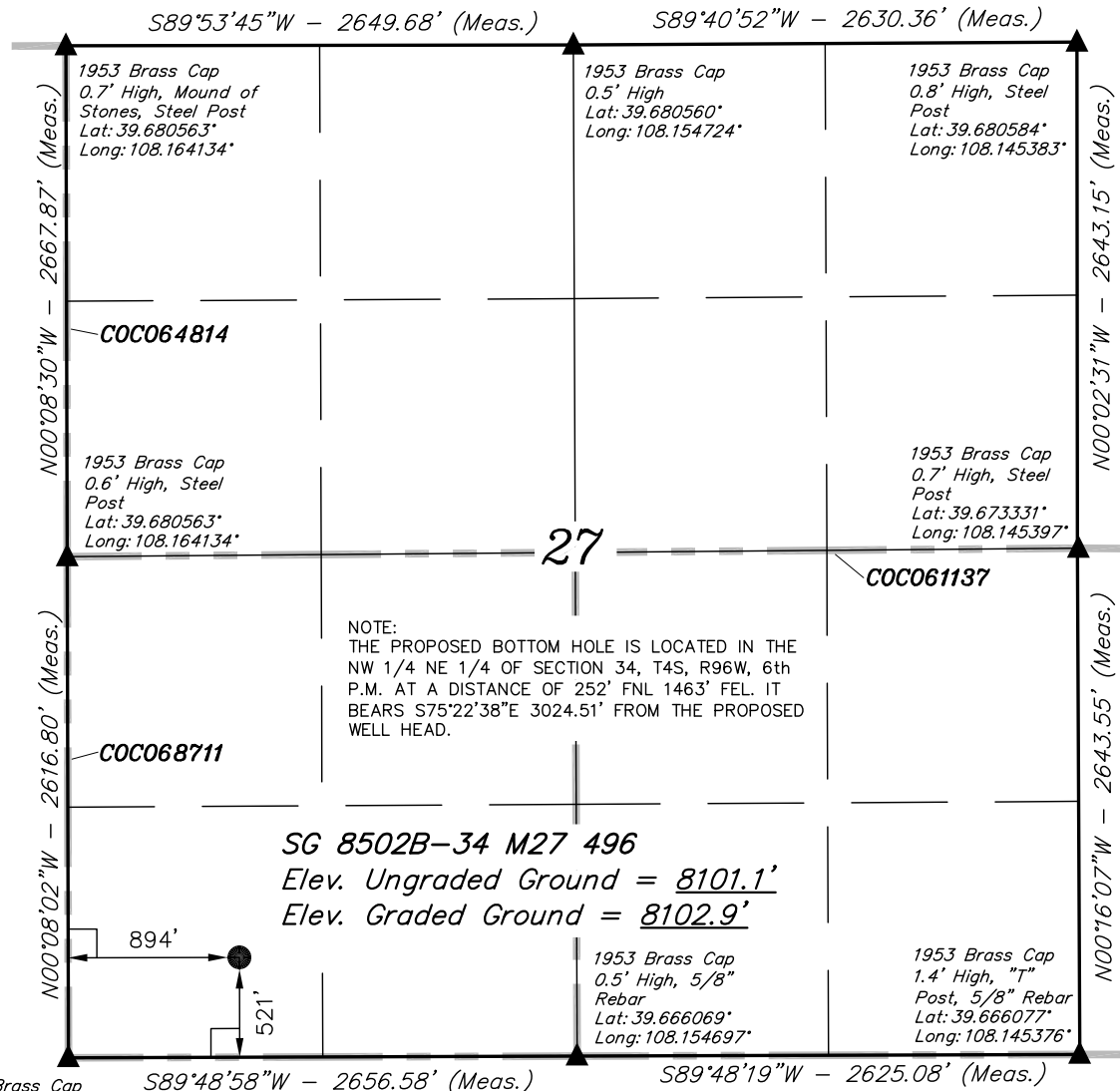
THIS IS TO CERTIFY THAT THE ABOVE PLAT WAS PREPARED AND LOCATION AS SHOWN WAS STAKED ON THE GROUND FROM FIELD NOTES OF ACTUAL SURVEYS MADE BY ME OR UNDER MY SUPERVISION AND THAT THE SAME ARE TRUE AND CORRECT TO THE BEST OF MY KNOWLEDGE AND BELIEF.

REGISTERED LAND SURVEYOR  
REGISTRATION NO. 17492  
STATE OF COLORADO  
12-22-11

Revised: 01-03-12 D.R.B.  
Revised: 12-22-11 D.R.B.

**UINTAH ENGINEERING & LAND SURVEYING**  
**85 SOUTH 200 EAST - VERNAL, UTAH 84078**  
(435) 789-1017

SCALE 1" = 1000'	DATE SURVEYED: 08-03-10	DATE DRAWN: 10-26-11
PARTY C.R. K.A. D.R.B.	REFERENCES G.L.O. PLAT	
WEATHER COOL	FILE Encana OIL & GAS (USA) INC.	



### LEGEND:

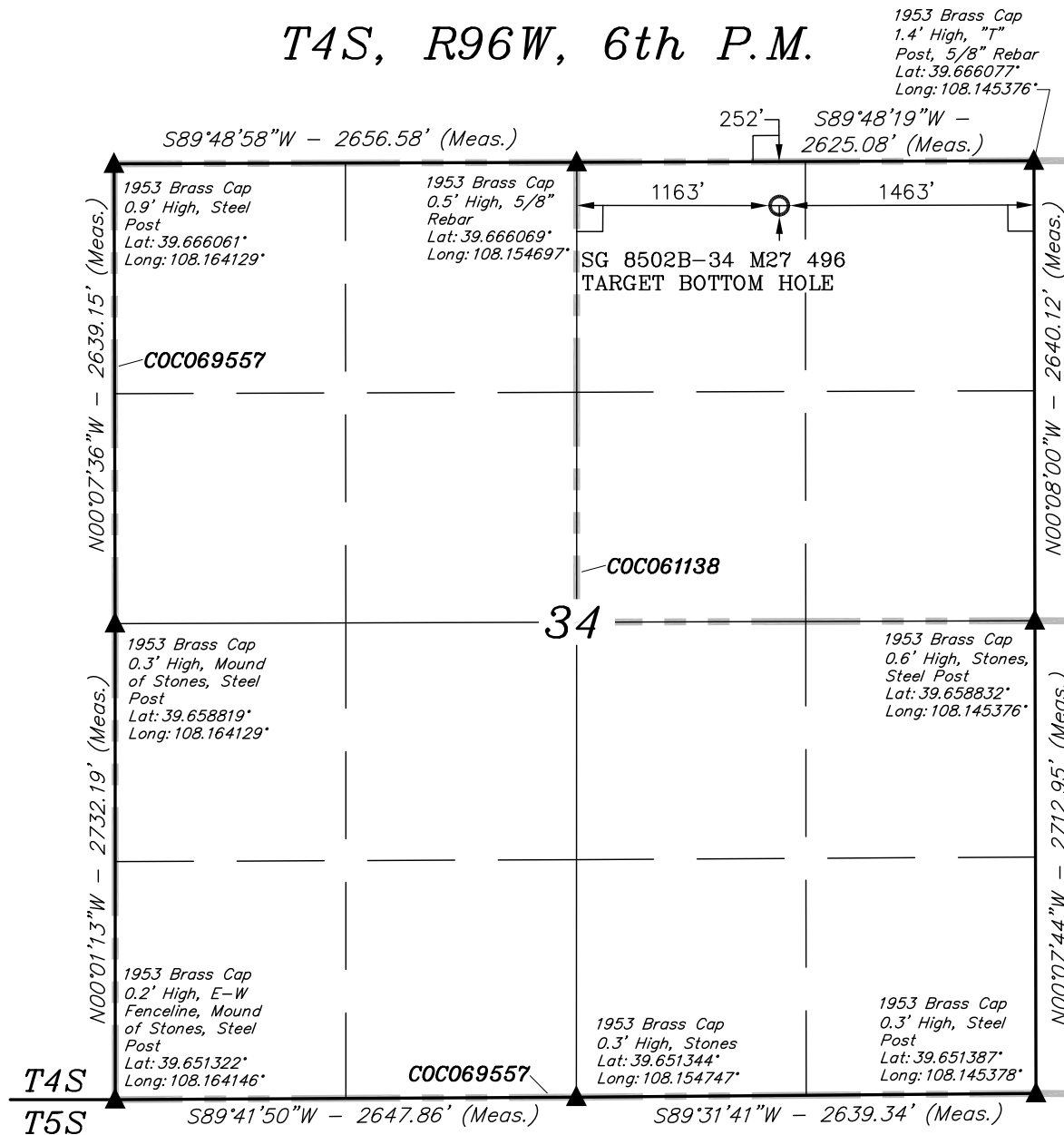
- = 90° SYMBOL
- = PROPOSED WELL HEAD.
- = SECTION CORNERS LOCATED.

NOTE:  
SEE SHEET 7A FOR EXISTING  
IMPROVEMENTS WITHIN 200' OF THE  
PROPOSED WELL DISTURBANCE.

PDOP = 2.0

<b>NAD 83 (SURFACE LOCATION)</b>
LATITUDE = 39°40'02.98" (39.667494)
LONGITUDE = 108°09'39.44" (108.160956)
<b>NAD 27 (SURFACE LOCATION)</b>
LATITUDE = 39°40'03.07" (39.667519)
LONGITUDE = 108°09'37.14" (108.160317)

T4S, R96W, 6th P.M.



NOTE:  
THE PROPOSED WELL HEAD IS LOCATED IN THE  
SW 1/4 SW 1/4 OF SECTION 27, T4S, R96W, 6th  
P.M. AT A DISTANCE OF 521' FSL 894' FWL. IT  
BEARS N75°22'38"W 3024.51' FROM THE PROPOSED  
BOTTOM HOLE.

**LEGEND:**

- └─┘ = 90° SYMBOL
- = PROPOSED WELL HEAD.
- ▲ = SECTION CORNERS LOCATED.

NAD 83 (TARGET BOTTOM HOLE)	
LATITUDE	= 39°39'55.37" (39.665381)
LONGITUDE	= 108°09'02.05" (108.150569)
NAD 27 (TARGET BOTTOM HOLE)	
LATITUDE	= 39°39'55.46" (39.665406)
LONGITUDE	= 108°08'59.76" (108.149933)

**Encana OIL & GAS (USA) INC.**

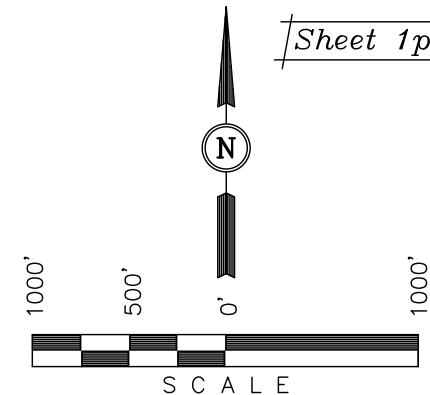
Well location, SG 8502B-34 M27 496 (TARGET  
BOTTOM HOLE), located as shown in the NW 1/4  
NE 1/4 of Section 34, T4S, R96W, 6th P.M.,  
Garfield County, Colorado.

**BASIS OF ELEVATION**

BENCH MARK (H79) LOCATED IN THE NE 1/4 OF SECTION  
35, T4S, R98W, 6th P.M. TAKEN FROM THE BULL FORK  
QUADRANGLE, COLORADO, 7.5 MINUTE SERIES (TOPO  
GRAPHICAL MAP) PUBLISHED BY THE UNITED STATES  
DEPARTMENT OF THE INTERIOR, GEOLOGICAL SURVEY.  
SAID ELEVATION IS MARKED AS BEING 8535 FEET.

**BASIS OF BEARINGS**

BASIS OF BEARINGS IS A G.P.S. OBSERVATION.



**CERTIFICATE**

THIS IS TO CERTIFY THAT THE ABOVE PLAT WAS PREPARED AND  
LOCATION AS SHOWN WAS STAKED ON THE GROUND FROM FIELD  
NOTES OF ACTUAL SURVEYS MADE BY ME OR UNDER MY  
SUPERVISION AND THAT THE SAME ARE TRUE AND CORRECT TO  
THE BEST OF MY KNOWLEDGE AND BELIEF.

REGISTERED LAND SURVEYOR  
REGISTRATION NO. 17492  
STATE OF COLORADO

Revised: 01-03-12 D.R.B.  
Revised: 12-22-11 D.R.B.

**UINTAH ENGINEERING & LAND SURVEYING**  
**85 SOUTH 200 EAST - VERNAL, UTAH 84078**  
**(435) 789-1017**

SCALE 1" = 1000'	DATE SURVEYED: 08-03-10	DATE DRAWN: 10-26-11
PARTY C.R. B.H. D.R.B.	REFERENCES G.L.O. PLAT	
WEATHER COOL	FILE Encana OIL & GAS (USA) INC.	