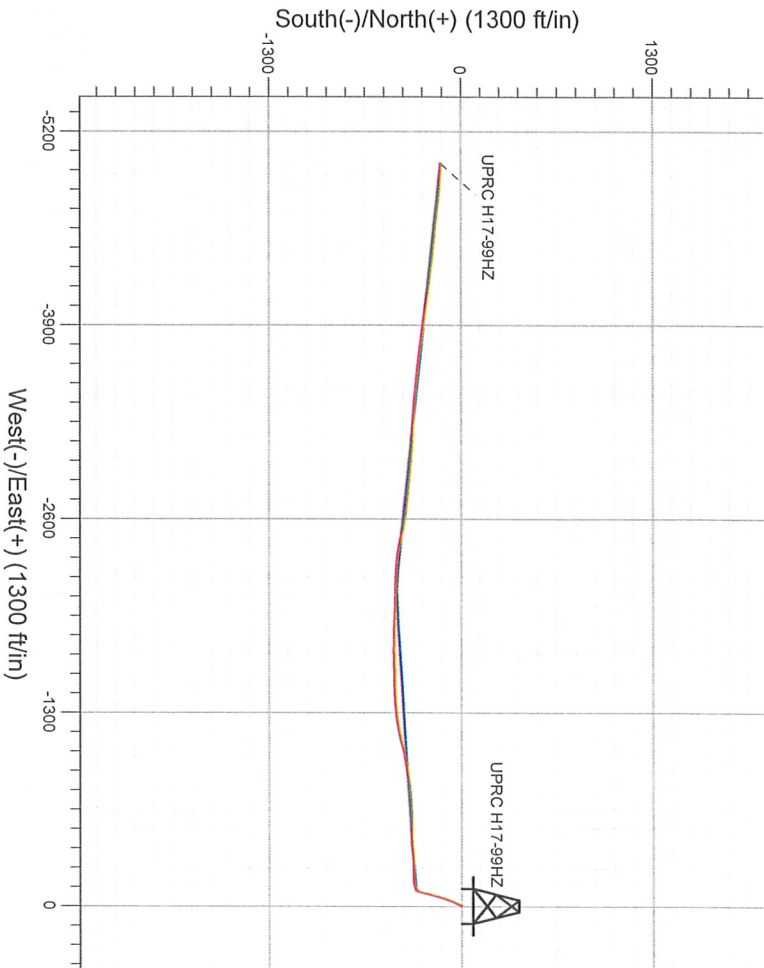
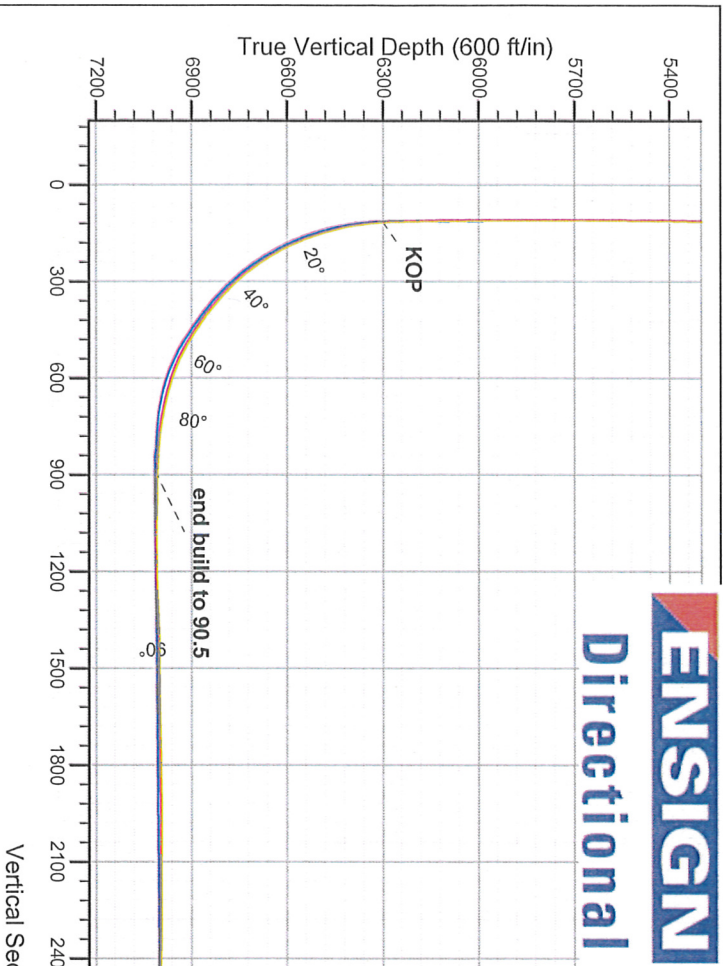


NOBLE ENERGY INC WELL LOG UNIT 1 CU

Well Name: **UPRC H17-99HZ**
 Surface Location: MEGAN H16-99HZ PAD 16-T3N-65W
 North American Datum 1983 , US State Plane 1983 , Colorado Northern Zone
 Ground Elevation: 4856.0
 +N/-S +E/-W Northing Easting Latitude Longitude Slot
 0.0 0.0 1324586.66 3229758.24 40.221462 -104.677201
 ENSIGN 134 RKB 13' RKB @ 4869.0ft (ENSIGN 134 RKB 13')

FINAL SURVEY

Projected Bottom Hole Location
 11614'MD 6986'TVD 137'S & 4979'W of SHL
 95.0 degree Incl @ 274.8 degree AZM



MEGAN H16-99HZ PAD 16-T3N-65W
 UPRC H17-99HZ
 Wellbore #1
 15:23, December 20 2011

ANNOTATIONS

No annotation data is available.

LEGEND

▲ UPRC H17-99HZ, Wellbore #1, PLAN 6 (APRIL 19,2011) TIED TO SURVEY V0

Vertical Section at 268.42° (600 ft/in)



20 December, 2011

Standard Survey Report

Design: Wellbore #1

Wellbore #1

SEC.16-T3N-R65W
MEGAN H16-99HZ PAD 16-T3N-65W
UPRC H17-99HZ

**NOBLE ENERGY INC WELD
COUNTY CO**

Directional



Measured Depth (ft)	Inclination (°)	Azimuth (°)	Vertical Depth (ft)	+N/-S (ft)	+E/-W (ft)	Vertical Section (ft)	Dogleg Rate (%/100ft)	Build Rate (%/100ft)	Turn Rate (%/100ft)
1,846.0	7.00	199.80	1,841.3	-73.6	-33.8	35.8	0.27	0.00	2.21
1,751.0	7.00	197.70	1,747.0	-62.6	-30.1	31.8	1.05	-0.52	-7.19
1,655.0	7.50	204.60	1,651.8	-51.3	-25.7	27.1	0.12	0.00	-0.95
1,560.0	7.50	205.50	1,557.6	-40.1	-20.5	21.6	0.46	0.32	2.63
1,465.0	7.20	203.00	1,463.4	-29.0	-15.5	16.3	0.73	0.73	-0.42
1,369.0	6.50	203.40	1,368.0	-18.5	-11.0	11.5	1.51	1.47	-3.47
1,274.0	5.10	206.70	1,273.5	-9.8	-6.9	7.2	1.08	1.05	-2.74
1,179.0	4.10	209.30	1,178.8	-3.0	-3.4	3.5	2.13	2.13	-2.77
1,085.0	2.10	211.90	1,085.0	1.3	-0.8	0.8	2.46	1.88	-156.67
989.0	0.30	2.30	989.0	2.6	0.1	-0.2	0.03	0.03	0.00
0.0	0.00	0.00	0.0	0.0	0.0	0.0	0.00	0.00	0.00

Survey Program	Date	To (ft)	From (ft)	Tool Name	Description
HARPLINE TD 460'FWL - HARPLINE SH 460'FEL	12/20/2011	11,614.0	989.0	MWD	MWD - Standard

Well	Well Position	Position Uncertainty	Well Position	Position Uncertainty
UPRC H17-99HZ	Wellbore #1	0.0 ft	0.0 ft	0.0 ft

Well	Well Position	Position Uncertainty	Well Position	Position Uncertainty
MEGAN H16-99HZ PAD 16-T3N-65W	Wellbore #1	0.0 ft	0.0 ft	0.0 ft

Map System	Geo Datum	Map Zone
US State Plane 1983	North American Datum 1983	Colorado Northern Zone

Company: NOBLE ENERGY INC WELD COUNTY CO
Project: SEC.16-T3N-R65W
Site: MEGAN H16-99HZ PAD 16-T3N-65W
Well: UPRC H17-99HZ
Wellbore: Wellbore #1
Design: Wellbore #1
Database: Landmark
Survey Calculation Method: Minimum Curvature
North Reference: True
MD Reference: RKB @ 4869.0ft (ENSGN 134 RKB 13)
TVD Reference: RKB @ 4869.0ft (ENSGN 134 RKB 13)
Local Co-ordinate Reference: Well UPRC H17-99HZ
System Datum: Mean Sea Level
Using Well Reference Point: Using geodetic scale factor



Measured (ft)	Inclination (°)	Azimuth (°)	Vertical Depth (ft)	+N/-S (ft)	+E/-W (ft)	Vertical Section (ft)	Dogleg Rate (%/100ft)	Build Rate (%/100ft)	Turn Rate (%/100ft)
1,941.0	6.40	202.90	1,935.6	-83.9	-37.8	40.2	0.74	-0.63	3.26
2,036.0	5.80	201.80	2,030.1	-93.2	-41.7	44.3	0.64	-0.63	-1.16
2,131.0	6.10	198.60	2,124.6	-102.5	-47.9	47.2	0.47	0.32	-3.37
2,228.0	6.90	193.70	2,221.0	-113.0	-48.1	51.2	1.00	0.82	-5.05
2,324.0	6.40	198.30	2,316.3	-123.7	-51.2	54.6	0.76	-0.52	4.79
2,419.0	7.50	197.30	2,410.6	-134.6	-54.7	58.4	1.16	-1.16	-1.05
2,514.0	7.70	195.80	2,504.8	-146.7	-58.2	62.3	0.30	0.21	-1.58
2,609.0	7.90	194.40	2,598.9	-159.1	-61.6	66.0	0.29	0.21	-1.47
2,704.0	8.40	194.30	2,692.9	-172.2	-64.9	69.7	0.53	0.53	-0.11
2,799.0	9.20	196.50	2,786.8	-186.2	-68.8	73.9	0.91	0.84	2.32
2,894.0	9.20	195.90	2,880.6	-200.8	-73.0	78.6	0.10	0.00	-0.63
2,989.0	9.10	196.60	2,974.4	-215.3	-77.3	83.2	0.16	-0.11	0.74
3,085.0	8.10	193.10	3,069.3	-229.1	-81.0	87.3	1.18	-1.04	-3.65
3,180.0	8.00	192.10	3,163.4	-242.1	-83.9	90.5	0.18	-0.11	-1.05
3,275.0	6.50	187.70	3,257.6	-253.9	-86.0	93.0	1.68	-1.58	-4.63
3,370.0	6.40	193.00	3,352.0	-264.4	-87.9	95.2	0.64	-0.11	5.58
3,465.0	6.20	200.00	3,446.4	-274.4	-90.8	98.4	0.83	-0.21	7.37
3,561.0	5.80	198.30	3,541.9	-283.8	-94.1	101.9	0.46	-0.42	-1.77
3,656.0	4.70	199.40	3,636.5	-292.1	-96.9	105.0	1.16	-1.16	1.16
3,751.0	3.10	212.80	3,731.3	-297.9	-99.6	107.8	1.93	-1.68	14.11
3,846.0	0.80	229.80	3,826.2	-300.5	-101.5	109.8	2.47	-2.42	17.89
3,941.0	0.70	212.20	3,921.4	-301.4	-102.3	110.6	0.26	-0.11	-18.21
4,036.0	0.80	221.20	4,016.2	-302.4	-103.1	111.4	0.16	0.11	9.16
4,131.0	1.10	221.50	4,111.2	-303.6	-104.1	112.5	0.32	0.32	0.32
4,226.0	1.30	223.70	4,206.2	-305.0	-105.5	113.9	0.22	0.21	2.32
4,321.0	1.60	224.20	4,301.2	-306.8	-107.1	115.6	0.32	0.32	0.53
4,416.0	1.50	227.90	4,396.1	-308.6	-109.0	117.5	0.15	-0.11	3.89
4,510.0	0.50	280.00	4,490.1	-309.3	-110.3	118.8	1.34	-1.06	55.43
4,606.0	0.60	284.40	4,586.1	-309.1	-111.2	119.7	0.11	0.10	4.58
4,700.0	0.90	296.40	4,680.1	-308.7	-112.3	120.8	0.36	0.32	12.77
4,795.0	0.90	7.60	4,775.1	-307.6	-112.9	121.4	1.10	0.00	74.95
4,890.0	1.50	40.90	4,870.1	-305.9	-112.0	120.4	0.94	0.63	35.05
4,985.0	2.10	18.00	4,965.0	-303.3	-110.6	119.0	0.97	0.63	-24.11
5,080.0	2.20	42.60	5,060.0	-300.3	-108.9	117.1	0.97	0.11	25.89
5,174.0	1.20	59.30	5,153.9	-298.5	-106.8	115.0	1.18	-1.06	17.77
5,269.0	0.80	58.60	5,248.9	-297.6	-105.4	113.6	0.42	-0.42	-0.74
5,364.0	0.50	65.30	5,343.9	-297.1	-104.4	112.6	0.33	-0.32	7.05
5,459.0	0.50	65.20	5,438.9	-296.8	-103.7	111.9	0.00	0.00	-0.11
5,554.0	0.60	69.00	5,533.9	-296.4	-102.8	111.0	0.11	0.11	4.00
5,649.0	0.40	71.10	5,628.9	-296.1	-102.1	110.2	0.21	-0.21	2.21
5,743.0	0.40	145.80	5,722.9	-296.3	-101.6	109.7	0.52	0.00	79.47
5,838.0	0.70	212.40	5,817.9	-297.1	-101.7	109.9	0.69	0.32	70.11
5,933.0	0.80	212.70	5,912.9	-298.1	-102.4	110.6	0.11	0.11	0.32
6,028.0	0.80	218.00	6,007.9	-299.2	-103.1	111.4	0.08	0.00	5.58
6,123.0	1.00	202.50	6,102.8	-300.5	-103.9	112.1	0.33	0.21	-16.32
6,218.0	1.30	211.00	6,197.8	-302.2	-104.7	113.0	0.36	0.32	8.95
6,238.0	1.60	220.10	6,217.8	-302.6	-105.0	113.4	1.89	1.50	45.50
6,270.0	1.80	220.50	6,249.8	-303.3	-105.6	114.0	0.63	0.63	1.25
6,302.0	3.30	236.20	6,281.8	-304.2	-106.7	115.1	5.13	4.69	49.06
6,333.0	5.10	249.00	6,312.7	-305.2	-108.8	117.2	6.51	5.81	41.29
6,365.0	7.30	247.30	6,344.5	-306.5	-112.0	120.4	6.90	6.88	-5.31
6,397.0	9.10	245.10	6,376.2	-308.3	-116.1	124.6	5.71	5.63	-6.88
6,429.0	11.10	247.30	6,407.7	-310.6	-121.3	129.8	6.36	6.25	6.88
6,460.0	13.40	253.10	6,438.0	-312.8	-127.5	136.1	8.41	7.42	18.71

Local Co-ordinate Reference: Well UPRC H17-99HZ
 TDV Reference: RKB @ 4869.0ft (ENSGN 134 RKB 13)
 MD Reference: RKB @ 4869.0ft (ENSGN 134 RKB 13)
 North Reference: True
 Survey Calculation Method: Minimum Curvature
 Database: Landmark

Company: NOBLE ENERGY INC WELD COUNTY CO
 Project: SEC.16-T3N-R65W
 Site: MEGAN H16-99HZ PAD 16-T3N-65W
 Well: UPRC H17-99HZ
 Wellbore: Wellbore #1
 Design: Wellbore #1



Measured	Depth	Inclination	Azimuth	Vertical	Depth	+N/-S	+E/-W	Vertical	Dogleg	Build	Turn
(ft)	(°)	(°)	(°)	(ft)	(ft)	(ft)	(ft)	(ft)	(%/100ft)	(%/100ft)	(%/100ft)
6,492.0	16.20	255.40	6,468.9	-315.0	-315.0	-144.2	144.0	144.0	8.94	8.75	7.19
6,523.0	18.00	258.40	6,498.5	-317.0	-317.0	-142.9	152.9	152.9	6.46	5.81	9.68
6,550.0	19.60	261.30	6,528.8	-318.8	-318.8	-154.4	163.1	163.1	5.79	5.00	9.06
6,587.0	21.90	265.00	6,558.7	-320.2	-320.2	-165.6	174.4	174.4	8.27	7.19	11.56
6,618.0	24.60	267.80	6,587.2	-320.9	-320.9	-177.8	186.6	186.6	9.41	8.71	9.03
6,650.0	28.00	269.10	6,615.9	-321.3	-321.3	-192.0	200.8	200.8	10.78	10.63	4.06
6,681.0	31.20	269.90	6,642.9	-321.4	-321.4	-207.3	216.1	216.1	10.40	10.32	2.58
6,713.0	33.40	268.90	6,669.9	-321.6	-321.6	-224.4	233.2	233.2	7.07	6.88	-3.13
6,745.0	34.60	269.90	6,696.4	-321.8	-321.8	-242.3	251.1	251.1	4.14	3.75	3.13
6,776.0	37.40	269.90	6,721.5	-321.8	-321.8	-260.5	269.3	269.3	9.03	9.00	0.00
6,808.0	40.10	268.20	6,746.5	-322.2	-322.2	-280.5	289.3	289.3	9.07	8.44	-5.31
6,839.0	42.60	266.50	6,769.7	-323.1	-323.1	-301.0	309.8	309.8	8.84	8.06	-5.48
6,871.0	46.10	265.80	6,792.6	-324.6	-324.6	-323.3	332.2	332.2	11.04	10.94	-2.19
6,902.0	48.50	263.80	6,813.6	-326.7	-326.7	-346.0	354.9	354.9	9.08	7.74	-6.45
6,934.0	50.50	262.90	6,834.4	-329.5	-329.5	-370.2	379.1	379.1	6.61	6.25	-2.81
6,966.0	53.10	264.00	6,854.2	-332.4	-332.4	-395.1	404.2	404.2	8.56	8.13	3.44
6,997.0	54.90	265.90	6,872.4	-334.6	-334.6	-420.1	429.2	429.2	7.64	5.81	6.13
7,029.0	56.90	268.10	6,890.4	-336.0	-336.0	-446.6	455.7	455.7	8.45	6.25	6.88
7,061.0	58.20	269.50	6,907.5	-336.5	-336.5	-473.6	482.7	482.7	5.49	4.06	4.38
7,092.0	61.20	272.00	6,923.2	-336.2	-336.2	-500.3	509.4	509.4	11.92	9.68	8.06
7,124.0	64.70	271.30	6,937.7	-335.4	-335.4	-528.8	537.9	537.9	11.11	10.94	-2.19
7,155.0	68.70	269.80	6,950.0	-335.1	-335.1	-557.3	566.3	566.3	13.65	12.90	-4.84
7,187.0	70.90	268.40	6,961.0	-335.6	-335.6	-587.3	596.4	596.4	8.01	6.88	-4.38
7,219.0	73.40	267.20	6,970.9	-336.7	-336.7	-617.7	626.8	626.8	8.59	7.81	-3.75
7,250.0	75.70	266.60	6,979.1	-338.4	-338.4	-647.6	656.7	656.7	7.65	7.42	-1.94
7,282.0	77.80	266.70	6,986.4	-340.2	-340.2	-678.7	687.8	687.8	6.57	6.56	0.31
7,313.0	79.20	266.80	6,992.6	-341.9	-341.9	-709.0	718.2	718.2	4.53	4.32	-0.32
7,354.0	82.30	265.20	6,999.2	-344.7	-344.7	-749.3	758.6	758.6	8.49	7.56	-3.90
7,417.0	85.40	263.34	7,006.0	-351.0	-351.0	-811.7	821.1	821.1	5.73	4.92	-2.95
7,449.0	86.40	262.40	7,008.3	-354.9	-354.9	-843.3	852.8	852.8	4.28	3.13	-2.94
7,480.0	87.70	263.50	7,009.8	-358.7	-358.7	-874.1	883.6	883.6	5.49	4.19	3.55
7,512.0	89.00	262.80	7,010.8	-362.5	-362.5	-905.8	915.5	915.5	4.61	4.06	-2.19
7,544.0	89.90	260.20	7,011.1	-367.3	-367.3	-937.5	947.3	947.3	8.60	2.81	-8.13
7,591.0	89.20	257.60	7,011.4	-376.3	-376.3	-983.6	993.6	993.6	5.73	-1.49	-5.53
7,639.0	89.30	256.10	7,012.1	-387.2	-387.2	-1,030.3	1,040.6	1,040.6	3.13	0.21	-3.13
7,686.0	89.50	256.60	7,012.6	-398.3	-398.3	-1,076.0	1,086.6	1,086.6	1.15	0.43	1.06
7,734.0	89.70	256.30	7,012.9	-409.6	-409.6	-1,122.6	1,133.5	1,133.5	0.75	0.42	-0.63
7,781.0	91.00	258.20	7,012.6	-420.0	-420.0	-1,168.5	1,179.6	1,179.6	4.90	2.77	4.04
7,829.0	92.00	260.90	7,011.4	-428.7	-428.7	-1,215.7	1,227.1	1,227.1	6.00	2.08	5.63
7,876.0	92.20	263.00	7,009.6	-435.2	-435.2	-1,262.2	1,273.7	1,273.7	4.49	0.43	4.47
7,924.0	92.80	264.70	7,007.5	-440.4	-440.4	-1,309.8	1,321.5	1,321.5	3.75	1.25	3.54
7,971.0	92.70	266.10	7,005.3	-444.1	-444.1	-1,356.6	1,368.4	1,368.4	2.98	-0.21	2.98
8,019.0	91.40	267.20	7,003.6	-446.9	-446.9	-1,404.5	1,416.3	1,416.3	3.55	-2.71	2.29
8,066.0	89.40	267.60	7,003.2	-449.1	-449.1	-1,451.5	1,463.3	1,463.3	4.34	-4.26	0.85
8,115.0	89.20	267.90	7,003.8	-451.0	-451.0	-1,500.4	1,512.3	1,512.3	0.74	-0.41	0.61
8,162.0	90.50	269.10	7,004.0	-452.2	-452.2	-1,547.4	1,559.3	1,559.3	3.76	2.77	2.55
8,209.0	91.20	269.70	7,003.3	-452.7	-452.7	-1,594.4	1,606.3	1,606.3	1.96	1.49	1.28
8,256.0	91.90	269.80	7,002.0	-452.9	-452.9	-1,641.4	1,653.3	1,653.3	1.50	1.49	0.21
8,304.0	91.70	269.50	7,000.5	-453.2	-453.2	-1,689.4	1,701.2	1,701.2	0.75	-0.42	-0.63
8,351.0	91.00	269.60	6,999.4	-453.6	-453.6	-1,736.3	1,748.2	1,748.2	1.50	-1.49	0.21
8,399.0	90.20	270.70	6,998.9	-453.5	-453.5	-1,784.3	1,796.2	1,796.2	2.83	-1.67	2.29
8,446.0	90.80	272.00	6,998.5	-452.3	-452.3	-1,831.3	1,843.1	1,843.1	3.05	1.28	2.77
8,495.0	91.20	272.10	6,997.6	-450.6	-450.6	-1,880.3	1,892.0	1,892.0	0.84	0.82	0.20
8,542.0	90.90	272.00	6,996.8	-448.9	-448.9	-1,927.2	1,938.9	1,938.9	0.67	-0.64	-0.21

Company: NOBLE ENERGY INC WELD COUNTY CO
 Project: SEC.16-T3N-R65W
 Site: MEGAN H16-99HZ PAD 16-T3N-65W
 Well: UPRC H17-99HZ
 Wellbore: Wellbore #1
 Design: Wellbore #1

Local Co-ordinate Reference: Well UPRC H17-99HZ
 TVD Reference: RKB @ 4869.0ft (ENSGN 134 RKB 13)
 MD Reference: RKB @ 4869.0ft (ENSGN 134 RKB 13)
 North Reference: True
 Survey Calculation Method: Minimum Curvature
 Database: Landmark





Survey Report



Company: NOBLE ENERGY INC WELD COUNTY CO
 Project: SEC.16-T3N-R65W
 Site: MEGAN H16-99HZ PAD 16-T3N-65W
 Well: UPRC H17-99HZ
 Wellbore: Wellbore #1
 Design: Wellbore #1

Local Co-ordinate Reference: Well UPRC H17-99HZ
 TVD Reference: RKB @ 4869.0ft (ENSGN 134 RKB 13)
 MDR Reference: RKB @ 4869.0ft (ENSGN 134 RKB 13)
 North Reference: True
 Survey Calculation Method: Minimum Curvature
 Database: Landmark

Survey

Measured	Inclination	Azimuth	Vertical	Depth	+N/-S	+E/-W	Vertical	Dogleg	Build	Turn
(ft)	(°)	(°)	(ft)	(ft)	(ft)	(ft)	(ft)	(%/100ft)	(%/100ft)	(%/100ft)
8,589.0	89.00	271.80	6,996.8	-447.4	-1,974.2	1,985.8	4.06	-4.04	-0.43	0.00
8,688.0	89.60	271.40	6,998.0	-444.7	-2,070.2	2,081.7	0.75	0.63	-0.42	0.00
8,780.0	90.20	271.50	6,998.1	-442.3	-2,165.1	2,176.5	0.64	0.63	-0.11	0.00
8,875.0	90.50	272.90	6,997.6	-438.6	-2,260.1	2,271.3	1.51	0.32	1.47	0.00
8,970.0	88.50	277.80	6,998.4	-429.8	-2,354.6	2,365.6	5.57	-2.11	5.16	0.00
9,065.0	89.10	282.50	7,000.4	-413.0	-2,448.1	2,458.6	4.99	0.63	4.95	0.00
9,160.0	89.80	282.20	7,001.3	-392.7	-2,540.9	2,550.8	0.80	0.74	-0.32	0.00
9,254.0	89.80	275.50	7,001.6	-378.3	-2,633.7	2,643.2	7.13	0.00	-7.13	0.00
9,349.0	91.10	276.30	7,000.9	-368.5	-2,728.2	2,737.3	1.61	1.37	0.84	0.00
9,444.0	89.20	276.80	7,000.6	-357.7	-2,822.6	2,831.4	2.07	-2.00	0.53	0.00
9,540.0	90.60	275.20	7,000.8	-347.6	-2,918.0	2,926.5	2.21	1.46	-1.67	0.00
9,635.0	90.40	275.10	7,000.5	-339.1	-3,012.7	3,020.9	0.24	-0.21	-0.11	0.00
9,730.0	88.90	272.90	7,000.5	-332.5	-3,107.4	3,115.4	2.80	-1.58	-2.32	0.00
9,825.0	89.80	273.40	7,001.6	-327.3	-3,202.3	3,210.1	1.08	0.95	0.53	0.00
9,919.0	90.70	273.70	7,001.2	-321.4	-3,296.1	3,303.7	1.01	0.96	0.32	0.00
10,014.0	87.80	274.30	7,002.4	-314.8	-3,390.8	3,398.2	3.12	-3.05	0.63	0.00
10,109.0	87.50	275.30	7,006.3	-306.9	-3,485.4	3,492.6	1.10	-0.32	1.05	0.00
10,205.0	88.00	276.50	7,010.1	-297.0	-3,580.8	3,587.7	1.35	0.52	1.25	0.00
10,300.0	88.30	277.60	7,013.2	-285.4	-3,675.1	3,681.5	1.20	0.32	1.16	0.00
10,395.0	89.40	277.00	7,015.1	-273.3	-3,769.3	3,775.4	1.32	1.16	-0.63	0.00
10,490.0	89.10	277.60	7,016.3	-261.2	-3,863.5	3,869.2	0.71	-0.32	0.63	0.00
10,585.0	90.30	277.60	7,016.8	-248.7	-3,957.7	3,963.0	1.26	1.26	0.00	0.00
10,680.0	89.70	278.60	7,016.8	-235.3	-4,051.7	4,056.7	1.23	-0.63	1.05	0.00
10,775.0	90.20	278.10	7,016.9	-221.5	-4,145.7	4,150.2	0.74	0.53	-0.53	0.00
10,870.0	90.00	277.40	7,016.7	-208.7	-4,239.8	4,244.0	0.77	-0.21	-0.74	0.00
10,965.0	90.60	275.80	7,016.2	-197.7	-4,334.2	4,338.0	1.80	0.63	-1.68	0.00
11,060.0	91.20	275.80	7,014.8	-188.1	-4,428.7	4,432.2	0.63	0.63	0.00	0.00
11,156.0	92.40	275.80	7,011.7	-178.5	-4,524.2	4,527.4	1.25	1.25	0.00	0.00
11,251.0	93.00	275.70	7,007.3	-168.9	-4,618.6	4,621.5	0.64	0.63	-0.11	0.00
11,346.0	92.00	275.60	7,003.1	-159.6	-4,713.0	4,715.6	1.06	-1.05	-0.11	0.00
11,441.0	93.60	274.80	6,998.5	-151.0	-4,807.5	4,809.8	1.88	1.68	-0.84	0.00
11,536.0	94.00	274.50	6,992.2	-143.3	-4,902.0	4,904.1	0.53	0.42	-0.32	0.00
11,631.0	94.50	274.80	6,990.3	-141.3	-4,926.8	4,928.9	2.33	2.00	1.20	0.00
11,726.0	95.00	274.80	6,985.9	-136.9	-4,979.5	4,981.4	0.94	0.94	0.00	0.00

Checked By:

Approved By:

Date: