

# LOCATION DRAWING

VEGETATION:  
GRASSES

SURFACE USE:  
PASTURE

## REFERENCE POINT

LATITUDE: 39.26044

LONGITUDE: -107.93615

FOOTAGE: 1714 FSL 797 FEL

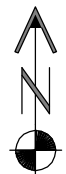
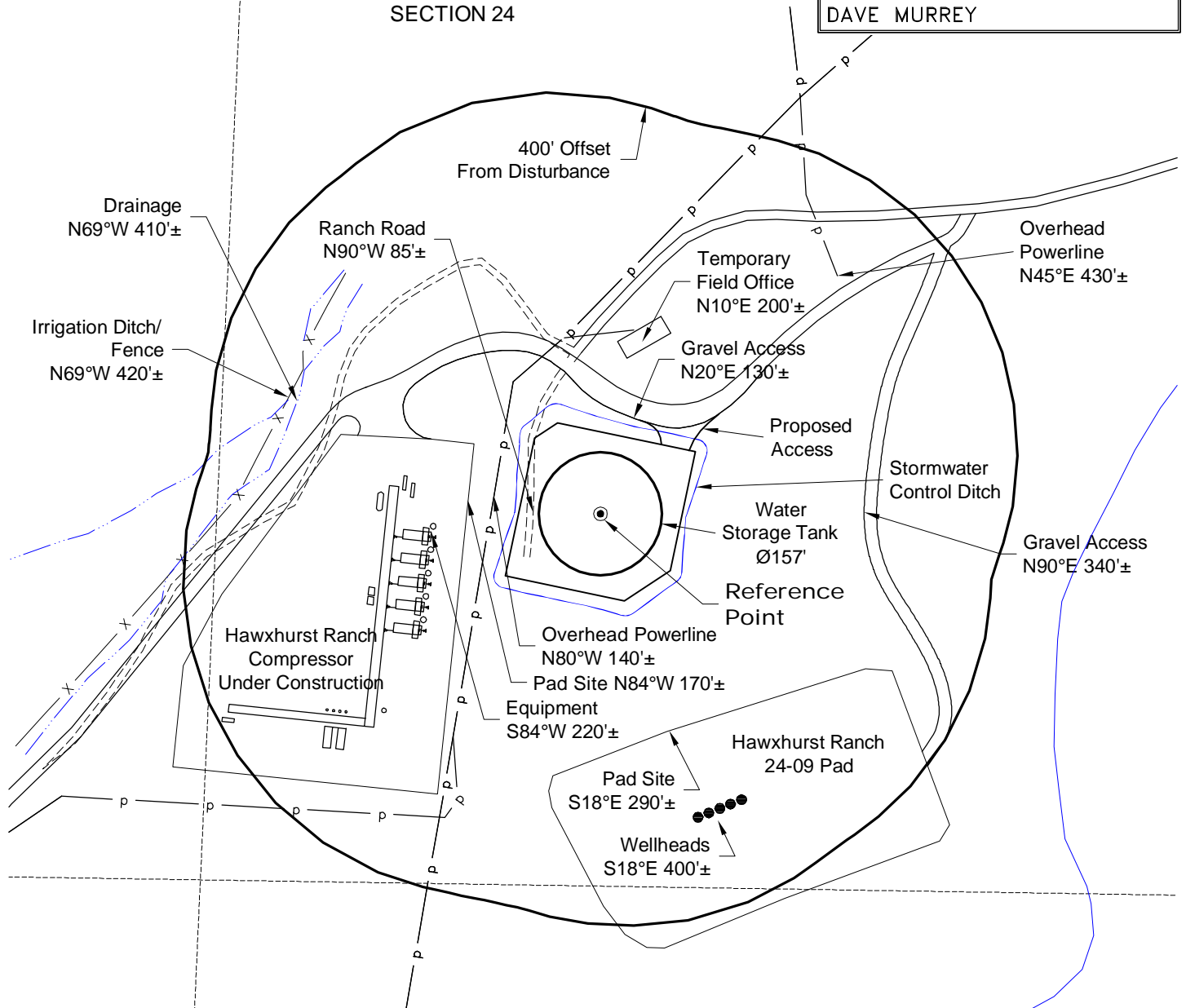
GROUND ELEVATION: 6394.3

PDOP: 2.5 DATE: 1/18/2012

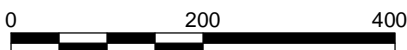
INSTRUMENT OPERATOR:

DAVE MURREY

NE1/4 SE1/4  
SECTION 24



North



Graphic Scale in Feet  
1" = 200'



LAND SURVEYING AND MAPPING  
LAFAYETTE - WINTER PARK  
Ph 303 666 0379 Fx 303 665 6320

**LARAMIE ENERGY II LLC**  
HAWXHURST 24-09 WATER TANK PAD

NE1/4 SE1/4 SECTION 24 T9S R95W  
6th PM MESA COUNTY COLORADO

2/1/12