

BILL BARRETT CORPORATION E-BILL  
DO NOT MAIL-1099 18TH ST,STE 2300W  
DENVER, Colorado

Egan State  
Egan State 43-36

PATTERSON/189

## Post Job Summary

### Cement Surface Casing

Date Prepared: 12/4/11  
Version: 1

Service Supervisor: SNYDER, JONATHAN

Submitted by: FRY, DOMINIK

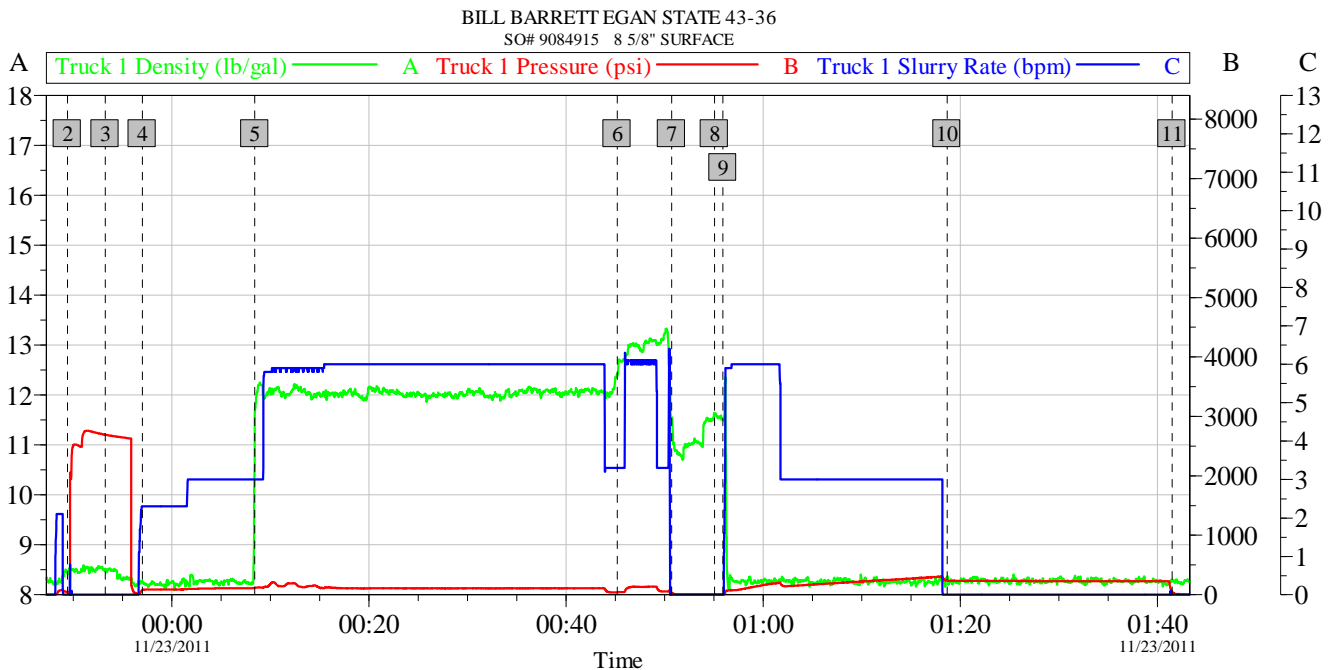
HALLIBURTON

# HALLIBURTON

## Pumping Schedule

Stage / Plug #	Fluid #	Fluid Type	Fluid Name	Surface Density lbm/gal	Avg Rate bbl/min	Surface Volume	Downhole Volume
1	1	Spacer	Water Spacer	8.34	3.00	30.0 bbl	30.0 bbl
1	2	Cement Slurry	Surface Varicem 12#	12.00	6.00	535.0 sacks	535.0 sacks
1	3	Cement Slurry	Surface Varicem 13#	13.00	6.00	130.0 sacks	130.0 sacks

## Data Acquisition



Global Event Log					
Intersection		TID	TIP	Intersection	TID TIP
2 Start Job	11/22/2011 23:49:25	8.458	48.00	3 Test Lines	11/22/2011 23:53:15 8.475 2693
4 Pump Spacer 1	11/22/2011 23:57:01	8.270	78.03	5 Pump Lead Cement	11/23/2011 00:08:26 11.61 117.0
6 Pump Tail Cement	11/23/2011 00:45:12	12.42	43.00	7 Shutdown	11/23/2011 00:50:44 11.55 32.58
8 Drop Top Plug	11/23/2011 00:55:04	11.64	10.000	9 Pump Displacement	11/23/2011 00:55:56 11.51 10.000
10 Shut In Well	11/23/2011 01:18:40	8.340	237.0	11 End Job	11/23/2011 01:41:30 8.309 44.68

Customer: BILL BARRETT	Job Date: 22-Nov-2011	Sales Order #: 9084915
Well Description: EGAN STATE 43-36	UWI: 05-001-09662-00	
SERVICE SUPERVISOR JONATHAN SNYDER	SERVICE OPERATOR JAMES WILEY	

OptiCem v6.4.9  
23-Nov-11 01:47

# HALLIBURTON

## Service Supervisor Reports

### Job Log

Date/Time	Chart #	Activity Code	Pump Rate	Cum Vol	Pump		Pressure (psig)	Comments
11/22/2011 21:00		Arrive at Location from Service Center						CONDUCT HAZARD HUNT AND FOUND NO VISIBLE HAZARDS TO PREVENT US FROM PERFORMING THE JOB
11/22/2011 23:00		Pre-Job Safety Meeting						HELD SAFETY MEETING WITH ALL EMPLOYEES AND ALL 3RD PARTY PERSONELL
11/22/2011 23:49		Start Job						
11/22/2011 23:53		Test Lines						PRESSURE TEST LINES TO 2700 PSI
11/22/2011 23:57		Pump Spacer 1	4	30			110.0	W/ RIG WATER
11/23/2011 00:08		Pump Lead Cement	6	209			125.0	535 SKS SURFACE VARICEM MIXED @ 12 PPG W/ RIG WATER
11/23/2011 00:45		Pump Tail Cement	6	40			105.0	130 SKS SURFACE VARICEM MIXED @ 13 PPG W/ RIG WATER
11/23/2011 00:55		Drop Top Plug						PLUG PRELOADED
11/23/2011 00:55		Clean Lines						CLEANED LINES ON TOP OF PLUG
11/23/2011 00:55		Pump Displacement	4	83			299.0	W/ RIG WATER, ORIGINALLY CALCULATED 114 BBL DISPLACE, COMPANY MAN WANTED TO LEAVE 30 BBL IN CASING, SO WE ONLY PUMPED 83 BBL DISPLACE.
11/23/2011 01:18		Shut In Well					299.0	SHUTDOWN AND SHUT IN WELL, LEFT HEAD 2" STOP AND BULL PLUG ON TOP OF THE CASING
11/23/2011 01:41		End Job						HAD 100 SKS PREMIUM G NEAT FOR TOP OFF CEMENT BUT WAS NOT USED
11/23/2011 16:18		Other						PER CUSTOMER REQUEST HE WANTED CEMENT RETURNS FROM PIT POURED INTO ANNULUS VIA USE OF BUCKETS

# HALLIBURTON

## The Road to Excellence Starts with Safety

<b>Sold To #:</b> 343492		<b>Ship To #:</b> 2892633		<b>Quote #:</b>		<b>Sales Order #:</b> 9084915	
<b>Customer:</b> BILL BARRETT CORPORATION E-BILL				<b>Customer Rep:</b> SNYDER, LARRY			
<b>Well Name:</b> Egan State			<b>Well #:</b> 43-36			<b>API/UWI #:</b>	
<b>Field:</b>		<b>City (SAP):</b> KERSEY		<b>County/Parish:</b> Denver		<b>State:</b> Colorado	
<b>Lat:</b> N 39.832 deg. OR N 39 deg. 49 min. 55.632 secs.				<b>Long:</b> W 104.605 deg. OR W -105 deg. 23 min. 41.784 secs.			
<b>Contractor:</b> PATTERSON			<b>Rig/Platform Name/Num:</b> 189				
<b>Job Purpose:</b> Cement Surface Casing							
<b>Well Type:</b> Producing Well			<b>Job Type:</b> Cement Surface Casing				
<b>Sales Person:</b> FLING, MATTHEW			<b>Srvc Supervisor:</b> SNYDER, JONATHAN			<b>MBU ID Emp #:</b> 435616	

### Job Personnel

HES Emp Name	Exp Hrs	Emp #	HES Emp Name	Exp Hrs	Emp #	HES Emp Name	Exp Hrs	Emp #
DIRKS, RICHARD E		485940	IPSON, TIMOTHY John		485018	JEWELL, WILLIAM Uris		503358
SNYDER, JONATHAN Leroy		435616	WILEY, JAMES A		440080			

### Equipment

HES Unit #	Distance-1 way	HES Unit #	Distance-1 way	HES Unit #	Distance-1 way	HES Unit #	Distance-1 way
10025030	29 mile	10241536C	29 mile	10948695	29 mile	11106651	29 mile
11362287C	29 mile	11562562	29 mile	11566182	29 mile		

### Job Hours

Date	On Location Hours	Operating Hours	Date	On Location Hours	Operating Hours	Date	On Location Hours	Operating Hours
<b>TOTAL</b>			Total is the sum of each column separately					

### Job

Formation Name					Job Times			
Formation Depth (MD)	Top	Bottom			Called Out	Date	Time	Time Zone
Form Type		BHST			On Location	22 - Nov - 2011	17:30	MST
Job depth MD	1800. ft	Job Depth TVD	1800. ft		Job Started	22 - Nov - 2011	20:45	MST
Water Depth		Wk Ht Above Floor	4. ft		Job Completed	23 - Nov - 2011	23:49	MST
Perforation Depth (MD)	From	To			Departed Loc	23 - Nov - 2011	01:41	MST

### Well Data

Description	New / Used	Max pressure psig	Size in	ID in	Weight lbm/ft	Thread	Grade	Top MD ft	Bottom MD ft	Top TVD ft	Bottom TVD ft
Open Hole				12.25				.	1839.		
Surface Casing	Unknown		8.625	8.097	24.		N-80	.	1829.	.	.

### Sales/Rental/3<sup>rd</sup> Party (HES)

Description	Qty	Qty uom	Depth	Supplier
SHOE,CSG,TIGER TOOTH,8 5/8 IN 8RD	1	EA		
CLR,FLT,8-5/8 8RD 24-44PPF,2-3/4SSII	1	EA		
PLUG,CMTG,TOP,8 5/8,HWE,7.20 MIN/8.09 MA	1	EA		
CENTRALIZER ASSY - API - 8-5/8 CSG X	15	EA		
CLAMP - LIMIT - 8-5/8 - HINGED -	1	EA		
BASKET - CEMENT - 8 5/8 CSG X 12 1/4	1	EA		
KIT,HALL WELD-A	1	EA		

### Tools and Accessories

# HALLIBURTON

Type	Size	Qty	Make	Depth	Type	Size	Qty	Make	Depth	Type	Size	Qty	Make
Guide Shoe					Packer					Top Plug			
Float Shoe					Bridge Plug					Bottom Plug			
Float Collar					Retainer					SSR plug set			
Insert Float										Plug Container			
Stage Tool										Centralizers			

## Miscellaneous Materials

Gelling Agt		Conc		Surfactant		Conc		Acid Type		Qty		Conc	%
Treatment Fld		Conc		Inhibitor		Conc		Sand Type		Size		Qty	

## Fluid Data

### Stage/Plug #: 1

Fluid #	Stage Type	Fluid Name	Qty	Qty uom	Mixing Density lbm/gal	Yield ft3/sk	Mix Fluid Gal/sk	Rate bbl/min	Total Mix Fluid Gal/sk
1	Water Spacer		30.00	bbl	8.34	.0	.0	.0	
2	Surface Varicem 12#	VARICEM (TM) CEMENT (452009)	535.0	sacks	12.	2.19	12.46		12.46
	12.46 Gal	FRESH WATER							
3	Surface Varicem 13#	VARICEM (TM) CEMENT (452009)	130.0	sacks	13.	1.72	8.95		8.95
	8.95 Gal	FRESH WATER							
4	Top Off Mountain G 15.8#	CMT - PREMIUM - CLASS G, 94 LB SK (100003685)		sacks	15.8	1.15	5.0		5.0
	94 lbm	CMT - PREMIUM - CLASS G REG OR TYPE V, BULK (100003685)							
	5 Gal	FRESH WATER							

### Calculated Values

### Pressures

### Volumes

Displacement		Shut In: Instant		Lost Returns		Cement Slurry		Pad	
Top Of Cement		5 Min		Cement Returns		Actual Displacement		Treatment	
Frac Gradient		15 Min		Spacers		Load and Breakdown		Total Job	

### Rates

Circulating		Mixing		Displacement		Avg. Job	
Cement Left In Pipe	Amount	45 ft	Reason	Shoe Joint			
Frac Ring # 1 @	ID		Frac ring # 2 @	ID		Frac Ring # 3 @	ID
						Frac Ring # 4 @	ID

The Information Stated Herein Is Correct	Customer Representative Signature
--	-----------------------------------