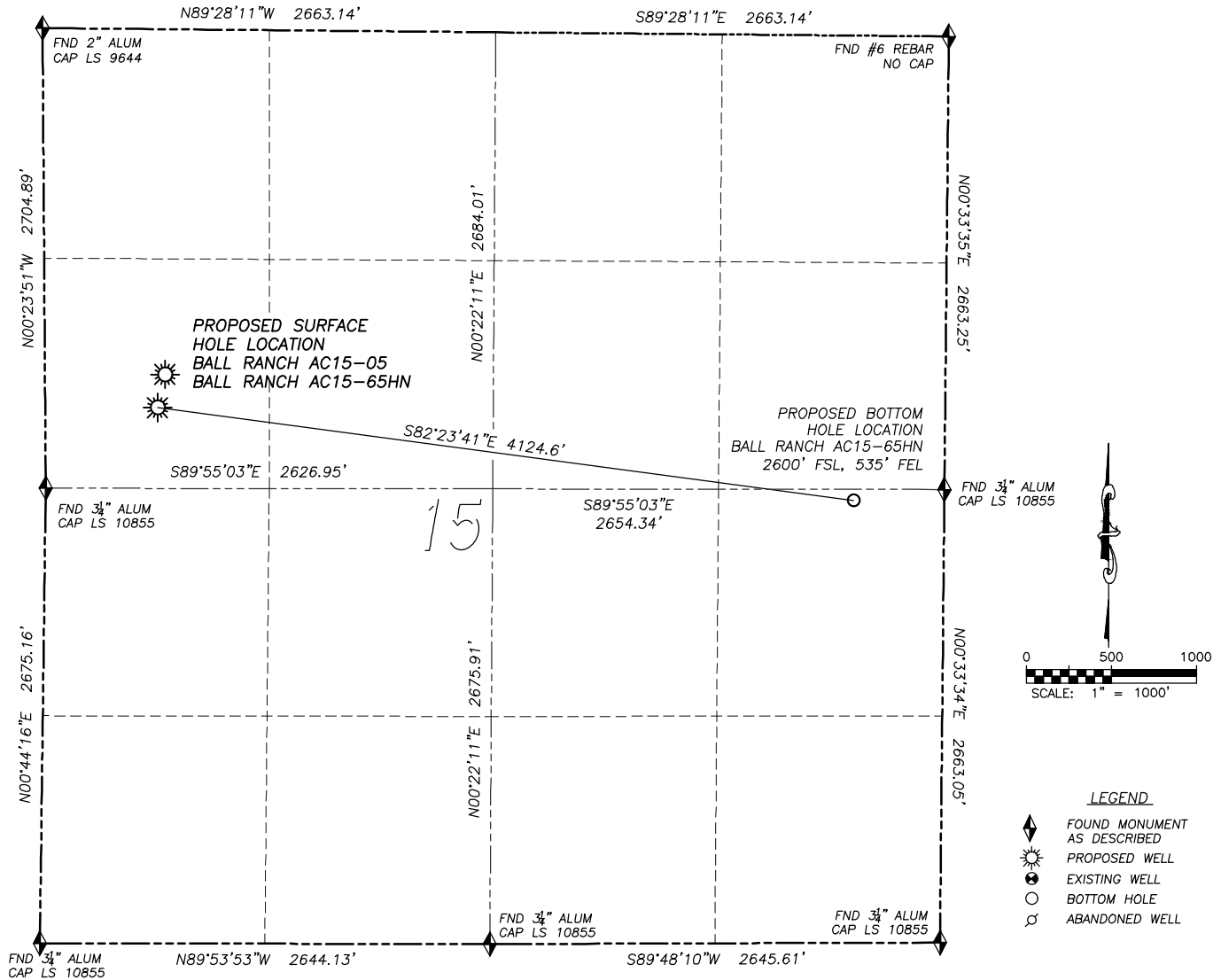


MULTI WELL PLAN DIRECTIONAL LAYOUT

BALL RANCH AC15-65HN, BALL RANCH AC15-05

SECTION 15, TOWNSHIP 7 NORTH, RANGE 63 WEST OF THE 6TH PRINCIPAL MERIDIAN

**NAD 83 LATITUDE AND LONGITUDE****BALL RANCH AC15-05 SURFACE HOLE:**

LATITUDE: N40.57582°
 LONGITUDE: W104.42935°
 ELEVATION: 4870'
 FOOTAGE: 2029' FNL, 705' FWL
 PDOP: 1.3
 QTR/QTR: SW4/NW4
 PROP LINE: 705'± WEST

NAD 83 LATITUDE AND LONGITUDE**BALL RANCH AC15-65HN SURFACE HOLE:**

LATITUDE: N40.57528°
 LONGITUDE: W104.42951°
 ELEVATION: 4870'
 FOOTAGE: 2225' FNL, 661' FWL
 PDOP: 1.3
 QTR/QTR: SW4/NW4
 PROP LINE: 661'± WEST

BOTTOM HOLE:

LATITUDE: N40.57378°
 LONGITUDE: W104.41479°
 FOOTAGE: 2600' FSL, 535' FEL

NEAREST EXISTING WELL:

NO WELLS IN THIS SECTION

MULTI WELL PLAN LOCATION DRAWING
BALL RANCH AC15-65HN, BALL RANCH AC15-05

SECTION 15, TOWNSHIP 7 NORTH, RANGE 63 WEST OF THE 6TH PRINCIPAL MERIDIAN

