

WILLIAMS PRODUCTION RMT COMPANY

PLAT #2 LOCATION LAYOUT FOR AP 21-20-695

SECTION 20, T6S, R95W, 6th P.M.

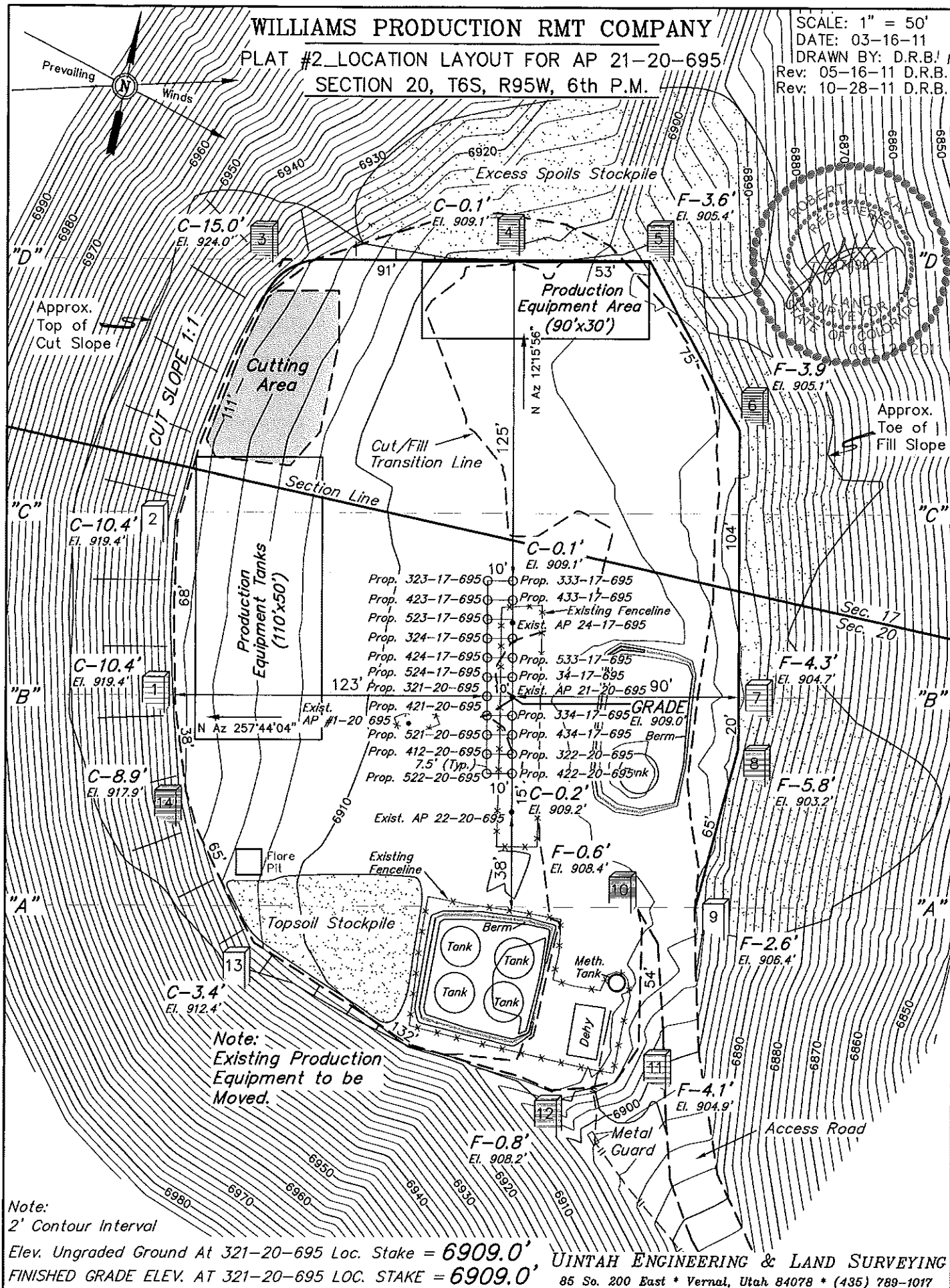
SCALE: 1" = 50'

DATE: 03-16-11

DRAWN BY: D.R.B.!

Rev: 05-16-11 D.R.B.

Rev: 10-28-11 D.R.B.



Note:
Existing Production
Equipment to be
Moved.

Note:
2' Contour Interval

Elev. Ungraded Ground At 321-20-695 Loc. Stake = 6909.0'
FINISHED GRADE ELEV. AT 321-20-695 LOC. STAKE = 6909.0'

UINTAH ENGINEERING & LAND SURVEYING
85 So. 200 East * Vernal, Utah 84078 * (435) 789-1017

WILLIAMS PRODUCTION RMT COMPANY
PLAT #3_TYPICAL CROSS SECTION FOR AP 21-20-695
SECTION 20, T6S, R95W, 6th P.M.

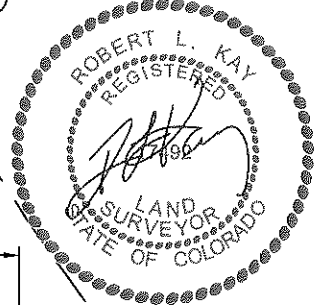
1" = 20'
X-Section
Scale
1" = 50'

DATE: 03-16-11
DRAWN BY: D.R.B.
Rev: 03-16-11 D.R.B.

Cut Slope = 1 : 1
(Typ.)

Preconstruction
Grade

Fill Slope = 1 1/2 : 1
(Typ.)



"D" - "D"

"C" - "C"

"B" - "B"

"A" - "A"

APPROXIMATE YARDAGES

(6") Topsoil Stripping	=	480 Cu. Yds.
(New Construction Only)		
Remaining Location	=	5,130 Cu. Yds.
TOTAL CUT	=	5,610 CU.YDS.
FILL	=	2,370 CU.YDS.
EXCESS MATERIAL	=	3,240 Cu. Yds.
Topsoil	=	480 Cu. Yds.
EXCESS UNBALANCE	=	2,760 Cu. Yds.
(After Interim Rehabilitation)		

* NOTE:
FILL QUANTITY INCLUDES
5% FOR COMPACTION

UINTAH ENGINEERING & LAND SURVEYING
85 So. 200 East * Vernal, Utah 84078 * (435) 789-1017