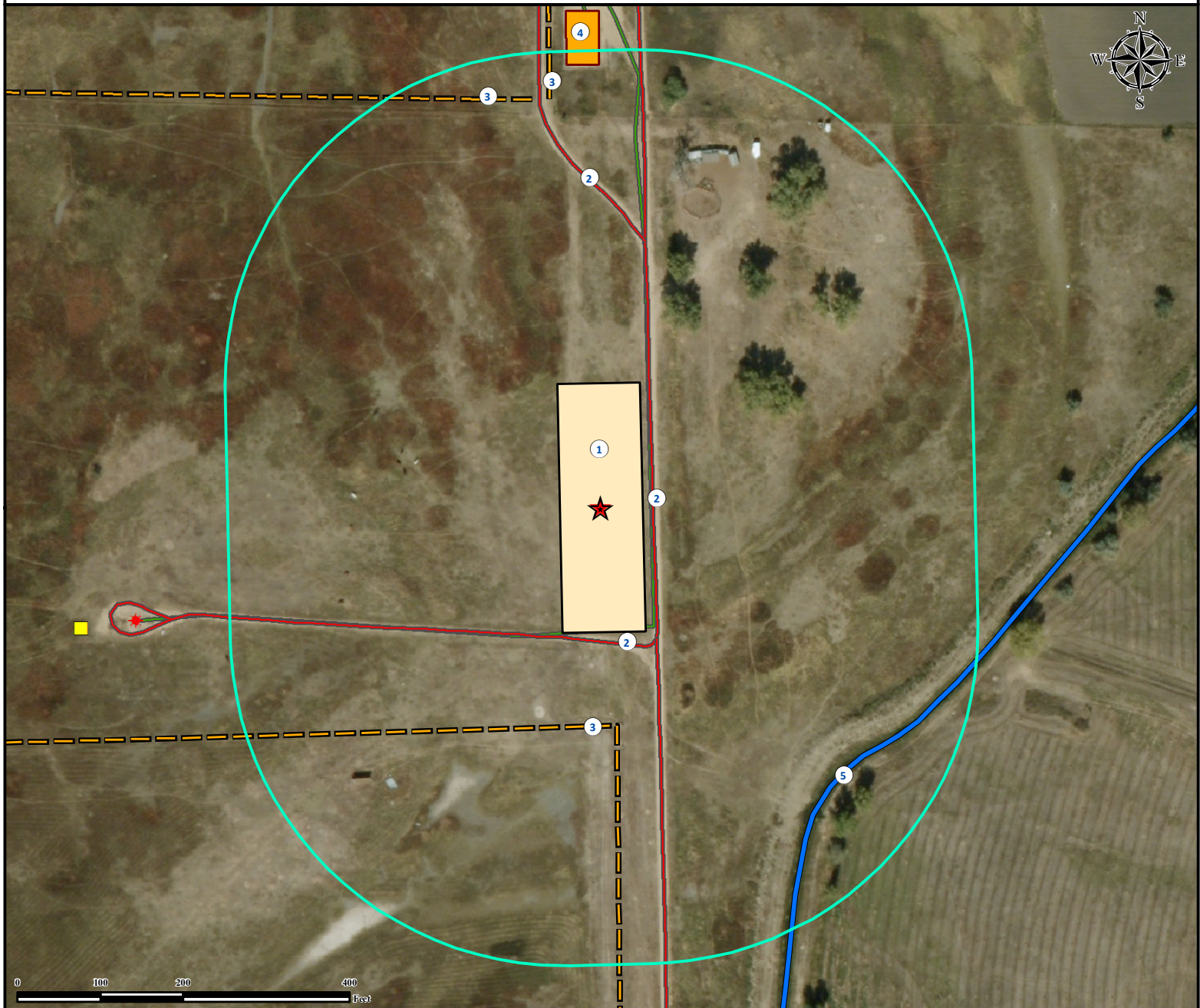


Location Drawing

HEIN 2 - 1 FACILITY

SW¼ NE¼ SECTION 1, TOWNSHIP 1 NORTH, RANGE 67 WEST OF THE 6TH PRINCIPAL MERIDIAN



- | | |
|--|-------------------------------------|
| 1. Proposed HEIN 2-1 Facility. | 4. Facilities Enclosure is ±533' N. |
| 2. Private Roads are ±62' E, ±160' S, and ±342' N. | 5. Ditch is ±432' SE. |
| 3. Fences are ±259' S, ±496' NW, and ±499' NW. | |

Legend

- | | | |
|--|--|---|
| ■ Utility Box | ■ Facilities Enclosure | — Ditch |
| ★ Existing Well | Proposed Facility | - - - Fence |
| ★ Reference Point | 400' Radius | — Private Road |
| | | — Underground Pipeline |

Reference Location

** All Measurements are Made from
★ Reference Point **
 Lat: 40.082395° Long: -104.834796° (NAD83)
 Elevation: 4895 Feet
 FNL: 1847' FEL: 1344'



Use our resources to find yours!
www.petro-fs.com
 (303) 928-7128

Field Date: 1/19/2012
 Drafting Date: 1/26/2012
 Drafter: HMB
 Checked By: BHF

Surface Use: Dryland Pasture

Data Sources:
 - Aerial courtesy of Anadarko Petroleum Corporation (2010)

Prepared for:



KERR-MCGEE OIL & GAS ONSHORE LP