

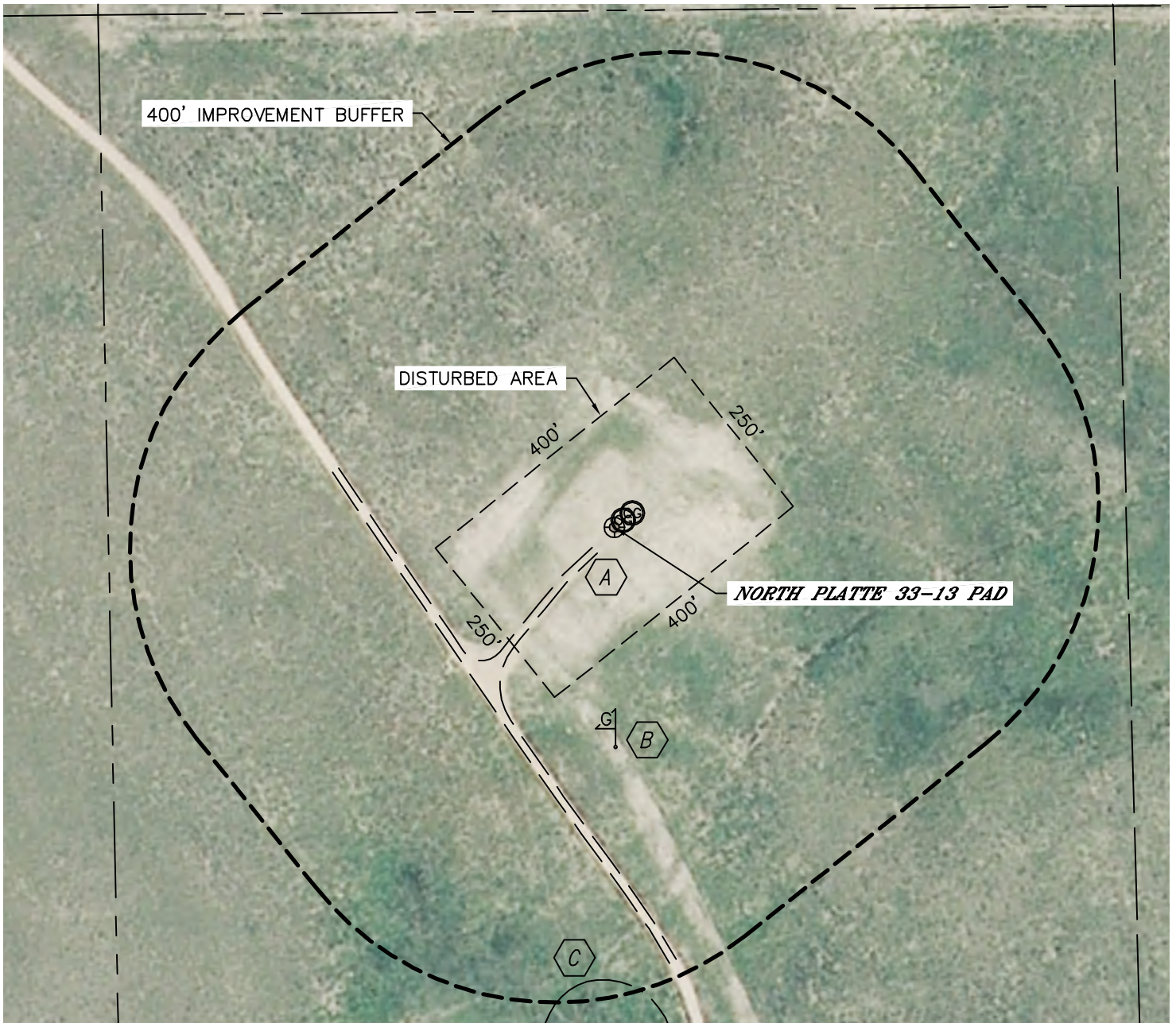


Lat40°, Inc. 1635 Foxtrail Drive, Suite 325 Loveland, CO 970-776-3321




LOCATION DRAWING

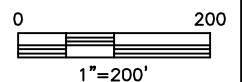
NORTH PLATTE 33-13

SECTION: 13
TOWNSHIP: 5N
RANGE: 63W



IMPROVEMENTS:
(MEASURED FROM THE EXISTING NORTH PLATTE 33-13 LOCATION)

-  FIELD ROAD 39' & 255' SW
-  GAS MARKER 288' S
-  POND 593' S



NEAREST: BUILDING 3230' E, PUBLIC ROAD 5280'+,
ABOVE GROUND UTILITY 3164' N, RAILROAD 5280'+, PROPERTY LINE 2003' E

DATE: 1/10/2012
PROJECT#: 2012003