

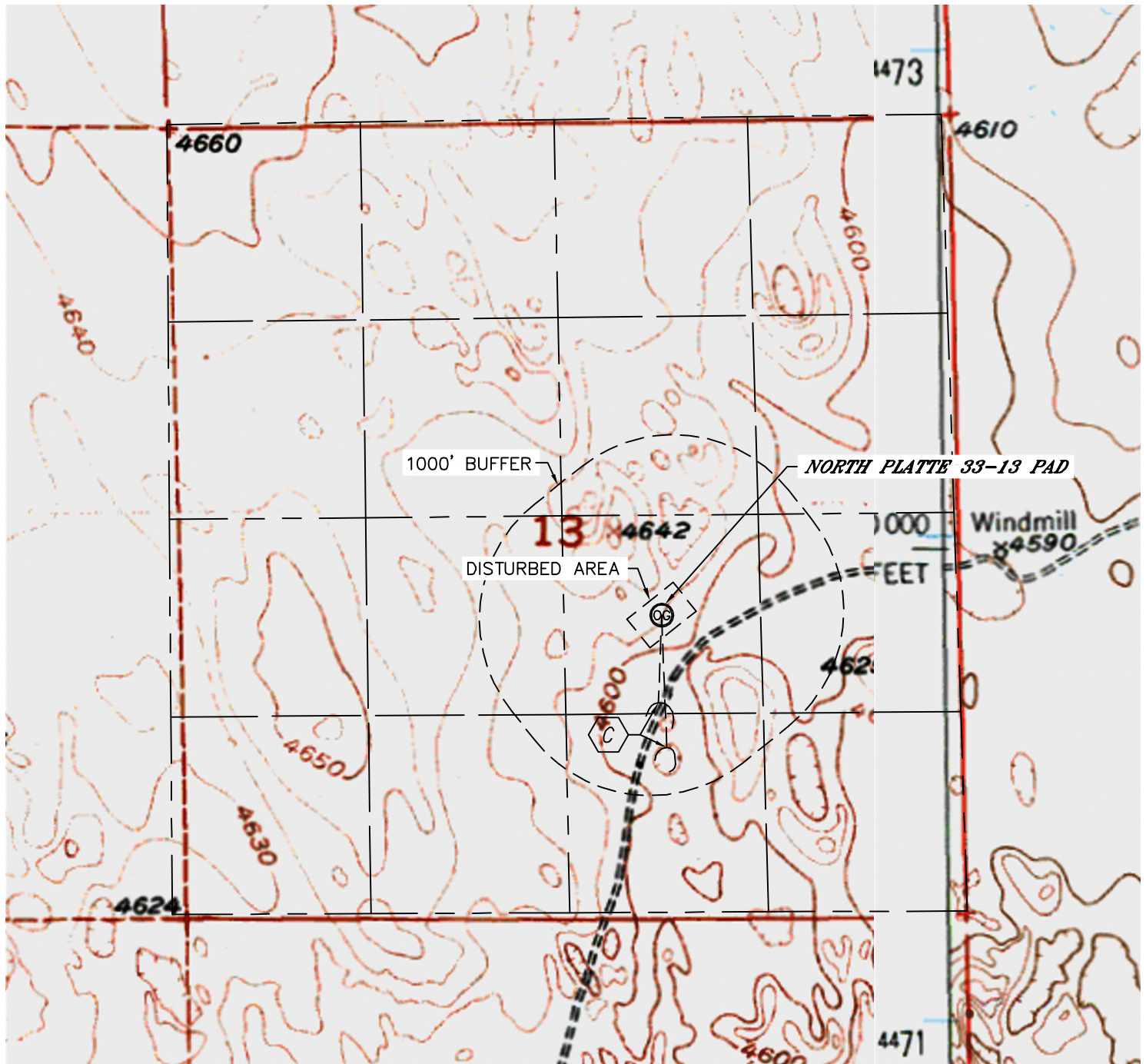


Lat40°, Inc. 1635 Foxtrail Drive, Suite 325 Loveland, CO 970-776-3321

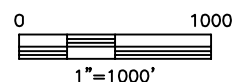
HYDROLOGY MAP

NORTH PLATTE 33-13

SECTION: 13
TOWNSHIP: 5N
RANGE: 63W



POND 593' & 898' S



DATE: 1/10/2012
PROJECT#: 2012003