

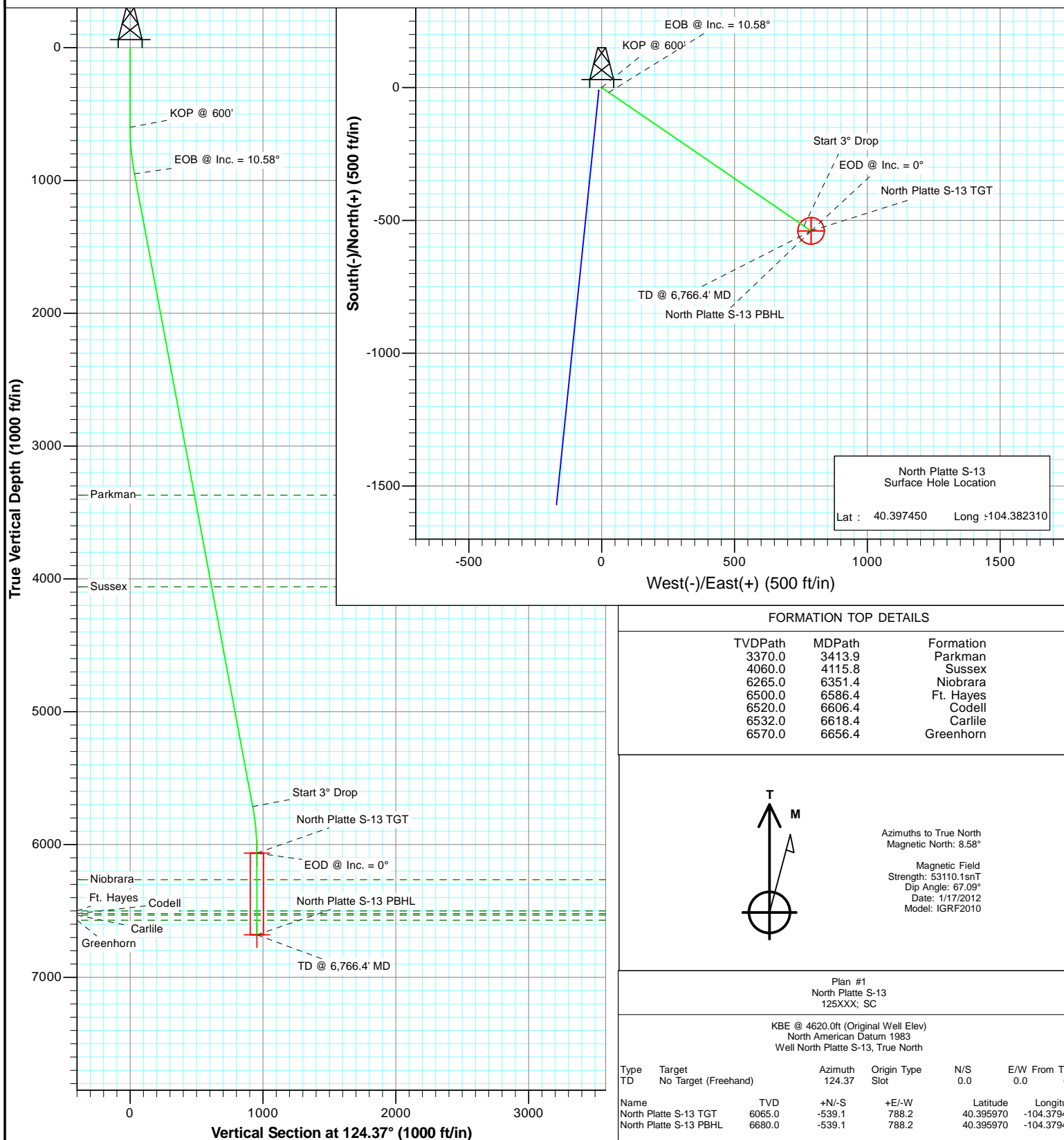


Project: Weld County
Site: North Platte 33-13 Pad
Well: North Platte S-13
Wellbore: OH
Plan: Plan #1



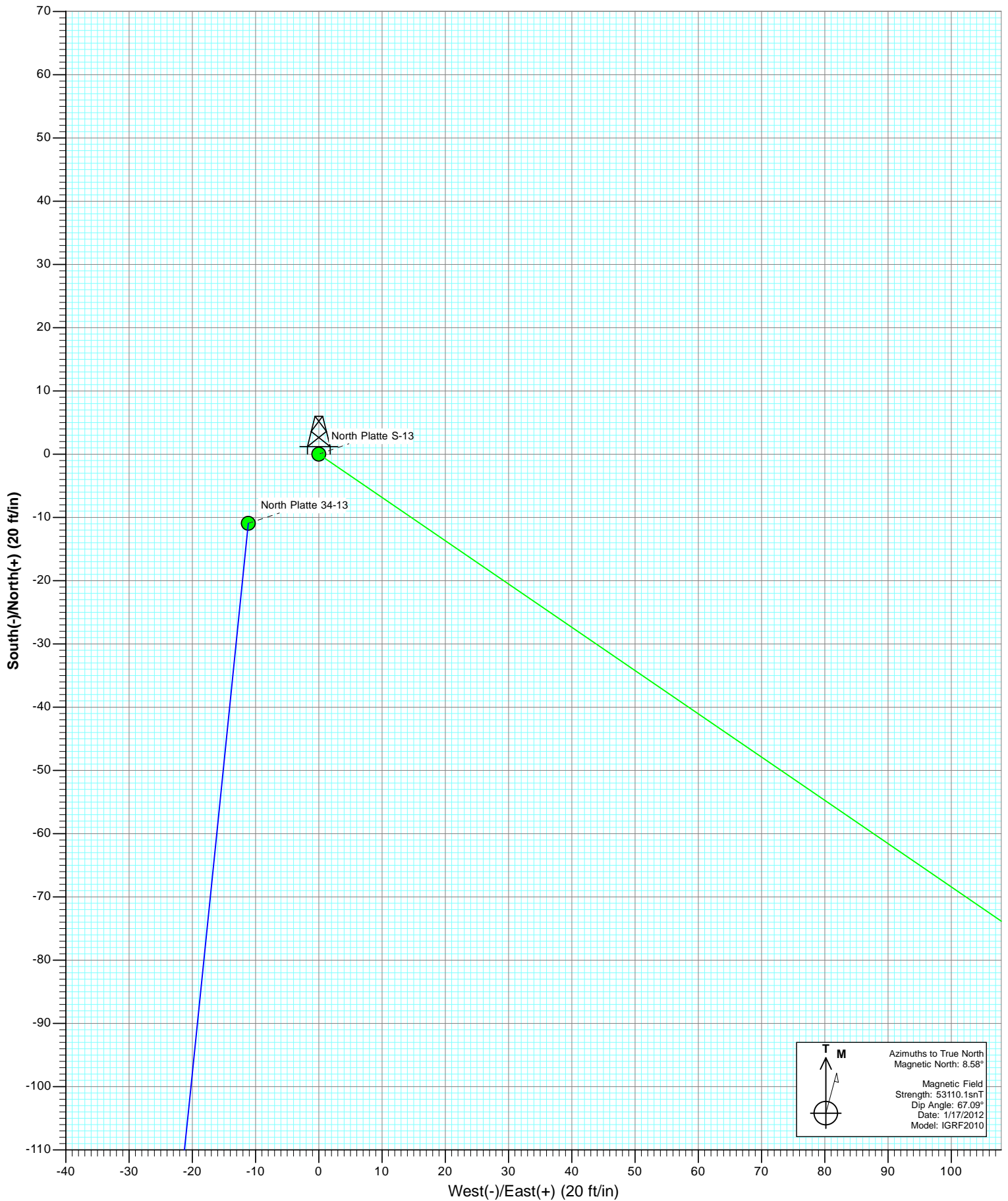
SECTION DETAILS

Sec	MD	Inc	Azi	TVD	+N/-S	+E/-W	Dleg	TFace	VSec	Target
1	0.0	0.00	0.00	0.0	0.0	0.0	0.00	0.00	0.0	
2	600.0	0.00	0.00	600.0	0.0	0.0	0.00	0.00	0.0	
3	952.8	10.58	124.37	950.8	-18.3	26.8	3.00	124.37	32.5	
4	5798.7	10.58	124.37	5714.2	-520.8	761.4	0.00	0.00	922.5	
5	6151.4	0.00	0.00	6065.0	-539.1	788.2	3.00	180.00	955.0	North Platte S-13 TGT
6	6766.4	0.00	0.00	6680.0	-539.1	788.2	0.00	0.00	955.0	North Platte S-13 PBHL



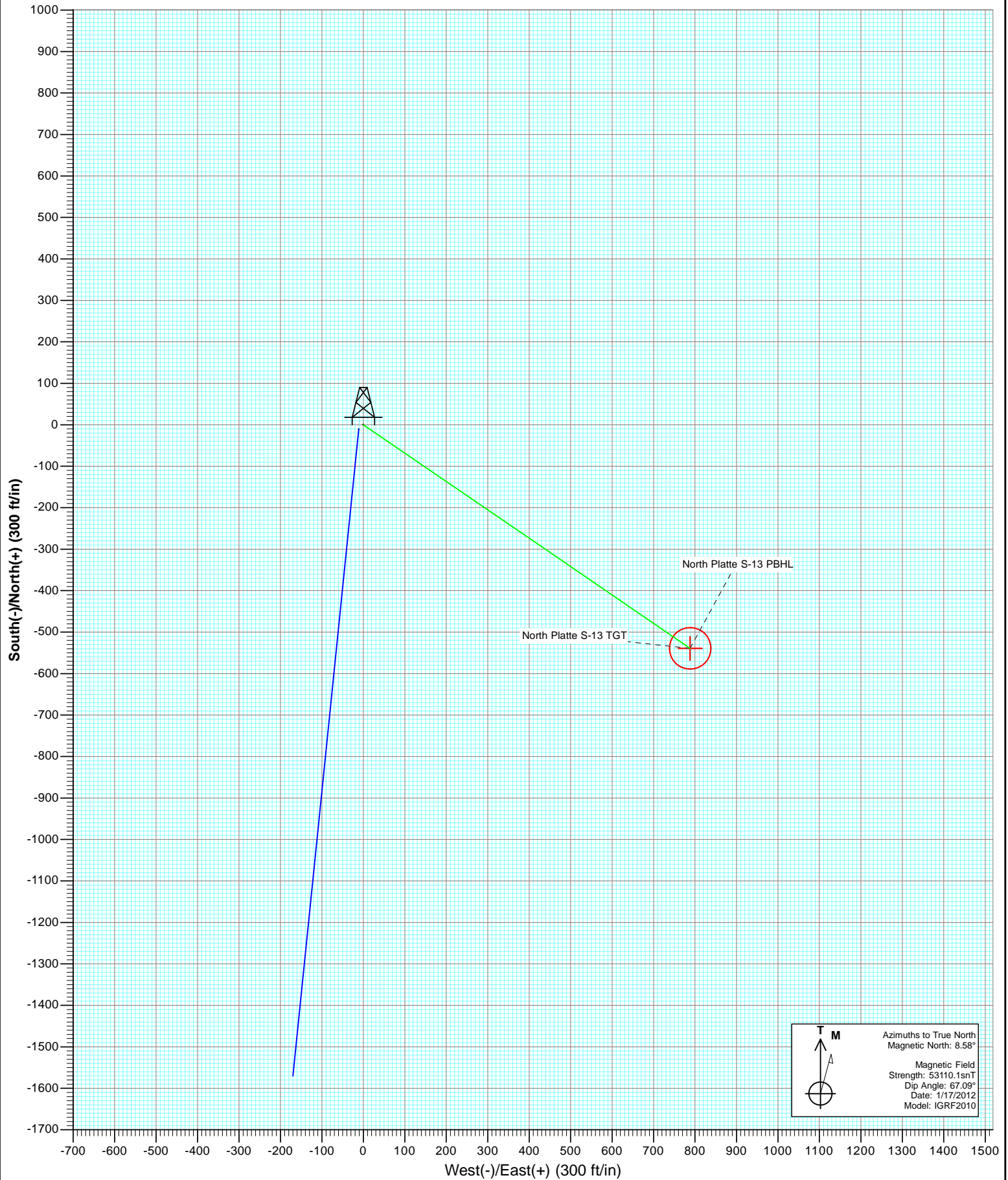


Project: Weld County
Site: North Platte 33-13 Pad
Well: North Platte S-13
Wellbore: OH
Plan: Plan #1



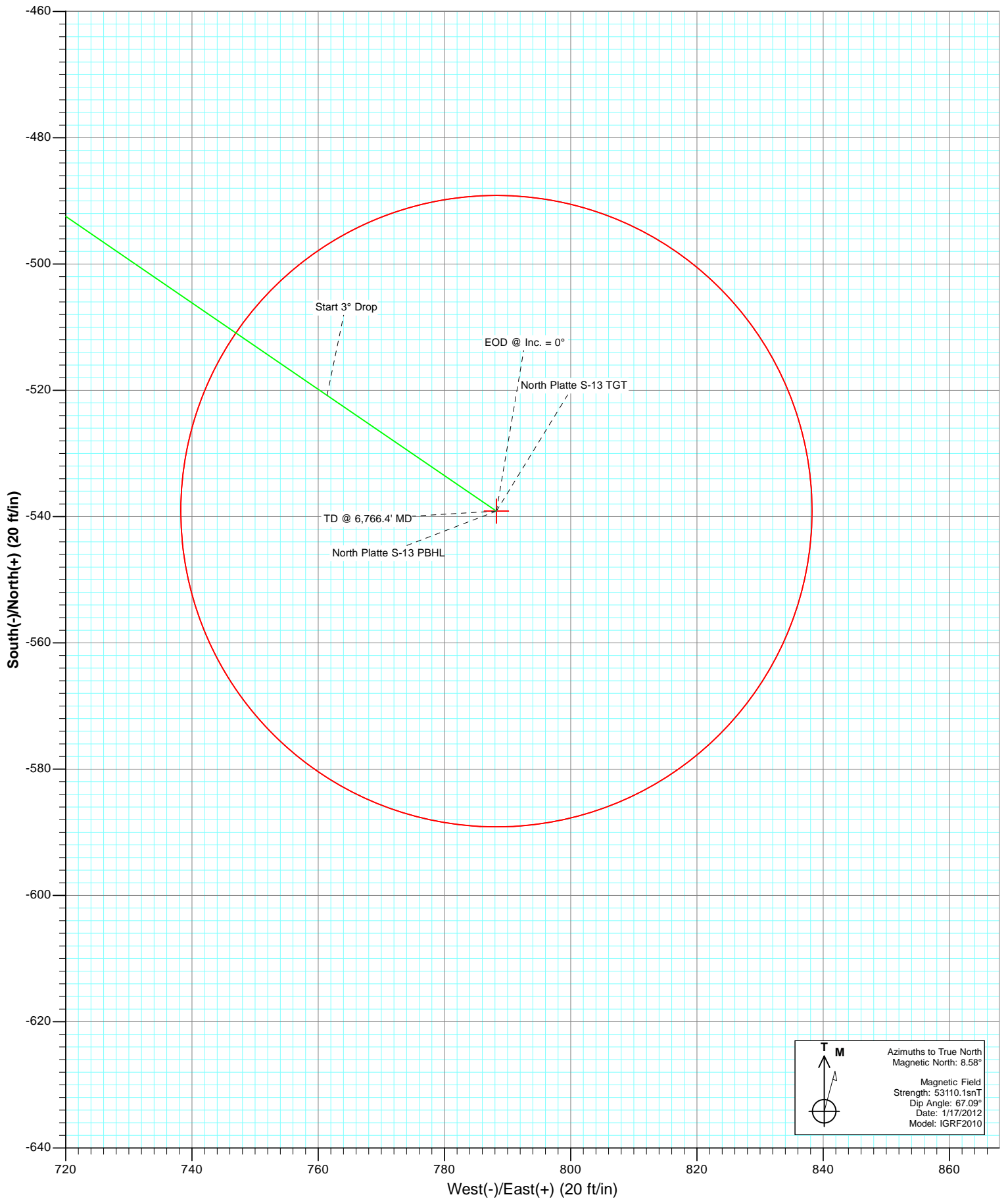


Project: Weld County
Site: North Platte 33-13 Pad
Well: North Platte S-13
Wellbore: OH
Plan: Plan #1





Project: Weld County
Site: North Platte 33-13 Pad
Well: North Platte S-13
Wellbore: OH
Plan: Plan #1



Cathedral Energy Services

Planning Report

Database:	USA EDM 5000 Multi Users DB	Local Co-ordinate Reference:	Well North Platte S-13
Company:	Bonanza Creek Energy Operating Company, LLC	TVD Reference:	KBE @ 4620.0ft (Original Well Elev)
Project:	Weld County	MD Reference:	KBE @ 4620.0ft (Original Well Elev)
Site:	North Platte 33-13 Pad	North Reference:	True
Well:	North Platte S-13	Survey Calculation Method:	Minimum Curvature
Wellbore:	OH		
Design:	Plan #1		

Project	Weld County		
Map System:	US State Plane 1983	System Datum:	Mean Sea Level
Geo Datum:	North American Datum 1983		
Map Zone:	Colorado Northern Zone		

Site		North Platte 33-13 Pad			
Site Position:		Northing:	1,389,596.06 ft	Latitude:	40.397450
From:	Lat/Long	Easting:	3,311,298.33 ft	Longitude:	-104.382310
Position Uncertainty:	0.0 ft	Slot Radius:	13.200 in	Grid Convergence:	0.72 °

Well	North Platte S-13					
Well Position	+N/-S	0.0 ft	Northing:	1,389,596.04 ft	Latitude:	40.397450
	+E/-W	0.0 ft	Easting:	3,311,298.33 ft	Longitude:	-104.382310
Position Uncertainty		0.0 ft	Wellhead Elevation:	ft	Ground Level:	4,610.0 ft

Wellbore	OH				
Magnetics	Model Name	Sample Date	Declination	Dip Angle	Field Strength
			(°)	(°)	(nT)
	IGRF2010	1/17/2012	8.58	67.09	53,110

Design	Plan #1			
Audit Notes:				
Version:	Phase:	PLAN	Tie On Depth:	0.0
Vertical Section:	Depth From (TVD)	+N/-S	+E/-W	Direction
	(ft)	(ft)	(ft)	(°)
	0.0	0.0	0.0	124.37

Plan Sections										
Measured	Inclination	Azimuth	Vertical	+N/-S	+E/-W	Dogleg	Build	Turn	TFO	Target
Depth	(°)	(°)	Depth	(ft)	(ft)	Rate	Rate	Rate	(°)	
(ft)			(ft)			(°/100ft)	(°/100ft)	(°/100ft)		
0.0	0.00	0.00	0.0	0.0	0.0	0.00	0.00	0.00	0.00	
600.0	0.00	0.00	600.0	0.0	0.0	0.00	0.00	0.00	0.00	
952.8	10.58	124.37	950.8	-18.3	26.8	3.00	3.00	0.00	124.37	
5,798.7	10.58	124.37	5,714.2	-520.8	761.4	0.00	0.00	0.00	0.00	
6,151.4	0.00	0.00	6,065.0	-539.1	788.2	3.00	-3.00	0.00	180.00	North Platte S-13 TG
6,766.4	0.00	0.00	6,680.0	-539.1	788.2	0.00	0.00	0.00	0.00	North Platte S-13 PB

Cathedral Energy Services

Planning Report

Database:	USA EDM 5000 Multi Users DB	Local Co-ordinate Reference:	Well North Platte S-13
Company:	Bonanza Creek Energy Operating Company, LLC	TVD Reference:	KBE @ 4620.0ft (Original Well Elev)
Project:	Weld County	MD Reference:	KBE @ 4620.0ft (Original Well Elev)
Site:	North Platte 33-13 Pad	North Reference:	True
Well:	North Platte S-13	Survey Calculation Method:	Minimum Curvature
Wellbore:	OH		
Design:	Plan #1		

Planned Survey

Measured Depth (ft)	Inclination (°)	Azimuth (°)	Vertical Depth (ft)	+N/-S (ft)	+E/-W (ft)	Vertical Section (ft)	Dogleg Rate (°/100ft)	Build Rate (°/100ft)	Comments / Formations
0.0	0.00	0.00	0.0	0.0	0.0	0.0	0.00	0.00	
100.0	0.00	0.00	100.0	0.0	0.0	0.0	0.00	0.00	
200.0	0.00	0.00	200.0	0.0	0.0	0.0	0.00	0.00	
300.0	0.00	0.00	300.0	0.0	0.0	0.0	0.00	0.00	
400.0	0.00	0.00	400.0	0.0	0.0	0.0	0.00	0.00	
500.0	0.00	0.00	500.0	0.0	0.0	0.0	0.00	0.00	
600.0	0.00	0.00	600.0	0.0	0.0	0.0	0.00	0.00	KOP @ 600'
700.0	3.00	124.37	700.0	-1.5	2.2	2.6	3.00	3.00	
800.0	6.00	124.37	799.6	-5.9	8.6	10.5	3.00	3.00	
900.0	9.00	124.37	898.8	-13.3	19.4	23.5	3.00	3.00	
952.8	10.58	124.37	950.8	-18.3	26.8	32.5	3.00	3.00	EOB @ Inc. = 10.58°
1,000.0	10.58	124.37	997.2	-23.2	34.0	41.2	0.00	0.00	
1,100.0	10.58	124.37	1,095.5	-33.6	49.1	59.5	0.00	0.00	
1,200.0	10.58	124.37	1,193.8	-44.0	64.3	77.9	0.00	0.00	
1,300.0	10.58	124.37	1,292.1	-54.3	79.5	96.3	0.00	0.00	
1,400.0	10.58	124.37	1,390.4	-64.7	94.6	114.6	0.00	0.00	
1,500.0	10.58	124.37	1,488.7	-75.1	109.8	133.0	0.00	0.00	
1,600.0	10.58	124.37	1,587.0	-85.4	124.9	151.4	0.00	0.00	
1,700.0	10.58	124.37	1,685.3	-95.8	140.1	169.7	0.00	0.00	
1,800.0	10.58	124.37	1,783.6	-106.2	155.2	188.1	0.00	0.00	
1,900.0	10.58	124.37	1,881.9	-116.6	170.4	206.5	0.00	0.00	
2,000.0	10.58	124.37	1,980.2	-126.9	185.6	224.8	0.00	0.00	
2,100.0	10.58	124.37	2,078.5	-137.3	200.7	243.2	0.00	0.00	
2,200.0	10.58	124.37	2,176.8	-147.7	215.9	261.6	0.00	0.00	
2,300.0	10.58	124.37	2,275.1	-158.0	231.0	279.9	0.00	0.00	
2,400.0	10.58	124.37	2,373.4	-168.4	246.2	298.3	0.00	0.00	
2,500.0	10.58	124.37	2,471.7	-178.8	261.4	316.7	0.00	0.00	
2,600.0	10.58	124.37	2,570.0	-189.1	276.5	335.0	0.00	0.00	
2,700.0	10.58	124.37	2,668.3	-199.5	291.7	353.4	0.00	0.00	
2,800.0	10.58	124.37	2,766.6	-209.9	306.8	371.8	0.00	0.00	
2,900.0	10.58	124.37	2,864.9	-220.2	322.0	390.1	0.00	0.00	
3,000.0	10.58	124.37	2,963.2	-230.6	337.2	408.5	0.00	0.00	
3,100.0	10.58	124.37	3,061.5	-241.0	352.3	426.8	0.00	0.00	
3,200.0	10.58	124.37	3,159.8	-251.3	367.5	445.2	0.00	0.00	
3,300.0	10.58	124.37	3,258.1	-261.7	382.6	463.6	0.00	0.00	
3,400.0	10.58	124.37	3,356.4	-272.1	397.8	481.9	0.00	0.00	
3,413.9	10.58	124.37	3,370.0	-273.5	399.9	484.5	0.00	0.00	Parkman
3,500.0	10.58	124.37	3,454.7	-282.5	413.0	500.3	0.00	0.00	
3,600.0	10.58	124.37	3,553.0	-292.8	428.1	518.7	0.00	0.00	
3,700.0	10.58	124.37	3,651.3	-303.2	443.3	537.0	0.00	0.00	
3,800.0	10.58	124.37	3,749.6	-313.6	458.4	555.4	0.00	0.00	
3,900.0	10.58	124.37	3,847.9	-323.9	473.6	573.8	0.00	0.00	
4,000.0	10.58	124.37	3,946.2	-334.3	488.8	592.1	0.00	0.00	
4,100.0	10.58	124.37	4,044.5	-344.7	503.9	610.5	0.00	0.00	
4,115.8	10.58	124.37	4,060.0	-346.3	506.3	613.4	0.00	0.00	Sussex
4,200.0	10.58	124.37	4,142.8	-355.0	519.1	628.9	0.00	0.00	
4,300.0	10.58	124.37	4,241.1	-365.4	534.2	647.2	0.00	0.00	
4,400.0	10.58	124.37	4,339.4	-375.8	549.4	665.6	0.00	0.00	
4,500.0	10.58	124.37	4,437.7	-386.1	564.5	684.0	0.00	0.00	
4,600.0	10.58	124.37	4,536.0	-396.5	579.7	702.3	0.00	0.00	
4,700.0	10.58	124.37	4,634.3	-406.9	594.9	720.7	0.00	0.00	
4,800.0	10.58	124.37	4,732.6	-417.2	610.0	739.1	0.00	0.00	

Cathedral Energy Services

Planning Report

Database:	USA EDM 5000 Multi Users DB	Local Co-ordinate Reference:	Well North Platte S-13
Company:	Bonanza Creek Energy Operating Company, LLC	TVD Reference:	KBE @ 4620.0ft (Original Well Elev)
Project:	Weld County	MD Reference:	KBE @ 4620.0ft (Original Well Elev)
Site:	North Platte 33-13 Pad	North Reference:	True
Well:	North Platte S-13	Survey Calculation Method:	Minimum Curvature
Wellbore:	OH		
Design:	Plan #1		

Planned Survey									
Measured Depth (ft)	Inclination (°)	Azimuth (°)	Vertical Depth (ft)	+N/-S (ft)	+E/-W (ft)	Vertical Section (ft)	Dogleg Rate (°/100ft)	Build Rate (°/100ft)	Comments / Formations
4,900.0	10.58	124.37	4,830.9	-427.6	625.2	757.4	0.00	0.00	
5,000.0	10.58	124.37	4,929.2	-438.0	640.3	775.8	0.00	0.00	
5,100.0	10.58	124.37	5,027.5	-448.3	655.5	794.2	0.00	0.00	
5,200.0	10.58	124.37	5,125.8	-458.7	670.7	812.5	0.00	0.00	
5,300.0	10.58	124.37	5,224.1	-469.1	685.8	830.9	0.00	0.00	
5,400.0	10.58	124.37	5,322.3	-479.5	701.0	849.3	0.00	0.00	
5,500.0	10.58	124.37	5,420.6	-489.8	716.1	867.6	0.00	0.00	
5,600.0	10.58	124.37	5,518.9	-500.2	731.3	886.0	0.00	0.00	
5,700.0	10.58	124.37	5,617.2	-510.6	746.5	904.4	0.00	0.00	
5,798.7	10.58	124.37	5,714.2	-520.8	761.4	922.5	0.00	0.00	Start 3° Drop
5,800.0	10.54	124.37	5,715.5	-520.9	761.6	922.7	3.00	-3.00	
5,900.0	7.54	124.37	5,814.3	-529.8	774.6	938.4	3.00	-3.00	
6,000.0	4.54	124.37	5,913.7	-535.7	783.3	949.0	3.00	-3.00	
6,100.0	1.54	124.37	6,013.6	-538.7	787.7	954.3	3.00	-3.00	
6,151.4	0.00	0.00	6,065.0	-539.1	788.2	955.0	3.00	-3.00	EOD @ Inc. = 0°
6,200.0	0.00	0.00	6,113.6	-539.1	788.2	955.0	0.00	0.00	
6,300.0	0.00	0.00	6,213.6	-539.1	788.2	955.0	0.00	0.00	
6,351.4	0.00	0.00	6,265.0	-539.1	788.2	955.0	0.00	0.00	Niobrara
6,400.0	0.00	0.00	6,313.6	-539.1	788.2	955.0	0.00	0.00	
6,500.0	0.00	0.00	6,413.6	-539.1	788.2	955.0	0.00	0.00	
6,586.4	0.00	0.00	6,500.0	-539.1	788.2	955.0	0.00	0.00	Ft. Hayes
6,600.0	0.00	0.00	6,513.6	-539.1	788.2	955.0	0.00	0.00	
6,606.4	0.00	0.00	6,520.0	-539.1	788.2	955.0	0.00	0.00	Codell
6,618.4	0.00	0.00	6,532.0	-539.1	788.2	955.0	0.00	0.00	Carlile
6,656.4	0.00	0.00	6,570.0	-539.1	788.2	955.0	0.00	0.00	Greenhorn
6,700.0	0.00	0.00	6,613.6	-539.1	788.2	955.0	0.00	0.00	
6,766.4	0.00	0.00	6,680.0	-539.1	788.2	955.0	0.00	0.00	TD @ 6,766.4' MD

Targets									
Target Name	Dip Angle (°)	Dip Dir. (°)	TVD (ft)	+N/-S (ft)	+E/-W (ft)	Northing (ft)	Easting (ft)	Latitude	Longitude
- hit/miss target									
- Shape									
North Platte S-13 TGT	0.00	0.00	6,065.0	-539.1	788.2	1,389,066.89	3,312,093.29	40.395970	-104.379480
- plan hits target center									
- Point									
North Platte S-13 PBHL	0.00	0.00	6,680.0	-539.1	788.2	1,389,066.89	3,312,093.29	40.395970	-104.379480
- plan hits target center									
- Circle (radius 50.0)									

Cathedral Energy Services

Planning Report

Database:	USA EDM 5000 Multi Users DB	Local Co-ordinate Reference:	Well North Platte S-13
Company:	Bonanza Creek Energy Operating Company, LLC	TVD Reference:	KBE @ 4620.0ft (Original Well Elev)
Project:	Weld County	MD Reference:	KBE @ 4620.0ft (Original Well Elev)
Site:	North Platte 33-13 Pad	North Reference:	True
Well:	North Platte S-13	Survey Calculation Method:	Minimum Curvature
Wellbore:	OH		
Design:	Plan #1		

Formations						
Measured Depth (ft)	Vertical Depth (ft)	Name	Lithology	Dip (°)	Dip Direction (°)	
3,413.9	3,370.0	Parkman				
4,115.8	4,060.0	Sussex				
6,351.4	6,265.0	Niobrara				
6,586.4	6,500.0	Ft. Hayes				
6,606.4	6,520.0	Codell				
6,618.4	6,532.0	Carlile				
6,656.4	6,570.0	Greenhorn				

Plan Annotations				
Measured Depth (ft)	Vertical Depth (ft)	Local Coordinates		Comment
		+N/-S (ft)	+E/-W (ft)	
600.0	600.0	0.0	0.0	KOP @ 600'
952.8	950.8	-18.3	26.8	EOB @ Inc. = 10.58°
5,798.7	5,714.2	-520.8	761.4	Start 3° Drop
6,151.4	6,065.0	-539.1	788.2	EOD @ Inc. = 0°
6,766.4	6,680.0	-539.1	788.2	TD @ 6,766.4' MD

Bonanza Creek Energy Operating Company, LLC

Weld County

North Platte 33-13 Pad

North Platte S-13

OH

Plan #1

Anticollision Report

17 January, 2012

Cathedral Energy Services

Anticollision Report

Company:	Bonanza Creek Energy Operating Company, LLC	Local Co-ordinate Reference:	Well North Platte S-13
Project:	Weld County	TVD Reference:	KBE @ 4620.0ft (Original Well Elev)
Reference Site:	North Platte 33-13 Pad	MD Reference:	KBE @ 4620.0ft (Original Well Elev)
Site Error:	0.0ft	North Reference:	True
Reference Well:	North Platte S-13	Survey Calculation Method:	Minimum Curvature
Well Error:	0.0ft	Output errors are at	2.00 sigma
Reference Wellbore	OH	Database:	USA EDM 5000 Multi Users DB
Reference Design:	Plan #1	Offset TVD Reference:	Offset Datum

Reference	Plan #1		
Filter type:	GLOBAL FILTER APPLIED: All wellpaths within 200'+ 100/1000 of reference		
Interpolation Method:	MD Interval 100.0ft	Error Model:	Systematic Ellipse
Depth Range:	Unlimited	Scan Method:	Closest Approach 3D
Results Limited by:	Maximum center-center distance of 876.6ft	Error Surface:	Elliptical Conic
Warning Levels Evaluated at:	2.00 Sigma		

Survey Tool Program		Date	1/17/2012		
From (ft)	To (ft)	Survey (Wellbore)	Tool Name	Description	
0.0	6,766.4	Plan #1 (OH)	MWD	Geolink MWD	

Summary						
Site Name	Reference Measured Depth (ft)	Offset Measured Depth (ft)	Distance Between Centres (ft)	Distance Between Ellipses (ft)	Separation Factor	Warning
Offset Well - Wellbore - Design						
North Platte 33-13 Pad						
North Platte 34-13 - OH - Plan #1	0.0	0.0	15.6			
North Platte 34-13 - OH - Plan #1	600.0	600.0	15.6	15.6	10,000.000	CC, ES

Cathedral Energy Services

Anticollision Report

Company:	Bonanza Creek Energy Operating Company, LLC	Local Co-ordinate Reference:	Well North Platte S-13
Project:	Weld County	TVD Reference:	KBE @ 4620.0ft (Original Well Elev)
Reference Site:	North Platte 33-13 Pad	MD Reference:	KBE @ 4620.0ft (Original Well Elev)
Site Error:	0.0ft	North Reference:	True
Reference Well:	North Platte S-13	Survey Calculation Method:	Minimum Curvature
Well Error:	0.0ft	Output errors are at	2.00 sigma
Reference Wellbore	OH	Database:	USA EDM 5000 Multi Users DB
Reference Design:	Plan #1	Offset TVD Reference:	Offset Datum

Offset Design North Platte 33-13 Pad - North Platte 34-13 - OH - Plan #1													Offset Site Error:	0.0 ft
Survey Program: 0-MWD													Offset Well Error:	0.0 ft
Reference		Offset		Semi Major Axis			Distance				Total	Separation	Warning	
Measured Depth (ft)	Vertical Depth (ft)	Measured Depth (ft)	Vertical Depth (ft)	Reference (ft)	Offset (ft)	Highside Toolface (°)	Offset Wellbore Centre +N/-S (ft)	+E/-W (ft)	Between Centres (ft)	Between Ellipses (ft)	Uncertainty Axis	Factor		
0.0	0.0	0.0	0.0	0.0	0.0	-134.44	-10.9	-11.1	15.6					
100.0	100.0	100.0	100.0	0.2	0.2	-134.44	-10.9	-11.1	15.6	15.6	0.00	N/A		
200.0	200.0	200.0	200.0	0.3	0.3	-134.44	-10.9	-11.1	15.6	15.6	0.00	N/A		
300.0	300.0	300.0	300.0	0.5	0.5	-134.44	-10.9	-11.1	15.6	15.6	0.00	N/A		
400.0	400.0	400.0	400.0	0.7	0.7	-134.44	-10.9	-11.1	15.6	15.6	0.00	N/A		
500.0	500.0	500.0	500.0	0.9	0.9	-134.44	-10.9	-11.1	15.6	15.6	0.00	N/A		
600.0	600.0	600.0	600.0	1.0	1.0	-134.44	-10.9	-11.1	15.6	15.6	0.00	N/A CC, ES		
700.0	700.0	699.3	699.3	1.2	1.2	103.96	-13.5	-11.4	18.1	18.1	0.00	N/A		
800.0	799.6	798.2	797.8	1.4	1.4	108.93	-21.1	-12.2	25.9	25.9	0.00	N/A		
900.0	898.8	896.3	895.1	1.6	1.6	112.67	-33.7	-13.5	38.9	38.9	0.00	N/A		
1,000.0	997.2	993.1	990.4	1.9	1.9	114.61	-51.0	-15.2	56.9	56.9	0.00	N/A		
1,100.0	1,095.5	1,088.8	1,083.5	2.2	2.3	113.25	-72.8	-17.4	78.2	78.2	0.00	N/A		
1,200.0	1,193.8	1,182.9	1,173.9	2.6	2.7	110.34	-98.7	-20.1	102.5	102.5	0.00	N/A		
1,300.0	1,292.1	1,278.7	1,265.1	2.9	3.2	107.48	-128.0	-23.1	129.1	129.1	0.00	N/A		
1,400.0	1,390.4	1,375.0	1,356.7	3.3	3.7	105.57	-157.4	-26.1	155.8	155.8	0.00	N/A		
1,500.0	1,488.7	1,471.2	1,448.3	3.6	4.2	104.22	-186.8	-29.0	182.7	182.7	0.00	N/A		
1,600.0	1,587.0	1,567.5	1,539.9	4.0	4.7	103.22	-216.2	-32.0	209.6	209.6	0.00	N/A		
1,700.0	1,685.3	1,663.7	1,631.5	4.3	5.2	102.44	-245.6	-35.0	236.6	236.6	0.00	N/A		
1,800.0	1,783.6	1,760.0	1,723.1	4.7	5.8	101.83	-275.0	-38.0	263.6	263.6	0.00	N/A		
1,900.0	1,881.9	1,856.2	1,814.7	5.0	6.3	101.33	-304.4	-41.0	290.7	290.7	0.00	N/A		
2,000.0	1,980.2	1,952.4	1,906.3	5.4	6.8	100.91	-333.8	-44.0	317.8	317.8	0.00	N/A		
2,100.0	2,078.5	2,048.7	1,997.9	5.7	7.4	100.56	-363.2	-47.0	344.8	344.8	0.00	N/A		
2,200.0	2,176.8	2,144.9	2,089.5	6.1	7.9	100.26	-392.6	-50.0	371.9	371.9	0.00	N/A		
2,300.0	2,275.1	2,241.2	2,181.1	6.5	8.4	100.00	-422.0	-53.0	399.0	399.0	0.00	N/A		
2,400.0	2,373.4	2,337.4	2,272.6	6.8	9.0	99.77	-451.4	-56.0	426.1	426.1	0.00	N/A		
2,500.0	2,471.7	2,433.7	2,364.2	7.2	9.5	99.58	-480.8	-59.0	453.2	453.2	0.00	N/A		
2,600.0	2,570.0	2,529.9	2,455.8	7.6	10.0	99.40	-510.2	-62.0	480.3	480.3	0.00	N/A		
2,700.0	2,668.3	2,626.2	2,547.4	7.9	10.6	99.24	-539.6	-65.0	507.4	507.4	0.00	N/A		
2,800.0	2,766.6	2,722.4	2,639.0	8.3	11.1	99.10	-569.0	-68.0	534.5	534.5	0.00	N/A		
2,900.0	2,864.9	2,818.7	2,730.6	8.7	11.7	98.97	-598.4	-71.0	561.7	561.7	0.00	N/A		
3,000.0	2,963.2	2,914.9	2,822.2	9.0	12.2	98.86	-627.8	-74.0	588.8	588.8	0.00	N/A		
3,100.0	3,061.5	3,011.1	2,913.8	9.4	12.7	98.75	-657.2	-77.0	615.9	615.9	0.00	N/A		
3,200.0	3,159.8	3,107.4	3,005.4	9.8	13.3	98.65	-686.6	-79.9	643.0	643.0	0.00	N/A		
3,300.0	3,258.1	3,203.6	3,097.0	10.1	13.8	98.56	-716.0	-82.9	670.2	670.2	0.00	N/A		
3,400.0	3,356.4	3,299.9	3,188.6	10.5	14.4	98.48	-745.4	-85.9	697.3	697.3	0.00	N/A		
3,500.0	3,454.7	3,396.1	3,280.2	10.8	14.9	98.40	-774.8	-88.9	724.4	724.4	0.00	N/A		
3,600.0	3,553.0	3,492.4	3,371.8	11.2	15.4	98.33	-804.3	-91.9	751.6	751.6	0.00	N/A		
3,700.0	3,651.3	3,588.6	3,463.4	11.6	16.0	98.27	-833.7	-94.9	778.7	778.7	0.00	N/A		
3,800.0	3,749.6	3,684.9	3,555.0	11.9	16.5	98.21	-863.1	-97.9	805.8	805.8	0.00	N/A		
3,900.0	3,847.9	3,781.1	3,646.6	12.3	17.1	98.15	-892.5	-100.9	832.9	832.9	0.00	N/A		
4,000.0	3,946.2	3,877.4	3,738.2	12.7	17.6	98.10	-921.9	-103.9	860.1	860.1	0.00	N/A		

Cathedral Energy Services

Anticollision Report

Company:	Bonanza Creek Energy Operating Company, LLC	Local Co-ordinate Reference:	Well North Platte S-13
Project:	Weld County	TVD Reference:	KBE @ 4620.0ft (Original Well Elev)
Reference Site:	North Platte 33-13 Pad	MD Reference:	KBE @ 4620.0ft (Original Well Elev)
Site Error:	0.0ft	North Reference:	True
Reference Well:	North Platte S-13	Survey Calculation Method:	Minimum Curvature
Well Error:	0.0ft	Output errors are at	2.00 sigma
Reference Wellbore	OH	Database:	USA EDM 5000 Multi Users DB
Reference Design:	Plan #1	Offset TVD Reference:	Offset Datum

Reference Depths are relative to KBE @ 4620.0ft (Original Well Elev)

Offset Depths are relative to Offset Datum

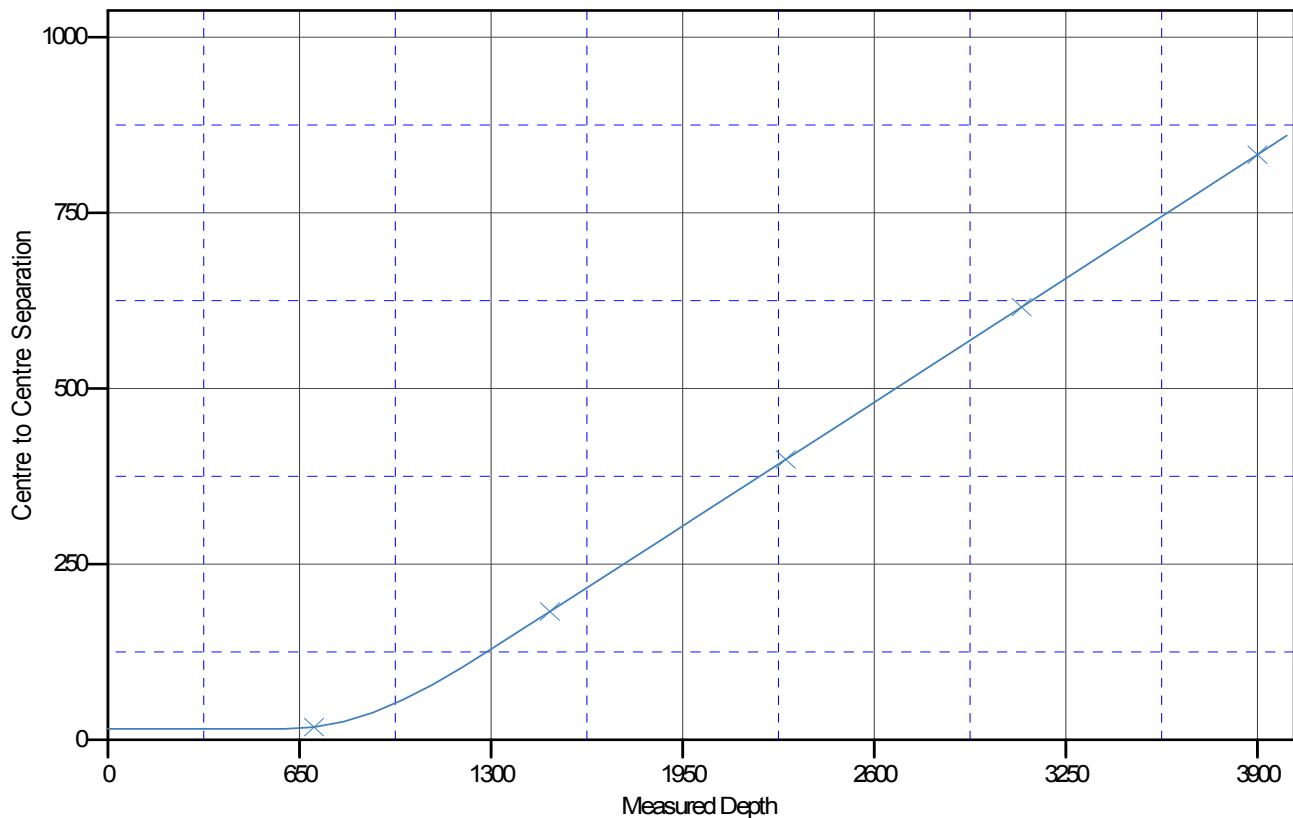
Central Meridian is -105.500000 °

Coordinates are relative to: North Platte S-13

Coordinate System is US State Plane 1983, Colorado Northern Zone

Grid Convergence at Surface is: 0.72°

Ladder Plot



LEGEND

North Platte 34-13, OH, Plan #1 V0