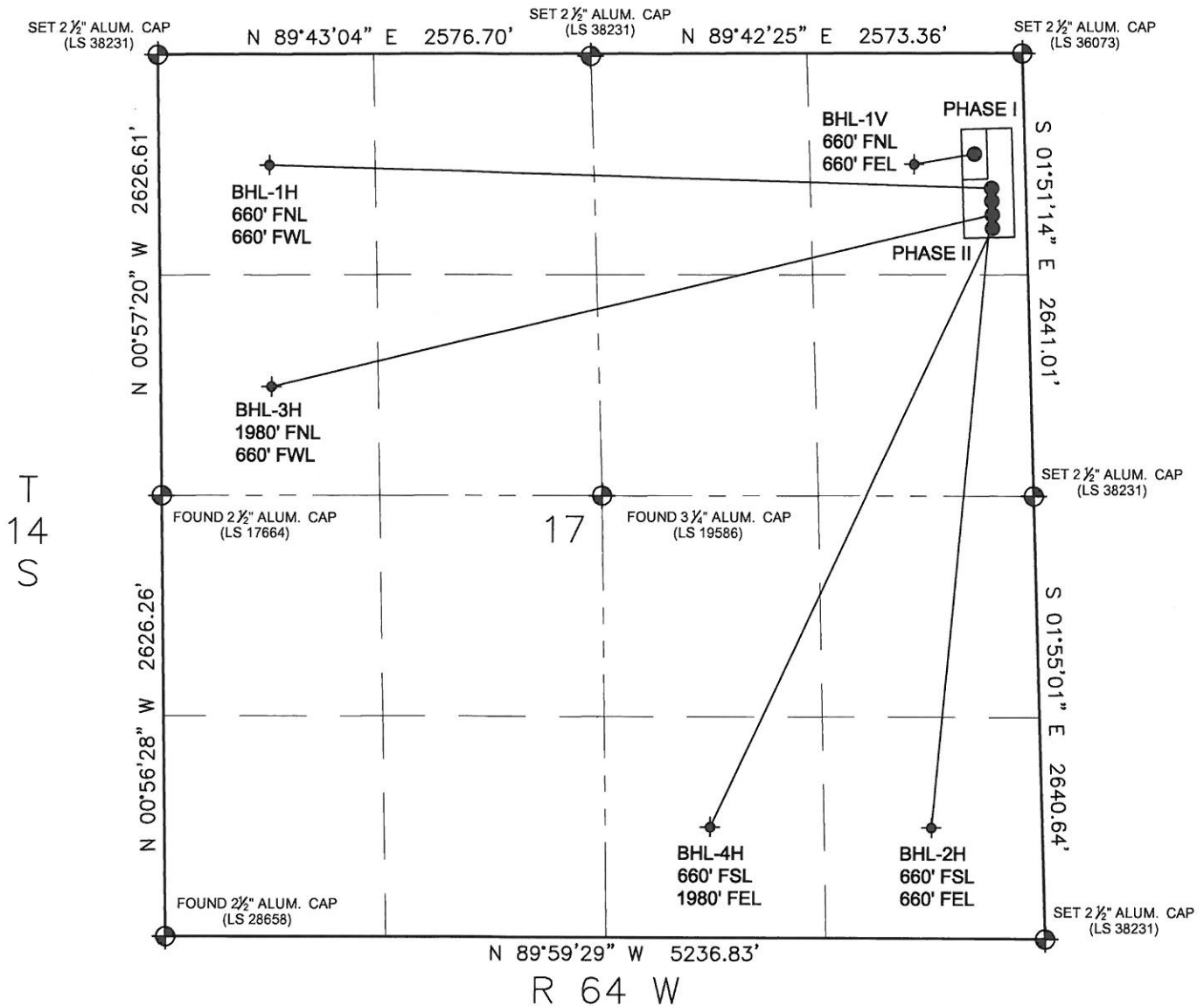


MULTI-WELL PLAN

THIS MAP DOES NOT REPRESENT A BOUNDARY SURVEY



NOTES:

PONDEROSA 41-17 1V TO BE 600' FNL & 300' FEL
BOTTOM HOLE TO BE 660' FNL & 660' FEL

PONDEROSA 41-17 1H TO BE 898' FNL & 225' FEL
BOTTOM HOLE TO BE 660' FNL & 660' FWL

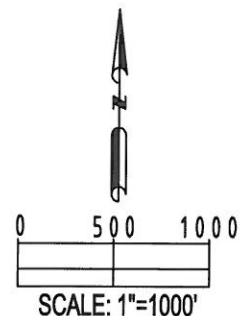
PONDEROSA 41-17 2H TO BE 873' FNL & 225' FEL
BOTTOM HOLE TO BE 660' FSL & 660' FEL

PONDEROSA 41-17 3H TO BE 923' FNL & 225' FEL
BOTTOM HOLE TO BE 1980' FNL & 660' FWL

PONDEROSA 41-17 4H TO BE 948' FNL & 225' FEL
BOTTOM HOLE TO BE 660' FSL & 1980' FEL

LEGEND

- = FOUND MONUMENT
- = PROPOSED WELL
- ◆ = BOTTOM HOLE
- ◆ = EXISTING WELL



MULTI-WELL PLAN FOR
ULTRA RESOURCES INC.
PONDEROSA 41-17
NE 1/4 NE 1/4, SEC. 17, T14S, R64W, 6TH P.M.
EL PASO COUNTY, COLORADO