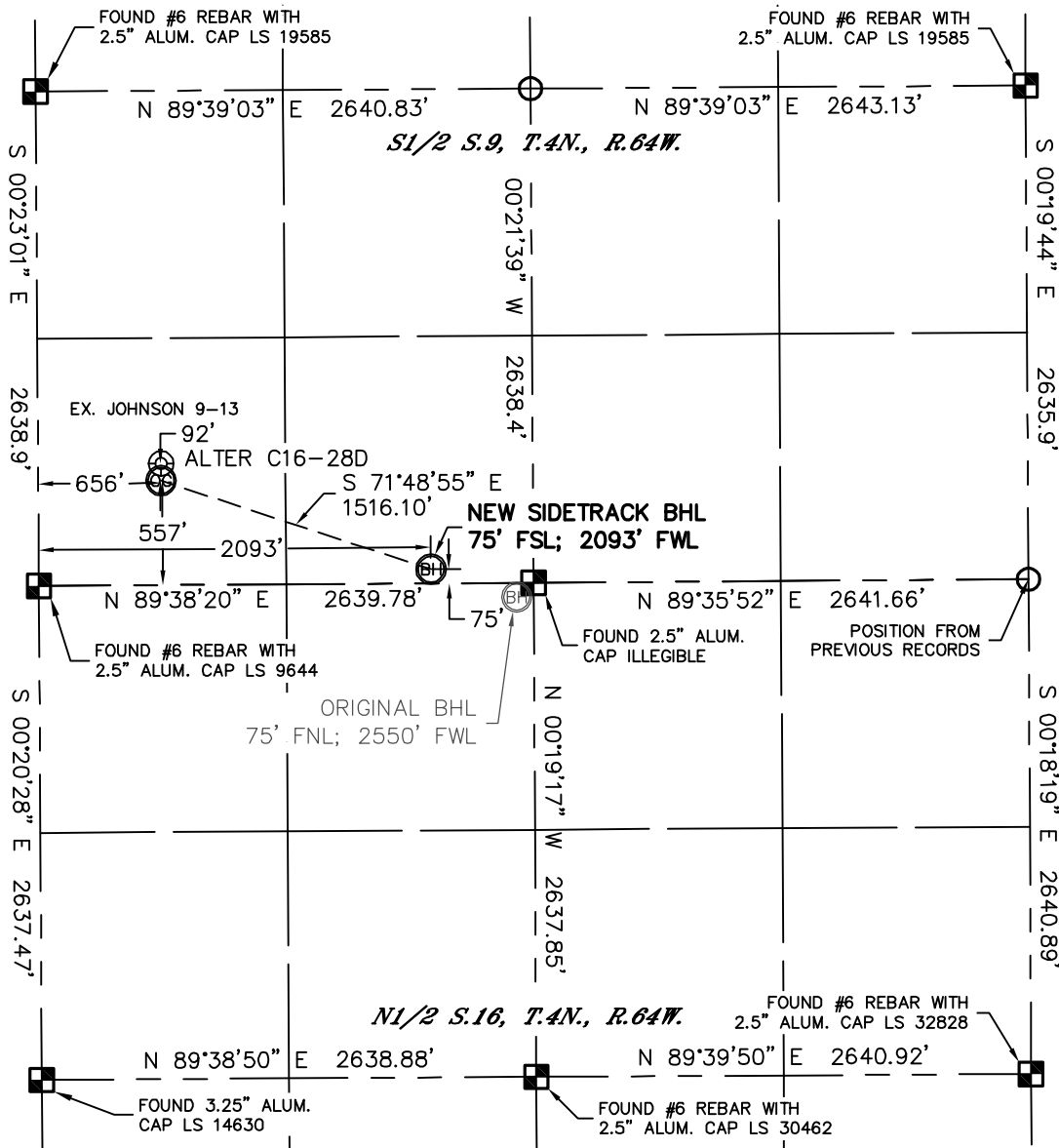


WELL LOCATION CERTIFICATE

THIS MAP DOES NOT REPRESENT A BOUNDARY SURVEY

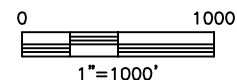
SECTION: 9
TOWNSHIP: 4N
RANGE: 64W



In accordance with a request from Matt Verbit with Noble Energy Inc. Lat40°, Inc. has determined the surface location of the ALTER C16-28D to be 557' from the SOUTH line and 656' from the WEST line and the SIDETRACK bottom hole to be 75' from the SOUTH line and 2093' from the WEST line as measured at right angles from the section lines of Section 9, Township 4 North, Range 64 West of the Sixth Principal Meridian, County of Weld, State of Colorado.

I hereby state that this Well Location Certificate was prepared by me, or under my direct supervision, that the fieldwork was completed on 5/18/11, for and on behalf of Noble Energy Inc. That this is not a Land Survey Plat or an Improvement Survey Plat, and that it is not to be relied upon for establishment of fence, building, or other future improvement lines.

<u>SURFACE LOCATION</u>	<u>ORIGINAL BOTTOM HOLE</u>	<u>SIDETRACK BOTTOM HOLE</u>
LAT: 40.32119°N	LAT: 40.31944°N	LAT: 40.31985°N
LONG: 104.56270°W	LONG: 104.55592°W	LONG: 104.55755°W
PDOP: 1.2		
ELEV: 4700'		
1/4,1/4: SW1/4SW1/4		
NEAREST PROPERTY LINE: 254' SW		



NOTE:

- 1) Bearings shown are Grid Bearings of the Colorado State Plane Coordinate System, North Zone, North American Datum 1983/2007. The lined dimensions as contained herein are based upon the "U.S. Survey Foot."
- 2) Ground elevations are based on an observed GPS elevation (NAVD 1988 DATUM).
- 3) NEAREST EXISTING WELL: JOHNSON 9-13 92'
- 4) IMPROVEMENTS: See LOCATION DRAWING for all visible improvements within 400' of disturbed area.
- 5) SURFACE USE: CROP FIELD
- 6) INSTRUMENT OPERATOR: KYLE RUTZ

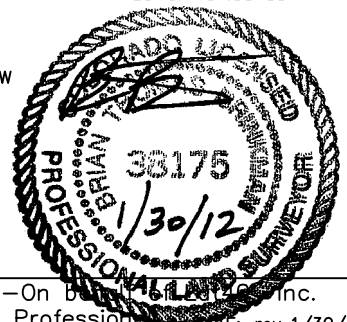
NOTE

According to Colorado law, you must commence any legal action based upon any defect in this W.L.C. within three years after you discover such defect. In no event, may any action based upon any defect in this survey be commenced more than ten years after the date of the certificate shown hereon. (13-80-105 C.R.S.)

LEGEND

- = ALIQUOT MONUMENT AS DESCRIBED
- = CALCULATED POSITION

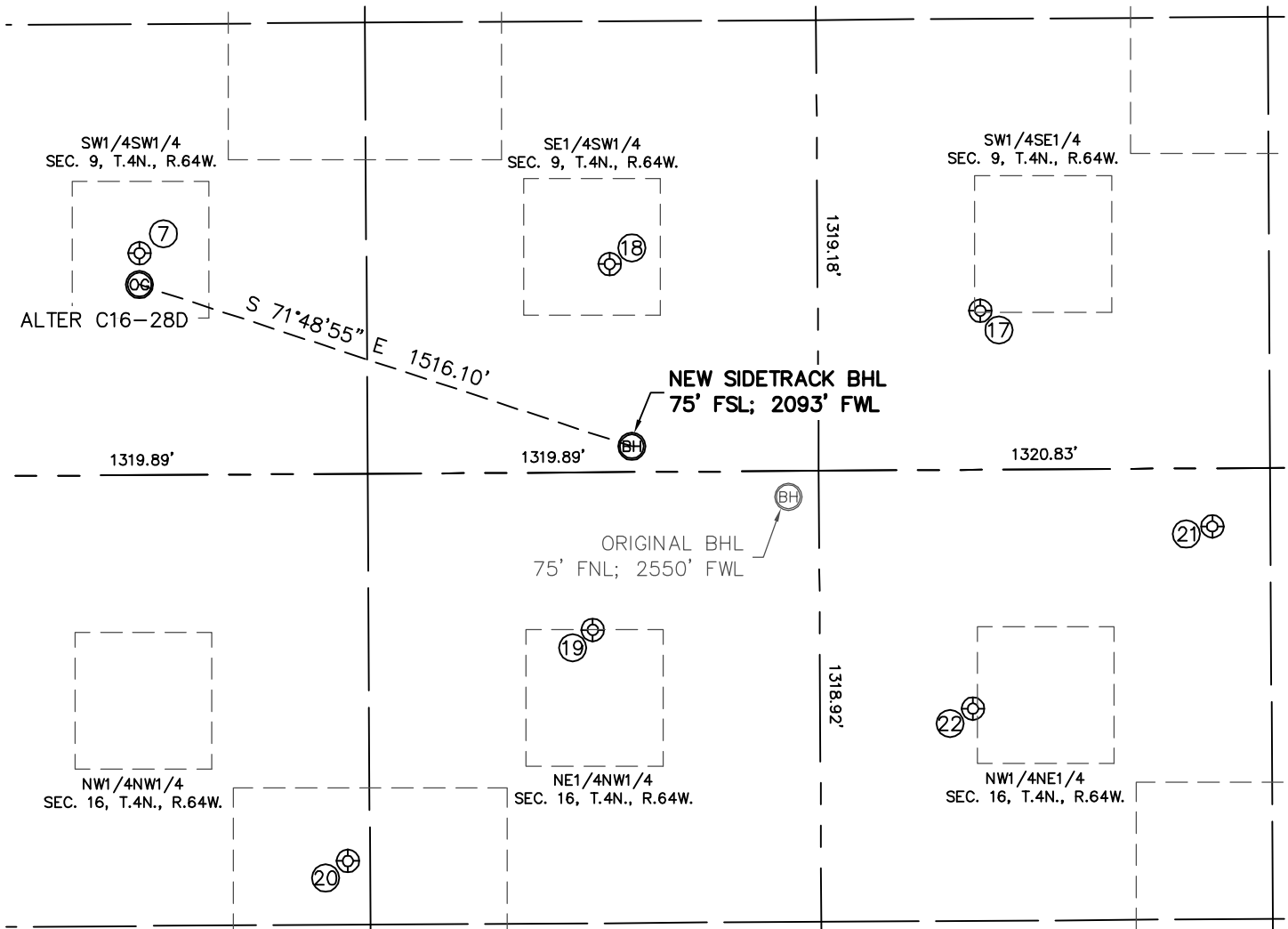
Brian T. Brinkman—On behalf of Lat40°, Inc.
Colorado Licensed Professional Surveyor
Land Surveyor No. 38175
DATE: rev 1/30/2012
PROJECT#: 2011011



SITE SKETCH

ALTER C16-28D

SECTION: 9
TOWNSHIP: 4N
RANGE: 64W



⑦

JOHNSON 9-13
SW1/4SW1/4
649' FSL
657' FWL
LAT-40.32145°N
LONG-104.56269°W
PDOP: 1.9
ELEV: 4701'

⑪

ALTER C9-15
SW1/4SE1/4
465' FSL
2167' FEL
LAT-40.32091°N
LONG-104.55388°W
PDOP: 2.5
ELEV: 4673'

⑫

JOHNSON, VERN 1-A
SE1/4SW1/4
609' FSL
2032' FWL
LAT-40.32132°N
LONG-104.55776°W
PDOP: 1.3
ELEV: 4685'

⑬

STATE 16-314
NE1/4NW1/4
461' FNL
1976' FWL
LAT-40.31839°N
LONG-104.55798°W
PDOP: 2.0
ELEV: 4681'

⑭

STATE 16-414
NW1/4NW1/4
1132' FNL
1255' FWL
LAT-40.31655°N
LONG-104.56058°W
PDOP: 2.0
ELEV: 4689'

⑮

RYAN STATE C16-27
NW1/4NE1/4
170' FNL
1491' FEL
LAT-40.31916°N
LONG-104.55147°W
PDOP: 1.4
ELEV: 4664'

⑯

STATE 16-214
NW1/4NE1/4
698' FNL
2195' FEL
LAT-40.31772°N
LONG-104.55400°W
PDOP: 1.5
ELEV: 4670'

