

Encana OIL & GAS (USA) INC.

Well location, ALBERTSON DHS1C-15 G15 7101 (SURFACE LOCATION), located as shown in Tract 40 of Section 15, T7S, R101W, 6th P.M., Garfield County, Colorado.

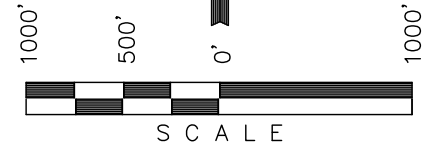
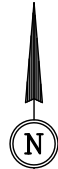
VERTICAL CONTROL DATUM: NAVD88

[Derived from: N.G.S. O.P.U.S. Solution]

LINE TABLE		
LINE	BEARING	LENGTH
L1	N88°30'00"E	712.64'

Sheet 1a of 11

NOTE:
SEE SHEET 7A FOR EXISTING
IMPROVEMENTS WITHIN 400'
OF THE PROPOSED WELL
DISTURBANCE.



CERTIFICATE

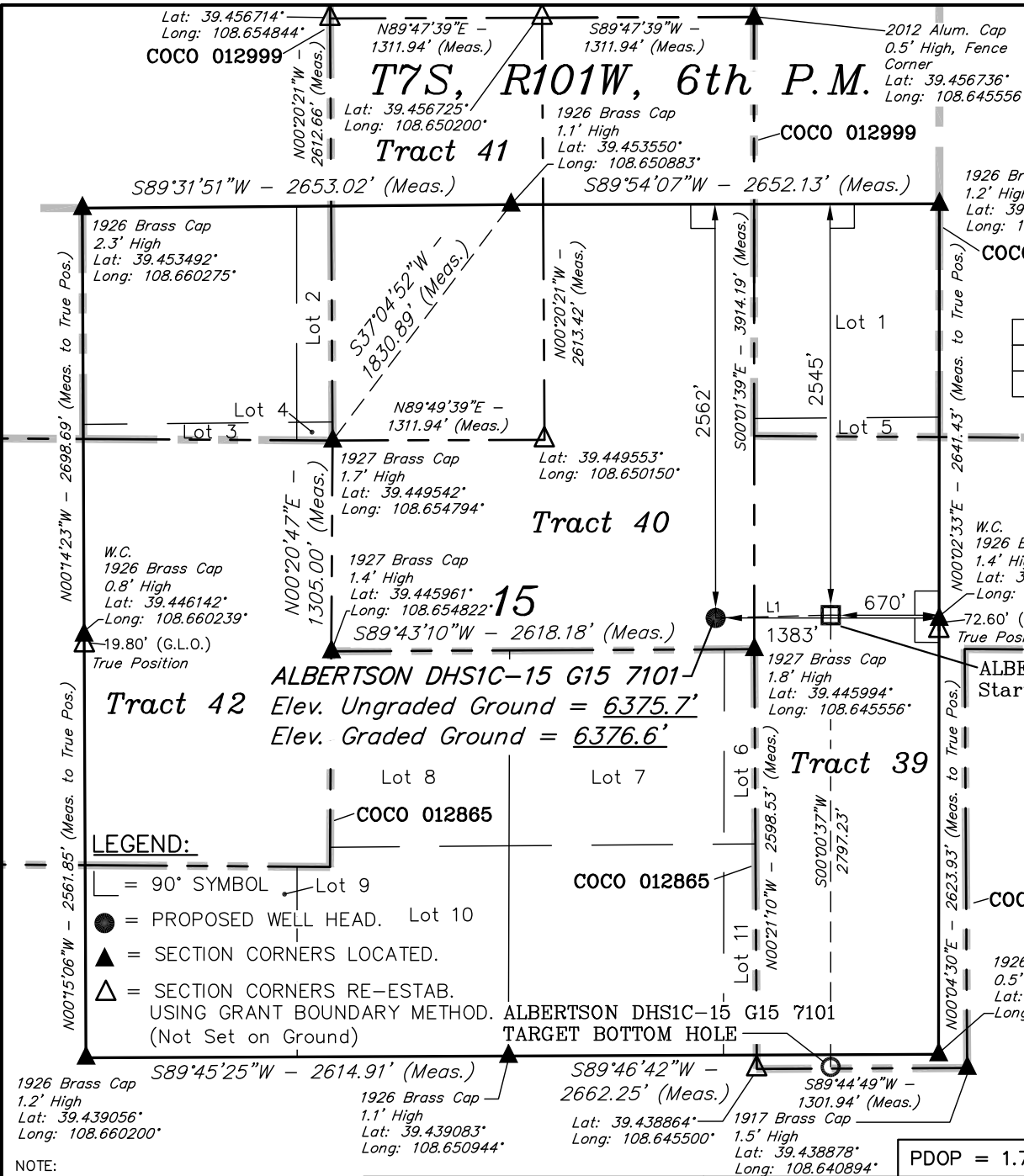
THIS IS TO CERTIFY THAT THE ABOVE PLAT WAS PREPARED AND LOCATION AS SHOWN WAS STAKED ON THE GROUND FROM FIELD NOTES OF ACTUAL SURVEYS MADE BY ME OR UNDER MY SUPERVISION AND THAT THE SAME ARE TRUE AND CORRECT TO THE BEST OF MY KNOWLEDGE AND BELIEF.

Revised: 01-26-12 D.R.B.

REGISTERED LAND SURVEYOR
REGISTRATION NO. 17492
STATE OF COLORADO
09-24-2012

UINTAH ENGINEERING & LAND SURVEYING
85 SOUTH 200 EAST - VERNAL, UTAH 84078
(435) 789-1017

SCALE 1" = 1000'	DATE SURVEYED: 12-19-11	DATE DRAWN: 01-25-12
PARTY B.J. T.M. D.R.B.	REFERENCES G.L.O. PLAT	
WEATHER COLD	FILE Encana OIL & GAS (USA) INC.	



NAD 83 (START OF PRODUCING INTERVAL)	NAD 83 (SURFACE LOCATION)
LATITUDE = 39°26'47.66" (39.446572)	LATITUDE = 39°26'47.49" (39.446525)
LONGITUDE = 108°38'37.96" (108.643878)	LONGITUDE = 108°38'47.04" (108.646400)
NAD 27 (START OF PRODUCING INTERVAL)	NAD 27 (SURFACE LOCATION)
LATITUDE = 39°26'47.74" (39.446594)	LATITUDE = 39°26'47.57" (39.446547)
LONGITUDE = 108°38'35.61" (108.643225)	LONGITUDE = 108°38'44.69" (108.645747)

T7S, R101W, 6th P.M.

Tract Cor. 40 AP6
1927 Brass Cap
1.8' High
Lat: 39.445994°
Long: 108.645556°

Tract 39

Encana OIL & GAS (USA) INC.

Well location, ALBERTSON DHS1C-15 G15 7101 (TARGET BOTTOM HOLE), located as shown in Tract 39 of Section 22, T7S, R101W, 6th P.M., Garfield County, Colorado.

COCO 012668A

VERTICAL CONTROL DATUM: NAVD88

[Derived from: N.G.S. O.P.U.S. Solution]

N00°18'10"E - 2575.33' (Meas.)

1926 Brass Cap
1.2' High
Lat: 39.439056°
Long: 108.660200°

S89°45'25"W - 2614.91' (Meas.)

ALBERTSON DHS1C-15 G15 7101
TARGET BOTTOM HOLE

S89°46'42"W - 2662.25' (Meas.)

Lat: 39.438864°
Long: 108.645500°

1926 Brass Cap
0.5' High, "T" Post
Lat: 39.439111°
Long: 108.641522°

269°54' (G.L.O.)

1917 Brass Cap
1.5' High
Lat: 39.438878°
Long: 108.640894°

COCO 012668

Lot 1

COCO 012865

NOTE:
THE PROPERTY LINE IS LOCATED SOUTH 10' FROM THE TARGET BOTTOM HOLE.

THE PROPOSED BOTTOM HOLE BEARS S83°17'42"W 671.89' FROM THE NORTHEAST CORNER OF SECTION 22, T7S, R101W, 6th P.M.

NOTE:
THE START OF PRODUCING INTERVAL FOR THIS WELL IS LOCATED IN THE SE 1/4 NE 1/4 (TRACT 39) OF SECTION 15, T7S, R101W, 6th P.M. AT A DISTANCE OF 2545' FNL 670' FEL. IT BEARS N00°00'37"E 2797.23' FROM THE TARGET BOTTOM HOLE.

1926 Brass Cap
2.1' High
Lat: 39.431989°
Long: 108.660250°

22

COCO 012865

N89°58'W - 5281.32' (G.L.O.)

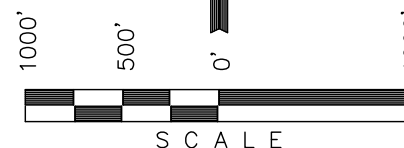
2640.00' (G.L.O.)

2640.00' (G.L.O.)

N00°01'W - 2640.00' (G.L.O.)



Sheet 1b of 11



CERTIFICATE

THIS IS TO CERTIFY THAT THE ABOVE PLAT WAS PREPARED AND LOCATION AS SHOWN WAS STAKED ON THE GROUND FROM FIELD NOTES OF ACTUAL SURVEYS MADE BY ME OR UNDER MY SUPERVISION AND THAT THE SAME ARE TRUE AND CORRECT TO THE BEST OF MY KNOWLEDGE AND BELIEF.

REGISTERED LAND SURVEYOR
REGISTRATION NO. 17492
STATE OF COLORADO

Revised: 01-26-12 D.R.B.

UINTAH ENGINEERING & LAND SURVEYING
85 SOUTH 200 EAST - VERNAL, UTAH 84078
(435) 789-1017

LEGEND: L = 90° SYMBOL

● = PROPOSED WELL HEAD.

▲ = SECTION CORNERS LOCATED.

△ = SECTION CORNERS RE-ESTAB.
USING GRANT BOUNDARY METHOD.
(Not Set on Ground)

NAD 83 (TARGET BOTTOM HOLE)

LATITUDE = 39°26'20.02" (39.438894)
LONGITUDE = 108°38'37.98" (108.643883)

NAD 27 (TARGET BOTTOM HOLE)

LATITUDE = 39°26'20.11" (39.438919)
LONGITUDE = 108°38'35.63" (108.643231)

SCALE 1" = 1000'	DATE SURVEYED: 12-19-11	DATE DRAWN: 01-25-12
PARTY B.J. T.M. D.R.B.	REFERENCES G.L.O. PLAT	
WEATHER COLD	FILE Encana OIL & GAS (USA) INC.	