



Andrews, David

From: Andrews, David
Sent: Saturday, January 28, 2012 10:25 AM
To: 'Huycke, John'
Cc: Burn, Diana; Sprouse, Randy; Bell, Duaine; Cocciolone, Ashley; DePorter, Travis; Ellsworth, Stuart; Stanczyk, Jane; Freeman, Sarah; Hollinshead, Ryan
Subject: RE: Anadarko Camp Pad Changes
Attachments: Camp Section 26 Pad.pdf

RE: API No. 05-123-34958

John,

This confirms my verbal approval to proceed with Plugging and Abandoning the Camp 38N-26HZ well, as discussed on the phone, and as described below. Ordinarily, I would ask for a Form 6 (Notice of Intent to Abandon) on Monday to formalize approval of the intent, but please check with Diana on Monday to see if she still wants one, in addition to this email approval. Of course, a Form 6 (Subsequent Report of Abandonment), with as-drilled GPS data and cement tickets, will be required for the Camp 38N-26HZ well.

Considering that you will be skidding to a pre-permitted location with no SHL change, we don't have to worry about a rush permit approval for the next well. However, as discussed in your email below, Anadarko will need to follow up with COGCC Wattenberg engineering staff (Diana or Ryan Hollinshead) and COGCC permitting staff (Sarah Freeman) to submit Sundry Notices and revised, planned directional surveys for any other wells to be drilled next week with SHL changes.

Thanks,

David D. Andrews, P.E., P.G.
Engineering Supervisor - Western Colorado

State of Colorado
Oil and Gas Conservation Commission
707 Wapiti Court, Suite 204
Rifle, Colorado 81650
Office Phone: (970) 625-2497 Ext. 1
Cell Phone: (970) 456-5262
Fax: (970) 625-5682
E-mail: David.Andrews@state.co.us
Website: <http://www.colorado.gov/cogcc>

CC: COGCC Well File, API No. 05-123-34958

From: Huycke, John [<mailto:John.Huycke@anadarko.com>]
Sent: Saturday, January 28, 2012 10:04 AM
To: Andrews, David
Cc: Burn, Diana; Sprouse, Randy; Bell, Duaine; Cocciolone, Ashley; DePorter, Travis
Subject: FW: Anadarko Camp Pad Changes

David,

This a description of our phone conversation at 9:58 am, Saturday, January 28, 2012. You have given us verbal approval to plug the Camp 38N-26HZ and to continue operations on the permitted wells that do not have SL changes.

We will plug the Camp 38N-26HZ well as we discussed.

After the plugging, we will move to the Camp 37N-26HZ and Camp 36N-26HZ, the two permitted wells that will not have changes to the SL.

I will pursue the changes for the two wells with new SL's with Diana Burn on Monday.

John Huycke
720-236-2766

From: Huycke, John
Sent: Saturday, January 28, 2012 9:23 AM
To: 'diana.burn@state.co.us'
Cc: Sprouse, Randy; Bell, Duaine; Cocciolone, Ashley; DePorter, Travis
Subject: Anadarko Camp Pad Changes

Diana,

We are currently pre-setting surface casing on the five well Camp pad in T3N R66W Section 26. One well has surface casing set, the Camp 38C-26HZ well.

We are on the second well on the pad, the Camp 38N-26HZ, and drilled the 12-1/4" surface hole to 937'. The 9-5/8" casing was run to 640' and became stuck. Attempts to free the casing have been fruitless. I need permission to plug the Camp 38N-26HZ. We will do a primary cement job to circulate cement between the casing and open hole from 640' to the surface and will use the cement slurry planned for the primary cement job. Then a surface cement plug will be set according to state rules. This will be done now. Prior to leaving location, the stub will be cut off.

The attached PDF shows the layout on this pad. Because the Camp 38N-26HZ has been junked, the pad layout will change. The well pattern was originally designed as a W pattern. The two bottom wells, the Camp 38N-26HZ and the Camp 15N-26HZ will be moved north of the other three wells so that the production rig will be able to skid to all the wells. This will make the wells form an M pattern. I need permission to make these changes. I will follow up with plat information showing the new SL's of the Camp 38N-26HZ and the Camp 15N-26HZ along with the revised directional plans for the wells next week.

John Huycke
Engr Mgr
720-236-2766

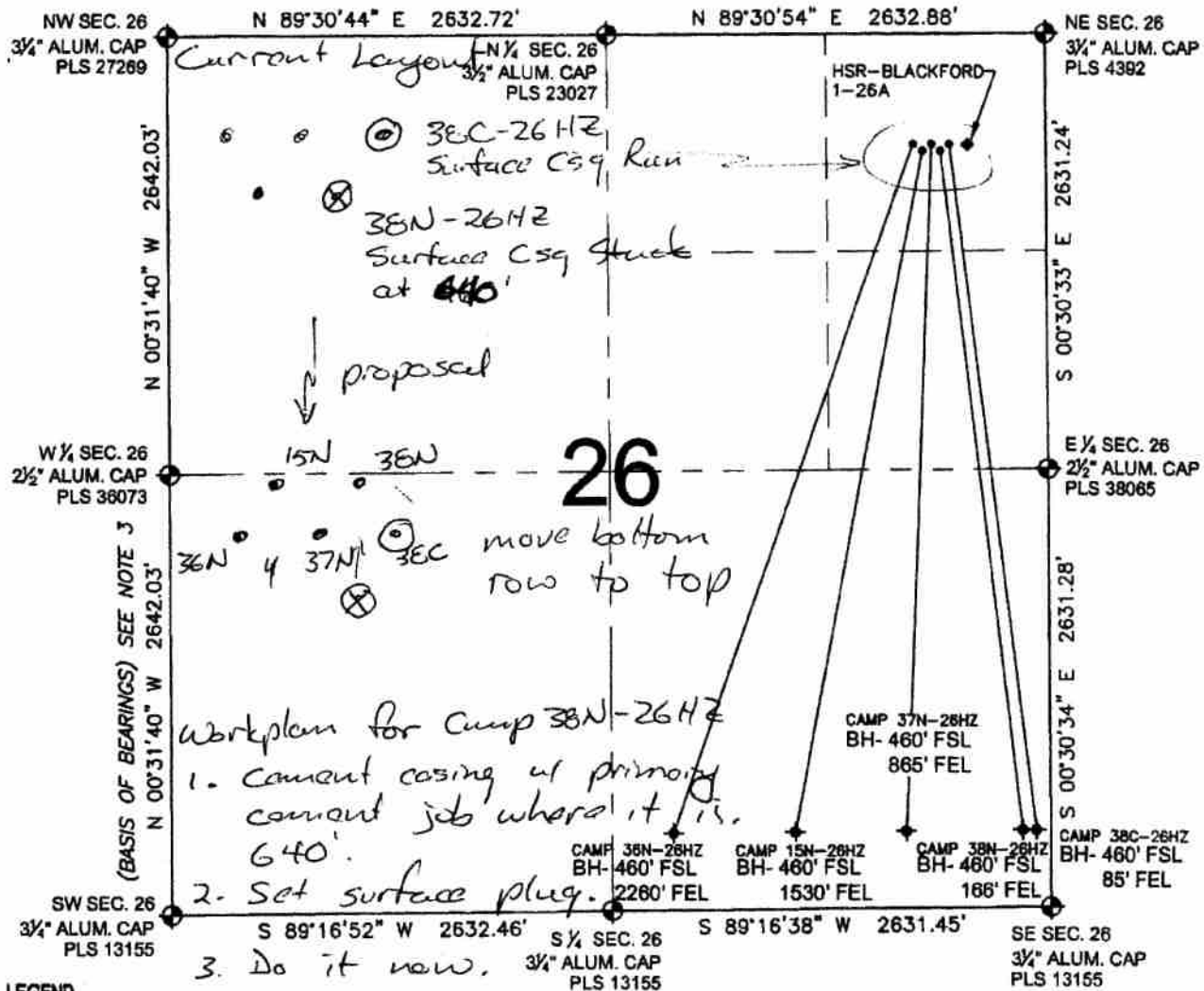
From: Colleen Huycke [<mailto:chuycke@yahoo.com>]
Sent: Saturday, January 28, 2012 8:57 AM
To: Huycke, John
Subject: Camp Pad Changes

Anadarko Confidentiality Notice: This electronic transmission and any attached documents or other writings are intended only for the person or entity to which it is addressed and may contain information that is privileged, confidential or otherwise protected from disclosure. If you have received this communication in error, please immediately notify sender by return e-mail and destroy the communication. Any disclosure, copying, distribution or the taking of any action concerning the contents

of this communication or any attachments by anyone other than the named recipient is strictly prohibited.

PAD DRAWING: CAMP 5 PAD

SECTION 26, TOWNSHIP 3 NORTH, RANGE 66 WEST, 6TH P.M.



LEGEND

- = EXISTING MONUMENT ♦ = BOTTOM HOLE BH= BOTTOM HOLE
 ○ = PROPOSED WELL ◆ = EXISTING WELL

NOTES:

- THIS FIELD SURVEY CONFORMS TO THE MINIMUM STANDARDS SET BY THE C.O.G.C.C., RULE NO. 215
- HORIZONTAL POSITIONS AND ORTHOMETRIC ELEVATIONS SHOWN AT THE WELL HEAD, ARE BASED ON GPS-RTK POSITIONS DERIVED FROM MINIMUM 2-HOUR STATIC OBSERVATIONS CORRECTED BY THE NATIONAL GEODETIC SURVEY ONLINE POSITIONING USER SERVICE, O.P.U.S. DATUM: HORIZONTAL = NAD83/2007, VERTICAL = NAVD88
- THE BASIS OF BEARINGS ARE STATE PLANE COORDINATE SYSTEM GRID BEARINGS SHOWN HEREON BETWEEN THE DESCRIBED THE MONUMENTS SHOWN HEREON.
- GRID DISTANCES ARE SHOWN, AS MEASURED IN THE FIELD, WITH TIES TO WELLS MEASURED PERPENDICULAR TO SECTION LINES.

NOTES:

- CAMP 38C-26HZ TO BE AT 667' FNL, 658' FEL.
 BOTTOM HOLE AT 460' FSL & 85' FEL.
 CAMP 38N-26HZ TO BE AT 677' FNL, 677' FEL.
 BOTTOM HOLE AT 460' FSL & 186' FEL.
 CAMP 37N-26HZ TO BE AT 667' FNL, 866' FEL.
 BOTTOM HOLE AT 460' FSL & 865' FEL.
 CAMP 15N-26HZ TO BE AT 677' FNL, 715' FEL.
 BOTTOM HOLE AT 460' FSL & 1530' FEL.
 CAMP 36N-26HZ TO BE AT 667' FNL, 733' FEL.
 BOTTOM HOLE AT 460' FSL & 2260' FEL.
 HSR-BLACKFORD 1-26A TO BE AT 667' FNL, 811' FEL.

PREPARED BY:

PFS

Petroleum Field Services, LLC
1801 W. 13th Ave.
Denver, CO 80204

KERR-MCGEE OIL & GAS ONSHORE LP

FIELD DATE:

11-11-11

PAD NAME:

CAMP 5 PAD

DRAWING DATE:

11-16-11

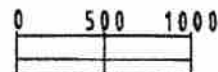
SURFACE LOCATION:

BY:

SMF

WELD COUNTY, COLORADO

NE 1/4 NE 1/4, SEC. 26, T3N, R66W, 6TH P.M.



SCALE: 1"=1000'