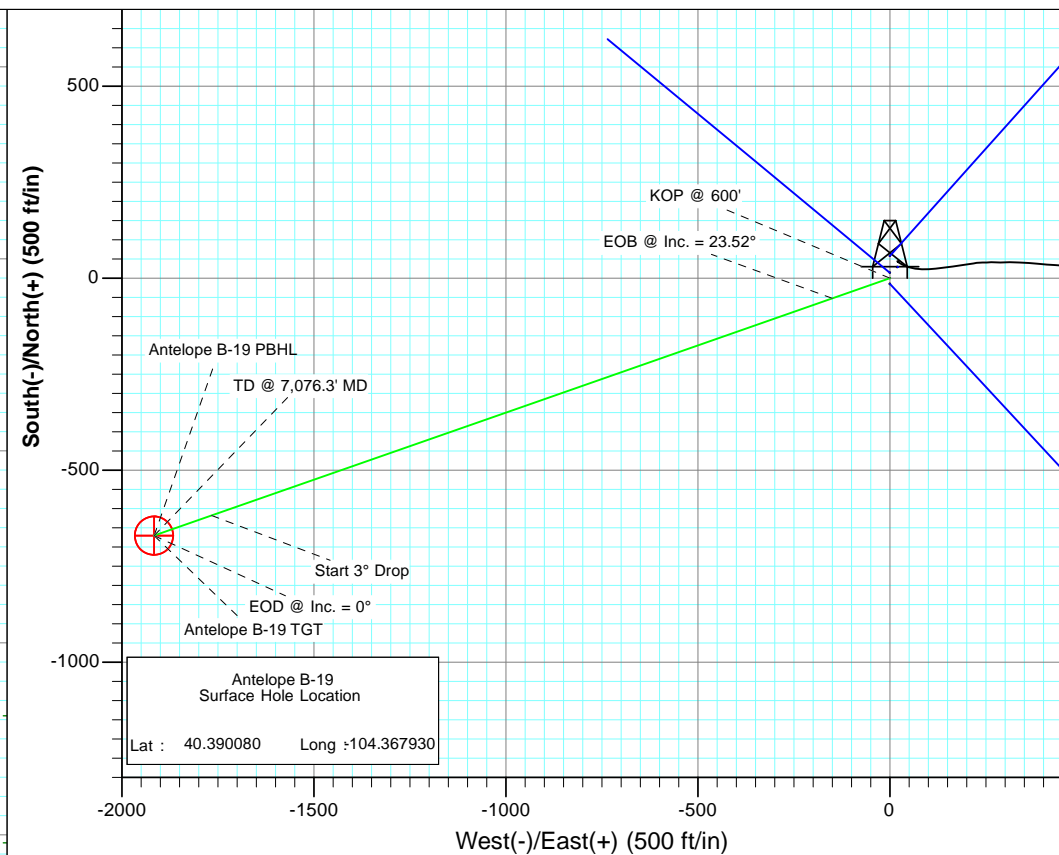
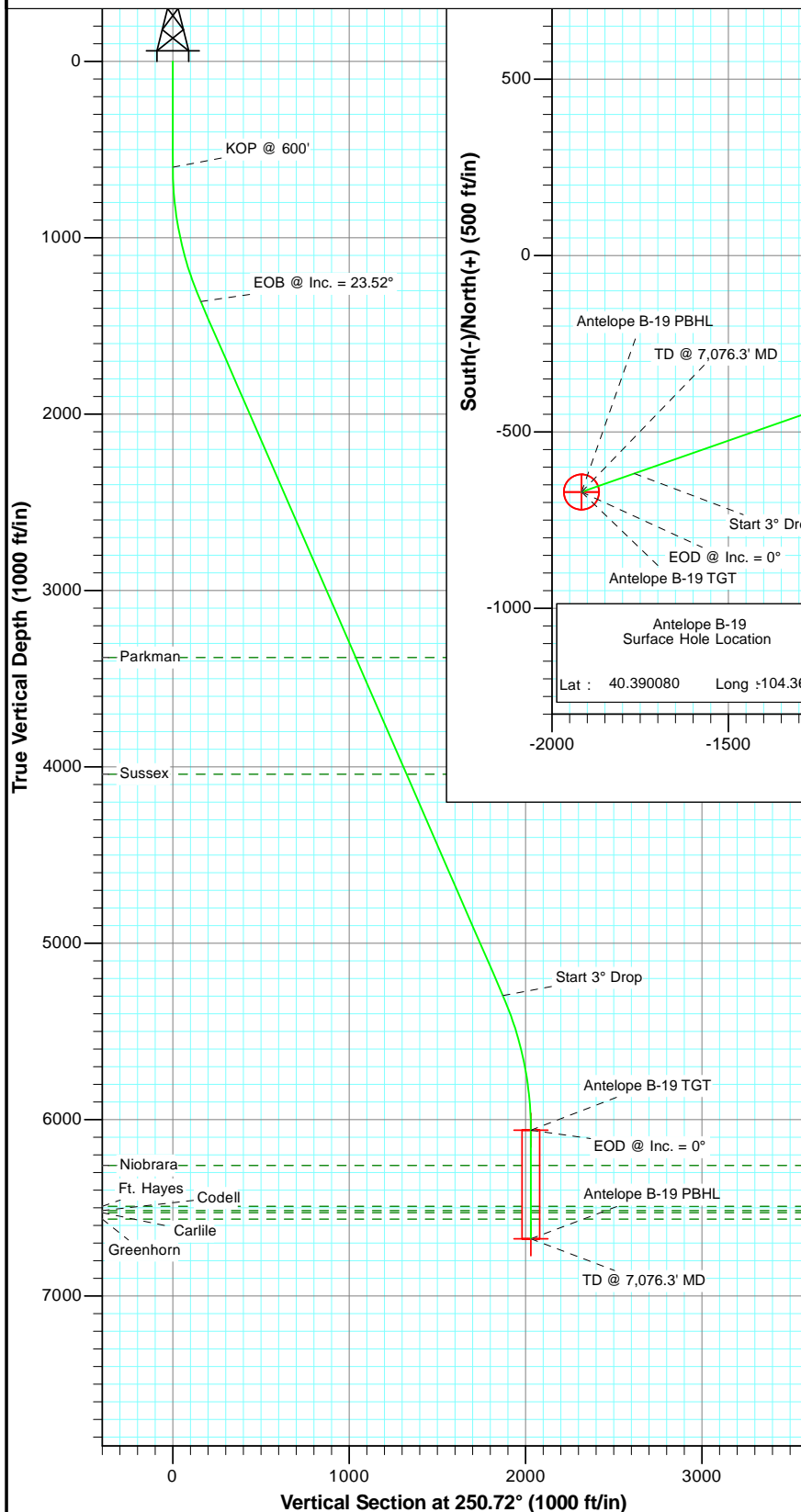


SECTION DETAILS

Sec	MD	Inc	Azi	TVD	+N/-S	+E/-W	Dleg	TFace	VSect	Target
1	0.0	0.00	0.00	0.0	0.0	0.0	0.00	0.00	0.0	
2	600.0	0.00	0.00	600.0	0.0	0.0	0.00	0.00	0.0	
3	1384.0	23.52	250.72	1362.2	-52.4	-149.8	3.00	250.72	158.7	
4	5676.3	23.52	250.72	5297.8	-617.8	-1766.7	0.00	0.00	1871.6	Antelope B-19 TGT
5	6460.3	0.00	0.00	6060.0	-670.2	-1916.5	3.00	180.00	2030.3	Antelope B-19 PBHL
6	7076.3	0.00	0.00	6676.0	-670.2	-1916.5	0.00	0.00	2030.3	



FORMATION TOP DETAILS

TVDPath	MDPath	Formation
3380.0	3584.7	Parkman
4042.0	4306.7	Sussex
6260.0	6660.3	Niobrara
6492.0	6892.3	Ft. Hayes
6516.0	6916.3	Codell
6528.0	6928.3	Carlile
6564.0	6964.3	Greenhorn



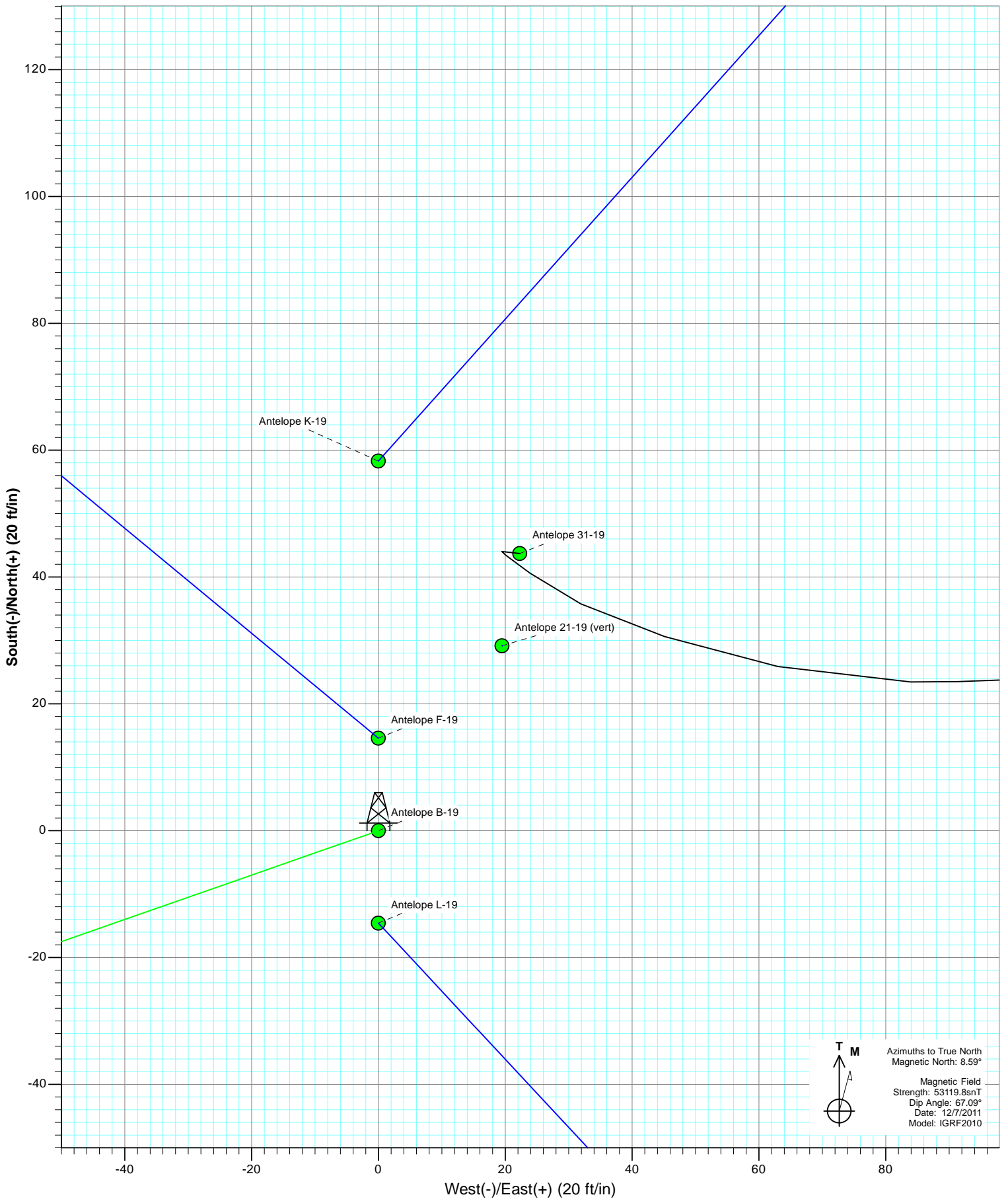
Azimuths to True North
Magnetic North: 8.59°

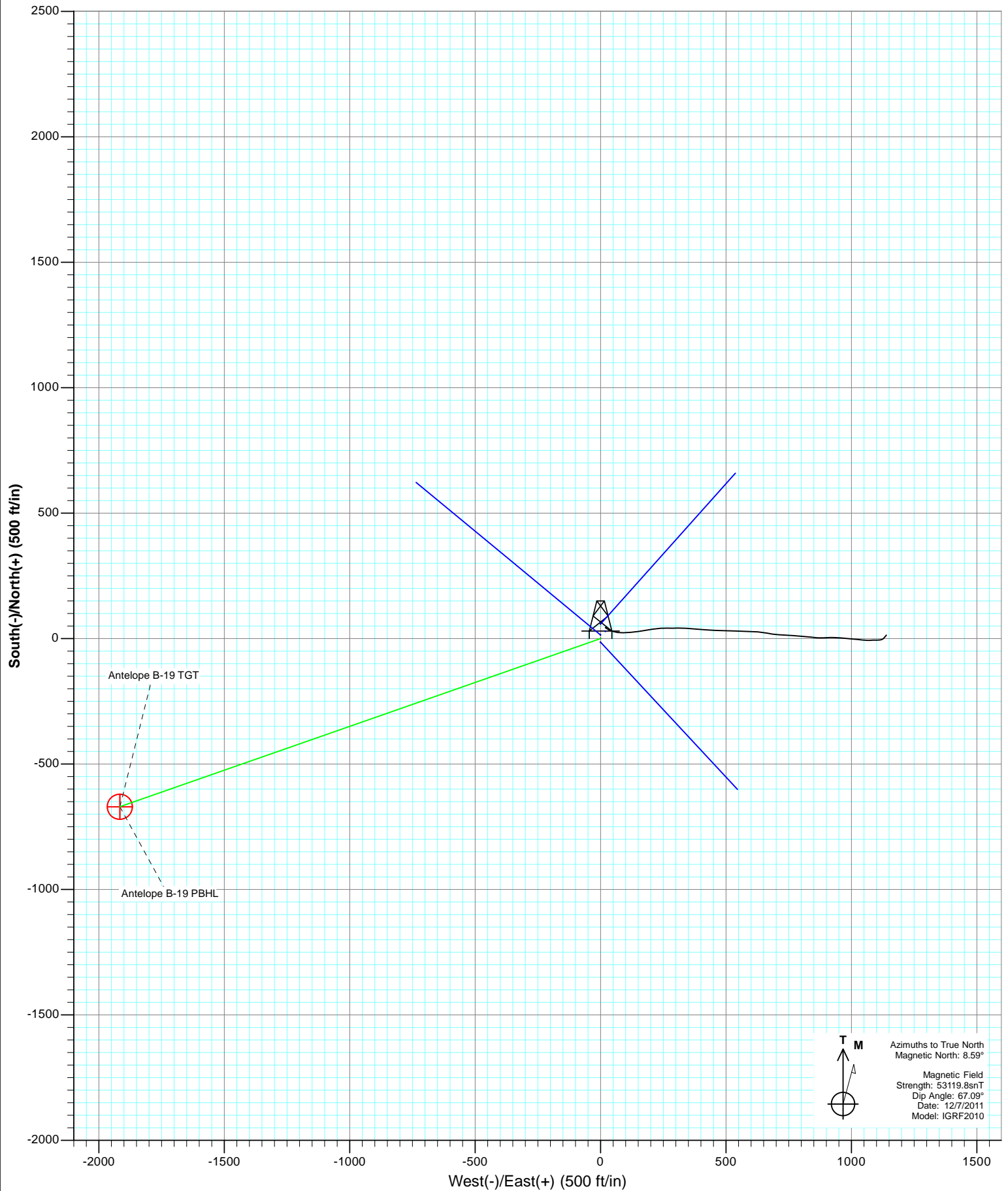
Magnetic Field
Strength: 53119.8nT
Dip Angle: 67.09°
Date: 12/7/2011
Model: IGRF2010

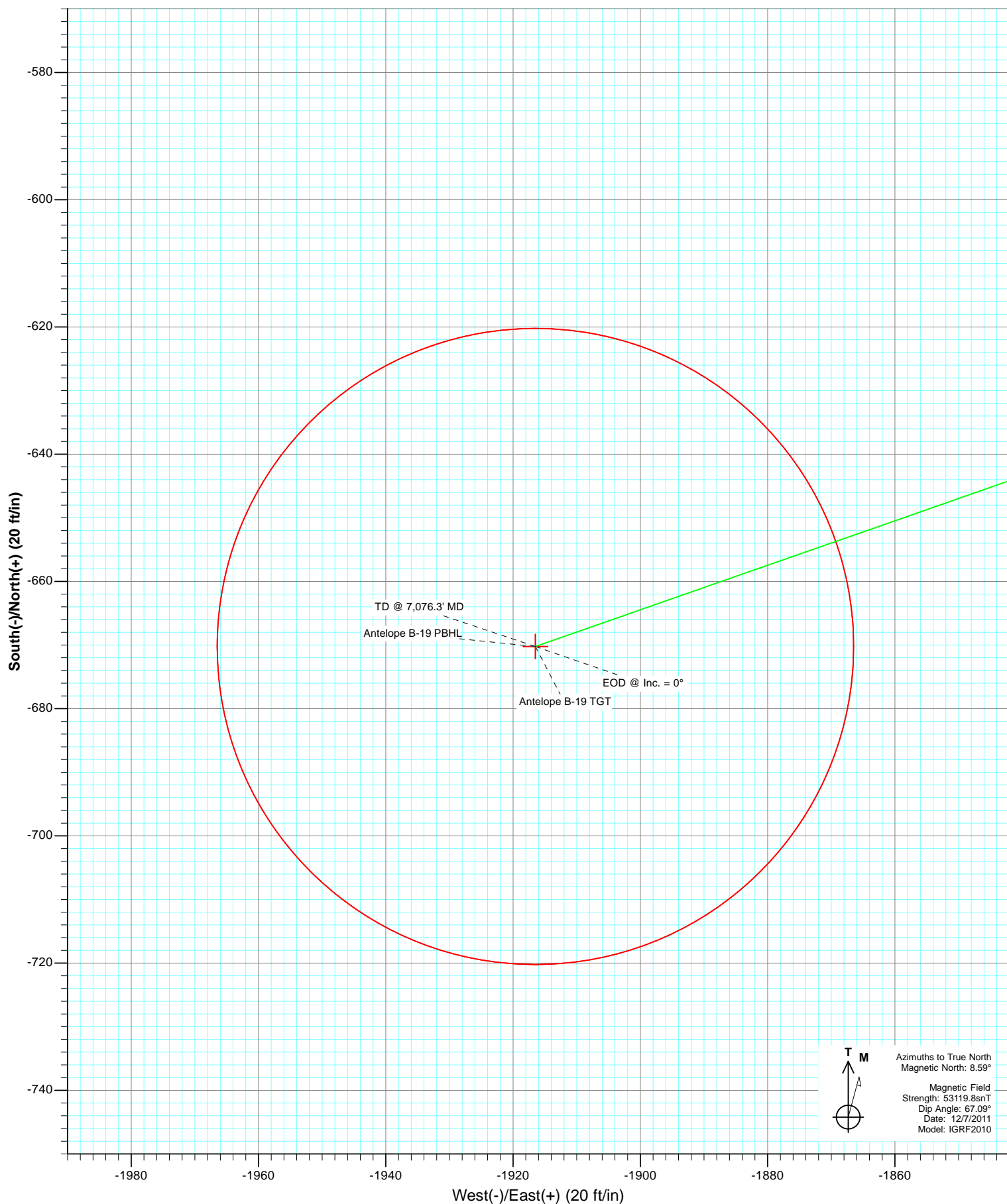
Plan #1
Antelope B-19
125XXX; SC

KBE @ 4610.0ft (Original Well Elev)
North American Datum 1983
Well Antelope B-19, True North

Type	Target	Azimuth	Origin	Type	N/S	E/W	From	TVD
TD	No Target (Freehand)	250.72		Slot	0.0	0.0		0.0
Name		TVD	+N/-S	+E/-W			Latitude	Longitude
Antelope B-19 TGT		6060.0	-670.2	-1916.5			40.388240	-104.374810
Antelope B-19 PBHL		6676.0	-670.2	-1916.5			40.388240	-104.374810







Cathedral Energy Services

Planning Report

Database:	USA EDM 5000 Multi Users DB	Local Co-ordinate Reference:	Well Antelope B-19
Company:	Bonanza Creek Energy Operating Company, LLC	TVD Reference:	KBE @ 4610.0ft (Original Well Elev)
Project:	Weld County	MD Reference:	KBE @ 4610.0ft (Original Well Elev)
Site:	Antelope 21-19 Pad	North Reference:	True
Well:	Antelope B-19	Survey Calculation Method:	Minimum Curvature
Wellbore:	OH		
Design:	Plan #1		

Project	Weld County		
Map System:	US State Plane 1983	System Datum:	Mean Sea Level
Geo Datum:	North American Datum 1983		
Map Zone:	Colorado Northern Zone		

Site		Antelope 21-19 Pad			
Site Position:		Northing:	1,386,991.60 ft	Latitude:	40.390160
From:	Lat/Long	Easting:	3,315,356.54 ft	Longitude:	-104.367860
Position Uncertainty:	0.0 ft	Slot Radius:	13.200 in	Grid Convergence:	0.73 °

Well	Antelope B-19					
Well Position	+N/-S	0.0 ft	Northing:	1,386,962.20 ft	Latitude:	40.390080
	+E/-W	0.0 ft	Easting:	3,315,337.42 ft	Longitude:	-104.367930
Position Uncertainty		0.0 ft	Wellhead Elevation:	ft	Ground Level:	4,600.0 ft

Wellbore	OH				
Magnetics	Model Name	Sample Date	Declination	Dip Angle	Field Strength
			(°)	(°)	(nT)
	IGRF2010	12/7/2011	8.58	67.09	53,120

Design	Plan #1			
Audit Notes:				
Version:	Phase:	PLAN	Tie On Depth:	0.0
Vertical Section:	Depth From (TVD)	+N/-S	+E/-W	Direction
	(ft)	(ft)	(ft)	(°)
	0.0	0.0	0.0	250.72

Plan Sections										
Measured Depth	Inclination	Azimuth	Vertical Depth	+N/-S	+E/-W	Dogleg Rate	Build Rate	Turn Rate	TFO	Target
(ft)	(°)	(°)	(ft)	(ft)	(ft)	(°/100ft)	(°/100ft)	(°/100ft)	(°)	
0.0	0.00	0.00	0.0	0.0	0.0	0.00	0.00	0.00	0.00	
600.0	0.00	0.00	600.0	0.0	0.0	0.00	0.00	0.00	0.00	
1,384.0	23.52	250.72	1,362.2	-52.4	-149.8	3.00	3.00	0.00	250.72	
5,676.3	23.52	250.72	5,297.8	-617.8	-1,766.7	0.00	0.00	0.00	0.00	
6,460.3	0.00	0.00	6,060.0	-670.2	-1,916.5	3.00	-3.00	0.00	180.00	Antelope B-19 TGT
7,076.3	0.00	0.00	6,676.0	-670.2	-1,916.5	0.00	0.00	0.00	0.00	Antelope B-19 PBHL

Cathedral Energy Services

Planning Report

Database:	USA EDM 5000 Multi Users DB	Local Co-ordinate Reference:	Well Antelope B-19
Company:	Bonanza Creek Energy Operating Company, LLC	TVD Reference:	KBE @ 4610.0ft (Original Well Elev)
Project:	Weld County	MD Reference:	KBE @ 4610.0ft (Original Well Elev)
Site:	Antelope 21-19 Pad	North Reference:	True
Well:	Antelope B-19	Survey Calculation Method:	Minimum Curvature
Wellbore:	OH		
Design:	Plan #1		

Planned Survey

Measured Depth (ft)	Inclination (°)	Azimuth (°)	Vertical Depth (ft)	+N/-S (ft)	+E/-W (ft)	Vertical Section (ft)	Dogleg Rate (°/100ft)	Build Rate (°/100ft)	Comments / Formations
0.0	0.00	0.00	0.0	0.0	0.0	0.0	0.00	0.00	
100.0	0.00	0.00	100.0	0.0	0.0	0.0	0.00	0.00	
200.0	0.00	0.00	200.0	0.0	0.0	0.0	0.00	0.00	
300.0	0.00	0.00	300.0	0.0	0.0	0.0	0.00	0.00	
400.0	0.00	0.00	400.0	0.0	0.0	0.0	0.00	0.00	
500.0	0.00	0.00	500.0	0.0	0.0	0.0	0.00	0.00	
600.0	0.00	0.00	600.0	0.0	0.0	0.0	0.00	0.00	KOP @ 600'
700.0	3.00	250.72	700.0	-0.9	-2.5	2.6	3.00	3.00	
800.0	6.00	250.72	799.6	-3.5	-9.9	10.5	3.00	3.00	
900.0	9.00	250.72	898.8	-7.8	-22.2	23.5	3.00	3.00	
1,000.0	12.00	250.72	997.1	-13.8	-39.4	41.7	3.00	3.00	
1,100.0	15.00	250.72	1,094.3	-21.5	-61.4	65.1	3.00	3.00	
1,200.0	18.00	250.72	1,190.2	-30.9	-88.2	93.5	3.00	3.00	
1,300.0	21.00	250.72	1,284.4	-41.9	-119.7	126.9	3.00	3.00	
1,384.0	23.52	250.72	1,362.2	-52.4	-149.8	158.7	3.00	3.00	EOB @ Inc. = 23.52°
1,400.0	23.52	250.72	1,376.8	-54.5	-155.8	165.1	0.00	0.00	
1,500.0	23.52	250.72	1,468.5	-67.7	-193.5	205.0	0.00	0.00	
1,600.0	23.52	250.72	1,560.2	-80.8	-231.1	244.9	0.00	0.00	
1,700.0	23.52	250.72	1,651.9	-94.0	-268.8	284.8	0.00	0.00	
1,800.0	23.52	250.72	1,743.6	-107.2	-306.5	324.7	0.00	0.00	
1,900.0	23.52	250.72	1,835.3	-120.4	-344.2	364.6	0.00	0.00	
2,000.0	23.52	250.72	1,927.0	-133.5	-381.8	404.5	0.00	0.00	
2,100.0	23.52	250.72	2,018.7	-146.7	-419.5	444.4	0.00	0.00	
2,200.0	23.52	250.72	2,110.4	-159.9	-457.2	484.3	0.00	0.00	
2,300.0	23.52	250.72	2,202.1	-173.1	-494.8	524.2	0.00	0.00	
2,400.0	23.52	250.72	2,293.8	-186.2	-532.5	564.1	0.00	0.00	
2,500.0	23.52	250.72	2,385.4	-199.4	-570.2	604.0	0.00	0.00	
2,600.0	23.52	250.72	2,477.1	-212.6	-607.9	643.9	0.00	0.00	
2,700.0	23.52	250.72	2,568.8	-225.7	-645.5	683.9	0.00	0.00	
2,800.0	23.52	250.72	2,660.5	-238.9	-683.2	723.8	0.00	0.00	
2,900.0	23.52	250.72	2,752.2	-252.1	-720.9	763.7	0.00	0.00	
3,000.0	23.52	250.72	2,843.9	-265.3	-758.5	803.6	0.00	0.00	
3,100.0	23.52	250.72	2,935.6	-278.4	-796.2	843.5	0.00	0.00	
3,200.0	23.52	250.72	3,027.3	-291.6	-833.9	883.4	0.00	0.00	
3,300.0	23.52	250.72	3,119.0	-304.8	-871.5	923.3	0.00	0.00	
3,400.0	23.52	250.72	3,210.7	-318.0	-909.2	963.2	0.00	0.00	
3,500.0	23.52	250.72	3,302.4	-331.1	-946.9	1,003.1	0.00	0.00	
3,584.7	23.52	250.72	3,380.0	-342.3	-978.8	1,036.9	0.00	0.00	Parkman
3,600.0	23.52	250.72	3,394.1	-344.3	-984.6	1,043.0	0.00	0.00	
3,700.0	23.52	250.72	3,485.7	-357.5	-1,022.2	1,082.9	0.00	0.00	
3,800.0	23.52	250.72	3,577.4	-370.7	-1,059.9	1,122.8	0.00	0.00	
3,900.0	23.52	250.72	3,669.1	-383.8	-1,097.6	1,162.8	0.00	0.00	
4,000.0	23.52	250.72	3,760.8	-397.0	-1,135.2	1,202.7	0.00	0.00	
4,100.0	23.52	250.72	3,852.5	-410.2	-1,172.9	1,242.6	0.00	0.00	
4,200.0	23.52	250.72	3,944.2	-423.4	-1,210.6	1,282.5	0.00	0.00	
4,300.0	23.52	250.72	4,035.9	-436.5	-1,248.3	1,322.4	0.00	0.00	
4,306.7	23.52	250.72	4,042.0	-437.4	-1,250.8	1,325.0	0.00	0.00	Sussex
4,400.0	23.52	250.72	4,127.6	-449.7	-1,285.9	1,362.3	0.00	0.00	
4,500.0	23.52	250.72	4,219.3	-462.9	-1,323.6	1,402.2	0.00	0.00	
4,600.0	23.52	250.72	4,311.0	-476.1	-1,361.3	1,442.1	0.00	0.00	
4,700.0	23.52	250.72	4,402.7	-489.2	-1,398.9	1,482.0	0.00	0.00	
4,800.0	23.52	250.72	4,494.4	-502.4	-1,436.6	1,521.9	0.00	0.00	

Cathedral Energy Services

Planning Report

Database:	USA EDM 5000 Multi Users DB	Local Co-ordinate Reference:	Well Antelope B-19
Company:	Bonanza Creek Energy Operating Company, LLC	TVD Reference:	KBE @ 4610.0ft (Original Well Elev)
Project:	Weld County	MD Reference:	KBE @ 4610.0ft (Original Well Elev)
Site:	Antelope 21-19 Pad	North Reference:	True
Well:	Antelope B-19	Survey Calculation Method:	Minimum Curvature
Wellbore:	OH		
Design:	Plan #1		

Planned Survey									
Measured Depth (ft)	Inclination (°)	Azimuth (°)	Vertical Depth (ft)	+N/-S (ft)	+E/-W (ft)	Vertical Section (ft)	Dogleg Rate (°/100ft)	Build Rate (°/100ft)	Comments / Formations
4,900.0	23.52	250.72	4,586.0	-515.6	-1,474.3	1,561.8	0.00	0.00	
5,000.0	23.52	250.72	4,677.7	-528.8	-1,512.0	1,601.7	0.00	0.00	
5,100.0	23.52	250.72	4,769.4	-541.9	-1,549.6	1,641.6	0.00	0.00	
5,200.0	23.52	250.72	4,861.1	-555.1	-1,587.3	1,681.6	0.00	0.00	
5,300.0	23.52	250.72	4,952.8	-568.3	-1,625.0	1,721.5	0.00	0.00	
5,400.0	23.52	250.72	5,044.5	-581.4	-1,662.6	1,761.4	0.00	0.00	
5,500.0	23.52	250.72	5,136.2	-594.6	-1,700.3	1,801.3	0.00	0.00	
5,600.0	23.52	250.72	5,227.9	-607.8	-1,738.0	1,841.2	0.00	0.00	
5,676.3	23.52	250.72	5,297.8	-617.8	-1,766.7	1,871.6	0.00	0.00	Start 3° Drop
5,700.0	22.81	250.72	5,319.6	-620.9	-1,775.5	1,881.0	3.00	-3.00	
5,800.0	19.81	250.72	5,412.8	-632.9	-1,809.8	1,917.3	3.00	-3.00	
5,900.0	16.81	250.72	5,507.7	-643.3	-1,839.5	1,948.7	3.00	-3.00	
6,000.0	13.81	250.72	5,604.2	-652.0	-1,864.4	1,975.1	3.00	-3.00	
6,100.0	10.81	250.72	5,701.8	-659.0	-1,884.5	1,996.4	3.00	-3.00	
6,200.0	7.81	250.72	5,800.5	-664.4	-1,899.8	2,012.6	3.00	-3.00	
6,300.0	4.81	250.72	5,899.9	-668.0	-1,910.1	2,023.6	3.00	-3.00	
6,400.0	1.81	250.72	5,999.7	-669.9	-1,915.6	2,029.3	3.00	-3.00	
6,460.3	0.00	0.00	6,060.0	-670.2	-1,916.5	2,030.3	3.00	-3.00	EOD @ Inc. = 0°
6,500.0	0.00	0.00	6,099.7	-670.2	-1,916.5	2,030.3	0.00	0.00	
6,600.0	0.00	0.00	6,199.7	-670.2	-1,916.5	2,030.3	0.00	0.00	
6,660.3	0.00	0.00	6,260.0	-670.2	-1,916.5	2,030.3	0.00	0.00	Niobrara
6,700.0	0.00	0.00	6,299.7	-670.2	-1,916.5	2,030.3	0.00	0.00	
6,800.0	0.00	0.00	6,399.7	-670.2	-1,916.5	2,030.3	0.00	0.00	
6,892.3	0.00	0.00	6,492.0	-670.2	-1,916.5	2,030.3	0.00	0.00	Ft. Hayes
6,900.0	0.00	0.00	6,499.7	-670.2	-1,916.5	2,030.3	0.00	0.00	
6,916.3	0.00	0.00	6,516.0	-670.2	-1,916.5	2,030.3	0.00	0.00	Codell
6,928.3	0.00	0.00	6,528.0	-670.2	-1,916.5	2,030.3	0.00	0.00	Carlile
6,964.3	0.00	0.00	6,564.0	-670.2	-1,916.5	2,030.3	0.00	0.00	Greenhorn
7,000.0	0.00	0.00	6,599.7	-670.2	-1,916.5	2,030.3	0.00	0.00	
7,076.3	0.00	0.00	6,676.0	-670.2	-1,916.5	2,030.3	0.00	0.00	TD @ 7,076.3' MD

Targets									
Target Name	Dip Angle (°)	Dip Dir. (°)	TVD (ft)	+N/-S (ft)	+E/-W (ft)	Northing (ft)	Easting (ft)	Latitude	Longitude
- hit/miss target									
- Shape									
Antelope B-19 PBHL	0.00	0.00	6,676.0	-670.2	-1,916.5	1,386,267.56	3,313,429.65	40.388240	-104.374810
- plan hits target center									
- Circle (radius 50.0)									
Antelope B-19 TGT	0.00	0.00	6,060.0	-670.2	-1,916.5	1,386,267.56	3,313,429.65	40.388240	-104.374810
- plan hits target center									
- Point									

Cathedral Energy Services

Planning Report

Database:	USA EDM 5000 Multi Users DB	Local Co-ordinate Reference:	Well Antelope B-19
Company:	Bonanza Creek Energy Operating Company, LLC	TVD Reference:	KBE @ 4610.0ft (Original Well Elev)
Project:	Weld County	MD Reference:	KBE @ 4610.0ft (Original Well Elev)
Site:	Antelope 21-19 Pad	North Reference:	True
Well:	Antelope B-19	Survey Calculation Method:	Minimum Curvature
Wellbore:	OH		
Design:	Plan #1		

Formations						
Measured Depth (ft)	Vertical Depth (ft)	Name	Lithology	Dip (°)	Dip Direction (°)	
3,584.7	3,380.0	Parkman				
4,306.7	4,042.0	Sussex				
6,660.3	6,260.0	Niobrara				
6,892.3	6,492.0	Ft. Hayes				
6,916.3	6,516.0	Codell				
6,928.3	6,528.0	Carlile				
6,964.3	6,564.0	Greenhorn				

Plan Annotations				
Measured Depth (ft)	Vertical Depth (ft)	Local Coordinates		Comment
		+N/-S (ft)	+E/-W (ft)	
600.0	600.0	0.0	0.0	KOP @ 600'
1,384.0	1,362.2	-52.4	-149.8	EOB @ Inc. = 23.52°
5,676.3	5,297.8	-617.8	-1,766.7	Start 3° Drop
6,460.3	6,060.0	-670.2	-1,916.5	EOD @ Inc. = 0°
7,076.3	6,676.0	-670.2	-1,916.5	TD @ 7,076.3' MD

Bonanza Creek Energy Operating Company, LLC

Weld County

Antelope 21-19 Pad

Antelope B-19

OH

Plan #1

Anticollision Report

08 December, 2011

Cathedral Energy Services

Anticollision Report

Company:	Bonanza Creek Energy Operating Company, LLC	Local Co-ordinate Reference:	Well Antelope B-19
Project:	Weld County	TVD Reference:	KBE @ 4610.0ft (Original Well Elev)
Reference Site:	Antelope 21-19 Pad	MD Reference:	KBE @ 4610.0ft (Original Well Elev)
Site Error:	0.0ft	North Reference:	True
Reference Well:	Antelope B-19	Survey Calculation Method:	Minimum Curvature
Well Error:	0.0ft	Output errors are at	2.00 sigma
Reference Wellbore	OH	Database:	USA EDM 5000 Multi Users DB
Reference Design:	Plan #1	Offset TVD Reference:	Offset Datum

Reference	Plan #1		
Filter type:	NO GLOBAL FILTER: Using user defined selection & filtering criteria		
Interpolation Method:	MD Interval 100.0ft	Error Model:	Systematic Ellipse
Depth Range:	Unlimited	Scan Method:	Closest Approach 3D
Results Limited by:	Maximum center-center distance of 500.0ft	Error Surface:	Elliptical Conic
Warning Levels Evaluated at:	2.00 Sigma		

Survey Tool Program		Date	12/8/2011		
From (ft)	To (ft)	Survey (Wellbore)	Tool Name	Description	
0.0	7,076.3	Plan #1 (OH)	MWD	Geolink MWD	

Summary						
Site Name	Reference	Offset	Distance		Separation	Warning
	Measured	Measured	Between	Between		
Offset Well - Wellbore - Design	Depth	Depth	Centres	Ellipses	Factor	
	(ft)	(ft)	(ft)	(ft)		
Antelope 21-19 Pad						
Antelope 21-19 (vert) - DD - Plan #1	0.0	4.0	35.1			
Antelope 21-19 (vert) - DD - Plan #1	600.0	604.0	35.1	35.1	10,000.000	CC, ES
Antelope 31-19 - DD - DD	0.0	4.0	49.1			
Antelope 31-19 - DD - DD	624.9	629.4	47.6	47.6	10,000.000	CC, ES
Antelope F-19 - OH - Plan #1	0.0	0.0	14.6			
Antelope F-19 - OH - Plan #1	600.0	600.0	14.6	14.6	10,000.000	CC, ES
Antelope K-19 - OH - Plan #1	0.0	0.0	58.3			
Antelope K-19 - OH - Plan #1	600.0	600.0	58.3	58.3	10,000.000	CC, ES
Antelope L-19 - OH - Plan #1	0.0	85.0	14.6			
Antelope L-19 - OH - Plan #1	500.0	585.0	14.6	14.6	10,000.000	CC, ES

Cathedral Energy Services

Anticollision Report

Company:	Bonanza Creek Energy Operating Company, LLC	Local Co-ordinate Reference:	Well Antelope B-19
Project:	Weld County	TVD Reference:	KBE @ 4610.0ft (Original Well Elev)
Reference Site:	Antelope 21-19 Pad	MD Reference:	KBE @ 4610.0ft (Original Well Elev)
Site Error:	0.0ft	North Reference:	True
Reference Well:	Antelope B-19	Survey Calculation Method:	Minimum Curvature
Well Error:	0.0ft	Output errors are at	2.00 sigma
Reference Wellbore	OH	Database:	USA EDM 5000 Multi Users DB
Reference Design:	Plan #1	Offset TVD Reference:	Offset Datum

Offset Design Antelope 21-19 Pad - Antelope 21-19 (vert) - DD - Plan #1													Offset Site Error:	0.0 ft
Survey Program: 0-MWD													Offset Well Error:	0.0 ft
Reference		Offset		Semi Major Axis		Highside Toolface (°)	Distance		Total Uncertainty Axis	Separation Factor	Warning			
Measured Depth (ft)	Vertical Depth (ft)	Measured Depth (ft)	Vertical Depth (ft)	Reference (ft)	Offset (ft)		Offset Wellbore Centre +N/-S (ft)	+E/-W (ft)						
0.0	0.0	4.0	4.0	0.0	0.0	33.78	29.1	19.5	35.1					
100.0	100.0	104.0	104.0	0.2	0.2	33.78	29.1	19.5	35.1	0.00	N/A			
200.0	200.0	204.0	204.0	0.3	0.3	33.78	29.1	19.5	35.1	0.00	N/A			
300.0	300.0	304.0	304.0	0.5	0.5	33.78	29.1	19.5	35.1	0.00	N/A			
400.0	400.0	404.0	404.0	0.7	0.7	33.78	29.1	19.5	35.1	0.00	N/A			
500.0	500.0	504.0	504.0	0.9	0.9	33.78	29.1	19.5	35.1	0.00	N/A			
600.0	600.0	604.0	604.0	1.0	1.0	33.78	29.1	19.5	35.1	0.00	N/A CC, ES			
700.0	700.0	704.0	704.0	1.2	1.2	145.45	29.1	19.5	37.2	0.00	N/A			
800.0	799.6	803.6	803.6	1.4	1.4	151.17	29.1	19.5	43.9	0.00	N/A			
900.0	898.8	902.8	902.8	1.6	1.6	157.51	29.1	19.5	55.7	0.00	N/A			
1,000.0	997.1	1,001.1	1,001.1	2.0	1.7	162.84	29.1	19.5	72.9	0.00	N/A			
1,100.0	1,094.3	1,098.3	1,098.3	2.4	1.9	166.81	29.1	19.5	95.5	0.00	N/A			
1,200.0	1,190.2	1,194.2	1,194.2	2.8	2.1	169.66	29.1	19.5	123.3	0.00	N/A			
1,300.0	1,284.4	1,288.4	1,288.4	3.4	2.2	171.71	29.1	19.5	156.3	0.00	N/A			
1,400.0	1,376.8	1,380.8	1,380.8	4.1	2.4	173.21	29.1	19.5	194.2	0.00	N/A			
1,500.0	1,468.5	1,472.5	1,472.5	4.8	2.6	174.37	29.1	19.5	233.9	0.00	N/A			
1,600.0	1,560.2	1,564.2	1,564.2	5.6	2.7	175.19	29.1	19.5	273.7	0.00	N/A			
1,700.0	1,651.9	1,655.9	1,655.9	6.3	2.9	175.80	29.1	19.5	313.5	0.00	N/A			
1,800.0	1,743.6	1,747.6	1,747.6	7.0	3.0	176.27	29.1	19.5	353.3	0.00	N/A			
1,900.0	1,835.3	1,839.3	1,839.3	7.8	3.2	176.65	29.1	19.5	393.2	0.00	N/A			
2,000.0	1,927.0	1,931.0	1,931.0	8.5	3.4	176.96	29.1	19.5	433.0	0.00	N/A			
2,100.0	2,018.7	2,022.7	2,022.7	9.3	3.5	177.21	29.1	19.5	472.9	0.00	N/A			

Cathedral Energy Services

Anticollision Report

Company:	Bonanza Creek Energy Operating Company, LLC	Local Co-ordinate Reference:	Well Antelope B-19
Project:	Weld County	TVD Reference:	KBE @ 4610.0ft (Original Well Elev)
Reference Site:	Antelope 21-19 Pad	MD Reference:	KBE @ 4610.0ft (Original Well Elev)
Site Error:	0.0ft	North Reference:	True
Reference Well:	Antelope B-19	Survey Calculation Method:	Minimum Curvature
Well Error:	0.0ft	Output errors are at	2.00 sigma
Reference Wellbore	OH	Database:	USA EDM 5000 Multi Users DB
Reference Design:	Plan #1	Offset TVD Reference:	Offset Datum

Offset Design Antelope 21-19 Pad - Antelope 31-19 - DD - DD													Offset Site Error:	0.0 ft
Survey Program: 468-MWD													Offset Well Error:	0.0 ft
Reference		Offset		Semi Major Axis			Distance						Warning	
Measured Depth (ft)	Vertical Depth (ft)	Measured Depth (ft)	Vertical Depth (ft)	Reference (ft)	Offset (ft)	Highside Toolface (°)	Offset Wellbore Centre +N/-S (ft)	+E/-W (ft)	Between Centres (ft)	Between Ellipses (ft)	Total Uncertainty Axis	Separation Factor		
0.0	0.0	4.0	4.0	0.0	0.0	27.01	43.7	22.3	49.1					
100.0	100.0	104.0	104.0	0.2	0.2	26.85	43.7	22.1	49.0	49.0	0.00	N/A		
200.0	200.0	204.1	204.1	0.3	0.4	26.41	43.8	21.7	48.9	48.9	0.00	N/A		
300.0	300.0	304.1	304.1	0.5	0.5	25.68	43.9	21.1	48.7	48.7	0.00	N/A		
400.0	400.0	404.2	404.2	0.7	0.7	24.64	44.0	20.2	48.4	48.4	0.00	N/A		
500.0	500.0	504.2	504.2	0.9	0.9	23.66	44.0	19.3	48.0	48.0	0.00	N/A		
600.0	600.0	604.4	604.4	1.0	1.0	26.72	42.6	21.4	47.7	47.7	0.00	N/A		
624.9	624.9	629.4	629.3	1.1	1.1	137.69	41.8	22.5	47.6	47.6	0.00	N/A CC, ES		
700.0	700.0	703.8	703.5	1.2	1.2	146.11	38.4	27.0	49.1	49.1	0.00	N/A		
800.0	799.6	800.0	798.9	1.4	1.4	161.59	33.1	37.9	60.4	60.4	0.00	N/A		
900.0	898.8	892.6	890.1	1.6	1.7	173.48	28.3	53.2	84.5	84.5	0.00	N/A		
1,000.0	997.1	981.7	977.2	2.0	2.0	-179.59	24.3	71.8	120.0	120.0	0.00	N/A		
1,100.0	1,094.3	1,067.1	1,060.3	2.4	2.3	-176.85	23.5	91.2	163.6	163.6	0.00	N/A		
1,200.0	1,190.2	1,145.4	1,135.9	2.8	2.7	-175.66	24.6	111.3	215.2	215.2	0.00	N/A		
1,300.0	1,284.4	1,217.6	1,205.0	3.4	3.1	-175.05	26.7	132.3	274.2	274.2	0.00	N/A		
1,400.0	1,376.8	1,293.5	1,277.2	4.1	3.4	-174.73	29.6	155.6	338.8	338.8	0.00	N/A		
1,500.0	1,468.5	1,372.0	1,351.9	4.8	3.9	-174.75	33.0	179.3	404.5	404.5	0.00	N/A		
1,600.0	1,560.2	1,457.5	1,433.7	5.6	4.3	-174.80	36.6	204.0	469.2	469.2	0.00	N/A		

Cathedral Energy Services

Anticollision Report

Company:	Bonanza Creek Energy Operating Company, LLC	Local Co-ordinate Reference:	Well Antelope B-19
Project:	Weld County	TVD Reference:	KBE @ 4610.0ft (Original Well Elev)
Reference Site:	Antelope 21-19 Pad	MD Reference:	KBE @ 4610.0ft (Original Well Elev)
Site Error:	0.0ft	North Reference:	True
Reference Well:	Antelope B-19	Survey Calculation Method:	Minimum Curvature
Well Error:	0.0ft	Output errors are at	2.00 sigma
Reference Wellbore	OH	Database:	USA EDM 5000 Multi Users DB
Reference Design:	Plan #1	Offset TVD Reference:	Offset Datum

Offset Design Antelope 21-19 Pad - Antelope F-19 - OH - Plan #1													Offset Site Error:	0.0 ft
Survey Program: 0-MWD													Offset Well Error:	0.0 ft
Reference		Offset		Semi Major Axis			Distance				Total	Separation	Warning	
Measured Depth (ft)	Vertical Depth (ft)	Measured Depth (ft)	Vertical Depth (ft)	Reference (ft)	Offset (ft)	Highside Toolface (°)	Offset Wellbore Centre +N/-S (ft)	+E/-W (ft)	Between Centres (ft)	Between Ellipses (ft)	Uncertainty Axis	Factor		
0.0	0.0	0.0	0.0	0.0	0.0	0.00	14.6	0.0	14.6					
100.0	100.0	100.0	100.0	0.2	0.2	0.00	14.6	0.0	14.6	14.6	0.00	N/A		
200.0	200.0	200.0	200.0	0.3	0.3	0.00	14.6	0.0	14.6	14.6	0.00	N/A		
300.0	300.0	300.0	300.0	0.5	0.5	0.00	14.6	0.0	14.6	14.6	0.00	N/A		
400.0	400.0	400.0	400.0	0.7	0.7	0.00	14.6	0.0	14.6	14.6	0.00	N/A		
500.0	500.0	500.0	500.0	0.9	0.9	0.00	14.6	0.0	14.6	14.6	0.00	N/A		
600.0	600.0	600.0	600.0	1.0	1.0	0.00	14.6	0.0	14.6	14.6	0.00	N/A CC, ES		
700.0	700.0	699.5	699.4	1.2	1.2	110.75	16.2	-2.0	17.1	17.1	0.00	N/A		
800.0	799.6	798.5	798.2	1.4	1.4	113.32	21.2	-7.9	24.7	24.7	0.00	N/A		
900.0	898.8	896.8	895.6	1.6	1.6	115.18	29.3	-17.7	37.4	37.4	0.00	N/A		
1,000.0	997.1	994.6	991.8	2.0	1.9	116.60	40.2	-31.0	54.9	54.9	0.00	N/A		
1,100.0	1,094.3	1,092.3	1,087.9	2.4	2.2	120.04	51.7	-44.9	75.3	75.3	0.00	N/A		
1,200.0	1,190.2	1,189.3	1,183.2	2.8	2.5	124.33	63.1	-58.6	98.8	98.8	0.00	N/A		
1,300.0	1,284.4	1,285.1	1,277.4	3.4	2.9	128.62	74.4	-72.3	125.8	125.8	0.00	N/A		
1,400.0	1,376.8	1,379.6	1,370.2	4.1	3.2	132.66	85.5	-85.7	156.7	156.7	0.00	N/A		
1,500.0	1,468.5	1,473.5	1,462.5	4.8	3.5	136.18	96.5	-99.0	189.5	189.5	0.00	N/A		
1,600.0	1,560.2	1,567.4	1,554.9	5.6	3.8	138.67	107.6	-112.4	222.8	222.8	0.00	N/A		
1,700.0	1,651.9	1,661.3	1,647.2	6.3	4.2	140.52	118.6	-125.7	256.3	256.3	0.00	N/A		
1,800.0	1,743.6	1,755.2	1,739.5	7.0	4.5	141.93	129.7	-139.1	290.1	290.1	0.00	N/A		
1,900.0	1,835.3	1,849.2	1,831.8	7.8	4.9	143.06	140.7	-152.4	323.9	323.9	0.00	N/A		
2,000.0	1,927.0	1,943.1	1,924.1	8.5	5.2	143.97	151.8	-165.8	357.9	357.9	0.00	N/A		
2,100.0	2,018.7	2,037.0	2,016.4	9.3	5.5	144.72	162.8	-179.1	391.9	391.9	0.00	N/A		
2,200.0	2,110.4	2,130.9	2,108.7	10.0	5.9	145.35	173.8	-192.5	425.9	425.9	0.00	N/A		
2,300.0	2,202.1	2,224.9	2,201.0	10.8	6.2	145.89	184.9	-205.8	460.0	460.0	0.00	N/A		
2,400.0	2,293.8	2,318.8	2,293.3	11.6	6.5	146.36	195.9	-219.2	494.2	494.2	0.00	N/A		

Cathedral Energy Services

Anticollision Report

Company:	Bonanza Creek Energy Operating Company, LLC	Local Co-ordinate Reference:	Well Antelope B-19
Project:	Weld County	TVD Reference:	KBE @ 4610.0ft (Original Well Elev)
Reference Site:	Antelope 21-19 Pad	MD Reference:	KBE @ 4610.0ft (Original Well Elev)
Site Error:	0.0ft	North Reference:	True
Reference Well:	Antelope B-19	Survey Calculation Method:	Minimum Curvature
Well Error:	0.0ft	Output errors are at	2.00 sigma
Reference Wellbore	OH	Database:	USA EDM 5000 Multi Users DB
Reference Design:	Plan #1	Offset TVD Reference:	Offset Datum

Offset Design Antelope 21-19 Pad - Antelope K-19 - OH - Plan #1													Offset Site Error:	0.0 ft
Survey Program: 0-MWD													Offset Well Error:	0.0 ft
Reference		Offset		Semi Major Axis			Distance					Separation Factor	Warning	
Measured Depth (ft)	Vertical Depth (ft)	Measured Depth (ft)	Vertical Depth (ft)	Reference (ft)	Offset (ft)	Highside Toolface (°)	Offset Wellbore Centre +N/-S (ft)	+E/-W (ft)	Between Centres (ft)	Between Ellipses (ft)	Total Uncertainty Axis			
0.0	0.0	0.0	0.0	0.0	0.0	0.00	58.3	0.0	58.3					
100.0	100.0	100.0	100.0	0.2	0.2	0.00	58.3	0.0	58.3	58.3	0.00	N/A		
200.0	200.0	200.0	200.0	0.3	0.3	0.00	58.3	0.0	58.3	58.3	0.00	N/A		
300.0	300.0	300.0	300.0	0.5	0.5	0.00	58.3	0.0	58.3	58.3	0.00	N/A		
400.0	400.0	400.0	400.0	0.7	0.7	0.00	58.3	0.0	58.3	58.3	0.00	N/A		
500.0	500.0	500.0	500.0	0.9	0.9	0.00	58.3	0.0	58.3	58.3	0.00	N/A		
600.0	600.0	600.0	600.0	1.0	1.0	0.00	58.3	0.0	58.3	58.3	0.00	N/A CC, ES		
700.0	700.0	697.5	697.5	1.2	1.2	113.01	60.1	1.7	61.2	61.2	0.00	N/A		
800.0	799.6	793.6	793.3	1.4	1.4	122.05	65.6	6.5	71.3	71.3	0.00	N/A		
900.0	898.8	886.9	885.8	1.6	1.6	131.95	74.3	14.3	90.8	90.8	0.00	N/A		
1,000.0	997.1	981.1	978.9	2.0	1.9	140.13	85.2	24.0	118.9	118.9	0.00	N/A		
1,100.0	1,094.3	1,074.0	1,070.7	2.4	2.1	146.06	95.9	33.6	152.8	152.8	0.00	N/A		
1,200.0	1,190.2	1,164.9	1,160.5	2.8	2.4	150.39	106.3	43.0	192.2	192.2	0.00	N/A		
1,300.0	1,284.4	1,253.5	1,248.0	3.4	2.6	153.63	116.6	52.1	236.6	236.6	0.00	N/A		
1,400.0	1,376.8	1,339.6	1,333.1	4.1	2.9	156.19	126.5	61.0	285.8	285.8	0.00	N/A		
1,500.0	1,468.5	1,424.8	1,417.3	4.8	3.2	158.57	136.3	69.8	336.9	336.9	0.00	N/A		
1,600.0	1,560.2	1,510.0	1,501.4	5.6	3.4	160.33	146.1	78.5	388.4	388.4	0.00	N/A		
1,700.0	1,651.9	1,595.2	1,585.6	6.3	3.7	161.68	155.9	87.3	440.1	440.1	0.00	N/A		
1,800.0	1,743.6	1,680.4	1,669.8	7.0	3.9	162.75	165.8	96.1	492.0	492.0	0.00	N/A		

Cathedral Energy Services

Anticollision Report

Company:	Bonanza Creek Energy Operating Company, LLC	Local Co-ordinate Reference:	Well Antelope B-19
Project:	Weld County	TVD Reference:	KBE @ 4610.0ft (Original Well Elev)
Reference Site:	Antelope 21-19 Pad	MD Reference:	KBE @ 4610.0ft (Original Well Elev)
Site Error:	0.0ft	North Reference:	True
Reference Well:	Antelope B-19	Survey Calculation Method:	Minimum Curvature
Well Error:	0.0ft	Output errors are at	2.00 sigma
Reference Wellbore	OH	Database:	USA EDM 5000 Multi Users DB
Reference Design:	Plan #1	Offset TVD Reference:	Offset Datum

Offset Design Antelope 21-19 Pad - Antelope L-19 - OH - Plan #1													Offset Site Error:	0.0 ft
Survey Program: 0-MWD													Offset Well Error:	0.0 ft
Reference		Offset		Semi Major Axis			Distance					Separation Factor	Warning	
Measured Depth (ft)	Vertical Depth (ft)	Measured Depth (ft)	Vertical Depth (ft)	Reference (ft)	Offset (ft)	Highside Toolface (°)	Offset Wellbore Centre +N/-S (ft)	+E/-W (ft)	Between Centres (ft)	Between Ellipses (ft)	Total Uncertainty Axis			
0.0	0.0	85.0	85.0	0.0	0.1	-180.00	-14.6	0.0	14.6					
100.0	100.0	185.0	185.0	0.2	0.3	-180.00	-14.6	0.0	14.6	14.6	0.00	N/A		
200.0	200.0	285.0	285.0	0.3	0.5	-180.00	-14.6	0.0	14.6	14.6	0.00	N/A		
300.0	300.0	385.0	385.0	0.5	0.7	-180.00	-14.6	0.0	14.6	14.6	0.00	N/A		
400.0	400.0	485.0	485.0	0.7	0.8	-180.00	-14.6	0.0	14.6	14.6	0.00	N/A		
500.0	500.0	585.0	585.0	0.9	1.0	-180.00	-14.6	0.0	14.6	14.6	0.00	N/A CC, ES		
600.0	600.0	684.5	684.4	1.0	1.2	175.43	-15.9	1.3	16.0	16.0	0.00	N/A		
700.0	700.0	783.3	783.0	1.2	1.4	-93.24	-21.0	6.0	21.9	21.9	0.00	N/A		
800.0	799.6	880.4	879.4	1.4	1.6	-112.19	-29.6	14.0	35.8	35.8	0.00	N/A		
900.0	898.8	977.4	975.3	1.6	1.8	-124.09	-40.3	24.0	57.1	57.1	0.00	N/A		
1,000.0	997.1	1,073.5	1,070.3	2.0	2.1	-131.92	-50.9	33.8	83.0	83.0	0.00	N/A		
1,100.0	1,094.3	1,168.2	1,163.9	2.4	2.4	-137.54	-61.4	43.6	113.4	113.4	0.00	N/A		
1,200.0	1,190.2	1,261.3	1,255.9	2.8	2.6	-141.78	-71.7	53.1	148.4	148.4	0.00	N/A		
1,300.0	1,284.4	1,352.4	1,346.0	3.4	2.9	-145.06	-81.7	62.5	188.0	188.0	0.00	N/A		
1,400.0	1,376.8	1,441.5	1,434.0	4.1	3.2	-147.77	-91.5	71.7	232.1	232.1	0.00	N/A		
1,500.0	1,468.5	1,529.7	1,521.3	4.8	3.4	-150.29	-101.3	80.7	278.1	278.1	0.00	N/A		
1,600.0	1,560.2	1,617.9	1,608.5	5.6	3.7	-152.10	-111.0	89.8	324.5	324.5	0.00	N/A		
1,700.0	1,651.9	1,706.1	1,695.7	6.3	4.0	-153.47	-120.8	98.9	371.0	371.0	0.00	N/A		
1,800.0	1,743.6	1,794.4	1,782.9	7.0	4.3	-154.53	-130.5	107.9	417.6	417.6	0.00	N/A		
1,900.0	1,835.3	1,882.6	1,870.1	7.8	4.5	-155.37	-140.3	117.0	464.3	464.3	0.00	N/A		

Cathedral Energy Services

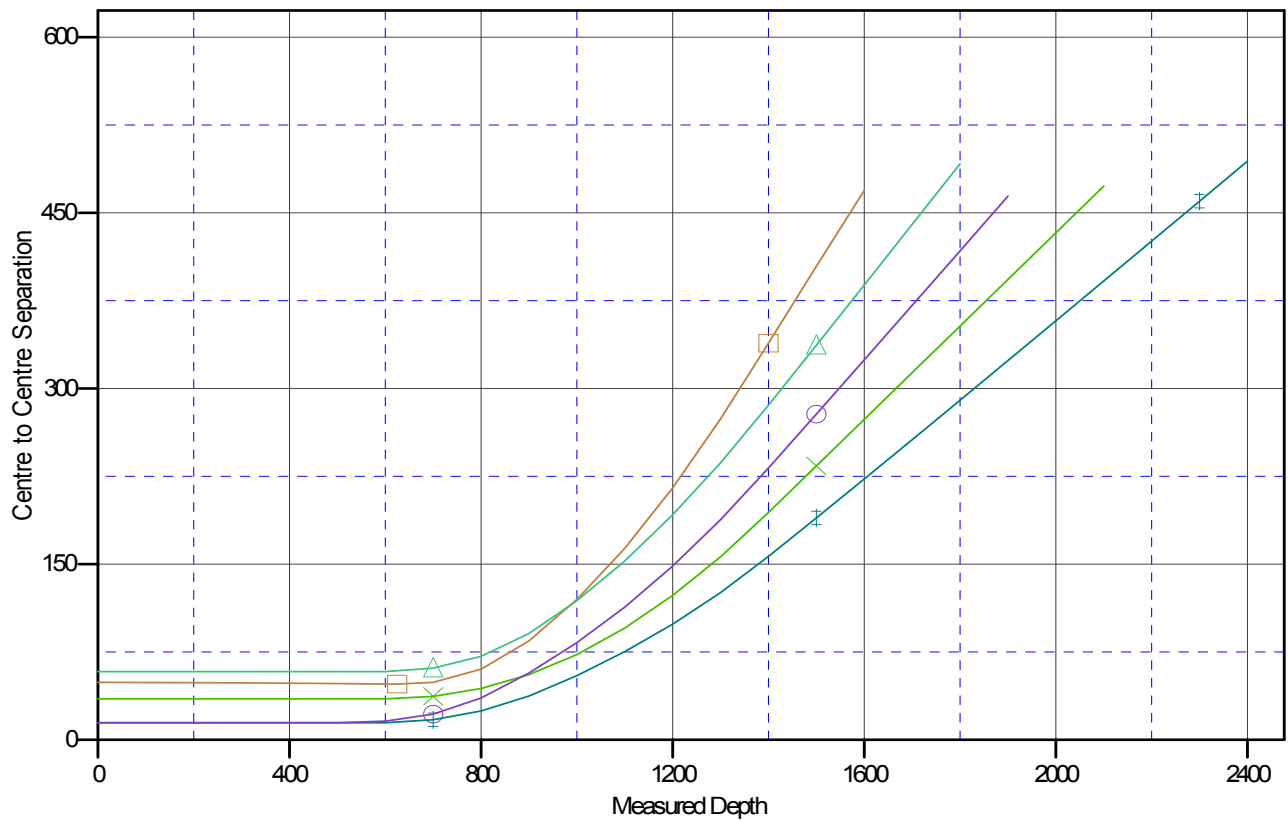
Anticollision Report

Company:	Bonanza Creek Energy Operating Company, LLC	Local Co-ordinate Reference:	Well Antelope B-19
Project:	Weld County	TVD Reference:	KBE @ 4610.0ft (Original Well Elev)
Reference Site:	Antelope 21-19 Pad	MD Reference:	KBE @ 4610.0ft (Original Well Elev)
Site Error:	0.0ft	North Reference:	True
Reference Well:	Antelope B-19	Survey Calculation Method:	Minimum Curvature
Well Error:	0.0ft	Output errors are at	2.00 sigma
Reference Wellbore	OH	Database:	USA EDM 5000 Multi Users DB
Reference Design:	Plan #1	Offset TVD Reference:	Offset Datum

Reference Depths are relative to KBE @ 4610.0ft (Original Well Elev)
 Offset Depths are relative to Offset Datum
 Central Meridian is -105.500000 °

Coordinates are relative to: Antelope B-19
 Coordinate System is US State Plane 1983, Colorado Northern Zone
 Grid Convergence at Surface is: 0.73°

Ladder Plot



LEGEND

- Antelope 21-19 (vert), DD, Plan #1 V0
- Antelope 31-19, DD, DD V0
- Antelope L-19, OH, Plan #1 V0
- Antelope F-19, OH, Plan #1 V0
- Antelope K-19, OH, Plan #1 V0