

ConocoPhillips Company
GRIMM #34-4H
LOCATED IN ARAPAHOE COUNTY, COLORADO
SECTION 34, T4S, R64W, 6th P.M.

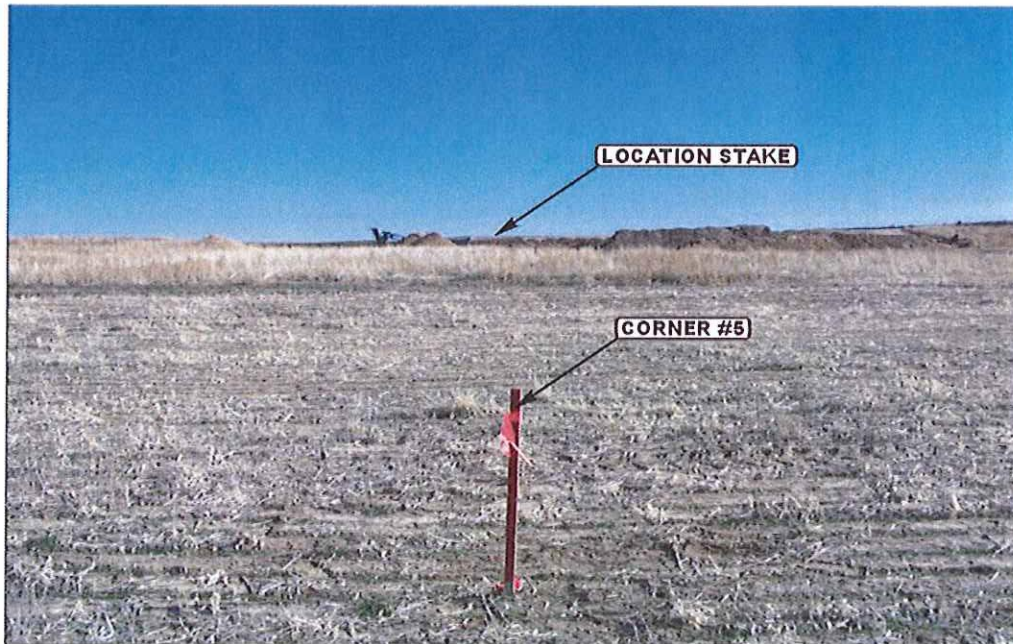


PHOTO: VIEW FROM CORNER #5 TO LOCATION STAKE

CAMERA ANGLE: EASTERLY

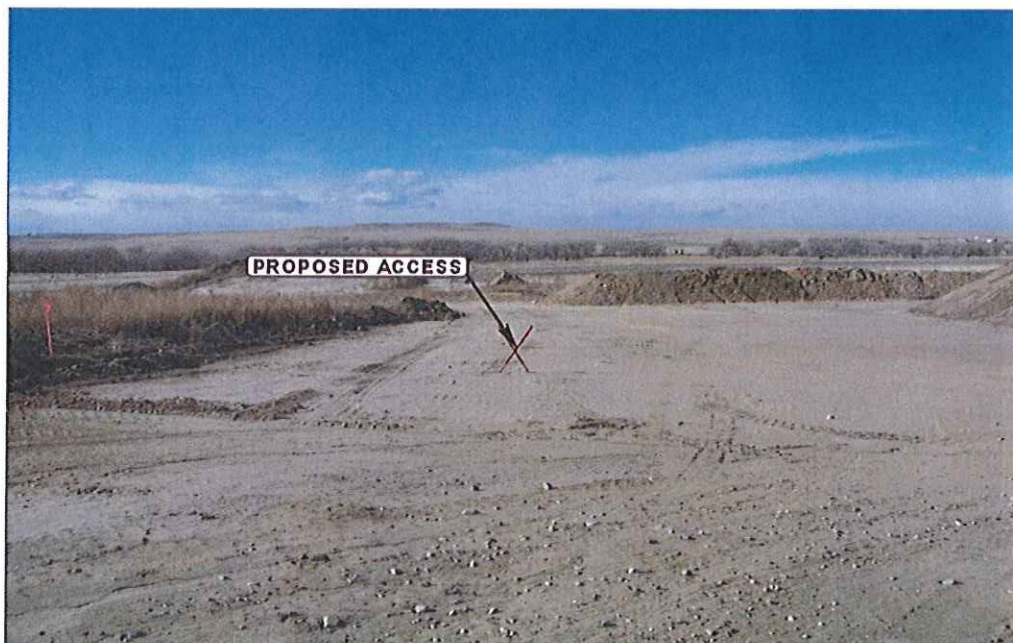


PHOTO: VIEW OF PROPOSED ACCESS

CAMERA ANGLE: WESTERLY



UELS

Uintah Engineering & Land Surveying
85 South 200 East Vernal, Utah 84078
(435) 789-1017 * FAX (435) 789-1813

LOCATION PHOTOS

12 02 11
MONTH DAY YEAR

PHOTO

P1

TAKEN BY: J.H.

DRAWN BY: C.I.

REVISED: 00-00-00

ConocoPhillips Company

GRIMM #34-4H

LOCATED IN ARAPAHOE COUNTY, COLORADO
SECTION 34, T4S, R64W, 6th P.M.

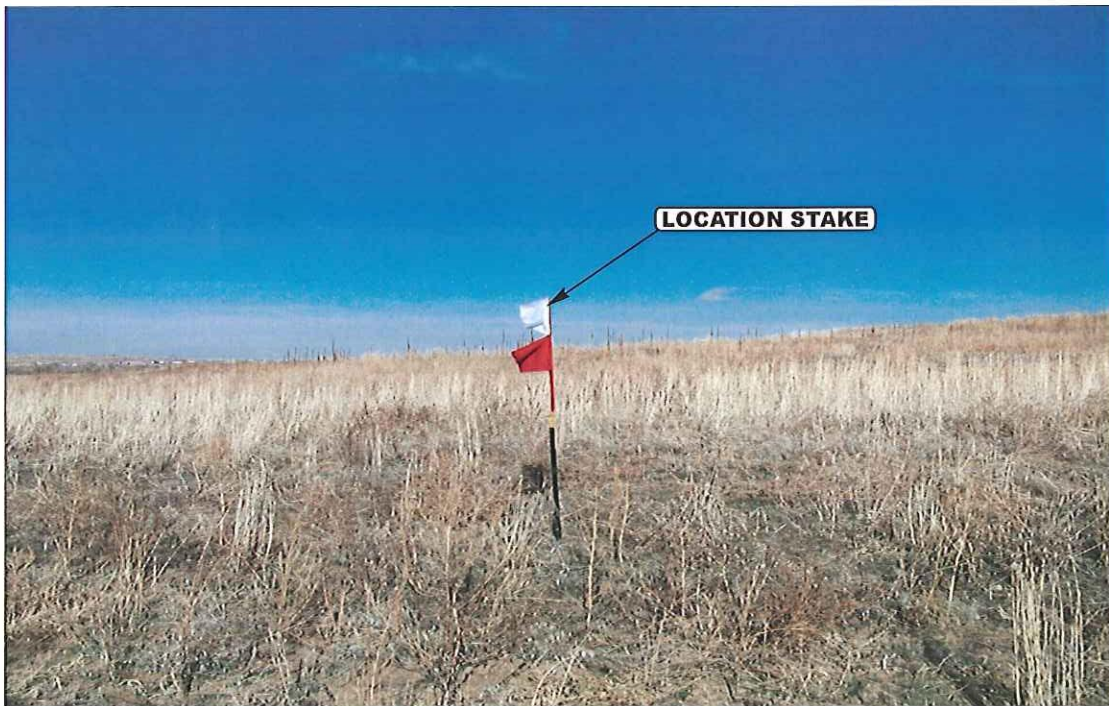


PHOTO: VIEW OF LOCATION STAKE

CAMERA ANGLE: NORTHERLY

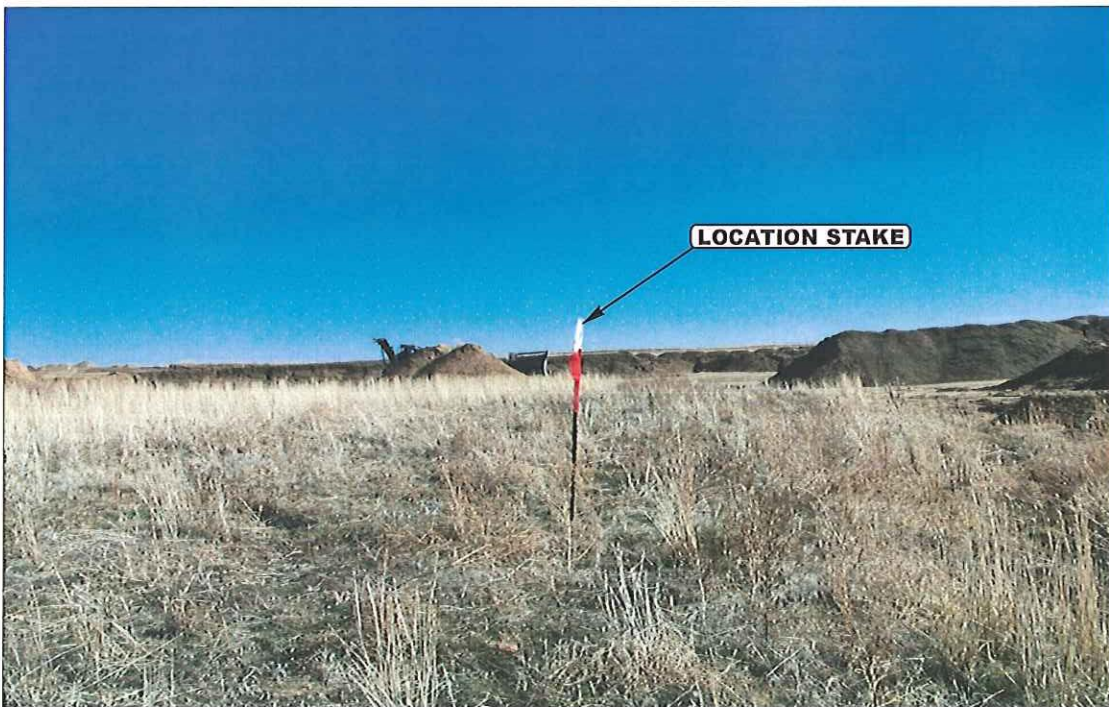


PHOTO: VIEW OF LOCATION STAKE

CAMERA ANGLE: EASTERLY



- Since 1964 -

UELS

Uintah Engineering & Land Surveying

85 South 200 East Vernal, Utah 84078
(435) 789-1017 * FAX (435) 789-1813

LOCATION PHOTOS

12 **02** **11**
MONTH DAY YEAR

TAKEN BY: J.H.

DRAWN BY: C.I.

REVISED: 00-00-00

PHOTO

P2

ConocoPhillips Company

GRIMM #34-4H

LOCATED IN ARAPAHOE COUNTY, COLORADO
SECTION 34, T4S, R64W, 6th P.M.



PHOTO: VIEW OF LOCATION STAKE

CAMERA ANGLE: SOUTHERLY



PHOTO: VIEW OF LOCATION STAKE

CAMERA ANGLE: WESTERLY



UELS

Uintah Engineering & Land Surveying
85 South 200 East Vernal, Utah 84078
(435) 789-1017 * FAX (435) 789-1813

LOCATION PHOTOS

12 **02** **11**
MONTH DAY YEAR

TAKEN BY: J.H.

DRAWN BY: C.I.

REVISED: 00-00-00

PHOTO
P3