

WILLIAMS PRODUCTION RMT COMPANY

T6S, R95W, 6th P.M.

Well location, EXXONMOBIL AP 321-20-695, located as shown in 19837 LA PAZ No.10 Placer of Section 20, T6S, R95W, 6th P.M., Garfield County, Colorado.

BASIS OF ELEVATION

SPOT ELEVATION AT THE NORTHWEST CORNER OF SECTION 30, T5S, R95W, 6th P.M. TAKEN FROM THE FORKED GULCH QUADRANGLE, COLORADO, GARFIELD COUNTY, 7.5 MINUTE SERIES (TOPOGRAPHICAL MAP) PUBLISHED BY THE UNITED STATES DEPARTMENT OF THE INTERIOR, GEOLOGICAL SURVEY. SAID ELEVATION IS MARKED AS BEING 5966 FEET.

BASIS OF BEARINGS

BASIS OF BEARINGS IS A G.P.S. OBSERVATION.

NOTE: SEE CURRENT FOOTAGE PLAT #6 FOR EXISTING IMPROVEMENT WITHIN 400' OF THE PROPOSED WELL DISTURBANCE.



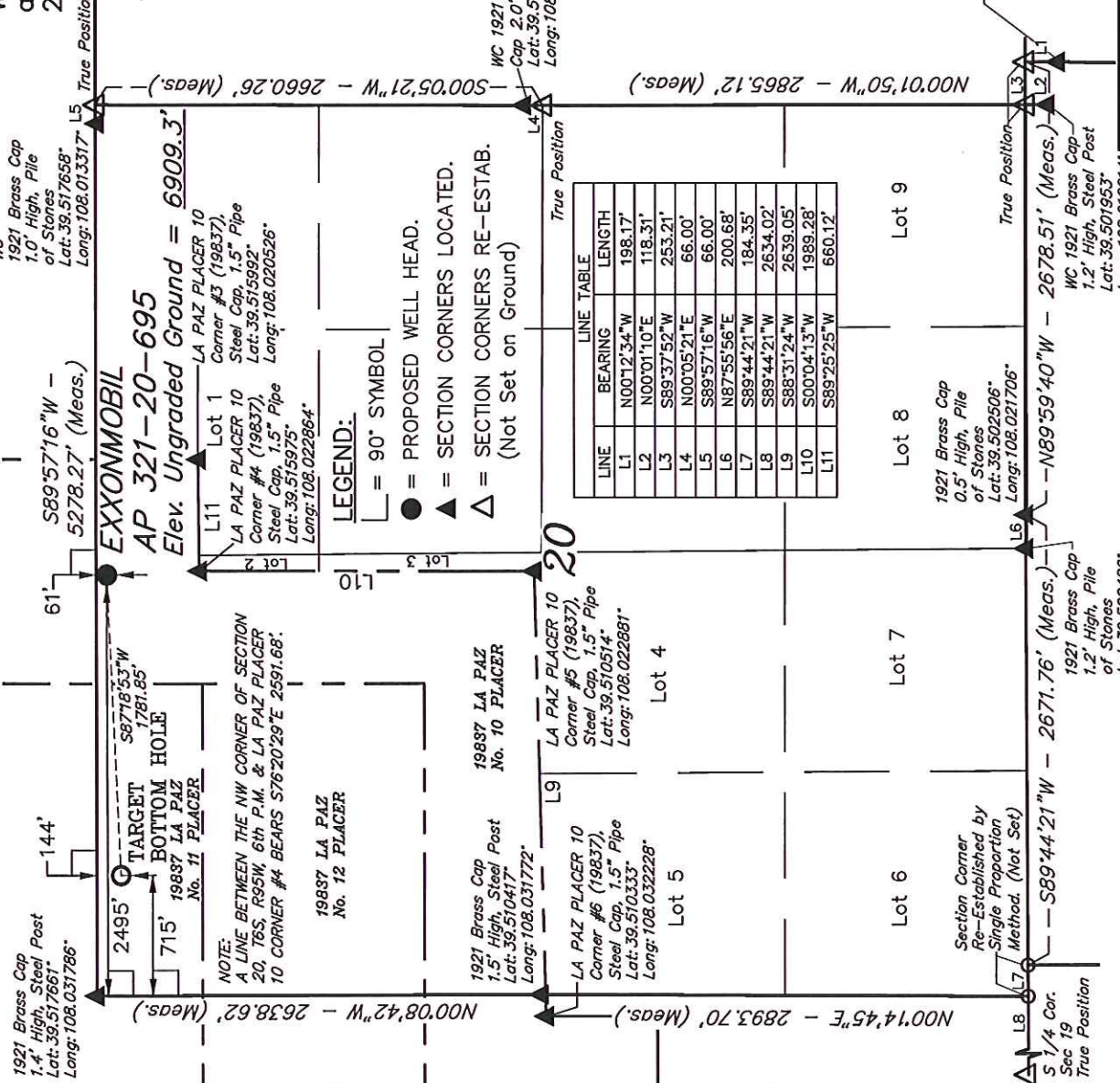
CERTIFICATE

THIS IS TO CERTIFY THAT THE ABOVE PLAT WAS PREPARED AND LOCATION AS SHOWN WAS STAKED ON THE GROUND FROM FIELD NOTES OF ACTUAL SURVEYS MADE BY ME OR UNDER MY SUPERVISION AND THAT THE SAME ARE TRUE AND CORRECT TO THE BEST OF MY KNOWLEDGE AND BELIEF.

Revised: 09-26-11 D.R.B.
Revised: 09-12-11 D.R.B.
WC 1921 Brass
Cap 1.2" High
Lat: 39.502167
Long: 108.013114

UNTAH ENGINEERING & LAND SURVEYING
85 SOUTH 200 EAST - VERNAL, UTAH 84078
(435) 789-1017

DATE SURVEYED: 04-28-10	DATE DRAWN: 03-17-11
PARTY: B.B. B.J. D.R.B.	REFERENCES: G.L.O. PLAT
WEATHER: COOL	FILE: WILLIAMS PRODUCTION RMT COMPANY



LINE	BEARING	LENGTH
L1	N00°12'34"W	198.17'
L2	N00°01'10"E	118.31'
L3	S89°37'52"W	253.21'
L4	N00°05'21"E	66.00'
L5	S89°57'16"W	66.00'
L6	N87°55'56"E	200.68'
L7	S89°44'21"W	184.35'
L8	S89°44'21"W	2634.02'
L9	S88°31'24"W	2639.05'
L10	S00°04'13"W	1989.28'
L11	S89°25'25"W	660.12'

LEGEND:

- 90° SYMBOL
- PROPOSED WELL HEAD.
- SECTION CORNERS LOCATED.
- SECTION CORNERS RE-ESTAB. (Not Set on Ground)

NAD 83 (SURFACE LOCATION)	NAD 83 (TARGET BOTTOM HOLE)
LATITUDE = 39°31'02.97" (39.517492)	LATITUDE = 39°31'02.16" (39.517267)
LONGITUDE = 108°01'22.61" (108.022947)	LONGITUDE = 108°01'45.31" (108.029253)
STATE PLANE - COLO. CENTRAL - NAD 83	STATE PLANE - COLO. CENTRAL - NAD 83
N = 1623257.219	N = 1623224.900
E = 2288332.200	E = 2286551.200