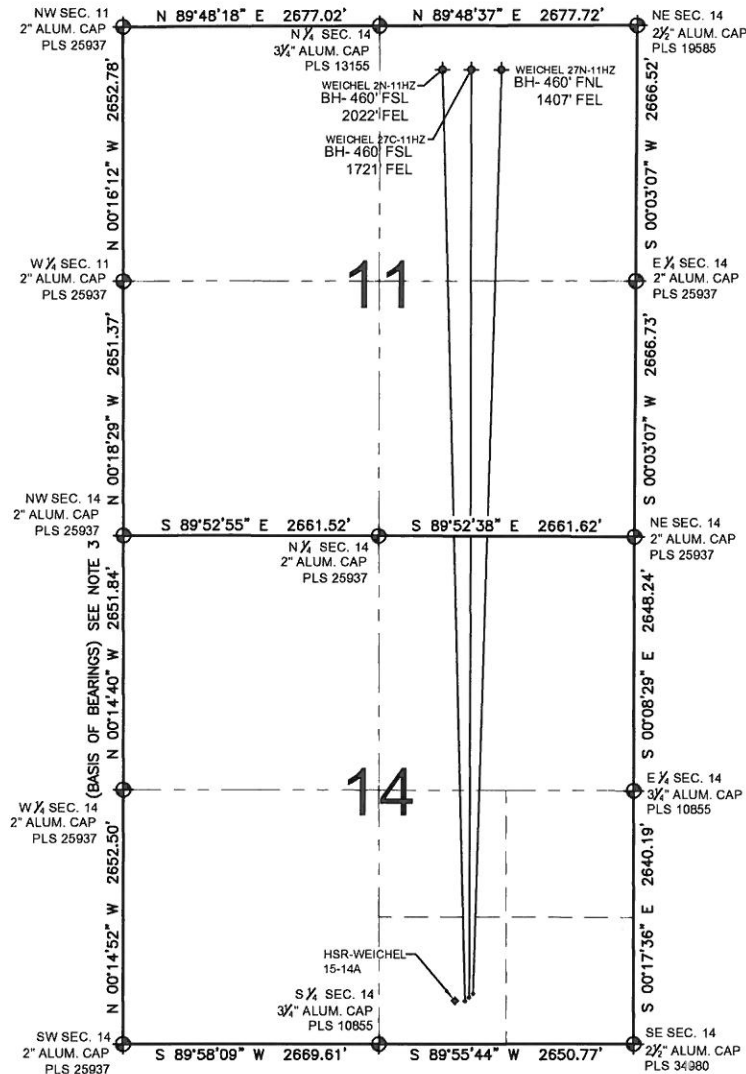


PAD DRAWING: WEICHEL 3 PAD

SECTION 14, TOWNSHIP 2 NORTH, RANGE 65 WEST, 6TH P.M.



LEGEND

- = EXISTING MONUMENT
 = BOTTOM HOLE
 BH= BOTTOM HOLE
 = PROPOSED WELL
 = EXISTING WELL

NOTES:

- THIS FIELD SURVEY CONFORMS TO THE MINIMUM STANDARDS SET BY THE C.O.G.C.C., RULE NO. 215
- HORIZONTAL POSITIONS AND ORTHOMETRIC ELEVATIONS SHOWN AT THE WELL HEAD, ARE BASED ON GPS-RTK POSITIONS DERIVED FROM MINIMUM 2-HOUR STATIC OBSERVATIONS CORRECTED BY THE NATIONAL GEODETIC SURVEY ONLINE POSITIONING USER SERVICE, O.P.U.S.
DATUM: HORIZONTAL = NAD83/2007, VERTICAL = NAVD88
- THE BASIS OF BEARINGS ARE STATE PLANE COORDINATE SYSTEM GRID BEARINGS SHOWN HEREON BETWEEN THE DESCRIBED THE MONUMENTS SHOWN HEREON.
- GRID DISTANCES ARE SHOWN, AS MEASURED IN THE FIELD, WITH TIES TO WELLS MEASURED PERPENDICULAR TO SECTION LINES.

NOTES:

- WEICHEL 2N-11HZ TO BE AT 466' FSL, 1735' FEL.
 BOTTOM HOLE AT 460' FNL & 2022' FEL.
 WEICHEL 27C-11HZ TO BE AT 486' FSL, 1713' FEL.
 BOTTOM HOLE AT 460' FNL & 1721' FEL.
 WEICHEL 27N-11HZ TO BE AT 506' FSL, 1691' FEL.
 BOTTOM HOLE AT 460' FNL & 1407' FEL.
 WEICHEL 15-14A TO BE AT 466' FSL, 1784' FEL.

PREPARED BY:

PFS

Petroleum Field Services, LLC
1801 W. 13th Ave.
Denver, CO 80204

KERR-MCGEE OIL & GAS ONSHORE LP

FIELD DATE: 10-14-11	PAD NAME: WEICHEL 3 PAD
DRAWING DATE: 10-24-11	SURFACE LOCATION: WELD COUNTY, COLORADO
BY: SMF	SW 1/4 SE 1/4, SEC. 14, T2N, R65W, 6TH P.M.

