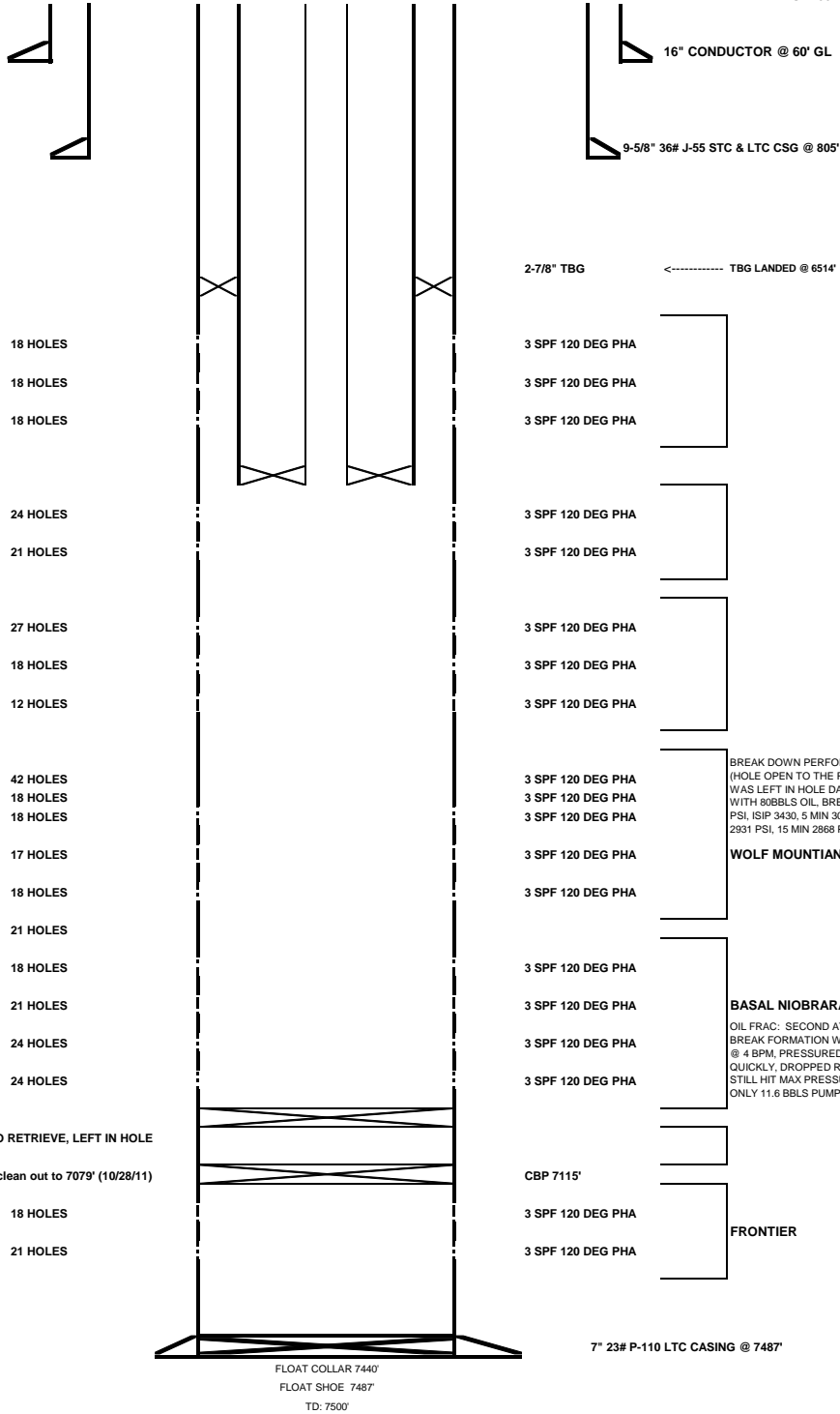


ENTEK ENERGY GRB LLC

Well Name:	Battle Mountain Federal 14-10L
AFE:	RDC1-033
DATE OF WBD:	01/25/12

KB: 18'
GL: 6676'

37.1 bbls/1000' with tbg in hole
39.5 bbls/1000' without tbg in hole



BREAK DOWN PERFORATIONS WITH 92
BBLs OIL, BREAK @ 3550 PSI, ISIP 2840, 5
MIN 2309, 10 MIN 2328 PSI, 15 MIN 2351
PSI

BREAK DOWN FORMATION WITH 85
BBLs OIL, BREAK @ 3508 PSI, ISIP 2711
PSI, 5 MIN 2557 PSI, 10 MIN 2551 PSI, 15
MIN 2548

BREAK DOWN FORMATION WITH 88
BBLs OIL, BREAK @ 5106 PSI, ISIP 4565
PSI, 5 MIN 2904 PSI, 10 MIN 2781 PSI, 15
MIN 2703 PSI

REPERF -->
ADDED AFTER FRAC
FRAC INTERVAL WITH:
556 BBLs TREATED FLUID
5000# 100 MESH SAND
19,880# 20/40 SAND
53 Tons CO2

INITIAL FRAC SCREENED OUT

ADDED LATER, ATTEMPT TO REBREAK WITH
OIL AND OTHER 3 SETS OF PERFORATIONS,
AGAIN WOULD NOT BREAK, PUMPED 12 BBLs
INTO FORMATION AND PRESSURED OUT @
5450 PSI

RBP SET @ 6996', UNABLE TO RETRIEVE, LEFT IN HOLE

clean out to 7079' (10/28/11)

FRAC INTERVAL WITH:
1216 BBLs TREATED FLUID
2500# 100 MESH SAND
59,000# 20/40 SAND

BREAK DOWN PERFORATIONS
(HOLE OPEN TO THE RBP THAT
WAS LEFT IN HOLE DAY BEFORE)
WITH 800BBLs OIL, BREAK @ 4458
PSI, ISIP 3430, 5 MIN 3024, 10 MIN
2931 PSI, 15 MIN 2868 PSI

WOLF MOUNTAIN BENCH

BASAL NIOBRARA BENCH
OIL FRAC: SECOND ATTEMPT
BREAK FORMATION WITH 4807 PSI,
@ 4 BPM, PRESSURED UP
QUICKLY, DROPPED RATE AND
STILL HIT MAX PRESSURE WITH
ONLY 11.6 BBLs PUMPED 11/20/11

FRONTIER