

ENSIGN

Directional

Well Name: SRC Margil 34TD

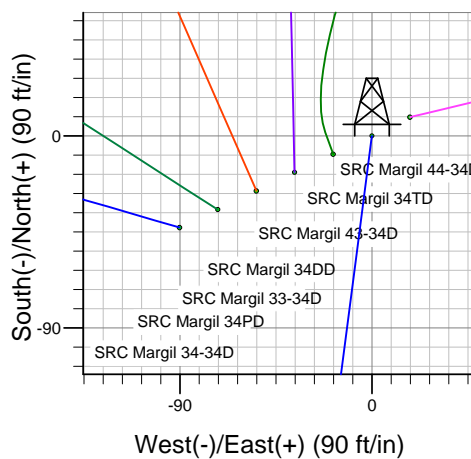
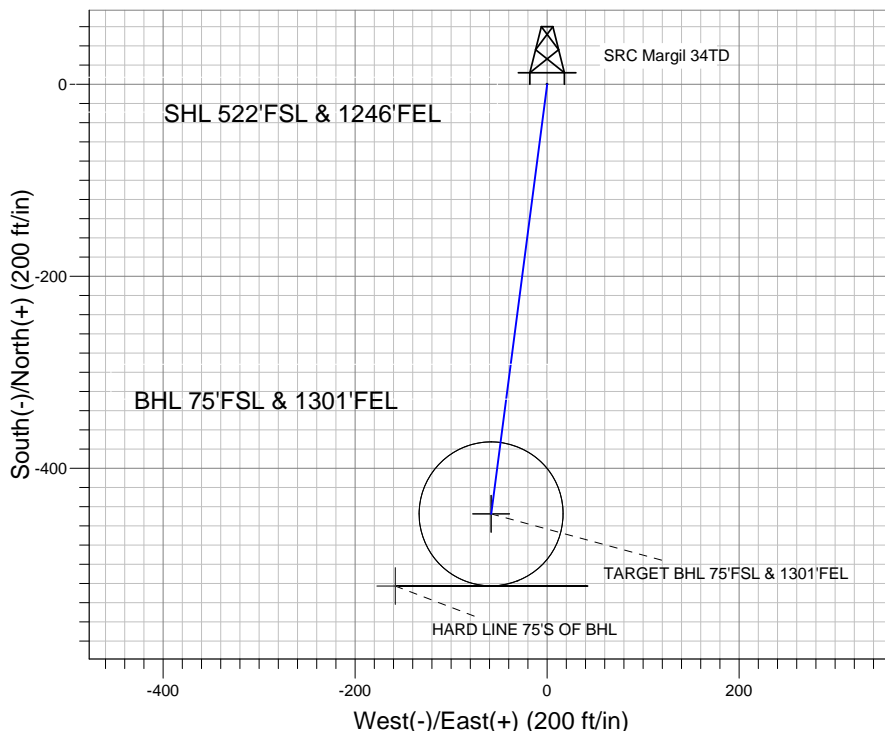
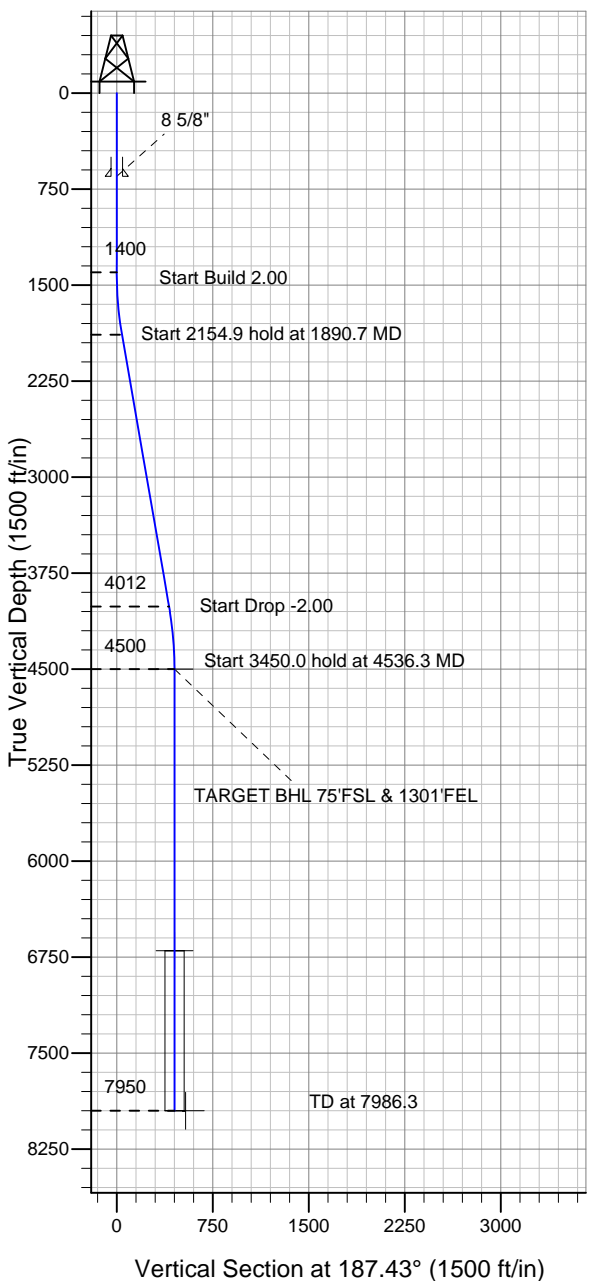
Surface Location: SRC Margil 34-34D Pad Sec.34-T4N-R68W
North American Datum 1983 US State Plane 1983 Colorado Northern Zone

Ground Elevation: 5091.0

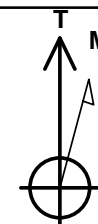
+N/-S	+E/-W	Northing	Easting	Latitude	Longitude	Slot
0.0	0.0	1339455.89	3143906.89	40.264057	-104.984329	

Original Well Elev WELL @ 5104.0ft (Original Well Elev)

Synergy Resources



SRC Margil 34-34D Pad Sec.34-T4N-R68W
SRC Margil 34TD
Plan #1 (12-28-11)
11:13, December 29 2011



Azimuths to True North
Magnetic North: 8.90°

Magnetic Field
Strength: 52977.4snT
Dip Angle: 66.89°
Date: 12/28/2011
Model: IGRF2010

WELLBORE TARGET DETAILS (LAT/LONG)

Name	TVD	+N/-S	+E/-W	Latitude	Longitude	Shape
TARGET BHL 75'FSL & 1301'FEL	4500.0	-447.4	-58.3	40.262829	-104.984538	Point
TARGET CIRCLE 75'FSL & 1301'FEL	6700.0	-447.4	-58.3	40.262829	-104.984538	Circle (Radius: 75.0)
HARD LINE 75'S OF BHL	7950.0	-522.4	-158.3	40.262623	-104.984896	Polygon

SECTION DETAILS

Sec	MD	Inc	Azi	TVD	+N/-S	+E/-W	DLeg	TFace	VSec	Target
1	0.0	0.00	0.00	0.0	0.0	0.0	0.00	0.00	0.0	
2	1400.0	0.00	0.00	1400.0	0.0	0.0	0.00	0.00	0.0	
3	1890.7	9.81	187.43	1888.3	-41.6	-5.4	2.00	187.43	41.9	
4	4045.6	9.81	187.43	4011.7	-405.8	-52.9	0.00	0.00	409.2	
5	4536.3	0.00	0.00	4500.0	-447.4	-58.3	2.00	180.00	451.1	TARGET BHL 75'FSL & 1301'FEL
6	7986.3	0.00	0.00	7950.0	-447.4	-58.3	0.00	0.00	451.1	



Directional

Synergy Resources

SEC.34-T4N-R68W

SRC Margil 34-34D Pad Sec.34-T4N-R68W

SRC Margil 34TD

Wellbore #1

Plan: Plan #1 (12-28-11)

Standard Planning Report

29 December, 2011

Database:	Landmark	Local Co-ordinate Reference:	Well SRC Margil 34TD
Company:	Synergy Resources	TVD Reference:	WELL @ 5104.0ft (Original Well Elev)
Project:	SEC.34-T4N-R68W	MD Reference:	WELL @ 5104.0ft (Original Well Elev)
Site:	SRC Margil 34-34D Pad Sec.34-T4N-R68W	North Reference:	True
Well:	SRC Margil 34TD	Survey Calculation Method:	Minimum Curvature
Wellbore:	Wellbore #1		
Design:	Plan #1 (12-28-11)		

Project	SEC.34-T4N-R68W, Weld County, Colorado		
Map System:	US State Plane 1983	System Datum:	Mean Sea Level
Geo Datum:	North American Datum 1983		Using Well Reference Point
Map Zone:	Colorado Northern Zone		Using geodetic scale factor

Site						SRC Margil 34-34D Pad Sec.34-T4N-R68W											
Site Position:						Northing:			1,339,412.39ft			Latitude:			40.263939		
From:			Lat/Long			Easting:			3,143,817.01ft			Longitude:			-104.984652		
Position Uncertainty:			0.0 ft			Slot Radius:			"			Grid Convergence:			0.33 °		

Well	SRC Margil 34TD					
Well Position	+N/-S	43.0 ft	Northing:	1,339,455.89 ft	Latitude:	40.264057
	+E/-W	90.1 ft	Easting:	3,143,906.89 ft	Longitude:	-104.984329
Position Uncertainty		0.0 ft	Wellhead Elevation:	ft	Ground Level:	5,091.0 ft

Wellbore	Wellbore #1				
Magnetics	Model Name	Sample Date	Declination (°)	Dip Angle (°)	Field Strength (nT)
	IGRF2010	12/28/2011	8.90	66.89	52,977

Design	Plan #1 (12-28-11)			
Audit Notes:				
Version:	Phase:	PROTOTYPE	Tie On Depth:	0.0
Vertical Section:	Depth From (TVD) (ft)	+N/-S (ft)	+E/-W (ft)	Direction (°)
	0.0	0.0	0.0	187.43

Plan Sections										
Measured Depth (ft)	Inclination (°)	Azimuth (°)	Vertical Depth (ft)	+N/-S (ft)	+E/-W (ft)	Dogleg Rate (°/100ft)	Build Rate (°/100ft)	Turn Rate (°/100ft)	TFO (°)	Target
0.0	0.00	0.00	0.0	0.0	0.0	0.00	0.00	0.00	0.00	
1,400.0	0.00	0.00	1,400.0	0.0	0.0	0.00	0.00	0.00	0.00	
1,890.7	9.81	187.43	1,888.3	-41.6	-5.4	2.00	2.00	0.00	187.43	
4,045.6	9.81	187.43	4,011.7	-405.8	-52.9	0.00	0.00	0.00	0.00	
4,536.3	0.00	0.00	4,500.0	-447.4	-58.3	2.00	-2.00	0.00	180.00	TARGET BHL 75'F!
7,986.3	0.00	0.00	7,950.0	-447.4	-58.3	0.00	0.00	0.00	0.00	

Database:	Landmark	Local Co-ordinate Reference:	Well SRC Margil 34TD
Company:	Synergy Resources	TVD Reference:	WELL @ 5104.0ft (Original Well Elev)
Project:	SEC.34-T4N-R68W	MD Reference:	WELL @ 5104.0ft (Original Well Elev)
Site:	SRC Margil 34-34D Pad Sec.34-T4N-R68W	North Reference:	True
Well:	SRC Margil 34TD	Survey Calculation Method:	Minimum Curvature
Wellbore:	Wellbore #1		
Design:	Plan #1 (12-28-11)		

Planned Survey									
Measured Depth (ft)	Inclination (°)	Azimuth (°)	Vertical Depth (ft)	+N/-S (ft)	+E/-W (ft)	Vertical Section (ft)	Dogleg Rate (°/100ft)	Build Rate (°/100ft)	Turn Rate (°/100ft)
0.0	0.00	0.00	0.0	0.0	0.0	0.0	0.00	0.00	0.00
40.0	0.00	0.00	40.0	0.0	0.0	0.0	0.00	0.00	0.00
80.0	0.00	0.00	80.0	0.0	0.0	0.0	0.00	0.00	0.00
120.0	0.00	0.00	120.0	0.0	0.0	0.0	0.00	0.00	0.00
160.0	0.00	0.00	160.0	0.0	0.0	0.0	0.00	0.00	0.00
200.0	0.00	0.00	200.0	0.0	0.0	0.0	0.00	0.00	0.00
240.0	0.00	0.00	240.0	0.0	0.0	0.0	0.00	0.00	0.00
280.0	0.00	0.00	280.0	0.0	0.0	0.0	0.00	0.00	0.00
320.0	0.00	0.00	320.0	0.0	0.0	0.0	0.00	0.00	0.00
360.0	0.00	0.00	360.0	0.0	0.0	0.0	0.00	0.00	0.00
400.0	0.00	0.00	400.0	0.0	0.0	0.0	0.00	0.00	0.00
440.0	0.00	0.00	440.0	0.0	0.0	0.0	0.00	0.00	0.00
480.0	0.00	0.00	480.0	0.0	0.0	0.0	0.00	0.00	0.00
520.0	0.00	0.00	520.0	0.0	0.0	0.0	0.00	0.00	0.00
560.0	0.00	0.00	560.0	0.0	0.0	0.0	0.00	0.00	0.00
600.0	0.00	0.00	600.0	0.0	0.0	0.0	0.00	0.00	0.00
640.0	0.00	0.00	640.0	0.0	0.0	0.0	0.00	0.00	0.00
650.0	0.00	0.00	650.0	0.0	0.0	0.0	0.00	0.00	0.00
8 5/8"									
680.0	0.00	0.00	680.0	0.0	0.0	0.0	0.00	0.00	0.00
720.0	0.00	0.00	720.0	0.0	0.0	0.0	0.00	0.00	0.00
760.0	0.00	0.00	760.0	0.0	0.0	0.0	0.00	0.00	0.00
800.0	0.00	0.00	800.0	0.0	0.0	0.0	0.00	0.00	0.00
840.0	0.00	0.00	840.0	0.0	0.0	0.0	0.00	0.00	0.00
880.0	0.00	0.00	880.0	0.0	0.0	0.0	0.00	0.00	0.00
920.0	0.00	0.00	920.0	0.0	0.0	0.0	0.00	0.00	0.00
960.0	0.00	0.00	960.0	0.0	0.0	0.0	0.00	0.00	0.00
1,000.0	0.00	0.00	1,000.0	0.0	0.0	0.0	0.00	0.00	0.00
1,040.0	0.00	0.00	1,040.0	0.0	0.0	0.0	0.00	0.00	0.00
1,080.0	0.00	0.00	1,080.0	0.0	0.0	0.0	0.00	0.00	0.00
1,120.0	0.00	0.00	1,120.0	0.0	0.0	0.0	0.00	0.00	0.00
1,160.0	0.00	0.00	1,160.0	0.0	0.0	0.0	0.00	0.00	0.00
1,200.0	0.00	0.00	1,200.0	0.0	0.0	0.0	0.00	0.00	0.00
1,240.0	0.00	0.00	1,240.0	0.0	0.0	0.0	0.00	0.00	0.00
1,280.0	0.00	0.00	1,280.0	0.0	0.0	0.0	0.00	0.00	0.00
1,320.0	0.00	0.00	1,320.0	0.0	0.0	0.0	0.00	0.00	0.00
1,360.0	0.00	0.00	1,360.0	0.0	0.0	0.0	0.00	0.00	0.00
1,400.0	0.00	0.00	1,400.0	0.0	0.0	0.0	0.00	0.00	0.00
1,440.0	0.80	187.43	1,440.0	-0.3	0.0	0.3	2.00	2.00	0.00
1,480.0	1.60	187.43	1,480.0	-1.1	-0.1	1.1	2.00	2.00	0.00
1,520.0	2.40	187.43	1,520.0	-2.5	-0.3	2.5	2.00	2.00	0.00
1,560.0	3.20	187.43	1,559.9	-4.4	-0.6	4.5	2.00	2.00	0.00
1,600.0	4.00	187.43	1,599.8	-6.9	-0.9	7.0	2.00	2.00	0.00
1,640.0	4.80	187.43	1,639.7	-10.0	-1.3	10.0	2.00	2.00	0.00
1,680.0	5.60	187.43	1,679.6	-13.6	-1.8	13.7	2.00	2.00	0.00
1,720.0	6.40	187.43	1,719.3	-17.7	-2.3	17.9	2.00	2.00	0.00
1,760.0	7.20	187.43	1,759.1	-22.4	-2.9	22.6	2.00	2.00	0.00
1,800.0	8.00	187.43	1,798.7	-27.6	-3.6	27.9	2.00	2.00	0.00
1,840.0	8.80	187.43	1,838.3	-33.4	-4.4	33.7	2.00	2.00	0.00
1,880.0	9.60	187.43	1,877.8	-39.8	-5.2	40.1	2.00	2.00	0.00
1,890.7	9.81	187.43	1,888.3	-41.6	-5.4	41.9	2.00	2.00	0.00
1,920.0	9.81	187.43	1,917.2	-46.5	-6.1	46.9	0.00	0.00	0.00
1,960.0	9.81	187.43	1,956.6	-53.3	-6.9	53.7	0.00	0.00	0.00
2,000.0	9.81	187.43	1,996.0	-60.0	-7.8	60.6	0.00	0.00	0.00

Database:	Landmark	Local Co-ordinate Reference:	Well SRC Margil 34TD
Company:	Synergy Resources	TVD Reference:	WELL @ 5104.0ft (Original Well Elev)
Project:	SEC.34-T4N-R68W	MD Reference:	WELL @ 5104.0ft (Original Well Elev)
Site:	SRC Margil 34-34D Pad Sec.34-T4N-R68W	North Reference:	True
Well:	SRC Margil 34TD	Survey Calculation Method:	Minimum Curvature
Wellbore:	Wellbore #1		
Design:	Plan #1 (12-28-11)		

Planned Survey									
Measured Depth (ft)	Inclination (°)	Azimuth (°)	Vertical Depth (ft)	+N/-S (ft)	+E/-W (ft)	Vertical Section (ft)	Dogleg Rate (°/100ft)	Build Rate (°/100ft)	Turn Rate (°/100ft)
2,040.0	9.81	187.43	2,035.4	-66.8	-8.7	67.4	0.00	0.00	0.00
2,080.0	9.81	187.43	2,074.8	-73.6	-9.6	74.2	0.00	0.00	0.00
2,120.0	9.81	187.43	2,114.2	-80.3	-10.5	81.0	0.00	0.00	0.00
2,160.0	9.81	187.43	2,153.7	-87.1	-11.4	87.8	0.00	0.00	0.00
2,200.0	9.81	187.43	2,193.1	-93.8	-12.2	94.6	0.00	0.00	0.00
2,240.0	9.81	187.43	2,232.5	-100.6	-13.1	101.5	0.00	0.00	0.00
2,280.0	9.81	187.43	2,271.9	-107.4	-14.0	108.3	0.00	0.00	0.00
2,320.0	9.81	187.43	2,311.3	-114.1	-14.9	115.1	0.00	0.00	0.00
2,360.0	9.81	187.43	2,350.7	-120.9	-15.8	121.9	0.00	0.00	0.00
2,400.0	9.81	187.43	2,390.2	-127.7	-16.6	128.7	0.00	0.00	0.00
2,440.0	9.81	187.43	2,429.6	-134.4	-17.5	135.5	0.00	0.00	0.00
2,480.0	9.81	187.43	2,469.0	-141.2	-18.4	142.4	0.00	0.00	0.00
2,520.0	9.81	187.43	2,508.4	-147.9	-19.3	149.2	0.00	0.00	0.00
2,560.0	9.81	187.43	2,547.8	-154.7	-20.2	156.0	0.00	0.00	0.00
2,600.0	9.81	187.43	2,587.2	-161.5	-21.1	162.8	0.00	0.00	0.00
2,640.0	9.81	187.43	2,626.6	-168.2	-21.9	169.6	0.00	0.00	0.00
2,680.0	9.81	187.43	2,666.1	-175.0	-22.8	176.5	0.00	0.00	0.00
2,720.0	9.81	187.43	2,705.5	-181.7	-23.7	183.3	0.00	0.00	0.00
2,760.0	9.81	187.43	2,744.9	-188.5	-24.6	190.1	0.00	0.00	0.00
2,800.0	9.81	187.43	2,784.3	-195.3	-25.5	196.9	0.00	0.00	0.00
2,840.0	9.81	187.43	2,823.7	-202.0	-26.3	203.7	0.00	0.00	0.00
2,880.0	9.81	187.43	2,863.1	-208.8	-27.2	210.5	0.00	0.00	0.00
2,920.0	9.81	187.43	2,902.5	-215.5	-28.1	217.4	0.00	0.00	0.00
2,960.0	9.81	187.43	2,942.0	-222.3	-29.0	224.2	0.00	0.00	0.00
3,000.0	9.81	187.43	2,981.4	-229.1	-29.9	231.0	0.00	0.00	0.00
3,040.0	9.81	187.43	3,020.8	-235.8	-30.7	237.8	0.00	0.00	0.00
3,080.0	9.81	187.43	3,060.2	-242.6	-31.6	244.6	0.00	0.00	0.00
3,120.0	9.81	187.43	3,099.6	-249.3	-32.5	251.5	0.00	0.00	0.00
3,160.0	9.81	187.43	3,139.0	-256.1	-33.4	258.3	0.00	0.00	0.00
3,200.0	9.81	187.43	3,178.4	-262.9	-34.3	265.1	0.00	0.00	0.00
3,240.0	9.81	187.43	3,217.9	-269.6	-35.2	271.9	0.00	0.00	0.00
3,280.0	9.81	187.43	3,257.3	-276.4	-36.0	278.7	0.00	0.00	0.00
3,320.0	9.81	187.43	3,296.7	-283.1	-36.9	285.5	0.00	0.00	0.00
3,360.0	9.81	187.43	3,336.1	-289.9	-37.8	292.4	0.00	0.00	0.00
3,400.0	9.81	187.43	3,375.5	-296.7	-38.7	299.2	0.00	0.00	0.00
3,440.0	9.81	187.43	3,414.9	-303.4	-39.6	306.0	0.00	0.00	0.00
3,480.0	9.81	187.43	3,454.3	-310.2	-40.4	312.8	0.00	0.00	0.00
3,520.0	9.81	187.43	3,493.8	-316.9	-41.3	319.6	0.00	0.00	0.00
3,560.0	9.81	187.43	3,533.2	-323.7	-42.2	326.4	0.00	0.00	0.00
3,600.0	9.81	187.43	3,572.6	-330.5	-43.1	333.3	0.00	0.00	0.00
3,640.0	9.81	187.43	3,612.0	-337.2	-44.0	340.1	0.00	0.00	0.00
3,680.0	9.81	187.43	3,651.4	-344.0	-44.9	346.9	0.00	0.00	0.00
3,720.0	9.81	187.43	3,690.8	-350.8	-45.7	353.7	0.00	0.00	0.00
3,760.0	9.81	187.43	3,730.3	-357.5	-46.6	360.5	0.00	0.00	0.00
3,800.0	9.81	187.43	3,769.7	-364.3	-47.5	367.4	0.00	0.00	0.00
3,840.0	9.81	187.43	3,809.1	-371.0	-48.4	374.2	0.00	0.00	0.00
3,880.0	9.81	187.43	3,848.5	-377.8	-49.3	381.0	0.00	0.00	0.00
3,920.0	9.81	187.43	3,887.9	-384.6	-50.1	387.8	0.00	0.00	0.00
3,960.0	9.81	187.43	3,927.3	-391.3	-51.0	394.6	0.00	0.00	0.00
4,000.0	9.81	187.43	3,966.7	-398.1	-51.9	401.4	0.00	0.00	0.00
4,040.0	9.81	187.43	4,006.2	-404.8	-52.8	408.3	0.00	0.00	0.00
4,045.6	9.81	187.43	4,011.7	-405.8	-52.9	409.2	0.00	0.00	0.00
4,080.0	9.13	187.43	4,045.6	-411.4	-53.6	414.9	2.00	-2.00	0.00
4,120.0	8.33	187.43	4,085.1	-417.4	-54.4	420.9	2.00	-2.00	0.00

Database:	Landmark	Local Co-ordinate Reference:	Well SRC Margil 34TD
Company:	Synergy Resources	TVD Reference:	WELL @ 5104.0ft (Original Well Elev)
Project:	SEC.34-T4N-R68W	MD Reference:	WELL @ 5104.0ft (Original Well Elev)
Site:	SRC Margil 34-34D Pad Sec.34-T4N-R68W	North Reference:	True
Well:	SRC Margil 34TD	Survey Calculation Method:	Minimum Curvature
Wellbore:	Wellbore #1		
Design:	Plan #1 (12-28-11)		

Planned Survey									
Measured Depth (ft)	Inclination (°)	Azimuth (°)	Vertical Depth (ft)	+N/-S (ft)	+E/-W (ft)	Vertical Section (ft)	Dogleg Rate (°/100ft)	Build Rate (°/100ft)	Turn Rate (°/100ft)
4,160.0	7.53	187.43	4,124.8	-422.9	-55.1	426.5	2.00	-2.00	0.00
4,200.0	6.73	187.43	4,164.4	-427.8	-55.8	431.4	2.00	-2.00	0.00
4,240.0	5.93	187.43	4,204.2	-432.2	-56.3	435.8	2.00	-2.00	0.00
4,280.0	5.13	187.43	4,244.0	-436.0	-56.8	439.7	2.00	-2.00	0.00
4,320.0	4.33	187.43	4,283.9	-439.3	-57.3	443.0	2.00	-2.00	0.00
4,360.0	3.53	187.43	4,323.8	-442.0	-57.6	445.7	2.00	-2.00	0.00
4,400.0	2.73	187.43	4,363.7	-444.1	-57.9	447.9	2.00	-2.00	0.00
4,440.0	1.93	187.43	4,403.7	-445.8	-58.1	449.5	2.00	-2.00	0.00
4,480.0	1.13	187.43	4,443.7	-446.8	-58.3	450.6	2.00	-2.00	0.00
4,520.0	0.33	187.43	4,483.7	-447.3	-58.3	451.1	2.00	-2.00	0.00
4,536.3	0.00	0.00	4,500.0	-447.4	-58.3	451.1	2.00	-2.00	0.00
TARGET BHL 75'FSL & 1301'FEL									
4,560.0	0.00	0.00	4,523.7	-447.4	-58.3	451.1	0.00	0.00	0.00
4,600.0	0.00	0.00	4,563.7	-447.4	-58.3	451.1	0.00	0.00	0.00
4,640.0	0.00	0.00	4,603.7	-447.4	-58.3	451.1	0.00	0.00	0.00
4,680.0	0.00	0.00	4,643.7	-447.4	-58.3	451.1	0.00	0.00	0.00
4,720.0	0.00	0.00	4,683.7	-447.4	-58.3	451.1	0.00	0.00	0.00
4,760.0	0.00	0.00	4,723.7	-447.4	-58.3	451.1	0.00	0.00	0.00
4,800.0	0.00	0.00	4,763.7	-447.4	-58.3	451.1	0.00	0.00	0.00
4,840.0	0.00	0.00	4,803.7	-447.4	-58.3	451.1	0.00	0.00	0.00
4,880.0	0.00	0.00	4,843.7	-447.4	-58.3	451.1	0.00	0.00	0.00
4,920.0	0.00	0.00	4,883.7	-447.4	-58.3	451.1	0.00	0.00	0.00
4,960.0	0.00	0.00	4,923.7	-447.4	-58.3	451.1	0.00	0.00	0.00
5,000.0	0.00	0.00	4,963.7	-447.4	-58.3	451.1	0.00	0.00	0.00
5,040.0	0.00	0.00	5,003.7	-447.4	-58.3	451.1	0.00	0.00	0.00
5,080.0	0.00	0.00	5,043.7	-447.4	-58.3	451.1	0.00	0.00	0.00
5,120.0	0.00	0.00	5,083.7	-447.4	-58.3	451.1	0.00	0.00	0.00
5,160.0	0.00	0.00	5,123.7	-447.4	-58.3	451.1	0.00	0.00	0.00
5,200.0	0.00	0.00	5,163.7	-447.4	-58.3	451.1	0.00	0.00	0.00
5,240.0	0.00	0.00	5,203.7	-447.4	-58.3	451.1	0.00	0.00	0.00
5,280.0	0.00	0.00	5,243.7	-447.4	-58.3	451.1	0.00	0.00	0.00
5,320.0	0.00	0.00	5,283.7	-447.4	-58.3	451.1	0.00	0.00	0.00
5,360.0	0.00	0.00	5,323.7	-447.4	-58.3	451.1	0.00	0.00	0.00
5,400.0	0.00	0.00	5,363.7	-447.4	-58.3	451.1	0.00	0.00	0.00
5,440.0	0.00	0.00	5,403.7	-447.4	-58.3	451.1	0.00	0.00	0.00
5,480.0	0.00	0.00	5,443.7	-447.4	-58.3	451.1	0.00	0.00	0.00
5,520.0	0.00	0.00	5,483.7	-447.4	-58.3	451.1	0.00	0.00	0.00
5,560.0	0.00	0.00	5,523.7	-447.4	-58.3	451.1	0.00	0.00	0.00
5,600.0	0.00	0.00	5,563.7	-447.4	-58.3	451.1	0.00	0.00	0.00
5,640.0	0.00	0.00	5,603.7	-447.4	-58.3	451.1	0.00	0.00	0.00
5,680.0	0.00	0.00	5,643.7	-447.4	-58.3	451.1	0.00	0.00	0.00
5,720.0	0.00	0.00	5,683.7	-447.4	-58.3	451.1	0.00	0.00	0.00
5,760.0	0.00	0.00	5,723.7	-447.4	-58.3	451.1	0.00	0.00	0.00
5,800.0	0.00	0.00	5,763.7	-447.4	-58.3	451.1	0.00	0.00	0.00
5,840.0	0.00	0.00	5,803.7	-447.4	-58.3	451.1	0.00	0.00	0.00
5,880.0	0.00	0.00	5,843.7	-447.4	-58.3	451.1	0.00	0.00	0.00
5,920.0	0.00	0.00	5,883.7	-447.4	-58.3	451.1	0.00	0.00	0.00
5,960.0	0.00	0.00	5,923.7	-447.4	-58.3	451.1	0.00	0.00	0.00
6,000.0	0.00	0.00	5,963.7	-447.4	-58.3	451.1	0.00	0.00	0.00
6,040.0	0.00	0.00	6,003.7	-447.4	-58.3	451.1	0.00	0.00	0.00
6,080.0	0.00	0.00	6,043.7	-447.4	-58.3	451.1	0.00	0.00	0.00
6,120.0	0.00	0.00	6,083.7	-447.4	-58.3	451.1	0.00	0.00	0.00
6,160.0	0.00	0.00	6,123.7	-447.4	-58.3	451.1	0.00	0.00	0.00
6,200.0	0.00	0.00	6,163.7	-447.4	-58.3	451.1	0.00	0.00	0.00

Database:	Landmark	Local Co-ordinate Reference:	Well SRC Margil 34TD
Company:	Synergy Resources	TVD Reference:	WELL @ 5104.0ft (Original Well Elev)
Project:	SEC.34-T4N-R68W	MD Reference:	WELL @ 5104.0ft (Original Well Elev)
Site:	SRC Margil 34-34D Pad Sec.34-T4N-R68W	North Reference:	True
Well:	SRC Margil 34TD	Survey Calculation Method:	Minimum Curvature
Wellbore:	Wellbore #1		
Design:	Plan #1 (12-28-11)		

Planned Survey									
Measured Depth (ft)	Inclination (°)	Azimuth (°)	Vertical Depth (ft)	+N/-S (ft)	+E/-W (ft)	Vertical Section (ft)	Dogleg Rate (°/100ft)	Build Rate (°/100ft)	Turn Rate (°/100ft)
6,240.0	0.00	0.00	6,203.7	-447.4	-58.3	451.1	0.00	0.00	0.00
6,280.0	0.00	0.00	6,243.7	-447.4	-58.3	451.1	0.00	0.00	0.00
6,320.0	0.00	0.00	6,283.7	-447.4	-58.3	451.1	0.00	0.00	0.00
6,360.0	0.00	0.00	6,323.7	-447.4	-58.3	451.1	0.00	0.00	0.00
6,400.0	0.00	0.00	6,363.7	-447.4	-58.3	451.1	0.00	0.00	0.00
6,440.0	0.00	0.00	6,403.7	-447.4	-58.3	451.1	0.00	0.00	0.00
6,480.0	0.00	0.00	6,443.7	-447.4	-58.3	451.1	0.00	0.00	0.00
6,520.0	0.00	0.00	6,483.7	-447.4	-58.3	451.1	0.00	0.00	0.00
6,560.0	0.00	0.00	6,523.7	-447.4	-58.3	451.1	0.00	0.00	0.00
6,600.0	0.00	0.00	6,563.7	-447.4	-58.3	451.1	0.00	0.00	0.00
6,640.0	0.00	0.00	6,603.7	-447.4	-58.3	451.1	0.00	0.00	0.00
6,680.0	0.00	0.00	6,643.7	-447.4	-58.3	451.1	0.00	0.00	0.00
6,720.0	0.00	0.00	6,683.7	-447.4	-58.3	451.1	0.00	0.00	0.00
6,736.3	0.00	0.00	6,700.0	-447.4	-58.3	451.1	0.00	0.00	0.00
TARGET CIRCLE 75'FSL & 1301'FEL									
6,760.0	0.00	0.00	6,723.7	-447.4	-58.3	451.1	0.00	0.00	0.00
6,800.0	0.00	0.00	6,763.7	-447.4	-58.3	451.1	0.00	0.00	0.00
6,840.0	0.00	0.00	6,803.7	-447.4	-58.3	451.1	0.00	0.00	0.00
6,880.0	0.00	0.00	6,843.7	-447.4	-58.3	451.1	0.00	0.00	0.00
6,920.0	0.00	0.00	6,883.7	-447.4	-58.3	451.1	0.00	0.00	0.00
6,960.0	0.00	0.00	6,923.7	-447.4	-58.3	451.1	0.00	0.00	0.00
7,000.0	0.00	0.00	6,963.7	-447.4	-58.3	451.1	0.00	0.00	0.00
7,040.0	0.00	0.00	7,003.7	-447.4	-58.3	451.1	0.00	0.00	0.00
7,080.0	0.00	0.00	7,043.7	-447.4	-58.3	451.1	0.00	0.00	0.00
7,120.0	0.00	0.00	7,083.7	-447.4	-58.3	451.1	0.00	0.00	0.00
7,160.0	0.00	0.00	7,123.7	-447.4	-58.3	451.1	0.00	0.00	0.00
7,200.0	0.00	0.00	7,163.7	-447.4	-58.3	451.1	0.00	0.00	0.00
7,240.0	0.00	0.00	7,203.7	-447.4	-58.3	451.1	0.00	0.00	0.00
7,280.0	0.00	0.00	7,243.7	-447.4	-58.3	451.1	0.00	0.00	0.00
7,320.0	0.00	0.00	7,283.7	-447.4	-58.3	451.1	0.00	0.00	0.00
7,360.0	0.00	0.00	7,323.7	-447.4	-58.3	451.1	0.00	0.00	0.00
7,400.0	0.00	0.00	7,363.7	-447.4	-58.3	451.1	0.00	0.00	0.00
7,440.0	0.00	0.00	7,403.7	-447.4	-58.3	451.1	0.00	0.00	0.00
7,480.0	0.00	0.00	7,443.7	-447.4	-58.3	451.1	0.00	0.00	0.00
7,520.0	0.00	0.00	7,483.7	-447.4	-58.3	451.1	0.00	0.00	0.00
7,560.0	0.00	0.00	7,523.7	-447.4	-58.3	451.1	0.00	0.00	0.00
7,600.0	0.00	0.00	7,563.7	-447.4	-58.3	451.1	0.00	0.00	0.00
7,640.0	0.00	0.00	7,603.7	-447.4	-58.3	451.1	0.00	0.00	0.00
7,680.0	0.00	0.00	7,643.7	-447.4	-58.3	451.1	0.00	0.00	0.00
7,720.0	0.00	0.00	7,683.7	-447.4	-58.3	451.1	0.00	0.00	0.00
7,760.0	0.00	0.00	7,723.7	-447.4	-58.3	451.1	0.00	0.00	0.00
7,800.0	0.00	0.00	7,763.7	-447.4	-58.3	451.1	0.00	0.00	0.00
7,840.0	0.00	0.00	7,803.7	-447.4	-58.3	451.1	0.00	0.00	0.00
7,880.0	0.00	0.00	7,843.7	-447.4	-58.3	451.1	0.00	0.00	0.00
7,920.0	0.00	0.00	7,883.7	-447.4	-58.3	451.1	0.00	0.00	0.00
7,960.0	0.00	0.00	7,923.7	-447.4	-58.3	451.1	0.00	0.00	0.00
7,986.3	0.00	0.00	7,950.0	-447.4	-58.3	451.1	0.00	0.00	0.00
HARD LINE 75'S OF BHL									

Database:	Landmark	Local Co-ordinate Reference:	Well SRC Margil 34TD
Company:	Synergy Resources	TVD Reference:	WELL @ 5104.0ft (Original Well Elev)
Project:	SEC.34-T4N-R68W	MD Reference:	WELL @ 5104.0ft (Original Well Elev)
Site:	SRC Margil 34-34D Pad Sec.34-T4N-R68W	North Reference:	True
Well:	SRC Margil 34TD	Survey Calculation Method:	Minimum Curvature
Wellbore:	Wellbore #1		
Design:	Plan #1 (12-28-11)		

Casing Points					
Measured Depth (ft)	Vertical Depth (ft)		Name	Casing Diameter (")	Hole Diameter (")
650.0	650.0	8 5/8"		8-5/8	12-1/4



Directional

Synergy Resources

SEC.34-T4N-R68W

SRC Margil 34-34D Pad Sec.34-T4N-R68W

SRC Margil 34TD

Wellbore #1

Plan #1 (12-28-11)

Anticollision Report

29 December, 2011

Company:	Synergy Resources	Local Co-ordinate Reference:	Well SRC Margil 34TD
Project:	SEC.34-T4N-R68W	TVD Reference:	WELL @ 5104.0ft (Original Well Elev)
Reference Site:	SRC Margil 34-34D Pad Sec.34-T4N-R68W	MD Reference:	WELL @ 5104.0ft (Original Well Elev)
Site Error:	0.0ft	North Reference:	True
Reference Well:	SRC Margil 34TD	Survey Calculation Method:	Minimum Curvature
Well Error:	0.0ft	Output errors are at	2.00 sigma
Reference Wellbore	Wellbore #1	Database:	Landmark
Reference Design:	Plan #1 (12-28-11)	Offset TVD Reference:	Offset Datum

Offset Design												Offset Site Error:	0.0ft
Survey Program: 0-MWD												Offset Well Error:	0.0ft
Reference		Offset		Semi Major Axis			Distance						Warning
Measured Depth (ft)	Vertical Depth (ft)	Measured Depth (ft)	Vertical Depth (ft)	Reference (ft)	Offset (ft)	Highside Toolface (°)	Offset Wellbore Centre +N/-S (ft)	+E/-W (ft)	Between Centres (ft)	Between Ellipses (ft)	Minimum Separation (ft)	Separation Factor	
2,100.0	2,094.5	1,993.2	1,933.6	4.5	8.7	-171.11	377.3	117.5	498.5	489.3	9.23	53.984	
2,200.0	2,193.1	2,081.1	2,016.7	4.8	9.3	-170.92	403.5	129.0	546.3	536.6	9.69	56.392	
2,300.0	2,291.6	2,168.9	2,099.7	5.2	9.8	-170.76	429.7	140.6	594.1	583.9	10.15	58.550	
2,400.0	2,390.2	2,256.7	2,182.7	5.5	10.4	-170.62	455.9	152.1	641.9	631.3	10.61	60.491	
2,500.0	2,488.7	2,344.6	2,265.8	5.8	10.9	-170.51	482.1	163.6	689.7	678.6	11.08	62.242	
2,600.0	2,587.2	2,432.4	2,348.8	6.1	11.5	-170.41	508.3	175.1	737.4	725.9	11.55	63.828	
2,700.0	2,685.8	2,520.2	2,431.9	6.5	12.1	-170.32	534.4	186.7	785.2	773.2	12.03	65.270	
2,800.0	2,784.3	2,608.1	2,514.9	6.8	12.6	-170.24	560.6	198.2	833.0	820.5	12.51	66.583	
2,900.0	2,882.8	2,695.9	2,598.0	7.2	13.2	-170.17	586.8	209.7	880.8	867.8	12.99	67.785	
3,000.0	2,981.4	2,783.7	2,681.0	7.5	13.8	-170.11	613.0	221.3	928.6	915.1	13.48	68.886	
3,100.0	3,079.9	2,871.6	2,764.1	7.9	14.3	-170.05	639.2	232.8	976.4	962.4	13.97	69.898	
3,200.0	3,178.4	2,959.4	2,847.1	8.3	14.9	-170.00	665.4	244.3	1,024.2	1,009.7	14.46	70.832	
3,300.0	3,277.0	3,047.2	2,930.2	8.6	15.5	-169.95	691.5	255.9	1,072.0	1,057.0	14.95	71.696	
3,400.0	3,375.5	3,135.1	3,013.2	9.0	16.0	-169.91	717.7	267.4	1,119.8	1,104.3	15.45	72.496	
3,500.0	3,474.1	3,222.9	3,096.2	9.4	16.6	-169.87	743.9	278.9	1,167.6	1,151.6	15.94	73.239	
3,600.0	3,572.6	3,310.8	3,179.3	9.8	17.2	-169.83	770.1	290.5	1,215.4	1,198.9	16.44	73.931	
3,700.0	3,671.1	3,398.6	3,262.3	10.1	17.7	-169.80	796.3	302.0	1,263.2	1,246.2	16.94	74.577	
3,800.0	3,769.7	3,486.4	3,345.4	10.5	18.3	-169.77	822.4	313.5	1,311.0	1,293.5	17.44	75.179	
3,900.0	3,868.2	3,574.3	3,428.4	10.9	18.9	-169.74	848.6	325.1	1,358.8	1,340.8	17.94	75.744	
4,000.0	3,966.7	3,662.1	3,511.5	11.3	19.4	-169.71	874.8	336.6	1,406.6	1,388.1	18.44	76.273	
4,045.6	4,011.7	3,702.2	3,549.4	11.5	19.7	-169.70	886.8	341.9	1,428.4	1,409.7	18.67	76.504	
4,100.0	4,065.4	3,750.2	3,594.7	11.6	20.0	-169.79	901.1	348.2	1,453.9	1,434.9	19.03	76.420	
4,200.0	4,164.4	3,839.6	3,679.3	11.9	20.6	-169.91	927.7	359.9	1,498.5	1,478.9	19.66	76.234	
4,300.0	4,263.9	3,930.6	3,765.3	12.1	21.2	-170.00	954.9	371.8	1,540.1	1,519.8	20.27	75.967	
4,400.0	4,363.7	4,022.9	3,852.6	12.3	21.8	-170.05	982.4	384.0	1,578.4	1,557.6	20.87	75.631	
4,500.0	4,463.7	4,116.5	3,941.1	12.5	22.4	-170.06	1,010.3	396.2	1,613.6	1,592.1	21.45	75.236	
4,536.3	4,500.0	4,150.7	3,973.5	12.6	22.6	17.37	1,020.5	400.7	1,625.6	1,603.9	21.65	75.073	
4,600.0	4,563.7	4,210.9	4,030.4	12.7	23.0	17.45	1,038.4	408.6	1,646.2	1,624.2	21.96	74.956	
4,700.0	4,663.7	4,305.5	4,119.8	12.8	23.6	17.57	1,066.6	421.1	1,678.6	1,656.2	22.44	74.794	
4,800.0	4,763.7	4,400.0	4,209.2	13.0	24.2	17.69	1,094.8	433.5	1,711.0	1,688.1	22.93	74.634	
4,900.0	4,863.7	4,494.6	4,298.6	13.1	24.8	17.80	1,123.0	445.9	1,743.4	1,720.0	23.41	74.477	
5,000.0	4,963.7	4,589.1	4,388.0	13.3	25.4	17.91	1,151.2	458.3	1,775.8	1,751.9	23.89	74.323	
5,100.0	5,063.7	4,683.7	4,477.3	13.4	26.0	18.02	1,179.3	470.7	1,808.3	1,783.9	24.38	74.172	
5,200.0	5,163.7	4,778.2	4,566.7	13.6	26.6	18.12	1,207.5	483.1	1,840.7	1,815.8	24.87	74.024	
5,300.0	5,263.7	4,872.8	4,656.1	13.8	27.3	18.22	1,235.7	495.5	1,873.1	1,847.8	25.35	73.879	
5,400.0	5,363.7	4,967.3	4,745.5	13.9	27.9	18.31	1,263.9	508.0	1,905.6	1,879.7	25.84	73.736	
5,500.0	5,463.7	5,061.9	4,834.9	14.1	28.5	18.40	1,292.1	520.4	1,938.0	1,911.7	26.33	73.597	
5,600.0	5,563.7	5,156.4	4,924.3	14.2	29.1	18.49	1,320.2	532.8	1,970.4	1,943.6	26.82	73.460	
5,700.0	5,663.7	5,251.4	5,019.2	14.4	30.2	18.66	1,348.2	545.3	2,001.5	1,973.9	27.30	73.323	
5,800.0	5,763.7	5,346.9	5,114.0	14.6	31.4	18.84	1,376.6	558.7	2,033.1	2,005.5	27.79	73.186	
5,900.0	5,863.7	5,442.4	5,208.9	14.8	32.1	18.93	1,405.0	572.1	2,064.6	2,036.9	28.28	73.049	
6,000.0	5,963.7	5,537.9	5,303.9	14.9	32.7	19.02	1,433.2	585.5	2,096.1	2,068.9	28.77	72.912	
6,100.0	6,063.7	5,633.4	5,408.9	15.1	33.4	19.11	1,461.4	598.9	2,127.6	2,100.4	29.26	72.775	
6,200.0	6,163.7	5,728.9	5,503.9	15.3	34.1	19.20	1,489.6	612.3	2,159.1	2,131.9	29.75	72.638	
6,300.0	6,263.7	5,824.4	5,608.9	15.5	34.8	19.29	1,517.8	626.1	2,190.6	2,163.4	30.24	72.501	
6,400.0	6,363.7	5,919.9	5,703.9	15.6	35.5	19.38	1,546.0	639.5	2,222.1	2,194.9	30.73	72.364	
6,500.0	6,463.7	6,015.4	5,808.9	15.8	36.2	19.47	1,574.2	652.9	2,253.6	2,226.4	31.22	72.227	
6,600.0	6,563.7	6,110.9	5,903.9	16.0	36.9	19.56	1,602.4	666.3	2,285.1	2,257.9	31.71	72.090	
6,700.0	6,663.7	6,206.4	6,008.9	16.2	37.6	19.65	1,630.6	679.7	2,316.6	2,289.4	32.20	71.953	
6,800.0	6,763.7	6,301.9	6,103.9	16.3	38.3	19.74	1,658.8	693.1	2,348.1	2,320.9	32.69	71.816	
6,900.0	6,863.7	6,397.4	6,208.9	16.5	39.0	19.83	1,687.0	706.5	2,379.6	2,352.4	33.18	71.679	
7,000.0	6,963.7	6,492.9	6,303.9	16.7	39.7	19.92	1,715.2	719.9	2,411.1	2,383.9	33.67	71.542	

CC - Min centre to center distance or convergent point, SF - min separation factor, ES - min ellipse separation

Company:	Synergy Resources	Local Co-ordinate Reference:	Well SRC Margil 34TD
Project:	SEC.34-T4N-R68W	TVD Reference:	WELL @ 5104.0ft (Original Well Elev)
Reference Site:	SRC Margil 34-34D Pad Sec.34-T4N-R68W	MD Reference:	WELL @ 5104.0ft (Original Well Elev)
Site Error:	0.0ft	North Reference:	True
Reference Well:	SRC Margil 34TD	Survey Calculation Method:	Minimum Curvature
Well Error:	0.0ft	Output errors are at	2.00 sigma
Reference Wellbore	Wellbore #1	Database:	Landmark
Reference Design:	Plan #1 (12-28-11)	Offset TVD Reference:	Offset Datum

Offset Design												Offset Site Error:	0.0 ft
SRC Margil 34-34D Pad Sec.34-T4N-R68W - SRC Margil 43-34D - Wellbore #1 - Plan #1 (12-28-11)												Offset Well Error:	0.0 ft
Survey Program: 0-MWD													
Reference		Offset		Semi Major Axis			Distance						
Measured Depth (ft)	Vertical Depth (ft)	Measured Depth (ft)	Vertical Depth (ft)	Reference (ft)	Offset (ft)	Highside Toolface (°)	Offset Wellbore Centre +N/-S (ft)	+E/-W (ft)	Between Centres (ft)	Between Ellipses (ft)	Minimum Separation (ft)	Separation Factor	Warning
7,100.0	7,063.7	7,315.6	7,063.7	16.9	33.3	18.93	1,476.6	601.7	2,034.1	2,000.1	33.94	59.938	
7,200.0	7,163.7	7,415.6	7,163.7	17.1	33.4	18.93	1,476.6	601.7	2,034.1	1,999.7	34.32	59.265	
7,300.0	7,263.7	7,515.6	7,263.7	17.3	33.5	18.93	1,476.6	601.7	2,034.1	1,999.3	34.71	58.605	
7,400.0	7,363.7	7,615.6	7,363.7	17.5	33.6	18.93	1,476.6	601.7	2,034.1	1,999.0	35.10	57.957	
7,500.0	7,463.7	7,715.6	7,463.7	17.7	33.7	18.93	1,476.6	601.7	2,034.1	1,998.6	35.49	57.320	
7,600.0	7,563.7	7,815.6	7,563.7	17.8	33.8	18.93	1,476.6	601.7	2,034.1	1,998.2	35.88	56.696	
7,700.0	7,663.7	7,915.6	7,663.7	18.0	33.9	18.93	1,476.6	601.7	2,034.1	1,997.8	36.27	56.083	
7,800.0	7,763.7	8,015.6	7,763.7	18.2	34.0	18.93	1,476.6	601.7	2,034.1	1,997.4	36.66	55.481	
7,900.0	7,863.7	8,115.6	7,863.7	18.4	34.1	18.93	1,476.6	601.7	2,034.1	1,997.0	37.06	54.890	
7,986.3	7,950.0	8,201.9	7,950.0	18.6	34.2	18.93	1,476.6	601.7	2,034.1	1,996.7	37.40	54.389	

Company:	Synergy Resources	Local Co-ordinate Reference:	Well SRC Margil 34TD
Project:	SEC.34-T4N-R68W	TVD Reference:	WELL @ 5104.0ft (Original Well Elev)
Reference Site:	SRC Margil 34-34D Pad Sec.34-T4N-R68W	MD Reference:	WELL @ 5104.0ft (Original Well Elev)
Site Error:	0.0ft	North Reference:	True
Reference Well:	SRC Margil 34TD	Survey Calculation Method:	Minimum Curvature
Well Error:	0.0ft	Output errors are at	2.00 sigma
Reference Wellbore	Wellbore #1	Database:	Landmark
Reference Design:	Plan #1 (12-28-11)	Offset TVD Reference:	Offset Datum

Offset Design												Offset Site Error:	0.0ft
Survey Program: 0-MWD												Offset Well Error:	0.0ft
Reference		Offset		Semi Major Axis			Distance						Warning
Measured Depth (ft)	Vertical Depth (ft)	Measured Depth (ft)	Vertical Depth (ft)	Reference (ft)	Offset (ft)	Highside Toolface (°)	Offset Wellbore Centre +N/-S (ft)	+E/-W (ft)	Between Centres (ft)	Between Ellipses (ft)	Minimum Separation (ft)	Separation Factor	
0.0	0.0	0.0	0.0	0.0	0.0	63.92	8.7	17.9	19.9	19.9	0.00	N/A	
100.0	100.0	100.0	100.0	0.1	0.1	63.92	8.7	17.9	19.9	19.7	0.22	88.476	
200.0	200.0	200.0	200.0	0.3	0.3	63.92	8.7	17.9	19.9	19.2	0.67	29.492	
300.0	300.0	300.0	300.0	0.6	0.6	63.92	8.7	17.9	19.9	18.8	1.12	17.695	
400.0	400.0	400.0	400.0	0.8	0.8	63.92	8.7	17.9	19.9	18.3	1.57	12.639	
500.0	500.0	500.0	500.0	1.0	1.0	63.92	8.7	17.9	19.9	17.9	2.02	9.831	
600.0	600.0	600.0	600.0	1.2	1.2	63.92	8.7	17.9	19.9	17.4	2.47	8.043	
700.0	700.0	700.0	700.0	1.5	1.5	63.92	8.7	17.9	19.9	17.0	2.92	6.806	
800.0	800.0	800.0	800.0	1.7	1.7	63.92	8.7	17.9	19.9	16.5	3.37	5.898	
900.0	900.0	900.0	900.0	1.9	1.9	63.92	8.7	17.9	19.9	16.1	3.82	5.204 CC, ES	
1,000.0	1,000.0	999.3	999.3	2.1	2.1	64.91	9.1	19.5	21.6	17.3	4.26	5.067 SF	
1,100.0	1,100.0	1,098.3	1,098.2	2.4	2.3	67.13	10.3	24.5	26.7	22.0	4.69	5.687	
1,200.0	1,200.0	1,196.9	1,196.4	2.6	2.6	69.39	12.3	32.8	35.2	30.1	5.13	6.867	
1,300.0	1,300.0	1,294.8	1,293.5	2.8	2.8	71.17	15.1	44.3	47.2	41.6	5.57	8.469	
1,400.0	1,400.0	1,391.7	1,389.3	3.0	3.1	72.45	18.6	58.8	62.6	56.6	6.02	10.393	
1,500.0	1,500.0	1,489.6	1,485.6	3.2	3.4	-114.90	22.6	75.6	81.0	74.5	6.44	12.577	
1,600.0	1,599.8	1,587.5	1,582.0	3.4	3.7	-116.52	26.7	92.6	100.9	94.1	6.83	14.771	
1,700.0	1,699.5	1,685.0	1,677.9	3.6	4.0	-118.93	30.8	109.4	122.6	115.3	7.24	16.931	
1,800.0	1,798.7	1,781.9	1,773.3	3.8	4.4	-121.67	34.8	126.1	146.2	138.6	7.66	19.076	
1,890.7	1,888.3	1,869.2	1,859.2	4.0	4.7	-124.22	38.4	141.2	169.6	161.5	8.07	21.018	
1,900.0	1,897.5	1,878.1	1,868.0	4.0	4.7	-124.52	38.8	142.8	172.1	163.9	8.11	21.213	
2,000.0	1,996.0	1,974.0	1,962.3	4.3	5.1	-127.27	42.8	159.3	199.1	190.5	8.59	23.180	
2,100.0	2,094.5	2,069.9	2,056.7	4.5	5.4	-129.36	46.8	175.9	226.5	217.4	9.09	24.926	
2,200.0	2,193.1	2,165.7	2,151.0	4.8	5.8	-131.00	50.7	192.5	254.1	244.5	9.60	26.475	
2,300.0	2,291.6	2,261.6	2,245.4	5.2	6.1	-132.32	54.7	209.0	281.9	271.8	10.12	27.852	
2,400.0	2,390.2	2,357.5	2,339.7	5.5	6.5	-133.40	58.7	225.6	309.8	299.1	10.65	29.078	
2,500.0	2,488.7	2,453.4	2,434.1	5.8	6.9	-134.30	62.7	242.2	337.7	326.5	11.19	30.175	
2,600.0	2,587.2	2,549.3	2,528.5	6.1	7.2	-135.07	66.7	258.7	365.8	354.0	11.74	31.159	
2,700.0	2,685.8	2,645.2	2,622.8	6.5	7.6	-135.72	70.7	275.3	393.9	381.6	12.29	32.044	
2,800.0	2,784.3	2,741.1	2,717.2	6.8	8.0	-136.29	74.7	291.9	422.0	409.1	12.85	32.844	
2,900.0	2,882.8	2,836.9	2,811.5	7.2	8.4	-136.79	78.6	308.5	450.1	436.7	13.41	33.570	
3,000.0	2,981.4	2,932.8	2,905.9	7.5	8.7	-137.23	82.6	325.0	478.3	464.3	13.97	34.230	
3,100.0	3,079.9	3,028.7	3,000.2	7.9	9.1	-137.62	86.6	341.6	506.5	492.0	14.54	34.833	
3,200.0	3,178.4	3,124.6	3,094.6	8.3	9.5	-137.97	90.6	358.2	534.8	519.6	15.11	35.386	
3,300.0	3,277.0	3,220.5	3,189.0	8.6	9.9	-138.29	94.6	374.7	563.0	547.3	15.69	35.893	
3,400.0	3,375.5	3,316.4	3,283.3	9.0	10.3	-138.57	98.6	391.3	591.3	575.0	16.26	36.360	
3,500.0	3,474.1	3,412.2	3,377.7	9.4	10.6	-138.83	102.5	407.9	619.5	602.7	16.84	36.792	
3,600.0	3,572.6	3,508.1	3,472.0	9.8	11.0	-139.07	106.5	424.4	647.8	630.4	17.42	37.191	
3,700.0	3,671.1	3,604.0	3,566.4	10.1	11.4	-139.28	110.5	441.0	676.1	658.1	18.00	37.562	
3,800.0	3,769.7	3,699.9	3,660.8	10.5	11.8	-139.48	114.5	457.6	704.4	685.8	18.58	37.907	
3,900.0	3,868.2	3,795.8	3,755.1	10.9	12.2	-139.67	118.5	474.1	732.7	713.5	19.17	38.229	
4,000.0	3,966.7	3,891.7	3,849.5	11.3	12.6	-139.84	122.5	490.7	761.0	741.3	19.75	38.530	
4,045.6	4,011.7	3,935.4	3,892.5	11.5	12.7	-139.91	124.3	498.3	773.9	753.9	20.02	38.661	
4,100.0	4,065.4	3,987.7	3,943.9	11.6	12.9	-140.17	126.5	507.3	789.0	768.6	20.36	38.748	
4,200.0	4,164.4	4,084.3	4,039.1	11.9	13.3	-140.49	130.5	524.0	814.6	793.6	20.95	38.888	
4,300.0	4,263.9	4,181.6	4,134.8	12.1	13.7	-140.61	134.5	540.8	837.6	816.1	21.51	38.948	
4,400.0	4,363.7	4,293.8	4,245.3	12.3	14.1	-140.51	139.1	559.7	857.7	835.6	22.05	38.892	
4,500.0	4,463.7	4,428.0	4,378.2	12.5	14.5	-140.27	143.3	577.4	871.8	849.3	22.53	38.689	
4,536.3	4,500.0	4,477.2	4,427.2	12.6	14.6	47.27	144.5	582.3	875.3	852.6	22.70	38.564	
4,600.0	4,563.7	4,563.9	4,513.6	12.7	14.8	47.49	146.1	589.1	879.7	856.8	22.96	38.311	
4,700.0	4,663.7	4,700.7	4,650.2	12.8	15.0	47.67	147.5	594.6	883.3	860.0	23.36	37.816	
4,800.0	4,763.7	4,814.1	4,763.7	13.0	15.2	47.68	147.6	595.0	883.6	859.9	23.72	37.256	

CC - Min centre to center distance or convergent point, SF - min separation factor, ES - min ellipse separation

Company:	Synergy Resources	Local Co-ordinate Reference:	Well SRC Margil 34TD
Project:	SEC.34-T4N-R68W	TVD Reference:	WELL @ 5104.0ft (Original Well Elev)
Reference Site:	SRC Margil 34-34D Pad Sec.34-T4N-R68W	MD Reference:	WELL @ 5104.0ft (Original Well Elev)
Site Error:	0.0ft	North Reference:	True
Reference Well:	SRC Margil 34TD	Survey Calculation Method:	Minimum Curvature
Well Error:	0.0ft	Output errors are at	2.00 sigma
Reference Wellbore	Wellbore #1	Database:	Landmark
Reference Design:	Plan #1 (12-28-11)	Offset TVD Reference:	Offset Datum

Offset Design												Offset Site Error:	0.0 ft
SRC Margil 34-34D Pad Sec.34-T4N-R68W - SRC Margil 44-34D - Wellbore #1 - Plan #1 (12-28-11)												Offset Well Error:	0.0 ft
Survey Program: 0-MWD													
Reference		Offset		Semi Major Axis			Distance						
Measured Depth (ft)	Vertical Depth (ft)	Measured Depth (ft)	Vertical Depth (ft)	Reference (ft)	Offset (ft)	Highside Toolface (°)	Offset Wellbore Centre +N/-S (ft)	+E/-W (ft)	Between Centres (ft)	Between Ellipses (ft)	Minimum Separation (ft)	Separation Factor	Warning
4,900.0	4,863.7	4,914.1	4,863.7	13.1	15.3	47.68	147.6	595.0	883.6	859.5	24.07	36.708	
5,000.0	4,963.7	5,014.1	4,963.7	13.3	15.5	47.68	147.6	595.0	883.6	859.2	24.43	36.171	
5,100.0	5,063.7	5,114.1	5,063.7	13.4	15.6	47.68	147.6	595.0	883.6	858.8	24.79	35.645	
5,200.0	5,163.7	5,214.1	5,163.7	13.6	15.8	47.68	147.6	595.0	883.6	858.5	25.15	35.131	
5,300.0	5,263.7	5,314.1	5,263.7	13.8	15.9	47.68	147.6	595.0	883.6	858.1	25.52	34.627	
5,400.0	5,363.7	5,414.1	5,363.7	13.9	16.1	47.68	147.6	595.0	883.6	857.7	25.89	34.134	
5,500.0	5,463.7	5,514.1	5,463.7	14.1	16.2	47.68	147.6	595.0	883.6	857.3	26.26	33.652	
5,600.0	5,563.7	5,614.1	5,563.7	14.2	16.4	47.68	147.6	595.0	883.6	857.0	26.63	33.180	
5,700.0	5,663.7	5,714.1	5,663.7	14.4	16.6	47.68	147.6	595.0	883.6	856.6	27.01	32.718	
5,800.0	5,763.7	5,814.1	5,763.7	14.6	16.7	47.68	147.6	595.0	883.6	856.2	27.38	32.266	
5,900.0	5,863.7	5,914.1	5,863.7	14.8	16.9	47.68	147.6	595.0	883.6	855.8	27.77	31.824	
6,000.0	5,963.7	6,014.1	5,963.7	14.9	17.1	47.68	147.6	595.0	883.6	855.5	28.15	31.392	
6,100.0	6,063.7	6,114.1	6,063.7	15.1	17.2	47.68	147.6	595.0	883.6	855.1	28.53	30.969	
6,200.0	6,163.7	6,214.1	6,163.7	15.3	17.4	47.68	147.6	595.0	883.6	854.7	28.92	30.556	
6,300.0	6,263.7	6,314.1	6,263.7	15.5	17.6	47.68	147.6	595.0	883.6	854.3	29.31	30.152	
6,400.0	6,363.7	6,414.1	6,363.7	15.6	17.7	47.68	147.6	595.0	883.6	853.9	29.70	29.756	
6,500.0	6,463.7	6,514.1	6,463.7	15.8	17.9	47.68	147.6	595.0	883.6	853.5	30.09	29.369	
6,600.0	6,563.7	6,614.1	6,563.7	16.0	18.1	47.68	147.6	595.0	883.6	853.1	30.48	28.990	
6,700.0	6,663.7	6,714.1	6,663.7	16.2	18.3	47.68	147.6	595.0	883.6	852.7	30.87	28.620	
6,800.0	6,763.7	6,814.1	6,763.7	16.3	18.4	47.68	147.6	595.0	883.6	852.3	31.27	28.257	
6,900.0	6,863.7	6,914.1	6,863.7	16.5	18.6	47.68	147.6	595.0	883.6	851.9	31.67	27.903	
7,000.0	6,963.7	7,014.1	6,963.7	16.7	18.8	47.68	147.6	595.0	883.6	851.5	32.07	27.556	
7,100.0	7,063.7	7,114.1	7,063.7	16.9	19.0	47.68	147.6	595.0	883.6	851.1	32.47	27.216	
7,200.0	7,163.7	7,214.1	7,163.7	17.1	19.1	47.68	147.6	595.0	883.6	850.7	32.87	26.884	
7,300.0	7,263.7	7,314.1	7,263.7	17.3	19.3	47.68	147.6	595.0	883.6	850.3	33.27	26.559	
7,400.0	7,363.7	7,414.1	7,363.7	17.5	19.5	47.68	147.6	595.0	883.6	849.9	33.67	26.240	
7,500.0	7,463.7	7,514.1	7,463.7	17.7	19.7	47.68	147.6	595.0	883.6	849.5	34.08	25.928	
7,600.0	7,563.7	7,614.1	7,563.7	17.8	19.9	47.68	147.6	595.0	883.6	849.1	34.48	25.623	
7,700.0	7,663.7	7,714.1	7,663.7	18.0	20.1	47.68	147.6	595.0	883.6	848.7	34.89	25.324	
7,800.0	7,763.7	7,814.1	7,763.7	18.2	20.2	47.68	147.6	595.0	883.6	848.3	35.30	25.031	
7,900.0	7,863.7	7,914.1	7,863.7	18.4	20.4	47.68	147.6	595.0	883.6	847.9	35.71	24.744	
7,986.3	7,950.0	8,000.4	7,950.0	18.6	20.6	47.68	147.6	595.0	883.6	847.5	36.06	24.502	

Company:	Synergy Resources	Local Co-ordinate Reference:	Well SRC Margil 34TD
Project:	SEC.34-T4N-R68W	TVD Reference:	WELL @ 5104.0ft (Original Well Elev)
Reference Site:	SRC Margil 34-34D Pad Sec.34-T4N-R68W	MD Reference:	WELL @ 5104.0ft (Original Well Elev)
Site Error:	0.0ft	North Reference:	True
Reference Well:	SRC Margil 34TD	Survey Calculation Method:	Minimum Curvature
Well Error:	0.0ft	Output errors are at	2.00 sigma
Reference Wellbore	Wellbore #1	Database:	Landmark
Reference Design:	Plan #1 (12-28-11)	Offset TVD Reference:	Offset Datum

Reference Depths are relative to WELL @ 5104.0ft (Original Well Elev) Coordinates are relative to: SRC Margil 34TD
 Offset Depths are relative to Offset Datum
 Central Meridian is -105.500000 °
 Coordinate System is US State Plane 1983, Colorado Northern Zone
 Grid Convergence at Surface is: 0.33°



Company:	Synergy Resources	Local Co-ordinate Reference:	Well SRC Margil 34TD
Project:	SEC.34-T4N-R68W	TVD Reference:	WELL @ 5104.0ft (Original Well Elev)
Reference Site:	SRC Margil 34-34D Pad Sec.34-T4N-R68W	MD Reference:	WELL @ 5104.0ft (Original Well Elev)
Site Error:	0.0ft	North Reference:	True
Reference Well:	SRC Margil 34TD	Survey Calculation Method:	Minimum Curvature
Well Error:	0.0ft	Output errors are at	2.00 sigma
Reference Wellbore	Wellbore #1	Database:	Landmark
Reference Design:	Plan #1 (12-28-11)	Offset TVD Reference:	Offset Datum

Reference Depths are relative to WELL @ 5104.0ft (Original Well Elev) Coordinates are relative to: SRC Margil 34TD
Offset Depths are relative to Offset Datum Coordinate System is US State Plane 1983, Colorado Northern Zone
Central Meridian is -105.500000 ° Grid Convergence at Surface is: 0.33°

