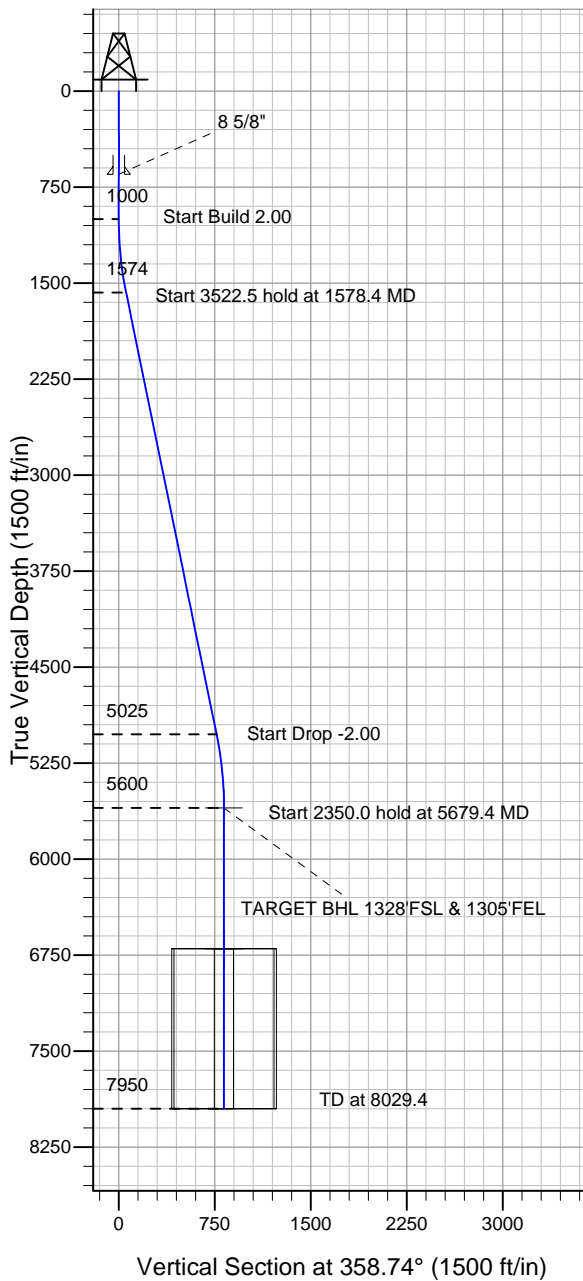


ENSIGN

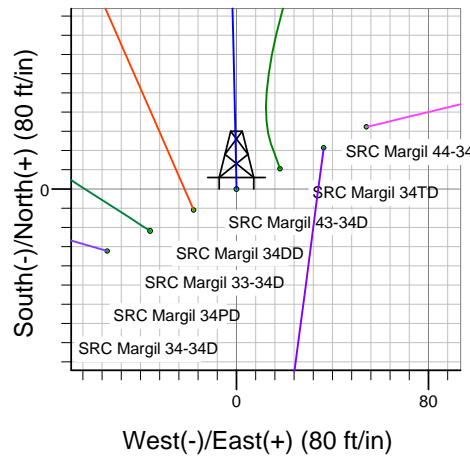
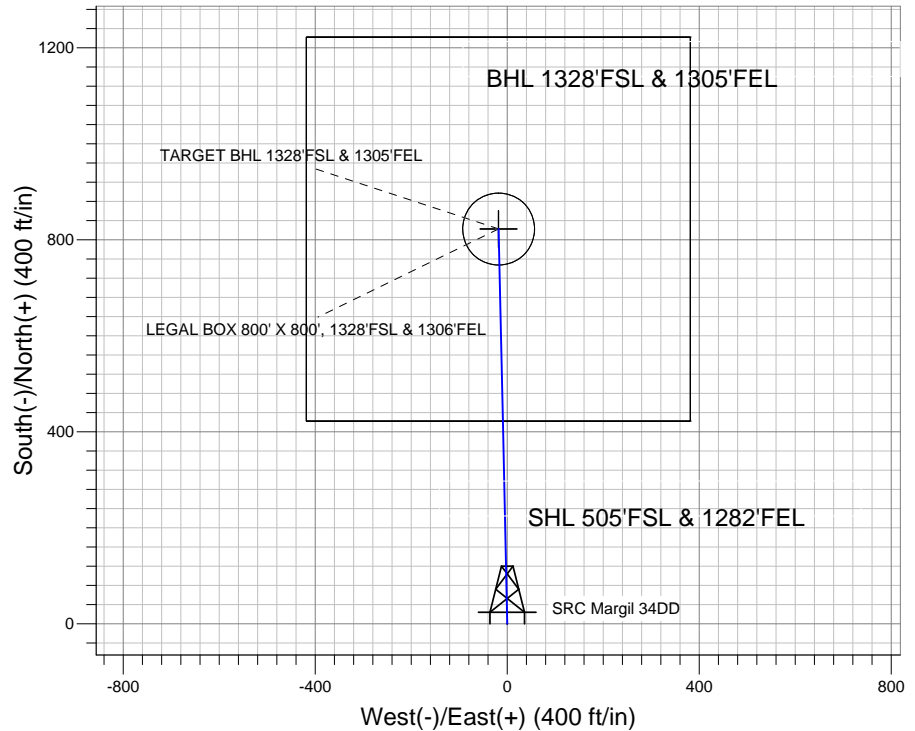
Directional

Well Name: SRC Margil 34DD

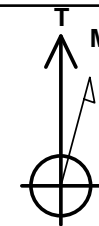
Surface Location: SRC Margil 34-34D Pad Sec.34-T4N-R68W
 North American Datum 1983 US State Plane 1983 Colorado Northern Zone
 Ground Elevation: 5091.0
 +N/-S +E/-W Northing Easting Latitude Longitude Slot
 0.0 0.0 1339438.56 3143870.72 40.264010 -104.984459
 Original Well Elev WELL @ 5104.0ft (Original Well Elev)



Synergy Resources



SRC Margil 34-34D Pad Sec.34-T4N-R68W
 SRC Margil 34DD
 Plan #1 (12-28-11)
 10:40, December 29 2011



Azimuths to True North
 Magnetic North: 8.90°

Magnetic Field
 Strength: 52977.3snT
 Dip Angle: 66.89°
 Date: 12/28/2011
 Model: IGRF2010

WELLBORE TARGET DETAILS (LAT/LONG)

Name	TVD	+N/-S	+E/-W	Latitude	Longitude	Shape
TARGET BHL 1328'FSL & 1305'FEL	5600.0	822.6	-18.1	40.266268	-104.984524	Point
LEGAL BOX 800' X 800', 1328'FSL & 1306'FEL	6700.0	822.6	-19.1	40.266268	-104.984527	Rectangle (Sides: L800.0 W800.0)
TARGET CIRCLE 1328'FSL & 1305'FEL	6700.0	822.6	-18.1	40.266268	-104.984524	Circle (Radius: 75.0)

SECTION DETAILS

Sec	MD	Inc	Azi	TVD	+N/-S	+E/-W	DLeg	TFace	VSec	Target
1	0.0	0.00	0.00	0.0	0.0	0.0	0.00	0.00	0.0	
2	1000.0	0.00	0.00	1000.0	0.0	0.0	0.00	0.00	0.0	
3	1578.4	11.57	358.74	1574.5	58.2	-1.3	2.00	358.74	58.2	
4	5101.0	11.57	358.74	5025.5	764.4	-16.9	0.00	0.00	764.6	
5	5679.4	0.00	0.00	5600.0	822.6	-18.1	2.00	180.00	822.8	TARGET BHL 1328'FSL & 1305'FEL
6	8029.4	0.00	0.00	7950.0	822.6	-18.1	0.00	0.00	822.8	



Directional

Synergy Resources

SEC.34-T4N-R68W

SRC Margil 34-34D Pad Sec.34-T4N-R68W

SRC Margil 34DD

Wellbore #1

Plan: Plan #1 (12-28-11)

Standard Planning Report

29 December, 2011

Database:	Landmark	Local Co-ordinate Reference:	Well SRC Margil 34DD
Company:	Synergy Resources	TVD Reference:	WELL @ 5104.0ft (Original Well Elev)
Project:	SEC.34-T4N-R68W	MD Reference:	WELL @ 5104.0ft (Original Well Elev)
Site:	SRC Margil 34-34D Pad Sec.34-T4N-R68W	North Reference:	True
Well:	SRC Margil 34DD	Survey Calculation Method:	Minimum Curvature
Wellbore:	Wellbore #1		
Design:	Plan #1 (12-28-11)		

Project	SEC.34-T4N-R68W, Weld County, Colorado		
Map System:	US State Plane 1983	System Datum:	Mean Sea Level
Geo Datum:	North American Datum 1983		Using Well Reference Point
Map Zone:	Colorado Northern Zone		Using geodetic scale factor

Site						SRC Margil 34-34D Pad Sec.34-T4N-R68W											
Site Position:						Northing:			1,339,412.39ft			Latitude:			40.263939		
From:			Lat/Long			Easting:			3,143,817.01ft			Longitude:			-104.984652		
Position Uncertainty:			0.0 ft			Slot Radius:			"			Grid Convergence:			0.33 °		

Well	SRC Margil 34DD					
Well Position	+N/-S	25.9 ft	Northing:	1,339,438.56 ft	Latitude:	40.264010
	+E/-W	53.9 ft	Easting:	3,143,870.72 ft	Longitude:	-104.984459
Position Uncertainty		0.0 ft	Wellhead Elevation:	ft	Ground Level:	5,091.0 ft

Wellbore	Wellbore #1				
Magnetics	Model Name	Sample Date	Declination (°)	Dip Angle (°)	Field Strength (nT)
	IGRF2010	12/28/2011	8.90	66.89	52,977

Design	Plan #1 (12-28-11)			
Audit Notes:				
Version:	Phase:	PROTOTYPE	Tie On Depth:	0.0
Vertical Section:	Depth From (TVD) (ft)	+N/-S (ft)	+E/-W (ft)	Direction (°)
	0.0	0.0	0.0	358.74

Plan Sections										
Measured Depth (ft)	Inclination (°)	Azimuth (°)	Vertical Depth (ft)	+N/-S (ft)	+E/-W (ft)	Dogleg Rate (°/100ft)	Build Rate (°/100ft)	Turn Rate (°/100ft)	TFO (°)	Target
0.0	0.00	0.00	0.0	0.0	0.0	0.00	0.00	0.00	0.00	
1,000.0	0.00	0.00	1,000.0	0.0	0.0	0.00	0.00	0.00	0.00	
1,578.4	11.57	358.74	1,574.5	58.2	-1.3	2.00	2.00	0.00	358.74	
5,101.0	11.57	358.74	5,025.5	764.4	-16.9	0.00	0.00	0.00	0.00	
5,679.4	0.00	0.00	5,600.0	822.6	-18.1	2.00	-2.00	0.00	180.00	TARGET BHL 1328
8,029.4	0.00	0.00	7,950.0	822.6	-18.1	0.00	0.00	0.00	0.00	

Database:	Landmark	Local Co-ordinate Reference:	Well SRC Margil 34DD
Company:	Synergy Resources	TVD Reference:	WELL @ 5104.0ft (Original Well Elev)
Project:	SEC.34-T4N-R68W	MD Reference:	WELL @ 5104.0ft (Original Well Elev)
Site:	SRC Margil 34-34D Pad Sec.34-T4N-R68W	North Reference:	True
Well:	SRC Margil 34DD	Survey Calculation Method:	Minimum Curvature
Wellbore:	Wellbore #1		
Design:	Plan #1 (12-28-11)		

Planned Survey									
Measured Depth (ft)	Inclination (°)	Azimuth (°)	Vertical Depth (ft)	+N/-S (ft)	+E/-W (ft)	Vertical Section (ft)	Dogleg Rate (°/100ft)	Build Rate (°/100ft)	Turn Rate (°/100ft)
0.0	0.00	0.00	0.0	0.0	0.0	0.0	0.00	0.00	0.00
40.0	0.00	0.00	40.0	0.0	0.0	0.0	0.00	0.00	0.00
80.0	0.00	0.00	80.0	0.0	0.0	0.0	0.00	0.00	0.00
120.0	0.00	0.00	120.0	0.0	0.0	0.0	0.00	0.00	0.00
160.0	0.00	0.00	160.0	0.0	0.0	0.0	0.00	0.00	0.00
200.0	0.00	0.00	200.0	0.0	0.0	0.0	0.00	0.00	0.00
240.0	0.00	0.00	240.0	0.0	0.0	0.0	0.00	0.00	0.00
280.0	0.00	0.00	280.0	0.0	0.0	0.0	0.00	0.00	0.00
320.0	0.00	0.00	320.0	0.0	0.0	0.0	0.00	0.00	0.00
360.0	0.00	0.00	360.0	0.0	0.0	0.0	0.00	0.00	0.00
400.0	0.00	0.00	400.0	0.0	0.0	0.0	0.00	0.00	0.00
440.0	0.00	0.00	440.0	0.0	0.0	0.0	0.00	0.00	0.00
480.0	0.00	0.00	480.0	0.0	0.0	0.0	0.00	0.00	0.00
520.0	0.00	0.00	520.0	0.0	0.0	0.0	0.00	0.00	0.00
560.0	0.00	0.00	560.0	0.0	0.0	0.0	0.00	0.00	0.00
600.0	0.00	0.00	600.0	0.0	0.0	0.0	0.00	0.00	0.00
640.0	0.00	0.00	640.0	0.0	0.0	0.0	0.00	0.00	0.00
650.0	0.00	0.00	650.0	0.0	0.0	0.0	0.00	0.00	0.00
8 5/8"									
680.0	0.00	0.00	680.0	0.0	0.0	0.0	0.00	0.00	0.00
720.0	0.00	0.00	720.0	0.0	0.0	0.0	0.00	0.00	0.00
760.0	0.00	0.00	760.0	0.0	0.0	0.0	0.00	0.00	0.00
800.0	0.00	0.00	800.0	0.0	0.0	0.0	0.00	0.00	0.00
840.0	0.00	0.00	840.0	0.0	0.0	0.0	0.00	0.00	0.00
880.0	0.00	0.00	880.0	0.0	0.0	0.0	0.00	0.00	0.00
920.0	0.00	0.00	920.0	0.0	0.0	0.0	0.00	0.00	0.00
960.0	0.00	0.00	960.0	0.0	0.0	0.0	0.00	0.00	0.00
1,000.0	0.00	0.00	1,000.0	0.0	0.0	0.0	0.00	0.00	0.00
1,040.0	0.80	358.74	1,040.0	0.3	0.0	0.3	2.00	2.00	0.00
1,080.0	1.60	358.74	1,080.0	1.1	0.0	1.1	2.00	2.00	0.00
1,120.0	2.40	358.74	1,120.0	2.5	-0.1	2.5	2.00	2.00	0.00
1,160.0	3.20	358.74	1,159.9	4.5	-0.1	4.5	2.00	2.00	0.00
1,200.0	4.00	358.74	1,199.8	7.0	-0.2	7.0	2.00	2.00	0.00
1,240.0	4.80	358.74	1,239.7	10.0	-0.2	10.0	2.00	2.00	0.00
1,280.0	5.60	358.74	1,279.6	13.7	-0.3	13.7	2.00	2.00	0.00
1,320.0	6.40	358.74	1,319.3	17.8	-0.4	17.9	2.00	2.00	0.00
1,360.0	7.20	358.74	1,359.1	22.6	-0.5	22.6	2.00	2.00	0.00
1,400.0	8.00	358.74	1,398.7	27.9	-0.6	27.9	2.00	2.00	0.00
1,440.0	8.80	358.74	1,438.3	33.7	-0.7	33.7	2.00	2.00	0.00
1,480.0	9.60	358.74	1,477.8	40.1	-0.9	40.1	2.00	2.00	0.00
1,520.0	10.40	358.74	1,517.1	47.1	-1.0	47.1	2.00	2.00	0.00
1,560.0	11.20	358.74	1,556.4	54.5	-1.2	54.6	2.00	2.00	0.00
1,578.4	11.57	358.74	1,574.5	58.2	-1.3	58.2	2.00	2.00	0.00
1,600.0	11.57	358.74	1,595.6	62.5	-1.4	62.5	0.00	0.00	0.00
1,640.0	11.57	358.74	1,634.8	70.5	-1.6	70.5	0.00	0.00	0.00
1,680.0	11.57	358.74	1,674.0	78.5	-1.7	78.6	0.00	0.00	0.00
1,720.0	11.57	358.74	1,713.2	86.6	-1.9	86.6	0.00	0.00	0.00
1,760.0	11.57	358.74	1,752.4	94.6	-2.1	94.6	0.00	0.00	0.00
1,800.0	11.57	358.74	1,791.6	102.6	-2.3	102.6	0.00	0.00	0.00
1,840.0	11.57	358.74	1,830.8	110.6	-2.4	110.7	0.00	0.00	0.00
1,880.0	11.57	358.74	1,870.0	118.6	-2.6	118.7	0.00	0.00	0.00
1,920.0	11.57	358.74	1,909.1	126.7	-2.8	126.7	0.00	0.00	0.00
1,960.0	11.57	358.74	1,948.3	134.7	-3.0	134.7	0.00	0.00	0.00
2,000.0	11.57	358.74	1,987.5	142.7	-3.1	142.7	0.00	0.00	0.00

Database:	Landmark	Local Co-ordinate Reference:	Well SRC Margil 34DD
Company:	Synergy Resources	TVD Reference:	WELL @ 5104.0ft (Original Well Elev)
Project:	SEC.34-T4N-R68W	MD Reference:	WELL @ 5104.0ft (Original Well Elev)
Site:	SRC Margil 34-34D Pad Sec.34-T4N-R68W	North Reference:	True
Well:	SRC Margil 34DD	Survey Calculation Method:	Minimum Curvature
Wellbore:	Wellbore #1		
Design:	Plan #1 (12-28-11)		

Planned Survey										
Measured Depth (ft)	Inclination (°)	Azimuth (°)	Vertical Depth (ft)	+N/-S (ft)	+E/-W (ft)	Vertical Section (ft)	Dogleg Rate (°/100ft)	Build Rate (°/100ft)	Turn Rate (°/100ft)	
2,040.0	11.57	358.74	2,026.7	150.7	-3.3	150.8	0.00	0.00	0.00	
2,080.0	11.57	358.74	2,065.9	158.7	-3.5	158.8	0.00	0.00	0.00	
2,120.0	11.57	358.74	2,105.1	166.8	-3.7	166.8	0.00	0.00	0.00	
2,160.0	11.57	358.74	2,144.3	174.8	-3.9	174.8	0.00	0.00	0.00	
2,200.0	11.57	358.74	2,183.5	182.8	-4.0	182.8	0.00	0.00	0.00	
2,240.0	11.57	358.74	2,222.6	190.8	-4.2	190.9	0.00	0.00	0.00	
2,280.0	11.57	358.74	2,261.8	198.8	-4.4	198.9	0.00	0.00	0.00	
2,320.0	11.57	358.74	2,301.0	206.9	-4.6	206.9	0.00	0.00	0.00	
2,360.0	11.57	358.74	2,340.2	214.9	-4.7	214.9	0.00	0.00	0.00	
2,400.0	11.57	358.74	2,379.4	222.9	-4.9	223.0	0.00	0.00	0.00	
2,440.0	11.57	358.74	2,418.6	230.9	-5.1	231.0	0.00	0.00	0.00	
2,480.0	11.57	358.74	2,457.8	238.9	-5.3	239.0	0.00	0.00	0.00	
2,520.0	11.57	358.74	2,497.0	247.0	-5.4	247.0	0.00	0.00	0.00	
2,560.0	11.57	358.74	2,536.1	255.0	-5.6	255.0	0.00	0.00	0.00	
2,600.0	11.57	358.74	2,575.3	263.0	-5.8	263.1	0.00	0.00	0.00	
2,640.0	11.57	358.74	2,614.5	271.0	-6.0	271.1	0.00	0.00	0.00	
2,680.0	11.57	358.74	2,653.7	279.0	-6.2	279.1	0.00	0.00	0.00	
2,720.0	11.57	358.74	2,692.9	287.1	-6.3	287.1	0.00	0.00	0.00	
2,760.0	11.57	358.74	2,732.1	295.1	-6.5	295.1	0.00	0.00	0.00	
2,800.0	11.57	358.74	2,771.3	303.1	-6.7	303.2	0.00	0.00	0.00	
2,840.0	11.57	358.74	2,810.4	311.1	-6.9	311.2	0.00	0.00	0.00	
2,880.0	11.57	358.74	2,849.6	319.1	-7.0	319.2	0.00	0.00	0.00	
2,920.0	11.57	358.74	2,888.8	327.2	-7.2	327.2	0.00	0.00	0.00	
2,960.0	11.57	358.74	2,928.0	335.2	-7.4	335.3	0.00	0.00	0.00	
3,000.0	11.57	358.74	2,967.2	343.2	-7.6	343.3	0.00	0.00	0.00	
3,040.0	11.57	358.74	3,006.4	351.2	-7.7	351.3	0.00	0.00	0.00	
3,080.0	11.57	358.74	3,045.6	359.2	-7.9	359.3	0.00	0.00	0.00	
3,120.0	11.57	358.74	3,084.8	367.3	-8.1	367.3	0.00	0.00	0.00	
3,160.0	11.57	358.74	3,123.9	375.3	-8.3	375.4	0.00	0.00	0.00	
3,200.0	11.57	358.74	3,163.1	383.3	-8.5	383.4	0.00	0.00	0.00	
3,240.0	11.57	358.74	3,202.3	391.3	-8.6	391.4	0.00	0.00	0.00	
3,280.0	11.57	358.74	3,241.5	399.3	-8.8	399.4	0.00	0.00	0.00	
3,320.0	11.57	358.74	3,280.7	407.4	-9.0	407.5	0.00	0.00	0.00	
3,360.0	11.57	358.74	3,319.9	415.4	-9.2	415.5	0.00	0.00	0.00	
3,400.0	11.57	358.74	3,359.1	423.4	-9.3	423.5	0.00	0.00	0.00	
3,440.0	11.57	358.74	3,398.3	431.4	-9.5	431.5	0.00	0.00	0.00	
3,480.0	11.57	358.74	3,437.4	439.4	-9.7	439.5	0.00	0.00	0.00	
3,520.0	11.57	358.74	3,476.6	447.5	-9.9	447.6	0.00	0.00	0.00	
3,560.0	11.57	358.74	3,515.8	455.5	-10.0	455.6	0.00	0.00	0.00	
3,600.0	11.57	358.74	3,555.0	463.5	-10.2	463.6	0.00	0.00	0.00	
3,640.0	11.57	358.74	3,594.2	471.5	-10.4	471.6	0.00	0.00	0.00	
3,680.0	11.57	358.74	3,633.4	479.5	-10.6	479.6	0.00	0.00	0.00	
3,720.0	11.57	358.74	3,672.6	487.5	-10.8	487.7	0.00	0.00	0.00	
3,760.0	11.57	358.74	3,711.8	495.6	-10.9	495.7	0.00	0.00	0.00	
3,800.0	11.57	358.74	3,750.9	503.6	-11.1	503.7	0.00	0.00	0.00	
3,840.0	11.57	358.74	3,790.1	511.6	-11.3	511.7	0.00	0.00	0.00	
3,880.0	11.57	358.74	3,829.3	519.6	-11.5	519.8	0.00	0.00	0.00	
3,920.0	11.57	358.74	3,868.5	527.6	-11.6	527.8	0.00	0.00	0.00	
3,960.0	11.57	358.74	3,907.7	535.7	-11.8	535.8	0.00	0.00	0.00	
4,000.0	11.57	358.74	3,946.9	543.7	-12.0	543.8	0.00	0.00	0.00	
4,040.0	11.57	358.74	3,986.1	551.7	-12.2	551.8	0.00	0.00	0.00	
4,080.0	11.57	358.74	4,025.3	559.7	-12.3	559.9	0.00	0.00	0.00	
4,120.0	11.57	358.74	4,064.4	567.7	-12.5	567.9	0.00	0.00	0.00	
4,160.0	11.57	358.74	4,103.6	575.8	-12.7	575.9	0.00	0.00	0.00	

Database: Landmark
Company: Synergy Resources
Project: SEC.34-T4N-R68W
Site: SRC Margil 34-34D Pad Sec.34-T4N-R68W
Well: SRC Margil 34DD
Wellbore: Wellbore #1
Design: Plan #1 (12-28-11)

Local Co-ordinate Reference: Well SRC Margil 34DD
TVD Reference: WELL @ 5104.0ft (Original Well Elev)
MD Reference: WELL @ 5104.0ft (Original Well Elev)
North Reference: True
Survey Calculation Method: Minimum Curvature

Planned Survey									
Measured Depth (ft)	Inclination (°)	Azimuth (°)	Vertical Depth (ft)	+N/-S (ft)	+E/-W (ft)	Vertical Section (ft)	Dogleg Rate (°/100ft)	Build Rate (°/100ft)	Turn Rate (°/100ft)
4,200.0	11.57	358.74	4,142.8	583.8	-12.9	583.9	0.00	0.00	0.00
4,240.0	11.57	358.74	4,182.0	591.8	-13.1	591.9	0.00	0.00	0.00
4,280.0	11.57	358.74	4,221.2	599.8	-13.2	600.0	0.00	0.00	0.00
4,320.0	11.57	358.74	4,260.4	607.8	-13.4	608.0	0.00	0.00	0.00
4,360.0	11.57	358.74	4,299.6	615.9	-13.6	616.0	0.00	0.00	0.00
4,400.0	11.57	358.74	4,338.8	623.9	-13.8	624.0	0.00	0.00	0.00
4,440.0	11.57	358.74	4,377.9	631.9	-13.9	632.1	0.00	0.00	0.00
4,480.0	11.57	358.74	4,417.1	639.9	-14.1	640.1	0.00	0.00	0.00
4,520.0	11.57	358.74	4,456.3	647.9	-14.3	648.1	0.00	0.00	0.00
4,560.0	11.57	358.74	4,495.5	656.0	-14.5	656.1	0.00	0.00	0.00
4,600.0	11.57	358.74	4,534.7	664.0	-14.6	664.1	0.00	0.00	0.00
4,640.0	11.57	358.74	4,573.9	672.0	-14.8	672.2	0.00	0.00	0.00
4,680.0	11.57	358.74	4,613.1	680.0	-15.0	680.2	0.00	0.00	0.00
4,720.0	11.57	358.74	4,652.3	688.0	-15.2	688.2	0.00	0.00	0.00
4,760.0	11.57	358.74	4,691.4	696.1	-15.3	696.2	0.00	0.00	0.00
4,800.0	11.57	358.74	4,730.6	704.1	-15.5	704.3	0.00	0.00	0.00
4,840.0	11.57	358.74	4,769.8	712.1	-15.7	712.3	0.00	0.00	0.00
4,880.0	11.57	358.74	4,809.0	720.1	-15.9	720.3	0.00	0.00	0.00
4,920.0	11.57	358.74	4,848.2	728.1	-16.1	728.3	0.00	0.00	0.00
4,960.0	11.57	358.74	4,887.4	736.2	-16.2	736.3	0.00	0.00	0.00
5,000.0	11.57	358.74	4,926.6	744.2	-16.4	744.4	0.00	0.00	0.00
5,040.0	11.57	358.74	4,965.8	752.2	-16.6	752.4	0.00	0.00	0.00
5,080.0	11.57	358.74	5,004.9	760.2	-16.8	760.4	0.00	0.00	0.00
5,101.0	11.57	358.74	5,025.5	764.4	-16.9	764.6	0.00	0.00	0.00
5,120.0	11.19	358.74	5,044.1	768.2	-16.9	768.4	2.00	-2.00	0.00
5,160.0	10.39	358.74	5,083.4	775.7	-17.1	775.8	2.00	-2.00	0.00
5,200.0	9.59	358.74	5,122.8	782.6	-17.3	782.8	2.00	-2.00	0.00
5,240.0	8.79	358.74	5,162.3	789.0	-17.4	789.2	2.00	-2.00	0.00
5,280.0	7.99	358.74	5,201.9	794.8	-17.5	795.0	2.00	-2.00	0.00
5,320.0	7.19	358.74	5,241.5	800.1	-17.6	800.3	2.00	-2.00	0.00
5,360.0	6.39	358.74	5,281.3	804.8	-17.7	805.0	2.00	-2.00	0.00
5,400.0	5.59	358.74	5,321.0	809.0	-17.8	809.2	2.00	-2.00	0.00
5,440.0	4.79	358.74	5,360.9	812.6	-17.9	812.8	2.00	-2.00	0.00
5,480.0	3.99	358.74	5,400.8	815.7	-18.0	815.9	2.00	-2.00	0.00
5,520.0	3.19	358.74	5,440.7	818.2	-18.0	818.4	2.00	-2.00	0.00
5,560.0	2.39	358.74	5,480.6	820.1	-18.1	820.3	2.00	-2.00	0.00
5,600.0	1.59	358.74	5,520.6	821.5	-18.1	821.7	2.00	-2.00	0.00
5,640.0	0.79	358.74	5,560.6	822.3	-18.1	822.5	2.00	-2.00	0.00
5,679.4	0.00	0.00	5,600.0	822.6	-18.1	822.8	2.00	-2.00	0.00
TARGET BHL 1328'FSL & 1305'FEL									
5,680.0	0.00	0.00	5,600.6	822.6	-18.1	822.8	0.00	0.00	0.00
5,720.0	0.00	0.00	5,640.6	822.6	-18.1	822.8	0.00	0.00	0.00
5,760.0	0.00	0.00	5,680.6	822.6	-18.1	822.8	0.00	0.00	0.00
5,800.0	0.00	0.00	5,720.6	822.6	-18.1	822.8	0.00	0.00	0.00
5,840.0	0.00	0.00	5,760.6	822.6	-18.1	822.8	0.00	0.00	0.00
5,880.0	0.00	0.00	5,800.6	822.6	-18.1	822.8	0.00	0.00	0.00
5,920.0	0.00	0.00	5,840.6	822.6	-18.1	822.8	0.00	0.00	0.00
5,960.0	0.00	0.00	5,880.6	822.6	-18.1	822.8	0.00	0.00	0.00
6,000.0	0.00	0.00	5,920.6	822.6	-18.1	822.8	0.00	0.00	0.00
6,040.0	0.00	0.00	5,960.6	822.6	-18.1	822.8	0.00	0.00	0.00
6,080.0	0.00	0.00	6,000.6	822.6	-18.1	822.8	0.00	0.00	0.00
6,120.0	0.00	0.00	6,040.6	822.6	-18.1	822.8	0.00	0.00	0.00
6,160.0	0.00	0.00	6,080.6	822.6	-18.1	822.8	0.00	0.00	0.00
6,200.0	0.00	0.00	6,120.6	822.6	-18.1	822.8	0.00	0.00	0.00

Database:	Landmark	Local Co-ordinate Reference:	Well SRC Margil 34DD
Company:	Synergy Resources	TVD Reference:	WELL @ 5104.0ft (Original Well Elev)
Project:	SEC.34-T4N-R68W	MD Reference:	WELL @ 5104.0ft (Original Well Elev)
Site:	SRC Margil 34-34D Pad Sec.34-T4N-R68W	North Reference:	True
Well:	SRC Margil 34DD	Survey Calculation Method:	Minimum Curvature
Wellbore:	Wellbore #1		
Design:	Plan #1 (12-28-11)		

Planned Survey									
Measured Depth (ft)	Inclination (°)	Azimuth (°)	Vertical Depth (ft)	+N/-S (ft)	+E/-W (ft)	Vertical Section (ft)	Dogleg Rate (°/100ft)	Build Rate (°/100ft)	Turn Rate (°/100ft)
6,240.0	0.00	0.00	6,160.6	822.6	-18.1	822.8	0.00	0.00	0.00
6,280.0	0.00	0.00	6,200.6	822.6	-18.1	822.8	0.00	0.00	0.00
6,320.0	0.00	0.00	6,240.6	822.6	-18.1	822.8	0.00	0.00	0.00
6,360.0	0.00	0.00	6,280.6	822.6	-18.1	822.8	0.00	0.00	0.00
6,400.0	0.00	0.00	6,320.6	822.6	-18.1	822.8	0.00	0.00	0.00
6,440.0	0.00	0.00	6,360.6	822.6	-18.1	822.8	0.00	0.00	0.00
6,480.0	0.00	0.00	6,400.6	822.6	-18.1	822.8	0.00	0.00	0.00
6,520.0	0.00	0.00	6,440.6	822.6	-18.1	822.8	0.00	0.00	0.00
6,560.0	0.00	0.00	6,480.6	822.6	-18.1	822.8	0.00	0.00	0.00
6,600.0	0.00	0.00	6,520.6	822.6	-18.1	822.8	0.00	0.00	0.00
6,640.0	0.00	0.00	6,560.6	822.6	-18.1	822.8	0.00	0.00	0.00
6,680.0	0.00	0.00	6,600.6	822.6	-18.1	822.8	0.00	0.00	0.00
6,720.0	0.00	0.00	6,640.6	822.6	-18.1	822.8	0.00	0.00	0.00
6,760.0	0.00	0.00	6,680.6	822.6	-18.1	822.8	0.00	0.00	0.00
6,779.4	0.00	0.00	6,700.0	822.6	-18.1	822.8	0.00	0.00	0.00
LEGAL BOX 800' X 800', 1328'FSL & 1306'FEL - TARGET CIRCLE 1328'FSL & 1305'FEL									
6,800.0	0.00	0.00	6,720.6	822.6	-18.1	822.8	0.00	0.00	0.00
6,840.0	0.00	0.00	6,760.6	822.6	-18.1	822.8	0.00	0.00	0.00
6,880.0	0.00	0.00	6,800.6	822.6	-18.1	822.8	0.00	0.00	0.00
6,920.0	0.00	0.00	6,840.6	822.6	-18.1	822.8	0.00	0.00	0.00
6,960.0	0.00	0.00	6,880.6	822.6	-18.1	822.8	0.00	0.00	0.00
7,000.0	0.00	0.00	6,920.6	822.6	-18.1	822.8	0.00	0.00	0.00
7,040.0	0.00	0.00	6,960.6	822.6	-18.1	822.8	0.00	0.00	0.00
7,080.0	0.00	0.00	7,000.6	822.6	-18.1	822.8	0.00	0.00	0.00
7,120.0	0.00	0.00	7,040.6	822.6	-18.1	822.8	0.00	0.00	0.00
7,160.0	0.00	0.00	7,080.6	822.6	-18.1	822.8	0.00	0.00	0.00
7,200.0	0.00	0.00	7,120.6	822.6	-18.1	822.8	0.00	0.00	0.00
7,240.0	0.00	0.00	7,160.6	822.6	-18.1	822.8	0.00	0.00	0.00
7,280.0	0.00	0.00	7,200.6	822.6	-18.1	822.8	0.00	0.00	0.00
7,320.0	0.00	0.00	7,240.6	822.6	-18.1	822.8	0.00	0.00	0.00
7,360.0	0.00	0.00	7,280.6	822.6	-18.1	822.8	0.00	0.00	0.00
7,400.0	0.00	0.00	7,320.6	822.6	-18.1	822.8	0.00	0.00	0.00
7,440.0	0.00	0.00	7,360.6	822.6	-18.1	822.8	0.00	0.00	0.00
7,480.0	0.00	0.00	7,400.6	822.6	-18.1	822.8	0.00	0.00	0.00
7,520.0	0.00	0.00	7,440.6	822.6	-18.1	822.8	0.00	0.00	0.00
7,560.0	0.00	0.00	7,480.6	822.6	-18.1	822.8	0.00	0.00	0.00
7,600.0	0.00	0.00	7,520.6	822.6	-18.1	822.8	0.00	0.00	0.00
7,640.0	0.00	0.00	7,560.6	822.6	-18.1	822.8	0.00	0.00	0.00
7,680.0	0.00	0.00	7,600.6	822.6	-18.1	822.8	0.00	0.00	0.00
7,720.0	0.00	0.00	7,640.6	822.6	-18.1	822.8	0.00	0.00	0.00
7,760.0	0.00	0.00	7,680.6	822.6	-18.1	822.8	0.00	0.00	0.00
7,800.0	0.00	0.00	7,720.6	822.6	-18.1	822.8	0.00	0.00	0.00
7,840.0	0.00	0.00	7,760.6	822.6	-18.1	822.8	0.00	0.00	0.00
7,880.0	0.00	0.00	7,800.6	822.6	-18.1	822.8	0.00	0.00	0.00
7,920.0	0.00	0.00	7,840.6	822.6	-18.1	822.8	0.00	0.00	0.00
7,960.0	0.00	0.00	7,880.6	822.6	-18.1	822.8	0.00	0.00	0.00
8,000.0	0.00	0.00	7,920.6	822.6	-18.1	822.8	0.00	0.00	0.00
8,029.4	0.00	0.00	7,950.0	822.6	-18.1	822.8	0.00	0.00	0.00

Database:	Landmark	Local Co-ordinate Reference:	Well SRC Margil 34DD
Company:	Synergy Resources	TVD Reference:	WELL @ 5104.0ft (Original Well Elev)
Project:	SEC.34-T4N-R68W	MD Reference:	WELL @ 5104.0ft (Original Well Elev)
Site:	SRC Margil 34-34D Pad Sec.34-T4N-R68W	North Reference:	True
Well:	SRC Margil 34DD	Survey Calculation Method:	Minimum Curvature
Wellbore:	Wellbore #1		
Design:	Plan #1 (12-28-11)		

Casing Points					
Measured Depth (ft)	Vertical Depth (ft)		Name	Casing Diameter (")	Hole Diameter (")
650.0	650.0	8 5/8"		8-5/8	12-1/4



Directional

Synergy Resources

SEC.34-T4N-R68W

SRC Margil 34-34D Pad Sec.34-T4N-R68W

SRC Margil 34DD

Wellbore #1

Plan #1 (12-28-11)

Anticollision Report

29 December, 2011

Company:	Synergy Resources	Local Co-ordinate Reference:	Well SRC Margil 34DD
Project:	SEC.34-T4N-R68W	TVD Reference:	WELL @ 5104.0ft (Original Well Elev)
Reference Site:	SRC Margil 34-34D Pad Sec.34-T4N-R68W	MD Reference:	WELL @ 5104.0ft (Original Well Elev)
Site Error:	0.0ft	North Reference:	True
Reference Well:	SRC Margil 34DD	Survey Calculation Method:	Minimum Curvature
Well Error:	0.0ft	Output errors are at	2.00 sigma
Reference Wellbore	Wellbore #1	Database:	Landmark
Reference Design:	Plan #1 (12-28-11)	Offset TVD Reference:	Offset Datum

Reference	Plan #1 (12-28-11)		
Filter type:	NO GLOBAL FILTER: Using user defined selection & filtering criteria		
Interpolation Method:	Stations	Error Model:	ISCWSA
Depth Range:	Unlimited	Scan Method:	Closest Approach 3D
Results Limited by:	Maximum center-center distance of 10,000.0ft	Error Surface:	Elliptical Conic
Warning Levels Evaluated at:	2.00 Sigma		

Survey Tool Program	Date 12/29/2011			
From (ft)	To (ft)	Survey (Wellbore)	Tool Name	Description
0.0	8,029.4	Plan #1 (12-28-11) (Wellbore #1)	MWD	MWD - Standard

Summary						
Site Name	Reference Measured Depth (ft)	Offset Measured Depth (ft)	Distance Between Centres (ft)	Distance Between Ellipses (ft)	Separation Factor	Warning
Offset Well - Wellbore - Design						
SRC Margil 34-34D Pad Sec.34-T4N-R68W						
SRC Margil 33-34D - Wellbore #1 - Plan #1 (12-28-11)	269.8	269.8	19.9	18.9	20.122	CC
SRC Margil 33-34D - Wellbore #1 - Plan #1 (12-28-11)	300.0	300.0	19.9	18.8	17.711	ES
SRC Margil 33-34D - Wellbore #1 - Plan #1 (12-28-11)	500.0	499.0	24.8	22.7	12.109	SF
SRC Margil 43-34D - Wellbore #1 - Plan #1 (12-28-11)	200.0	200.0	20.0	19.3	29.694	CC
SRC Margil 43-34D - Wellbore #1 - Plan #1 (12-28-11)	300.0	299.9	20.3	19.1	18.030	ES
SRC Margil 43-34D - Wellbore #1 - Plan #1 (12-28-11)	500.0	498.6	26.6	24.6	12.977	SF

Offset Design											
SRC Margil 34-34D Pad Sec.34-T4N-R68W - SRC Margil 33-34D - Wellbore #1 - Plan #1 (12-28-11)											
Survey Program: 0-MWD											
Reference											
Measured Depth (ft)	Vertical Depth (ft)	Offset Measured Depth (ft)	Vertical Depth (ft)	Semi Major Axis		Highside Toolface (°)	Offset Wellbore Centre		Distance		Warning
				Reference (ft)	Offset (ft)		+N/-S (ft)	+E/-W (ft)	Between Centres (ft)	Between Ellipses (ft)	
0.0	0.0	0.0	0.0	0.0	0.0	-116.08	-8.7	-17.9	19.9	19.9	0.00 N/A
100.0	100.0	100.0	100.0	0.1	0.1	-116.08	-8.7	-17.9	19.9	19.7	0.22 88.476
200.0	200.0	200.0	200.0	0.3	0.3	-116.08	-8.7	-17.9	19.9	19.2	0.67 29.492
269.8	269.8	269.8	269.8	0.5	0.5	-113.63	-8.0	-18.2	19.9	18.9	0.99 20.122 CC
300.0	300.0	300.0	300.0	0.6	0.6	-111.05	-7.1	-18.6	19.9	18.8	1.12 17.711 ES
400.0	400.0	399.7	399.6	0.8	0.8	-96.54	-2.4	-20.7	20.8	19.2	1.58 13.178
500.0	500.0	499.0	498.5	1.0	1.0	-77.07	5.5	-24.1	24.8	22.7	2.05 12.109 SF
600.0	600.0	597.5	596.3	1.2	1.3	-60.31	16.5	-28.9	33.5	31.0	2.52 13.275
700.0	700.0	695.2	692.7	1.5	1.6	-49.06	30.4	-35.0	46.9	43.9	3.00 15.654
800.0	800.0	791.6	787.4	1.7	2.0	-41.97	47.0	-42.3	64.5	61.0	3.47 18.590
900.0	900.0	886.7	880.2	1.9	2.4	-37.43	66.3	-50.7	85.8	81.9	3.94 21.764
1,000.0	1,000.0	980.3	970.7	2.1	2.9	-34.39	88.0	-60.2	110.6	106.2	4.42 25.027
1,100.0	1,100.0	1,072.7	1,059.3	2.4	3.3	-31.10	112.1	-70.8	137.2	132.3	4.90 28.028
1,200.0	1,199.8	1,164.2	1,146.1	2.6	3.9	-30.11	138.5	-82.4	164.1	158.8	5.38 30.505
1,300.0	1,299.5	1,260.7	1,237.1	2.8	4.5	-29.78	167.8	-95.2	189.8	183.9	5.89 32.243
1,400.0	1,398.7	1,358.0	1,329.0	3.1	5.1	-29.98	197.4	-108.1	212.5	206.1	6.39 33.228
1,500.0	1,497.5	1,456.0	1,421.4	3.3	5.8	-30.57	227.1	-121.2	232.3	225.3	6.93 33.500
1,578.4	1,574.5	1,533.2	1,494.2	3.6	6.3	-31.27	250.6	-131.4	245.8	238.4	7.37 33.326
1,600.0	1,595.6	1,554.5	1,514.3	3.6	6.4	-31.51	257.0	-134.3	249.2	241.7	7.50 33.221
1,700.0	1,693.6	1,653.0	1,607.3	4.0	7.0	-32.58	287.0	-147.4	265.4	257.3	8.11 32.733
1,800.0	1,791.6	1,751.6	1,700.3	4.3	7.7	-33.53	316.9	-160.5	281.6	272.9	8.73 32.256

CC - Min centre to center distance or convergent point, SF - min separation factor, ES - min ellipse separation

Offset Design		SRC Margil 34-34D Pad Sec.34-T4N-R68W - SRC Margil 33-34D - Wellbore #1 - Plan #1 (12-28-11)											Offset Site Error:		0.0 ft
Survey Program: 0-MWD													Offset Well Error:		0.0 ft
Reference		Offset		Semi Major Axis			Distance								
Measured Depth (ft)	Vertical Depth (ft)	Measured Depth (ft)	Vertical Depth (ft)	Reference (ft)	Offset (ft)	Highside Toolface (°)	Offset Wellbore Centre +N/-S (ft)	+E/-W (ft)	Between Centres (ft)	Between Ellipses (ft)	Minimum Separation (ft)	Separation Factor	Warning		
1,900.0	1,889.5	1,850.2	1,793.3	4.7	8.3	-34.37	346.8	-173.6	297.9	288.5	9.37	31.795			
2,000.0	1,987.5	1,948.8	1,886.3	5.0	9.0	-35.13	376.8	-186.7	314.2	304.2	10.02	31.357			
2,100.0	2,085.5	2,047.3	1,979.3	5.4	9.7	-35.81	406.7	-199.9	330.6	320.0	10.69	30.941			
2,200.0	2,183.5	2,145.9	2,072.3	5.8	10.3	-36.43	436.7	-213.0	347.1	335.7	11.36	30.550			
2,300.0	2,281.4	2,244.5	2,165.2	6.2	11.0	-36.99	466.6	-226.1	363.6	351.5	12.05	30.182			
2,400.0	2,379.4	2,343.0	2,258.2	6.6	11.6	-37.50	496.5	-239.2	380.1	367.3	12.74	29.838			
2,500.0	2,477.4	2,441.6	2,351.2	7.0	12.3	-37.97	526.5	-252.3	396.6	383.2	13.44	29.515			
2,600.0	2,575.3	2,540.2	2,444.2	7.4	12.9	-38.40	556.4	-265.4	413.1	399.0	14.14	29.214			
2,700.0	2,673.3	2,638.8	2,537.2	7.8	13.6	-38.80	586.4	-278.5	429.7	414.9	14.85	28.931			
2,800.0	2,771.3	2,737.3	2,630.2	8.2	14.3	-39.17	616.3	-291.7	446.3	430.8	15.57	28.667			
2,900.0	2,869.2	2,835.9	2,723.2	8.7	14.9	-39.51	646.2	-304.8	462.9	446.6	16.29	28.419			
3,000.0	2,967.2	2,934.5	2,816.2	9.1	15.6	-39.83	676.2	-317.9	479.6	462.5	17.01	28.186			
3,100.0	3,065.2	3,033.1	2,909.2	9.5	16.2	-40.13	706.1	-331.0	496.2	478.5	17.74	27.968			
3,200.0	3,163.1	3,131.6	3,002.2	9.9	16.9	-40.41	736.1	-344.1	512.9	494.4	18.47	27.763			
3,300.0	3,261.1	3,230.2	3,095.2	10.3	17.5	-40.67	766.0	-357.2	529.5	510.3	19.21	27.569			
3,400.0	3,359.1	3,328.8	3,188.2	10.7	18.2	-40.92	796.0	-370.4	546.2	526.2	19.94	27.387			
3,500.0	3,457.0	3,427.4	3,281.2	11.2	18.9	-41.15	825.9	-383.5	562.9	542.2	20.68	27.216			
3,600.0	3,555.0	3,525.9	3,374.2	11.6	19.5	-41.36	855.8	-396.6	579.6	558.1	21.42	27.053			
3,700.0	3,653.0	3,624.5	3,467.2	12.0	20.2	-41.57	885.8	-409.7	596.3	574.1	22.17	26.900			
3,800.0	3,750.9	3,723.1	3,560.2	12.4	20.8	-41.76	915.7	-422.8	613.0	590.1	22.91	26.755			
3,900.0	3,848.9	3,821.7	3,653.2	12.9	21.5	-41.95	945.7	-435.9	629.7	606.0	23.66	26.617			
4,000.0	3,946.9	3,920.2	3,746.2	13.3	22.2	-42.12	975.6	-449.0	646.4	622.0	24.41	26.486			
4,100.0	4,044.9	4,018.8	3,839.2	13.7	22.8	-42.28	1,005.5	-462.2	663.1	638.0	25.15	26.362			
4,200.0	4,142.8	4,117.4	3,932.2	14.1	23.5	-42.44	1,035.5	-475.3	679.9	654.0	25.91	26.244			
4,300.0	4,240.8	4,216.0	4,025.2	14.6	24.1	-42.59	1,065.4	-488.4	696.6	669.9	26.66	26.131			
4,400.0	4,338.8	4,314.5	4,118.2	15.0	24.8	-42.73	1,095.4	-501.5	713.3	685.9	27.41	26.024			
4,500.0	4,436.7	4,413.1	4,211.2	15.4	25.5	-42.87	1,125.3	-514.6	730.1	701.9	28.16	25.922			
4,600.0	4,534.7	4,511.7	4,304.2	15.8	26.1	-43.00	1,155.2	-527.7	746.8	717.9	28.92	25.824			
4,700.0	4,632.7	4,610.2	4,397.2	16.3	26.8	-43.12	1,185.2	-540.9	763.6	733.9	29.68	25.731			
4,800.0	4,730.6	4,708.8	4,490.2	16.7	27.5	-43.24	1,215.1	-554.0	780.3	749.9	30.43	25.641			
4,900.0	4,828.6	4,807.4	4,583.2	17.1	28.1	-43.36	1,245.1	-567.1	797.1	765.9	31.19	25.556			
5,000.0	4,926.6	4,906.0	4,676.2	17.5	28.8	-43.47	1,275.0	-580.2	813.8	781.9	31.95	25.474			
5,101.0	5,025.5	5,005.5	4,770.1	18.0	29.4	-43.57	1,305.2	-593.4	830.8	798.1	32.71	25.394			
5,200.0	5,122.8	5,107.7	4,866.5	18.3	30.1	-43.84	1,336.2	-607.0	848.6	815.1	33.42	25.392			
5,300.0	5,221.7	5,243.9	4,996.3	18.6	30.8	-43.99	1,374.1	-623.6	866.3	832.2	34.06	25.434			
5,400.0	5,321.0	5,381.6	5,129.3	18.9	31.3	-44.06	1,406.5	-637.8	882.1	847.5	34.61	25.490			
5,500.0	5,420.7	5,520.7	5,265.3	19.1	31.9	-44.05	1,433.3	-649.6	896.0	861.0	35.05	25.563			
5,600.0	5,520.6	5,661.1	5,403.8	19.2	32.3	-43.96	1,454.2	-658.7	907.9	872.5	35.39	25.653			
5,679.4	5,600.0	5,773.3	5,515.2	19.3	32.5	-45.09	1,466.5	-664.1	915.9	880.4	35.59	25.737			
5,700.0	5,620.6	5,802.5	5,544.3	19.4	32.6	-45.03	1,469.0	-665.2	917.8	882.1	35.65	25.743			
5,800.0	5,720.6	5,945.0	5,686.4	19.5	32.8	-44.82	1,477.4	-668.9	923.8	887.8	35.96	25.688			
5,900.0	5,820.6	6,079.2	5,820.6	19.6	32.9	-44.77	1,479.5	-669.8	925.2	889.0	36.28	25.501			
6,000.0	5,920.6	6,179.2	5,920.6	19.8	33.0	-44.77	1,479.5	-669.8	925.2	888.7	36.58	25.294			
6,100.0	6,020.6	6,279.2	6,020.6	19.9	33.1	-44.77	1,479.5	-669.8	925.2	888.4	36.88	25.087			
6,200.0	6,120.6	6,379.2	6,120.6	20.1	33.2	-44.77	1,479.5	-669.8	925.2	888.0	37.19	24.881			
6,300.0	6,220.6	6,479.2	6,220.6	20.2	33.3	-44.77	1,479.5	-669.8	925.2	887.7	37.49	24.677			
6,400.0	6,320.6	6,579.2	6,320.6	20.4	33.4	-44.77	1,479.5	-669.8	925.2	887.4	37.80	24.475			
6,500.0	6,420.6	6,679.2	6,420.6	20.5	33.5	-44.77	1,479.5	-669.8	925.2	887.1	38.12	24.274			
6,600.0	6,520.6	6,779.2	6,520.6	20.7	33.5	-44.77	1,479.5	-669.8	925.2	886.8	38.43	24.074			
6,700.0	6,620.6	6,879.2	6,620.6	20.8	33.6	-44.77	1,479.5	-669.8	925.2	886.5	38.75	23.876			
6,800.0	6,720.6	6,979.2	6,720.6	21.0	33.7	-44.77	1,479.5	-669.8	925.2	886.2	39.07	23.680			
6,900.0	6,820.6	7,079.2	6,820.6	21.1	33.8	-44.77	1,479.5	-669.8	925.2	885.8	39.40	23.486			

Company:	Synergy Resources	Local Co-ordinate Reference:	Well SRC Margil 34DD
Project:	SEC.34-T4N-R68W	TVD Reference:	WELL @ 5104.0ft (Original Well Elev)
Reference Site:	SRC Margil 34-34D Pad Sec.34-T4N-R68W	MD Reference:	WELL @ 5104.0ft (Original Well Elev)
Site Error:	0.0ft	North Reference:	True
Reference Well:	SRC Margil 34DD	Survey Calculation Method:	Minimum Curvature
Well Error:	0.0ft	Output errors are at	2.00 sigma
Reference Wellbore	Wellbore #1	Database:	Landmark
Reference Design:	Plan #1 (12-28-11)	Offset TVD Reference:	Offset Datum

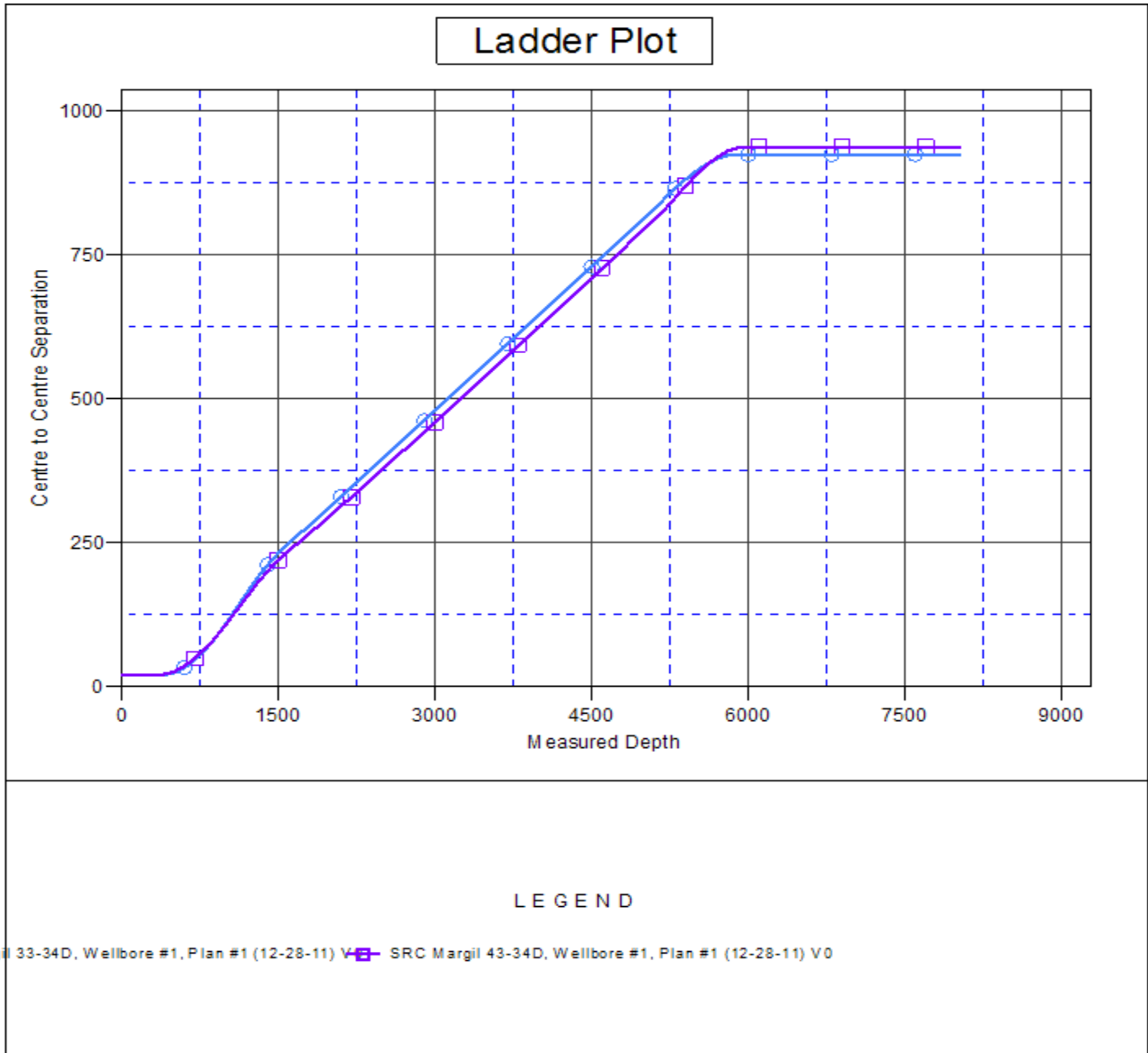
Offset Design												Offset Site Error:	0.0 ft
SRC Margil 34-34D Pad Sec.34-T4N-R68W - SRC Margil 33-34D - Wellbore #1 - Plan #1 (12-28-11)												Offset Well Error:	0.0 ft
Survey Program: 0-MWD													
Reference		Offset		Semi Major Axis			Distance						
Measured Depth (ft)	Vertical Depth (ft)	Measured Depth (ft)	Vertical Depth (ft)	Reference (ft)	Offset (ft)	Highside Toolface (°)	Offset Wellbore Centre +N/-S (ft)	+E/-W (ft)	Between Centres (ft)	Between Ellipses (ft)	Minimum Separation (ft)	Separation Factor	Warning
7,000.0	6,920.6	7,179.2	6,920.6	21.3	33.9	-44.77	1,479.5	-669.8	925.2	885.5	39.72	23.293	
7,100.0	7,020.6	7,279.2	7,020.6	21.4	34.0	-44.77	1,479.5	-669.8	925.2	885.2	40.05	23.102	
7,200.0	7,120.6	7,379.2	7,120.6	21.6	34.1	-44.77	1,479.5	-669.8	925.2	884.9	40.38	22.913	
7,300.0	7,220.6	7,479.2	7,220.6	21.7	34.2	-44.77	1,479.5	-669.8	925.2	884.5	40.71	22.726	
7,400.0	7,320.6	7,579.2	7,320.6	21.9	34.3	-44.77	1,479.5	-669.8	925.2	884.2	41.05	22.540	
7,500.0	7,420.6	7,679.2	7,420.6	22.1	34.4	-44.77	1,479.5	-669.8	925.2	883.8	41.38	22.357	
7,600.0	7,520.6	7,779.2	7,520.6	22.2	34.5	-44.77	1,479.5	-669.8	925.2	883.5	41.72	22.175	
7,700.0	7,620.6	7,879.2	7,620.6	22.4	34.6	-44.77	1,479.5	-669.8	925.2	883.2	42.07	21.995	
7,800.0	7,720.6	7,979.2	7,720.6	22.5	34.7	-44.77	1,479.5	-669.8	925.2	882.8	42.41	21.817	
7,900.0	7,820.6	8,079.2	7,820.6	22.7	34.8	-44.77	1,479.5	-669.8	925.2	882.5	42.75	21.641	
8,000.0	7,920.6	8,179.2	7,920.6	22.9	34.9	-44.77	1,479.5	-669.8	925.2	882.1	43.10	21.467	
8,029.4	7,950.0	8,208.6	7,950.0	22.9	34.9	-44.77	1,479.5	-669.8	925.2	882.0	43.20	21.416	

SRC Margil 34-34D Pad Sec.34-T4N-R68W - SRC Margil 43-34D - Wellbore #1 - Plan #1 (12-28-11)													Offset Site Error:	0.0 ft
Survey Program: 0-MWD													Offset Well Error:	0.0 ft
Reference		Offset		Semi Major Axis			Distance							
Measured Depth (ft)	Vertical Depth (ft)	Measured Depth (ft)	Vertical Depth (ft)	Reference (ft)	Offset (ft)	Highside Toolface (°)	Offset Wellbore Centre +N/-S (ft)	+E/-W (ft)	Between Centres (ft)	Between Ellipses (ft)	Minimum Separation (ft)	Separation Factor	Warning	
0.0	0.0	0.0	0.0	0.0	0.0	64.96	8.5	18.1	20.0					
100.0	100.0	100.0	100.0	0.1	0.1	64.96	8.5	18.1	20.0	19.8	0.22	89.083		
200.0	200.0	200.0	200.0	0.3	0.3	64.96	8.5	18.1	20.0	19.3	0.67	29.694	CC	
300.0	300.0	299.9	299.9	0.6	0.6	60.04	10.1	17.5	20.3	19.1	1.12	18.030	ES	
400.0	400.0	399.6	399.4	0.8	0.8	46.41	15.0	15.8	21.8	20.2	1.58	13.778		
500.0	500.0	498.6	498.1	1.0	1.0	29.83	23.0	13.2	26.6	24.6	2.05	12.977	SF	
600.0	600.0	596.9	595.8	1.2	1.3	19.93	33.8	12.3	36.2	33.7	2.51	14.396		
700.0	700.0	694.6	692.5	1.5	1.6	15.72	47.1	13.3	49.5	46.6	2.98	16.648		
800.0	800.0	791.4	788.0	1.7	1.9	14.44	63.0	16.2	66.2	62.7	3.44	19.239		
900.0	900.0	887.1	881.8	1.9	2.3	14.51	81.2	21.0	85.9	82.0	3.91	21.984		
1,000.0	1,000.0	981.5	973.7	2.1	2.7	15.19	101.7	27.6	108.6	104.2	4.38	24.814		
1,100.0	1,100.0	1,074.8	1,063.9	2.4	3.1	17.45	124.2	35.9	132.7	127.8	4.84	27.434		
1,200.0	1,199.8	1,167.4	1,152.6	2.6	3.6	18.85	149.0	45.9	156.6	151.3	5.31	29.488		
1,300.0	1,299.5	1,260.5	1,240.9	2.8	4.1	20.50	176.0	57.6	180.3	174.5	5.80	31.102		
1,400.0	1,398.7	1,357.9	1,333.0	3.1	4.7	22.24	205.1	70.4	201.9	195.6	6.29	32.075		
1,500.0	1,497.5	1,455.9	1,425.6	3.3	5.3	24.00	234.3	83.2	220.6	213.8	6.82	32.349		
1,578.4	1,574.5	1,533.1	1,498.6	3.6	5.8	25.43	257.3	93.4	233.2	225.9	7.24	32.195		
1,600.0	1,595.6	1,554.4	1,518.7	3.6	5.9	25.86	263.6	96.1	236.4	229.0	7.37	32.093		
1,700.0	1,693.6	1,652.9	1,611.9	4.0	6.5	27.69	293.0	109.1	251.6	243.6	7.96	31.621		
1,800.0	1,791.6	1,751.4	1,705.0	4.3	7.2	29.31	322.4	122.0	266.9	258.4	8.56	31.173		
1,900.0	1,889.5	1,850.0	1,798.2	4.7	7.8	30.76	351.8	135.0	282.5	273.3	9.19	30.744		
2,000.0	1,987.5	1,948.5	1,891.4	5.0	8.4	32.05	381.1	147.9	298.2	288.4	9.83	30.336		
2,100.0	2,085.5	2,047.1	1,984.5	5.4	9.0	33.22	410.5	160.8	314.0	303.5	10.49	29.949		
2,200.0	2,183.5	2,145.6	2,077.7	5.8	9.7	34.27	439.9	173.8	330.0	318.8	11.15	29.583		
2,300.0	2,281.4	2,244.2	2,170.9	6.2	10.3	35.23	469.3	186.7	346.1	334.2	11.84	29.238		
2,400.0	2,379.4	2,342.7	2,264.0	6.6	10.9	36.10	498.6	199.7	362.2	349.7	12.53	28.913		
2,500.0	2,477.4	2,441.3	2,357.2	7.0	11.6	36.90	528.0	212.6	378.4	365.2	13.23	28.608		
2,600.0	2,575.3	2,539.8	2,450.4	7.4	12.2	37.63	557.4	225.5	394.7	380.8	13.94	28.321		
2,700.0	2,673.3	2,638.3	2,543.6	7.8	12.8	38.30	586.8	238.5	411.0	396.4	14.65	28.053		
2,800.0	2,771.3	2,736.9	2,636.7	8.2	13.5	38.93	616.1	251.4	427.4	412.1	15.38	27.800		
2,900.0	2,869.2	2,835.4	2,729.9	8.7	14.1	39.50	645.5	264.3	443.9	427.8	16.10	27.563		
3,000.0	2,967.2	2,934.0	2,823.1	9.1	14.7	40.04	674.9	277.3	460.4	443.5	16.84	27.341		
3,100.0	3,065.2	3,032.5	2,916.2	9.5	15.4	40.54	704.3	290.2	476.9	459.3	17.58	27.132		
3,200.0	3,163.1	3,131.1	3,009.4	9.9	16.0	41.00	733.6	303.2	493.4	475.1	18.32	26.935		
3,300.0	3,261.1	3,229.6	3,102.6	10.3	16.6	41.44	763.0	316.1	510.0	490.9	19.07	26.750		
3,400.0	3,359.1	3,328.2	3,195.7	10.7	17.3	41.84	792.4	329.0	526.6	506.8	19.82	26.575		
3,500.0	3,457.0	3,426.7	3,288.9	11.2	17.9	42.23	821.8	342.0	543.3	522.7	20.57	26.411		
3,600.0	3,555.0	3,525.2	3,382.1	11.6	18.5	42.59	851.1	354.9	559.9	538.6	21.33	26.255		
3,700.0	3,653.0	3,623.8	3,475.3	12.0	19.2	42.92	880.5	367.8	576.6	554.5	22.08	26.108		
3,800.0	3,750.9	3,722.3	3,568.4	12.4	19.8	43.24	909.9	380.8	593.3	570.4	22.85	25.969		
3,900.0	3,848.9	3,820.9	3,661.6	12.9	20.5	43.55	939.3	393.7	610.0	586.4	23.61	25.837		
4,000.0	3,946.9	3,919.4	3,754.8	13.3	21.1	43.83	968.6	406.7	626.7	602.3	24.37	25.711		
4,100.0	4,044.9	4,018.0	3,847.9	13.7	21.7	44.10	998.0	419.6	643.4	618.3	25.14	25.593		
4,200.0	4,142.8	4,116.5	3,941.1	14.1	22.4	44.36	1,027.4	432.5	660.2	634.3	25.91	25.480		
4,300.0	4,240.8	4,215.1	4,034.3	14.6	23.0	44.61	1,056.8	445.5	677.0	650.3	26.68	25.372		
4,400.0	4,338.8	4,313.6	4,127.5	15.0	23.6	44.84	1,086.1	458.4	693.7	666.3	27.45	25.270		
4,500.0	4,436.7	4,412.1	4,220.6	15.4	24.3	45.06	1,115.5	471.3	710.5	682.3	28.23	25.172		
4,600.0	4,534.7	4,510.7	4,313.8	15.8	24.9	45.27	1,144.9	484.3	727.3	698.3	29.00	25.079		
4,700.0	4,632.7	4,609.2	4,407.0	16.3	25.5	45.48	1,174.3	497.2	744.1	714.4	29.78	24.990		
4,800.0	4,730.6	4,707.8	4,500.1	16.7	26.2	45.67	1,203.6	510.2	760.9	730.4	30.55	24.905		
4,900.0	4,828.6	4,806.3	4,593.3	17.1	26.8	45.86	1,233.0	523.1	777.8	746.4	31.33	24.823		
5,000.0	4,926.6	4,904.9	4,686.5	17.5	27.5	46.03	1,262.4	536.0	794.6	762.5	32.11	24.746		

Offset Design													Offset Site Error:	
Survey Program: 0-MWD													Offset Well Error:	
Reference		Offset		Semi Major Axis			Distance							
Measured Depth (ft)	Vertical Depth (ft)	Measured Depth (ft)	Vertical Depth (ft)	Reference (ft)	Offset (ft)	Highside Toolface (°)	Offset Wellbore Centre +N/-S (ft)	+E/-W (ft)	Between Centres (ft)	Between Ellipses (ft)	Minimum Separation (ft)	Separation Factor	Warning	
5,101.0	5,025.5	5,004.4	4,780.6	18.0	28.1	46.20	1,292.1	549.1	811.6	778.7	32.90	24.670		
5,200.0	5,122.8	5,101.8	4,872.6	18.3	28.7	46.54	1,321.1	561.9	829.4	795.8	33.61	24.676		
5,300.0	5,221.7	5,199.7	4,965.2	18.6	29.4	46.74	1,350.3	574.7	849.8	815.6	34.22	24.833		
5,400.0	5,321.0	5,334.5	5,093.7	18.9	30.1	46.76	1,387.8	591.3	870.5	835.6	34.81	25.009		
5,500.0	5,420.7	5,471.9	5,226.3	19.1	30.7	46.68	1,420.3	605.6	889.1	853.9	35.27	25.212		
5,600.0	5,520.6	5,610.9	5,362.2	19.2	31.1	46.52	1,447.2	617.4	905.8	870.1	35.63	25.424		
5,679.4	5,600.0	5,722.4	5,472.1	19.3	31.5	45.06	1,464.4	625.0	917.5	881.7	35.84	25.602		
5,700.0	5,620.6	5,751.5	5,500.9	19.4	31.6	44.97	1,468.2	626.7	920.3	884.4	35.89	25.639		
5,800.0	5,720.6	5,893.8	5,642.3	19.5	31.9	44.60	1,483.1	633.3	931.0	894.8	36.20	25.718		
5,900.0	5,820.6	6,037.4	5,785.6	19.6	32.1	44.40	1,491.7	637.0	937.1	900.6	36.52	25.661		
6,000.0	5,920.6	6,172.5	5,920.6	19.8	32.3	44.35	1,493.8	637.9	938.6	901.7	36.84	25.476		
6,100.0	6,020.6	6,272.5	6,020.6	19.9	32.3	44.35	1,493.8	637.9	938.6	901.4	37.14	25.271		
6,200.0	6,120.6	6,372.5	6,120.6	20.1	32.4	44.35	1,493.8	637.9	938.6	901.1	37.44	25.066		
6,300.0	6,220.6	6,472.5	6,220.6	20.2	32.5	44.35	1,493.8	637.9	938.6	900.8	37.75	24.863		
6,400.0	6,320.6	6,572.5	6,320.6	20.4	32.6	44.35	1,493.8	637.9	938.6	900.5	38.06	24.661		
6,500.0	6,420.6	6,672.5	6,420.6	20.5	32.7	44.35	1,493.8	637.9	938.6	900.2	38.37	24.460		
6,600.0	6,520.6	6,772.5	6,520.6	20.7	32.8	44.35	1,493.8	637.9	938.6	899.9	38.69	24.261		
6,700.0	6,620.6	6,872.5	6,620.6	20.8	32.9	44.35	1,493.8	637.9	938.6	899.6	39.00	24.064		
6,800.0	6,720.6	6,972.5	6,720.6	21.0	33.0	44.35	1,493.8	637.9	938.6	899.2	39.32	23.868		
6,900.0	6,820.6	7,072.5	6,820.6	21.1	33.1	44.35	1,493.8	637.9	938.6	898.9	39.65	23.674		
7,000.0	6,920.6	7,172.5	6,920.6	21.3	33.2	44.35	1,493.8	637.9	938.6	898.6	39.97	23.481		
7,100.0	7,020.6	7,272.5	7,020.6	21.4	33.2	44.35	1,493.8	637.9	938.6	898.3	40.30	23.290		
7,200.0	7,120.6	7,372.5	7,120.6	21.6	33.3	44.35	1,493.8	637.9	938.6	897.9	40.63	23.102		
7,300.0	7,220.6	7,472.5	7,220.6	21.7	33.4	44.35	1,493.8	637.9	938.6	897.6	40.96	22.914		
7,400.0	7,320.6	7,572.5	7,320.6	21.9	33.5	44.35	1,493.8	637.9	938.6	897.3	41.29	22.729		
7,500.0	7,420.6	7,672.5	7,420.6	22.1	33.6	44.35	1,493.8	637.9	938.6	896.9	41.63	22.546		
7,600.0	7,520.6	7,772.5	7,520.6	22.2	33.7	44.35	1,493.8	637.9	938.6	896.6	41.97	22.364		
7,700.0	7,620.6	7,872.5	7,620.6	22.4	33.9	44.35	1,493.8	637.9	938.6	896.3	42.31	22.184		
7,800.0	7,720.6	7,972.5	7,720.6	22.5	34.0	44.35	1,493.8	637.9	938.6	895.9	42.65	22.006		
7,900.0	7,820.6	8,072.5	7,820.6	22.7	34.1	44.35	1,493.8	637.9	938.6	895.6	42.99	21.830		
8,000.0	7,920.6	8,172.5	7,920.6	22.9	34.2	44.35	1,493.8	637.9	938.6	895.2	43.34	21.655		
8,029.4	7,950.0	8,201.9	7,950.0	22.9	34.2	44.35	1,493.8	637.9	938.6	895.1	43.44	21.605		

Company:	Synergy Resources	Local Co-ordinate Reference:	Well SRC Margil 34DD
Project:	SEC.34-T4N-R68W	TVD Reference:	WELL @ 5104.0ft (Original Well Elev)
Reference Site:	SRC Margil 34-34D Pad Sec.34-T4N-R68W	MD Reference:	WELL @ 5104.0ft (Original Well Elev)
Site Error:	0.0ft	North Reference:	True
Reference Well:	SRC Margil 34DD	Survey Calculation Method:	Minimum Curvature
Well Error:	0.0ft	Output errors are at	2.00 sigma
Reference Wellbore	Wellbore #1	Database:	Landmark
Reference Design:	Plan #1 (12-28-11)	Offset TVD Reference:	Offset Datum

Reference Depths are relative to WELL @ 5104.0ft (Original Well Elev) Coordinates are relative to: SRC Margil 34DD
 Offset Depths are relative to Offset Datum Coordinate System is US State Plane 1983, Colorado Northern Zone
 Central Meridian is -105.500000 ° Grid Convergence at Surface is: 0.33°



Company:	Synergy Resources	Local Co-ordinate Reference:	Well SRC Margil 34DD
Project:	SEC.34-T4N-R68W	TVD Reference:	WELL @ 5104.0ft (Original Well Elev)
Reference Site:	SRC Margil 34-34D Pad Sec.34-T4N-R68W	MD Reference:	WELL @ 5104.0ft (Original Well Elev)
Site Error:	0.0ft	North Reference:	True
Reference Well:	SRC Margil 34DD	Survey Calculation Method:	Minimum Curvature
Well Error:	0.0ft	Output errors are at	2.00 sigma
Reference Wellbore	Wellbore #1	Database:	Landmark
Reference Design:	Plan #1 (12-28-11)	Offset TVD Reference:	Offset Datum

Reference Depths are relative to WELL @ 5104.0ft (Original Well Elev) Coordinates are relative to: SRC Margil 34DD
Offset Depths are relative to Offset Datum Coordinate System is US State Plane 1983, Colorado Northern Zone
Central Meridian is -105.500000 ° Grid Convergence at Surface is: 0.33°

