

### Well Name: SRC Margil 34-34D

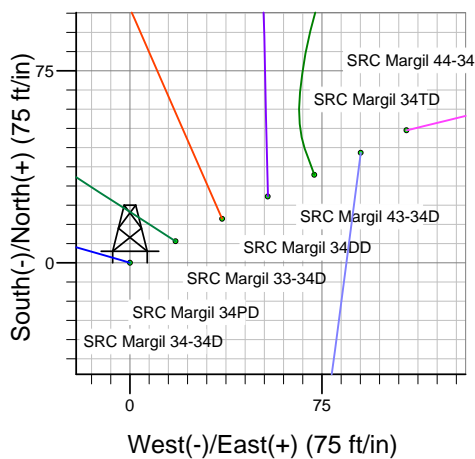
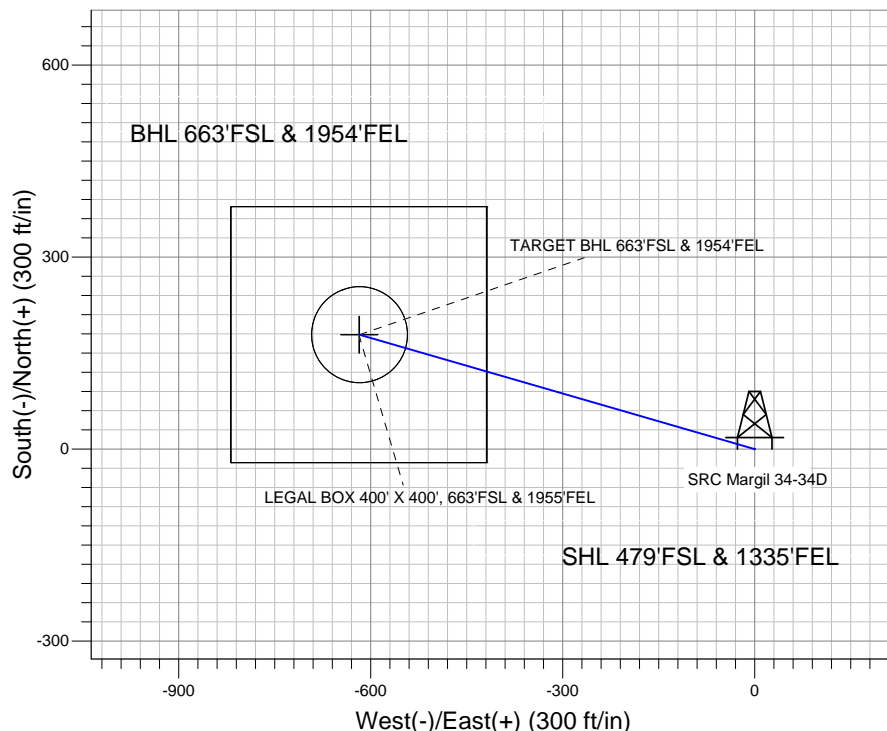
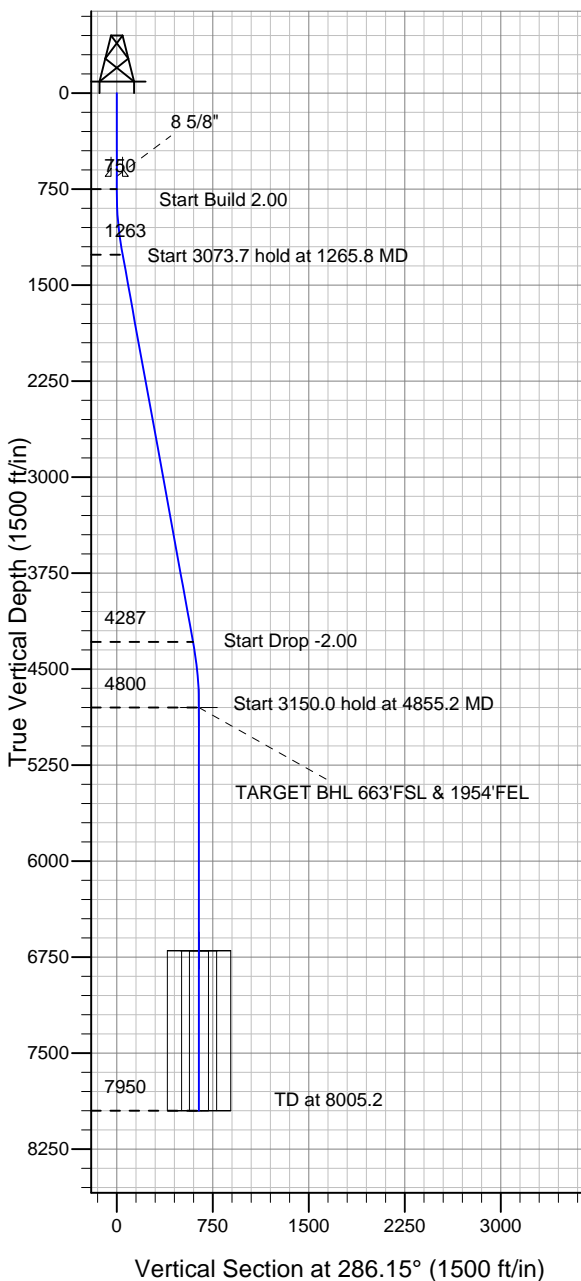
Surface Location: SRC Margil 34-34D Pad Sec.34-T4N-R68W  
 North American Datum 1983 US State Plane 1983 Colorado Northern Zone

Ground Elevation: 5090.0

+N/-S	+E/-W	Northing	Easting	Latitude	Longitude	Slot
0.0	0.0	1339412.38	3143817.01	40.263939	-104.984652	

Original Well Elev WELL @ 5103.0ft (Original Well Elev)

### Synergy Resources



SRC Margil 34-34D Pad Sec.34-T4N-R68W  
 SRC Margil 34-34D  
 Plan #1 (12-28-11)  
 9:24, December 29 2011



Azimuths to True North  
 Magnetic North: 8.90°

Magnetic Field  
 Strength: 52977.3snT  
 Dip Angle: 66.89°  
 Date: 12/28/2011  
 Model: IGRF2010

### WELLBORE TARGET DETAILS (LAT/LONG)

Name	TVD	+N/-S	+E/-W	Latitude	Longitude	Shape
TARGET BHL 663'FSL & 1954'FEL	4800.0	178.9	-617.6	40.264430	-104.986865	Point
LEGAL BOX 400' X 400', 663'FSL & 1955'FEL	6700.0	178.9	-618.6	40.264430	-104.986869	Rectangle (Sides: L400.0 W400.0)
TARGET CIRCLE 663'FSL & 1954'FEL	6700.0	178.9	-617.6	40.264430	-104.986865	Circle (Radius: 75.0)

### SECTION DETAILS

Sec	MD	Inc	Azi	TVD	+N/-S	+E/-W	DLeg	TFace	VSec	Target
1	0.0	0.00	0.00	0.0	0.0	0.0	0.00	0.00	0.0	
2	750.0	0.00	0.00	750.0	0.0	0.0	0.00	0.00	0.0	
3	1265.8	10.32	286.15	1263.0	12.9	-44.5	2.00	286.15	46.3	
4	4339.5	10.32	286.15	4287.0	166.0	-573.1	0.00	0.00	596.7	
5	4855.2	0.00	0.00	4800.0	178.9	-617.6	2.00	180.00	643.0	TARGET BHL 663'FSL & 1954'FEL
6	8005.2	0.00	0.00	7950.0	178.9	-617.6	0.00	0.00	643.0	



## **Directional**

### **Synergy Resources**

**SEC.34-T4N-R68W**

**SRC Margil 34-34D Pad Sec.34-T4N-R68W**

**SRC Margil 34-34D**

**Wellbore #1**

**Plan: Plan #1 (12-28-11)**

### **Standard Planning Report**

**29 December, 2011**

Plan Sections										
Measured Depth (ft)	Inclination (°)	Azimuth (°)	Vertical Depth (ft)	+N/-S (ft)	+E/-W (ft)	Dogleg Rate (°/100ft)	Build Rate (°/100ft)	Turn Rate (°/100ft)	TFO (°)	Target
0.0	0.00	0.00	0.0	0.0	0.0	0.00	0.00	0.00	0.00	
750.0	0.00	0.00	750.0	0.0	0.0	0.00	0.00	0.00	0.00	
1,265.8	10.32	286.15	1,263.0	12.9	-44.5	2.00	2.00	0.00	286.15	
4,339.5	10.32	286.15	4,287.0	166.0	-573.1	0.00	0.00	0.00	0.00	
4,855.2	0.00	0.00	4,800.0	178.9	-617.6	2.00	-2.00	0.00	180.00	TARGET BHL 663'F
8,005.2	0.00	0.00	7,950.0	178.9	-617.6	0.00	0.00	0.00	0.00	

**Database:** Landmark  
**Company:** Synergy Resources  
**Project:** SEC.34-T4N-R68W  
**Site:** SRC Margil 34-34D Pad Sec.34-T4N-R68W  
**Well:** SRC Margil 34-34D  
**Wellbore:** Wellbore #1  
**Design:** Plan #1 (12-28-11)

**Local Co-ordinate Reference:** Well SRC Margil 34-34D  
**TVD Reference:** WELL @ 5103.0ft (Original Well Elev)  
**MD Reference:** WELL @ 5103.0ft (Original Well Elev)  
**North Reference:** True  
**Survey Calculation Method:** Minimum Curvature

Planned Survey									
Measured Depth (ft)	Inclination (°)	Azimuth (°)	Vertical Depth (ft)	+N/-S (ft)	+E/-W (ft)	Vertical Section (ft)	Dogleg Rate (°/100ft)	Build Rate (°/100ft)	Turn Rate (°/100ft)
0.0	0.00	0.00	0.0	0.0	0.0	0.0	0.00	0.00	0.00
40.0	0.00	0.00	40.0	0.0	0.0	0.0	0.00	0.00	0.00
80.0	0.00	0.00	80.0	0.0	0.0	0.0	0.00	0.00	0.00
120.0	0.00	0.00	120.0	0.0	0.0	0.0	0.00	0.00	0.00
160.0	0.00	0.00	160.0	0.0	0.0	0.0	0.00	0.00	0.00
200.0	0.00	0.00	200.0	0.0	0.0	0.0	0.00	0.00	0.00
240.0	0.00	0.00	240.0	0.0	0.0	0.0	0.00	0.00	0.00
280.0	0.00	0.00	280.0	0.0	0.0	0.0	0.00	0.00	0.00
320.0	0.00	0.00	320.0	0.0	0.0	0.0	0.00	0.00	0.00
360.0	0.00	0.00	360.0	0.0	0.0	0.0	0.00	0.00	0.00
400.0	0.00	0.00	400.0	0.0	0.0	0.0	0.00	0.00	0.00
440.0	0.00	0.00	440.0	0.0	0.0	0.0	0.00	0.00	0.00
480.0	0.00	0.00	480.0	0.0	0.0	0.0	0.00	0.00	0.00
520.0	0.00	0.00	520.0	0.0	0.0	0.0	0.00	0.00	0.00
560.0	0.00	0.00	560.0	0.0	0.0	0.0	0.00	0.00	0.00
600.0	0.00	0.00	600.0	0.0	0.0	0.0	0.00	0.00	0.00
640.0	0.00	0.00	640.0	0.0	0.0	0.0	0.00	0.00	0.00
650.0	0.00	0.00	650.0	0.0	0.0	0.0	0.00	0.00	0.00
8 5/8"									
680.0	0.00	0.00	680.0	0.0	0.0	0.0	0.00	0.00	0.00
720.0	0.00	0.00	720.0	0.0	0.0	0.0	0.00	0.00	0.00
750.0	0.00	0.00	750.0	0.0	0.0	0.0	0.00	0.00	0.00
760.0	0.20	286.15	760.0	0.0	0.0	0.0	2.00	2.00	0.00
800.0	1.00	286.15	800.0	0.1	-0.4	0.4	2.00	2.00	0.00
840.0	1.80	286.15	840.0	0.4	-1.4	1.4	2.00	2.00	0.00
880.0	2.60	286.15	880.0	0.8	-2.8	2.9	2.00	2.00	0.00
920.0	3.40	286.15	919.9	1.4	-4.8	5.0	2.00	2.00	0.00
960.0	4.20	286.15	959.8	2.1	-7.4	7.7	2.00	2.00	0.00
1,000.0	5.00	286.15	999.7	3.0	-10.5	10.9	2.00	2.00	0.00
1,040.0	5.80	286.15	1,039.5	4.1	-14.1	14.7	2.00	2.00	0.00
1,080.0	6.60	286.15	1,079.3	5.3	-18.2	19.0	2.00	2.00	0.00
1,120.0	7.40	286.15	1,119.0	6.6	-22.9	23.9	2.00	2.00	0.00
1,160.0	8.20	286.15	1,158.6	8.1	-28.1	29.3	2.00	2.00	0.00
1,200.0	9.00	286.15	1,198.2	9.8	-33.9	35.3	2.00	2.00	0.00
1,240.0	9.80	286.15	1,237.6	11.6	-40.2	41.8	2.00	2.00	0.00
1,265.8	10.32	286.15	1,263.0	12.9	-44.5	46.3	2.00	2.00	0.00
1,280.0	10.32	286.15	1,277.0	13.6	-46.9	48.9	0.00	0.00	0.00
1,320.0	10.32	286.15	1,316.3	15.6	-53.8	56.0	0.00	0.00	0.00
1,360.0	10.32	286.15	1,355.7	17.6	-60.7	63.2	0.00	0.00	0.00
1,400.0	10.32	286.15	1,395.0	19.6	-67.6	70.3	0.00	0.00	0.00
1,440.0	10.32	286.15	1,434.4	21.6	-74.4	77.5	0.00	0.00	0.00
1,480.0	10.32	286.15	1,473.8	23.6	-81.3	84.7	0.00	0.00	0.00
1,520.0	10.32	286.15	1,513.1	25.5	-88.2	91.8	0.00	0.00	0.00
1,560.0	10.32	286.15	1,552.5	27.5	-95.1	99.0	0.00	0.00	0.00
1,600.0	10.32	286.15	1,591.8	29.5	-102.0	106.2	0.00	0.00	0.00
1,640.0	10.32	286.15	1,631.2	31.5	-108.8	113.3	0.00	0.00	0.00
1,680.0	10.32	286.15	1,670.5	33.5	-115.7	120.5	0.00	0.00	0.00
1,720.0	10.32	286.15	1,709.9	35.5	-122.6	127.6	0.00	0.00	0.00
1,760.0	10.32	286.15	1,749.2	37.5	-129.5	134.8	0.00	0.00	0.00
1,800.0	10.32	286.15	1,788.6	39.5	-136.4	142.0	0.00	0.00	0.00
1,840.0	10.32	286.15	1,827.9	41.5	-143.2	149.1	0.00	0.00	0.00
1,880.0	10.32	286.15	1,867.3	43.5	-150.1	156.3	0.00	0.00	0.00
1,920.0	10.32	286.15	1,906.6	45.5	-157.0	163.5	0.00	0.00	0.00
1,960.0	10.32	286.15	1,946.0	47.5	-163.9	170.6	0.00	0.00	0.00

<b>Database:</b>	Landmark	<b>Local Co-ordinate Reference:</b>	Well SRC Margil 34-34D
<b>Company:</b>	Synergy Resources	<b>TVD Reference:</b>	WELL @ 5103.0ft (Original Well Elev)
<b>Project:</b>	SEC.34-T4N-R68W	<b>MD Reference:</b>	WELL @ 5103.0ft (Original Well Elev)
<b>Site:</b>	SRC Margil 34-34D Pad Sec.34-T4N-R68W	<b>North Reference:</b>	True
<b>Well:</b>	SRC Margil 34-34D	<b>Survey Calculation Method:</b>	Minimum Curvature
<b>Wellbore:</b>	Wellbore #1		
<b>Design:</b>	Plan #1 (12-28-11)		

Planned Survey										
Measured Depth (ft)	Inclination (°)	Azimuth (°)	Vertical Depth (ft)	+N/-S (ft)	+E/-W (ft)	Vertical Section (ft)	Dogleg Rate (°/100ft)	Build Rate (°/100ft)	Turn Rate (°/100ft)	
2,000.0	10.32	286.15	1,985.4	49.5	-170.8	177.8	0.00	0.00	0.00	
2,040.0	10.32	286.15	2,024.7	51.5	-177.6	184.9	0.00	0.00	0.00	
2,080.0	10.32	286.15	2,064.1	53.4	-184.5	192.1	0.00	0.00	0.00	
2,120.0	10.32	286.15	2,103.4	55.4	-191.4	199.3	0.00	0.00	0.00	
2,160.0	10.32	286.15	2,142.8	57.4	-198.3	206.4	0.00	0.00	0.00	
2,200.0	10.32	286.15	2,182.1	59.4	-205.2	213.6	0.00	0.00	0.00	
2,240.0	10.32	286.15	2,221.5	61.4	-212.0	220.8	0.00	0.00	0.00	
2,280.0	10.32	286.15	2,260.8	63.4	-218.9	227.9	0.00	0.00	0.00	
2,320.0	10.32	286.15	2,300.2	65.4	-225.8	235.1	0.00	0.00	0.00	
2,360.0	10.32	286.15	2,339.5	67.4	-232.7	242.2	0.00	0.00	0.00	
2,400.0	10.32	286.15	2,378.9	69.4	-239.6	249.4	0.00	0.00	0.00	
2,440.0	10.32	286.15	2,418.2	71.4	-246.4	256.6	0.00	0.00	0.00	
2,480.0	10.32	286.15	2,457.6	73.4	-253.3	263.7	0.00	0.00	0.00	
2,520.0	10.32	286.15	2,496.9	75.4	-260.2	270.9	0.00	0.00	0.00	
2,560.0	10.32	286.15	2,536.3	77.4	-267.1	278.1	0.00	0.00	0.00	
2,600.0	10.32	286.15	2,575.7	79.4	-274.0	285.2	0.00	0.00	0.00	
2,640.0	10.32	286.15	2,615.0	81.3	-280.8	292.4	0.00	0.00	0.00	
2,680.0	10.32	286.15	2,654.4	83.3	-287.7	299.5	0.00	0.00	0.00	
2,720.0	10.32	286.15	2,693.7	85.3	-294.6	306.7	0.00	0.00	0.00	
2,760.0	10.32	286.15	2,733.1	87.3	-301.5	313.9	0.00	0.00	0.00	
2,800.0	10.32	286.15	2,772.4	89.3	-308.4	321.0	0.00	0.00	0.00	
2,840.0	10.32	286.15	2,811.8	91.3	-315.2	328.2	0.00	0.00	0.00	
2,880.0	10.32	286.15	2,851.1	93.3	-322.1	335.4	0.00	0.00	0.00	
2,920.0	10.32	286.15	2,890.5	95.3	-329.0	342.5	0.00	0.00	0.00	
2,960.0	10.32	286.15	2,929.8	97.3	-335.9	349.7	0.00	0.00	0.00	
3,000.0	10.32	286.15	2,969.2	99.3	-342.7	356.8	0.00	0.00	0.00	
3,040.0	10.32	286.15	3,008.5	101.3	-349.6	364.0	0.00	0.00	0.00	
3,080.0	10.32	286.15	3,047.9	103.3	-356.5	371.2	0.00	0.00	0.00	
3,120.0	10.32	286.15	3,087.2	105.3	-363.4	378.3	0.00	0.00	0.00	
3,160.0	10.32	286.15	3,126.6	107.3	-370.3	385.5	0.00	0.00	0.00	
3,200.0	10.32	286.15	3,166.0	109.2	-377.1	392.7	0.00	0.00	0.00	
3,240.0	10.32	286.15	3,205.3	111.2	-384.0	399.8	0.00	0.00	0.00	
3,280.0	10.32	286.15	3,244.7	113.2	-390.9	407.0	0.00	0.00	0.00	
3,320.0	10.32	286.15	3,284.0	115.2	-397.8	414.1	0.00	0.00	0.00	
3,360.0	10.32	286.15	3,323.4	117.2	-404.7	421.3	0.00	0.00	0.00	
3,400.0	10.32	286.15	3,362.7	119.2	-411.5	428.5	0.00	0.00	0.00	
3,440.0	10.32	286.15	3,402.1	121.2	-418.4	435.6	0.00	0.00	0.00	
3,480.0	10.32	286.15	3,441.4	123.2	-425.3	442.8	0.00	0.00	0.00	
3,520.0	10.32	286.15	3,480.8	125.2	-432.2	450.0	0.00	0.00	0.00	
3,560.0	10.32	286.15	3,520.1	127.2	-439.1	457.1	0.00	0.00	0.00	
3,600.0	10.32	286.15	3,559.5	129.2	-445.9	464.3	0.00	0.00	0.00	
3,640.0	10.32	286.15	3,598.8	131.2	-452.8	471.4	0.00	0.00	0.00	
3,680.0	10.32	286.15	3,638.2	133.2	-459.7	478.6	0.00	0.00	0.00	
3,720.0	10.32	286.15	3,677.6	135.2	-466.6	485.8	0.00	0.00	0.00	
3,760.0	10.32	286.15	3,716.9	137.1	-473.5	492.9	0.00	0.00	0.00	
3,800.0	10.32	286.15	3,756.3	139.1	-480.3	500.1	0.00	0.00	0.00	
3,840.0	10.32	286.15	3,795.6	141.1	-487.2	507.3	0.00	0.00	0.00	
3,880.0	10.32	286.15	3,835.0	143.1	-494.1	514.4	0.00	0.00	0.00	
3,920.0	10.32	286.15	3,874.3	145.1	-501.0	521.6	0.00	0.00	0.00	
3,960.0	10.32	286.15	3,913.7	147.1	-507.9	528.7	0.00	0.00	0.00	
4,000.0	10.32	286.15	3,953.0	149.1	-514.7	535.9	0.00	0.00	0.00	
4,040.0	10.32	286.15	3,992.4	151.1	-521.6	543.1	0.00	0.00	0.00	
4,080.0	10.32	286.15	4,031.7	153.1	-528.5	550.2	0.00	0.00	0.00	
4,120.0	10.32	286.15	4,071.1	155.1	-535.4	557.4	0.00	0.00	0.00	

<b>Database:</b>	Landmark	<b>Local Co-ordinate Reference:</b>	Well SRC Margil 34-34D
<b>Company:</b>	Synergy Resources	<b>TVD Reference:</b>	WELL @ 5103.0ft (Original Well Elev)
<b>Project:</b>	SEC.34-T4N-R68W	<b>MD Reference:</b>	WELL @ 5103.0ft (Original Well Elev)
<b>Site:</b>	SRC Margil 34-34D Pad Sec.34-T4N-R68W	<b>North Reference:</b>	True
<b>Well:</b>	SRC Margil 34-34D	<b>Survey Calculation Method:</b>	Minimum Curvature
<b>Wellbore:</b>	Wellbore #1		
<b>Design:</b>	Plan #1 (12-28-11)		

Planned Survey									
Measured Depth (ft)	Inclination (°)	Azimuth (°)	Vertical Depth (ft)	+N/-S (ft)	+E/-W (ft)	Vertical Section (ft)	Dogleg Rate (°/100ft)	Build Rate (°/100ft)	Turn Rate (°/100ft)
4,160.0	10.32	286.15	4,110.4	157.1	-542.3	564.6	0.00	0.00	0.00
4,200.0	10.32	286.15	4,149.8	159.1	-549.1	571.7	0.00	0.00	0.00
4,240.0	10.32	286.15	4,189.1	161.1	-556.0	578.9	0.00	0.00	0.00
4,280.0	10.32	286.15	4,228.5	163.1	-562.9	586.0	0.00	0.00	0.00
4,320.0	10.32	286.15	4,267.9	165.0	-569.8	593.2	0.00	0.00	0.00
4,339.5	10.32	286.15	4,287.0	166.0	-573.1	596.7	0.00	0.00	0.00
4,360.0	9.90	286.15	4,307.2	167.0	-576.6	600.3	2.00	-2.00	0.00
4,400.0	9.10	286.15	4,346.7	168.9	-582.9	606.9	2.00	-2.00	0.00
4,440.0	8.30	286.15	4,386.2	170.5	-588.7	613.0	2.00	-2.00	0.00
4,480.0	7.50	286.15	4,425.8	172.1	-594.0	618.5	2.00	-2.00	0.00
4,520.0	6.70	286.15	4,465.5	173.4	-598.8	623.4	2.00	-2.00	0.00
4,560.0	5.90	286.15	4,505.3	174.7	-603.0	627.8	2.00	-2.00	0.00
4,600.0	5.10	286.15	4,545.1	175.7	-606.7	631.6	2.00	-2.00	0.00
4,640.0	4.30	286.15	4,585.0	176.6	-609.8	634.9	2.00	-2.00	0.00
4,680.0	3.50	286.15	4,624.9	177.4	-612.5	637.6	2.00	-2.00	0.00
4,720.0	2.70	286.15	4,664.8	178.0	-614.5	639.8	2.00	-2.00	0.00
4,760.0	1.90	286.15	4,704.8	178.5	-616.1	641.4	2.00	-2.00	0.00
4,800.0	1.10	286.15	4,744.8	178.7	-617.1	642.5	2.00	-2.00	0.00
4,840.0	0.30	286.15	4,784.8	178.9	-617.6	643.0	2.00	-2.00	0.00
4,855.2	0.00	0.00	4,800.0	178.9	-617.6	643.0	2.00	-2.00	484.50
TARGET BHL 663'FSL & 1954'FEL									
4,880.0	0.00	0.00	4,824.8	178.9	-617.6	643.0	0.00	0.00	0.00
4,920.0	0.00	0.00	4,864.8	178.9	-617.6	643.0	0.00	0.00	0.00
4,960.0	0.00	0.00	4,904.8	178.9	-617.6	643.0	0.00	0.00	0.00
5,000.0	0.00	0.00	4,944.8	178.9	-617.6	643.0	0.00	0.00	0.00
5,040.0	0.00	0.00	4,984.8	178.9	-617.6	643.0	0.00	0.00	0.00
5,080.0	0.00	0.00	5,024.8	178.9	-617.6	643.0	0.00	0.00	0.00
5,120.0	0.00	0.00	5,064.8	178.9	-617.6	643.0	0.00	0.00	0.00
5,160.0	0.00	0.00	5,104.8	178.9	-617.6	643.0	0.00	0.00	0.00
5,200.0	0.00	0.00	5,144.8	178.9	-617.6	643.0	0.00	0.00	0.00
5,240.0	0.00	0.00	5,184.8	178.9	-617.6	643.0	0.00	0.00	0.00
5,280.0	0.00	0.00	5,224.8	178.9	-617.6	643.0	0.00	0.00	0.00
5,320.0	0.00	0.00	5,264.8	178.9	-617.6	643.0	0.00	0.00	0.00
5,360.0	0.00	0.00	5,304.8	178.9	-617.6	643.0	0.00	0.00	0.00
5,400.0	0.00	0.00	5,344.8	178.9	-617.6	643.0	0.00	0.00	0.00
5,440.0	0.00	0.00	5,384.8	178.9	-617.6	643.0	0.00	0.00	0.00
5,480.0	0.00	0.00	5,424.8	178.9	-617.6	643.0	0.00	0.00	0.00
5,520.0	0.00	0.00	5,464.8	178.9	-617.6	643.0	0.00	0.00	0.00
5,560.0	0.00	0.00	5,504.8	178.9	-617.6	643.0	0.00	0.00	0.00
5,600.0	0.00	0.00	5,544.8	178.9	-617.6	643.0	0.00	0.00	0.00
5,640.0	0.00	0.00	5,584.8	178.9	-617.6	643.0	0.00	0.00	0.00
5,680.0	0.00	0.00	5,624.8	178.9	-617.6	643.0	0.00	0.00	0.00
5,720.0	0.00	0.00	5,664.8	178.9	-617.6	643.0	0.00	0.00	0.00
5,760.0	0.00	0.00	5,704.8	178.9	-617.6	643.0	0.00	0.00	0.00
5,800.0	0.00	0.00	5,744.8	178.9	-617.6	643.0	0.00	0.00	0.00
5,840.0	0.00	0.00	5,784.8	178.9	-617.6	643.0	0.00	0.00	0.00
5,880.0	0.00	0.00	5,824.8	178.9	-617.6	643.0	0.00	0.00	0.00
5,920.0	0.00	0.00	5,864.8	178.9	-617.6	643.0	0.00	0.00	0.00
5,960.0	0.00	0.00	5,904.8	178.9	-617.6	643.0	0.00	0.00	0.00
6,000.0	0.00	0.00	5,944.8	178.9	-617.6	643.0	0.00	0.00	0.00
6,040.0	0.00	0.00	5,984.8	178.9	-617.6	643.0	0.00	0.00	0.00
6,080.0	0.00	0.00	6,024.8	178.9	-617.6	643.0	0.00	0.00	0.00
6,120.0	0.00	0.00	6,064.8	178.9	-617.6	643.0	0.00	0.00	0.00
6,160.0	0.00	0.00	6,104.8	178.9	-617.6	643.0	0.00	0.00	0.00

**Database:** Landmark  
**Company:** Synergy Resources  
**Project:** SEC.34-T4N-R68W  
**Site:** SRC Margil 34-34D Pad Sec.34-T4N-R68W  
**Well:** SRC Margil 34-34D  
**Wellbore:** Wellbore #1  
**Design:** Plan #1 (12-28-11)

**Local Co-ordinate Reference:** Well SRC Margil 34-34D  
**TVD Reference:** WELL @ 5103.0ft (Original Well Elev)  
**MD Reference:** WELL @ 5103.0ft (Original Well Elev)  
**North Reference:** True  
**Survey Calculation Method:** Minimum Curvature

## Planned Survey

Measured Depth (ft)	Inclination (°)	Azimuth (°)	Vertical Depth (ft)	+N/-S (ft)	+E/-W (ft)	Vertical Section (ft)	Dogleg Rate (°/100ft)	Build Rate (°/100ft)	Turn Rate (°/100ft)
6,200.0	0.00	0.00	6,144.8	178.9	-617.6	643.0	0.00	0.00	0.00
6,240.0	0.00	0.00	6,184.8	178.9	-617.6	643.0	0.00	0.00	0.00
6,280.0	0.00	0.00	6,224.8	178.9	-617.6	643.0	0.00	0.00	0.00
6,320.0	0.00	0.00	6,264.8	178.9	-617.6	643.0	0.00	0.00	0.00
6,360.0	0.00	0.00	6,304.8	178.9	-617.6	643.0	0.00	0.00	0.00
6,400.0	0.00	0.00	6,344.8	178.9	-617.6	643.0	0.00	0.00	0.00
6,440.0	0.00	0.00	6,384.8	178.9	-617.6	643.0	0.00	0.00	0.00
6,480.0	0.00	0.00	6,424.8	178.9	-617.6	643.0	0.00	0.00	0.00
6,520.0	0.00	0.00	6,464.8	178.9	-617.6	643.0	0.00	0.00	0.00
6,560.0	0.00	0.00	6,504.8	178.9	-617.6	643.0	0.00	0.00	0.00
6,600.0	0.00	0.00	6,544.8	178.9	-617.6	643.0	0.00	0.00	0.00
6,640.0	0.00	0.00	6,584.8	178.9	-617.6	643.0	0.00	0.00	0.00
6,680.0	0.00	0.00	6,624.8	178.9	-617.6	643.0	0.00	0.00	0.00
6,720.0	0.00	0.00	6,664.8	178.9	-617.6	643.0	0.00	0.00	0.00
6,755.2	0.00	0.00	6,700.0	178.9	-617.6	643.0	0.00	0.00	0.00
TARGET CIRCLE 663'FSL & 1954'FEL - LEGAL BOX 400' X 400', 663'FSL & 1955'FEL									
6,760.0	0.00	0.00	6,704.8	178.9	-617.6	643.0	0.00	0.00	0.00
6,800.0	0.00	0.00	6,744.8	178.9	-617.6	643.0	0.00	0.00	0.00
6,840.0	0.00	0.00	6,784.8	178.9	-617.6	643.0	0.00	0.00	0.00
6,880.0	0.00	0.00	6,824.8	178.9	-617.6	643.0	0.00	0.00	0.00
6,920.0	0.00	0.00	6,864.8	178.9	-617.6	643.0	0.00	0.00	0.00
6,960.0	0.00	0.00	6,904.8	178.9	-617.6	643.0	0.00	0.00	0.00
7,000.0	0.00	0.00	6,944.8	178.9	-617.6	643.0	0.00	0.00	0.00
7,040.0	0.00	0.00	6,984.8	178.9	-617.6	643.0	0.00	0.00	0.00
7,080.0	0.00	0.00	7,024.8	178.9	-617.6	643.0	0.00	0.00	0.00
7,120.0	0.00	0.00	7,064.8	178.9	-617.6	643.0	0.00	0.00	0.00
7,160.0	0.00	0.00	7,104.8	178.9	-617.6	643.0	0.00	0.00	0.00
7,200.0	0.00	0.00	7,144.8	178.9	-617.6	643.0	0.00	0.00	0.00
7,240.0	0.00	0.00	7,184.8	178.9	-617.6	643.0	0.00	0.00	0.00
7,280.0	0.00	0.00	7,224.8	178.9	-617.6	643.0	0.00	0.00	0.00
7,320.0	0.00	0.00	7,264.8	178.9	-617.6	643.0	0.00	0.00	0.00
7,360.0	0.00	0.00	7,304.8	178.9	-617.6	643.0	0.00	0.00	0.00
7,400.0	0.00	0.00	7,344.8	178.9	-617.6	643.0	0.00	0.00	0.00
7,440.0	0.00	0.00	7,384.8	178.9	-617.6	643.0	0.00	0.00	0.00
7,480.0	0.00	0.00	7,424.8	178.9	-617.6	643.0	0.00	0.00	0.00
7,520.0	0.00	0.00	7,464.8	178.9	-617.6	643.0	0.00	0.00	0.00
7,560.0	0.00	0.00	7,504.8	178.9	-617.6	643.0	0.00	0.00	0.00
7,600.0	0.00	0.00	7,544.8	178.9	-617.6	643.0	0.00	0.00	0.00
7,640.0	0.00	0.00	7,584.8	178.9	-617.6	643.0	0.00	0.00	0.00
7,680.0	0.00	0.00	7,624.8	178.9	-617.6	643.0	0.00	0.00	0.00
7,720.0	0.00	0.00	7,664.8	178.9	-617.6	643.0	0.00	0.00	0.00
7,760.0	0.00	0.00	7,704.8	178.9	-617.6	643.0	0.00	0.00	0.00
7,800.0	0.00	0.00	7,744.8	178.9	-617.6	643.0	0.00	0.00	0.00
7,840.0	0.00	0.00	7,784.8	178.9	-617.6	643.0	0.00	0.00	0.00
7,880.0	0.00	0.00	7,824.8	178.9	-617.6	643.0	0.00	0.00	0.00
7,920.0	0.00	0.00	7,864.8	178.9	-617.6	643.0	0.00	0.00	0.00
7,960.0	0.00	0.00	7,904.8	178.9	-617.6	643.0	0.00	0.00	0.00
8,000.0	0.00	0.00	7,944.8	178.9	-617.6	643.0	0.00	0.00	0.00
8,005.2	0.00	0.00	7,950.0	178.9	-617.6	643.0	0.00	0.00	0.00

<b>Database:</b>	Landmark	<b>Local Co-ordinate Reference:</b>	Well SRC Margil 34-34D
<b>Company:</b>	Synergy Resources	<b>TVD Reference:</b>	WELL @ 5103.0ft (Original Well Elev)
<b>Project:</b>	SEC.34-T4N-R68W	<b>MD Reference:</b>	WELL @ 5103.0ft (Original Well Elev)
<b>Site:</b>	SRC Margil 34-34D Pad Sec.34-T4N-R68W	<b>North Reference:</b>	True
<b>Well:</b>	SRC Margil 34-34D	<b>Survey Calculation Method:</b>	Minimum Curvature
<b>Wellbore:</b>	Wellbore #1		
<b>Design:</b>	Plan #1 (12-28-11)		

Casing Points					
	Measured Depth (ft)	Vertical Depth (ft)		Casing Diameter (")	Hole Diameter (")
Name					
	650.0	650.0	8 5/8"	8-5/8	12-1/4





# **Directional**

## **Synergy Resources**

**SEC.34-T4N-R68W**

**SRC Margil 34-34D Pad Sec.34-T4N-R68W**

**SRC Margil 34-34D**

**Wellbore #1**

**Plan #1 (12-28-11)**

## **Anticollision Report**

**29 December, 2011**



<b>Company:</b>	Synergy Resources	<b>Local Co-ordinate Reference:</b>	Well SRC Margil 34-34D
<b>Project:</b>	SEC.34-T4N-R68W	<b>TVD Reference:</b>	WELL @ 5103.0ft (Original Well Elev)
<b>Reference Site:</b>	SRC Margil 34-34D Pad Sec.34-T4N-R68W	<b>MD Reference:</b>	WELL @ 5103.0ft (Original Well Elev)
<b>Site Error:</b>	0.0ft	<b>North Reference:</b>	True
<b>Reference Well:</b>	SRC Margil 34-34D	<b>Survey Calculation Method:</b>	Minimum Curvature
<b>Well Error:</b>	0.0ft	<b>Output errors are at</b>	2.00 sigma
<b>Reference Wellbore</b>	Wellbore #1	<b>Database:</b>	Landmark
<b>Reference Design:</b>	Plan #1 (12-28-11)	<b>Offset TVD Reference:</b>	Offset Datum

Offset Design												Offset Site Error:	0.0ft
Survey Program: 0-MWD												Offset Well Error:	0.0ft
Reference		Offset		Semi Major Axis			Distance						Warning
Measured Depth (ft)	Vertical Depth (ft)	Measured Depth (ft)	Vertical Depth (ft)	Reference (ft)	Offset (ft)	Highside Toolface (°)	Offset Wellbore Centre +N/-S (ft)	+E/-W (ft)	Between Centres (ft)	Between Ellipses (ft)	Minimum Separation (ft)	Separation Factor	
1,900.0	1,887.0	1,844.3	1,787.7	5.1	8.3	77.00	370.9	-119.0	343.2	332.4	10.81	31.747	
2,000.0	1,985.4	1,940.9	1,878.9	5.5	8.9	77.28	400.3	-131.8	369.0	357.4	11.60	31.800	
2,100.0	2,083.7	2,037.6	1,970.0	5.9	9.6	77.53	429.6	-144.7	394.7	382.3	12.40	31.832	
2,200.0	2,182.1	2,134.2	2,061.2	6.3	10.2	77.75	459.0	-157.5	420.4	407.2	13.20	31.849	
2,300.0	2,280.5	2,230.8	2,152.3	6.7	10.9	77.94	488.3	-170.4	446.2	432.2	14.01	31.856	
2,400.0	2,378.9	2,327.4	2,243.5	7.1	11.5	78.11	517.7	-183.3	471.9	457.1	14.81	31.856	
2,500.0	2,477.3	2,424.0	2,334.7	7.5	12.2	78.27	547.0	-196.1	497.7	482.1	15.63	31.851	
2,600.0	2,575.7	2,520.7	2,425.8	7.9	12.8	78.41	576.4	-209.0	523.4	507.0	16.44	31.842	
2,700.0	2,674.0	2,617.3	2,517.0	8.3	13.5	78.53	605.7	-221.8	549.2	532.0	17.25	31.830	
2,800.0	2,772.4	2,713.9	2,608.1	8.7	14.1	78.65	635.1	-234.7	575.0	556.9	18.07	31.816	
2,900.0	2,870.8	2,810.5	2,699.3	9.1	14.7	78.75	664.4	-247.5	600.7	581.8	18.89	31.801	
3,000.0	2,969.2	2,907.1	2,790.4	9.5	15.4	78.85	693.8	-260.4	626.5	606.8	19.71	31.786	
3,100.0	3,067.6	3,003.7	2,881.6	9.9	16.0	78.94	723.1	-273.2	652.3	631.7	20.53	31.769	
3,200.0	3,166.0	3,100.4	2,972.7	10.3	16.7	79.02	752.4	-286.1	678.0	656.7	21.35	31.753	
3,300.0	3,264.3	3,197.0	3,063.9	10.7	17.3	79.09	781.8	-299.0	703.8	681.6	22.18	31.737	
3,400.0	3,362.7	3,293.6	3,155.0	11.1	18.0	79.16	811.1	-311.8	729.6	706.6	23.00	31.720	
3,500.0	3,461.1	3,390.2	3,246.2	11.5	18.6	79.23	840.5	-324.7	755.3	731.5	23.82	31.704	
3,600.0	3,559.5	3,486.8	3,337.3	11.9	19.3	79.29	869.8	-337.5	781.1	756.5	24.65	31.688	
3,700.0	3,657.9	3,583.5	3,428.5	12.3	19.9	79.35	899.2	-350.4	806.9	781.4	25.48	31.673	
3,800.0	3,756.3	3,680.1	3,519.6	12.7	20.6	79.40	928.5	-363.2	832.7	806.4	26.30	31.657	
3,900.0	3,854.6	3,776.7	3,610.8	13.1	21.2	79.45	957.9	-376.1	858.4	831.3	27.13	31.642	
4,000.0	3,953.0	3,873.3	3,701.9	13.5	21.9	79.50	987.2	-388.9	884.2	856.2	27.96	31.628	
4,100.0	4,051.4	3,969.9	3,793.1	13.9	22.5	79.55	1,016.6	-401.8	910.0	881.2	28.78	31.614	
4,200.0	4,149.8	4,066.6	3,884.2	14.3	23.1	79.59	1,045.9	-414.7	935.8	906.1	29.61	31.600	
4,300.0	4,248.2	4,163.2	3,975.4	14.7	23.8	79.63	1,075.3	-427.5	961.5	931.1	30.44	31.587	
4,339.5	4,287.0	4,201.3	4,011.4	14.9	24.1	79.64	1,086.8	-432.6	971.7	940.9	30.77	31.582	
4,400.0	4,346.7	4,259.8	4,066.5	15.1	24.4	79.95	1,104.6	-440.4	987.4	956.1	31.28	31.567	
4,500.0	4,445.7	4,356.1	4,157.4	15.4	25.1	80.30	1,133.9	-453.2	1,013.9	981.8	32.02	31.665	
4,600.0	4,545.1	4,452.2	4,248.1	15.6	25.7	80.49	1,163.1	-466.0	1,040.9	1,008.2	32.68	31.846	
4,700.0	4,644.8	4,547.8	4,338.3	15.8	26.4	80.51	1,192.1	-478.7	1,068.5	1,035.2	33.28	32.110	
4,800.0	4,744.8	4,642.9	4,428.0	15.9	27.0	80.40	1,221.0	-491.3	1,096.8	1,063.0	33.80	32.454	
4,855.2	4,800.0	4,695.1	4,477.2	16.0	27.4	6.44	1,236.8	-498.3	1,112.8	1,078.7	34.05	32.677	
4,900.0	4,844.8	4,737.3	4,517.1	16.1	27.6	6.06	1,249.7	-503.9	1,125.8	1,091.6	34.20	32.922	
5,000.0	4,944.8	4,831.7	4,606.1	16.2	28.3	5.26	1,278.3	-516.5	1,155.1	1,120.6	34.53	33.454	
5,100.0	5,044.8	4,926.0	4,695.1	16.4	28.9	4.49	1,307.0	-529.0	1,184.6	1,149.8	34.86	33.978	
5,200.0	5,144.8	5,020.4	4,784.1	16.5	29.5	3.76	1,335.6	-541.6	1,214.3	1,179.1	35.20	34.494	
5,300.0	5,244.8	5,130.5	4,888.0	16.7	30.2	2.96	1,368.8	-556.1	1,244.1	1,208.5	35.55	34.996	
5,400.0	5,344.8	5,289.2	5,039.8	16.8	31.0	1.99	1,411.3	-574.7	1,270.5	1,234.6	35.90	35.385	
5,500.0	5,444.8	5,452.9	5,198.8	17.0	31.6	1.23	1,446.9	-590.3	1,292.1	1,255.8	36.27	35.624	
5,600.0	5,544.8	5,620.7	5,363.9	17.1	32.2	0.67	1,474.7	-602.5	1,308.6	1,272.0	36.64	35.713	
5,700.0	5,644.8	5,791.6	5,533.4	17.3	32.6	0.29	1,493.9	-610.9	1,319.9	1,282.8	37.01	35.659	
5,800.0	5,744.8	5,964.5	5,705.9	17.4	32.8	0.10	1,503.9	-615.3	1,325.6	1,288.2	37.37	35.471	
5,900.0	5,844.8	6,104.3	5,845.8	17.6	33.0	0.07	1,505.3	-615.9	1,326.4	1,288.7	37.69	35.190	
6,000.0	5,944.8	6,204.3	5,945.8	17.7	33.0	0.07	1,505.3	-615.9	1,326.4	1,288.4	37.99	34.916	
6,100.0	6,044.8	6,304.3	6,045.8	17.9	33.1	0.07	1,505.3	-615.9	1,326.4	1,288.1	38.29	34.644	
6,200.0	6,144.8	6,404.3	6,145.8	18.1	33.2	0.07	1,505.3	-615.9	1,326.4	1,287.8	38.59	34.373	
6,300.0	6,244.8	6,504.3	6,245.8	18.2	33.3	0.07	1,505.3	-615.9	1,326.4	1,287.5	38.89	34.103	
6,400.0	6,344.8	6,604.3	6,345.8	18.4	33.4	0.07	1,505.3	-615.9	1,326.4	1,287.2	39.20	33.836	
6,500.0	6,444.8	6,704.3	6,445.8	18.6	33.5	0.07	1,505.3	-615.9	1,326.4	1,286.9	39.51	33.570	
6,600.0	6,544.8	6,804.3	6,545.8	18.7	33.6	0.07	1,505.3	-615.9	1,326.4	1,286.6	39.82	33.307	
6,700.0	6,644.8	6,904.3	6,645.8	18.9	33.7	0.07	1,505.3	-615.9	1,326.4	1,286.3	40.14	33.045	
6,800.0	6,744.8	7,004.3	6,745.8	19.1	33.7	0.07	1,505.3	-615.9	1,326.4	1,286.0	40.46	32.786	

CC - Min centre to center distance or convergent point, SF - min separation factor, ES - min ellipse separation

<b>Company:</b>	Synergy Resources	<b>Local Co-ordinate Reference:</b>	Well SRC Margil 34-34D
<b>Project:</b>	SEC.34-T4N-R68W	<b>TVD Reference:</b>	WELL @ 5103.0ft (Original Well Elev)
<b>Reference Site:</b>	SRC Margil 34-34D Pad Sec.34-T4N-R68W	<b>MD Reference:</b>	WELL @ 5103.0ft (Original Well Elev)
<b>Site Error:</b>	0.0ft	<b>North Reference:</b>	True
<b>Reference Well:</b>	SRC Margil 34-34D	<b>Survey Calculation Method:</b>	Minimum Curvature
<b>Well Error:</b>	0.0ft	<b>Output errors are at</b>	2.00 sigma
<b>Reference Wellbore</b>	Wellbore #1	<b>Database:</b>	Landmark
<b>Reference Design:</b>	Plan #1 (12-28-11)	<b>Offset TVD Reference:</b>	Offset Datum

<b>Offset Design</b>												<b>Offset Site Error:</b>	0.0 ft
SRC Margil 34-34D Pad Sec.34-T4N-R68W - SRC Margil 33-34D - Wellbore #1 - Plan #1 (12-28-11)												<b>Offset Well Error:</b>	0.0 ft
Survey Program: 0-MWD													
Reference		Offset		Semi Major Axis			Distance						
Measured Depth (ft)	Vertical Depth (ft)	Measured Depth (ft)	Vertical Depth (ft)	Reference (ft)	Offset (ft)	Highside Toolface (°)	Offset Wellbore Centre +N/-S (ft)	+E/-W (ft)	Between Centres (ft)	Between Ellipses (ft)	Minimum Separation (ft)	Separation Factor	Warning
6,900.0	6,844.8	7,104.3	6,845.8	19.2	33.8	0.07	1,505.3	-615.9	1,326.4	1,285.7	40.78	32.528	
7,000.0	6,944.8	7,204.3	6,945.8	19.4	33.9	0.07	1,505.3	-615.9	1,326.4	1,285.3	41.10	32.273	
7,100.0	7,044.8	7,304.3	7,045.8	19.6	34.0	0.07	1,505.3	-615.9	1,326.4	1,285.0	41.43	32.020	
7,200.0	7,144.8	7,404.3	7,145.8	19.8	34.1	0.07	1,505.3	-615.9	1,326.4	1,284.7	41.75	31.769	
7,300.0	7,244.8	7,504.3	7,245.8	19.9	34.2	0.07	1,505.3	-615.9	1,326.4	1,284.3	42.08	31.520	
7,400.0	7,344.8	7,604.3	7,345.8	20.1	34.3	0.07	1,505.3	-615.9	1,326.4	1,284.0	42.41	31.274	
7,500.0	7,444.8	7,704.3	7,445.8	20.3	34.4	0.07	1,505.3	-615.9	1,326.4	1,283.7	42.75	31.029	
7,600.0	7,544.8	7,804.3	7,545.8	20.5	34.5	0.07	1,505.3	-615.9	1,326.4	1,283.3	43.08	30.788	
7,700.0	7,644.8	7,904.3	7,645.8	20.6	34.6	0.07	1,505.3	-615.9	1,326.4	1,283.0	43.42	30.548	
7,800.0	7,744.8	8,004.3	7,745.8	20.8	34.7	0.07	1,505.3	-615.9	1,326.4	1,282.7	43.76	30.311	
7,900.0	7,844.8	8,104.3	7,845.8	21.0	34.8	0.07	1,505.3	-615.9	1,326.4	1,282.3	44.10	30.076	
7,969.8	7,914.6	8,174.2	7,915.6	21.1	34.9	0.07	1,505.3	-615.9	1,326.4	1,282.1	44.34	29.913	
8,005.2	7,950.0	8,208.6	7,950.0	21.2	34.9	0.07	1,505.3	-615.9	1,326.4	1,282.0	44.46	29.832	

Offset Design		SRC Margil 34-34D Pad Sec.34-T4N-R68W - SRC Margil 34PD - Wellbore #1 - Plan #1 (12-28-11)											Offset Site Error:	0.0 ft
Survey Program: 0-MWD													Offset Well Error:	0.0 ft
Reference		Offset		Semi Major Axis			Distance							Warning
Measured Depth (ft)	Vertical Depth (ft)	Measured Depth (ft)	Vertical Depth (ft)	Reference (ft)	Offset (ft)	Highside Toolface (°)	Offset Wellbore Centre +N/-S (ft)	+E/-W (ft)	Between Centres (ft)	Between Ellipses (ft)	Minimum Separation (ft)	Separation Factor		
0.0	0.0	1.0	1.0	0.0	0.0	64.85	8.4	17.9	19.7	19.7	0.00	N/A		
100.0	100.0	101.0	101.0	0.1	0.1	64.85	8.4	17.9	19.7	19.5	0.23	86.922		
200.0	200.0	201.0	201.0	0.3	0.3	64.85	8.4	17.9	19.7	19.1	0.68	29.166		
300.0	300.0	301.0	301.0	0.6	0.6	64.85	8.4	17.9	19.7	18.6	1.13	17.523		
400.0	400.0	401.0	401.0	0.8	0.8	64.85	8.4	17.9	19.7	18.2	1.58	12.524		
500.0	500.0	501.0	501.0	1.0	1.0	64.85	8.4	17.9	19.7	17.7	2.03	9.744		
600.0	600.0	601.0	601.0	1.2	1.2	64.85	8.4	17.9	19.7	17.3	2.47	7.974		
700.0	700.0	701.0	701.0	1.5	1.5	64.85	8.4	17.9	19.7	16.8	2.92	6.748		
750.0	750.0	751.0	751.0	1.6	1.6	64.85	8.4	17.9	19.7	16.6	3.15	6.266 CC, ES		
800.0	800.0	801.0	801.0	1.7	1.7	139.51	8.4	17.9	20.1	16.7	3.37	5.955 SF		
900.0	899.9	900.9	900.9	1.9	1.9	145.17	8.4	17.9	22.8	19.0	3.80	6.006		
1,000.0	999.7	1,001.1	1,001.0	2.1	2.1	152.46	8.6	17.5	28.5	24.3	4.23	6.736		
1,100.0	1,099.1	1,101.6	1,101.6	2.4	2.4	156.29	10.6	14.5	35.3	30.7	4.65	7.591		
1,200.0	1,198.2	1,202.4	1,202.1	2.6	2.6	157.66	14.4	8.5	42.7	37.7	5.08	8.410		
1,265.8	1,263.0	1,268.8	1,268.1	2.8	2.7	157.74	18.0	3.0	47.9	42.5	5.37	8.915		
1,300.0	1,296.7	1,303.4	1,302.5	2.9	2.8	157.53	20.2	-0.5	50.5	44.9	5.53	9.125		
1,400.0	1,395.0	1,404.7	1,402.8	3.3	3.1	155.47	27.9	-12.4	56.2	50.1	6.02	9.331		
1,500.0	1,493.4	1,506.0	1,502.5	3.6	3.4	151.45	37.5	-27.4	59.4	52.8	6.56	9.048		
1,600.0	1,591.8	1,607.2	1,601.5	4.0	3.7	145.33	49.0	-45.3	60.5	53.3	7.19	8.416		
1,700.0	1,690.2	1,708.1	1,699.2	4.3	4.1	136.73	62.3	-66.0	60.5	52.5	7.97	7.589		
1,752.6	1,742.0	1,760.9	1,750.1	4.5	4.4	131.07	70.0	-78.0	60.4	51.9	8.46	7.140		
1,800.0	1,788.6	1,808.2	1,795.4	4.7	4.6	125.30	77.4	-89.5	60.6	51.6	8.94	6.772		
1,900.0	1,887.0	1,907.5	1,889.8	5.1	5.1	111.30	94.1	-115.5	62.6	52.5	10.06	6.216		
2,000.0	1,985.4	2,005.7	1,982.0	5.5	5.7	96.18	112.4	-143.9	68.5	57.4	11.15	6.145		
2,100.0	2,083.7	2,103.7	2,073.5	5.9	6.3	83.14	131.3	-173.5	79.1	67.0	12.03	6.571		
2,200.0	2,182.1	2,201.7	2,165.0	6.3	7.0	73.47	150.3	-203.0	92.7	80.0	12.73	7.281		
2,300.0	2,280.5	2,299.7	2,256.5	6.7	7.7	66.39	169.3	-232.5	108.3	95.0	13.36	8.111		
2,400.0	2,378.9	2,397.7	2,348.0	7.1	8.3	61.13	188.3	-262.1	125.1	111.2	13.95	8.973		
2,500.0	2,477.3	2,495.7	2,439.5	7.5	9.0	57.12	207.3	-291.6	142.8	128.2	14.53	9.823		
2,600.0	2,575.7	2,593.7	2,531.0	7.9	9.7	54.00	226.2	-321.1	160.9	145.8	15.12	10.640		
2,700.0	2,674.0	2,691.7	2,622.5	8.3	10.4	51.52	245.2	-350.7	179.4	163.7	15.72	11.413		
2,800.0	2,772.4	2,789.7	2,714.0	8.7	11.1	49.50	264.2	-380.2	198.2	181.9	16.33	12.140		
2,900.0	2,870.8	2,887.7	2,805.5	9.1	11.9	47.83	283.2	-409.7	217.2	200.2	16.94	12.821		
3,000.0	2,969.2	2,985.7	2,897.0	9.5	12.6	46.43	302.2	-439.2	236.3	218.7	17.56	13.457		
3,100.0	3,067.6	3,083.7	2,988.5	9.9	13.3	45.24	321.1	-468.8	255.5	237.4	18.19	14.052		
3,200.0	3,166.0	3,181.7	3,080.0	10.3	14.0	44.22	340.1	-498.3	274.9	256.1	18.82	14.608		
3,300.0	3,264.3	3,279.7	3,171.5	10.7	14.7	43.33	359.1	-527.8	294.3	274.8	19.45	15.128		
3,400.0	3,362.7	3,377.7	3,263.0	11.1	15.5	42.55	378.1	-557.4	313.8	293.7	20.09	15.614		
3,500.0	3,461.1	3,475.7	3,354.5	11.5	16.2	41.86	397.1	-586.9	333.3	312.5	20.74	16.071		
3,600.0	3,559.5	3,573.7	3,446.0	11.9	16.9	41.25	416.0	-616.4	352.8	331.4	21.38	16.499		
3,700.0	3,657.9	3,671.7	3,537.5	12.3	17.7	40.70	435.0	-646.0	372.4	350.4	22.03	16.902		
3,800.0	3,756.3	3,769.7	3,629.0	12.7	18.4	40.20	454.0	-675.5	392.0	369.4	22.69	17.281		
3,900.0	3,854.6	3,867.7	3,720.5	13.1	19.1	39.76	473.0	-705.0	411.7	388.3	23.34	17.638		
4,000.0	3,953.0	3,965.7	3,811.9	13.5	19.8	39.35	492.0	-734.6	431.4	407.4	24.00	17.976		
4,100.0	4,051.4	4,063.8	3,903.4	13.9	20.6	38.98	511.0	-764.1	451.0	426.4	24.65	18.294		
4,200.0	4,149.8	4,161.8	3,994.9	14.3	21.3	38.64	529.9	-793.6	470.8	445.4	25.31	18.596		
4,300.0	4,248.2	4,259.8	4,086.4	14.7	22.0	38.33	548.9	-823.2	490.5	464.5	25.98	18.882		
4,339.5	4,287.0	4,298.5	4,122.6	14.9	22.3	38.21	556.4	-834.8	498.3	472.0	26.24	18.991		
4,400.0	4,346.7	4,357.6	4,177.8	15.1	22.8	38.15	567.9	-852.7	510.7	484.1	26.61	19.192		
4,500.0	4,445.7	4,454.9	4,268.7	15.4	23.5	37.92	586.7	-882.0	533.4	506.3	27.12	19.671		
4,600.0	4,545.1	4,551.4	4,358.7	15.6	24.2	37.54	605.4	-911.1	558.9	531.3	27.55	20.289		
4,700.0	4,644.8	4,647.0	4,448.0	15.8	24.9	37.04	623.9	-939.9	587.1	559.2	27.90	21.044		

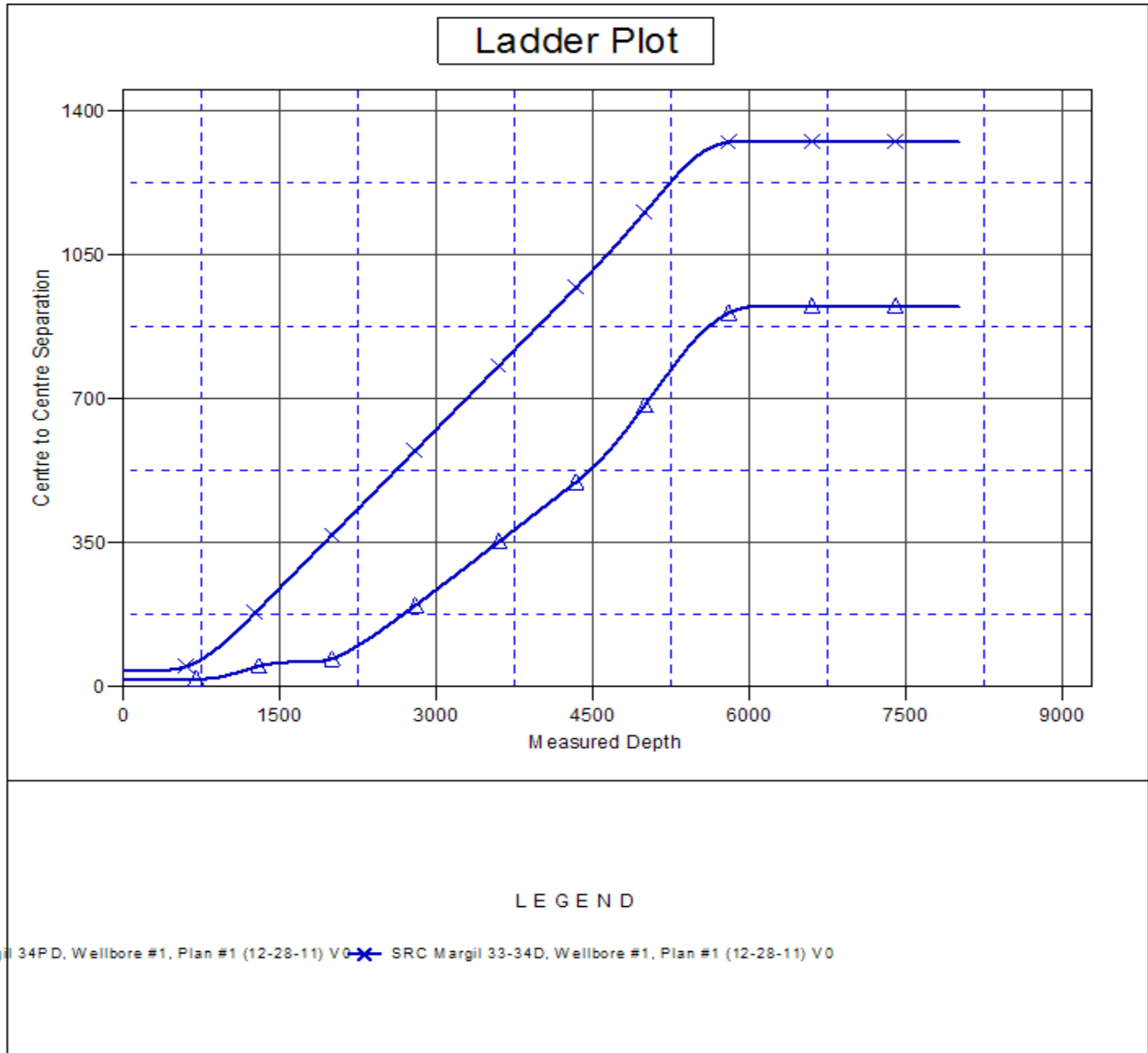
COMPASS 2003.21 Build 46

<b>Company:</b>	Synergy Resources	<b>Local Co-ordinate Reference:</b>	Well SRC Margil 34-34D
<b>Project:</b>	SEC.34-T4N-R68W	<b>TVD Reference:</b>	WELL @ 5103.0ft (Original Well Elev)
<b>Reference Site:</b>	SRC Margil 34-34D Pad Sec.34-T4N-R68W	<b>MD Reference:</b>	WELL @ 5103.0ft (Original Well Elev)
<b>Site Error:</b>	0.0ft	<b>North Reference:</b>	True
<b>Reference Well:</b>	SRC Margil 34-34D	<b>Survey Calculation Method:</b>	Minimum Curvature
<b>Well Error:</b>	0.0ft	<b>Output errors are at</b>	2.00 sigma
<b>Reference Wellbore</b>	Wellbore #1	<b>Database:</b>	Landmark
<b>Reference Design:</b>	Plan #1 (12-28-11)	<b>Offset TVD Reference:</b>	Offset Datum

Offset Design SRC Margil 34-34D Pad Sec.34-T4N-R68W - SRC Margil 34PD - Wellbore #1 - Plan #1 (12-28-11)												Offset Site Error:	0.0 ft
Survey Program: 0-MWD												Offset Well Error:	0.0 ft
Reference		Offset		Semi Major Axis			Distance						
Measured Depth (ft)	Vertical Depth (ft)	Measured Depth (ft)	Vertical Depth (ft)	Reference (ft)	Offset (ft)	Highside Toolface (°)	Offset Wellbore Centre +N/-S (ft)	+E/-W (ft)	Between Centres (ft)	Between Ellipses (ft)	Minimum Separation (ft)	Separation Factor	Warning
4,800.0	4,744.8	4,741.5	4,536.2	15.9	25.7	36.46	642.2	-968.4	618.1	589.9	28.18	21.934	
4,855.2	4,800.0	4,793.3	4,584.6	16.0	26.0	-37.74	652.2	-983.9	636.5	608.2	28.31	22.480	
4,900.0	4,844.8	4,835.1	4,623.6	16.1	26.4	-38.21	660.3	-996.5	651.7	623.3	28.42	22.935	
5,000.0	4,944.8	4,928.4	4,710.8	16.2	27.1	-39.18	678.4	-1,024.7	685.9	657.2	28.68	23.919	
5,100.0	5,044.8	5,021.8	4,797.9	16.4	27.8	-40.06	696.5	-1,052.8	720.2	691.3	28.96	24.871	
5,200.0	5,144.8	5,115.2	4,885.1	16.5	28.5	-40.86	714.6	-1,080.9	754.7	725.4	29.26	25.791	
5,300.0	5,244.8	5,208.5	4,972.3	16.7	29.2	-41.59	732.7	-1,109.1	789.3	759.7	29.58	26.680	
5,400.0	5,344.8	5,337.3	5,093.5	16.8	30.0	-42.45	756.2	-1,145.7	822.0	792.1	29.93	27.461	
5,500.0	5,444.8	5,470.7	5,220.9	17.0	30.6	-43.15	777.4	-1,178.7	850.6	820.3	30.29	28.083	
5,600.0	5,544.8	5,607.7	5,353.6	17.1	31.2	-43.71	795.8	-1,207.4	874.8	844.2	30.67	28.525	
5,700.0	5,644.8	5,747.8	5,490.8	17.3	31.7	-44.14	811.1	-1,231.1	894.5	863.4	31.06	28.801	
5,800.0	5,744.8	5,890.4	5,631.7	17.4	32.1	-44.46	822.9	-1,249.5	909.4	878.0	31.45	28.912	
5,900.0	5,844.8	6,034.9	5,775.4	17.6	32.4	-44.66	831.0	-1,262.1	919.5	887.7	31.85	28.873	
6,000.0	5,944.8	6,180.5	5,920.8	17.7	32.6	-44.77	835.2	-1,268.6	924.7	892.5	32.23	28.687	
6,100.0	6,044.8	6,305.5	6,045.8	17.9	32.7	-44.78	835.8	-1,269.5	925.4	892.8	32.59	28.392	
6,200.0	6,144.8	6,405.5	6,145.8	18.1	32.8	-44.78	835.8	-1,269.5	925.4	892.5	32.94	28.095	
6,300.0	6,244.8	6,505.5	6,245.8	18.2	32.9	-44.78	835.8	-1,269.5	925.4	892.2	33.29	27.802	
6,400.0	6,344.8	6,605.5	6,345.8	18.4	33.0	-44.78	835.8	-1,269.5	925.4	891.8	33.64	27.513	
6,500.0	6,444.8	6,705.5	6,445.8	18.6	33.1	-44.78	835.8	-1,269.5	925.4	891.5	33.99	27.228	
6,600.0	6,544.8	6,805.5	6,545.8	18.7	33.2	-44.78	835.8	-1,269.5	925.4	891.1	34.34	26.948	
6,700.0	6,644.8	6,905.5	6,645.8	18.9	33.3	-44.78	835.8	-1,269.5	925.4	890.7	34.70	26.671	
6,800.0	6,744.8	7,005.5	6,745.8	19.1	33.4	-44.78	835.8	-1,269.5	925.4	890.4	35.06	26.398	
6,900.0	6,844.8	7,105.5	6,845.8	19.2	33.5	-44.78	835.8	-1,269.5	925.4	890.0	35.42	26.130	
7,000.0	6,944.8	7,205.5	6,945.8	19.4	33.6	-44.78	835.8	-1,269.5	925.4	889.7	35.78	25.865	
7,100.0	7,044.8	7,305.5	7,045.8	19.6	33.7	-44.78	835.8	-1,269.5	925.4	889.3	36.14	25.605	
7,200.0	7,144.8	7,405.5	7,145.8	19.8	33.8	-44.78	835.8	-1,269.5	925.4	888.9	36.51	25.348	
7,300.0	7,244.8	7,505.5	7,245.8	19.9	33.9	-44.78	835.8	-1,269.5	925.4	888.6	36.88	25.095	
7,400.0	7,344.8	7,605.5	7,345.8	20.1	34.0	-44.78	835.8	-1,269.5	925.4	888.2	37.25	24.846	
7,500.0	7,444.8	7,705.5	7,445.8	20.3	34.1	-44.78	835.8	-1,269.5	925.4	887.8	37.62	24.601	
7,600.0	7,544.8	7,805.5	7,545.8	20.5	34.2	-44.78	835.8	-1,269.5	925.4	887.4	37.99	24.359	
7,700.0	7,644.8	7,905.5	7,645.8	20.6	34.3	-44.78	835.8	-1,269.5	925.4	887.1	38.37	24.122	
7,800.0	7,744.8	8,005.5	7,745.8	20.8	34.4	-44.78	835.8	-1,269.5	925.4	886.7	38.74	23.888	
7,900.0	7,844.8	8,105.5	7,845.8	21.0	34.5	-44.78	835.8	-1,269.5	925.4	886.3	39.12	23.657	
7,969.8	7,914.6	8,175.3	7,915.6	21.1	34.6	-44.78	835.8	-1,269.5	925.4	886.1	39.38	23.498	
8,005.2	7,950.0	8,209.7	7,950.0	21.2	34.6	-44.78	835.8	-1,269.5	925.4	885.9	39.52	23.419	

<b>Company:</b>	Synergy Resources	<b>Local Co-ordinate Reference:</b>	Well SRC Margil 34-34D
<b>Project:</b>	SEC.34-T4N-R68W	<b>TVD Reference:</b>	WELL @ 5103.0ft (Original Well Elev)
<b>Reference Site:</b>	SRC Margil 34-34D Pad Sec.34-T4N-R68W	<b>MD Reference:</b>	WELL @ 5103.0ft (Original Well Elev)
<b>Site Error:</b>	0.0ft	<b>North Reference:</b>	True
<b>Reference Well:</b>	SRC Margil 34-34D	<b>Survey Calculation Method:</b>	Minimum Curvature
<b>Well Error:</b>	0.0ft	<b>Output errors are at</b>	2.00 sigma
<b>Reference Wellbore</b>	Wellbore #1	<b>Database:</b>	Landmark
<b>Reference Design:</b>	Plan #1 (12-28-11)	<b>Offset TVD Reference:</b>	Offset Datum

Reference Depths are relative to WELL @ 5103.0ft (Original Well Elev) Coordinates are relative to: SRC Margil 34-34D  
Offset Depths are relative to Offset Datum Coordinate System is US State Plane 1983, Colorado Northern Zone  
Central Meridian is -105.500000 ° Grid Convergence at Surface is: 0.33°



**Company:** Synergy Resources  
**Project:** SEC.34-T4N-R68W  
**Reference Site:** SRC Margil 34-34D Pad Sec.34-T4N-R68W  
**Site Error:** 0.0ft  
**Reference Well:** SRC Margil 34-34D  
**Well Error:** 0.0ft  
**Reference Wellbore:** Wellbore #1  
**Reference Design:** Plan #1 (12-28-11)

**Local Co-ordinate Reference:** Well SRC Margil 34-34D  
**TVD Reference:** WELL @ 5103.0ft (Original Well Elev)  
**MD Reference:** WELL @ 5103.0ft (Original Well Elev)  
**North Reference:** True  
**Survey Calculation Method:** Minimum Curvature  
**Output errors are at** 2.00 sigma  
**Database:** Landmark  
**Offset TVD Reference:** Offset Datum

Reference Depths are relative to WELL @ 5103.0ft (Original Well Elev) Coordinates are relative to: SRC Margil 34-34D  
Offset Depths are relative to Offset Datum Coordinate System is US State Plane 1983, Colorado Northern Zone  
Central Meridian is -105.500000 ° Grid Convergence at Surface is: 0.33°

