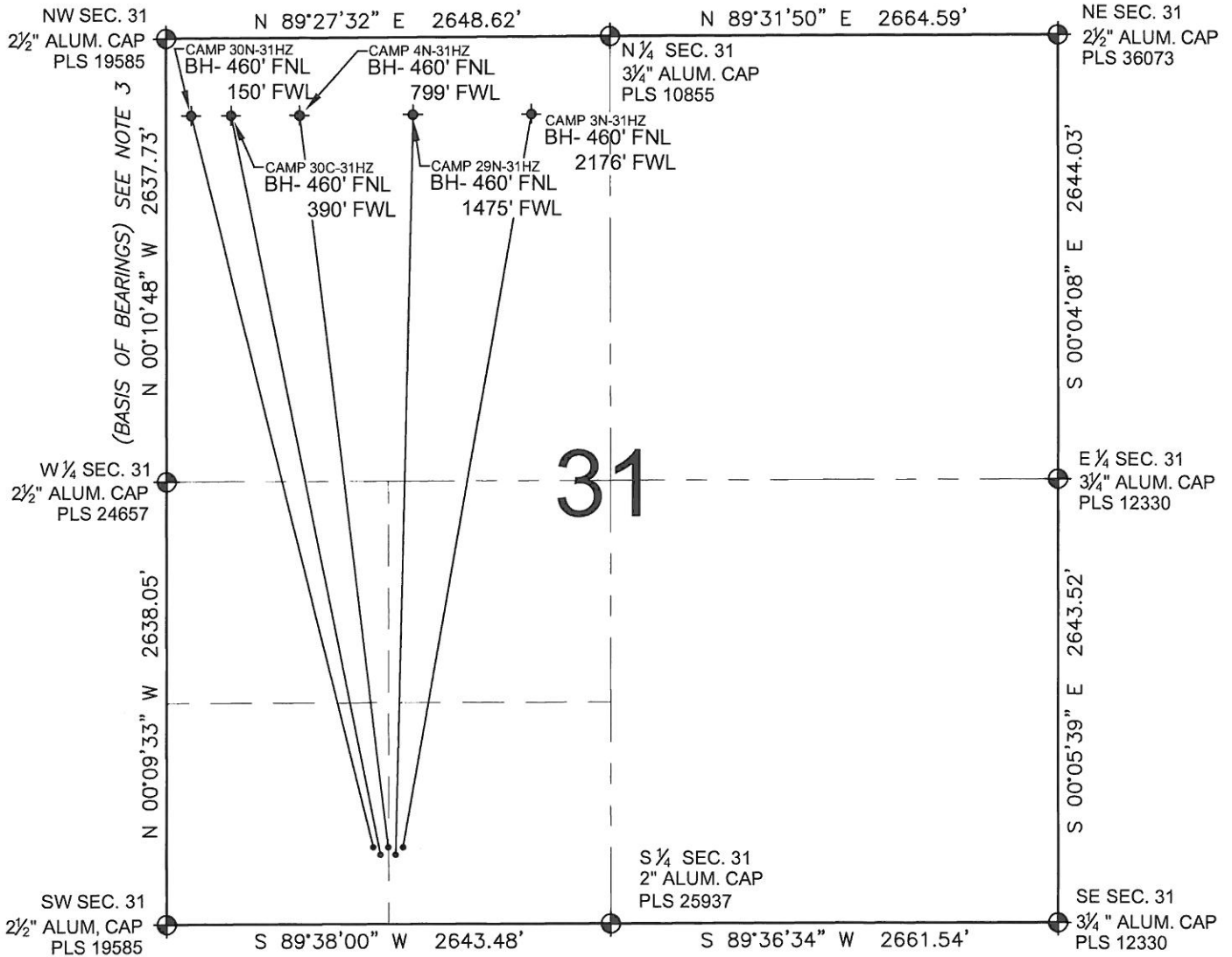


PAD DRAWING: CAMP 5 PAD

SECTION 31, TOWNSHIP 3 NORTH, RANGE 65 WEST, 6TH P.M.



LEGEND

- ⊕ = EXISTING MONUMENT ◆ = BOTTOM HOLE BH= BOTTOM HOLE
- = PROPOSED WELL ◆ = EXISTING WELL

- NOTES:**
1. THIS FIELD SURVEY CONFORMS TO THE MINIMUM STANDARDS SET BY THE C.O.G.C.C., RULE NO. 215
 2. HORIZONTAL POSITIONS AND ORTHOMETRIC ELEVATIONS SHOWN AT THE WELL HEAD, ARE BASED ON GPS-RTK POSITIONS DERIVED FROM MINIMUM 2-HOUR STATIC OBSERVATIONS CORRECTED BY THE NATIONAL GEODETIC SURVEY ONLINE POSITIONING USER SERVICE, O.P.U.S. DATUM: HORIZONTAL = NAD83/2007, VERTICAL = NAVD88
 3. THE BASIS OF BEARINGS ARE STATE PLANE COORDINATE SYSTEM GRID BEARINGS SHOWN HEREON BETWEEN THE DESCRIBED THE MONUMENTS SHOWN HEREON.
 4. GRID DISTANCES ARE SHOWN, AS MEASURED IN THE FIELD, WITH TIES TO WELLS MEASURED PERPENDICULAR TO SECTION LINES.

- NOTES:**
- CAMP 30N-31HZ TO BE AT 460' FSL, 1282' FWL. BOTTOM HOLE AT 460' FNL & 150' FWL.
 - CAMP 30C-31HZ TO BE AT 450' FSL, 1301' FWL. BOTTOM HOLE AT 460' FNL & 390' FWL.
 - CAMP 4N-31HZ TO BE AT 460' FSL, 1320' FWL. BOTTOM HOLE AT 460' FNL & 799' FWL.
 - CAMP 29N-31HZ TO BE AT 450' FSL, 1338' FWL. BOTTOM HOLE AT 460' FNL & 1475' FWL.
 - CAMP 3N-31HZ TO BE AT 460' FSL, 1357' FWL. BOTTOM HOLE AT 460' FNL & 2176' FWL.

PREPARED BY:



PFS llc
 Petroleum Field Services, LLC
 1801 W. 13th Ave.
 Denver, CO 80204

KERR-MCGEE OIL & GAS ONSHORE LP

FIELD DATE: 11-11-11	PAD NAME: CAMP 5 PAD
DRAWING DATE: 11-15-11	SURFACE LOCATION: WELD COUNTY, COLORADO SW 1/4 SW 1/4, SEC. 31, T3N, R65W SE 1/4 SW 1/4, SEC. 31, T3N, R65W
BY: SMF	

