

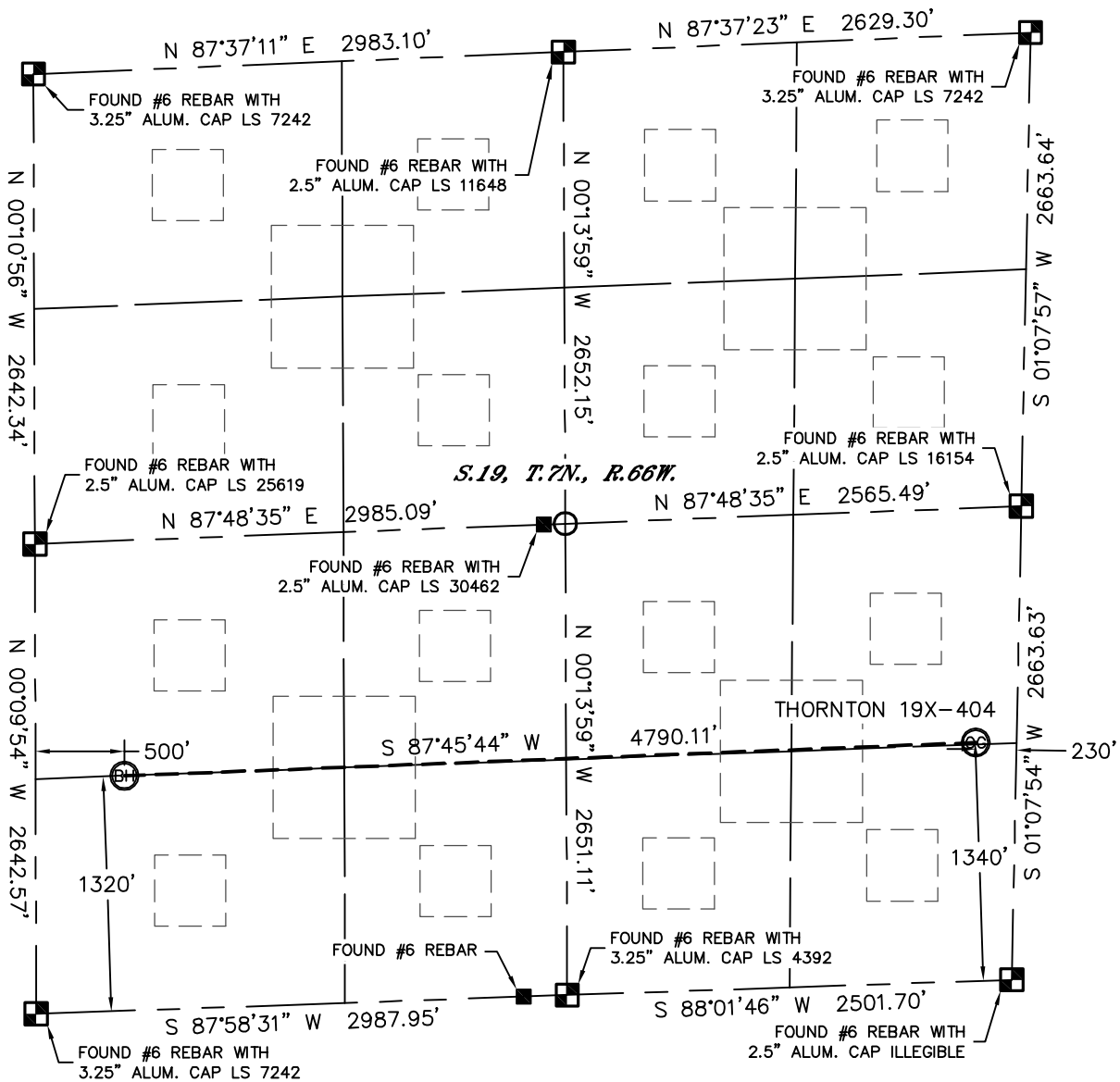


Lat40°, Inc. 1635 Foxtrail Drive, Suite 325 Loveland, CO 970-776-3321

# WELL LOCATION CERTIFICATE

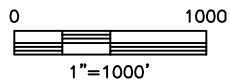
THIS MAP DOES NOT REPRESENT A BOUNDARY SURVEY

SECTION: 19  
TOWNSHIP: 7N  
RANGE: 66W



In accordance with a request from Mac Neumann with PDC ENERGY Lat40°, Inc. has determined the surface location of the THORNTON 19X-404 to be 1340' from the SOUTH line and 230' from the EAST line and the bottom hole to be 1320' from the SOUTH line and 500' from the WEST line as measured at right angles from the section lines of Section 19, Township 7 North, Range 66 West of the Sixth Principal Meridian, County of Weld, State of Colorado.

I hereby state that this Well Location Certificate was prepared by me, or under my direct supervision, that the fieldwork was completed on 12/1/11, for and on behalf of PDC ENERGY That this is not a Land Survey Plat or an Improvement Survey Plat, and that it is not to be relied upon for establishment of fence, building, or other future improvement lines.



## NOTE:

- 1) Bearings shown are Grid Bearings of the Colorado State Plane Coordinate System, North Zone, North American Datum 1983/2007. The lineal dimensions as contained herein are based upon the "U.S. Survey Foot."
- 2) Ground elevations are based on an observed GPS elevation (NAVD 1988 DATUM).
- 3) IMPROVEMENTS: See LOCATION DRAWING for all visible improvements within 400' of disturbed area.
- 4) SURFACE USE: CROP LAND
- 5) INSTRUMENT OPERATOR: ADAM KELLY

SURFACE LOCATION  
LATITUDE: 40.55658°N  
LONGITUDE: 104.81291°W  
PDOP: 2.5  
ELEV: 4961'  
1/4, 1/4: NE1/4SE1/4  
NEAREST PROPERTY LINE: 230' EAST

BOTTOM HOLE  
LATITUDE: 40.55617°N  
LONGITUDE: 104.83014°W

## NOTE

According to Colorado law, you must commence any legal action based upon any defect in this W.L.C. within three years after you discover such defect. In no event, may any action based upon any defect in this survey be commenced more than ten years after the date of the certificate shown hereon. (13-80-105 C.R.S.)

## LEGEND

- = ALIQUOT MONUMENT AS DESCRIBED  
○ = CALCULATED POSITION

Brian T. Brinkman—On behalf of Lat40°, Inc.  
Colorado Licensed Professional  
Land Surveyor No. 38175  
PROJECT#: 2011333

