

CARRIZO OIL & GAS INC - EBUS

Barracuda 20-14-7-60

/Extreme/19

Post Job Summary Cement Surface Casing

Date Prepared: 12/2/11
Version: 1

Service Supervisor: SIPNEFSKI, ROBERT

Submitted by: FRY, DOMINIK

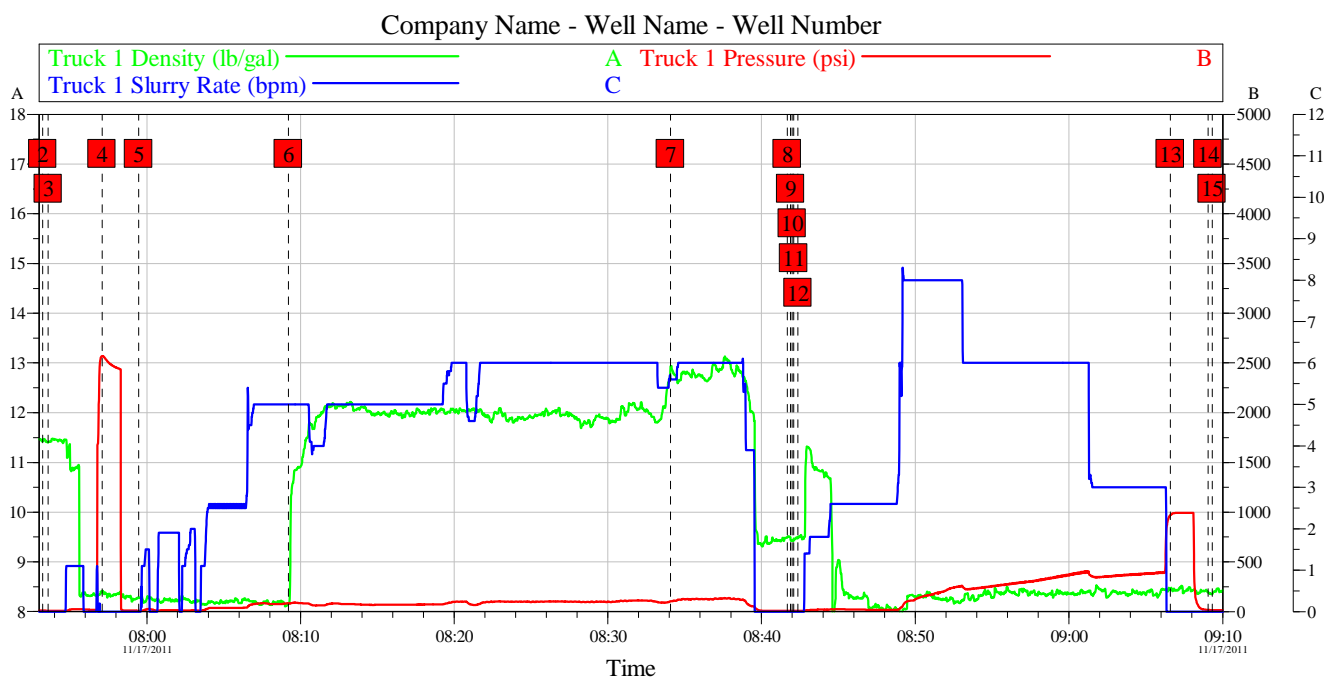
HALLIBURTON

HALLIBURTON

Pumping Schedule

Stage / Plug #	Fluid #	Fluid Type	Fluid Name	Surface Density lbm/gal	Avg Rate bbl/min	Surface Volume	Downhole Volume
1	1	Spacer	Water Spacer	8.33	5.00	20.0 bbl	20.0 bbl
1	2	Cement Slurry	Swiftcem 12#	12.00	6.00	305.0 sacks	305.0 sacks
1	3	Cement Slurry	SWIFTCEM 13#	13.00	6.00	100.0 sacks	100.0 sacks
1	4	Spacer	Water Displacement	8.33	6.00	107.0 bbl	107.0 bbl

Data Acquisition



Global Event Log							
Intersection	T1P	Intersection	T1P	Intersection	T1P	Intersection	T1P
2 Start Job	07:53:14 10.000	3 Test Lines	07:53:35 9.000	4 Test Lines	07:57:05 2570		
5 Pump Spacer 1	07:59:28 9.000	6 Pump Lead Cement	08:09:13 83.00	7 Pump Tail Cement	08:34:05 104.6		
8 Shutdown	08:41:40 8.000	9 Shutdown	08:41:53 8.000	10 Clean Lines	08:41:59 8.000		
11 Drop Top Plug	08:42:06 8.000	12 Pump Displacement	08:42:23 8.000	13 Bump Plug	09:06:36 969.7		
14 Other	09:09:04 17.00	15 End Job	09:09:20 16.00				

Customer:	Job Date: 17-Nov-2011	Sales Order #: 9064354
Well Description:	UWI:	

OptiCem v6.4.10
17-Nov-11 09:13

HALLIBURTON

Service Supervisor Reports

Job Log

Date/Time	Chart #	Activity Code	Pump Rate	Cum Vol	Pump		Pressure (psig)	Comments
11/16/2011 20:00		Arrive at Location from Service Center						
11/16/2011 20:15		Assessment Of Location Safety Meeting						HELD PRE-RIG UP SAFETY MEETING. ASSESS LOCATION FOR HAZARDS.
11/17/2011 07:30		Safety Meeting						HELD SAFETY MEETING WITH ALL 3RD PARTY PERSONNEL.
11/17/2011 07:53		Start Job						
11/17/2011 07:57		Test Lines					2570.0	
11/17/2011 07:59		Pump Spacer 1	4	20			71.0	PUMPED 20BBL OF WATER SUPPLIED BY RIG.
11/17/2011 08:09		Pump Lead Cement	6	134			83.0	PUMPED 305SKS OF SWIFTCEM CMT. @ 12PPG MIXED WITH WATER SUPPLIED BY RIG.
11/17/2011 08:34		Pump Tail Cement	6	35			104.0	PUMPED 100SKS OF SWIFTCEM CMT. @ 13PPG MIXED WITH WATER SUPPLIED BY RIG.
11/17/2011 08:41		Shutdown						
11/17/2011 08:41		Clean Lines						CUSTOMER REQUEST WASH UP ON TOP OF PLUG.
11/17/2011 08:42		Drop Top Plug						
11/17/2011 08:42		Pump Displacement	8	107			109.0	PUMPED 107BBL OF WATER SUPPLIED BY RIG.
11/17/2011 09:06		Bump Plug	3				969.0	
11/17/2011 09:09		Other						CHECK FLOATS, FLOATS HELD.
11/17/2011 09:09		End Job						HELD PRE-RIG DOWN MEETING. PREPARE FOR DEPARTURE.

HALLIBURTON

The Road to Excellence Starts with Safety

Sold To #: 301228	Ship To #: 2891040	Quote #:	Sales Order #: 9064354
Customer: CARRIZO OIL & GAS INC - EBUS	Customer Rep:		
Well Name: Barracuda	Well #: 20-14-7-60	API/UWI #:	
Field:	City (SAP): RAYMER	County/Parish: Weld	State: Colorado
Contractor: ?	Rig/Platform Name/Num: Extreme 19		
Job Purpose: Cement Surface Casing			
Well Type: Development Well	Job Type: Cement Surface Casing		
Sales Person: FLING, MATTHEW	Srvc Supervisor: SIPNEFSKI, ROBERT	MBU ID Emp #: 419391	

Job Personnel

HES Emp Name	Exp Hrs	Emp #	HES Emp Name	Exp Hrs	Emp #	HES Emp Name	Exp Hrs	Emp #
BARNES, BRIAN L		485204	BARRAS, JOSEPH Corey		405168	MARKOVICH, STEVEN Michael		502964
SIPNEFSKI, ROBERT Anthony		419391						

Equipment

HES Unit #	Distance-1 way	HES Unit #	Distance-1 way	HES Unit #	Distance-1 way	HES Unit #	Distance-1 way
10248062C	79 mile	10857012C	79 mile	10951208	79 mile	10972458	79 mile
11341988C	79 mile						

Job Hours

Date	On Location Hours	Operating Hours	Date	On Location Hours	Operating Hours	Date	On Location Hours	Operating Hours
TOTAL								

Total is the sum of each column separately

Job

Formation Name	Formation Depth (MD)	Top	Bottom	Form Type	Job depth MD	Job Depth TVD	Water Depth	Perforation Depth (MD)	From	To
				BHST	1450. ft	1450. ft				
							Wk Ht Above Floor			
							4. ft			

Job Times

Date	Time	Time Zone
16 - Nov - 2011	16:00	MST
16 - Nov - 2011	20:00	MST
17 - Nov - 2011	07:53	MST
17 - Nov - 2011	09:09	MST
17 - Nov - 2011	10:30	MST

Well Data

Description	New / Used	Max pressure psig	Size in	ID in	Weight lbm/ft	Thread	Grade	Top MD ft	Bottom MD ft	Top TVD ft	Bottom TVD ft
Open Hole				12.25				.	1450.		
Surface Casing	Unknown		9.625	8.921	36.		N-80	.	1450.		

Sales/Rental/3rd Party (HES)

Description	Qty	Qty uom	Depth	Supplier
CLR,FLT,TROPHY SEAL, 9-5/8 8RD	1	EA		
SHOE,FLT,TROPHY SEAL,9 5/8 8RD	1	EA		
PLUG,CMTG,TOP,9 5/8,HWE,8.16 MIN/9.06 MA	1	EA		
CNTRLZR, 9 5/8"x13 3/4',#500-0963-1375	14	EA		
COLLAR-STOP-9 5/8"-FRICTION-HINGED	1	EA		
BASKET - CEMENT - 9-5/8 CSG X 12-1/4	1	EA		
KIT,HALL WELD-A	2	EA		

Tools and Accessories

Type	Size	Qty	Make	Depth	Type	Size	Qty	Make	Depth	Type	Size	Qty	Make
Guide Shoe					Packer					Top Plug			

HALLIBURTON

Float Shoe					Bridge Plug					Bottom Plug						
Float Collar					Retainer					SSR plug set						
Insert Float										Plug Container						
Stage Tool										Centralizers						
Miscellaneous Materials																
Gelling Agt			Conc		Surfactant			Conc		Acid Type		Qty	Conc %			
Treatment Fld			Conc		Inhibitor			Conc		Sand Type		Size	Qty			
Fluid Data																
Stage/Plug #: 1																
Fluid #	Stage Type	Fluid Name			Qty	Qty uom	Mixing Density lbm/gal	Yield ft3/sk	Mix Fluid Gal/sk	Rate bbl/min	Total Mix Fluid Gal/sk					
1	Water Spacer				20.00	bbl	8.33	.0	.0	5.0						
2	Swiftcem 12#	SWIFTCEM (TM) SYSTEM (452990)			305.0	sacks	12.	2.43	14.39		14.39					
	14.39 Gal	FRESH WATER														
3	SWIFTCEM 13#	SWIFTCEM (TM) SYSTEM (452990)			100.0	sacks	13.	1.91	10.49		10.49					
	10.49 Gal	FRESH WATER														
4	Water Displacement				107.00	bbl	8.33	.0	.0	5.0						
Calculated Values		Pressures			Volumes											
Displacement		Shut In: Instant			Lost Returns		Cement Slurry			Pad						
Top Of Cement		5 Min			Cement Returns		Actual Displacement			Treatment						
Frac Gradient		15 Min			Spacers		Load and Breakdown			Total Job						
Rates																
Circulating		Mixing			Displacement		Avg. Job									
Cement Left In Pipe		Amount	45 ft	Reason	Shoe Joint											
Frac Ring # 1 @		ID		Frac ring # 2 @		ID		Frac Ring # 3 @		ID		Frac Ring # 4 @				
The Information Stated Herein Is Correct					Customer Representative Signature											