

CARRIZO OIL & GAS INC - EBUS

Barracuda 20-14-7-60

CYCLONE/19

# **Post Job Summary**

## **Cement Intermediate Casing**

Date Prepared: 12/2/11  
Version: 1

Service Supervisor: WHEELER, JUSTIN

Submitted by: FRY, DOMINIK

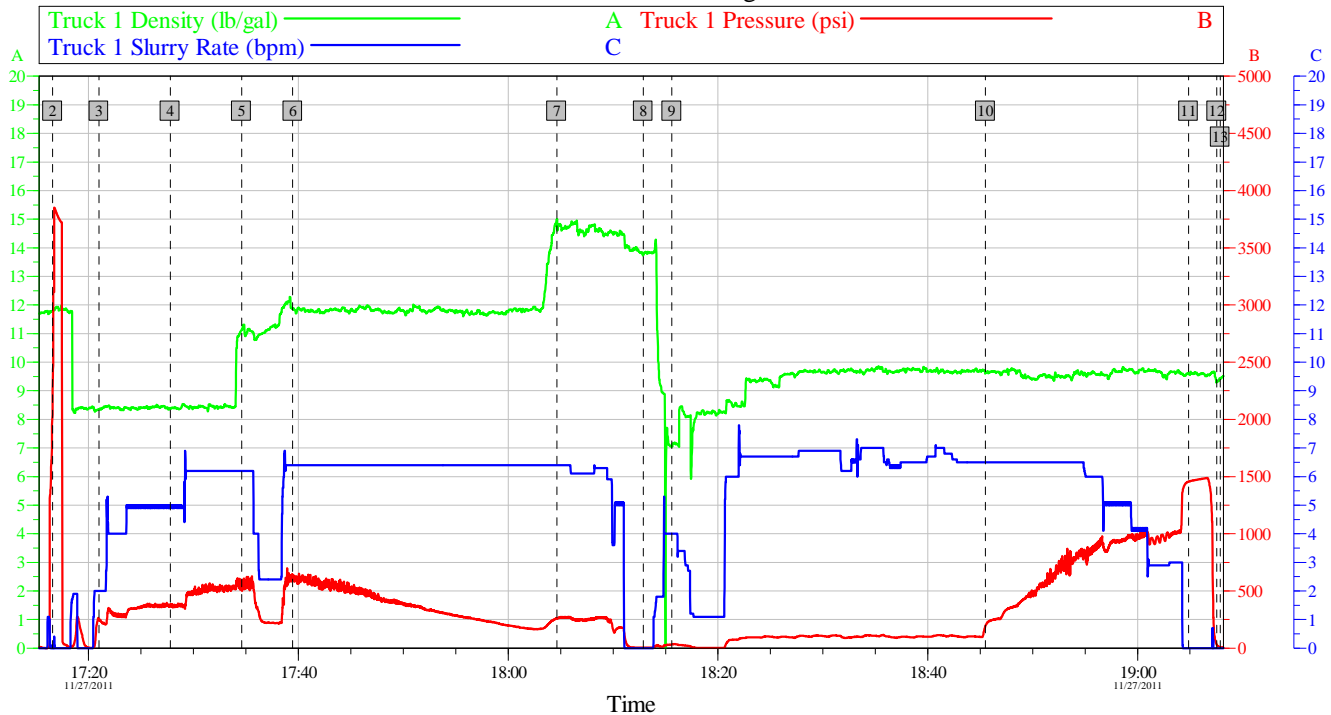
# HALLIBURTON

## Pumping Schedule

Stage /Plug #	Fluid #	Fluid Type	Fluid Name	Surface Density lbm/gal	Avg Rate bbl/min	Surface Volume	Downhole Volume
1	1	Spacer	Biocide Spacer	8.33	5.00	68.0 bbl	68.0 bbl
1	2	Spacer	TUNED SPACER III	11.00	6.00	20.0 bbl	20.0 bbl
1	3	Cement Slurry	FILLCEM B1 11.8#	11.80	6.00	420.0 sacks	420.0 sacks
1	4	Cement Slurry	Expandacem B1 14.6#	14.60	155.0 sacks	155.0 sacks	

## Data Acquisition

Carrizo - Barracuda 20-14-7-60  
7" Intermediate Casing



Global Event Log											
Intersection	TIP	TISR	Intersection	TIP	TISR	Intersection	TIP	TISR			
2 Test Lines	17:16:35	2365	0.000	3 Pump Biocide Water Spacer	17:21:00	248.1	2.000	4 Start Job	17:27:48	384.8	4.907
5 Pump Tuned Spacer	17:34:35	567.5	6.200	6 Pump Lead Cement	17:39:28	619.3	6.400	7 Pump Tail Cement	18:04:38	256.8	6.400
8 Drop Top Plug	18:12:53	5.000	0.000	9 Pump Displacement	18:15:36	33.00	4.000	10 Displ Reached Cmmt	18:45:30	194.7	6.500
11 Bump Plug	19:04:51	1456	0.000	12 Check Floats, Floats Holding	19:07:33	29.42	0.000	13 End Job	19:07:53	7.623	0.000

Customer: Carrizo	Job Date: 27-Nov-2011	Sales Order #: 9091625
Well Description: Barracuda 20-14-7-60	UWI:	

OptiCem v6.4.9  
27-Nov-11 19:56

# HALLIBURTON

## Service Supervisor Reports

### Job Log

Date/Time	Chart #	Activity Code	Pump Rate	Cum Vol	Pump	Pressure (psig)	Comments
11/27/2011 04:30		Depart from Service Center or Other Site					
11/27/2011 06:00		Arrive At Loc					
11/27/2011 15:00		Safety Meeting - Pre Rig-Up					
11/27/2011 17:16		Test Lines					
11/27/2011 17:21		Pump Spacer	2	68		250.0	Pump Biocide Water Spacer
11/27/2011 17:34		Pump Spacer	6	20		565.0	Mix and Pump Tuned Spacer @ 11 lb/gal
11/27/2011 17:39		Pump Lead Cement	6.4	154.1		620.0	Mix and Pump 420 sks FillCem Cement @ 11.8 lb/gal
11/27/2011 18:04		Pump Tail Cement	6.4	40.3		255.0	Mix and Pump 155 sks ExpandaCem Cement @ 14.6 lb/gal
11/27/2011 18:12		Drop Top Plug					Shut-Down, Drop Top Plug
11/27/2011 18:15		Pump Displacement - Start	4	10		30.0	Pump 10 bbls Fresh Water, Wash Pumps and Lines on Top of Plug
11/27/2011 18:18		Pump Displacement - Start	6	0		80.0	Pump Remainder Mud Displacement
11/27/2011 19:04		Pump Displacement - End	3	245.3		1000.0	Good Returns Throughout Job
11/27/2011 19:04		Bump Plug	3	255.3		1460.0	Returned Approx 30 bbls Water Spacer to Surface
11/27/2011 19:07		Check Floats					Floats Holding
11/27/2011 19:07		End Job					
11/27/2011 20:00		Safety Meeting - Pre Rig-Down					
11/27/2011 20:30		Safety Meeting - Departing Location					

# HALLIBURTON

## The Road to Excellence Starts with Safety

<b>Sold To #:</b> 301228	<b>Ship To #:</b> 2891040	<b>Quote #:</b>	<b>Sales Order #:</b> 9091625
<b>Customer:</b> CARRIZO OIL & GAS INC - EBUS		<b>Customer Rep:</b> Wilson, Phil	
<b>Well Name:</b> Barracuda		<b>Well #:</b> 20-14-7-60	<b>API/UWI #:</b>
<b>Field:</b>	<b>City (SAP):</b> RAYMER	<b>County/Parish:</b> Weld	<b>State:</b> Colorado
<b>Contractor:</b> CYCLONE		<b>Rig/Platform Name/Num:</b> 19	
<b>Job Purpose:</b> Cement Intermediate Casing			
<b>Well Type:</b> Development Well		<b>Job Type:</b> Cement Intermediate Casing	
<b>Sales Person:</b> FLING, MATTHEW		<b>Srvc Supervisor:</b> WHEELER, JUSTIN	<b>MBU ID Emp #:</b> 196470

### Job Personnel

HES Emp Name	Exp Hrs	Emp #	HES Emp Name	Exp Hrs	Emp #	HES Emp Name	Exp Hrs	Emp #
HOLLOWAY, DUSTIN Craig		504032	KUNERT, RANDY Joe		477850	MARKOVICH, STEVEN Michael		502964
SANSONI, NICHOLAS Sterling J		502962	WHEELER, JUSTIN W		196470			

### Equipment

HES Unit #	Distance-1 way	HES Unit #	Distance-1 way	HES Unit #	Distance-1 way	HES Unit #	Distance-1 way
10866493C	80 mile	11019275	80 mile	11036298	80 mile	11036301	80 mile
11542778	80 mile	11605599	80 mile				

### Job Hours

Date	On Location Hours	Operating Hours	Date	On Location Hours	Operating Hours	Date	On Location Hours	Operating Hours
<b>TOTAL</b>								

Total is the sum of each column separately

### Job

### Job Times

Formation Name	Formation Depth (MD)	Top	Bottom	Called Out	Date	Time	Time Zone
					26 - Nov - 2011	22:00	MST
<b>Form Type</b>			<b>BHST</b>	<b>On Location</b>	27 - Nov - 2011	06:00	MST
<b>Job depth MD</b>	6756. ft		<b>Job Depth TVD</b>	6756. ft	<b>Job Started</b>	27 - Nov - 2011	17:15
<b>Water Depth</b>			<b>Wk Ht Above Floor</b>		<b>Job Completed</b>	27 - Nov - 2011	19:07
<b>Perforation Depth (MD)</b>	<b>From</b>		<b>To</b>	<b>Departed Loc</b>	27 - Nov - 2011	20:30	MST

### Well Data

Description	New / Used	Max pressure psig	Size in	ID in	Weight lbm/ft	Thread	Grade	Top MD ft	Bottom MD ft	Top TVD ft	Bottom TVD ft
Open Hole Section				8.75				1425.	8861.	.	.
Intermediate Casing	Unknown		7.	6.276	26.			.	5894.	.	.
Intermediate Casing	New		7.	6.366	23.		P-110	5894.	6756.		
Surface Casing	Unknown		9.625	8.921	36.		J-55	.	1425.		

### Tools and Accessories

Type	Size	Qty	Make	Depth	Type	Size	Qty	Make	Depth	Type	Size	Qty	Make
Guide Shoe					Packer					Top Plug			
Float Shoe					Bridge Plug					Bottom Plug			
Float Collar					Retainer					SSR plug set			
Insert Float										Plug Container			
Stage Tool										Centralizers			

### Miscellaneous Materials

Gelling Agt	Conc	Surfactant	Conc	Acid Type	Qty	Conc	%

# HALLIBURTON

Treatment Fld	Conc	Inhibitor	Conc	Sand Type	Size	Qty			
<b>Fluid Data</b>									
<b>Stage/Plug #: 1</b>									
Fluid #	Stage Type	Fluid Name	Qty	Qty uom	Mixing Density lbm/gal	Yield ft <sup>3</sup> /sk	Mix Fluid Gal/sk	Rate bbl/min	Total Mix Fluid Gal/sk
1	Biocide Spacer		68.00	bbl	8.33	.0	.0	.0	
2	TUNED SPACER III	TUNED SPACER III - SBM (483826)	20.00	bbl	11.	6.74	42.28	5.0	
3	FILLCEM B1 11.8#	EXTENDACEM (TM) SYSTEM (452981)	420.0	sacks	11.8	2.06	11.24	5.0	11.24
	11.24 Gal	FRESH WATER							
4	ExpandaCem B1 14.6#	EXPANDACEM (TM) SYSTEM (452979)	155.0	sacks	14.6	1.46	6.1	5.0	6.1
	6.1 Gal	FRESH WATER							
Calculated Values		Pressures		Volumes					
Displacement		Shut In: Instant		Lost Returns		Cement Slurry		Pad	
Top Of Cement		5 Min		Cement Returns		Actual Displacement		Treatment	
Frac Gradient		15 Min		Spacers		Load and Breakdown		Total Job	
<b>Rates</b>									
Circulating		Mixing		Displacement		Avg. Job			
Cement Left In Pipe	Amount	95 ft	Reason	Shoe Joint					
Frac Ring # 1 @	ID	Frac ring # 2 @	ID	Frac Ring # 3 @	ID	Frac Ring # 4 @	ID		
The Information Stated Herein Is Correct				<b>Customer Representative Signature</b>					