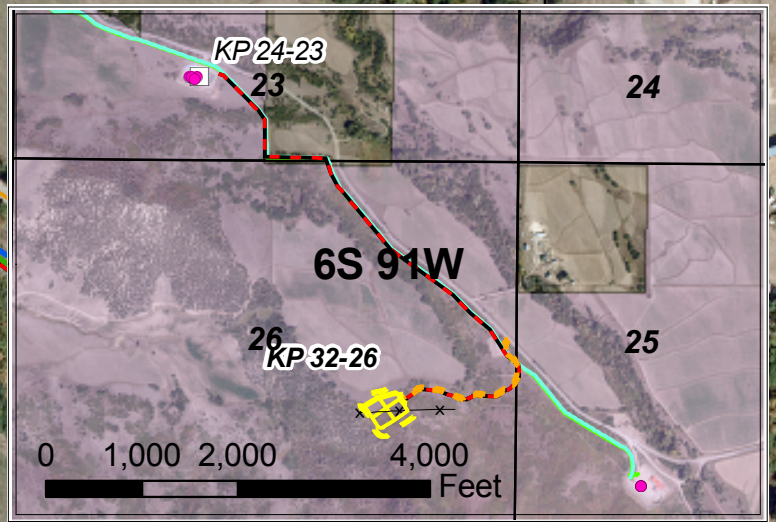


### Geologist Information

General: New location, 24 total wells (drill 10 first)  
 Ownership: CDOW surface/ fee minerals  
 SUA Status: Have SUA  
 Spacing Units: 3 spacing units



0 75 150 300 Feet

### Plan of Development

Access: New access road as shown on map  
 Drilling: Efficiency rig  
 Cuttings: On location in cuttings management area.  
 SIMOPS: Yes  
 Completion: Remote frac from the KP 24-23 pad. 3-4.5" surface lines will run on top of existing (or soon to be existing) pipeline ROWs to KP 32-26 pad – frac water will be supplied to the KP 24-23 by an existing buried water line.  
 Back to KP 24-23 pad.  
 Flowback: Production equipment to be on west corner of pad.  
 Prod Equip: 8" gas/4" water line to be buried along uphill side of access road from production equipment to valve set that is in existing pipeline ROW that follows the county road. A 35' ROW (in addition to access road width) may be needed for pipeline installation. Condensate will be stored in tanks on prod. pad. Water will be piped but enough room will be allotted on prod. pad to set water tanks in case of pipeline maintenance issues arise.

### Legend

- |                       |                           |                           |                                      |
|-----------------------|---------------------------|---------------------------|--------------------------------------|
| ● Production Gas Well | ⊗ Future                  | — Existing Road           | — Proposed Road                      |
| ⊗ Future              | ⊙ Pig L/R                 | — Existing Gas Pipeline   | — Proposed Cuttings Management Area  |
| ⊙ Riser               | ⊙ Blow Down               | — Proposed Gas Pipeline   | — Proposed Production Equipment Area |
| ⊗ Valve or Valve Set  | ⊗ Valve or Valve Set      | — Existing Water Pipeline | — Proposed Daylight Line             |
| ▲ Meter Run           | — Proposed Water Pipeline | — Proposed Frac Line      | — Drainage                           |
|                       | — Existing Fence          |                           |                                      |

Williams Production RMT

KP 32-26 Plan of Development  
 T6S R 91W, Section 26



Date Prepared: December 8, 2011