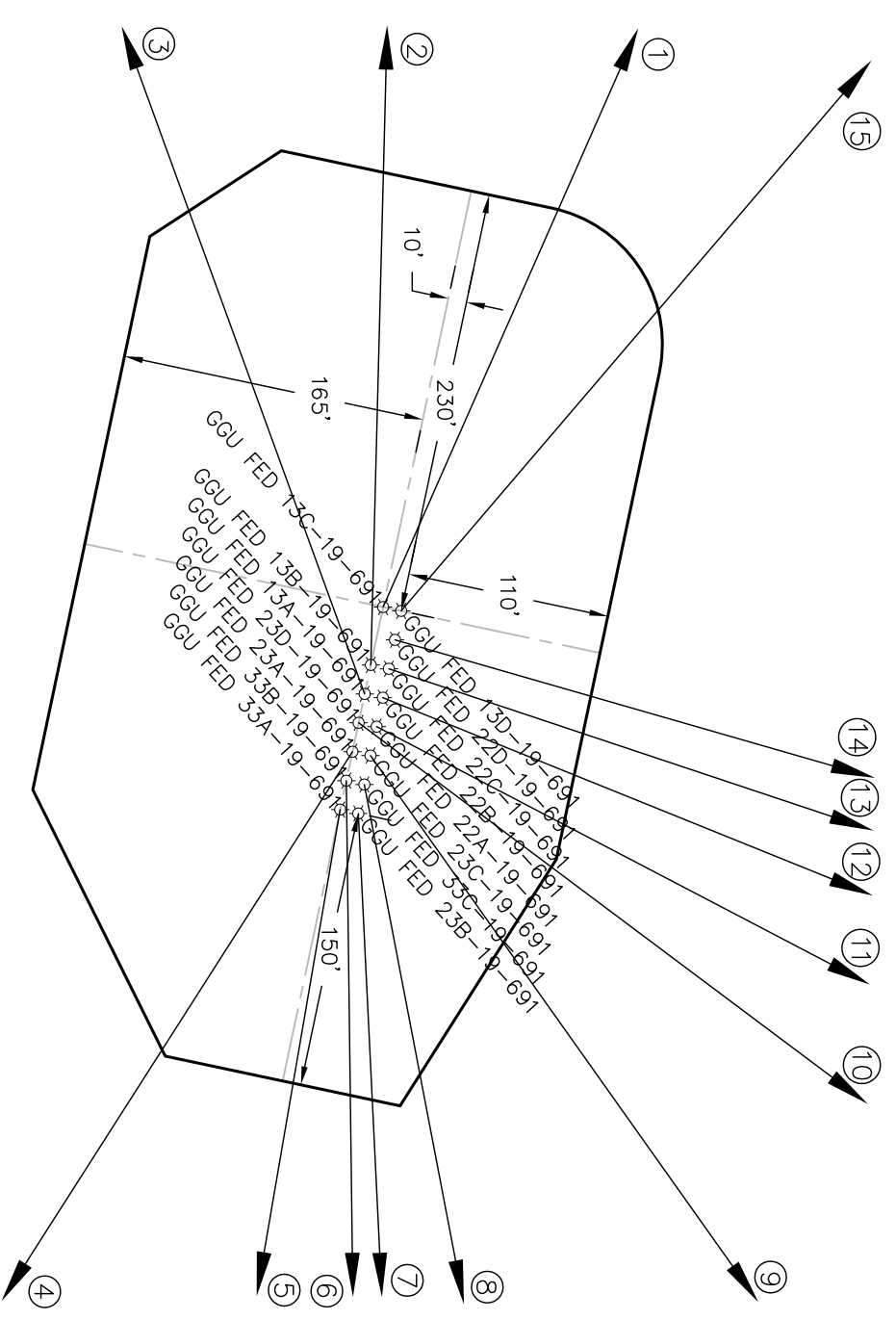
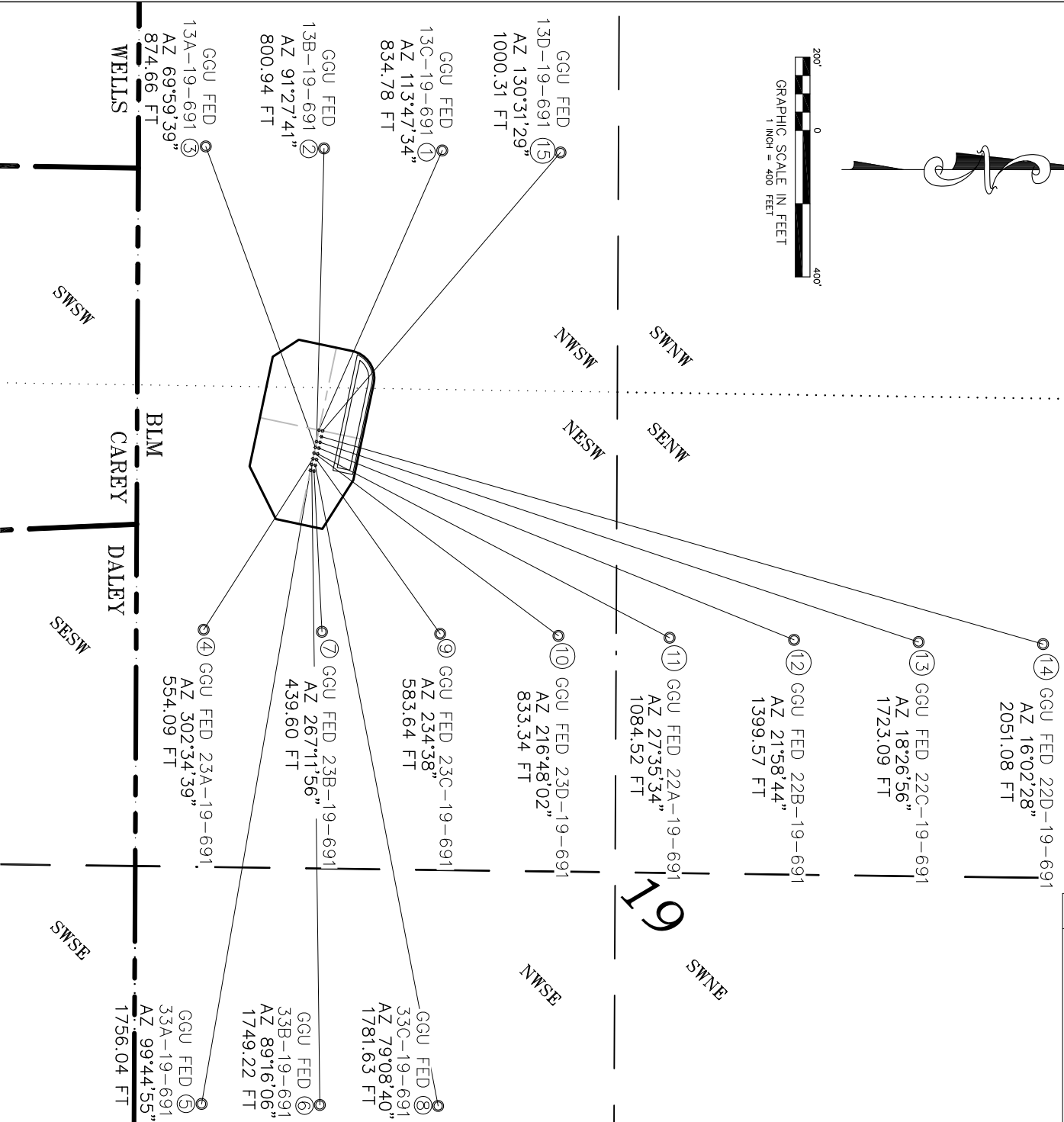


# WELL INTERFERENCE EXHIBIT

## MDP 21

NAD 83 COLORADO CENTRAL ZONE  
SURFACE HOLE LOCATIONS

SURFACE HOLE LOCATIONS						BOTTOM HOLE LOCATIONS						
WELL NAME	FSL	FWL	NORTHING	EASTING	LATITUDE	LONGITUDE	FSL	FWL	NORTHING	EASTING	LATITUDE	LONGITUDE
1 GGU FED 13C-19-691	1808	1430	1617749.8	2407241.9	39.510683	-107.601111	2141	660	161808.6	2406478.0	39.511558	-107.603844
2 GGU FED 13B-19-691	1801	1461	1617743.2	2407273.1	39.510667	-107.601000	1818	660	1617763.6	2406472.5	39.510672	-107.603839
3 GGU FED 13A-19-691	1798	1477	1617739.9	2407288.8	39.510658	-107.600944	1495	660	1617440.6	2406466.9	39.509783	-107.603833
4 GGU FED 23A-19-691	1791	1508	1617733.2	2407320.1	39.510642	-107.600833	1495	1980	1617434.9	2407787.0	39.509853	-107.599153
5 GGU FED 33A-19-691	1785	1539	1617726.6	2407351.4	39.510625	-107.600722	1495	1980 FEL	1617429.3	2409082.1	39.509919	-107.594564
6 GGU FED 33B-19-691	1788	1524	1617729.9	2407335.8	39.510633	-107.600778	1818	1980 FEL	1617752.3	2409084.8	39.510806	-107.594581
7 GGU FED 33C-19-691	1795	1541	1617736.4	2407353.5	39.510653	-107.600714	1818	1980	1617757.9	2407792.6	39.510739	-107.594597
8 GGU FED 22B-19-691	1798	1526	1617739.7	2407337.8	39.510661	-107.600769	2141	1980 FEL	1618075.3	2409087.6	39.511692	-107.594597
9 GGU FED 23C-19-691	1801	1510	1617743.0	2407322.2	39.510669	-107.600828	2141	1980	1618080.9	2407798.1	39.511625	-107.599167
10 GGU FED 23D-19-691	1795	1492	1617736.6	2407304.5	39.510650	-107.600889	2464	1980	1618403.8	2407803.6	39.512514	-107.599175
11 GGU FED 22A-19-691	1804	1494	1617746.3	2407306.5	39.510678	-107.600883	2485 FNL	1980	1618707.5	2407808.9	39.513347	-107.599181
12 GGU FED 22B-19-691	1808	1479	1617749.6	2407290.9	39.510686	-107.600939	2145 FNL	1980	1619047.5	2407814.7	39.514281	-107.599189
13 GGU FED 22C-19-691	1811	1463	1617753.0	2407275.2	39.510694	-107.600994	1805 FNL	1980	1619387.5	2407820.5	39.515214	-107.599194
14 GGU FED 22D-19-691	1814	1447	1617756.3	2407259.6	39.510700	-107.601050	1465 FNL	1980	1619727.5	2407826.3	39.516147	-107.599203
15 GGU FED 13D-19-691	1817	1431	1617759.6	2407243.9	39.510708	-107.601106	2464	660	1618409.6	2406483.6	39.512444	-107.603853



\*NOTE: THE FINISHED PAD ELEVATION IS 5859.8'

**ECLIPSE**  
surveying

111 E. THIRD ST., SUITE 208, RIFLE, CO 81650  
(970) 625-3048

REV. DATE: \_\_\_\_\_  
SCALE: 1" = 400'  
DATE: 11/15/10  
SHEET: 1 OF 1  
PROJECT: MDP-21  
DFT: TAB

**Bill Barrett Corporation**

NT/2SW1/4, SECTION 19  
T. 6 S., R. 91 W. of the 6th. P.M.  
GARFIELD COUNTY, COLORADO