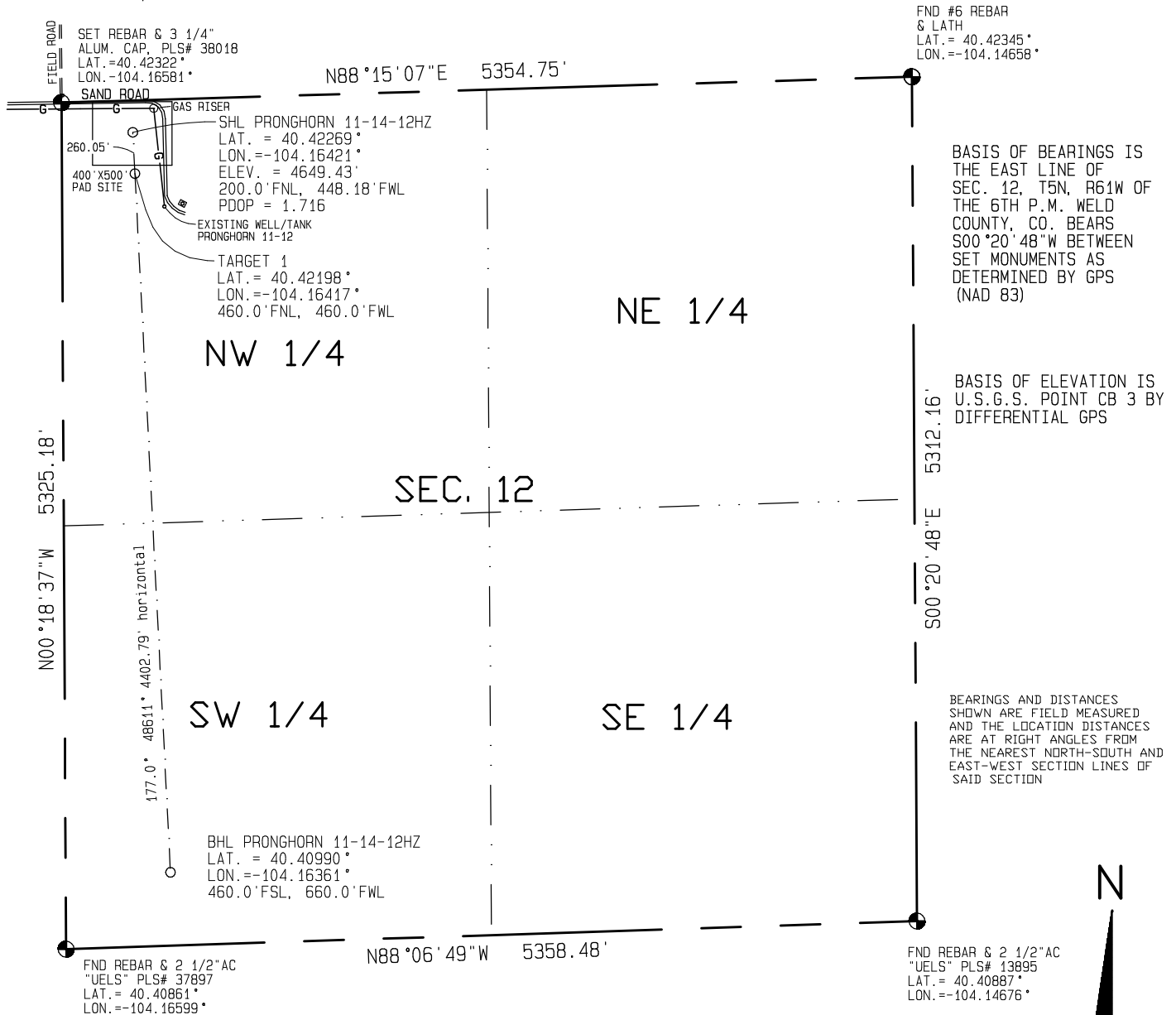
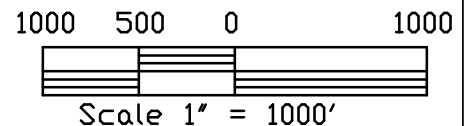


Visible improvements within 400 feet of the location include: A buried gas line is 150' north and 150' east.  
a sand road passes 185' north and 191' east.



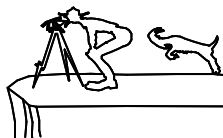
I HEREBY CERTIFY THAT THIS PLAT  
IS AN ACCURATE REPRESENTATION  
OF A CORRECT SURVEY SHOWING  
THE LOCATION OF SAID WELLSITE:



Dan R. Griggs PLS# 38018

**CONTRACT SURVEYORS, LTD.**  
COMPLETE SURVEYING AND GLOBAL POSITIONING

2133 SOUTH BELLAIRE STREET #14  
DENVER COLORADO 80222  
(303) 756-3695



CSL# 12104-01

DATE OF FIELD WORK:

9 JANUARY, 2012

DATE OF DRAWING:

11 JANUARY, 2012

PRONGHORN 11-14-12HZ

NW 1/4, NW 1/4 SEC. 12, T5N, R61W

BONANAZA CREEK OPERATING COMPANY, LLC

WELD COUNTY, COLORADO