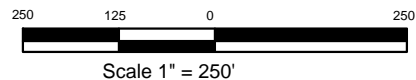


Field Roads pass 185' North and 191' East of Location.
Pronghorn 11-12 well and facilities are 490' SE of Location.



Drawing Title:

Location Drawing

Drawing Date: 01/11/2012

Well/Location Name:

Pronghorn 11-14-12HZ

Drawn By: ksc

Surface Location:

NWNW Sec 12, T5N, R61W, 6th PM, Weld County, CO

Lat. 40.42269 Long. -104.16421

200' FNL 448' FWL