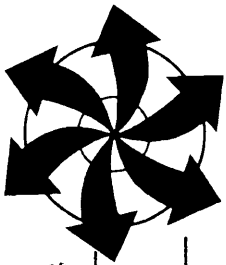


PROJECT: 009-1153  
 DRAWN BY: SDS  
 DATE: 09.21.10

CENTRAL TANK BATTERY AREA  
 LONE PINE GAS, INC.  
 LONE PINE FIELD UNIT  
 JACKSON COUNTY, COLORADO

4690 TABLE MOUNTAIN DRIVE  
 SUITE 200  
 GOLDEN, CO 80403  
 TEL 303.237.2072  
 FAX 303.237.2659

FIGURE  
 3



**PSI**

PIPELINE SOLUTIONS, INC.  
GLENWOOD SPRINGS, CO  
(970) 928-9208

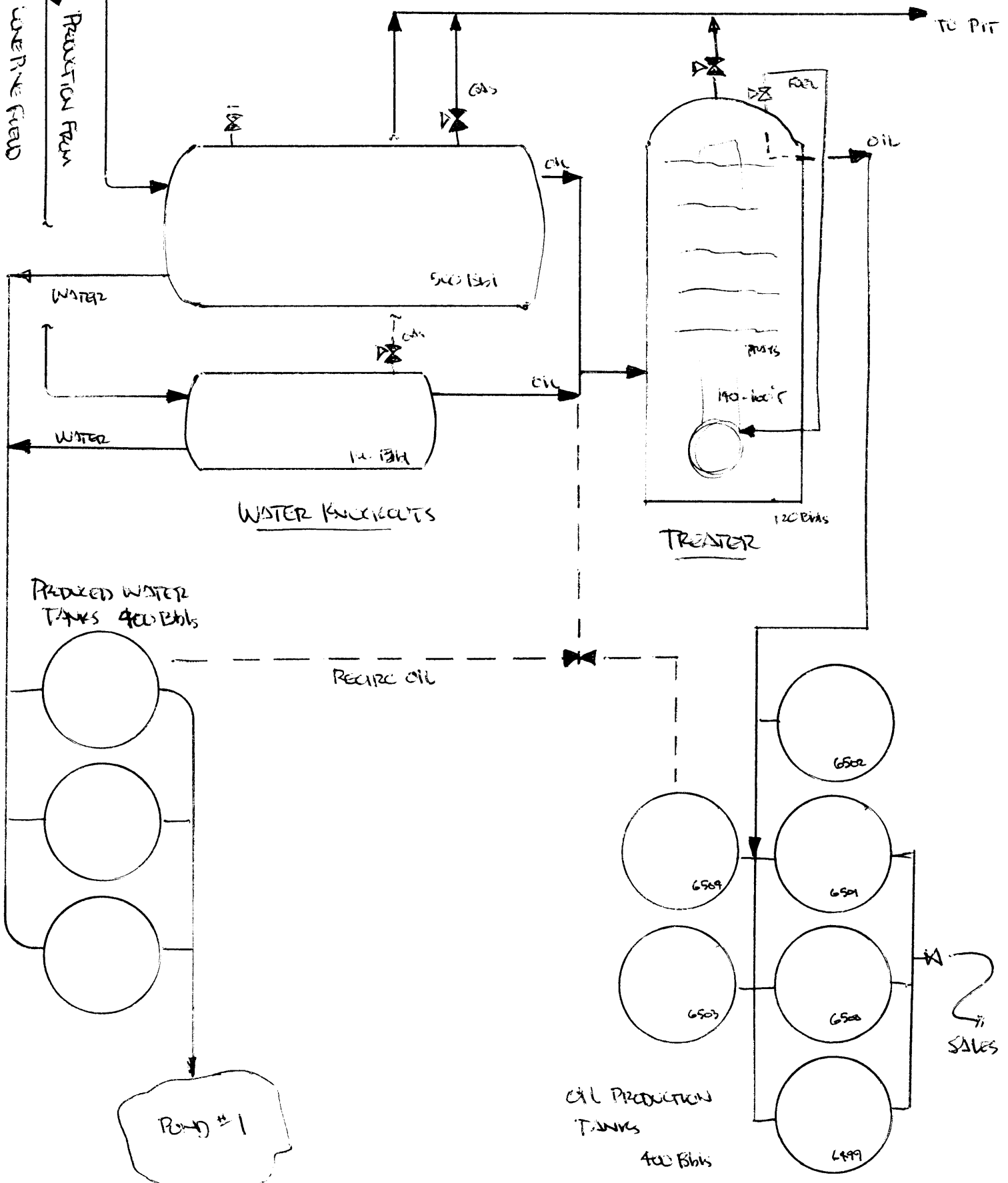
DATE 1/9/12

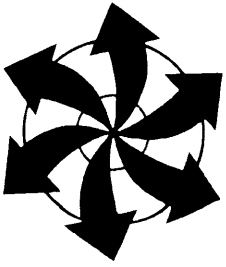
ENGR S

COMPANY LINE PINE OIL FIELD

SHEET        OF       

PROJECT PROCESSING PLANT





PIPELINE SOLUTIONS, INC.  
GLENWOOD SPRINGS, CO  
(970) 928-9208

DATE 1/9/12

ENGR ES

SHEET 2 OF     

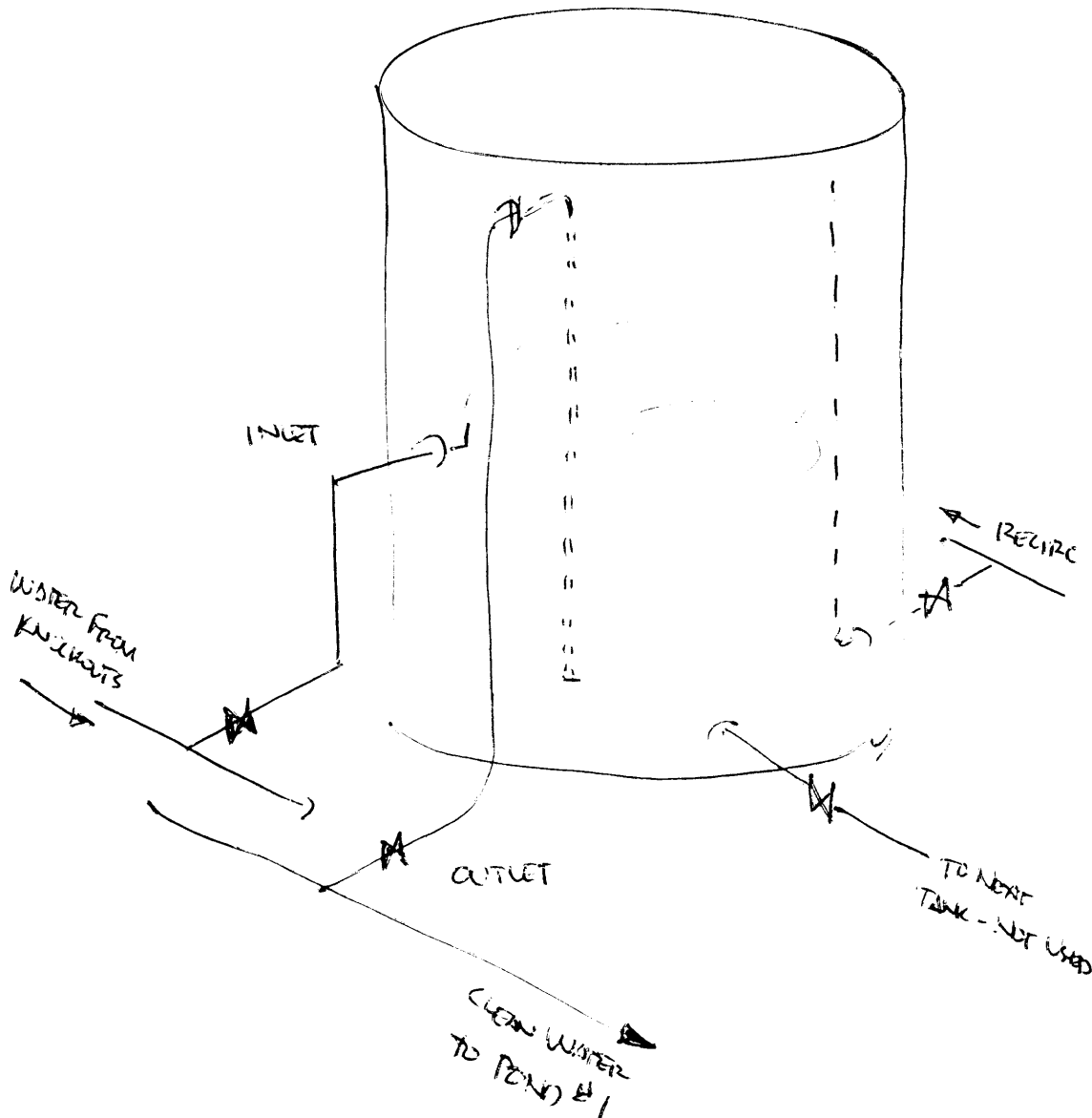
COMPANY LONG PINE

PROJECT     

### PRODUCED WATER TANKS -

FINAL STAGE

3 - PRESSURE 400 PSIG



- ① INLET HAS 45° EL INSIDE TO INDUCE CIRCULATION
- ② OUTLET HAS U-TUBE TO ~12" OFF BOTTOM
- ③ RECIRC LINE HAS INTERNAL RISER TO PULL OIL OFF TOP OF TANK.  
PUMP HAS MANUAL CONTROL, RECIRC - 1/WEEK.