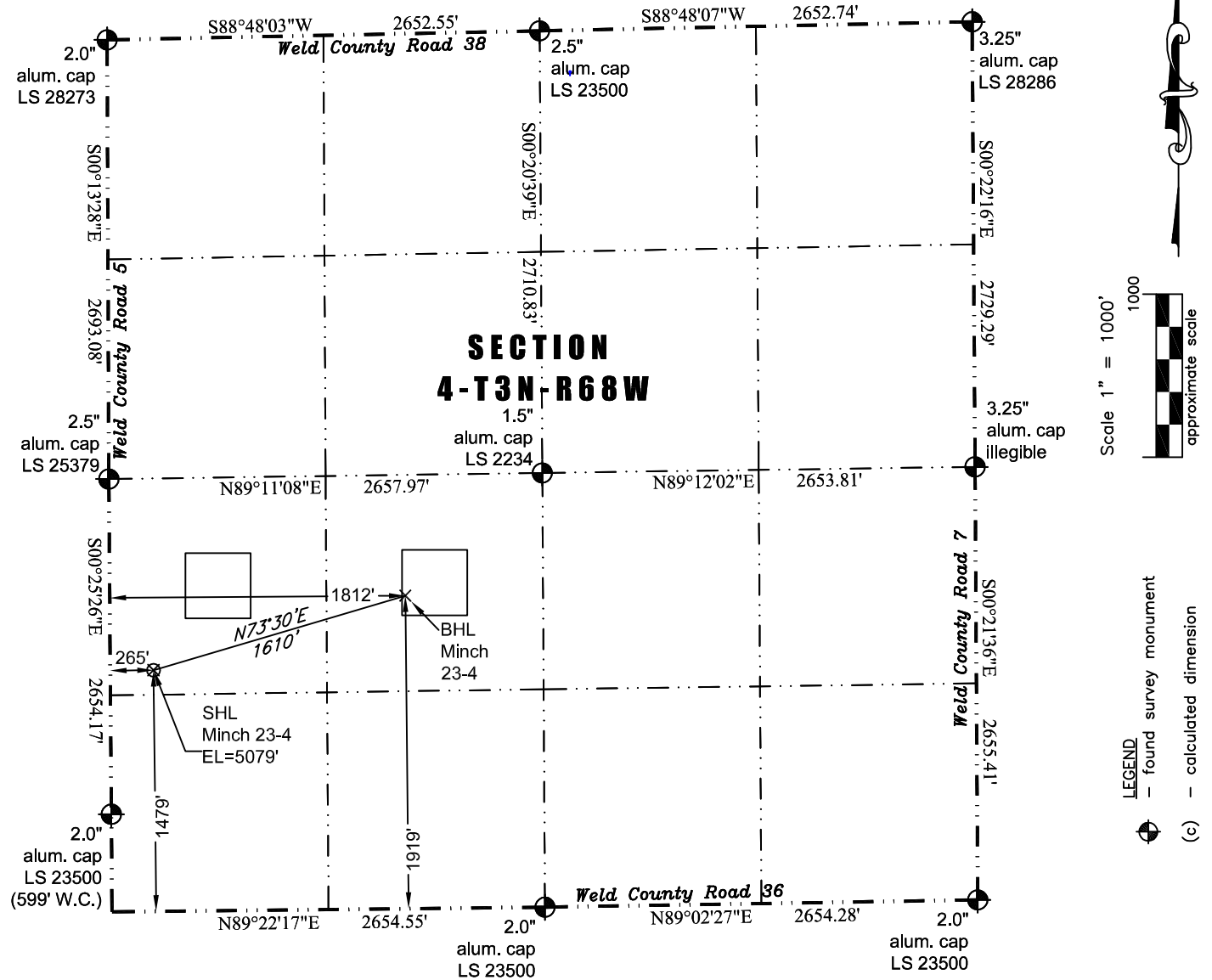


PLS Group, LLC
 109 Coronado Ct. - Bldg. 7
 Fort Collins, Colorado 80525
 P. 970-282-3446 Fx. 970-377-6767

WELL LOCATION CERTIFICATE

THIS MAP DOES NOT REPRESENT A BOUNDARY SURVEY



In accordance with a request from Jay Knutson of EnCana Oil & Gas (USA) Inc., PLS Group, LLC has determined the location of the **Minch 23-4 well** site to be SHL: 1479' FSL and 265' FWL, (BHL 1919' FSL and 1812' FWL), as measured at ninety (90) degrees from the section lines of Section 4, Township 3 North, Range 68 West of the 6th Principal Meridian, Weld County Colorado.

Proposed Surface Hole Data:

Latitude: N 40.25170° (BHL: 40.25293°)
 Longitude: W 105.01675° (BHL: 105.01120°)
 PDOP: 2.0

Nearest:

Building 222' south	Above Ground Utility 235' west
Public Road 249' west	Railroad 7,395' southeast
Property Line 151' south	Well Window: SHL is 373' outside
Existing Well: Kintz #1, 3,679 southwest	

Notes:

- 1) Bearings and distances based on NAD 83 Colorado North State Plane Coordinates using RTK GPS observations taken 12/05/11 by operator Craig Burke.
- 2) Conversion factor to ground (1.000281908).
- 3) Elevations based on NAVD 88 GPS heights and Geoid 2003 corrections.
- 4) See Location Drawing for visible improvements within 400 feet of Pad Site.
- 5) The surface use is a cultivated field.

NOTICE: According to Colorado law you must commence any legal action based upon any defect in this W.L.C. within three years after you first discover such defect. In no event may any action based upon any defect in this W.L.C. be commenced more than ten years from this said date of the certification shown hereon.

I hereby certify that this Well Location Certificate was prepared by me or under my direct supervision on 1/23/2012 for and on behalf of EnCana Oil & Gas (USA) Inc. That it is not a Boundary Survey Plat or an Improved Survey Plat and that it is not to be relied upon for establishment of fences, buildings, or other future improvements.



John Robert McGehee LS#38219
 Well: Minch 23-4 WLC