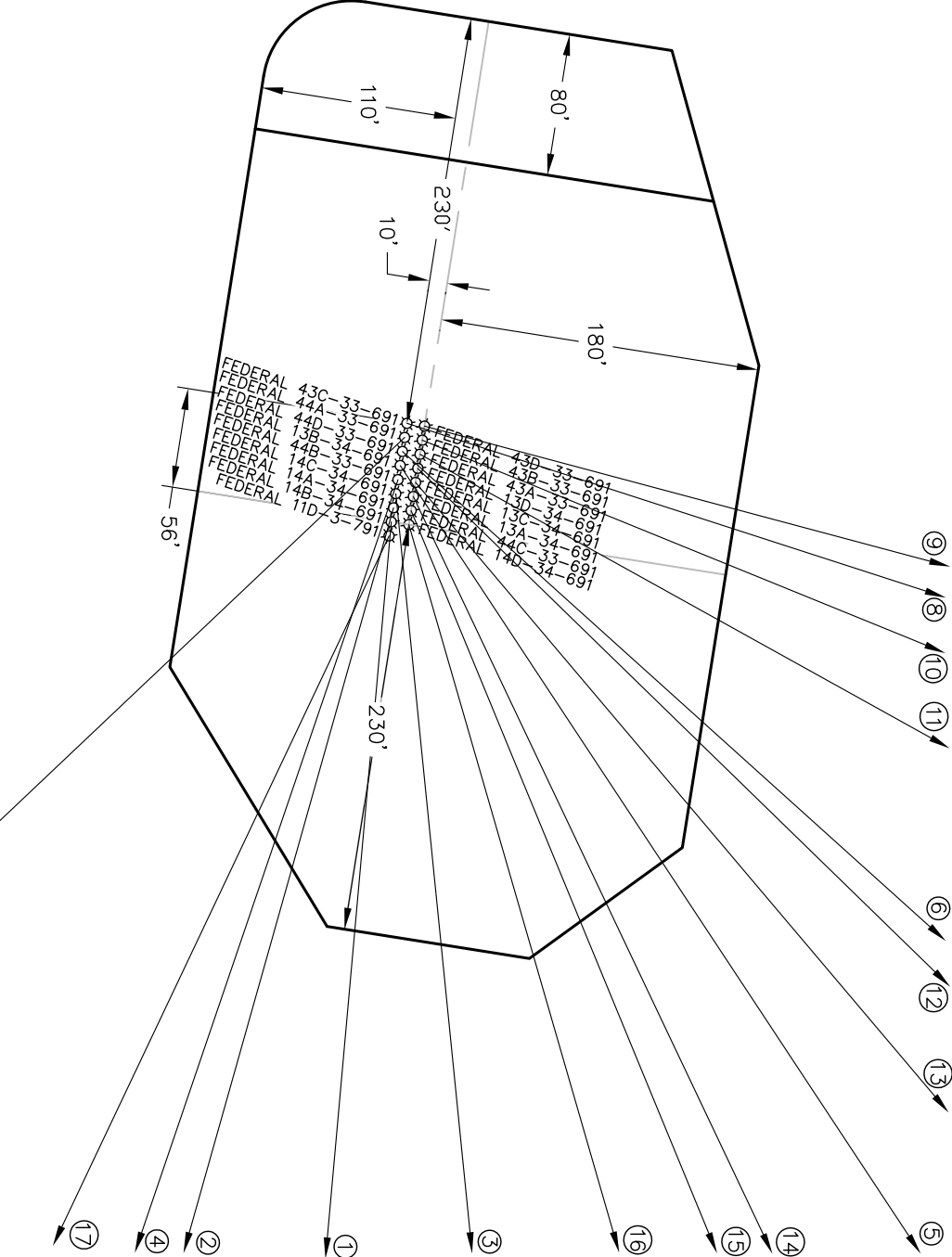
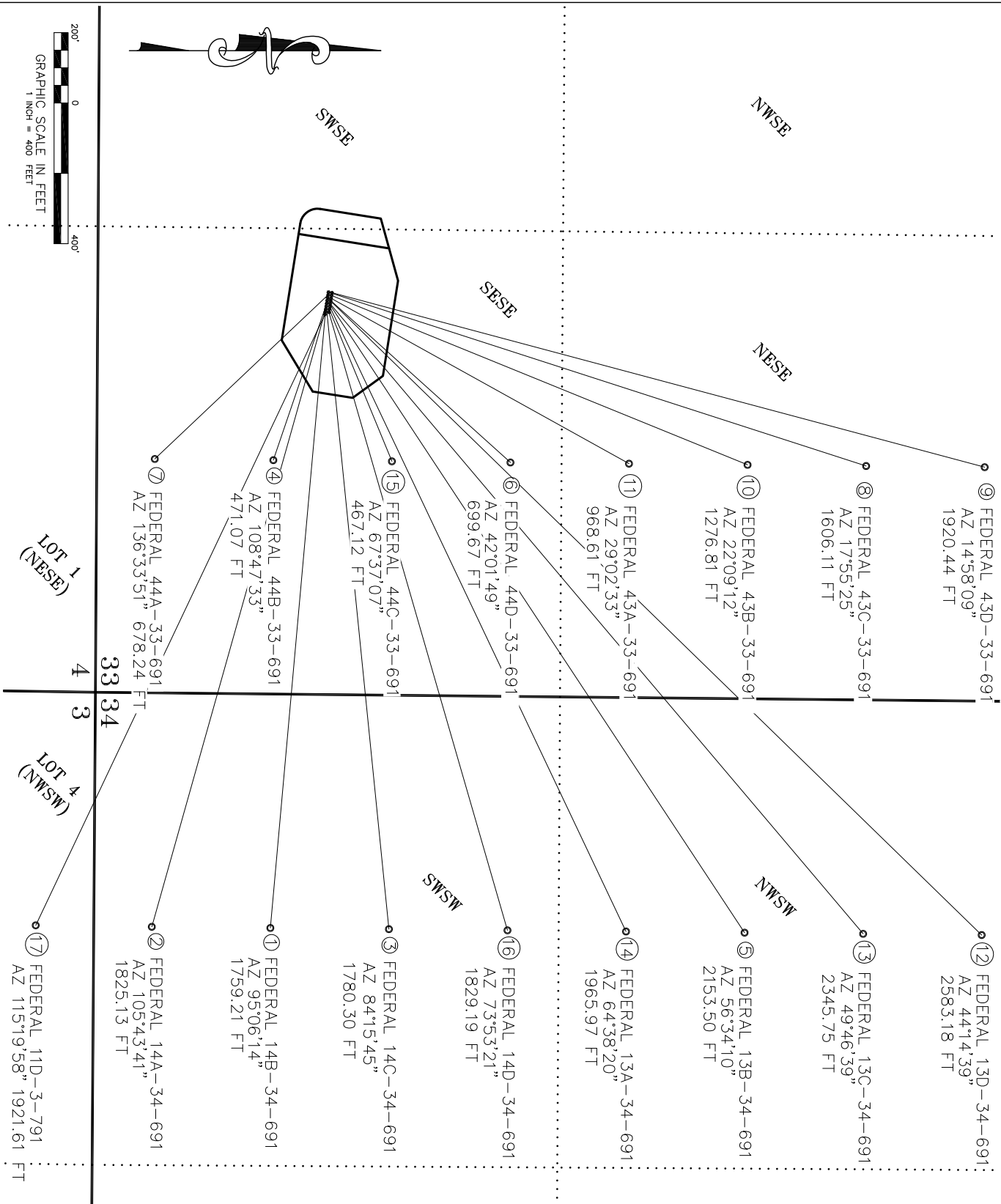


WELL INTERFERENCE EXHIBIT

MDP 26

NAD 83 COLORADO CENTRAL ZONE  
SURFACE HOLE LOCATIONS



\*NOTE: THE FINISHED PAD ELEVATION IS 6746.6'

SURFACE HOLE LOCATIONS						BOTTOM HOLE LOCATIONS						
WELL NAME	FSL	FEL	NORTHING	EASTING	LATITUDE	LONGITUDE	FSNL	FEWL	NORTHING	EASTING	LATITUDE	LONGITUDE
1 FED 14B-34-691	648	1089	1605969.2	2420482.7	39.479179	-107.5533250	502	S 665 W	1605812.7	2422234.9	39.478858	-107.547032
2 FED 14A-34-691	649	1097	1605970.5	2420474.8	39.479182	-107.5533278	165	S 665 W	1605475.7	2422231.6	39.477933	-107.547017
3 FED 14C-34-691	650	1105	1605971.7	2420466.9	39.479185	-107.553306	839	S 665 W	1606149.7	2422238.3	39.479783	-107.547047
4 FED 44B-33-691	651	1112	1605973.0	2420459.0	39.479188	-107.553335	502	S 665 E	1605821.2	2420904.9	39.478799	-107.551743
5 FED 13B-34-691	652	1120	1605974.2	2420451.1	39.479191	-107.553363	1850	S 665 W	1607160.6	2422248.3	39.482559	-107.547092
6 FED 44D-33-691	654	1128	1605975.5	2420443.2	39.479194	-107.553391	1176	S 665 E	1606495.2	2420911.6	39.480649	-107.551773
7 FED 44A-33-691	655	1136	1605976.7	2420435.3	39.479197	-107.553419	165	S 665 E	1605484.2	2420901.6	39.477874	-107.551728
8 FED 43C-33-691	656	1144	1605978.0	2420427.4	39.479200	-107.553447	2187	S 665 E	1607506.1	2420921.6	39.483425	-107.551818
9 FED 43D-33-691	666	1143	1605987.9	2420428.9	39.479227	-107.553442	2524	S 665 E	1607843.1	2420925.0	39.484350	-107.551834
10 FED 43B-33-691	665	1135	1605986.6	2420436.8	39.479224	-107.553414	1850	S 665 E	1607169.2	2420918.3	39.482500	-107.551803
11 FED 43A-33-691	663	1127	1605985.4	2420444.7	39.479221	-107.553386	1513	S 665 E	1606832.2	2420915.0	39.481574	-107.551788
12 FED 13D-34-691	662	1119	1605984.1	2420452.6	39.479218	-107.553358	2524	S 665 W	1607834.6	2422255.0	39.484409	-107.547122
13 FED 13C-34-691	661	1111	1605982.8	2420460.5	39.479215	-107.553330	2187	S 665 W	1607497.6	2422251.6	39.483484	-107.547107
14 FED 13A-34-691	660	1103	1605981.6	2420468.4	39.479212	-107.553302	1513	S 665 W	1606823.7	2422244.9	39.481633	-107.547077
15 FED 44C-33-691	659	1095	1605980.3	2420476.3	39.479209	-107.553274	839	S 665 E	1606158.2	2420908.3	39.479724	-107.551758
16 FED 14D-34-691	657	1087	1605979.1	2420484.3	39.479206	-107.553245	1176	S 665 W	1606486.7	2422241.6	39.480708	-107.547062
17 FED 11D-3-791	646	1081	1605967.9	2420490.6	39.479176	-107.553222	165	N 665 W	1605145.7	2422227.4	39.477027	-107.547005



ECLIPSE  
surveying

111 E. THIRD ST., SUITE 208, RIFLE, CO 81650  
(970) 625-3048



Bill Barrett Corporation

SE<sup>1</sup>/<sub>4</sub>SE<sup>1</sup>/<sub>4</sub>, SECTION 33

T. 6 S., R. 91 W. of the 6th. P.M.

GARFIELD COUNTY, COLORADO