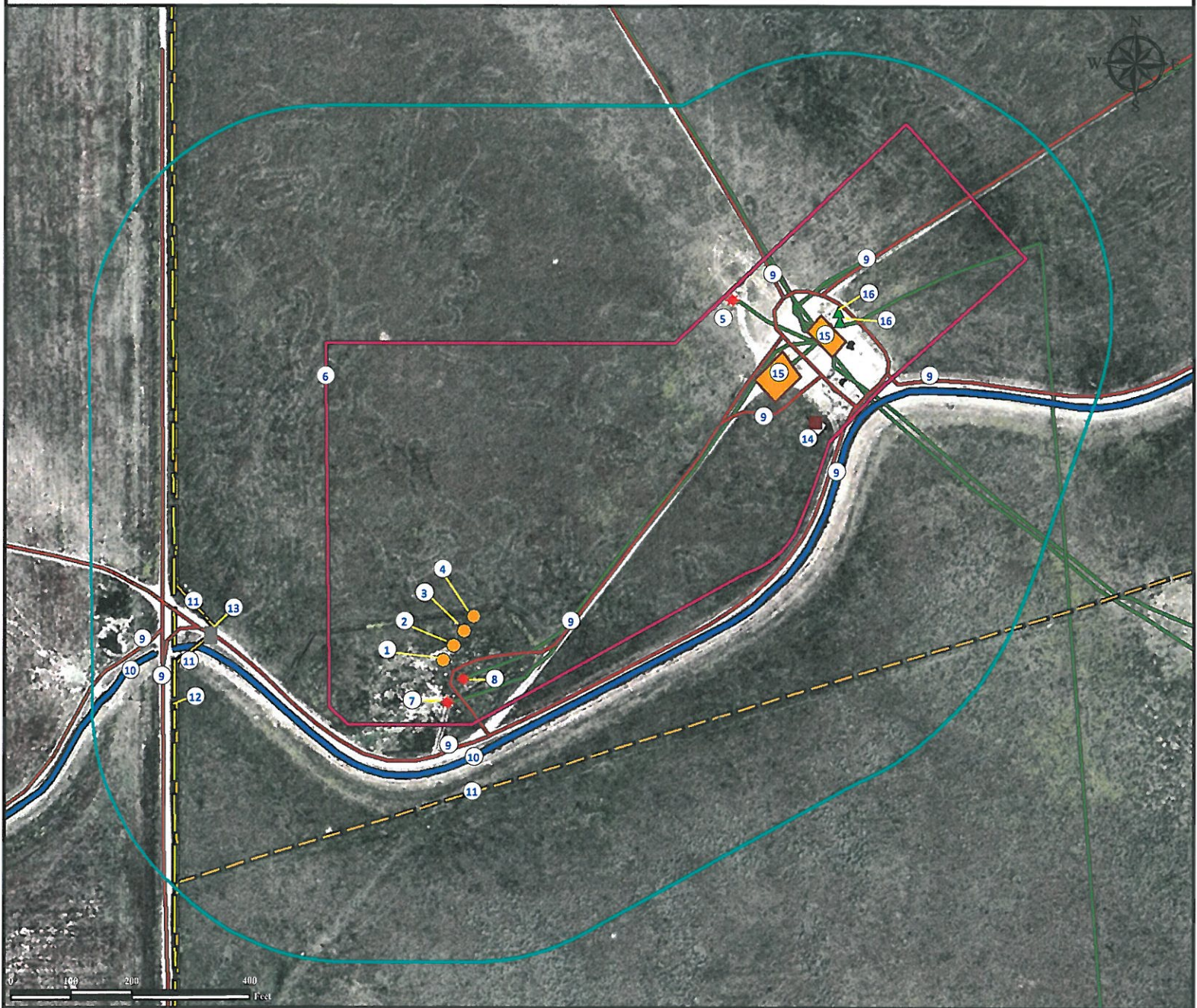


# Location Drawing

## BROWN 13C-26HZ

### Horizontal Multi Well Pad

**SW¼ SW¼ SECTION 35, TOWNSHIP 3 NORTH, RANGE 66 WEST OF THE 6TH PRINCIPAL MERIDIAN**



1. Proposed well BROWN 13C-26HZ.
2. Proposed well BROWN 13N-26HZ.
3. Proposed well BROWN 35N-26HZ.
4. Proposed well BROWN 14N-26HZ.
5. Existing well UPRR 22 PAN AM "P" #1 is ±778' NE.

6. Operational Disturbance Area.
7. Existing well CANNON 13-35 is ±72' SE.
8. Existing well BROWN 33-35 is ±49' SE.
9. Private Roads are ±24' SE, ±145' SE, ±473' W, ±495' W, ±671' NE, ±793' NE, ±855' NE, ±896' NE, and ±920' NE.
10. Irrigation Canals are ±172' SE and ±510' W.

11. Fences are ±227' SE, ±405' SW, and ±416' NW.
12. Power Line is ±455' W.
13. Cattle Guard/Gate is ±394' W.
14. Emission Control Device is ±744' NE.
15. Existing Facilities are ±707' NE and ±826' NE.
16. Meter Houses are ±877' NE and ±886' NE.

#### Legend

	Existing Well		Facilities Enclosure		Fence
	ECD		Disturbance Area		Canal
	Meter House		400' Radius		Private Road
	Proposed Well		Power Line		Underground Pipeline
	Cattle Guard/Gate				

#### Reference Location

\*\* All Measurements are Made from Reference Well BROWN 13C-26HZ \*\*  
 Lat: 40.176226° Long:-104.752098° (NAD83)  
 Elevation: 5020 Feet

Surface Use: Rangeland



Use our resources to find yours!  
[www.petro-fs.com](http://www.petro-fs.com)  
 (303) 928-7128

Field Date: 11/17/2011  
 Drafting Date: 12/16/2011  
 Drafter: DMM  
 Checked By: BHF

Data Sources:  
 - Aerial courtesy of NAIP (2009)

Prepared for:



**KERR-MCGEE OIL & GAS ONSHORE LP**