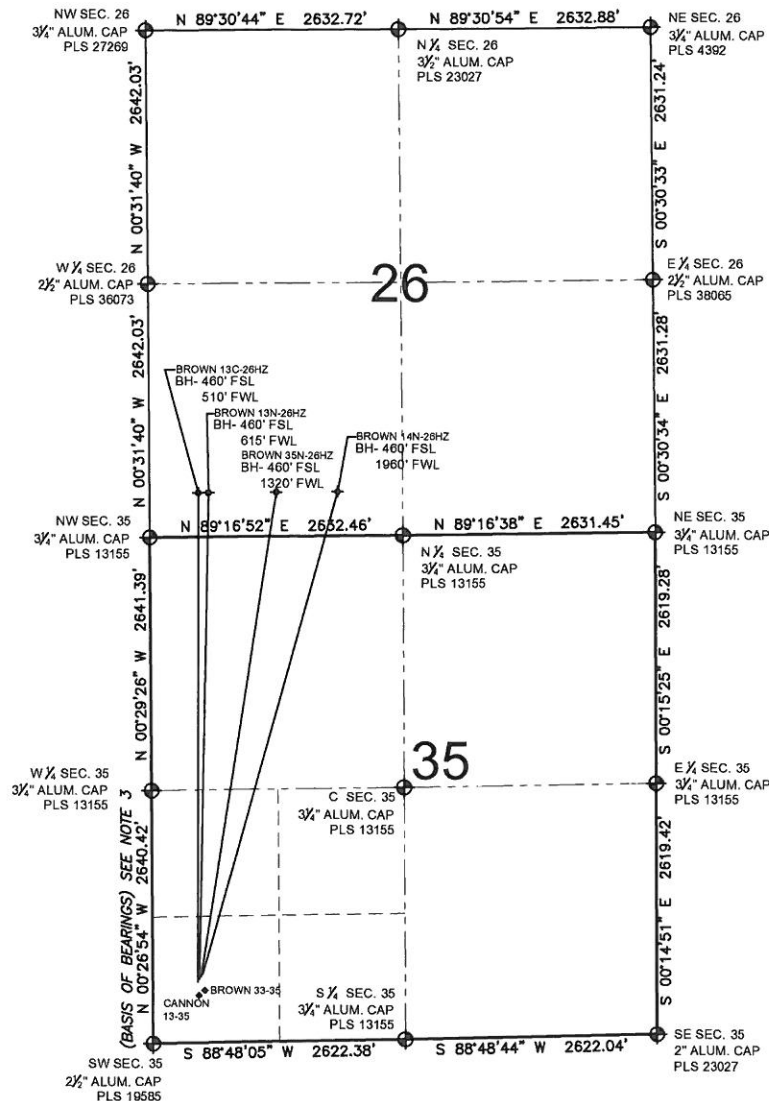


PAD DRAWING: BROWN 4 PAD

SECTION 35, TOWNSHIP 3 NORTH, RANGE 66 WEST, 6TH P.M.



LEGEND

- ⊕ = EXISTING MONUMENT ⊕ = BOTTOM HOLE BH= BOTTOM HOLE
 ● = PROPOSED WELL ◆ = EXISTING WELL

NOTES:

- THIS FIELD SURVEY CONFORMS TO THE MINIMUM STANDARDS SET BY THE C.O.G.C.C., RULE NO. 215
- HORIZONTAL POSITIONS AND ORTHOMETRIC ELEVATIONS SHOWN AT THE WELL HEAD, ARE BASED ON GPS-RTK POSITIONS DERIVED FROM MINIMUM 2-HOUR STATIC OBSERVATIONS CORRECTED BY THE NATIONAL GEODETIC SURVEY ONLINE POSITIONING USER SERVICE, O.P.U.S.
DATUM: HORIZONTAL = NAD83/2007, VERTICAL = NAVD88
- THE BASIS OF BEARINGS ARE STATE PLANE COORDINATE SYSTEM GRID BEARINGS SHOWN HEREON BETWEEN THE DESCRIBED THE MONUMENTS SHOWN HEREON.
- GRID DISTANCES ARE SHOWN, AS MEASURED IN THE FIELD, WITH TIES TO WELLS MEASURED PERPENDICULAR TO SECTION LINES.

NOTES:

BROWN 14N-26HZ TO BE AT 712' FSL, 518' FWL.
 BOTTOM HOLE AT 460' FSL & 1960' FWL.
 BROWN 35N-26HZ TO BE AT 688' FSL, 501' FWL.
 BOTTOM HOLE AT 460' FSL & 1320' FWL.
 BROWN 13N-26HZ TO BE AT 663' FSL, 484' FWL.
 BOTTOM HOLE AT 460' FSL & 615' FWL.
 BROWN 13C-26HZ TO BE AT 639' FSL, 467' FWL.
 BOTTOM HOLE AT 460' FSL & 510' FWL.
 BROWN 33-35 IS 606' FSL, 504' FWL.
 CANNON 13-35 IS 568' FSL, 478' FWL.

PREPARED BY:



KERR-MCGEE OIL & GAS ONSHORE LP

FIELD DATE:
11-17-11

DRAWING DATE:
12-16-11

BY:
SDL & SMF

PAD NAME:
BROWN 4 PAD

SURFACE LOCATION:
 WELD COUNTY, COLORADO
 SW 1/4 SW 1/4, SEC. 35, T3N, R66W, 6TH P.M.

