

HALLIBURTON

QUICKSILVER RESOURCES INC-EBUSINESS

K-Diamond Federal 21-21

Moffat County , Colorado

Cement Intermediate Casing

12-Jul-2011

Job Site Documents

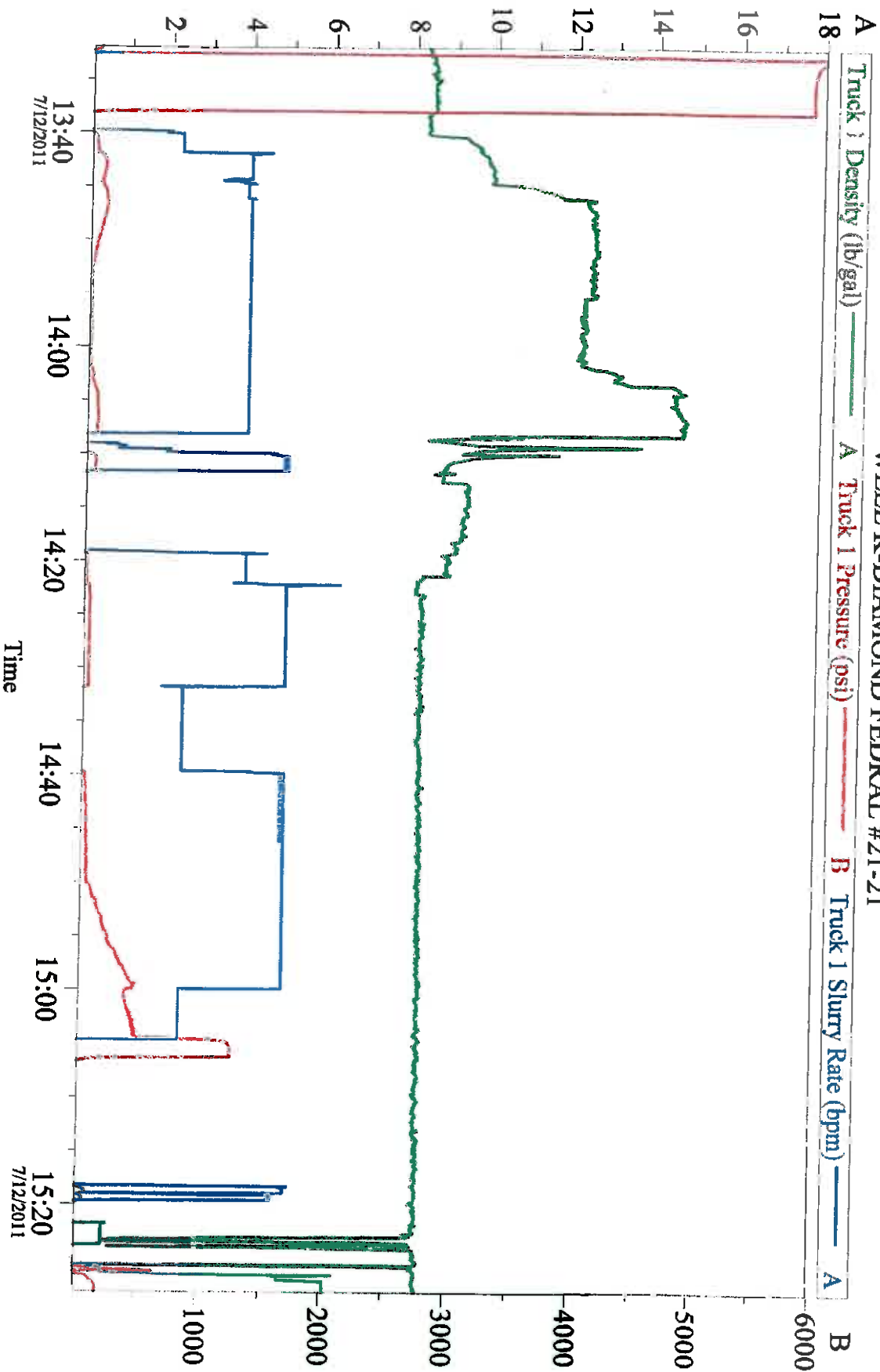
The Road to Excellence Starts with Safety

Sold To #: 346707		Ship To #: 2864112		Quote #:		Sales Order #: 8313880	
Customer: QUICKSILVER RESOURCES INC-EBUSINESS				Customer Rep: Hord, Ryan			
Well Name: K-Diamond Federal		Well #: 21-21		API/UWI #:			
Field:		City (SAP): CRAIG		County/Parish: Moffat		State: Colorado	
Legal Description: Section 21 Township 6N Range 92W							
Contractor: DHS		Rig/Platform Name/Num: DHS6					
Job Purpose: Cement Intermediate Casing							
Well Type: Exploratory / Wildcat				Job Type: Cement Intermediate Casing			
Sales Person: SCOTT, KYLE		Srv Supervisor: DAVIS, CODY		MBU ID Emp #: 446891			
Job Personnel							
HES Emp Name	Exp Hrs	Emp #	HES Emp Name	Exp Hrs	Emp #	HES Emp Name	Exp Hrs
DAVIS, CODY R	13	446891	FUCHS, ALEXANDER Arndt	13	479705	GOODRICH, BENJAMIN Franklin	13
SAGE, JAMES Edwin	13	470468	STILL, MICHEAL Wayne	13	258213	WHITE, KAMEREON V	13
Equipment							
HES Unit #	Distance-1 way	HES Unit #	Distance-1 way	HES Unit #	Distance-1 way	HES Unit #	Distance-1 way
Job Hours							
Date	On Location Hours	Operating Hours	Date	On Location Hours	Operating Hours	Date	On Location Hours
TOTAL		Total is the sum of each column separately					
Job							
Formation Name				Job Times			
Formation Depth (MD) Top Bottom				Date Time Time Zone			
Form Type BHST				Called Out 12 - Jul - 2011 04:30 MST			
Job depth MD 5600. ft Job Depth TVD 5600. ft				On Location 12 - Jul - 2011 09:30 MST			
Water Depth Wk Ht Above Floor 3. ft				Job Started 12 - Jul - 2011 13:00 MST			
Perforation Depth (MD) From To				Job Completed 12 - Jul - 2011 21:50 MST			
				Departed Loc 12 - Jul - 2011 23:00 MST			
Well Data							
Description	New / Used	Max pressure psig	Size in	ID in	Weight lbm/ft	Thread	Grade
Intermediate Open Hole				8.75			
Intermediate Casing	Unknow n		7.	6.276	26.		L-80
Multiple Stage Cement	Unknow n		7.				3600.
Surface Casing	Unknow n		9.625	8.921	36.		J-55
Sales/Rental/3 rd Party (HES)							
Description				Qty	Qty uom	Depth	Supplier
SHOE,FLT,7 8RD,L-80,2-3/4 SSII				1	EA		
CLR,FLT,7 8RD 23-29PPF,L-80,2-3/4				1	EA		
KIT,HALL WELD-A				2	EA		
CMTR,TY P ES-II,7 LG 8RD 26-32PPF,P/Q				1	EA		
PLUG SET-FREE FALL-7"-8RD				1	EA		
SUGAR - GRANULATED				30	LB		
Tools and Accessories							
Type	Size	Qty	Make	Depth	Type	Size	Qty
Guide Shoe					Packer		
Float Shoe					Bridge Plug		
					Top Plug		
					Bottom Plug		

HALLIBURTON**Cementing Job Summary**

Float Collar					Retainer					SSR plug set				
Insert Float										Plug Container				
Stage Tool										Centralizers				
Miscellaneous Materials														
Gelling Agt		Conc		Surfactant		Conc		Acid Type		Qty		Conc	%	
Treatment Fld		Conc		Inhibitor		Conc		Sand Type		Size		Qty		
Fluid Data														
Stage/Plug #: 1														
Fluid #	Stage Type	Fluid Name			Qty	Qty uom	Mixing Density lbm/gal	Yield ft ³ /sk	Mix Fluid Gal/sk	Rate bbl/min	Total Mix Fluid Gal/sk			
1	Tuned Spacer III	TUNED SPACER III - SBM (483826)			20.00	bbl	10.	5.91	40.03	5.0				
2	EconoCem	ECONOCCEM (TM) SYSTEM (452992)			215.0	sacks	12.2	2.22	12.14	5.0	12.14			
		12.14 Gal FRESH WATER												
3	ExtendaCem	EXTENDACCEM (TM) SYSTEM (452981)			70.0	sacks	14.2	1.28	5.6	5.0	5.6			
		5.6 Gal FRESH WATER												
4	Oil Base Mud Displacement				195.00	bbl	8.4			5.0				
Stage/Plug #: 2														
Fluid #	Stage Type	Fluid Name			Qty	Qty uom	Mixing Density uom	Yield uom	Mix Fluid uom	Rate uom	Total Mix Fluid uom			
1	Tuned Spacer III				20.00	bbl	10.	5.91	40.03	5.0				
2	EconoCem	ECONOCCEM (TM) SYSTEM (452992)			120.0	sacks	12.2	2.22	12.23	5.0	12.23			
		12.23 Gal FRESH WATER												
3	ExtendaCem	EXTENDACCEM (TM) SYSTEM (452981)			70.0	sacks	14.2	1.28	5.6	5.0	5.6			
		5.6 Gal FRESH WATER												
4	Oil Base Mud Displacement				75.00	bbl	8.4			5.0				
Calculated Values														
Pressures					Volumes									
Displacement	Shut In: Instant				Lost Returns					Cement Slurry				
Top Of Cement	5 Min				Cement Returns					Actual Displacement				
Frac Gradient	15 Min				Spacers					Load and Breakdown				
Rates														
Circulating	Mixing				Displacement					Avg. Job				
Cement Left In Pipe	Amount	40 ft	Reason	Shoe Joint										
Frac Ring # 1 @	ID	Frac ring # 2 @	ID	Frac Ring # 3 @	ID	Frac Ring # 4 @	ID							
The Information Stated Herein Is Correct					Customer Representative Signature									

QUICKSILVER RIG #6 7" INTERMEDIATE STAGE 1 WELL K-DIAMOND FEDERAL #21-21



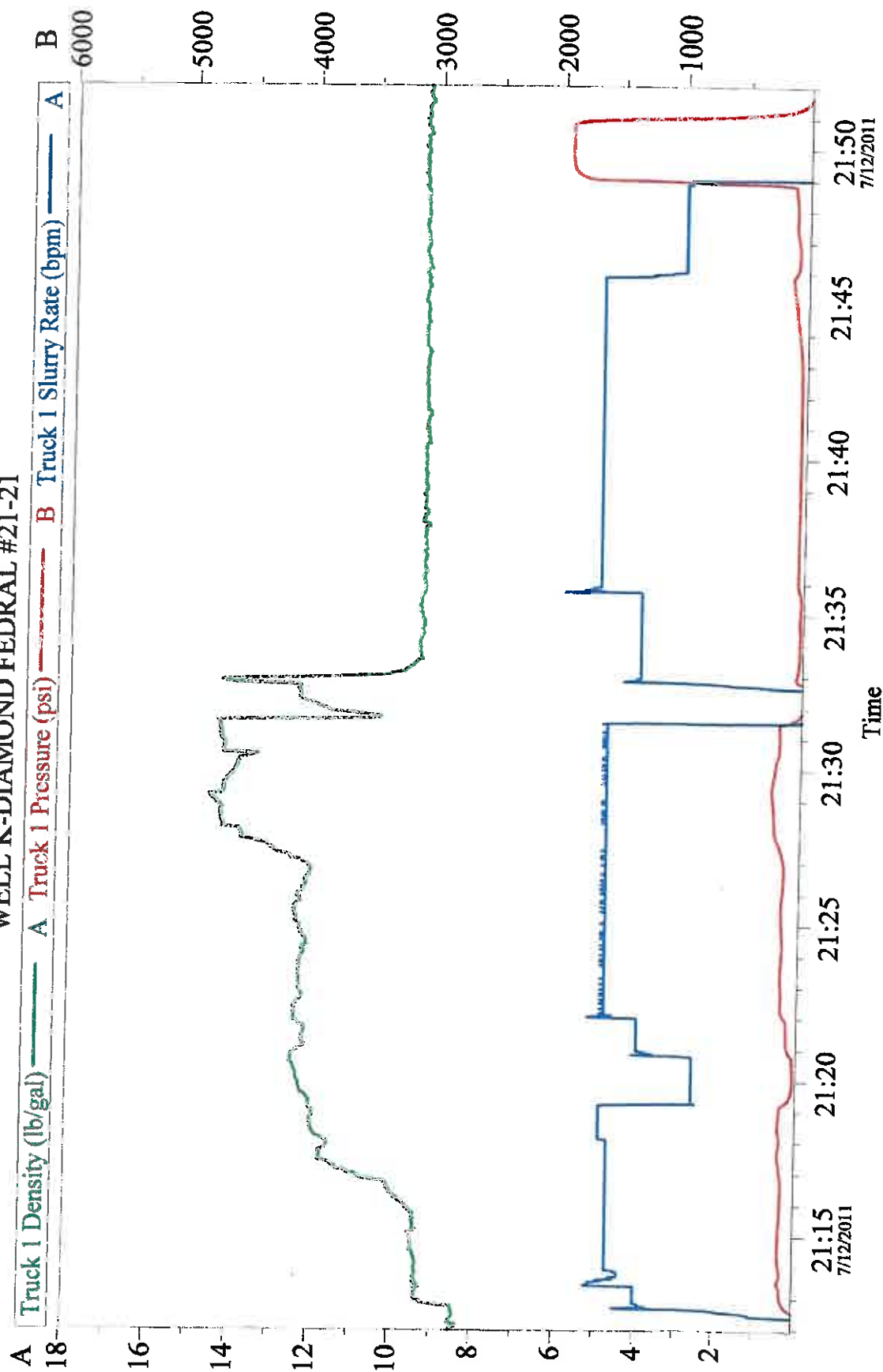
Customer: QUICKSILVER RESOURCES INC-EBUSINESS
Well Description: K-DIAMOND FEDERAL 21-21

Job Date: 12-Jul-2011
UWI:

Sales Order #: 8313880

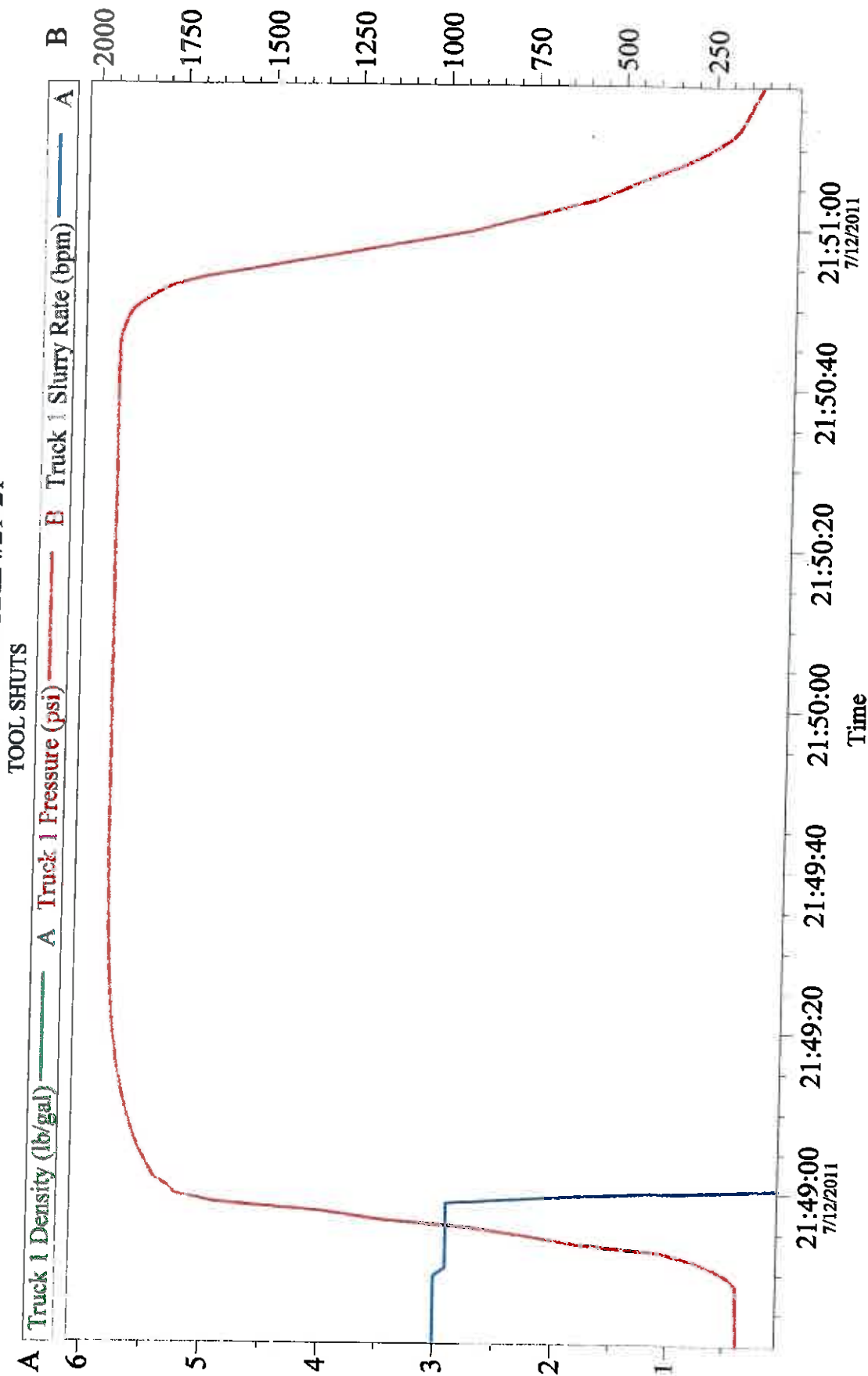
OptiCem v6.4.9
12-Jul-11 15:30

QUICKSILVER #6 7 INTERMEDIATE STAGE 2 WELL K-DIAMOND FEDERAL #21-21



Customer:	QUICKSILVER RESOURCES INC-EBUSINESS	Job Date:	12-Jul-2011	Sales Order #:	8313880
Well Description:	K-DIAMOND FEDERAL 21-21	UWI:			

QUICKSILVER #6 7 INTERMEDIATE STAGE 2 WELL K-DIAMOND FEDERAL #21-21



Customer:	QUICKSILVER RESOURCES INC-EBUSINESS	Job Date: 12-Jul-2011	Sales Order #: 8313880
Well Description:	K-DIAMOND FEDERAL 21-21	UWI:	

OptiCem v6.4.9
12-Jul-11 22:12

The Road to Excellence Starts with Safety

Sold To #: 346707		Ship To #: 2864112		Quote #:		Sales Order #: 8313880	
Customer: QUICKSILVER RESOURCES INC-EBUSINESS				Customer Rep: Hord, Ryan			
Well Name: K-Diamond Federal		Well #: 21-21		API/UWI #:			
Field:		City (SAP): CRAIG		County/Parish: Moffat		State: Colorado	
Legal Description: Section 21 Township 6N Range 92W							
Lat:				Long:			
Contractor: DHS		Rig/Platform Name/Num: DHS6					
Job Purpose: Cement Intermediate Casing				Ticket Amount:			
Well Type: Exploratory / Wildcat		Job Type: Cement Intermediate Casing					
Sales Person: SCOTT, KYLE		Srvc Supervisor: DAVIS, CODY		MBU ID Emp #: 446891			

Activity Description	Date/Time	Cht #	Rate bbl/min	Volume bbl		Pressure psig		Comments
				Stage	Total	Tubing	Casing	
Call Out	07/12/2011 04:30							
Depart Yard Safety Meeting	07/12/2011 06:45							JOURNEY MANAGMENT
Crew Leave Yard	07/12/2011 07:00							
Arrive at Location from Service Center	07/12/2011 09:30							RIG RUNNING CASING
Safety Meeting - Assessment of Location	07/12/2011 09:45							OVER HEAD LINES RED ZONES
Other	07/12/2011 10:00							MEET W/ CO MAN AND GO OVER NUMBERS
Other	07/12/2011 10:05							WAIT ON RIG TO RUN CASING
Other	07/12/2011 11:15							SPOT TRUCKS
Safety Meeting - Pre Rig-Up	07/12/2011 11:30							PINCH POINTS RED ZONES LINE OF FIRE
Rig-Up Equipment	07/12/2011 11:40							
Rig-Up Completed	07/12/2011 12:30							
Safety Meeting - Pre Job	07/12/2011 13:00							GO OVER JOB PROCESS
Pressure Test	07/12/2011 13:31						5000.0	TO 5000PSI
Pump Spacer	07/12/2011 13:35		4				69.0	20 BBLS 10# TUNE SPACER
Pump Lead Cement	07/12/2011 13:40		4				157.0	85BBLS 12.2# 2.22YIELD 12.14GAL/SK 215SKS
Pump Tail Cement	07/12/2011 13:56		4				170.0	15.9BBLS 14.2# 1.28YIELD 5.6GAL/SK 70SKS
Shutdown	07/12/2011 14:01							

Sold To #: 346707

Ship To #: 2864112

Quote #:

Sales Order #:

8313880

SUMMIT Version: 7.2.27

Tuesday, Jul 12, 2011 10:30:00

HALLIBURTON**Cementing Job Log**

Activity Description	Date/Time	Cht #	Rate bbl/ min	Volume bbl		Pressure psig		Comments
				Stage	Total	Tubing	Casing	
Drop Bottom Plug	07/12/2011 14:05							
Pump Displacement - Start	07/12/2011 14:14		5				70.0	PUMP H2O DISPLACEMENT
Slow Rate	07/12/2011 14:27		2.5				18.0	SLOW TO GO THROUGH TOOL 60- 80BBLs GONE
Other	07/12/2011 14:35		5				56.0	UP RATE 80BBLs GONE
Displ Reached Cmmt	07/12/2011 14:47		5				164.0	140BBLs GONE
Slow Rate	07/12/2011 14:55		2.5				400.0	180BBLs GONE
Bump Plug	07/12/2011 15:00		2.5				500.0	TOTAL DISPLACEMENT WAS 195BBLs PRESSURE OVER 500PSI TO 1000PSI
Check Floats	07/12/2011 15:02							.75BBLs BACK
Other	07/12/2011 15:10							DROP OPENING TOOL AND WAIT 15MINS
Other	07/12/2011 15:13							OPEN TOOL
Pump Spacer	07/12/2011 21:12		5				45.0	20BBLs 10# TUNE SPACER
Pump Lead Cement	07/12/2011 21:17		5				137.0	47.5BBLs 12.2# 2.22YIELD 12.14GAL/SK 120SKS
Pump Tail Cement	07/12/2011 21:27		5				221.0	15.9BBLs 14.2# 1.28YIELD 5.6GAL/SK 70SKS
Shutdown	07/12/2011 21:31							
Drop Top Plug	07/12/2011 21:32							
Pump Displacement - Start	07/12/2011 21:33		5				73.0	PUMP H2O DISPLACEMENT
Slow Rate	07/12/2011 21:46		3				110.0	65BBLs GONE
Bump Plug	07/12/2011 21:48		3				150.0	TOTAL DISPLACEMENT 73BBLs
Other	07/12/2011 21:48						1600. 0	TOOL CLOSING
Check Floats	07/12/2011 21:51							.75BBLs BACK

Sold To #: 346707

Ship To #: 2864112

Quote #:

Sales Order #:

8313880

SUMMIT Version: 7.2.27

Tuesday, July 12, 2011 10:30:00

Cementing Job Log

Activity Description	Date/Time	Cht #	Rate bbl/ min	Volume bbl		Pressure psig		Comments
				Stage	Total	Tubing	Casing	
Safety Meeting - Pre Rig- Down	07/12/2011 21:56							PINCH POINTS RED ZONES LINE OF FIRE
Rig-Down Equipment	07/12/2011 22:00							
Rig-Down Completed	07/12/2011 22:45							
Crew Leave Location	07/12/2011 23:00							

Sold To #: 346707

Ship To #: 2864112

Quote #:

Sales Order #:

8313880

SUMMIT Version: 7.2.27

Tuesdav. Julv 12. 2011 10:30:00