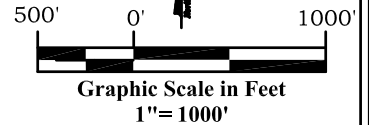
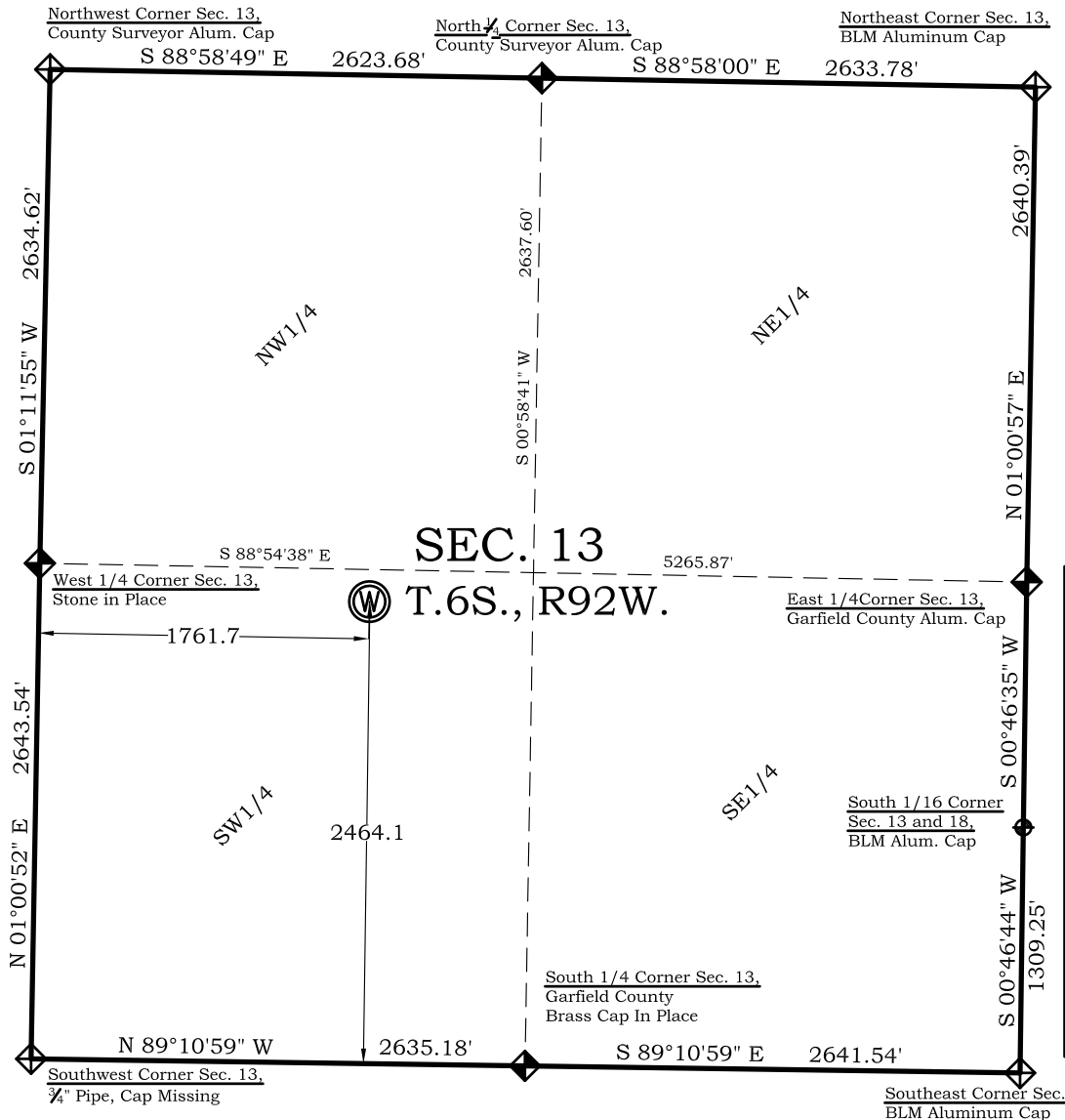


VALLEY FARMS I1

As Drilled Well Location Plat

Section 13, Township 6 South, Range 92 West



Legend

- ◈ - Field Surveyed Section Corner
- ◈ - Field Surveyed Quarter Corner
- ⊙ - Calculated Section Corner Location
- ⊕ - Field Surveyed 1/6 Corner

Surface: Valley Farms I1

2464' FSL
1762' FWL
Gnd El= 5655.0
NAD83
Lat: 39.526668894°N
Long: 107.618806485°W
NAD27
Lat: 39.5266688296°N
Long: 107.618193026°W
UTM 13 NORTH
NAD 1983
NORTHING
14365126.789
EASTING
901929.383

Prepared For Antero Resources:
As Drilled Valley Farms I1 Well Situate in The NE 1/4 SW 1/4
Section 13, Township 6 South, Range 92 West of the 6 th.
Principal Meridian, County of Garfield, State of Colorado

SURVEYOR'S CERTIFICATE

I, SCOTT E. AIBNER, A REGISTERED LAND SURVEYOR, LICENSED UNDER THE LAWS OF THE STATE OF COLORADO DO HEREBY CERTIFY THAT THE SURVEY SHOWN HEREON WAS PREPARED BY RIVER VALLEY SURVEY, INC., FOR ANTERO RESOURCES, BY MEANS OF MY DIRECT SUPERVISION AND HAS BEEN STAKED ON THE GROUND AS SHOWN ON THE PLAT AND THAT THIS PLAT IS A TRUE REPRESENTATION THEREOF.

SCOTT E. AIBNER
31143
PROFESSIONAL LAND SURVEYOR
BY: SCOTT E. AIBNER, COLORADO REG. NO. 31143

Notes:

- LATITUDE AND LONGITUDE COORDINATES ARE DIFFERENTIALLY CORRECTED AND BASED ON PUBLISHED NGS CONTROL STATION "WDP-5". SYSTEM: UTM ZONE: 13 NORTH DATUM: NAD 1983 (CONUS)
- ELEVATIONS ARE BASED ON NAVD OF 1983.
- ALL BOTTOM AND TOP HOLE LOCATIONS ARE MEASURED 90 DEGREES FROM SECTION LINE.
- USGS QUADRANGLE MAP "SILT COLORADO".
- CURRENT SURFACE LAND USE: HAY FIELD.
- PDOP AT THE TIME OF LOCATION OF SURFACE WELL = 2.5



River Valley Survey, Inc.
110 East 3rd. Street, Suite 213
Rifle, Colorado 81650
Ph: 970-379-7846

Project: Valley Farms IPad **Proj. No.** 06001-35
Field Date: 12-14-11 **Scale:** 1"= 1000'
Date: 01-20-12 **Sheet:** As Drilled

As Drilled Location Plat
Prepared For Antero Resources

Situate In:
NE 1/4 SW 1/4 Section 13, T6S., R. 92 W.
of the 6th P.M., Garfield County,
Colorado

