

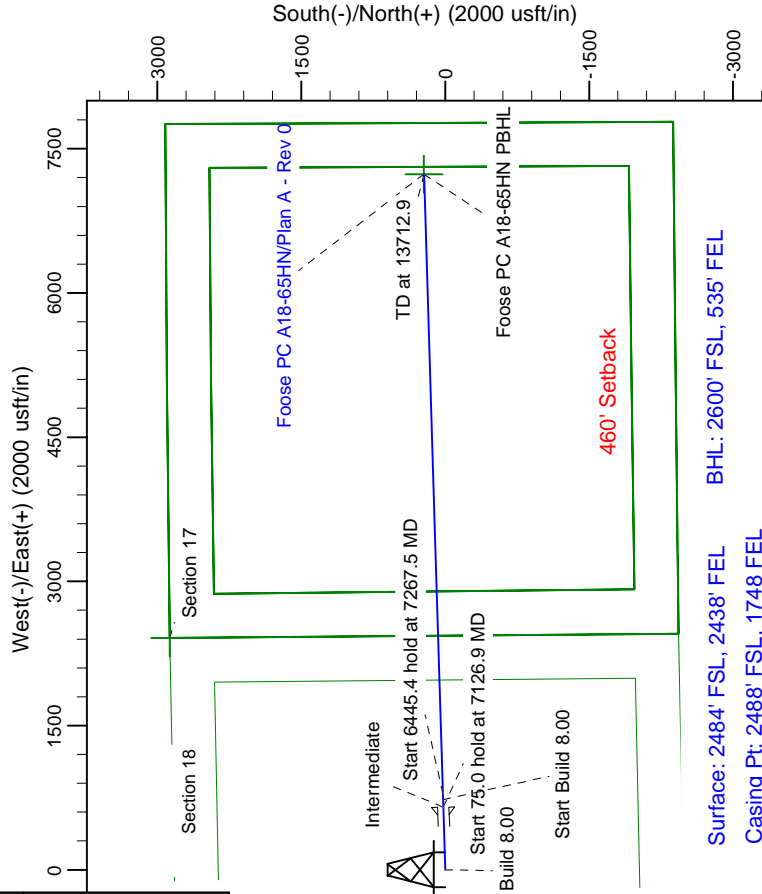
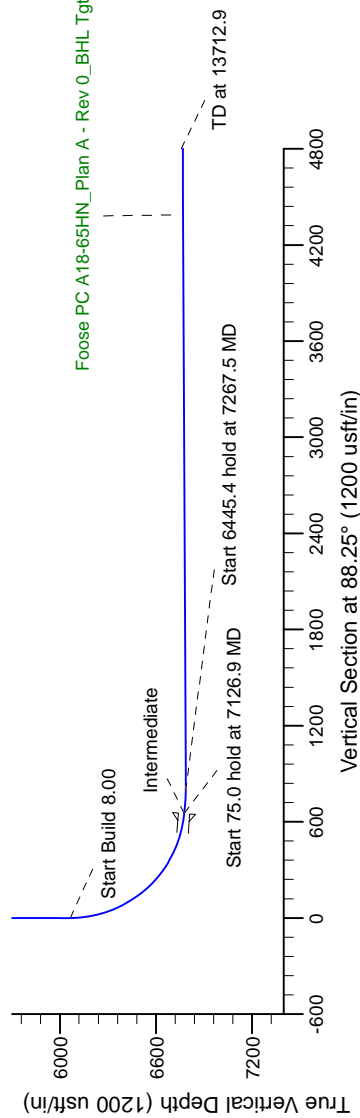
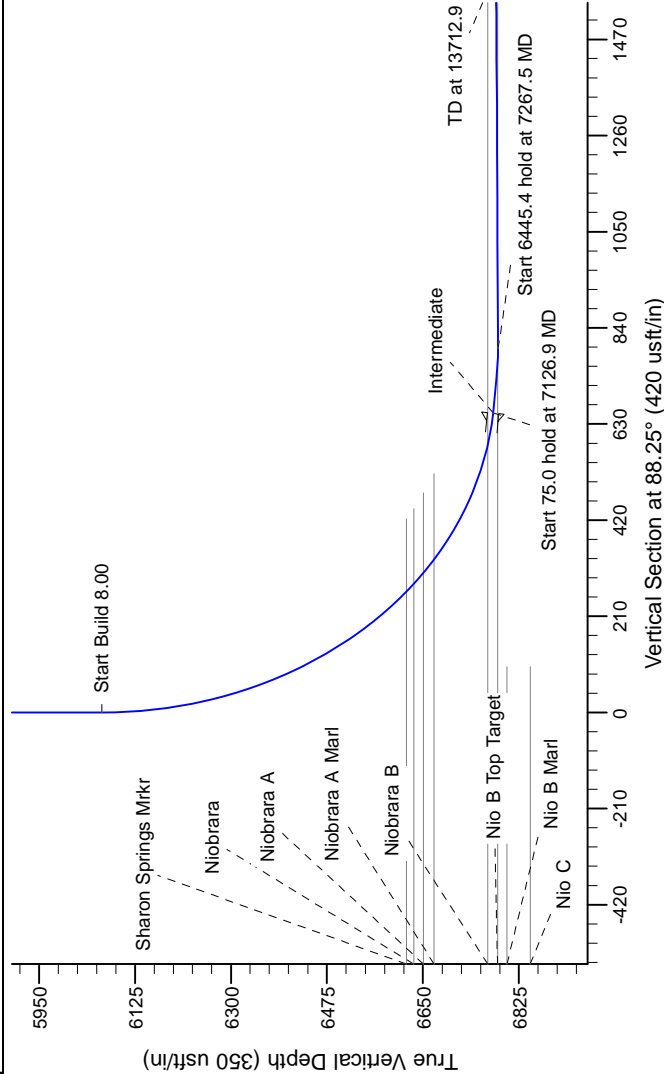
Project: Wattenberg Field, Weld County  
Site: Sec 18 T06N-R64W  
Well: Foose PC A18-65HN  
Wellbore: Original Drilling  
Design: Plan A - Rev 0 (Permitting Plan Only)

# Northern Region Drilling



## SECTION DETAILS

Sec	MD	Inc	Azi	TVD	+N/-S	+E/-W	Dleg	TFace	V/Sect	Target
1	0.0	0.00	0.00	0.0	0.0	0.0	0.00	0.00	0.0	
2	6064.4	0.00	0.00	6064.4	0.0	0.0	0.00	0.00	0.0	
3	7126.9	85.00	88.25	6777.9	19.9	653.5	8.00	88.25	653.8	
4	7201.9	85.00	88.25	6784.4	22.2	728.2	0.00	0.00	728.5	
5	7267.5	90.25	88.25	6787.1	24.2	793.7	8.00	0.00	794.0	
6	13712.9	90.25	88.25	6759.0	220.9	7236.0	0.00	0.00	7239.4	Foose PC A18-65HN PBHL



**T G M**

Magnetic Model: IGRF200510

True North: -0.59°

Magnetic North: 8.10°

Strength: 53180.2snT

Dip Angle: 67.14°

Date: 11/09/2011

Grid North is 0.59° East of True North (Grid Convergence)

Magnetic North is 8.09° East of True North (Magnetic Deviation)

To convert to a True Direction, add the Grid Convergence

To convert to a Magnetic Direction, subtract the Magnetic Deviation

To convert a Magnetic Direction to a Grid Direction, add 0.59°

WELL DETAILS: Foose PC A18-65HN (NAD 83)

North	East	Ground Level:	Longitude
1420992.49	3252430.61	4687.0	104° 35' 32.928 W

Plan: Plan A - Rev 0 (Foose PC A18-65HN/Original Drilling)

Created By: Diane Blair Date: 11-12, November 16 2011