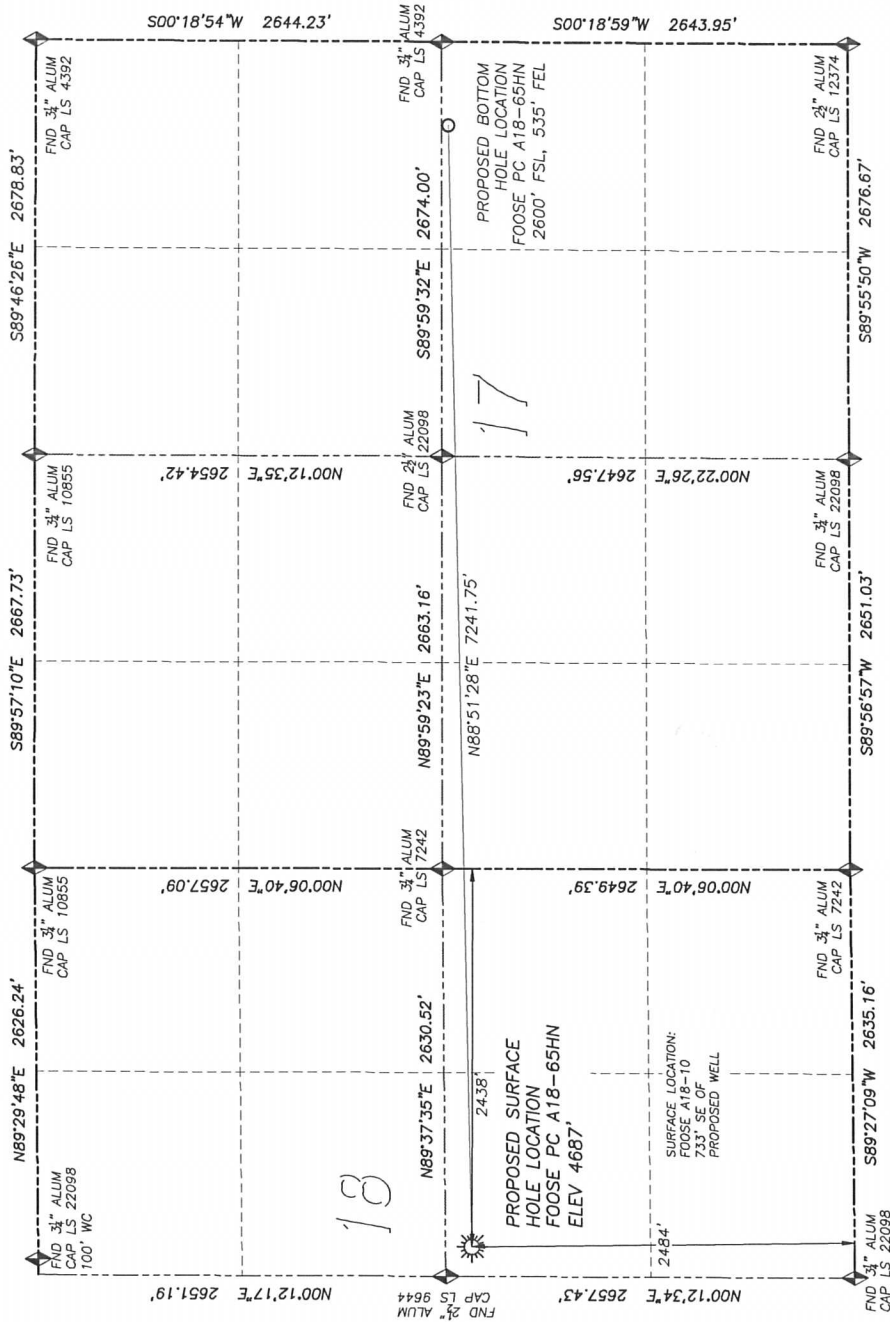


DALEY LAND SURVEYING, INC. PARKER, CO. 80134 303 953 9841

WELL LOCATION CERTIFICATE - FOOSE PC A18-65HN

SECTION 18, TOWNSHIP 6 NORTH, RANGE 64 WEST OF THE 6TH PRINCIPAL MERIDIAN

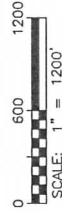


NAD 83 LATITUDE AND LONGITUDE
 FOOSE PC A18-65HN SURFACE HOLE:
 LATITUDE: N40.48548°
 LONGITUDE: W104.59248°
 ELEVATION: 4687'
 FOOTAGE: 2484' FSL, 2438' FEL
 PDOP: 1.6
 QTR/QTR: NW4/SE4
 PROP LINE: 173'± NORTH
BOTTOM HOLE:
 LATITUDE: N40.48588°
 LONGITUDE: W104.56646°
 FOOTAGE: 2600' FSL, 535' FEL
 OF SECTION 17

NEAREST EXISTING WELL:
 FOOSE A18-10 SURFACE HOLE
 LATITUDE: N40.48389°
 LONGITUDE: W104.59088°
 ELEVATION: 4691'
 733' SOUTHEAST

LEGEND

- FOUND MONUMENT AS DESCRIBED
- PROPOSED WELL
- EXISTING WELL
- BOTTOM HOLE
- ABANDONED WELL



FOR AND ON BEHALF OF:
 DALEY LAND SURVEYING INC.,
 Robert Daley, PLS 35597

NOTES:






- 1) BEARINGS FOR THIS MAP ARE ASSUMED AND BASED UPON GPS OBSERVATIONS MADE BETWEEN MONUMENTS LOCATED AT THE SOUTHEAST CORNER AND EAST QUARTER CORNER OF SECTION 18, T.6N., R.64W.
- 2) HORIZONTAL DATUM IS NAD83.
- 3) VERTICAL DATUM IS NAVD88 AND ORIGINATES FROM LOCAL C.O.R.S. STATIONS, UTILIZING THE GEOID09 MODEL.
- 4) SEE LOCATION DRAWING FOR VISIBLE IMPROVEMENTS WITHIN 400' OF PROPOSED DISTURBED AREA.
- 5) SURFACE USE: AGRICULTURE.

IN ACCORDANCE WITH A REQUEST FROM MIKE RODINE OF NOBLE ENERGY INC., DALEY LAND SURVEYING, INC. HAS DETERMINED THE SURFACE LOCATION OF THE FOOSE PC A18-65HN WELL TO BE 2484' FSL, 2438' FEL, AS MEASURED AT NINETY (90) DEGREES FROM THE SECTION LINES OF SECTION 18, TOWNSHIP 6 NORTH, RANGE 64 WEST OF THE 6TH PRINCIPAL MERIDIAN, WELD COUNTY, COLORADO. THE BOTTOM HOLE LOCATION, PROVIDED BY THE CLIENT, IS TO BE 2600' FSL, 535' FEL OF SECTION 17, T.6N., R.64W.

I HEREBY CERTIFY THAT THIS WELL LOCATION CERTIFICATE WAS PREPARED BY ME OR UNDER MY DIRECT SUPERVISION, THAT THE WORK WAS COMPLETED ON 9/6/2011 FOR AND ON BEHALF OF NOBLE ENERGY, INC., AND THAT THIS MAP DOES NOT REPRESENT A BOUNDARY SURVEY, IT IS NOT A LAND SURVEY PLAT OR AN IMPROVEMENT SURVEY PLAT AND IT IS NOT TO BE RELIED UPON FOR THE ESTABLISHMENT OF FENCE, BUILDING OR OTHER FUTURE IMPROVEMENT LINES.

NOTICE: According to Colorado law you MUST commence any legal action based upon any defect in this W.L.C. within three years after you first discover such defect. In no event may any action based upon any such defect in this W.L.C. be commenced more than ten years from the date of the certification shown herein.

SITE SKETCH - FOOSE PC A18-65HN

 FOUND MONUMENT
AS DESCRIBED
 PROPOSED WELL
 EXISTING WELL
 BOTTOM HOLE
 ABANDONED WELL

1. THIS DOES NOT REPRESENT A BOUNDARY SURVEY
2. HORIZONTAL DATUM IS NAD83
3. VERTICAL DATUM IS NAVD88 AND ORIGINATES FROM LOCAL C.O.R.S. STATIONS, UTILIZING THE GEOID09 MODEL.

①	WPF III A18-Z	SW/NE SEC. 18	1368' FNL, 1415' FEL	1981' FNL, 1980' FEL	1794' FSL, 465' FWL
			LAT. N40.48950°	LAT. N40.48781°	LAT. N40.48365°
			LONG. W104.58879°	LONG. W104.59083°	LONG. W104.58205°
			EL: 4693'	EL: 4693'	EL: 4720'
			PDOP 2.0	PDOP 1.2	PDOP 2.2
②	CARLSON A18-17	SE/NE SEC. 18	1368' FNL, 1415' FEL	1981' FNL, 1980' FEL	1794' FSL, 465' FWL
			LAT. N40.48950°	LAT. N40.48781°	LAT. N40.48365°
			LONG. W104.58879°	LONG. W104.59083°	LONG. W104.58205°
			EL: 4703'	EL: 4703'	EL: 4720'
			PDOP 2.0	PDOP 1.2	PDOP 2.2
③	CARLSON 42-18	SE/NE SEC. 18	1887' FNL, 609' FEL	1987' FNL, 609' FEL	1794' FSL, 465' FWL
			LAT. N40.48950°	LAT. N40.48781°	LAT. N40.48365°
			LONG. W104.58879°	LONG. W104.59083°	LONG. W104.58205°
			EL: 4714'	EL: 4714'	EL: 4720'
			PDOP 2.6	PDOP 1.8	PDOP 2.2
④	FOOSE A18-10	NW/SE SEC. 18	1899' FSL, 1990' FEL	1989' FSL, 1251' FEL	1903' FSL, 500' FEL
			LAT. N40.48389°	LAT. N40.48276°	LAT. N40.48394°
			LONG. W104.59088°	LONG. W104.58822°	LONG. W104.58552°
			EL: 4691'	EL: 4699'	EL: 4710'
			PDOP 1.8	PDOP 2.2	PDOP 1.6
⑤	FOOSE USX A18-23	NE/SE SEC. 18	1903' FSL, 1251' FEL	1903' FSL, 500' FEL	1903' FSL, 500' FEL
			LAT. N40.48276°	LAT. N40.48394°	LAT. N40.48394°
			LONG. W104.58822°	LONG. W104.58552°	LONG. W104.58205°
			EL: 4699'	EL: 4710'	EL: 4720'
			PDOP 2.2	PDOP 1.6	PDOP 2.2
⑥	FOOSE A18-9	NE/SE SEC. 18	1903' FSL, 500' FEL	1903' FSL, 500' FEL	1903' FSL, 500' FEL
			LAT. N40.48394°	LAT. N40.48394°	LAT. N40.48394°
			LONG. W104.58552°	LONG. W104.58552°	LONG. W104.58205°
			EL: 4710'	EL: 4710'	EL: 4720'
			PDOP 1.6	PDOP 1.6	PDOP 2.2
⑦	RODRIGUEZ 17-32	NW/SE SEC. 17	1794' FSL, 465' FWL	1794' FSL, 465' FWL	1794' FSL, 465' FWL
			LAT. N40.48365°	LAT. N40.48365°	LAT. N40.48365°
			LONG. W104.58205°	LONG. W104.58205°	LONG. W104.58205°
			EL: 4720'	EL: 4720'	EL: 4720'
			PDOP 2.2	PDOP 2.2	PDOP 2.2

(8) **GUILLEY 12-17**
SW/NW SEC. 17
2155' FNL, 868' FWL
LAT. N40.48738'
LONG. W104.58060'
EL: 4731'
PDOP 2.0

(9) **AMIGO 17-24**
SE/NW SEC. 17
2137' FNL, 2047' FWL
LAT. N40.48742'
LONG. W104.57636'
EL: 4765'
PDOP 2.0

(14) **RODRIGUEZ 17-31**
NE/SW SEC. 17
1809' FSL, 1901' FWL
LAT. N40.48370'
LONG. W104.57689'
EL: 4752'
PDOP 1.7

(11) **STARMAN USX A17-23**
NE/SE SEC. 17
1392' FSL, 1188' FEL
LAT. N40.48256'
LONG. W104.56883'
EL: 4783'
PDOP 1.8

(12) **GUILLEY 17-13**
SW/NE SEC. 17
2058' FNL, 2192' FEL
LAT. N40.48763'
LONG. W104.57240'
EL: 4779'
PDOP 2.1

(13) **OWL CREEK 8-17**
SE/NE SEC. 17
1986' FNL, 873' FEL
LAT. N40.48781'
LONG. W104.56694'
EL: 4810'
PDOP 2.1