

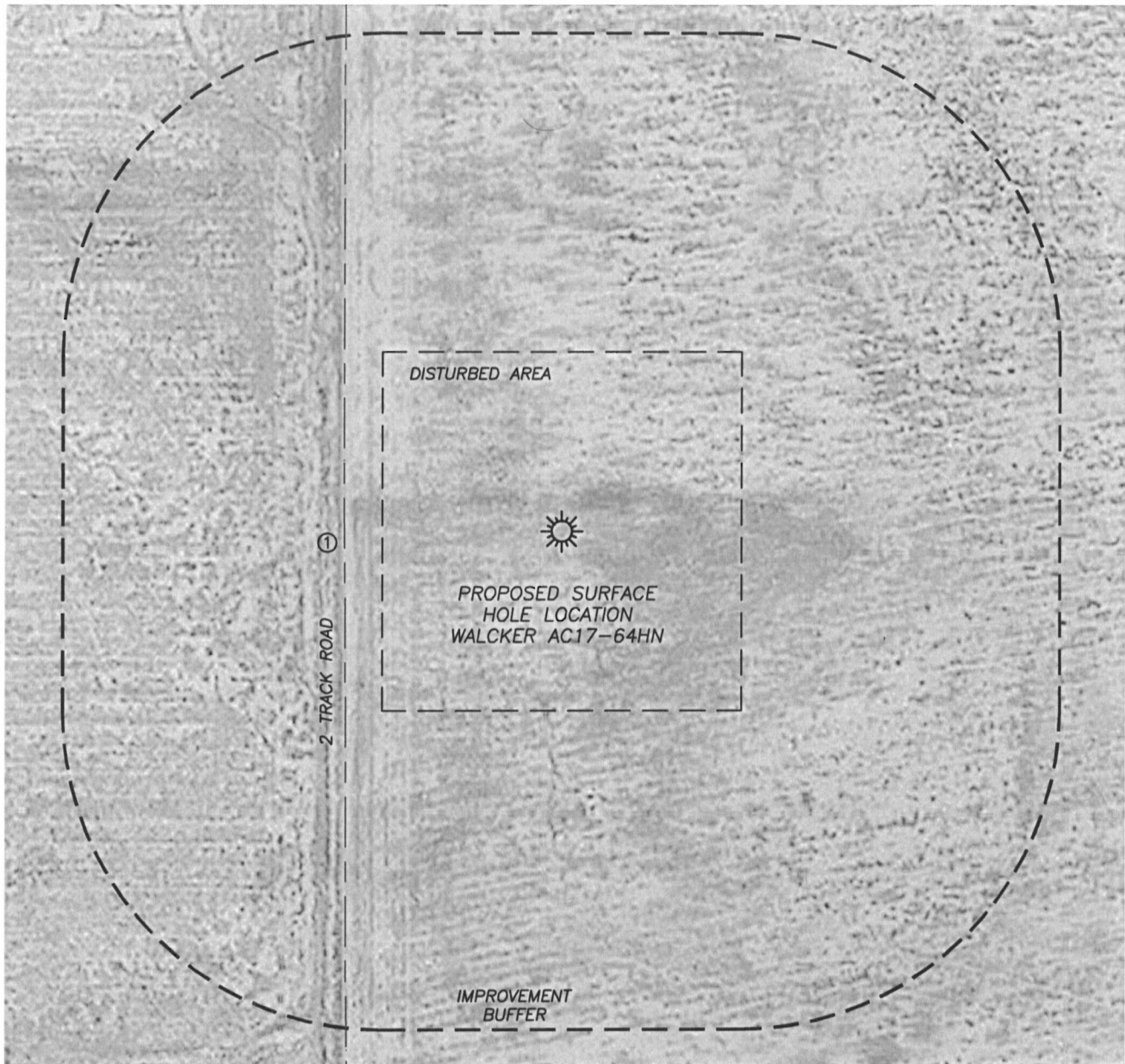
DALEY LAND SURVEYING, INC.

PARKER, CO. 80134

303 953 9841

LOCATION DRAWING WALCKER AC17-64HN

SECTION 17, TOWNSHIP 7 NORTH, RANGE 63 WEST OF THE 6TH PRINCIPAL MERIDIAN



IMPROVEMENTS

1. 2 TRACK ROAD: 272'± W

DISTANCE TO NEAREST:

BUILDING: 3040'± SW
PUBLIC ROAD: 5280'±
ABOVE GRND UTILITY: 3305'± SW
RAILROAD: 5280'±
PROP. LINE: 275'± W

