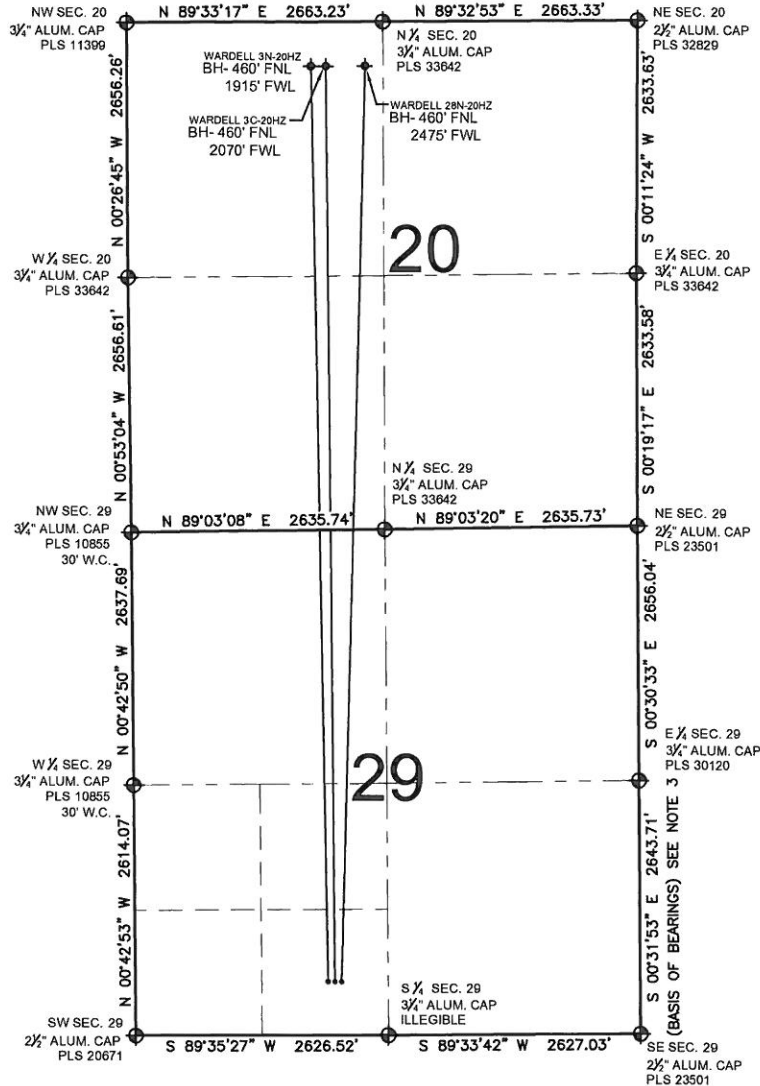


PAD DRAWING: WARDELL 3 PAD

SECTION 29, TOWNSHIP 3 NORTH, RANGE 65 WEST, 6TH P.M.



LEGEND

- ⊕ = EXISTING MONUMENT
- ⊙ = PROPOSED WELL
- ⬤ = BOTTOM HOLE
- ⬧ = EXISTING WELL
- BH= BOTTOM HOLE

NOTES:

- THIS FIELD SURVEY CONFORMS TO THE MINIMUM STANDARDS SET BY THE C.O.G.C.C., RULE NO. 215
- HORIZONTAL POSITIONS AND ORTHOMETRIC ELEVATIONS SHOWN AT THE WELL HEAD, ARE BASED ON GPS-RTK POSITIONS DERIVED FROM MINIMUM 2-HOUR STATIC OBSERVATIONS CORRECTED BY THE NATIONAL GEODETIC SURVEY ONLINE POSITIONING USER SERVICE, O.P.U.S.
DATUM: HORIZONTAL = NAD83/2007, VERTICAL = NAVD88
- THE BASIS OF BEARINGS ARE STATE PLANE COORDINATE SYSTEM GRID BEARINGS SHOWN HEREON BETWEEN THE DESCRIBED THE MONUMENTS SHOWN HEREON.
- GRID DISTANCES ARE SHOWN, AS MEASURED IN THE FIELD, WITH TIES TO WELLS MEASURED PERPENDICULAR TO SECTION LINES.

NOTES:

- WARDELL 3N-20HZ TO BE AT 561' FSL, 2096' FWL.
BOTTOM HOLE AT 460' FNL & 1915' FWL.
- WARDELL 3C-20HZ TO BE AT 561' FSL, 2112' FWL.
BOTTOM HOLE AT 460' FNL & 2070' FWL.
- WARDELL 28N-20HZ TO BE AT 561' FSL, 2128' FWL.
BOTTOM HOLE AT 460' FNL & 2475' FWL.

PREPARED BY:



KERR-MCGEE OIL & GAS ONSHORE LP

FIELD DATE: 10-10-11	PAD NAME: WARDELL 3 PAD
DRAWING DATE: 10-15-11	SURFACE LOCATION: WELD COUNTY, COLORADO
BY: SMF	SE 1/4 SW 1/4, SEC. 29, T3N, R65W, 6TH P.M.

