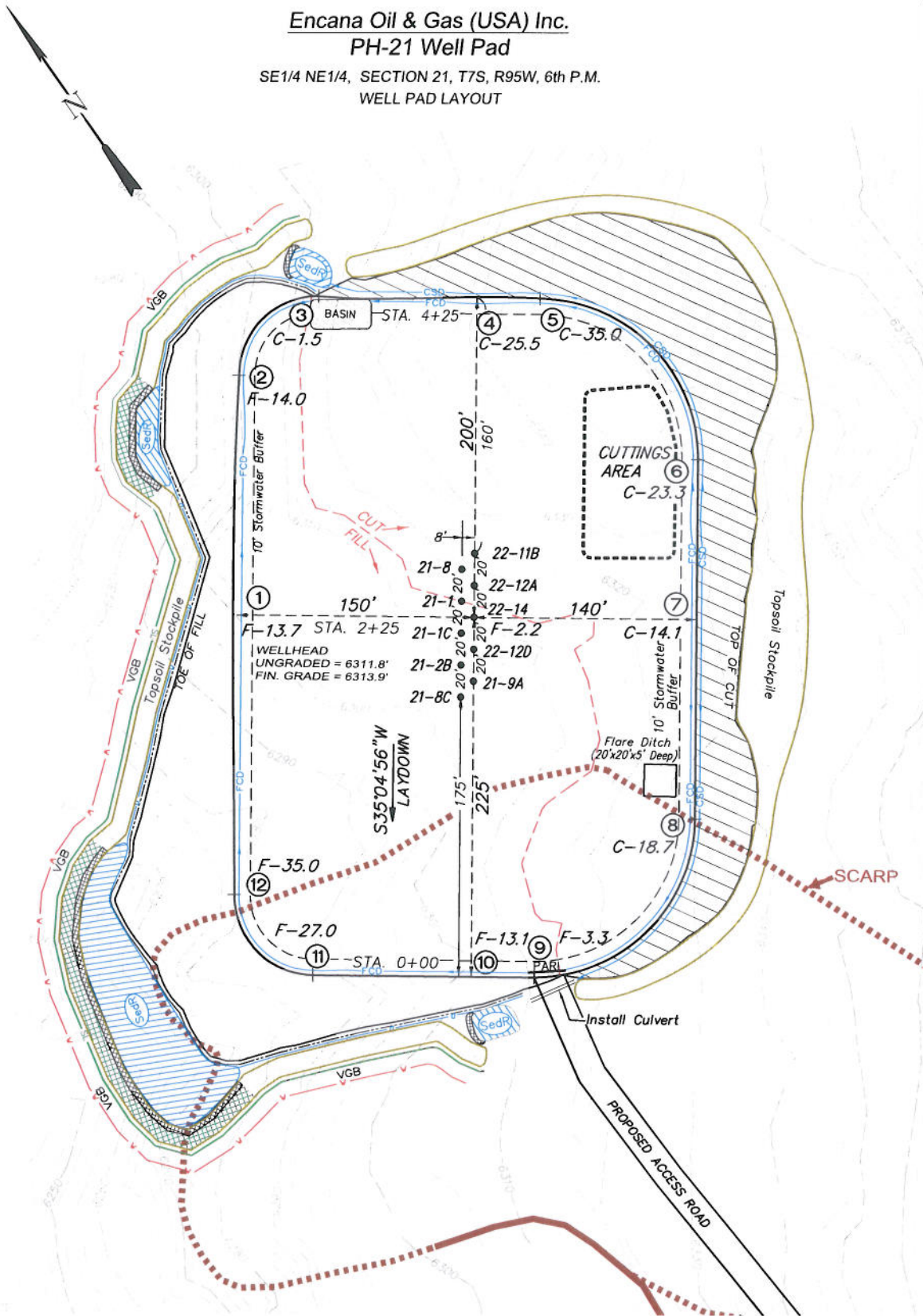


Encana Oil & Gas (USA) Inc.

PH-21 Well Pad

SE1/4 NE1/4, SECTION 21, T7S, R95W, 6th P.M.
WELL PAD LAYOUT



Total Surface Disturbance = **5.29 Acres**
(See Sheet 4 for Details)

- NOTES:
- (1) Slope Track and/or Terrace all Slopes and Piles
 - (2) Erosion Control & Seed Topsoil
 - (3) Erosion Control & Seed Outside
 - (4) Slope away from Substructure Areas 1% to 3% to Flow Control

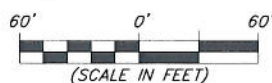
LEGEND

- SLASH = SLASH
- ST = SEDIMENT TRAP
- SevR = SEDIMENT RESERVOIR
- R.O.D. = RUN-ON DIVERSION
- PERM = PERIMETER CONTROL (WATTLES)
- CSD = CUT SLOPE DIVERSION (BERM TOE OF CUT SLOPE)
- D = FILL DIVERSION TO SEDIMENT TRAP
- VGB = VEGETATION BUFFER (UNDISTURBED LAND INSIDE PC)
- FCD = FLOW CONTROL DITCH
- PARI = PAD/ACCESS ROAD INTERFACE
- SEEDER = LEVEL SPREADER
- TOE BERM (PLACED AT TOE OF ALL FILL SLOPES/STOCKPILES)
- TOPSOIL BERM
- SEED, ECB & FLEX

SURFACE DISTURBANCE (IN ACRES)	
Well Pad	2.7
Side Slopes	1.3
Stockpiles & Stormwater	1.29
TOTAL	5.29



906 Main Street
Evanston, Wyoming 82930
Phone No. (307) 789-4545

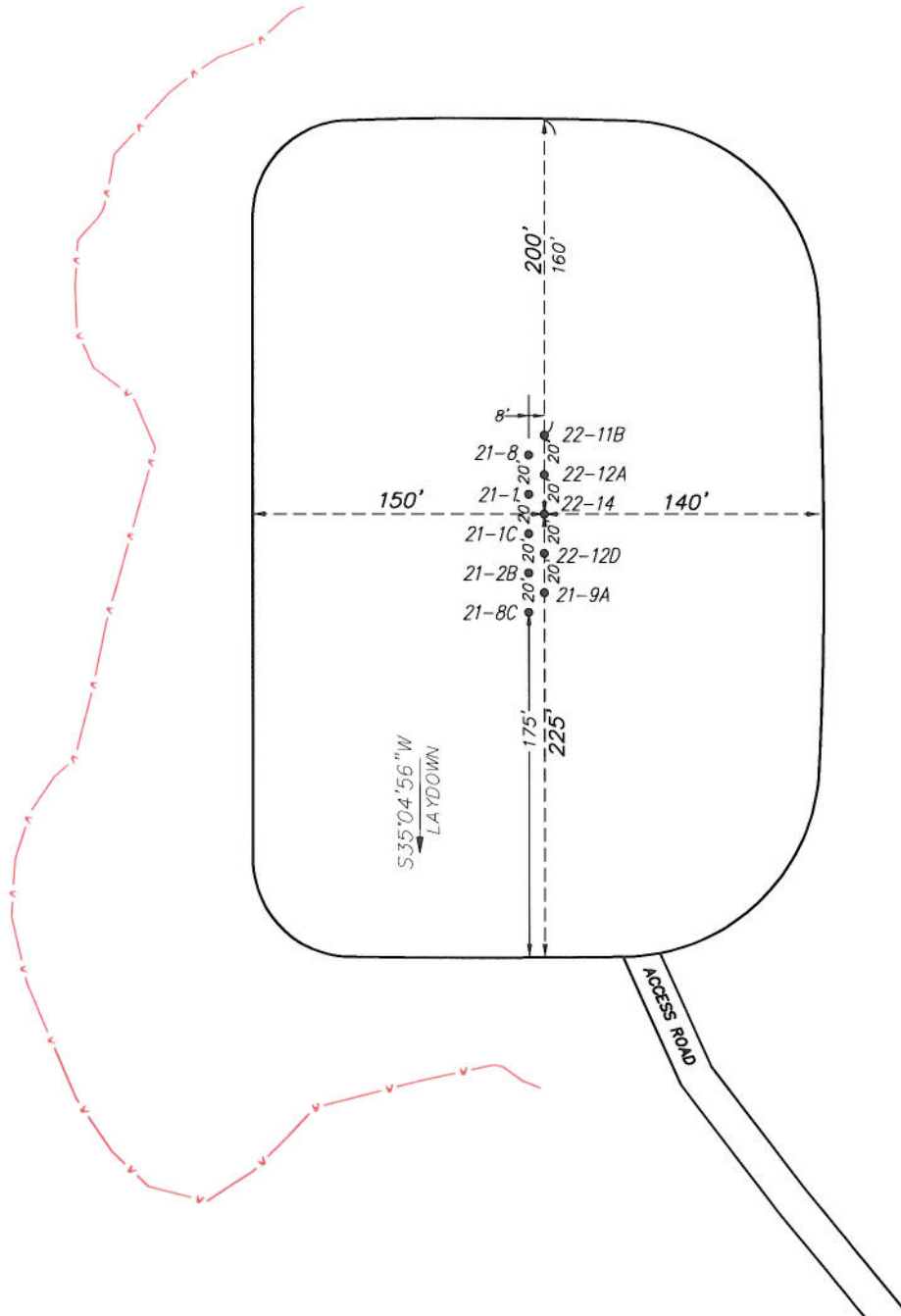


Well Pad Layout		Scale: 1" = 60'	SHEET
Project	No. 05-04-36	Date Surveyed: 6/29/05	3 OF 10
Date	1/12/11	Latest Revision	
Drawn:		Date: 11/08/11	

Encana Oil & Gas (USA) Inc.

PH-21 Well Pad

SE1/4 NE1/4, SECTION 21, T7S, R95W, 6th P.M.
PRE-CONSTRUCTION PLAT



Total Surface Disturbance = **5.29 Acres**
(See Sheet 4 for Details)

NOTES:

- (1) Slope Track and/or Terrace all Slopes and Piles
- (2) Erosion Control & Seed Topsoil
- (3) Erosion Control & Seed Outside
- (4) Slope away from Substructure Areas 1% to 3% to Flow Control

LEGEND:

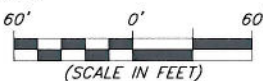
- SLASH
- ST = SEDIMENT TRAP
- Seal = SEDIMENT RESERVOIR
- R.O.D. = RUN-ON DIVERSION
- PERIMETER CONTROL (WATTLES)
- CSD = CUT SLOPE DIVERSION (BERM TOE OF CUT SLOPE)
- D = FILL DIVERSION TO SEDIMENT TRAP
- VCB = VEGETATION BUFFER (UNDISTURBED LAND INSIDE PC)
- FCD = FLOW CONTROL DITCH
- PAR = PAD/ACCESS ROAD INTERFACE
- LEVEL SPREADER
- TOE BERM (PLACED AT TOE OF ALL FILL SLOPES/STOCKPILES)
- TOPSOIL BERM
- SEED, ECB & FLEX
- SEED

PRE-CONSTRUCTION PHASE COMPLETE,
AUTHORIZATION TO CONTINUE
CONSTRUCTION.

SIGNATURE: _____



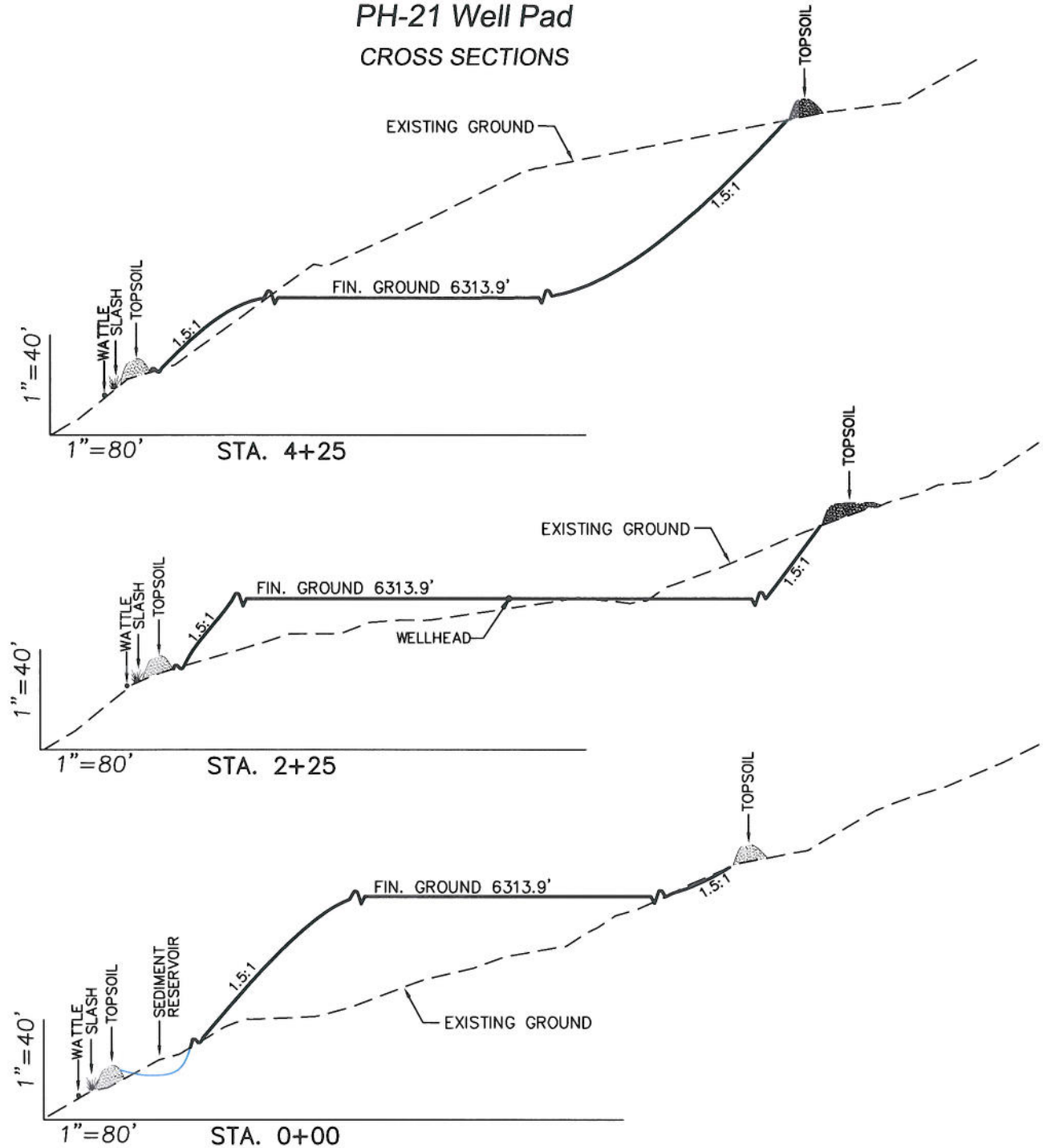
906 Main Street
Evanston, Wyoming 82930
Phone No. (307) 789-4545



Pre-Construction		Scale: 1" = 60'	SHEET
Project No.	05-04-36	Date Surveyed: 6/29/05	3a
Date Drawn: 1/12/11		Latest Revision Date: 9/22/11	
			OF 10

EnCana Oil & Gas (USA) Inc.

PH-21 Well Pad CROSS SECTIONS



SURFACE DISTURBANCE (IN ACRES)

Well Pad	2.7
Side Slopes	1.3
Stockpiles & Stormwater	1.29
TOTAL	5.29

NOTE:
ALL CUT AND FILL
SLOPES ARE AT 1.5:1
UNLESS OTHERWISE
NOTED.

EARTHWORK QUANTITIES

(in Cubic Yards w/ 0% shrink/swell)

ITEM	CUT	FILL	6" TOPSOIL	EXCESS
PAD	42982	42982	Topsoil not included in Excavation	0
PIT	0	0		0
TOTALS	42982	42982	3189	0



906 Main Street
Evanston, Wyoming 82930
Phone No. (307) 789-4545

Cross Sections

Project No. 05-04-36
Date Drawn: 1/12/11

Scale: As Shown

Date Surveyed: 6/29/05
Latest Revision Date: 9/22/11

SHEET

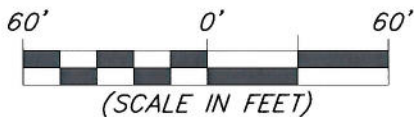
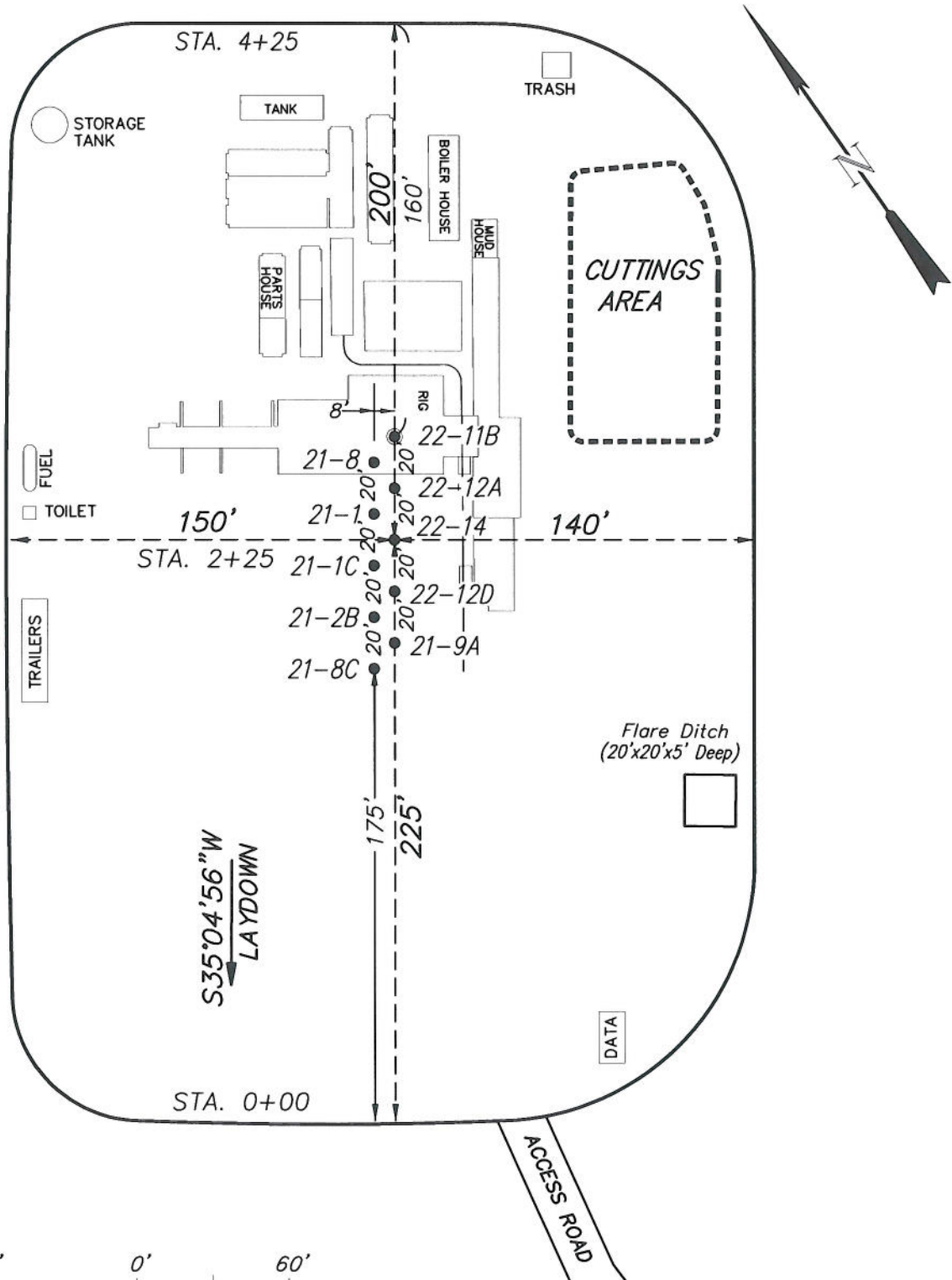
4

OF 10

Encana Oil & Gas (USA) Inc.

PH-21 Well Pad

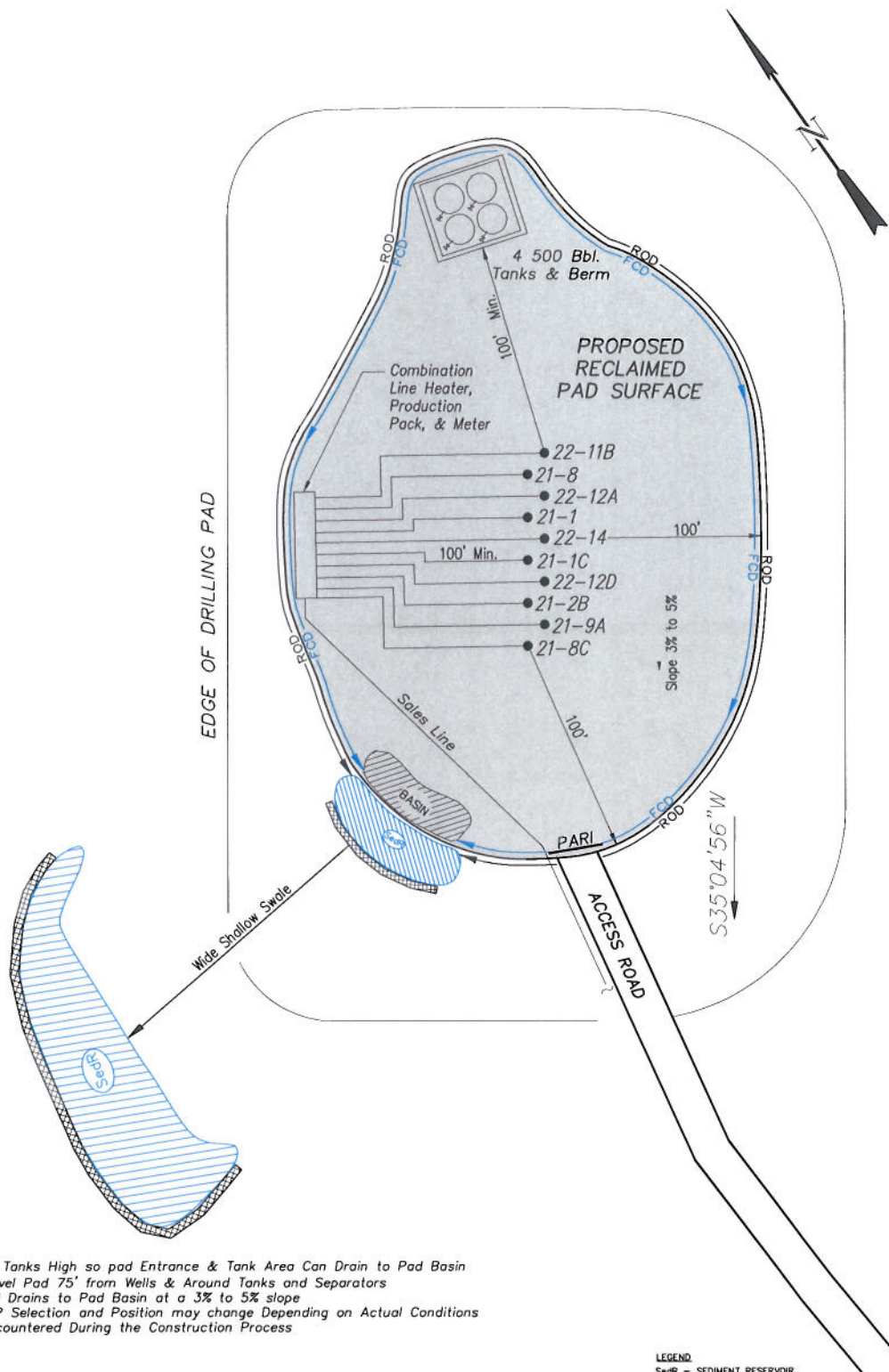
TYPICAL RIG LAYOUT



906 Main Street
Evanston, Wyoming 82930
Phone No. (307) 789-4545

Rig Layout		Scale: 1" = 60'	SHEET
Project No.	05-04-36	Date Surveyed:	6/29/05
Date Drawn:	1/12/11	Latest Revision Date:	11/08/11
			5 OF 10

Encana Oil & Gas (USA) Inc.
PH-21 Well Pad
PRODUCTION SCHEMATIC



NOTES:

1. Set Tanks High so pad Entrance & Tank Area Can Drain to Pad Basin
2. Gravel Pad 75' from Wells & Around Tanks and Separators
3. Pad Drains to Pad Basin at a 3% to 5% slope
4. BMP Selection and Position may change Depending on Actual Conditions Encountered During the Construction Process

NOTE:

Actual Equipment Layout and Reclaimed Pad Surface Area May Change due to Production Requirements or Site Conditions.

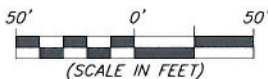
ESTIMATED AREAS
RECLAIMED AREA: 4.01 ACRES
UNRECLAIMED AREA: 1.28 ACRES
(PRODUCTION PAD)

LEGEND:

- SedR = SEDIMENT RESERVOIR
- R.O.D. = RUN-ON DIVERSION
- W = PERIMETER CONTROL (WATTLIES)
- CSO = CUT SLOPE DIVERSION (BERM TOE OF CUT SLOPE)
- D = FILL DIVERSION TO SEDIMENT TRAP
- VGB = VEGETATION BUFFER (UNDISTURBED LAND INSIDE PC)
- FCD = FLOW CONTROL DITCH
- PARI = PAD/ACCESS ROAD INTERFACE
- LEVEL SPREADER
- SEED, ECB & FLEX
- SEED



906 Main Street
Evanston, Wyoming 82930
Phone No. (307) 789-4545

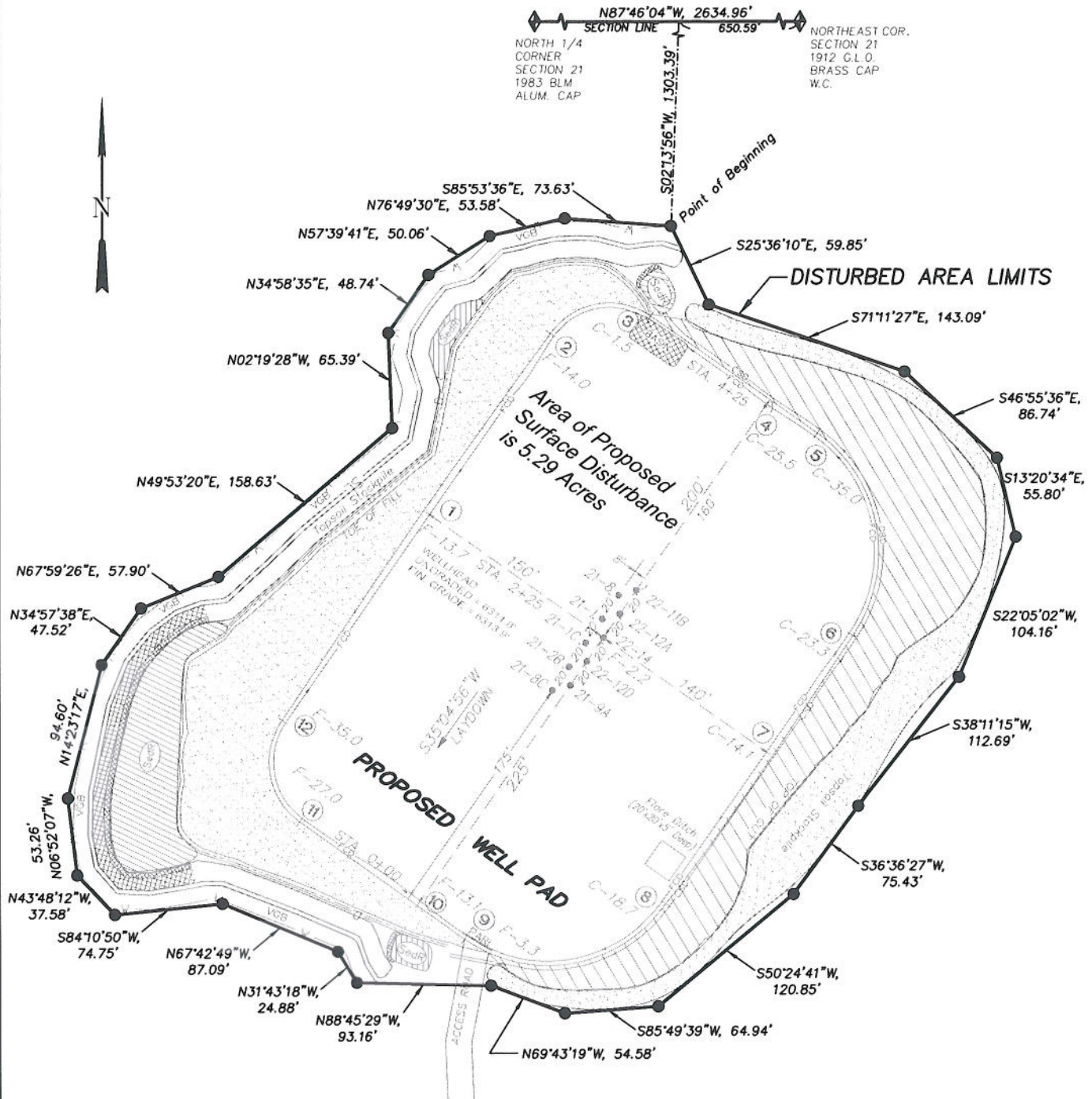


Production Schematic
Project No. 05-04-36
Date Drawn: 1/12/11

Scale: 1" = 50'
Date Surveyed: 6/29/05
Latest Revision Date: 9/22/11

SHEET
6
OF 10

Encana Oil & Gas (USA) Inc.
PH-21 Well Pad
Section 21, T7S, R95W, 6th P.M.
SURFACE DISTURBANCE AREA



100' 0' 100'
 (SCALE IN FEET)



906 Main Street
 Evanston, Wyoming 82930
 Phone No. (307) 789-4545

Surface Disturbance		Scale: 1" = 100'	SHEET 7 OF 10
Project No.	05-04-36	Date Surveyed: 6/29/05	
Date Drawn: 1/12/11		Latest Revision Date: 9/22/11	