



**Scientific Drilling**  
Rocky Mountain Operations

Company: OXY USA RMAT  
Project: Garfield County, CO NAD27  
Site: Cascade Creek 697-15B Pad



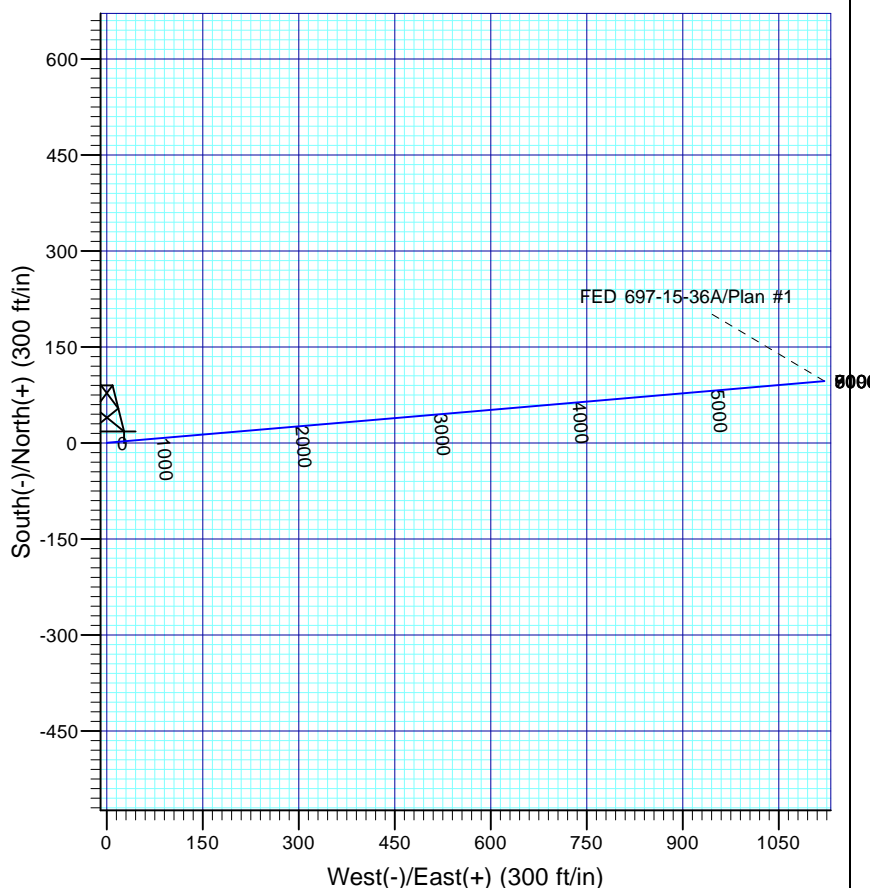
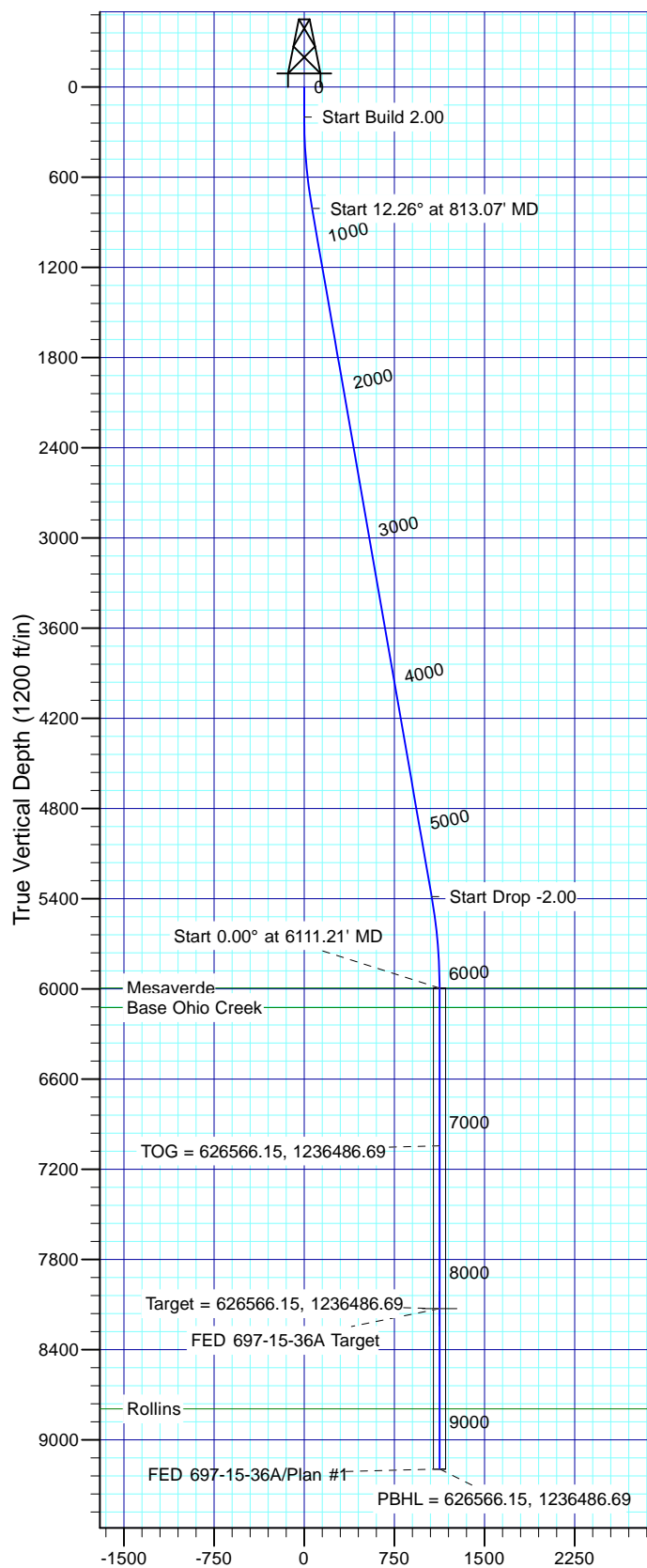
Well Details: FED 697-15-36A

TVD Reference: GL 8439' & RKB 30' @ 8469.00ft (H&P Rig) Ground Level: 8439.00  
+N/-S 0.00 +E/-W 0.00 Northing 626503.35 Easting 1235362.78 Latitude 39° 31' 20.083 N Longitude 108° 12' 39.225 W Slot C



Azimuths to True North  
Magnetic North: 10.44°

Magnetic Field  
Strength: 52208.9nT  
Dip Angle: 65.72°  
Date: 7/11/2011  
Model: IGRF2010



#### FORMATION TOP DETAILS

TVDPath	MDPath	Formation
5994.00	6110.21	Mesaverde
6124.00	6240.21	Base Ohio Creek
8794.00	8910.21	Rollins

Plan: Plan #1

10:03, July 15 2011  
Created By: Janie Cooke

PROJECT DETAILS: Garfield County, CO NAD27

Geodetic System: US State Plane 1927 (Exact solution)  
Datum: NAD 1927 (NADCON CONUS)  
Ellipsoid: Clarke 1866  
Zone: Colorado Central 502

System Datum: Mean Sea Level

#### SECTION DETAILS

Sec	MD	Inc	Azi	TVD	+N/-S	+E/-W	Dleg	TFace	VSeet	Target
1	0.00	0.00	0.00	0.00	0.00	0.00	0.00	0.00	0.00	
2	200.00	0.00	0.00	200.00	0.00	0.00	0.00	0.00	0.00	
3	813.07	12.26	85.09	808.40	5.59	65.11	2.00	85.09	65.35	
4	5498.14	12.26	85.09	5386.60	90.71	1056.43	0.00	0.00	1060.32	
5	6111.21	0.00	0.00	5995.00	96.31	1121.54	2.00	180.00	1125.67	
6	8243.21	0.00	0.00	8127.00	96.31	1121.54	0.00	0.00	1125.67	FED 697-15-36A Target
7	9310.21	0.00	0.00	9194.00	96.31	1121.54	0.00	0.00	1125.67	

# **OXY USA RMAT**

**Garfield County, CO NAD27  
Cascade Creek 697-15B Pad  
FED 697-15-36A - Slot C**

**OH**

**Plan: Plan #1**

## **Standard Planning Report**

**15 July, 2011**





<b>Database:</b>	Rockies Compass Server	<b>Local Co-ordinate Reference:</b>	Well FED 697-15-36A - Slot C
<b>Company:</b>	OXY USA RMAT	<b>TVD Reference:</b>	GL 8439' & RKB 30' @ 8469.00ft (H&P Rig)
<b>Project:</b>	Garfield County, CO NAD27	<b>MD Reference:</b>	GL 8439' & RKB 30' @ 8469.00ft (H&P Rig)
<b>Site:</b>	Cascade Creek 697-15B Pad	<b>North Reference:</b>	True
<b>Well:</b>	FED 697-15-36A	<b>Survey Calculation Method:</b>	Minimum Curvature
<b>Wellbore:</b>	OH		
<b>Design:</b>	Plan #1		

<b>Project</b>	Garfield County, CO NAD27		
<b>Map System:</b>	US State Plane 1927 (Exact solution)	<b>System Datum:</b>	Mean Sea Level
<b>Geo Datum:</b>	NAD 1927 (NADCON CONUS)		
<b>Map Zone:</b>	Colorado Central 502		

Site		Cascade Creek 697-15B Pad			
Site Position:		Northing:	626,511.21 usft	Latitude:	39° 31' 20.159 N
From:	Lat/Long	Easting:	1,235,360.14 usft	Longitude:	108° 12' 39.262 W
Position Uncertainty:	0.00 ft	Slot Radius:	13.200 in	Grid Convergence:	-1.71 °

Well		FED 697-15-36A - Slot C				
Well Position	+N/-S	-7.77 ft	Northing:	626,503.35 usft	Latitude:	39° 31' 20.083 N
	+E/-W	2.87 ft	Easting:	1,235,362.78 usft	Longitude:	108° 12' 39.225 W
Position Uncertainty		0.00 ft	Wellhead Elevation:		Ground Level:	8,439.00 ft

<b>Wellbore</b>	OH				
<b>Magnetics</b>	<b>Model Name</b>	<b>Sample Date</b>	<b>Declination (°)</b>	<b>Dip Angle (°)</b>	<b>Field Strength (nT)</b>
	IGRF2010	7/11/2011	10.44	65.72	52,209

<b>Design</b>	Plan #1			
<b>Audit Notes:</b>				
<b>Version:</b>	<b>Phase:</b>	PLAN	<b>Tie On Depth:</b>	0.00
<b>Vertical Section:</b>	<b>Depth From (TVD)</b>	<b>+N/-S</b>	<b>+E/-W</b>	<b>Direction</b>
	(ft)	(ft)	(ft)	(°)
	0.00	0.00	0.00	85.09

<b>Plan Sections</b>										
Measured Depth (ft)	Inclination (°)	Azimuth (°)	Vertical Depth (ft)	+N/-S (ft)	+E/-W (ft)	Dogleg Rate (°/100ft)	Build Rate (°/100ft)	Turn Rate (°/100ft)	TFO (°)	Target
0.00	0.00	0.00	0.00	0.00	0.00	0.00	0.00	0.00	0.00	
200.00	0.00	0.00	200.00	0.00	0.00	0.00	0.00	0.00	0.00	
813.07	12.26	85.09	808.40	5.59	65.11	2.00	2.00	0.00	85.09	
5,498.14	12.26	85.09	5,386.60	90.71	1,056.43	0.00	0.00	0.00	0.00	
6,111.21	0.00	0.00	5,995.00	96.31	1,121.54	2.00	-2.00	0.00	180.00	
8,243.21	0.00	0.00	8,127.00	96.31	1,121.54	0.00	0.00	0.00	0.00	FED 697-15-36A Tarç
9,310.21	0.00	0.00	9,194.00	96.31	1,121.54	0.00	0.00	0.00	0.00	



<b>Database:</b>	Rockies Compass Server	<b>Local Co-ordinate Reference:</b>	Well FED 697-15-36A - Slot C
<b>Company:</b>	OXY USA RMAT	<b>TVD Reference:</b>	GL 8439' & RKB 30' @ 8469.00ft (H&P Rig)
<b>Project:</b>	Garfield County, CO NAD27	<b>MD Reference:</b>	GL 8439' & RKB 30' @ 8469.00ft (H&P Rig)
<b>Site:</b>	Cascade Creek 697-15B Pad	<b>North Reference:</b>	True
<b>Well:</b>	FED 697-15-36A	<b>Survey Calculation Method:</b>	Minimum Curvature
<b>Wellbore:</b>	OH		
<b>Design:</b>	Plan #1		

Planned Survey									
Measured Depth (ft)	Inclination (°)	Azimuth (°)	Vertical Depth (ft)	+N/-S (ft)	+E/-W (ft)	Vertical Section (ft)	Dogleg Rate (°/100ft)	Build Rate (°/100ft)	Turn Rate (°/100ft)
0.00	0.00	0.00	0.00	0.00	0.00	0.00	0.00	0.00	0.00
100.00	0.00	0.00	100.00	0.00	0.00	0.00	0.00	0.00	0.00
200.00	0.00	0.00	200.00	0.00	0.00	0.00	0.00	0.00	0.00
Start Build 2.00									
300.00	2.00	85.09	299.98	0.15	1.74	1.75	2.00	2.00	0.00
400.00	4.00	85.09	399.84	0.60	6.95	6.98	2.00	2.00	0.00
500.00	6.00	85.09	499.45	1.34	15.64	15.69	2.00	2.00	0.00
600.00	8.00	85.09	598.70	2.39	27.78	27.88	2.00	2.00	0.00
700.00	10.00	85.09	697.47	3.72	43.36	43.52	2.00	2.00	0.00
800.00	12.00	85.09	795.62	5.36	62.37	62.60	2.00	2.00	0.00
813.07	12.26	85.09	808.40	5.59	65.11	65.35	2.00	2.00	0.00
Start 12.26° at 813.07' MD									
900.00	12.26	85.09	893.35	7.17	83.50	83.81	0.00	0.00	0.00
1,000.00	12.26	85.09	991.07	8.99	104.66	105.05	0.00	0.00	0.00
1,100.00	12.26	85.09	1,088.79	10.80	125.82	126.28	0.00	0.00	0.00
1,200.00	12.26	85.09	1,186.51	12.62	146.98	147.52	0.00	0.00	0.00
1,300.00	12.26	85.09	1,284.22	14.44	168.14	168.76	0.00	0.00	0.00
1,400.00	12.26	85.09	1,381.94	16.25	189.30	190.00	0.00	0.00	0.00
1,500.00	12.26	85.09	1,479.66	18.07	210.46	211.23	0.00	0.00	0.00
1,600.00	12.26	85.09	1,577.38	19.89	231.62	232.47	0.00	0.00	0.00
1,700.00	12.26	85.09	1,675.10	21.71	252.78	253.71	0.00	0.00	0.00
1,800.00	12.26	85.09	1,772.82	23.52	273.94	274.94	0.00	0.00	0.00
1,900.00	12.26	85.09	1,870.54	25.34	295.10	296.18	0.00	0.00	0.00
2,000.00	12.26	85.09	1,968.26	27.16	316.25	317.42	0.00	0.00	0.00
2,100.00	12.26	85.09	2,065.98	28.97	337.41	338.66	0.00	0.00	0.00
2,200.00	12.26	85.09	2,163.69	30.79	358.57	359.89	0.00	0.00	0.00
2,300.00	12.26	85.09	2,261.41	32.61	379.73	381.13	0.00	0.00	0.00
2,400.00	12.26	85.09	2,359.13	34.42	400.89	402.37	0.00	0.00	0.00
2,500.00	12.26	85.09	2,456.85	36.24	422.05	423.60	0.00	0.00	0.00
2,600.00	12.26	85.09	2,554.57	38.06	443.21	444.84	0.00	0.00	0.00
2,700.00	12.26	85.09	2,652.29	39.87	464.37	466.08	0.00	0.00	0.00
2,800.00	12.26	85.09	2,750.01	41.69	485.53	487.31	0.00	0.00	0.00
2,900.00	12.26	85.09	2,847.73	43.51	506.69	508.55	0.00	0.00	0.00
3,000.00	12.26	85.09	2,945.45	45.33	527.85	529.79	0.00	0.00	0.00
3,100.00	12.26	85.09	3,043.16	47.14	549.01	551.03	0.00	0.00	0.00
3,200.00	12.26	85.09	3,140.88	48.96	570.16	572.26	0.00	0.00	0.00
3,300.00	12.26	85.09	3,238.60	50.78	591.32	593.50	0.00	0.00	0.00
3,400.00	12.26	85.09	3,336.32	52.59	612.48	614.74	0.00	0.00	0.00
3,500.00	12.26	85.09	3,434.04	54.41	633.64	635.97	0.00	0.00	0.00
3,600.00	12.26	85.09	3,531.76	56.23	654.80	657.21	0.00	0.00	0.00
3,700.00	12.26	85.09	3,629.48	58.04	675.96	678.45	0.00	0.00	0.00
3,800.00	12.26	85.09	3,727.20	59.86	697.12	699.69	0.00	0.00	0.00
3,900.00	12.26	85.09	3,824.92	61.68	718.28	720.92	0.00	0.00	0.00
4,000.00	12.26	85.09	3,922.63	63.49	739.44	742.16	0.00	0.00	0.00
4,100.00	12.26	85.09	4,020.35	65.31	760.60	763.40	0.00	0.00	0.00
4,200.00	12.26	85.09	4,118.07	67.13	781.76	784.63	0.00	0.00	0.00
4,300.00	12.26	85.09	4,215.79	68.95	802.92	805.87	0.00	0.00	0.00
4,400.00	12.26	85.09	4,313.51	70.76	824.08	827.11	0.00	0.00	0.00
4,500.00	12.26	85.09	4,411.23	72.58	845.23	848.34	0.00	0.00	0.00
4,600.00	12.26	85.09	4,508.95	74.40	866.39	869.58	0.00	0.00	0.00
4,700.00	12.26	85.09	4,606.67	76.21	887.55	890.82	0.00	0.00	0.00
4,800.00	12.26	85.09	4,704.39	78.03	908.71	912.06	0.00	0.00	0.00
4,900.00	12.26	85.09	4,802.11	79.85	929.87	933.29	0.00	0.00	0.00
5,000.00	12.26	85.09	4,899.82	81.66	951.03	954.53	0.00	0.00	0.00



<b>Database:</b>	Rockies Compass Server	<b>Local Co-ordinate Reference:</b>	Well FED 697-15-36A - Slot C
<b>Company:</b>	OXY USA RMAT	<b>TVD Reference:</b>	GL 8439' & RKB 30' @ 8469.00ft (H&P Rig)
<b>Project:</b>	Garfield County, CO NAD27	<b>MD Reference:</b>	GL 8439' & RKB 30' @ 8469.00ft (H&P Rig)
<b>Site:</b>	Cascade Creek 697-15B Pad	<b>North Reference:</b>	True
<b>Well:</b>	FED 697-15-36A	<b>Survey Calculation Method:</b>	Minimum Curvature
<b>Wellbore:</b>	OH		
<b>Design:</b>	Plan #1		

Planned Survey									
Measured Depth (ft)	Inclination (°)	Azimuth (°)	Vertical Depth (ft)	+N/-S (ft)	+E/-W (ft)	Vertical Section (ft)	Dogleg Rate (°/100ft)	Build Rate (°/100ft)	Turn Rate (°/100ft)
5,100.00	12.26	85.09	4,997.54	83.48	972.19	975.77	0.00	0.00	0.00
5,200.00	12.26	85.09	5,095.26	85.30	993.35	997.00	0.00	0.00	0.00
5,300.00	12.26	85.09	5,192.98	87.11	1,014.51	1,018.24	0.00	0.00	0.00
5,400.00	12.26	85.09	5,290.70	88.93	1,035.67	1,039.48	0.00	0.00	0.00
5,498.14	12.26	85.09	5,386.60	90.71	1,056.43	1,060.32	0.00	0.00	0.00
<b>Start Drop -2.00</b>									
5,500.00	12.22	85.09	5,388.42	90.75	1,056.83	1,060.71	2.00	-2.00	0.00
5,600.00	10.22	85.09	5,486.50	92.41	1,076.22	1,080.18	2.00	-2.00	0.00
5,700.00	8.22	85.09	5,585.20	93.78	1,092.19	1,096.21	2.00	-2.00	0.00
5,800.00	6.22	85.09	5,684.40	94.86	1,104.72	1,108.78	2.00	-2.00	0.00
5,900.00	4.22	85.09	5,783.98	95.64	1,113.79	1,117.89	2.00	-2.00	0.00
6,000.00	2.22	85.09	5,883.82	96.12	1,119.39	1,123.51	2.00	-2.00	0.00
6,100.00	0.22	85.09	5,983.79	96.30	1,121.52	1,125.65	2.00	-2.00	0.00
6,110.21	0.02	85.09	5,994.00	96.31	1,121.54	1,125.67	2.00	-2.00	0.00
<b>Mesaverde</b>									
6,111.21	0.00	0.00	5,995.00	96.31	1,121.54	1,125.67	2.00	-2.00	0.00
<b>Start 0.00° at 6111.21' MD</b>									
6,200.00	0.00	0.00	6,083.79	96.31	1,121.54	1,125.67	0.00	0.00	0.00
6,240.21	0.00	0.00	6,124.00	96.31	1,121.54	1,125.67	0.00	0.00	0.00
<b>Base Ohio Creek</b>									
6,300.00	0.00	0.00	6,183.79	96.31	1,121.54	1,125.67	0.00	0.00	0.00
6,400.00	0.00	0.00	6,283.79	96.31	1,121.54	1,125.67	0.00	0.00	0.00
6,500.00	0.00	0.00	6,383.79	96.31	1,121.54	1,125.67	0.00	0.00	0.00
6,600.00	0.00	0.00	6,483.79	96.31	1,121.54	1,125.67	0.00	0.00	0.00
6,700.00	0.00	0.00	6,583.79	96.31	1,121.54	1,125.67	0.00	0.00	0.00
6,800.00	0.00	0.00	6,683.79	96.31	1,121.54	1,125.67	0.00	0.00	0.00
6,900.00	0.00	0.00	6,783.79	96.31	1,121.54	1,125.67	0.00	0.00	0.00
7,000.00	0.00	0.00	6,883.79	96.31	1,121.54	1,125.67	0.00	0.00	0.00
7,100.00	0.00	0.00	6,983.79	96.31	1,121.54	1,125.67	0.00	0.00	0.00
7,160.21	0.00	0.00	7,044.00	96.31	1,121.54	1,125.67	0.00	0.00	0.00
<b>TOG = 626566.15, 1236486.69</b>									
7,200.00	0.00	0.00	7,083.79	96.31	1,121.54	1,125.67	0.00	0.00	0.00
7,300.00	0.00	0.00	7,183.79	96.31	1,121.54	1,125.67	0.00	0.00	0.00
7,400.00	0.00	0.00	7,283.79	96.31	1,121.54	1,125.67	0.00	0.00	0.00
7,500.00	0.00	0.00	7,383.79	96.31	1,121.54	1,125.67	0.00	0.00	0.00
7,600.00	0.00	0.00	7,483.79	96.31	1,121.54	1,125.67	0.00	0.00	0.00
7,700.00	0.00	0.00	7,583.79	96.31	1,121.54	1,125.67	0.00	0.00	0.00
7,800.00	0.00	0.00	7,683.79	96.31	1,121.54	1,125.67	0.00	0.00	0.00
7,900.00	0.00	0.00	7,783.79	96.31	1,121.54	1,125.67	0.00	0.00	0.00
8,000.00	0.00	0.00	7,883.79	96.31	1,121.54	1,125.67	0.00	0.00	0.00
8,100.00	0.00	0.00	7,983.79	96.31	1,121.54	1,125.67	0.00	0.00	0.00
8,200.00	0.00	0.00	8,083.79	96.31	1,121.54	1,125.67	0.00	0.00	0.00
8,243.21	0.00	0.00	8,127.00	96.31	1,121.54	1,125.67	0.00	0.00	0.00
<b>Target = 626566.15, 1236486.69</b>									
8,300.00	0.00	0.00	8,183.79	96.31	1,121.54	1,125.67	0.00	0.00	0.00
8,400.00	0.00	0.00	8,283.79	96.31	1,121.54	1,125.67	0.00	0.00	0.00
8,500.00	0.00	0.00	8,383.79	96.31	1,121.54	1,125.67	0.00	0.00	0.00
8,600.00	0.00	0.00	8,483.79	96.31	1,121.54	1,125.67	0.00	0.00	0.00
8,700.00	0.00	0.00	8,583.79	96.31	1,121.54	1,125.67	0.00	0.00	0.00
8,800.00	0.00	0.00	8,683.79	96.31	1,121.54	1,125.67	0.00	0.00	0.00
8,900.00	0.00	0.00	8,783.79	96.31	1,121.54	1,125.67	0.00	0.00	0.00
8,910.21	0.00	0.00	8,794.00	96.31	1,121.54	1,125.67	0.00	0.00	0.00
<b>Rollins</b>									



<b>Database:</b>	Rockies Compass Server	<b>Local Co-ordinate Reference:</b>	Well FED 697-15-36A - Slot C
<b>Company:</b>	OXY USA RMAT	<b>TVD Reference:</b>	GL 8439' & RKB 30' @ 8469.00ft (H&P Rig)
<b>Project:</b>	Garfield County, CO NAD27	<b>MD Reference:</b>	GL 8439' & RKB 30' @ 8469.00ft (H&P Rig)
<b>Site:</b>	Cascade Creek 697-15B Pad	<b>North Reference:</b>	True
<b>Well:</b>	FED 697-15-36A	<b>Survey Calculation Method:</b>	Minimum Curvature
<b>Wellbore:</b>	OH		
<b>Design:</b>	Plan #1		

Planned Survey									
Measured Depth (ft)	Inclination (°)	Azimuth (°)	Vertical Depth (ft)	+N/-S (ft)	+E/-W (ft)	Vertical Section (ft)	Dogleg Rate (°/100ft)	Build Rate (°/100ft)	Turn Rate (°/100ft)
9,000.00	0.00	0.00	8,883.79	96.31	1,121.54	1,125.67	0.00	0.00	0.00
9,100.00	0.00	0.00	8,983.79	96.31	1,121.54	1,125.67	0.00	0.00	0.00
9,200.00	0.00	0.00	9,083.79	96.31	1,121.54	1,125.67	0.00	0.00	0.00
9,300.00	0.00	0.00	9,183.79	96.31	1,121.54	1,125.67	0.00	0.00	0.00
9,310.00	0.00	0.00	9,193.79	96.31	1,121.54	1,125.67	0.00	0.00	0.00
<b>PBHL = 626566.15, 1236486.69</b>									
9,310.21	0.00	0.00	9,194.00	96.31	1,121.54	1,125.67	0.00	0.00	0.00

Design Targets									
Target Name - hit/miss target - Shape	Dip Angle (°)	Dip Dir. (°)	TVD (ft)	+N/-S (ft)	+E/-W (ft)	Northing (usft)	Easting (usft)	Latitude	Longitude
FED 697-15-36A Target - plan hits target center - Circle (radius 50.00)	0.00	0.00	8,127.00	96.31	1,121.54	626,566.15	1,236,486.69	39° 31' 21.034 N	108° 12' 24.913 W

Formations					
Measured Depth (ft)	Vertical Depth (ft)	Name	Lithology	Dip (°)	Dip Direction (°)
6,110.21	5,994.00	Mesaverde		0.00	
6,240.21	6,124.00	Base Ohio Creek		0.00	
8,910.21	8,794.00	Rollins		0.00	

Plan Annotations				
Measured Depth (ft)	Vertical Depth (ft)	Local Coordinates		Comment
		+N/-S (ft)	+E/-W (ft)	
200.00	200.00	0.00	0.00	Start Build 2.00
813.07	808.40	5.59	65.11	Start 12.26° at 813.07' MD
5,498.14	5,386.60	90.71	1,056.43	Start Drop -2.00
6,111.21	5,995.00	96.31	1,121.54	Start 0.00° at 6111.21' MD
7,160.21	7,044.00	96.31	1,121.54	TOG = 626566.15, 1236486.69
8,243.21	8,127.00	96.31	1,121.54	Target = 626566.15, 1236486.69
9,310.00	9,193.79	96.31	1,121.54	PBHL = 626566.15, 1236486.69