
BILL BARRETT CORPORATION E-BILL

**FEDERAL 44A-33-691
MAMM CREEK
Garfield County , Colorado**

Cement Surface Casing
15-Dec-2011

Post Job Summary

The Road to Excellence Starts with Safety

Sold To #: 343492	Ship To #: 2896408	Quote #:	Sales Order #: 9132769
Customer: BILL BARRETT CORPORATION E-BILL	Customer Rep: Lauer, Casey		
Well Name: FEDERAL	Well #: 44A-33-691	API/UWI #: 05-045-20858	
Field: MAMM CREEK	City (SAP): SILT	County/Parish: Garfield	State: Colorado
Lat: N 39.479 deg. OR N 39 deg. 28 min. 45.109 secs.	Long: W 107.553 deg. OR W -108 deg. 26 min. 47.692 secs.		
Contractor: PROPETRO	Rig/Platform Name/Num: PROPETRO		
Job Purpose: Cement Surface Casing			
Well Type: Development Well	Job Type: Cement Surface Casing		
Sales Person: FLING, MATTHEW	Srvc Supervisor: SLAUGHTER, JESSE	MBU ID Emp #: 454315	

Job Personnel

HES Emp Name	Exp Hrs	Emp #	HES Emp Name	Exp Hrs	Emp #	HES Emp Name	Exp Hrs	Emp #
BRENNECKE, ANDREW Bailey	2	486345	REEVES, BRANDON W	2	287883	SLAUGHTER, JESSE Dean	2	454315
SPARKS, CLIFFORD Paul	0	502476						

Equipment

HES Unit #	Distance-1 way	HES Unit #	Distance-1 way	HES Unit #	Distance-1 way	HES Unit #	Distance-1 way
10551730C	120 mile	10867531	120 mile	10973571	120 mile	10989685	120 mile
11583931	120 mile						

Job Hours

Date	On Location Hours	Operating Hours	Date	On Location Hours	Operating Hours	Date	On Location Hours	Operating Hours
12-15-2011	2	2						

TOTAL	Total is the sum of each column separately							
-------	--	--	--	--	--	--	--	--

Job

Formation Name	Top	Bottom	Called Out	Date	Time	Time Zone
Formation Depth (MD)			On Location	15 - Dec - 2011	11:00	MST
Form Type	BHST		Job Started	15 - Dec - 2011	12:16	MST
Job depth MD	869.7 ft	Job Depth TVD	Job Completed	15 - Dec - 2011	12:57	MST
Water Depth		Wk Ht Above Floor	Departed Loc			
Perforation Depth (MD)	From	To				

Well Data

Description	New / Used	Max pressure psig	Size in	ID in	Weight lbm/ft	Thread	Grade	Top MD ft	Bottom MD ft	Top TVD ft	Bottom TVD ft
-------------	------------	-------------------	---------	-------	---------------	--------	-------	-----------	--------------	------------	---------------

Sales/Rental/3rd Party (HES)

Description	Qty	Qty uom	Depth	Supplier
R/A DENSOMETER W/CHART RECORDER,/JOB,ZI	1	JOB		
ADC (AUTO DENSITY CTRL) SYS, /JOB,ZI	1	JOB		
PORT. DATA ACQUIS. W/OPTICEM RT W/HES	1	EA		
PLUG,CMTG,TOP,9 5/8,HWE,8.16 MIN/9.06 MA	1	EA		

Tools and Accessories

Type	Size	Qty	Make	Depth	Type	Size	Qty	Make	Depth	Type	Size	Qty	Make
Guide Shoe					Packer					Top Plug	9.625	1	HES
Float Shoe					Bridge Plug					Bottom Plug			
Float Collar					Retainer					SSR plug set			
Insert Float										Plug Container	9.625	1	HES
Stage Tool										Centralizers			

Miscellaneous Materials

Gelling Agt	Conc	Surfactant	Conc	Acid Type	Qty	Conc	%
Treatment Fld	Conc	Inhibitor	Conc	Sand Type	Size	Qty	

Fluid Data

Stage/Plug #: 1

Fluid #	Stage Type	Fluid Name	Qty	Qty uom	Mixing Density lbm/gal	Yield ft ³ /sk	Mix Fluid Gal/sk	Rate bbl/min	Total Mix Fluid Gal/sk
1	WATER SPACER	FRESH WATER	20.00	bbl	8.34	.0	.0	4	
2	Lead Cement	VERSACEM (TM) SYSTEM (452010)	125.0	sacks	12.3	2.38	13.77	6	13.77
	0.25 lbm	POLY-E-FLAKE (101216940)							
	13.77 Gal	FRESH WATER							
3	Tail Cement	SWIFTCES (TM) SYSTEM (452990)	125.0	sacks	14.2	1.43	6.85	6	6.85
	0.25 lbm	POLY-E-FLAKE (101216940)							
	6.85 Gal	FRESH WATER							
4	DISPLACEMENT	FRESH WATER	63.9	bbl	8.4			6	
Calculated Values		Pressures		Volumes					
Displacement	63.9	Shut In: Instant		Lost Returns	NO	Cement Slurry	84.8	Pad	
Top Of Cement	SURFACE	5 Min		Cement Returns	15	Actual Displacement	63.9	Treatment	
Frac Gradient		15 Min		Spacers	20	Load and Breakdown		Total Job	170
Rates									
Circulating		Mixing	6	Displacement	6	Avg. Job			6
Cement Left In Pipe	Amount	0 ft	Reason	Shoe Joint					
Frac Ring # 1 @	ID		Frac ring # 2 @	ID		Frac Ring # 3 @	ID		Frac Ring # 4 @
The Information Stated Herein Is Correct				Customer Representative Signature					

The Road to Excellence Starts with Safety

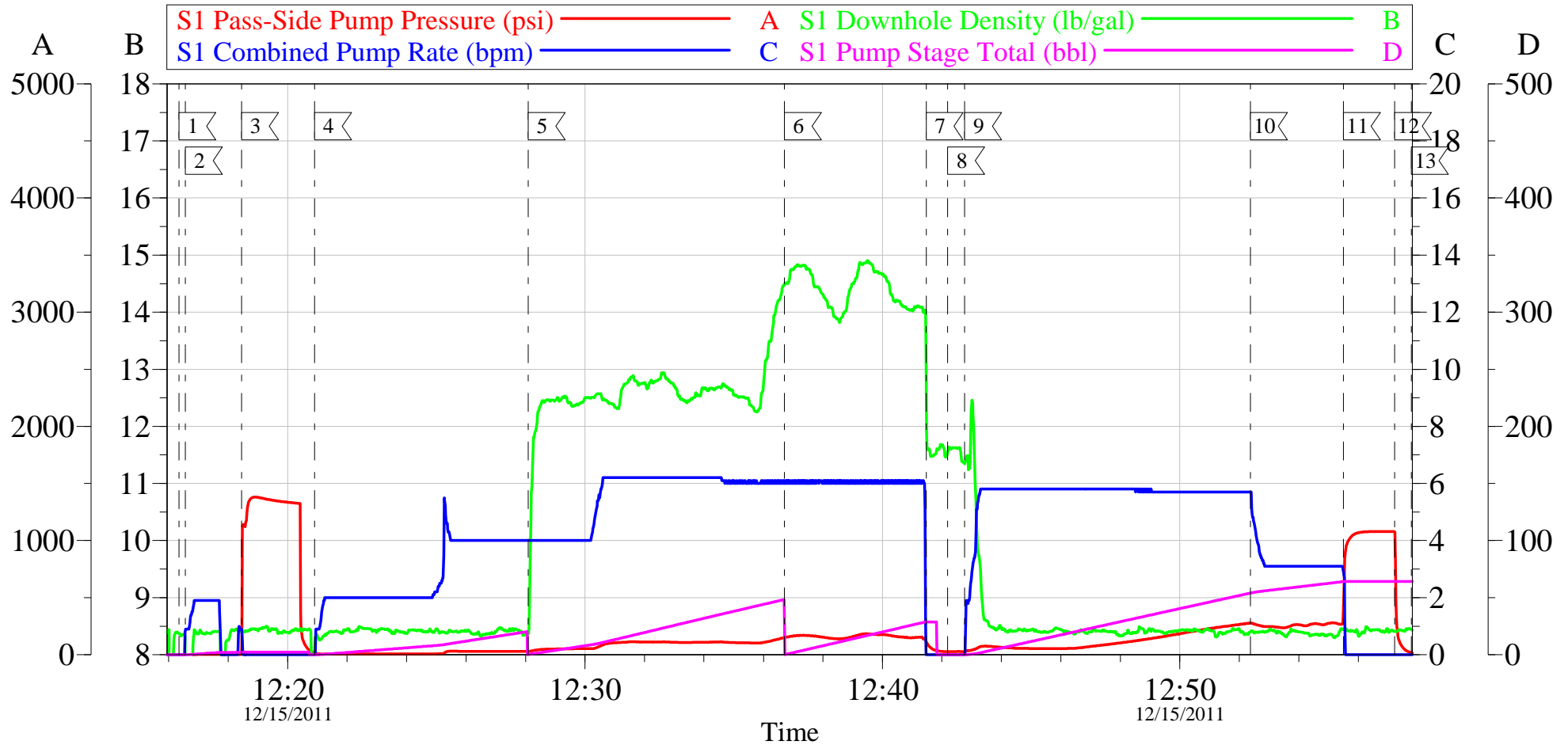
Sold To #: 343492	Ship To #: 2896408	Quote #:	Sales Order #: 9132769
Customer: BILL BARRETT CORPORATION E-BILL		Customer Rep: Lauer, Casey	
Well Name: FEDERAL	Well #: 44A-33-691	API/UWI #: 05-045-20858	
Field: MAMM CREEK	City (SAP): SILT	County/Parish: Garfield	State: Colorado
Legal Description:			
Lat: N 39.479 deg. OR N 39 deg. 28 min. 45.109 secs.		Long: W 107.553 deg. OR W -108 deg. 26 min. 47.692 secs.	
Contractor: PROPETRO		Rig/Platform Name/Num: PROPETRO	
Job Purpose: Cement Surface Casing			Ticket Amount:
Well Type: Development Well		Job Type: Cement Surface Casing	
Sales Person: FLING, MATTHEW		Srvc Supervisor: SLAUGHTER, JESSE	MBU ID Emp #: 454315

Activity Description	Date/Time	Cht #	Rate bbl/min	Volume bbl		Pressure psig		Comments
				Stage	Total	Tubing	Casing	
Call Out	12/15/2011 11:00							TD 890 FT, TP 869.72 FT, SHOE 43.36 FT, CSG 9 5/8 IN 36 LB/FT, HOLE 12 3/8 IN
Arrive At Loc	12/15/2011 11:10							CREW STAYED ON LOCATION FROM PREVIOUS JOB
Assessment Of Location Safety Meeting	12/15/2011 11:20							WITH ALL HES PERSONNEL
Other	12/15/2011 11:30							SPOT EQUIPMENT
Pre-Rig Up Safety Meeting	12/15/2011 11:40							WITH ALL HES PERSONNEL
Rig-Up Equipment	12/15/2011 11:50							
Pre-Job Safety Meeting	12/15/2011 12:05							WITH ALL PERSONNEL ON LOCATION
Start Job	12/15/2011 12:16							
Other	12/15/2011 12:16		2	2			3.0	FILL LINES WITH FRESH WATER
Test Lines	12/15/2011 12:18							TESTED LINES TO 1381 PSI PRESSURE HOLDING
Pump Spacer 1	12/15/2011 12:20		4	20			31.0	FRESH WATER
Pump Lead Cement	12/15/2011 12:28		6	53			150.0	125 SKS AT 12.3 PPG, 2.38 FT3/SK, 13.77 GAL/SK
Pump Tail Cement	12/15/2011 12:36		6	31.8			140.0	125 SKS AT 14.2 PPG, 1.43 FT3/SK, 6.85 GAL/SK
Shutdown	12/15/2011 12:41							
Drop Top Plug	12/15/2011 12:42							PLUG LAUNCHED

Activity Description	Date/Time	Cht #	Rate bbl/min	Volume bbl		Pressure psig		Comments
				Stage	Total	Tubing	Casing	
Pump Displacement	12/15/2011 12:42		6	53.9			277.0	FRESH WATER
Slow Rate	12/15/2011 12:52		3	10			270.0	SLOW RATE 10 BBLS PRIOR TO CALCULATED DISPLACEMENT
Bump Plug	12/15/2011 12:55		3		63.9		1070.0	PLUG BUMPED
Check Floats	12/15/2011 12:57							FLOATS HOLDING. HES RETURNED 1 BBL H2O TO PUMP
End Job	12/15/2011 12:57							PIPE WAS STATIC THROUGHOUT JOB, GOOD CIRCULATION DURING JOB, HES RETURNED 15 BBL CEMENT TO SURFACE
Pre-Rig Down Safety Meeting	12/15/2011 13:00							WITH ALL HES PERSONNEL
Rig-Down Equipment	12/15/2011 13:05							
Crew Leave Location	12/15/2011 13:15							HES CREW WILL STAY ON LOCATION FOR THE NEXT JOB
Comment	12/15/2011 13:16							THANK YOU FOR USING HALLIBURTON CEMENT DEPARTMENT. JESSE SLAUGHTER AND CREW.

BILL BARRETT FEDERAL 44A-33-691

9 5/8 SURFACE



Local Event Log

1 START JOB	12:16:21	2 PRIME LINES	12:16:34	3 TEST LINES	12:18:27
4 PUMP H2O SPACER	12:20:54	5 PUMP LEAD CEMENT	12:28:05	6 PUMPTAIL CEMENT	12:36:42
7 SHUTDOWN	12:41:28	8 DROP TOP PLUG	12:42:12	9 PUMP DISPLACEMENT	12:42:46
10 SLOW RATE	12:52:23	11 BUMP PLUG	12:55:30	12 CHECK FLOATS	12:57:13
13 END JOB	12:57:47				

Customer: BILL BARRETT
Well Description: FEDERAL 44A-33-691
Customer Rep: CASEY LAUER

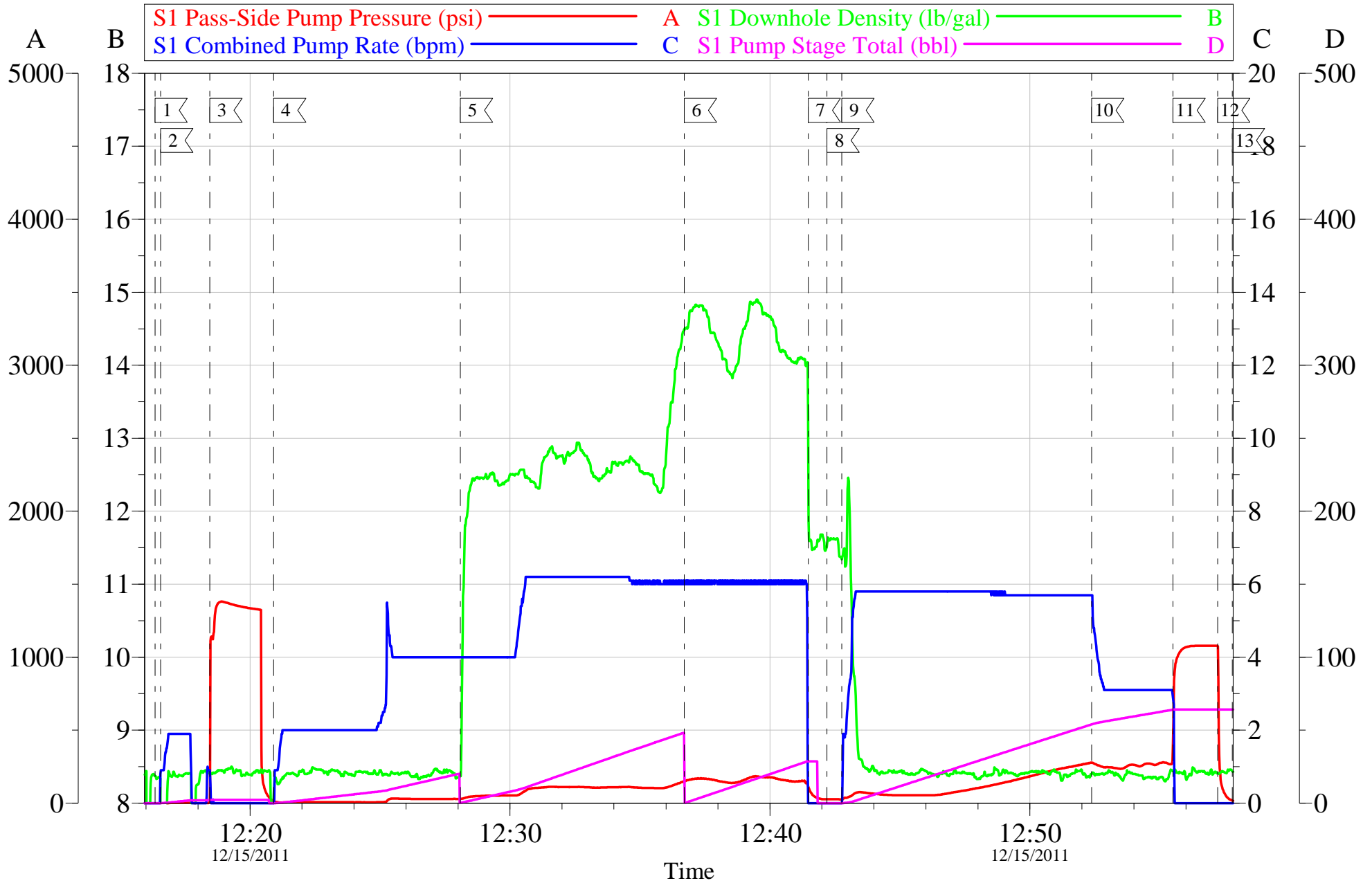
Job Date: 15-Dec-2011
Job Type: SURFACE
Cement Supervisor: JESSE SLAUGHTER

Sales Order #: 9132769
ADC Used: YES
Elite #2: ANDREW BRENNECKE

OptiCem v6.4.10
15-Dec-11 13:10

BILL BARRETT FEDERAL 44A-33-691

9 5/8 SURFACE



Customer: BILL BARRETT
Well Description: FEDERAL 44A-33-691
Customer Rep: CASEY LAUER

Job Date: 15-Dec-2011
Job Type: SURFACE
Cement Supervisor: JESSE SLAUGHTER

Sales Order #: 9132769
ADC Used: YES
Elite #2: ANDREW BRENNECKE

OptiCem v6.4.10
15-Dec-11 13:10

HALLIBURTON

Water Analysis Report

Company: BILL BARRETT

Submitted by: JESSE SLAUGHTER

Attention: LAB

Lease FEDERAL

Well # 44A-33-691

Date: 12/15/2011

Date Rec.:

S.O.# 9132769

Job Type: SURFACE

Specific Gravity	<i>MAX</i>	1
pH	<i>8</i>	6
Potassium (K)	<i>5000</i>	250 Mg / L
Calcium (Ca)	<i>500</i>	120 Mg / L
Iron (FE2)	<i>300</i>	0 Mg / L
Chlorides (Cl)	<i>3000</i>	0 Mg / L
Sulfates (SO ₄)	<i>1500</i>	UNDER 200 Mg / L
Chlorine (Cl ₂)		0 Mg / L
Temp	<i>40-80</i>	40 Deg
Total Dissolved Solids		200 Mg / L

Respectfully: JESSE SLAUGHTER

Title: CEMENTING SUPERVISOR

Location: Grand Junction, CO

NOTICE:

This report is limited to the described sample tested. Any person using or relying on this report agrees that Halliburton shall not be liable for any loss or damage whether due to act or omission resulting from such report or its use.

Sales Order #: 9132769	Line Item: 10	Survey Conducted Date: 12/15/2011
Customer: BILL BARRETT CORPORATION E-BILL		Job Type (BOM): CMT SURFACE CASING BOM
Customer Representative: CASEY LAUER		API / UWI: (leave blank if unknown) 05-045-20858
Well Name: FEDERAL		Well Number: 44A-33-691
Well Type: Development Well	Well Country: United States of America	
H2S Present:	Well State: Colorado	Well County: Garfield

Dear Customer,

We hope that you were satisfied with the service quality of this job performed by Halliburton. It is the aim of our management and service personnel to deliver equipment and service of a standard unmatched in the service sector of the energy industry.

Please take the time to let us know if our performance met with your satisfaction. Please be as critical as possible to ensure we constantly improve our service. Your comments are of great value to us and are intended for the exclusive use of Halliburton.

CUSTOMER SATISFACTION SURVEY

CATEGORY	CUSTOMER SATISFACTION RESPONSE	
Survey Conducted Date	The date the survey was conducted	12/15/2011
Survey Interviewer	The survey interviewer is the person who initiated the survey.	JESSE SLAUGHTER (HB21762)
Customer Participation	Did the customer participate in this survey? (Y/N)	Yes
Customer Representative	Enter the Customer representative name	CASEY LAUER
HSE	Was our HSE performance satisfactory? Circle Y or N	Yes
Equipment	Were you satisfied with our Equipment? Circle Y or N	Yes
Personnel	Were you satisfied with our people? Circle Y or N	Yes
Customer Comment	Customer's Comment	

CUSTOMER SIGNATURE

Sales Order #: 9132769	Line Item: 10	Survey Conducted Date: 12/15/2011
Customer: BILL BARRETT CORPORATION E-BILL		Job Type (BOM): CMT SURFACE CASING BOM
Customer Representative: CASEY LAUER		API / UWI: (leave blank if unknown) 05-045-20858
Well Name: FEDERAL		Well Number: 44A-33-691
Well Type: Development Well	Well Country: United States of America	
H2S Present:	Well State: Colorado	Well County: Garfield

KEY PERFORMANCE INDICATORS

General	
Survey Conducted Date	12/15/2011
The date the survey was conducted	

Cementing KPI Survey	
Type of Job	0
Select the type of job. (Cementing or Non-Cementing)	
Select the Maximum Deviation range for this Job	Vertical
What is the highest deviation for the job you just completed? This may not be the maximum well deviation.	
Total Operating Time (hours)	2
Total Operating Hours Including Rig-up, Pumping, Rig-down. Enter in decimal format.	
HSE Incident, Accident, Injury	No
HSE Incident, Accident, Injury. This should be recordable incidents only.	
Was the job purpose achieved?	Yes
Was the job delivered correctly as per customer agreed design?	
Operating Hours (Pumping Hours)	2
Total number of hours pumping fluid on this job. Enter in decimal format.	
Customer Non-Productive Rig Time (hrs)	0
Lost time due to Halliburton in the start, execution, or completion of an ordered service or product, or delays in a follow-on service. Enter in decimal format. 0 if none.	
Type of Rig Classification Job Was Performed	Drilling Rig (Portable)
Type Of Rig (classification) Job Was Performed On	
Number Of JSAs Performed	6
Number Of Jsas Performed	
Number of Unplanned Shutdowns	0
Unplanned shutdown is when injection stops for any period of time.	
Was this a Primary Cement Job (Yes / No)	Yes

Sales Order #: 9132769	Line Item: 10	Survey Conducted Date: 12/15/2011
Customer: BILL BARRETT CORPORATION E-BILL		Job Type (BOM): CMT SURFACE CASING BOM
Customer Representative: CASEY LAUER		API / UWI: (leave blank if unknown) 05-045-20858
Well Name: FEDERAL		Well Number: 44A-33-691
Well Type: Development Well	Well Country: United States of America	
H2S Present:	Well State: Colorado	Well County: Garfield

Primary Cement Job= Casing job, Liner job, or Tie-back job.	
Did We Run Wiper Plugs? Did We Run Top And Bottom Casing Wiper Plugs?	Top
Mixing Density of Job Stayed in Designed Density Range (0-100%) Density Range defined as +/- .20 ppg. Calculation: Total BBLs cement mixed at designed density divided by total BBLs of cement multiplied by 100	90
Was Automated Density Control Used? Was Automated Density Control (ADC) Used ?	No
Pump Rate (percent) of Job Stayed At Designed Pump Rate Pump Rate range defined as +/- 1bbl/min. Calculation: Total BBLs of fluid pumped at the designed rate divided by Total BBLs of fluid pumped, multiplied by 100	95
Nbr of Remedial Sqz Jobs Rqd - Competition Number Of Remedial Squeeze Jobs Required After Primary Job Performed By Competition	0
Nbr of Remedial Plug Jobs Rqd - HES Number Of Remedial Plug Jobs Needed After Primary Plug Pumped By HES	0
Nbr of Remedial Sqz Jobs Rqd - HES Number Of Remedial Squeeze Jobs Required After Primary Job Performed By HES	0