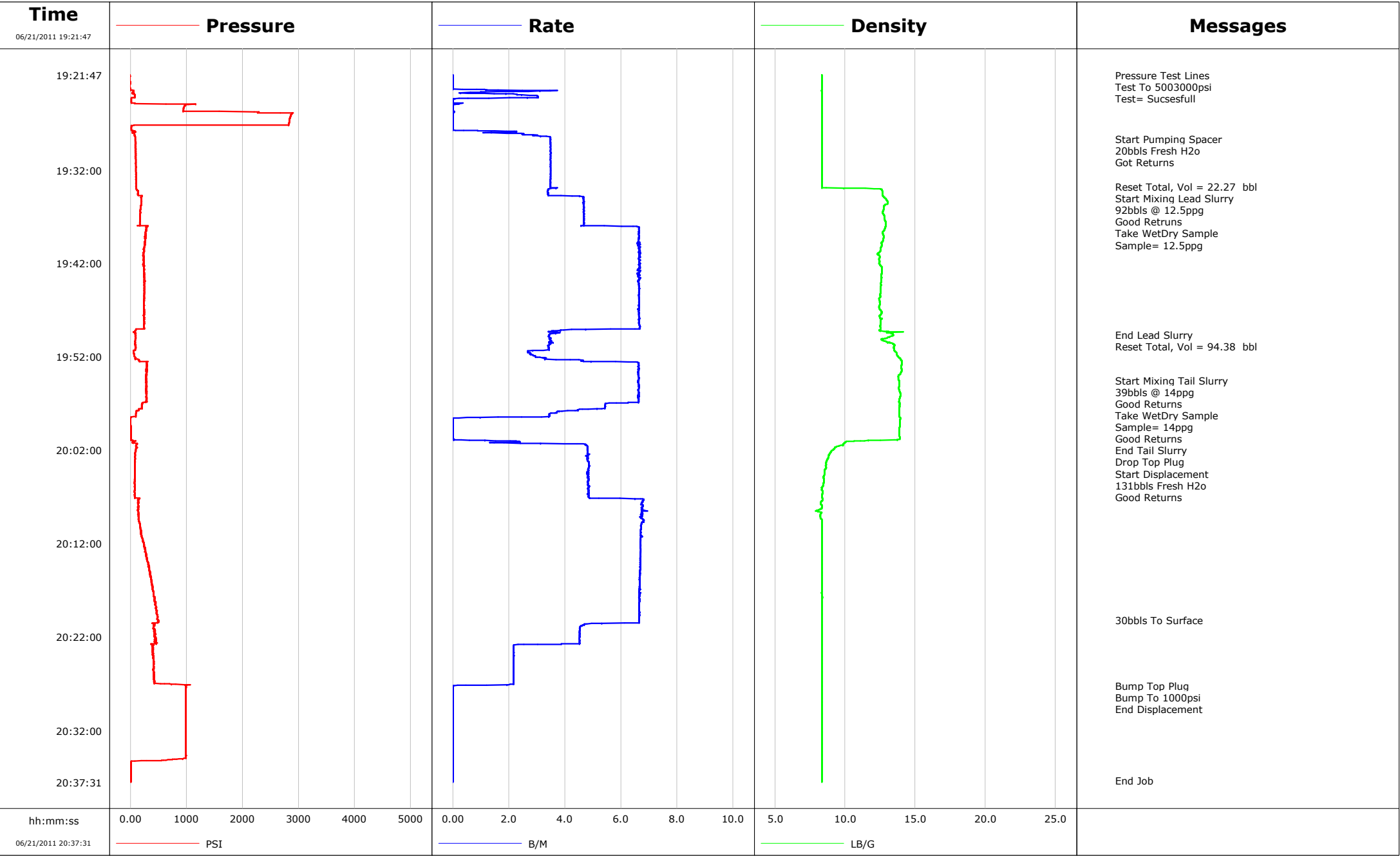


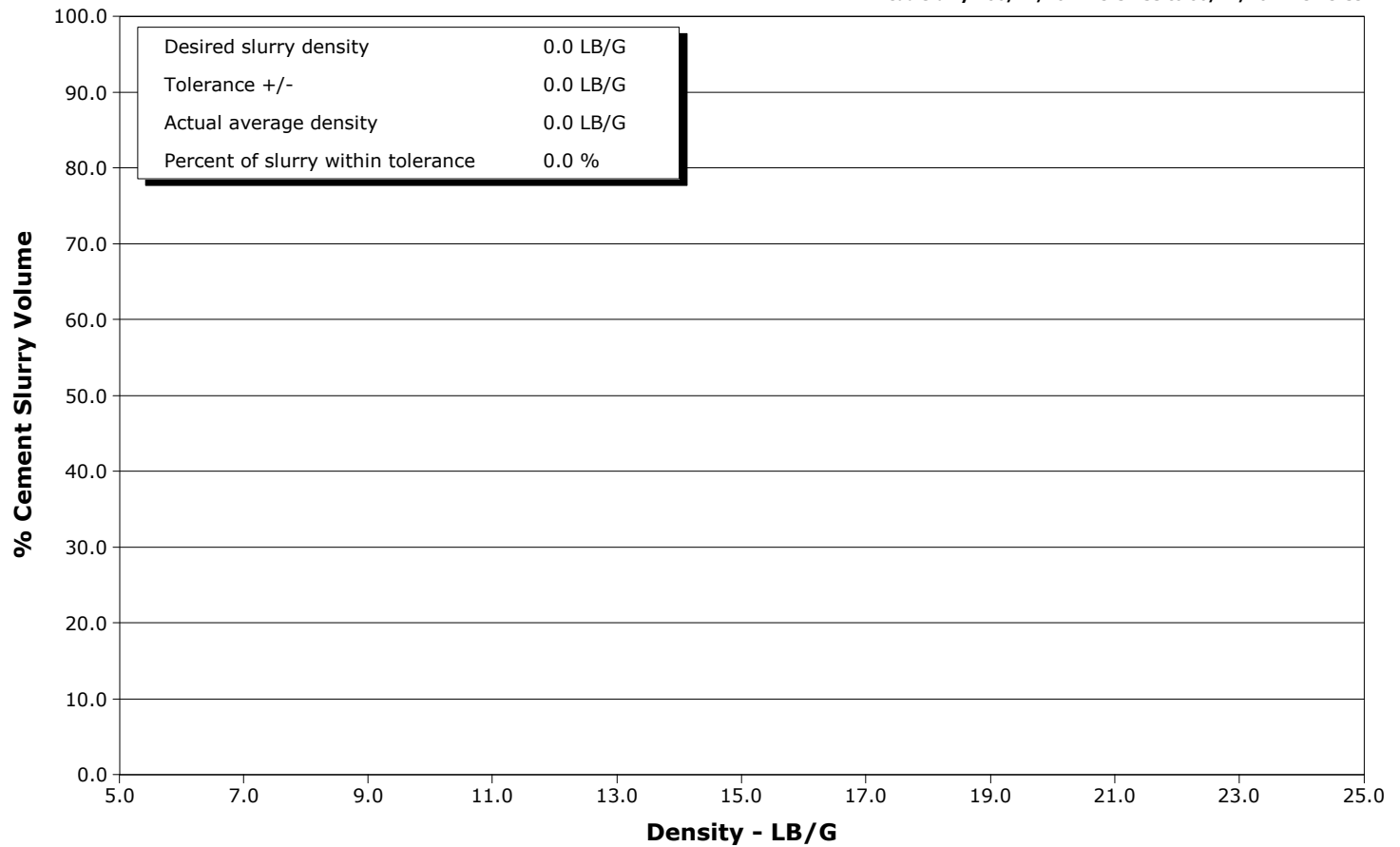
| | | | |
|-----------------|---------------|-----------------|------------|
| Well | WF05C-26 | Client | ENCANA |
| Field | N PARACHUTE | SIR No. | BRWT-00079 |
| Engineer | JASON CRICK | Job Type | SURFACE |
| Country | United States | Job Date | 06-21-2011 |



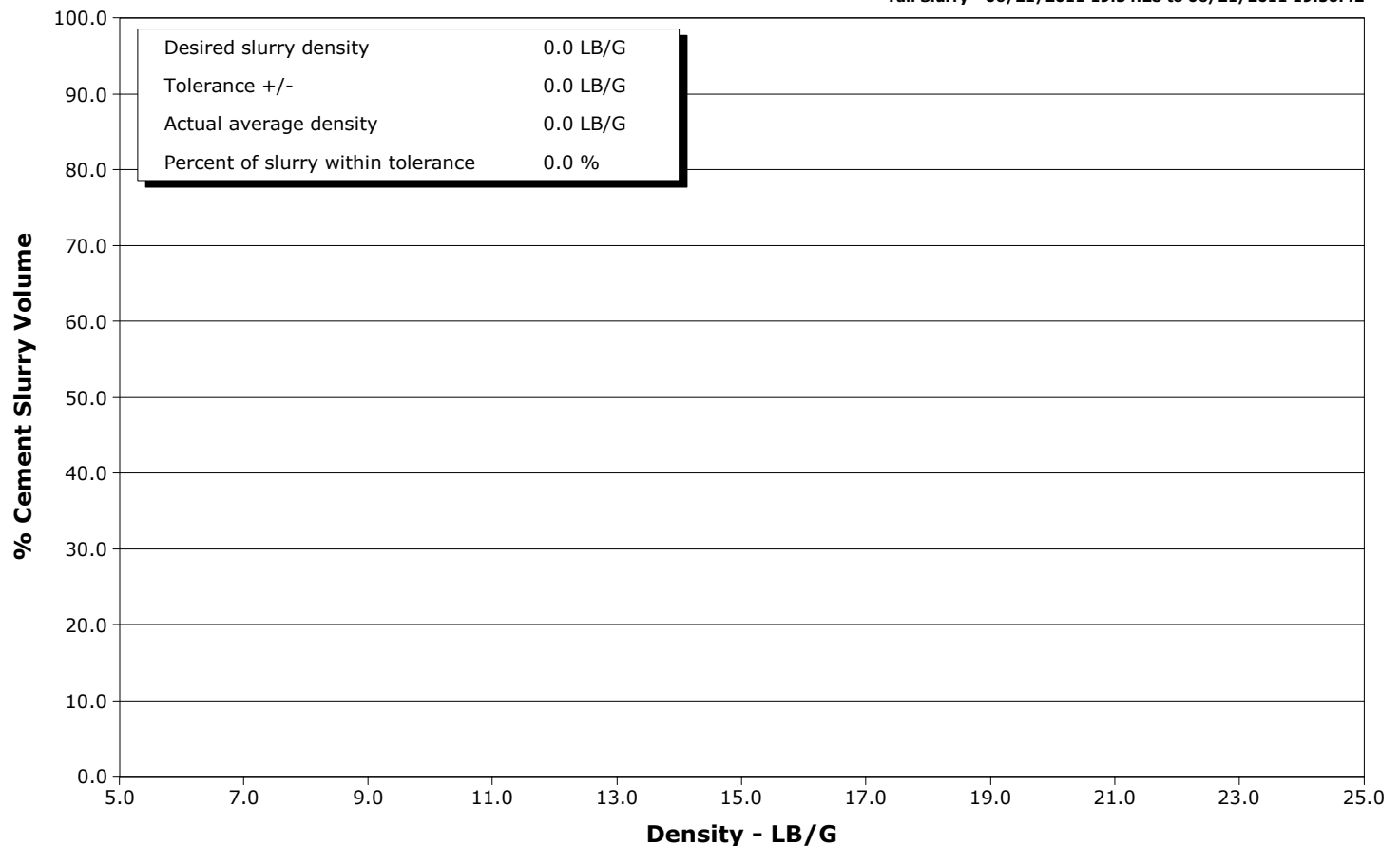
Well WF05C-26
Field N PARACHUTE
Engineer JASON CRICK
Country United States

Client ENCANA
SIR No. BRWT-00079
Job Type SURFACE
Job Date 06-21-2011

Lead Slurry - 06/21/2011 19:34:33 to 06/21/2011 19:49:39



Tail Slurry - 06/21/2011 19:54:28 to 06/21/2011 19:56:42



| | | | | Customer ENCANA | | | | Job Number BRWT-00079 | | | | | | | | | | |
|--|------------------------|-----------------------------|---|---------------------------------|-------------------------|-------------------------------------|-------------------|--------------------------|---------------------------|----------------------|---------------------------|--------------------------------|--------------------------|--------|----------------------------|--|----------------------|--|
| Well WF05C-26 | | | | Location (legal) N PARACHUTE | | | | Schlumberger Location | | | | Job Start Jun/21/2011 | | | | | | |
| Field N PARACHUTE | | | Formation Name/Type | | | Deviation deg | | Bit Size in | | Well MD ft | | Well TVD ft | | | | | | |
| County GARFILED | | | State/Province CO | | | BHP psi | | BHST degF | | BHCT degF | | Pore Press. Gradient lb/gal | | | | | | |
| Well Master 0631280609 | | | API/UWI | | | | | | | | | | | | | | | |
| Rig Name PATTERSON 303 | | Drilled For Gas | | Service Via Land | | Casing/Liner | | | | | | | | | | | | |
| | | | | | | Depth, ft | | Size, in | | Weight, lb/ft | | Grade | | Thread | | | | |
| Offshore Zone | | Well Class New | | Well Type | | | | | | | | | | | | | | |
| | | | | | | | | | | | | | | | | | | |
| Drilling Fluid Type | | | Max. Density lb/gal | | Plastic Viscosity cP | | Tubing/Drill Pipe | | | | | | | | | | | |
| | | | | | | | T/D | | Depth, ft | | Size, in | | Weight, lb/ft | | Grade | | Thread | |
| Service Line Cementing | | | Job Type SURFACE | | | | | | | | | | | | | | | |
| | | | | | | | | | | | | | | | | | | |
| Max. Allowed Tub. Press psi | | | Max. Allowed Ann. Press psi | | | WH Connection Single Cement head | | | Perforations/Open Hole | | | | | | | | | |
| | | | | | | | | | Top, ft | | Bottom, ft | | shot/ft | | No. of Shots | | Total Interval ft | |
| | | | | | | | | | ft | | ft | | | | | | Diameter in | |
| | | | | | | | | | ft | | ft | | | | | | | |
| | | | | | | | | | Treat Down Casing | | Displacement 131.0 bbl | | Packer Type | | Packer Depth ft | | | |
| | | | | | | | | | Tubing Vol. bbl | | Casing Vol. 134.0 bbl | | Annular Vol. 97.0 bbl | | Openhole Vol. 231.0 bbl | | | |
| Casing/Tubing Secured <input type="checkbox"/> | | | 1 Hole Vol. Circulated prior to Cement <input type="checkbox"/> | | | Casing Tools | | | | Squeeze Job | | | | | | | | |
| Lift Pressure 859 psi | | | | | | Shoe Type Guide | | | | Squeeze Type | | | | | | | | |
| Pipe Rotated <input type="checkbox"/> | | | Pipe Reciprocated <input type="checkbox"/> | | | Shoe Depth 1737.0 ft | | | | Tool Type | | | | | | | | |
| No. Centralizers | | | Top Plugs 1 | | Bottom Plugs | | Stage Tool Type | | | | Tool Depth ft | | | | | | | |
| Cement Head Type Single | | | | | | Stage Tool Depth ft | | | | Tail Pipe Size in | | | | | | | | |
| Job Scheduled For Jun/21/2011 | | | Arrived on Location Jun/21/2011 | | | Leave Location Jun/21/2011 | | | Collar Type Diff-Fill | | | | Tail Pipe Depth ft | | | | | |
| | | | | | | | | | Collar Depth 1692.0 ft | | | | Sqz. Total Vol. bbl | | | | | |
| Date | Time 24-hr clock | Treating Pressure PSI | Flow Rate B/M | Density LB/G | Volume BBL | Message | | | | | | | | | | | | |
| 06/21/2011 | 19:21:47 | -0 | 0.0 | 8.35 | 0.0 | Started Acquisition | | | | | | | | | | | | |
| 06/21/2011 | 19:21:48 | -0 | 0.0 | 8.35 | 0.0 | Pressure Test Lines | | | | | | | | | | | | |
| 06/21/2011 | 19:21:50 | -1 | 0.0 | 8.35 | 0.0 | Test To 5003000psi | | | | | | | | | | | | |
| 06/21/2011 | 19:22:17 | -1 | 0.0 | 8.35 | 0.0 | | | | | | | | | | | | | |
| 06/21/2011 | 19:22:47 | -0 | 0.0 | 8.35 | 0.0 | | | | | | | | | | | | | |
| 06/21/2011 | 19:23:17 | -0 | 0.0 | 8.35 | 0.0 | | | | | | | | | | | | | |
| 06/21/2011 | 19:23:47 | 43 | 1.0 | 8.35 | 0.7 | | | | | | | | | | | | | |
| 06/21/2011 | 19:24:17 | 23 | 2.0 | 8.35 | 2.0 | | | | | | | | | | | | | |
| 06/21/2011 | 19:24:47 | 20 | 0.0 | 8.36 | 2.0 | | | | | | | | | | | | | |
| 06/21/2011 | 19:25:17 | 955 | 0.0 | 8.36 | 2.1 | | | | | | | | | | | | | |
| 06/21/2011 | 19:25:47 | 2292 | 0.0 | 8.36 | 2.1 | | | | | | | | | | | | | |
| 06/21/2011 | 19:26:17 | 2854 | 0.0 | 8.36 | 2.1 | | | | | | | | | | | | | |
| 06/21/2011 | 19:26:47 | 2835 | 0.0 | 8.36 | 2.1 | | | | | | | | | | | | | |
| 06/21/2011 | 19:27:17 | 22 | 0.0 | 8.36 | 2.1 | | | | | | | | | | | | | |
| 06/21/2011 | 19:27:47 | 30 | 0.9 | 8.36 | 2.1 | | | | | | | | | | | | | |
| 06/21/2011 | 19:28:17 | 76 | 2.9 | 8.36 | 3.2 | | | | | | | | | | | | | |
| 06/21/2011 | 19:28:38 | 92 | 3.5 | 8.36 | 4.3 | Start Pumping Spacer | | | | | | | | | | | | |
| 06/21/2011 | 19:28:39 | 94 | 3.5 | 8.36 | 4.4 | 20bbls Fresh H2o | | | | | | | | | | | | |
| 06/21/2011 | 19:28:47 | 94 | 3.5 | 8.36 | 4.8 | | | | | | | | | | | | | |
| 06/21/2011 | 19:29:17 | 93 | 3.5 | 8.36 | 6.6 | | | | | | | | | | | | | |
| 06/21/2011 | 19:29:47 | 99 | 3.5 | 8.36 | 8.3 | | | | | | | | | | | | | |

| Well | | | Field | | Job Start | | Customer | | Job Number | |
|------------|------------------------|-----------------------------|---------------------|-----------------|---------------|------------------------------|----------|--|------------|--|
| WF05C-26 | | | N PARACHUTE | | Jun/21/2011 | | ENCANA | | BRWT-00079 | |
| Date | Time 24-hr clock | Treating Pressure PSI | Flow Rate B/M | Density LB/G | Volume BBL | Message | | | | |
| 06/21/2011 | 19:30:47 | 98 | 3.5 | 8.36 | 11.8 | | | | | |
| 06/21/2011 | 19:31:17 | 100 | 3.5 | 8.36 | 13.6 | | | | | |
| 06/21/2011 | 19:31:47 | 100 | 3.5 | 8.36 | 15.3 | | | | | |
| 06/21/2011 | 19:32:17 | 106 | 3.5 | 8.36 | 17.1 | | | | | |
| 06/21/2011 | 19:32:47 | 108 | 3.5 | 8.36 | 18.8 | | | | | |
| 06/21/2011 | 19:33:17 | 106 | 3.5 | 8.36 | 20.6 | | | | | |
| 06/21/2011 | 19:33:46 | 103 | 3.5 | 8.36 | 22.3 | Reset Total, Vol = 22.27 bbl | | | | |
| 06/21/2011 | 19:33:47 | 106 | 3.5 | 8.36 | 22.3 | | | | | |
| 06/21/2011 | 19:34:17 | 143 | 3.4 | 12.68 | 24.1 | | | | | |
| 06/21/2011 | 19:34:33 | 137 | 3.4 | 12.70 | 25.0 | Start Mixing Lead Slurry | | | | |
| 06/21/2011 | 19:34:36 | 136 | 3.4 | 12.70 | 25.1 | 92bbls @ 12.5ppg | | | | |
| 06/21/2011 | 19:34:47 | 209 | 4.5 | 12.72 | 25.8 | | | | | |
| 06/21/2011 | 19:35:17 | 197 | 4.7 | 13.01 | 28.1 | | | | | |
| 06/21/2011 | 19:35:47 | 191 | 4.7 | 12.79 | 30.5 | | | | | |
| 06/21/2011 | 19:36:17 | 182 | 4.7 | 12.74 | 32.8 | | | | | |
| 06/21/2011 | 19:36:47 | 177 | 4.7 | 12.77 | 35.1 | | | | | |
| 06/21/2011 | 19:37:17 | 175 | 4.7 | 12.83 | 37.5 | | | | | |
| 06/21/2011 | 19:37:47 | 174 | 4.7 | 12.91 | 39.8 | | | | | |
| 06/21/2011 | 19:38:17 | 292 | 6.6 | 12.82 | 42.7 | | | | | |
| 06/21/2011 | 19:38:47 | 284 | 6.6 | 12.69 | 46.1 | | | | | |
| 06/21/2011 | 19:39:17 | 273 | 6.6 | 12.74 | 49.4 | | | | | |
| 06/21/2011 | 19:39:47 | 264 | 6.6 | 12.58 | 52.7 | | | | | |
| 06/21/2011 | 19:40:17 | 254 | 6.7 | 12.55 | 56.0 | | | | | |
| 06/21/2011 | 19:40:47 | 241 | 6.6 | 12.45 | 59.3 | | | | | |
| 06/21/2011 | 19:41:17 | 243 | 6.7 | 12.50 | 62.7 | | | | | |
| 06/21/2011 | 19:41:47 | 241 | 6.7 | 12.47 | 66.0 | | | | | |
| 06/21/2011 | 19:42:17 | 230 | 6.7 | 12.58 | 69.3 | | | | | |
| 06/21/2011 | 19:42:47 | 242 | 6.7 | 12.63 | 72.6 | | | | | |
| 06/21/2011 | 19:43:17 | 247 | 6.6 | 12.59 | 76.0 | | | | | |
| 06/21/2011 | 19:43:47 | 249 | 6.7 | 12.59 | 79.3 | | | | | |
| 06/21/2011 | 19:44:17 | 248 | 6.6 | 12.57 | 82.6 | | | | | |
| 06/21/2011 | 19:44:47 | 254 | 6.7 | 12.52 | 85.9 | | | | | |
| 06/21/2011 | 19:45:17 | 254 | 6.7 | 12.50 | 89.3 | | | | | |
| 06/21/2011 | 19:45:47 | 253 | 6.7 | 12.42 | 92.6 | | | | | |
| 06/21/2011 | 19:46:17 | 246 | 6.7 | 12.47 | 95.9 | | | | | |
| 06/21/2011 | 19:46:47 | 249 | 6.7 | 12.43 | 99.2 | | | | | |
| 06/21/2011 | 19:47:17 | 253 | 6.7 | 12.61 | 102.5 | | | | | |
| 06/21/2011 | 19:47:47 | 253 | 6.6 | 12.49 | 105.9 | | | | | |
| 06/21/2011 | 19:48:17 | 249 | 6.7 | 12.54 | 109.2 | | | | | |
| 06/21/2011 | 19:48:47 | 249 | 6.7 | 12.52 | 112.5 | | | | | |
| 06/21/2011 | 19:49:17 | 82 | 3.7 | 13.09 | 115.2 | | | | | |
| 06/21/2011 | 19:49:39 | 92 | 3.4 | 13.45 | 116.5 | End Lead Slurry | | | | |
| 06/21/2011 | 19:49:42 | 96 | 3.4 | 13.46 | 116.7 | Reset Total, Vol = 94.38 bbl | | | | |
| 06/21/2011 | 19:49:47 | 95 | 3.4 | 13.32 | 116.9 | | | | | |
| 06/21/2011 | 19:50:17 | 90 | 3.5 | 12.75 | 118.7 | | | | | |
| 06/21/2011 | 19:50:47 | 98 | 3.4 | 13.53 | 120.4 | | | | | |
| 06/21/2011 | 19:51:17 | 90 | 3.4 | 13.49 | 122.1 | | | | | |
| 06/21/2011 | 19:51:47 | 74 | 2.8 | 13.69 | 123.5 | | | | | |
| 06/21/2011 | 19:52:17 | 156 | 3.7 | 13.96 | 125.1 | | | | | |
| 06/21/2011 | 19:52:47 | 298 | 6.6 | 14.04 | 127.9 | | | | | |
| 06/21/2011 | 19:53:17 | 280 | 6.6 | 14.03 | 131.0 | | | | | |
| 06/21/2011 | 19:53:47 | 290 | 6.6 | 13.95 | 134.3 | | | | | |
| 06/21/2011 | 19:54:17 | 283 | 6.7 | 13.79 | 137.6 | | | | | |
| 06/21/2011 | 19:54:28 | 275 | 6.6 | 13.82 | 138.8 | Start Mixing Tail Slurry | | | | |

| Well | | | Field | | Job Start | | Customer | | Job Number | |
|------------|------------------------|-----------------------------|---------------------|-----------------|---------------|--------------------|----------|--|------------|--|
| WF05C-26 | | | N PARACHUTE | | Jun/21/2011 | | ENCANA | | BRWT-00079 | |
| Date | Time 24-hr clock | Treating Pressure PSI | Flow Rate B/M | Density LB/G | Volume BBL | Message | | | | |
| 06/21/2011 | 19:54:30 | 280 | 6.6 | 13.83 | 139.0 | Take WetDry Sample | | | | |
| 06/21/2011 | 19:54:47 | 285 | 6.6 | 13.88 | 140.9 | | | | | |
| 06/21/2011 | 19:55:17 | 289 | 6.6 | 13.84 | 144.2 | | | | | |
| 06/21/2011 | 19:55:47 | 295 | 6.6 | 13.92 | 147.5 | | | | | |
| 06/21/2011 | 19:56:17 | 287 | 6.6 | 13.91 | 150.9 | | | | | |
| 06/21/2011 | 19:56:42 | 289 | 6.6 | 13.88 | 153.6 | End Tail Slurry | | | | |
| 06/21/2011 | 19:56:47 | 297 | 6.6 | 13.84 | 154.2 | Drop Top Plug | | | | |
| 06/21/2011 | 19:56:48 | 281 | 6.6 | 13.85 | 154.3 | Start Displacement | | | | |
| 06/21/2011 | 19:56:49 | 268 | 6.6 | 13.86 | 154.4 | 131bbls Fresh H2o | | | | |
| 06/21/2011 | 19:57:17 | 208 | 5.4 | 13.89 | 157.1 | | | | | |
| 06/21/2011 | 19:57:47 | 109 | 4.1 | 13.88 | 159.6 | | | | | |
| 06/21/2011 | 19:58:17 | 97 | 3.5 | 13.88 | 161.4 | | | | | |
| 06/21/2011 | 19:58:47 | 8 | 0.0 | 13.90 | 162.0 | | | | | |
| 06/21/2011 | 19:59:17 | 8 | 0.0 | 13.89 | 162.0 | | | | | |
| 06/21/2011 | 19:59:47 | 11 | 0.0 | 13.89 | 162.0 | | | | | |
| 06/21/2011 | 20:00:17 | 14 | 0.0 | 13.88 | 162.0 | | | | | |
| 06/21/2011 | 20:00:47 | 10 | 0.0 | 13.91 | 162.0 | | | | | |
| 06/21/2011 | 20:01:17 | 126 | 3.1 | 9.90 | 162.7 | | | | | |
| 06/21/2011 | 20:01:47 | 101 | 4.8 | 9.24 | 165.1 | | | | | |
| 06/21/2011 | 20:02:17 | 87 | 4.8 | 8.93 | 167.5 | | | | | |
| 06/21/2011 | 20:02:47 | 86 | 4.8 | 8.79 | 169.9 | | | | | |
| 06/21/2011 | 20:03:17 | 84 | 4.9 | 8.68 | 172.3 | | | | | |
| 06/21/2011 | 20:03:47 | 84 | 4.9 | 8.65 | 174.8 | | | | | |
| 06/21/2011 | 20:04:17 | 83 | 4.8 | 8.55 | 177.2 | | | | | |
| 06/21/2011 | 20:04:47 | 81 | 4.8 | 8.48 | 179.6 | | | | | |
| 06/21/2011 | 20:05:17 | 82 | 4.8 | 8.48 | 182.0 | | | | | |
| 06/21/2011 | 20:05:47 | 84 | 4.8 | 8.45 | 184.4 | | | | | |
| 06/21/2011 | 20:06:17 | 78 | 4.8 | 8.35 | 186.8 | | | | | |
| 06/21/2011 | 20:06:47 | 78 | 4.9 | 8.35 | 189.3 | | | | | |
| 06/21/2011 | 20:07:17 | 147 | 6.8 | 8.38 | 191.9 | | | | | |
| 06/21/2011 | 20:07:47 | 144 | 6.7 | 8.28 | 195.3 | | | | | |
| 06/21/2011 | 20:08:17 | 136 | 6.7 | 8.26 | 198.7 | | | | | |
| 06/21/2011 | 20:08:47 | 140 | 6.8 | 8.25 | 202.1 | | | | | |
| 06/21/2011 | 20:09:17 | 148 | 6.7 | 8.26 | 205.4 | | | | | |
| 06/21/2011 | 20:09:47 | 158 | 6.7 | 8.37 | 208.8 | | | | | |
| 06/21/2011 | 20:10:17 | 175 | 6.7 | 8.36 | 212.2 | | | | | |
| 06/21/2011 | 20:10:47 | 184 | 6.7 | 8.36 | 215.5 | | | | | |
| 06/21/2011 | 20:11:17 | 206 | 6.7 | 8.35 | 218.9 | | | | | |
| 06/21/2011 | 20:11:47 | 232 | 6.7 | 8.36 | 222.3 | | | | | |
| 06/21/2011 | 20:12:17 | 245 | 6.7 | 8.36 | 225.6 | | | | | |
| 06/21/2011 | 20:12:47 | 269 | 6.7 | 8.36 | 229.0 | | | | | |
| 06/21/2011 | 20:13:17 | 288 | 6.7 | 8.36 | 232.3 | | | | | |
| 06/21/2011 | 20:13:47 | 303 | 6.7 | 8.36 | 235.7 | | | | | |
| 06/21/2011 | 20:14:17 | 319 | 6.7 | 8.36 | 239.0 | | | | | |
| 06/21/2011 | 20:14:47 | 337 | 6.7 | 8.36 | 242.3 | | | | | |
| 06/21/2011 | 20:15:17 | 352 | 6.7 | 8.36 | 245.7 | | | | | |
| 06/21/2011 | 20:15:47 | 369 | 6.7 | 8.36 | 249.0 | | | | | |
| 06/21/2011 | 20:16:17 | 383 | 6.7 | 8.36 | 252.4 | | | | | |
| 06/21/2011 | 20:16:47 | 408 | 6.7 | 8.36 | 255.7 | | | | | |
| 06/21/2011 | 20:17:17 | 412 | 6.7 | 8.33 | 259.0 | | | | | |
| 06/21/2011 | 20:17:47 | 428 | 6.7 | 8.37 | 262.4 | | | | | |
| 06/21/2011 | 20:18:17 | 457 | 6.7 | 8.36 | 265.7 | | | | | |
| 06/21/2011 | 20:18:47 | 463 | 6.7 | 8.36 | 269.0 | | | | | |
| 06/21/2011 | 20:19:17 | 477 | 6.7 | 8.36 | 272.4 | | | | | |

| Well | | | Field | | Job Start | | Customer | | Job Number | |
|------------|------------------------|-----------------------------|-------------|---------------------|-----------------|--|---------------|--|-------------------|--|
| WF05C-26 | | | N PARACHUTE | | Jun/21/2011 | | ENCANA | | BRWT-00079 | |
| Date | Time 24-hr clock | Treating Pressure PSI | | Flow Rate B/M | Density LB/G | | Volume BBL | | Message | |
| 06/21/2011 | 20:20:12 | 494 | | 6.6 | 8.36 | | 278.5 | | 30bbls To Surface | |
| 06/21/2011 | 20:20:17 | 503 | | 6.7 | 8.36 | | 279.0 | | | |
| 06/21/2011 | 20:20:47 | 426 | | 4.6 | 8.36 | | 281.8 | | | |
| 06/21/2011 | 20:21:17 | 435 | | 4.5 | 8.36 | | 284.1 | | | |
| 06/21/2011 | 20:21:47 | 430 | | 4.5 | 8.36 | | 286.4 | | | |
| 06/21/2011 | 20:22:17 | 446 | | 4.5 | 8.36 | | 288.6 | | | |
| 06/21/2011 | 20:22:47 | 385 | | 3.0 | 8.36 | | 290.9 | | | |
| 06/21/2011 | 20:23:17 | 401 | | 2.2 | 8.36 | | 292.0 | | | |
| 06/21/2011 | 20:23:47 | 405 | | 2.2 | 8.36 | | 293.1 | | | |
| 06/21/2011 | 20:24:17 | 410 | | 2.2 | 8.36 | | 294.2 | | | |
| 06/21/2011 | 20:24:47 | 408 | | 2.2 | 8.36 | | 295.2 | | | |
| 06/21/2011 | 20:25:17 | 412 | | 2.2 | 8.36 | | 296.3 | | | |
| 06/21/2011 | 20:25:47 | 427 | | 2.2 | 8.36 | | 297.4 | | | |
| 06/21/2011 | 20:26:17 | 428 | | 2.2 | 8.36 | | 298.5 | | | |
| 06/21/2011 | 20:26:47 | 419 | | 2.2 | 8.36 | | 299.6 | | | |
| 06/21/2011 | 20:27:12 | 994 | | 0.1 | 8.36 | | 300.4 | | Bump Top Plug | |
| 06/21/2011 | 20:27:15 | 991 | | 0.0 | 8.36 | | 300.4 | | Bump To 1000psi | |
| 06/21/2011 | 20:27:17 | 998 | | 0.0 | 8.36 | | 300.4 | | | |
| 06/21/2011 | 20:27:31 | 998 | | 0.0 | 8.36 | | 300.4 | | End Displacement | |
| 06/21/2011 | 20:27:47 | 994 | | 0.0 | 8.36 | | 300.4 | | | |
| 06/21/2011 | 20:28:17 | 993 | | 0.0 | 8.36 | | 300.4 | | | |
| 06/21/2011 | 20:28:47 | 993 | | 0.0 | 8.36 | | 300.4 | | | |
| 06/21/2011 | 20:29:17 | 993 | | 0.0 | 8.36 | | 300.4 | | | |
| 06/21/2011 | 20:29:47 | 993 | | 0.0 | 8.36 | | 300.4 | | | |
| 06/21/2011 | 20:30:17 | 993 | | 0.0 | 8.36 | | 300.4 | | | |
| 06/21/2011 | 20:30:47 | 994 | | 0.0 | 8.36 | | 300.4 | | | |
| 06/21/2011 | 20:31:17 | 994 | | 0.0 | 8.37 | | 300.4 | | | |
| 06/21/2011 | 20:31:47 | 994 | | 0.0 | 8.36 | | 300.4 | | | |
| 06/21/2011 | 20:32:17 | 995 | | 0.0 | 8.36 | | 300.4 | | | |
| 06/21/2011 | 20:32:47 | 995 | | 0.0 | 8.37 | | 300.4 | | | |
| 06/21/2011 | 20:33:17 | 995 | | 0.0 | 8.37 | | 300.4 | | | |
| 06/21/2011 | 20:33:47 | 995 | | 0.0 | 8.36 | | 300.4 | | | |
| 06/21/2011 | 20:34:17 | 995 | | 0.0 | 8.36 | | 300.4 | | | |
| 06/21/2011 | 20:34:47 | 995 | | 0.0 | 8.36 | | 300.4 | | | |
| 06/21/2011 | 20:35:17 | 79 | | 0.0 | 8.36 | | 300.4 | | | |
| 06/21/2011 | 20:35:47 | 11 | | 0.0 | 8.36 | | 300.4 | | | |
| 06/21/2011 | 20:36:17 | 11 | | 0.0 | 8.36 | | 300.4 | | | |
| 06/21/2011 | 20:36:47 | 11 | | 0.0 | 8.36 | | 300.4 | | | |
| 06/21/2011 | 20:37:17 | 11 | | 0.0 | 8.36 | | 300.4 | | | |

| | | | | |
|----------|-------------|-------------|----------|------------|
| Well | Field | Job Start | Customer | Job Number |
| WF05C-26 | N PARACHUTE | Jun/21/2011 | ENCANA | BRWT-00079 |

Post Job Summary

| Average Pump Rates, bbl/min | | | | | Volume of Fluid Injected, bbl | | | |
|---------------------------------------|-------|------------------------|-------------------------|--------------|-------------------------------|-------------------------------------|--------|-------------------------------------|
| Slurry | N2 | Mud | Maximum Rate | | Total Slurry | Mud | Spacer | N2 |
| 5.1 | | | 7.0 | | 300.4 | 0.0 | 24.9 | |
| Treating Pressure Summary, psi | | | | | Breakdown Fluid | | | |
| Maximum | Final | Average | Bump Plug to | Breakdown | Type | Volume | | Density |
| 2900 | 13 | 354 | | | | bbl | | lb/gal |
| Avg. N2 Percent | | Designed Slurry Volume | | Displacement | Mix Water Temp | Cement Circulated to Surface? | | Volume |
| % | | 0.0 bbl | | 146.3 bbl | 68 degF | <input checked="" type="checkbox"/> | | bbl |
| | | | | | | Washed Thru Perfs | | To |
| | | | | | | <input type="checkbox"/> | | ft |
| Customer or Authorized Representative | | | Schlumberger Supervisor | | | Circulation Lost | | Job Completed |
| CODY HUSEBY | | | JASON CRICK | | | <input type="checkbox"/> | | <input checked="" type="checkbox"/> |
| | | | | | | - | | - |