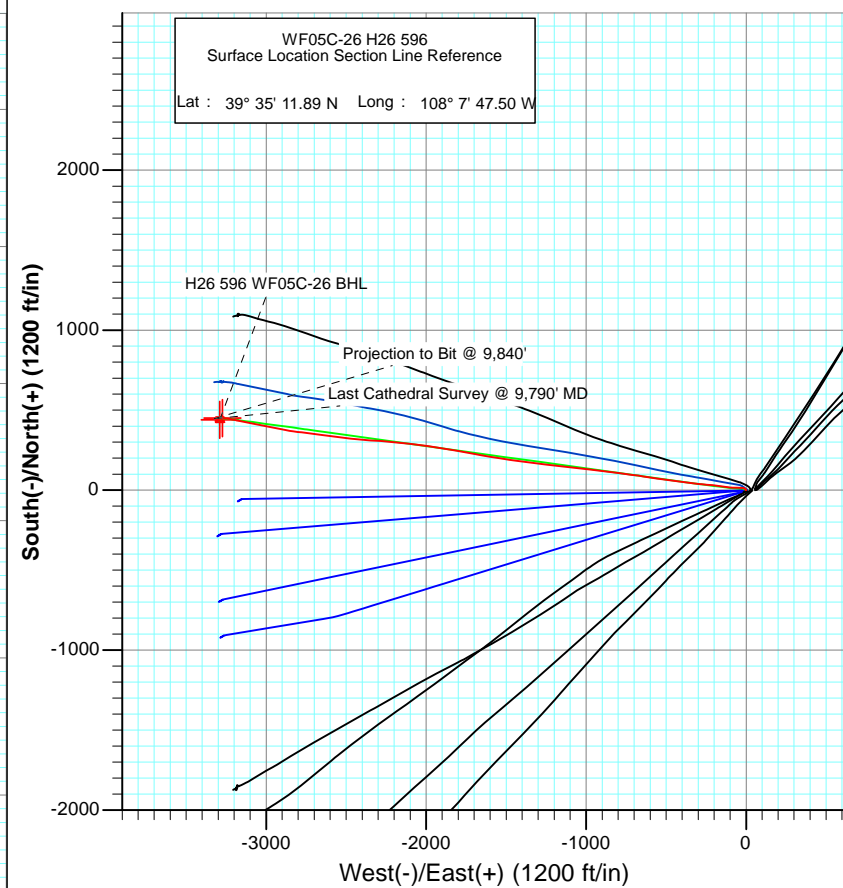
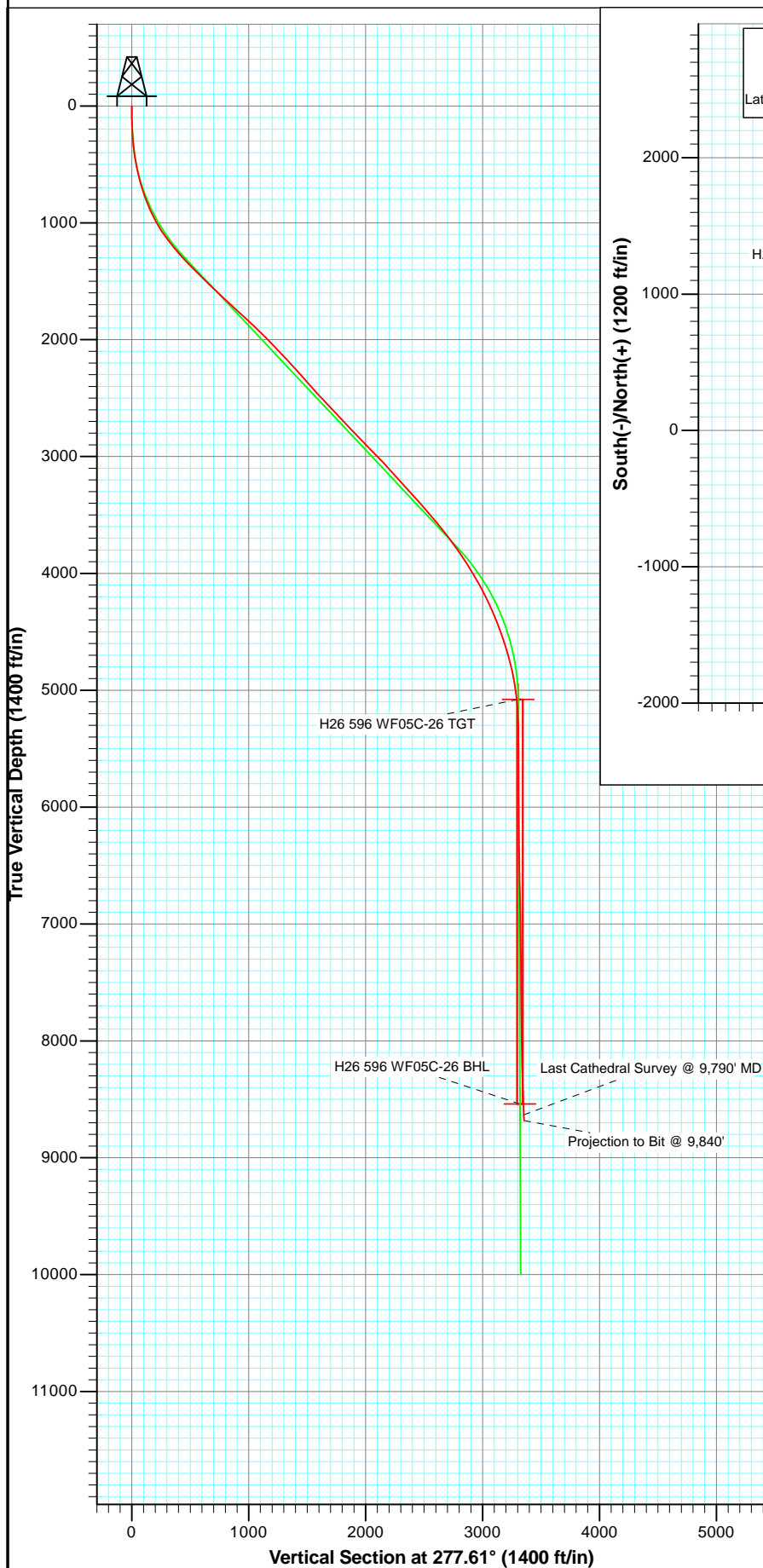




Project: North Piceance  
Site: H26 596  
Well: WF05C-26 H26 596  
Wellbore: DD  
Plan: FINAL



Azimuths to True North  
Magnetic North: 10.41°

Magnetic Field  
Strength: 52270.7nT  
Dip Angle: 65.79°  
Date: 7/22/2011  
Model: IGRF2010

Type	Target	TVD	Azimuth	Origin Type	N/S	E/W	From TVD
H26 596 WF05C-26 TGT	H26 596 WF05C-26 BHL	5079.0	277.61	Slot	0.0	0.0	0.0
H26 596 WF05C-26 BHL		8539.0	439.4				

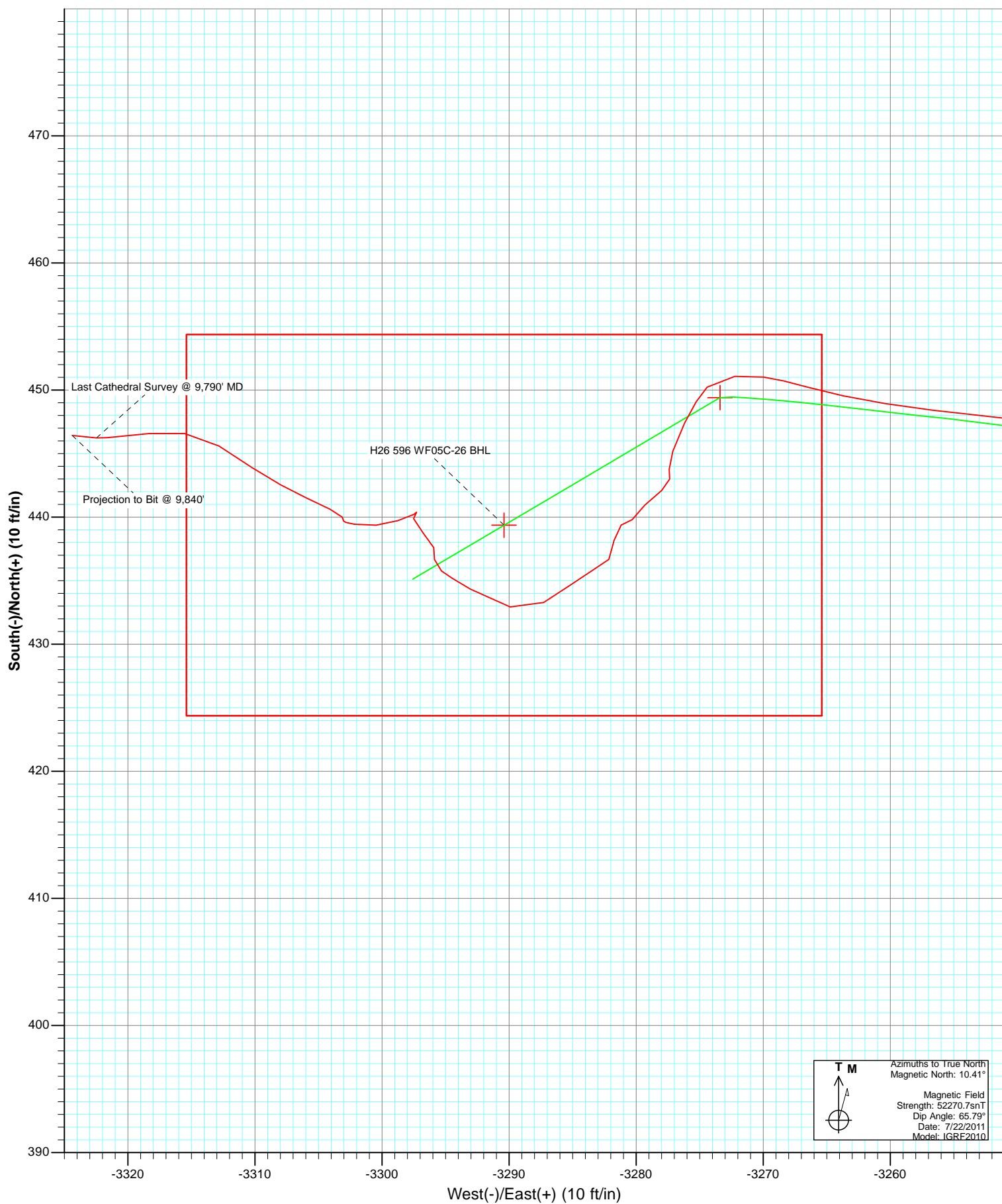
DD  
WF05C-26 H26 596  
115251(SH), 115293 (MH); LR  
KBE @ 6114.0ft (Patterson 303)  
Cl. @ 6092.0  
North American Datum 1983  
Well WF05C-26 H26 596, True North

Type	Target	TVD	Azimuth	Origin Type	N/S	E/W	From TVD
H26 596 WF05C-26 TGT	H26 596 WF05C-26 BHL	5079.0	277.61	Slot	0.0	0.0	0.0
H26 596 WF05C-26 BHL		8539.0	439.4				

Latitude: 39° 35' 16.33 N  
Longitude: 108° 8' 29.31 W



Project: North Piceance  
Site: H26 596  
Well: WF05C-26 H26 596  
Wellbore: DD  
Plan: FINAL



# Cathedral Energy Services

## Survey Report

<b>Company:</b>	EnCana Oil & Gas (USA) Inc	<b>Local Co-ordinate Reference:</b>	Well WF05C-26 H26 596
<b>Project:</b>	North Piceance	<b>TVD Reference:</b>	KBE @ 6114.0ft (Patterson 303)
<b>Site:</b>	H26 596	<b>MD Reference:</b>	KBE @ 6114.0ft (Patterson 303)
<b>Well:</b>	WF05C-26 H26 596	<b>North Reference:</b>	True
<b>Wellbore:</b>	DD	<b>Survey Calculation Method:</b>	Minimum Curvature
<b>Design:</b>	DD	<b>Database:</b>	USA EDM 5000 Multi Users DB

<b>Project</b>	North Piceance		
<b>Map System:</b>	US State Plane 1983	<b>System Datum:</b>	Mean Sea Level
<b>Geo Datum:</b>	North American Datum 1983		
<b>Map Zone:</b>	Colorado Central Zone		

Site		H26 596			
Site Position:		Northing:	1,649,294.53 ft	Latitude:	39° 35' 11.93 N
From:	Map	Easting:	2,258,943.98 ft	Longitude:	108° 7' 47.14 W
Position Uncertainty:	0.0 ft	Slot Radius:	13.200 in	Grid Convergence:	-1.66 °

Well	WF05C-26 H26 596					
Well Position	+N/-S	0.0 ft	Northing:	1,649,291.28 ft	Latitude:	39° 35' 11.89 N
	+E/-W	0.0 ft	Easting:	2,258,915.69 ft	Longitude:	108° 7' 47.50 W
Position Uncertainty		0.0 ft	Wellhead Elevation:	ft	Ground Level:	6,092.0 ft

<b>Wellbore</b>	DD				
<b>Magnetics</b>	<b>Model Name</b>	<b>Sample Date</b>	<b>Declination (°)</b>	<b>Dip Angle (°)</b>	<b>Field Strength (nT)</b>
	IGRF2010	7/22/2011	10.41	65.79	52,271

<b>Design</b>	DD				
<b>Audit Notes:</b>					
<b>Version:</b>	1.0	<b>Phase:</b>	ACTUAL	<b>Tie On Depth:</b>	0.0
<b>Vertical Section:</b>	<b>Depth From (TVD)</b>	<b>+N/-S</b>	<b>+E/-W</b>	<b>Direction</b>	
	(ft)	(ft)	(ft)	(°)	
	0.0	0.0	0.0	277.61	

<b>Survey Program</b>	<b>Date</b>	7/29/2011			
<b>From (ft)</b>	<b>To (ft)</b>	<b>Survey (Wellbore)</b>	<b>Tool Name</b>	<b>Description</b>	
30.0	171.0	Survey #1 (DD)	Gyro	Gyro	
230.0	9,840.0	Survey #2 (DD)	MWD	Geolink MWD	

<b>Survey</b>									
<b>Measured Depth (ft)</b>	<b>Inclination (°)</b>	<b>Azimuth (°)</b>	<b>Vertical Depth (ft)</b>	<b>+N/-S (ft)</b>	<b>+E/-W (ft)</b>	<b>Vertical Section (ft)</b>	<b>Dogleg Rate (°/100ft)</b>	<b>Build Rate (°/100ft)</b>	<b>Formations / Comments</b>
0.0	0.00	0.00	0.0	0.0	0.0	0.0	0.00	0.00	
30.0	0.96	323.54	30.0	0.2	-0.1	0.2	3.20	3.20	
60.0	0.94	325.93	60.0	0.6	-0.4	0.5	0.15	-0.07	
90.0	1.20	327.00	90.0	1.1	-0.7	0.9	0.87	0.87	
120.0	1.43	325.02	120.0	1.6	-1.1	1.3	0.78	0.77	
150.0	1.85	326.58	150.0	2.4	-1.6	1.9	1.41	1.40	
171.0	2.06	328.56	171.0	3.0	-2.0	2.4	1.05	1.00	Last Gyro Survey @ 171' MD
230.0	4.10	315.70	229.9	5.4	-4.0	4.7	3.63	3.46	
261.0	4.40	313.10	260.8	7.0	-5.7	6.5	1.15	0.97	
291.0	5.00	308.50	290.7	8.6	-7.5	8.6	2.36	2.00	
322.0	5.60	307.80	321.6	10.3	-9.8	11.1	1.95	1.94	
352.0	6.30	289.60	351.4	11.8	-12.5	13.9	6.67	2.33	

# Cathedral Energy Services

## Survey Report

<b>Company:</b>	EnCana Oil & Gas (USA) Inc	<b>Local Co-ordinate Reference:</b>	Well WF05C-26 H26 596
<b>Project:</b>	North Piceance	<b>TVD Reference:</b>	KBE @ 6114.0ft (Patterson 303)
<b>Site:</b>	H26 596	<b>MD Reference:</b>	KBE @ 6114.0ft (Patterson 303)
<b>Well:</b>	WF05C-26 H26 596	<b>North Reference:</b>	True
<b>Wellbore:</b>	DD	<b>Survey Calculation Method:</b>	Minimum Curvature
<b>Design:</b>	DD	<b>Database:</b>	USA EDM 5000 Multi Users DB

### Survey

Measured Depth (ft)	Inclination (°)	Azimuth (°)	Vertical Depth (ft)	+N/-S (ft)	+E/-W (ft)	Vertical Section (ft)	Dogleg Rate (°/100ft)	Build Rate (°/100ft)	Formations / Comments
383.0	7.40	283.10	382.2	12.8	-16.0	17.6	4.34	3.55	
413.0	8.50	278.20	411.9	13.6	-20.1	21.7	4.30	3.67	
444.0	9.60	273.10	442.5	14.0	-25.0	26.6	4.39	3.55	
474.0	10.60	269.00	472.0	14.1	-30.2	31.8	4.10	3.33	
505.0	11.20	270.00	502.5	14.1	-36.1	37.6	2.03	1.94	
554.0	12.70	271.20	550.4	14.2	-46.2	47.7	3.10	3.06	
599.0	14.10	271.90	594.2	14.5	-56.6	58.1	3.13	3.11	
645.0	15.20	271.90	638.7	14.9	-68.3	69.6	2.39	2.39	
691.0	16.60	273.00	682.9	15.4	-80.9	82.2	3.11	3.04	
737.0	17.90	274.20	726.9	16.3	-94.5	95.8	2.93	2.83	
782.0	18.90	276.60	769.6	17.6	-108.6	110.0	2.79	2.22	
828.0	20.40	277.80	812.9	19.6	-124.0	125.5	3.38	3.26	
874.0	22.10	277.50	855.7	21.8	-140.5	142.1	3.70	3.70	
920.0	24.40	277.60	898.0	24.2	-158.5	160.3	5.00	5.00	
966.0	26.00	278.00	939.6	26.8	-177.9	179.9	3.50	3.48	
1,011.0	28.30	276.50	979.7	29.4	-198.3	200.4	5.33	5.11	
1,057.0	30.70	275.50	1,019.7	31.8	-220.8	223.0	5.33	5.22	
1,103.0	33.00	274.20	1,058.8	33.8	-245.0	247.3	5.22	5.00	
1,149.0	34.80	274.70	1,097.0	35.8	-270.5	272.9	3.96	3.91	
1,194.0	36.80	276.00	1,133.4	38.3	-296.7	299.2	4.75	4.44	
1,240.0	38.30	276.70	1,169.9	41.4	-324.6	327.2	3.39	3.26	
1,286.0	39.70	277.30	1,205.7	44.9	-353.3	356.2	3.15	3.04	
1,332.0	40.30	278.00	1,240.9	48.8	-382.6	385.7	1.63	1.30	
1,377.0	41.10	278.00	1,275.0	52.9	-411.7	415.1	1.78	1.78	
1,423.0	41.40	277.20	1,309.6	56.9	-441.8	445.4	1.32	0.65	
1,469.0	43.00	276.90	1,343.7	60.7	-472.4	476.3	3.51	3.48	
1,515.0	44.60	277.80	1,376.9	64.8	-504.0	508.1	3.73	3.48	
1,560.0	45.80	278.10	1,408.6	69.2	-535.6	540.1	2.71	2.67	
1,606.0	46.00	278.40	1,440.6	74.0	-568.3	573.1	0.64	0.43	
1,652.0	46.20	278.80	1,472.5	78.9	-601.1	606.2	0.76	0.43	
1,698.0	45.90	279.20	1,504.4	84.1	-633.8	639.4	0.90	-0.65	
1,710.0	46.10	279.20	1,512.8	85.5	-642.3	648.0	1.67	1.67	
1,803.0	45.80	277.50	1,577.4	95.2	-708.5	714.8	1.35	-0.32	
1,895.0	46.90	277.00	1,640.9	103.6	-774.5	781.4	1.26	1.20	
1,986.0	47.80	276.80	1,702.6	111.6	-840.9	848.3	1.00	0.99	
2,078.0	47.60	277.80	1,764.5	120.3	-908.4	916.3	0.83	-0.22	
2,170.0	46.80	277.10	1,827.0	129.0	-975.4	983.9	1.03	-0.87	
2,261.0	45.90	276.60	1,889.8	136.9	-1,040.7	1,049.7	1.07	-0.99	
2,353.0	45.60	275.40	1,954.0	143.8	-1,106.3	1,115.6	0.99	-0.33	
2,444.0	44.80	276.40	2,018.1	150.4	-1,170.5	1,180.1	1.18	-0.88	
2,536.0	43.70	277.10	2,084.0	157.9	-1,234.2	1,244.3	1.31	-1.20	
2,628.0	42.40	277.40	2,151.3	165.9	-1,296.5	1,307.1	1.43	-1.41	
2,719.0	42.50	275.80	2,218.4	172.9	-1,357.6	1,368.5	1.19	0.11	
2,811.0	42.50	278.60	2,286.2	180.7	-1,419.2	1,430.6	2.06	0.00	
2,902.0	41.40	277.90	2,353.9	189.4	-1,479.4	1,491.5	1.31	-1.21	
2,994.0	41.60	279.40	2,422.8	198.6	-1,539.7	1,552.4	1.10	0.22	
3,085.0	42.80	279.60	2,490.2	208.7	-1,600.0	1,613.5	1.33	1.32	
3,177.0	44.10	280.60	2,557.0	219.8	-1,662.2	1,676.7	1.60	1.41	
3,269.0	42.70	279.30	2,623.9	230.7	-1,724.5	1,739.9	1.81	-1.52	
3,360.0	43.40	280.70	2,690.4	241.5	-1,785.7	1,801.9	1.30	0.77	
3,452.0	43.90	279.70	2,756.9	252.8	-1,848.2	1,865.4	0.93	0.54	
3,543.0	43.60	279.50	2,822.7	263.3	-1,910.2	1,928.2	0.36	-0.33	
3,635.0	43.80	277.20	2,889.2	272.5	-1,973.1	1,991.8	1.74	0.22	

# Cathedral Energy Services

## Survey Report

<b>Company:</b>	EnCana Oil & Gas (USA) Inc	<b>Local Co-ordinate Reference:</b>	Well WF05C-26 H26 596
<b>Project:</b>	North Piceance	<b>TVD Reference:</b>	KBE @ 6114.0ft (Patterson 303)
<b>Site:</b>	H26 596	<b>MD Reference:</b>	KBE @ 6114.0ft (Patterson 303)
<b>Well:</b>	WF05C-26 H26 596	<b>North Reference:</b>	True
<b>Wellbore:</b>	DD	<b>Survey Calculation Method:</b>	Minimum Curvature
<b>Design:</b>	DD	<b>Database:</b>	USA EDM 5000 Multi Users DB

### Survey

Measured Depth (ft)	Inclination (°)	Azimuth (°)	Vertical Depth (ft)	+N/-S (ft)	+E/-W (ft)	Vertical Section (ft)	Dogleg Rate (°/100ft)	Build Rate (°/100ft)	Formations / Comments
3,726.0	44.70	277.60	2,954.4	280.7	-2,036.1	2,055.3	1.04	0.99	
3,818.0	44.00	277.00	3,020.2	288.8	-2,099.8	2,119.6	0.89	-0.76	
3,909.0	42.10	275.20	3,086.7	295.5	-2,161.6	2,181.7	2.49	-2.09	
4,001.0	43.10	275.60	3,154.4	301.3	-2,223.6	2,243.9	1.13	1.09	
4,093.0	42.30	275.20	3,222.0	307.2	-2,285.7	2,306.3	0.92	-0.87	
4,184.0	41.50	274.00	3,289.7	312.1	-2,346.3	2,366.9	1.24	-0.88	
4,276.0	41.60	274.00	3,358.6	316.3	-2,407.2	2,427.8	0.11	0.11	
4,368.0	41.60	275.10	3,427.4	321.2	-2,468.0	2,488.8	0.79	0.00	
4,459.0	40.20	278.00	3,496.2	327.9	-2,527.2	2,548.4	2.59	-1.54	
4,551.0	40.00	277.40	3,566.5	335.9	-2,585.9	2,607.7	0.47	-0.22	
4,642.0	38.70	278.00	3,636.9	343.6	-2,643.1	2,665.4	1.49	-1.43	
4,734.0	36.30	277.80	3,709.9	351.3	-2,698.6	2,721.4	2.61	-2.61	
4,825.0	35.50	276.20	3,783.6	357.8	-2,751.6	2,774.7	1.35	-0.88	
4,917.0	33.70	277.40	3,859.3	364.0	-2,803.4	2,826.9	2.09	-1.96	
5,009.0	32.10	278.80	3,936.6	371.0	-2,852.9	2,876.9	1.93	-1.74	
5,100.0	30.70	281.30	4,014.2	379.3	-2,899.6	2,924.3	2.10	-1.54	
5,192.0	29.80	281.60	4,093.7	388.5	-2,945.0	2,970.5	0.99	-0.98	
5,283.0	26.70	281.10	4,173.9	397.0	-2,987.2	3,013.5	3.42	-3.41	
5,374.0	24.80	281.60	4,255.8	404.7	-3,026.0	3,052.9	2.10	-2.09	
5,466.0	23.60	280.40	4,339.7	411.9	-3,063.0	3,090.6	1.41	-1.30	
5,558.0	21.40	280.40	4,424.7	418.3	-3,097.6	3,125.7	2.39	-2.39	
5,649.0	19.50	281.60	4,510.0	424.3	-3,128.8	3,157.5	2.14	-2.09	
5,741.0	17.80	280.20	4,597.2	429.9	-3,157.7	3,186.8	1.91	-1.85	
5,833.0	16.50	283.50	4,685.1	435.5	-3,184.3	3,213.9	1.76	-1.41	
5,924.0	13.90	281.00	4,772.9	440.6	-3,207.6	3,237.7	2.95	-2.86	
6,015.0	12.20	281.10	4,861.5	444.5	-3,227.7	3,258.2	1.87	-1.87	
6,107.0	8.40	275.60	4,952.1	447.0	-3,244.0	3,274.6	4.26	-4.13	
6,199.0	7.60	276.90	5,043.2	448.4	-3,256.7	3,287.4	0.89	-0.87	
6,290.0	5.10	285.90	5,133.6	450.2	-3,266.6	3,297.4	2.95	-2.75	
6,382.0	2.20	260.40	5,225.4	451.1	-3,272.2	3,303.1	3.54	-3.15	
6,473.0	0.90	218.80	5,316.4	450.2	-3,274.4	3,305.2	1.80	-1.43	
6,565.0	0.90	214.90	5,408.4	449.1	-3,275.3	3,305.9	0.07	0.00	
6,656.0	1.50	205.10	5,499.3	447.4	-3,276.2	3,306.6	0.69	0.66	
6,748.0	1.50	199.90	5,591.3	445.2	-3,277.1	3,307.2	0.15	0.00	
6,839.0	0.40	158.60	5,682.3	443.8	-3,277.4	3,307.3	1.35	-1.21	
6,931.0	0.60	188.70	5,774.3	443.0	-3,277.4	3,307.2	0.35	0.22	
7,022.0	0.90	233.10	5,865.3	442.1	-3,278.0	3,307.7	0.69	0.33	
7,114.0	1.30	226.40	5,957.3	440.9	-3,279.3	3,308.8	0.46	0.43	
7,205.0	0.60	208.80	6,048.3	439.8	-3,280.3	3,309.7	0.82	-0.77	
7,297.0	0.80	268.60	6,140.2	439.4	-3,281.2	3,310.5	0.78	0.22	
7,388.0	1.50	176.30	6,231.2	438.2	-3,281.7	3,310.9	1.90	0.77	
7,480.0	0.70	238.90	6,323.2	436.7	-3,282.1	3,311.1	1.45	-0.87	
7,572.0	1.30	234.70	6,415.2	435.8	-3,283.5	3,312.3	0.66	0.65	
7,663.0	1.30	238.30	6,506.2	434.6	-3,285.2	3,313.8	0.09	0.00	
7,755.0	1.80	235.90	6,598.1	433.3	-3,287.3	3,315.7	0.55	0.54	
7,846.0	1.90	287.50	6,689.1	432.9	-3,289.9	3,318.3	1.77	0.11	
7,938.0	2.40	299.30	6,781.0	434.3	-3,293.0	3,321.6	0.72	0.54	
8,029.0	1.00	308.80	6,872.0	435.8	-3,295.3	3,324.0	1.56	-1.54	
8,121.0	0.50	11.20	6,964.0	436.7	-3,295.9	3,324.7	0.96	-0.54	
8,213.0	0.70	345.80	7,056.0	437.6	-3,295.9	3,324.8	0.36	0.22	
8,304.0	1.20	311.30	7,147.0	438.8	-3,296.8	3,325.8	0.81	0.55	
8,396.0	0.60	359.00	7,239.0	439.9	-3,297.5	3,326.7	0.99	-0.65	
8,487.0	0.30	85.20	7,330.0	440.4	-3,297.3	3,326.6	0.72	-0.33	

# Cathedral Energy Services

## Survey Report

<b>Company:</b>	EnCana Oil & Gas (USA) Inc	<b>Local Co-ordinate Reference:</b>	Well WF05C-26 H26 596
<b>Project:</b>	North Piceance	<b>TVD Reference:</b>	KBE @ 6114.0ft (Patterson 303)
<b>Site:</b>	H26 596	<b>MD Reference:</b>	KBE @ 6114.0ft (Patterson 303)
<b>Well:</b>	WF05C-26 H26 596	<b>North Reference:</b>	True
<b>Wellbore:</b>	DD	<b>Survey Calculation Method:</b>	Minimum Curvature
<b>Design:</b>	DD	<b>Database:</b>	USA EDM 5000 Multi Users DB

### Survey

Measured Depth (ft)	Inclination (°)	Azimuth (°)	Vertical Depth (ft)	+N/-S (ft)	+E/-W (ft)	Vertical Section (ft)	Dogleg Rate (°/100ft)	Build Rate (°/100ft)	Formations / Comments
8,579.0	0.60	246.50	7,422.0	440.2	-3,297.5	3,326.7	0.97	0.33	
8,670.0	1.10	250.40	7,513.0	439.7	-3,298.7	3,327.9	0.55	0.55	
8,762.0	1.10	265.30	7,604.9	439.4	-3,300.5	3,329.6	0.31	0.00	
8,853.0	1.10	280.40	7,695.9	439.4	-3,302.2	3,331.3	0.32	0.00	
8,945.0	0.10	37.70	7,787.9	439.7	-3,303.0	3,332.1	1.25	-1.09	
9,037.0	0.40	327.70	7,879.9	440.0	-3,303.1	3,332.3	0.41	0.33	
9,128.0	1.10	293.40	7,970.9	440.6	-3,304.1	3,333.3	0.88	0.77	
9,220.0	1.40	297.80	8,062.9	441.5	-3,305.9	3,335.3	0.34	0.33	
9,311.0	1.50	295.80	8,153.9	442.5	-3,308.0	3,337.4	0.12	0.11	
9,403.0	1.80	305.72	8,245.8	443.9	-3,310.2	3,339.8	0.45	0.33	
9,495.0	2.10	300.90	8,337.8	445.6	-3,312.8	3,342.7	0.37	0.33	
9,586.0	1.60	275.00	8,428.7	446.6	-3,315.5	3,345.5	1.06	-0.55	
9,678.0	1.90	265.90	8,520.7	446.6	-3,318.3	3,348.2	0.44	0.33	
9,769.0	2.30	263.10	8,611.6	446.3	-3,321.6	3,351.5	0.45	0.44	
9,790.0	2.20	275.49	8,632.6	446.2	-3,322.5	3,352.3	2.36	-0.48	Last Cathedral Survey @ 9,790' MD
9,840.0	2.20	275.50	8,682.5	446.4	-3,324.4	3,354.2	0.00	0.00	Projection to Bit @ 9,840'

### Targets

Target Name	Dip Angle (°)	Dip Dir. (°)	TVD (ft)	+N/-S (ft)	+E/-W (ft)	Northing (ft)	Easting (ft)	Latitude	Longitude
- hit/miss target									
- Shape									
H26 596 WF05C-26 BHI	0.00	0.00	8,539.0	439.4	-3,290.4	1,649,825.69	2,255,639.39	39° 35' 16.23 N	108° 8' 29.53 W
- actual wellpath misses target center by 29.4ft at 9695.3ft MD (8538.0 TVD, 446.5 N, -3318.9 E)									
- Rectangle (sides W30.0 H50.0 D0.0)									
H26 596 WF05C-26 TG	0.00	0.00	5,079.0	449.4	-3,273.4	1,649,835.24	2,255,656.67	39° 35' 16.33 N	108° 8' 29.31 W
- actual wellpath misses target center by 12.2ft at 6236.5ft MD (5080.3 TVD, 449.1 N, -3261.3 E)									
- Point									

### Design Annotations

Measured Depth (ft)	Vertical Depth (ft)	Local Coordinates		Comment
		+N/-S (ft)	+E/-W (ft)	
171.0	171.0	3.0	-2.0	Last Gyro Survey @ 171' MD
9,790.0	8,632.6	446.2	-3,322.5	Last Cathedral Survey @ 9,790' MD
9,840.0	8,682.5	446.4	-3,324.4	Projection to Bit @ 9,840'

Checked By: \_\_\_\_\_ Approved By: \_\_\_\_\_ Date: \_\_\_\_\_