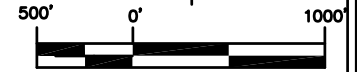
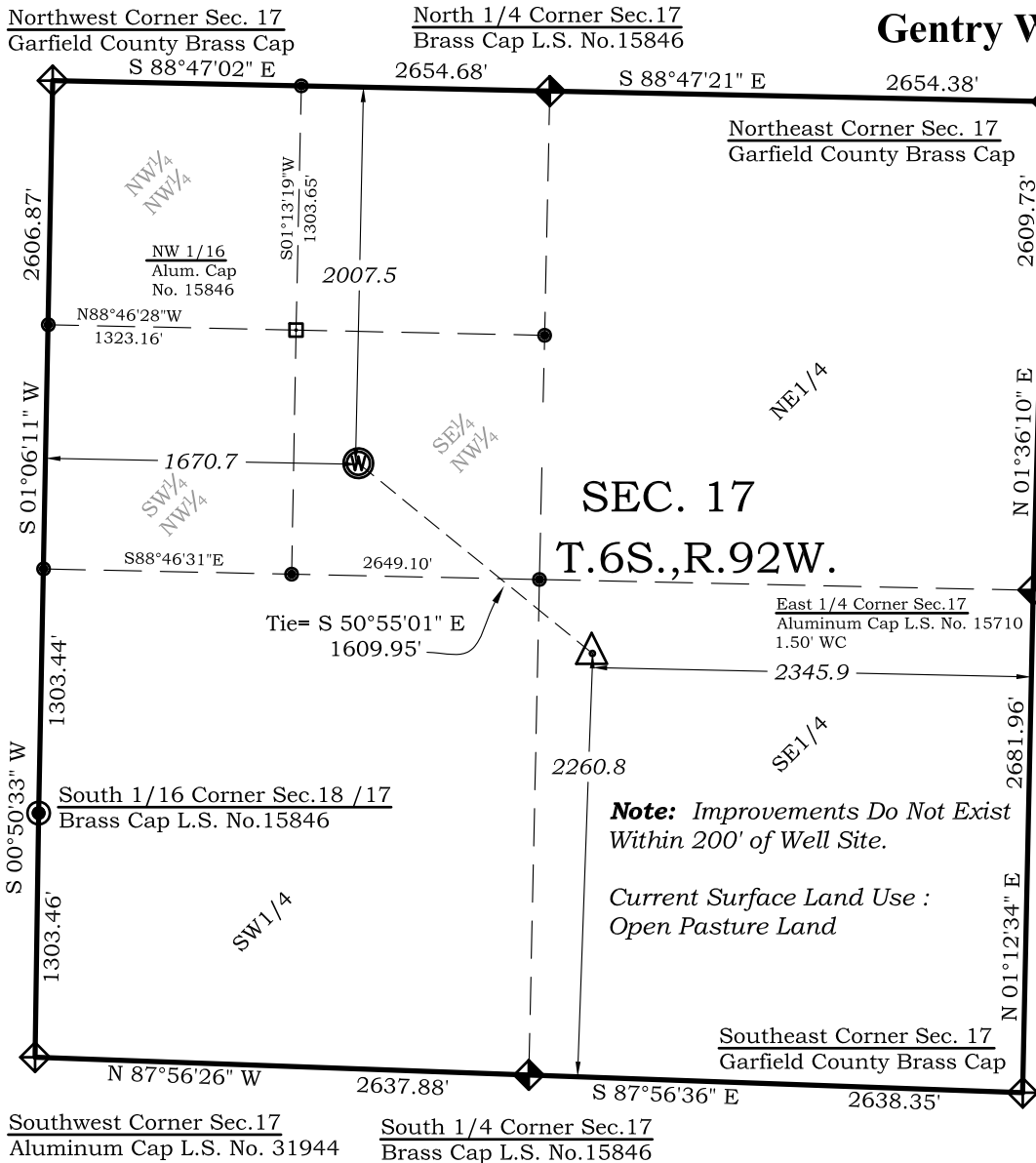


Well Location Plat Gentry Well B8



Graphic Scale in Feet
1"=1000'

Legend

- ◆ - Field Surveyed Section Corner
- ◆ - Field Surveyed Quarter Corner
- - Calculated Section Corner Location
- - Field Surveyed 1/6 Corner

Bottom Hole: Gentry B8

2261' FSL
2346' FEL
NAD83
Lat: 39.525684126°N
Long: 107.689528248°W
NAD27
Lat: 39.525703601°N
Long: 107.688912200°W

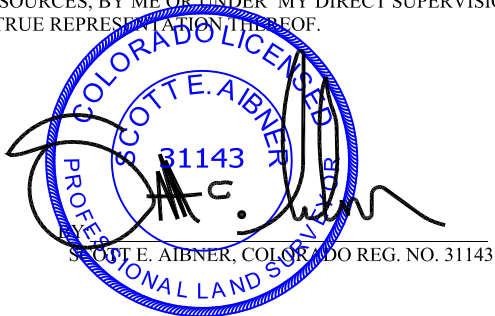
Surface: Gentry B8

2008' FNL
1671' FWL
Gnd El= 5624.5
Pad El= 5624.5
NAD83
Lat: 39.528366044°N
Long: 107.694062904°W
NAD27
Lat: 39.528385524°N
Long: 107.693446653°W
UTM 13 NORTH
NAD 1983
NORTHING
14366371.614
EASTING
880723.090

Prepared For Antero Resources
Proposed Gentry B8 Well Situate in The SE 1/4 NW 1/4 Section
17, Township 6 South, Range 92 West of the 6 th. Principal
Meridian, County of Garfield, State of Colorado

SURVEYOR'S CERTIFICATE

I, SCOTT E. AIBNER, A REGISTERED LAND SURVEYOR, LICENSED UNDER THE LAWS OF THE STATE OF COLORADO DO HEREBY CERTIFY THAT THE SURVEY SHOWN HEREON WAS PREPARED BY RIVER VALLEY SURVEY, INC., FOR ANTERO RESOURCES, BY ME OR UNDER MY DIRECT SUPERVISION AND THAT THIS PLAT IS A TRUE REPRESENTATION OF THE SAME.



Notes:

- 1.) LATITUDE AND LONGITUDE COORDINATES ARE DIFFERENTIALLY CORRECTED AND BASED ON PUBLISHED NGS CONTROL STATION "WDP-5".
- SYSTEM: UTM ZONE: 13 NORTH DATUM: NAD 1983 (CONUS)
- 2.) ELEVATIONS ARE BASED ON NAVD OF 1929.
- 3.) ALL BOTTOM AND TOP HOLE LOCATIONS ARE MEASURED 90 DEGREES FROM SECTION LINE.
- 4.) USGS QUADRANGLE MAP "SILT CO".
- 5.) CURRENT SURFACE LAND USE: OPEN RANGELAND
- 6.) PDOP AT THE TIME OF LOCATION OF SURFACE WELL = 1.2
- 7.) BOTTOM HOLE DISTANCE TO NEAREST LEASE LINE IS 412.8'



River Valley Survey, Inc.
110 East 3rd. Street, Suite 207
Rifle, Colorado 81650
Ph: 970-379-7846

Project: Gentry B Pad

Proj. No. 06001-11

Field Date: 01-19-07

Scale: 1"= 1000'

Date: 01-10-12

Sheet: 1 of 7

Well Location Plat
Prepared For Antero Resources

Situate In:
SE 1/4 NW 1/4 Section 17, T.6S., R. 92 W.
of the 6th P.M., Garfield County,
Colorado

