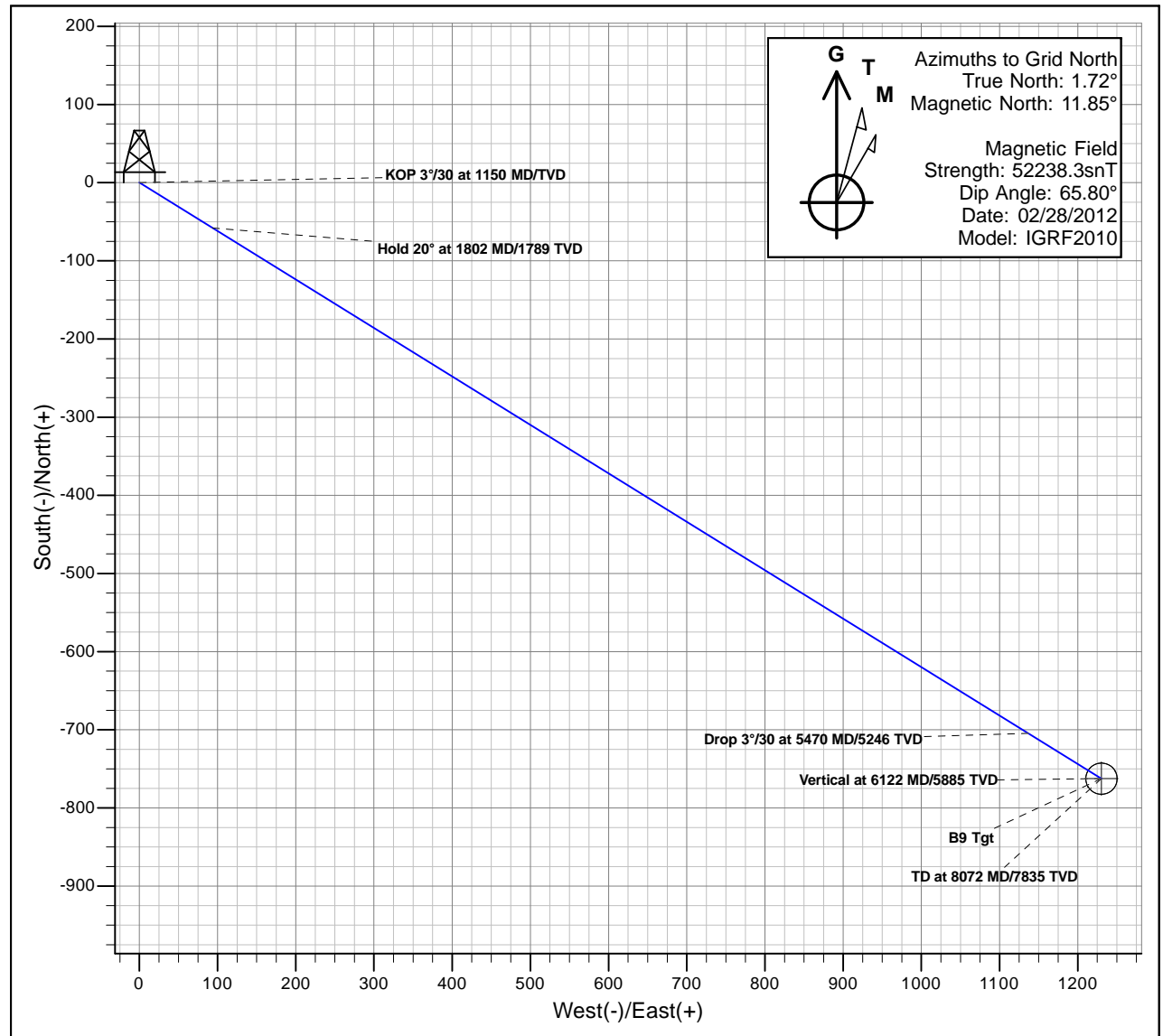
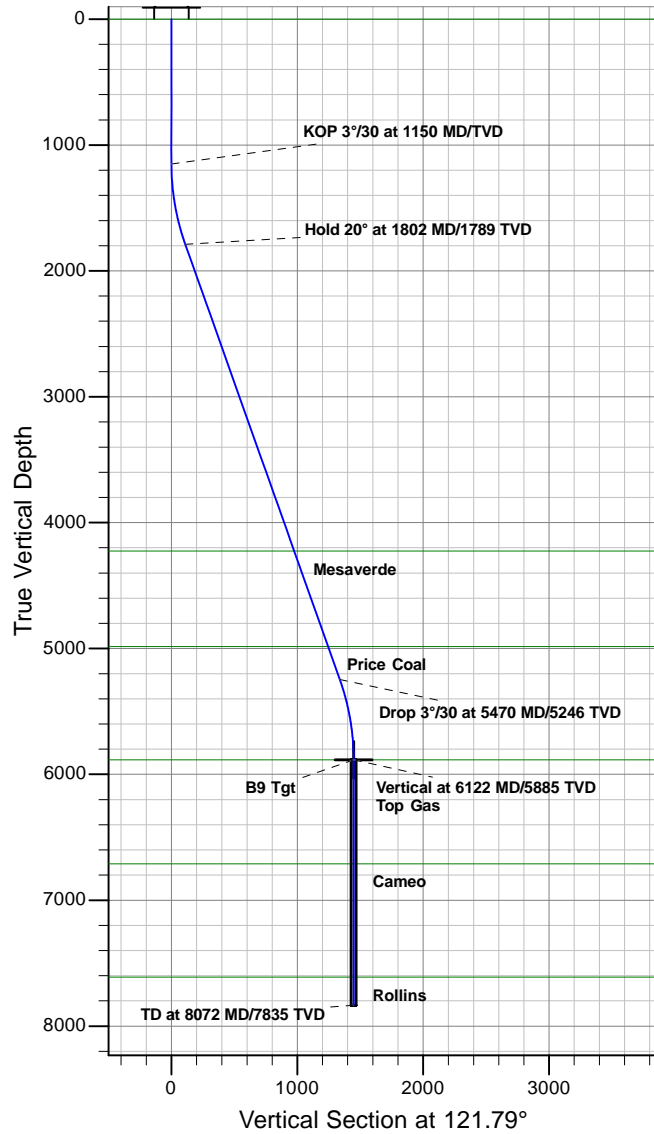




Antero Resources

Gentry B09 (111423)
Gentry B09 P02



REFERENCE INFORMATION

Co-ordinate (N/E) Reference: Well Gentry B09 (111423) - Slot B9, Grid North
Vertical (TVD) Reference: KB @ 5648.00ft (Original Well Elev)
Section (VS) Reference: Slot - B9(0.00N, 0.00E)
Measured Depth Reference: KB @ 5648.00ft (Original Well Elev)
Calculation Method: Minimum Curvature

PROJECT DETAILS: Gentry

Geodetic System: Universal Transverse Mercator
Datum: North American Datum 1983
Ellipsoid: GRS 1980
Zone: Zone 13N (108 W to 102 W)
System Datum: Mean Sea Level

SECTION DETAILS

MD	Inc	Azi	TVD	+N/-S	+E/-W	Dleg	TFace	VFace	Target
0.00	0.00	0.00	0.00	0.00	0.00	0.00	0.00	0.00	
1150.00	0.00	0.00	1150.00	0.00	0.00	0.00	0.00	0.00	
1801.57	19.55	121.79	1789.01	-57.99	93.56	3.00	121.79	110.07	
5469.98	19.55	121.79	5245.99	-704.60	1136.81	0.00	0.00	1337.46	
6121.56	0.00	121.79	5885.00	-762.59	1230.37	3.00	180.00	1447.53	B9 Tgt
8071.56	0.00	121.79	7835.00	-762.59	1230.37	0.00	121.79	1447.53	

Antero Resources

Gentry

Gentry B

Gentry B09 (111423) - Slot B9

Gentry B09

Plan: Gentry B09 P02

Survey Report - Geographic

29 December, 2011

Survey Report - Geographic

Company:	Antero Resources	Local Co-ordinate Reference:	Well Gentry B09 (111423) - Slot B9
Project:	Gentry	TVD Reference:	KB @ 5648.00ft (Original Well Elev)
Site:	Gentry B	MD Reference:	KB @ 5648.00ft (Original Well Elev)
Well:	Gentry B09 (111423)	North Reference:	Grid
Wellbore:	Gentry B09	Survey Calculation Method:	Minimum Curvature
Design:	Gentry B09 P02	Database:	EDM5000

Project	Gentry		
Map System:	Universal Transverse Mercator	System Datum:	Mean Sea Level
Geo Datum:	North American Datum 1983		
Map Zone:	Zone 13N (108 W to 102 W)		

Site		Gentry B			
Site Position:		Northing:	14,366,383.28 usft	Latitude:	39.528393199°N
From:	Map	Easting:	880,664.23 usft	Longitude:	107.694272643°W
Position Uncertainty:	0.00 ft	Slot Radius:	13.20 in	Grid Convergence:	-1.72 °

Well	Gentry B09 (111423) - Slot B9					
Well Position	+N/-S	0.00 ft	Northing:	14,366,367.73 usft	Latitude:	39.528356993°N
	+E/-W	0.00 ft	Easting:	880,742.71 usft	Longitude:	107.693992990°W
Position Uncertainty		0.00 ft	Wellhead Elevation:	ft	Ground Level:	5,624.00 ft

Wellbore	Gentry B09				
Magnetics	Model Name	Sample Date	Declination (°)	Dip Angle (°)	Field Strength (nT)
	IGRF2010	02/28/12	10.13	65.80	52,238

Design	Gentry B09 P02				
Audit Notes:					
Version:	Phase:	PLAN	Tie On Depth:	0.00	
Vertical Section:	Depth From (TVD) (ft)	+N/-S (ft)	+E/-W (ft)	Direction (°)	
	0.00	0.00	0.00	121.79	

Survey Tool Program	Date	12/29/11			
From (ft)	To (ft)	Survey (Wellbore)	Tool Name	Description	
0.00	8,071.56	Gentry B09 P02 (Gentry B09)	MWD	MWD - Standard	

Planned Survey									
Measured Depth (ft)	Inclination (°)	Azimuth (°)	Vertical Depth (ft)	+N/-S (ft)	+E/-W (ft)	Map Northing (usft)	Map Easting (usft)	Latitude	Longitude
0.00	0.00	0.00	0.00	0.00	0.00	14,366,367.73	880,742.71	39.528356993°N	107.693992990°W
Wasatch									
100.00	0.00	0.00	100.00	0.00	0.00	14,366,367.73	880,742.71	39.528356993°N	107.693992990°W
200.00	0.00	0.00	200.00	0.00	0.00	14,366,367.73	880,742.71	39.528356993°N	107.693992990°W
300.00	0.00	0.00	300.00	0.00	0.00	14,366,367.73	880,742.71	39.528356993°N	107.693992990°W
400.00	0.00	0.00	400.00	0.00	0.00	14,366,367.73	880,742.71	39.528356993°N	107.693992990°W
500.00	0.00	0.00	500.00	0.00	0.00	14,366,367.73	880,742.71	39.528356993°N	107.693992990°W
600.00	0.00	0.00	600.00	0.00	0.00	14,366,367.73	880,742.71	39.528356993°N	107.693992990°W
700.00	0.00	0.00	700.00	0.00	0.00	14,366,367.73	880,742.71	39.528356993°N	107.693992990°W
800.00	0.00	0.00	800.00	0.00	0.00	14,366,367.73	880,742.71	39.528356993°N	107.693992990°W
900.00	0.00	0.00	900.00	0.00	0.00	14,366,367.73	880,742.71	39.528356993°N	107.693992990°W

Survey Report - Geographic

Company:	Antero Resources	Local Co-ordinate Reference:	Well Gentry B09 (111423) - Slot B9
Project:	Gentry	TVD Reference:	KB @ 5648.00ft (Original Well Elev)
Site:	Gentry B	MD Reference:	KB @ 5648.00ft (Original Well Elev)
Well:	Gentry B09 (111423)	North Reference:	Grid
Wellbore:	Gentry B09	Survey Calculation Method:	Minimum Curvature
Design:	Gentry B09 P02	Database:	EDM5000

Planned Survey

Measured Depth (ft)	Inclination (°)	Azimuth (°)	Vertical Depth (ft)	+N/-S (ft)	+E/-W (ft)	Map Northing (usft)	Map Easting (usft)	Latitude	Longitude
1,000.00	0.00	0.00	1,000.00	0.00	0.00	14,366,367.73	880,742.71	39.528356993°N	107.693992990°W
Surf Csg at 1000									
1,100.00	0.00	0.00	1,100.00	0.00	0.00	14,366,367.73	880,742.71	39.528356993°N	107.693992990°W
1,150.00	0.00	0.00	1,150.00	0.00	0.00	14,366,367.73	880,742.71	39.528356993°N	107.693992990°W
KOP 3°/30 at 1150 MD/TVD									
1,200.00	1.50	121.79	1,199.99	-0.34	0.56	14,366,367.38	880,743.26	39.528356093°N	107.693990983°W
1,300.00	4.50	121.79	1,299.85	-3.10	5.00	14,366,364.63	880,747.71	39.528348895°N	107.693974934°W
1,400.00	7.50	121.79	1,399.29	-8.61	13.89	14,366,359.12	880,756.60	39.528334519°N	107.693942878°W
1,500.00	10.50	121.79	1,498.04	-16.85	27.18	14,366,350.88	880,769.89	39.528313005°N	107.693894906°W
1,600.00	13.50	121.79	1,595.85	-27.80	44.85	14,366,339.93	880,787.56	39.528284412°N	107.693831147°W
1,700.00	16.50	121.79	1,692.43	-41.43	66.85	14,366,326.29	880,809.56	39.528248817°N	107.693751777°W
1,800.00	19.50	121.79	1,787.52	-57.71	93.11	14,366,310.02	880,835.82	39.528206318°N	107.693657013°W
1,801.57	19.55	121.79	1,789.01	-57.99	93.56	14,366,309.74	880,836.27	39.528205596°N	107.693655402°W
Hold 20° at 1802 MD/1789 TVD									
1,900.00	19.55	121.79	1,881.76	-75.34	121.55	14,366,292.39	880,864.26	39.528160299°N	107.693554399°W
2,000.00	19.55	121.79	1,976.00	-92.96	149.99	14,366,274.76	880,892.70	39.528114279°N	107.693451784°W
2,100.00	19.55	121.79	2,070.23	-110.59	178.43	14,366,257.14	880,921.14	39.528068259°N	107.693349168°W
2,200.00	19.55	121.79	2,164.47	-128.22	206.87	14,366,239.51	880,949.57	39.528022239°N	107.693246553°W
2,300.00	19.55	121.79	2,258.71	-145.84	235.31	14,366,221.88	880,978.01	39.527976219°N	107.693143938°W
2,400.00	19.55	121.79	2,352.94	-163.47	263.74	14,366,204.26	881,006.45	39.527930199°N	107.693041324°W
2,500.00	19.55	121.79	2,447.18	-181.10	292.18	14,366,186.63	881,034.89	39.527884178°N	107.692938709°W
2,600.00	19.55	121.79	2,541.42	-198.72	320.62	14,366,169.01	881,063.33	39.527838158°N	107.692836094°W
2,700.00	19.55	121.79	2,635.65	-216.35	349.06	14,366,151.38	881,091.77	39.527792137°N	107.692733480°W
2,800.00	19.55	121.79	2,729.89	-233.98	377.50	14,366,133.75	881,120.21	39.527746116°N	107.692630866°W
2,900.00	19.55	121.79	2,824.13	-251.60	405.94	14,366,116.13	881,148.65	39.527700096°N	107.692528251°W
3,000.00	19.55	121.79	2,918.36	-269.23	434.38	14,366,098.50	881,177.08	39.527654075°N	107.692425637°W
3,100.00	19.55	121.79	3,012.60	-286.86	462.81	14,366,080.87	881,205.52	39.527608054°N	107.692323023°W
3,200.00	19.55	121.79	3,106.84	-304.48	491.25	14,366,063.25	881,233.96	39.527562033°N	107.692220410°W
3,300.00	19.55	121.79	3,201.07	-322.11	519.69	14,366,045.62	881,262.40	39.527516011°N	107.692117796°W
3,400.00	19.55	121.79	3,295.31	-339.73	548.13	14,366,027.99	881,290.84	39.527469990°N	107.692015183°W
3,500.00	19.55	121.79	3,389.55	-357.36	576.57	14,366,010.37	881,319.28	39.527423969°N	107.691912569°W
3,600.00	19.55	121.79	3,483.78	-374.99	605.01	14,365,992.74	881,347.72	39.527377947°N	107.691809956°W
3,700.00	19.55	121.79	3,578.02	-392.61	633.45	14,365,975.11	881,376.15	39.527331926°N	107.691707343°W
3,800.00	19.55	121.79	3,672.26	-410.24	661.89	14,365,957.49	881,404.59	39.527285904°N	107.691604730°W
3,900.00	19.55	121.79	3,766.49	-427.87	690.32	14,365,939.86	881,433.03	39.527239882°N	107.691502117°W
4,000.00	19.55	121.79	3,860.73	-445.49	718.76	14,365,922.24	881,461.47	39.527193860°N	107.691399504°W
4,100.00	19.55	121.79	3,954.97	-463.12	747.20	14,365,904.61	881,489.91	39.527147838°N	107.691296892°W
4,200.00	19.55	121.79	4,049.20	-480.75	775.64	14,365,886.98	881,518.35	39.527101816°N	107.691194279°W
4,300.00	19.55	121.79	4,143.44	-498.37	804.08	14,365,869.36	881,546.79	39.527055794°N	107.691091667°W
4,386.55	19.55	121.79	4,225.00	-513.63	828.69	14,365,854.10	881,571.40	39.527015963°N	107.691002859°W
Mesaverde									
4,400.00	19.55	121.79	4,237.68	-516.00	832.52	14,365,851.73	881,575.23	39.527009772°N	107.690989055°W
4,500.00	19.55	121.79	4,331.91	-533.63	860.96	14,365,834.10	881,603.66	39.526963750°N	107.690886443°W
4,600.00	19.55	121.79	4,426.15	-551.25	889.40	14,365,816.48	881,632.10	39.526917727°N	107.690783831°W
4,700.00	19.55	121.79	4,520.39	-568.88	917.83	14,365,798.85	881,660.54	39.526871705°N	107.690681219°W
4,800.00	19.55	121.79	4,614.62	-586.51	946.27	14,365,781.22	881,688.98	39.526825682°N	107.690578607°W
4,900.00	19.55	121.79	4,708.86	-604.13	974.71	14,365,763.60	881,717.42	39.526779659°N	107.690475996°W
5,000.00	19.55	121.79	4,803.10	-621.76	1,003.15	14,365,745.97	881,745.86	39.526733637°N	107.690373384°W
5,100.00	19.55	121.79	4,897.33	-639.39	1,031.59	14,365,728.34	881,774.30	39.526687614°N	107.690270773°W
5,193.03	19.55	121.79	4,985.00	-655.78	1,058.04	14,365,711.95	881,800.75	39.526644800°N	107.690175316°W
Price Coal									
5,200.00	19.55	121.79	4,991.57	-657.01	1,060.03	14,365,710.72	881,802.73	39.526641591°N	107.690168162°W
5,300.00	19.55	121.79	5,085.81	-674.64	1,088.47	14,365,693.09	881,831.17	39.526595568°N	107.690065551°W
5,400.00	19.55	121.79	5,180.04	-692.26	1,116.91	14,365,675.46	881,859.61	39.526549544°N	107.689962940°W

Survey Report - Geographic

Company:	Antero Resources	Local Co-ordinate Reference:	Well Gentry B09 (111423) - Slot B9
Project:	Gentry	TVD Reference:	KB @ 5648.00ft (Original Well Elev)
Site:	Gentry B	MD Reference:	KB @ 5648.00ft (Original Well Elev)
Well:	Gentry B09 (111423)	North Reference:	Grid
Wellbore:	Gentry B09	Survey Calculation Method:	Minimum Curvature
Design:	Gentry B09 P02	Database:	EDM5000

Planned Survey

Measured Depth (ft)	Inclination (°)	Azimuth (°)	Vertical Depth (ft)	+N/-S (ft)	+E/-W (ft)	Map Northing (usft)	Map Easting (usft)	Latitude	Longitude
5,469.98	19.55	121.79	5,245.99	-704.60	1,136.81	14,365,663.13	881,879.51	39.526517335°N	107.689891129°W
Drop 3°/30 at 5470 MD/5246 TVD									
5,500.00	18.65	121.79	5,274.36	-709.77	1,145.15	14,365,657.96	881,887.86	39.526503827°N	107.689861012°W
5,600.00	15.65	121.79	5,369.90	-725.30	1,170.21	14,365,642.43	881,912.92	39.526463278°N	107.689770607°W
5,700.00	12.65	121.79	5,466.86	-738.18	1,190.98	14,365,629.55	881,933.69	39.526429663°N	107.689695661°W
5,800.00	9.65	121.79	5,564.96	-748.36	1,207.41	14,365,619.37	881,950.12	39.526403074°N	107.689636379°W
5,900.00	6.65	121.79	5,663.94	-755.83	1,219.46	14,365,611.90	881,962.16	39.526383583°N	107.689592925°W
6,000.00	3.65	121.79	5,763.53	-760.55	1,227.08	14,365,607.18	881,969.79	39.526371245°N	107.689565417°W
6,100.00	0.65	121.79	5,863.44	-762.52	1,230.26	14,365,605.21	881,972.97	39.526366093°N	107.689553931°W
6,121.56	0.00	121.79	5,885.00	-762.59	1,230.37	14,365,605.14	881,973.07	39.526365926°N	107.689553558°W
Vertical at 6122 MD/5885 TVD - Top Gas - B9 Tgt									
6,200.00	0.00	121.79	5,963.44	-762.59	1,230.37	14,365,605.14	881,973.07	39.526365926°N	107.689553558°W
6,300.00	0.00	121.79	6,063.44	-762.59	1,230.37	14,365,605.14	881,973.07	39.526365926°N	107.689553558°W
6,400.00	0.00	121.79	6,163.44	-762.59	1,230.37	14,365,605.14	881,973.07	39.526365926°N	107.689553558°W
6,500.00	0.00	121.79	6,263.44	-762.59	1,230.37	14,365,605.14	881,973.07	39.526365926°N	107.689553558°W
6,600.00	0.00	121.79	6,363.44	-762.59	1,230.37	14,365,605.14	881,973.07	39.526365926°N	107.689553558°W
6,700.00	0.00	121.79	6,463.44	-762.59	1,230.37	14,365,605.14	881,973.07	39.526365926°N	107.689553558°W
6,800.00	0.00	121.79	6,563.44	-762.59	1,230.37	14,365,605.14	881,973.07	39.526365926°N	107.689553558°W
6,900.00	0.00	121.79	6,663.44	-762.59	1,230.37	14,365,605.14	881,973.07	39.526365926°N	107.689553558°W
6,946.56	0.00	121.79	6,710.00	-762.59	1,230.37	14,365,605.14	881,973.07	39.526365926°N	107.689553558°W
Cameo									
7,000.00	0.00	121.79	6,763.44	-762.59	1,230.37	14,365,605.14	881,973.07	39.526365926°N	107.689553558°W
7,100.00	0.00	121.79	6,863.44	-762.59	1,230.37	14,365,605.14	881,973.07	39.526365926°N	107.689553558°W
7,200.00	0.00	121.79	6,963.44	-762.59	1,230.37	14,365,605.14	881,973.07	39.526365926°N	107.689553558°W
7,300.00	0.00	121.79	7,063.44	-762.59	1,230.37	14,365,605.14	881,973.07	39.526365926°N	107.689553558°W
7,400.00	0.00	121.79	7,163.44	-762.59	1,230.37	14,365,605.14	881,973.07	39.526365926°N	107.689553558°W
7,500.00	0.00	121.79	7,263.44	-762.59	1,230.37	14,365,605.14	881,973.07	39.526365926°N	107.689553558°W
7,600.00	0.00	121.79	7,363.44	-762.59	1,230.37	14,365,605.14	881,973.07	39.526365926°N	107.689553558°W
7,700.00	0.00	121.79	7,463.44	-762.59	1,230.37	14,365,605.14	881,973.07	39.526365926°N	107.689553558°W
7,800.00	0.00	121.79	7,563.44	-762.59	1,230.37	14,365,605.14	881,973.07	39.526365926°N	107.689553558°W
7,846.56	0.00	121.79	7,610.00	-762.59	1,230.37	14,365,605.14	881,973.07	39.526365926°N	107.689553558°W
Rollins									
7,900.00	0.00	121.79	7,663.44	-762.59	1,230.37	14,365,605.14	881,973.07	39.526365926°N	107.689553558°W
8,000.00	0.00	121.79	7,763.44	-762.59	1,230.37	14,365,605.14	881,973.07	39.526365926°N	107.689553558°W
8,071.56	0.00	121.79	7,835.00	-762.59	1,230.37	14,365,605.14	881,973.07	39.526365926°N	107.689553558°W
TD at 8072 MD/7835 TVD									

Design Targets

Target Name	Dip Angle (°)	Dip Dir. (°)	TVD (ft)	+N/-S (ft)	+E/-W (ft)	Northing (usft)	Easting (usft)	Latitude	Longitude
- hit/miss target									
- Shape									
B9 Tgt	0.00	360.00	5,885.00	-762.59	1,230.37	14,365,605.14	881,973.07	39.526365926°N	107.689553558°W
- plan hits target center									
- Circle (radius 20.00)									

Casing Points

Measured Depth (ft)	Vertical Depth (ft)	Name	Casing Diameter (in)	Hole Diameter (in)
1,000.00	1,000.00	Surf Csg at 1000	5.50	6.00

Survey Report - Geographic

Company:	Antero Resources	Local Co-ordinate Reference:	Well Gentry B09 (111423) - Slot B9
Project:	Gentry	TVD Reference:	KB @ 5648.00ft (Original Well Elev)
Site:	Gentry B	MD Reference:	KB @ 5648.00ft (Original Well Elev)
Well:	Gentry B09 (111423)	North Reference:	Grid
Wellbore:	Gentry B09	Survey Calculation Method:	Minimum Curvature
Design:	Gentry B09 P02	Database:	EDM5000

Formations					
Measured Depth (ft)	Vertical Depth (ft)	Name	Lithology	Dip (°)	Dip Direction (°)
0.00	0.00	Wasatch			
4,386.55	4,225.00	Mesaverde			
5,193.03	4,985.00	Price Coal			
6,121.56	5,885.00	Top Gas			
6,946.56	6,710.00	Cameo			
7,846.56	7,610.00	Rollins			

Plan Annotations					
Measured Depth (ft)	Vertical Depth (ft)	Local Coordinates		Comment	
		+N/-S (ft)	+E/-W (ft)		
1150	1150	0	0	KOP 3°/30 at 1150 MD/TVD	
1802	1789	-58	94	Hold 20° at 1802 MD/1789 TVD	
5470	5246	-705	1137	Drop 3°/30 at 5470 MD/5246 TVD	
6122	5885	-763	1230	Vertical at 6122 MD/5885 TVD	
8072	7835	-763	1230	TD at 8072 MD/7835 TVD	

Checked By: _____	Approved By: _____	Date: _____
-------------------	--------------------	-------------