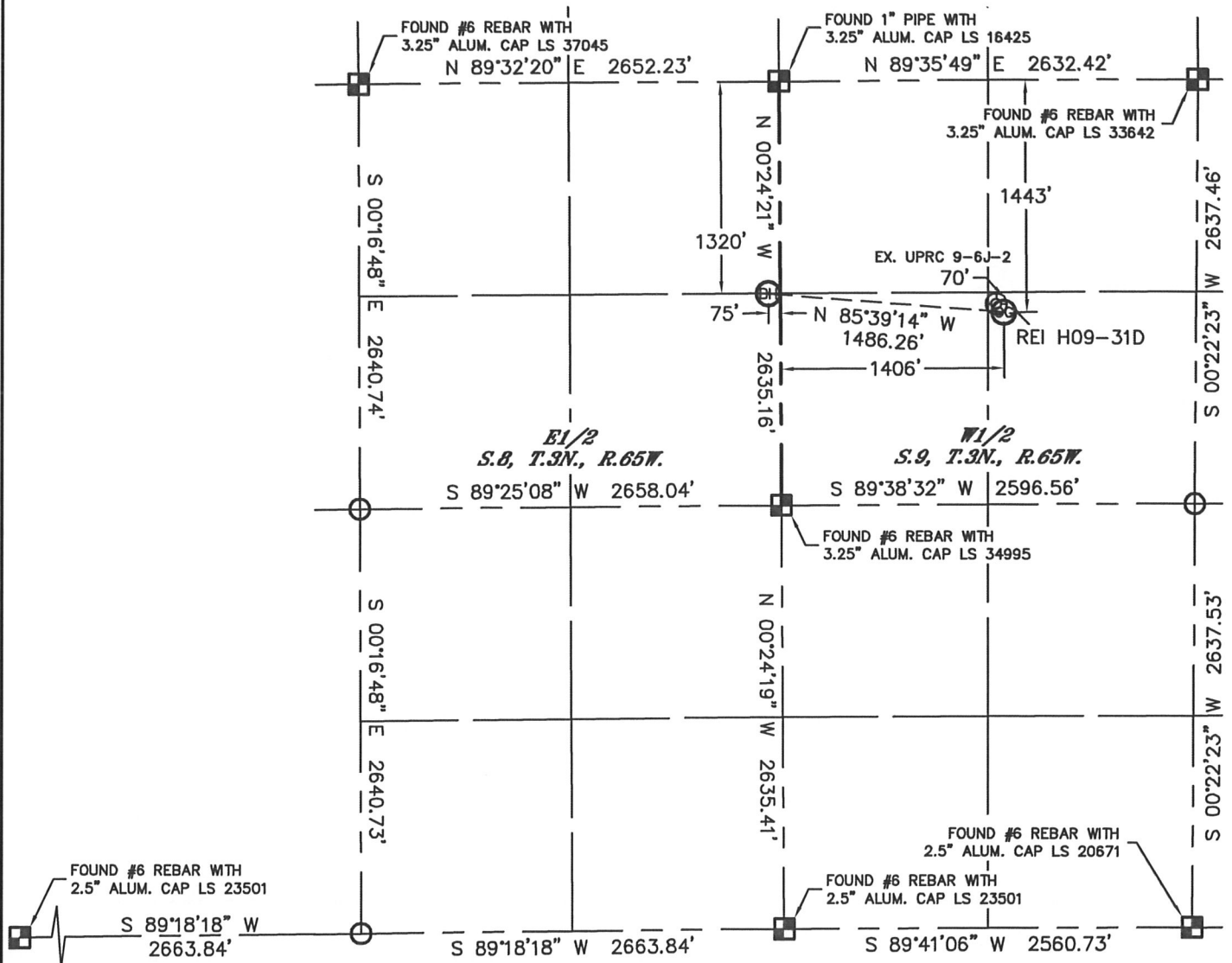


Lat40°, Inc. 1635 Foxtrail Drive, Suite 325 Loveland, CO 970-776-3321

# WELL LOCATION CERTIFICATE

THIS MAP DOES NOT REPRESENT A BOUNDARY SURVEY

SECTION: 9  
TOWNSHIP: 3N  
RANGE: 65W



In accordance with a request from Tony Patterson with Noble Energy Inc. Lat40°, Inc. has determined the surface location of the REI H09-31D to be 1443' from the NORTH line and 1406' from the WEST line as measured at right angles from the section lines of Section 9, Township 3 North, Range 65 West and the bottom hole to be 1320' from the NORTH line and 75' from the EAST line as measured at right angles from the section lines of Section 8, Township 3 North, Range 65 West of the Sixth Principal Meridian, County of Weld, State of Colorado.

I hereby state that this Well Location Certificate was prepared by me, or under my direct supervision, that the fieldwork was completed on 7/18/11, for and on behalf of Noble Energy Inc. That this is not a Land Survey Plat or an Improvement Survey Plat, and that it is not to be relied upon for establishment of fence, building, or other future improvement lines.

## NOTE:

- 1) Bearings shown are Grid Bearings of the Colorado State Plane Coordinate System, North Zone, North American Datum 1983/2007. The lineal dimensions as contained herein are based upon the "U.S. Survey Foot."
- 2) Ground elevations are based on an observed GPS elevation (NAVD 1988 DATUM).
- 3) NEAREST EXISTING WELL: UPRC 9-6J-2, 70'
- 4) IMPROVEMENTS: See LOCATION DRAWING for all visible improvements within 400' of disturbed area.
- 5) SURFACE USE: RANGELAND
- 6) INSTRUMENT OPERATOR: ADAM KELLY

## NOTE

According to Colorado law, you must commence any legal action based upon any defect in this W.L.C. within three years after you discover such defect. In no event, may any action based upon any defect in this survey be commenced more than ten years after the date of the certificate shown hereon. (13-80-105 C.R.S.)

## LEGEND

- = ALIQUOT MONUMENT AS DESCRIBED
- = CALCULATED POSITION

SURFACE LOCATION  
LATITUDE: 40.24316°N  
LONGITUDE: 104.67268°W  
PDOP: 1.2  
ELEV: 4830'  
1/4, 1/4: SE1/4NW1/4  
NEAREST PROPERTY LINE: 160' SW

BOTTOM HOLE  
LATITUDE: 40.24351°N  
LONGITUDE: 104.67798°W



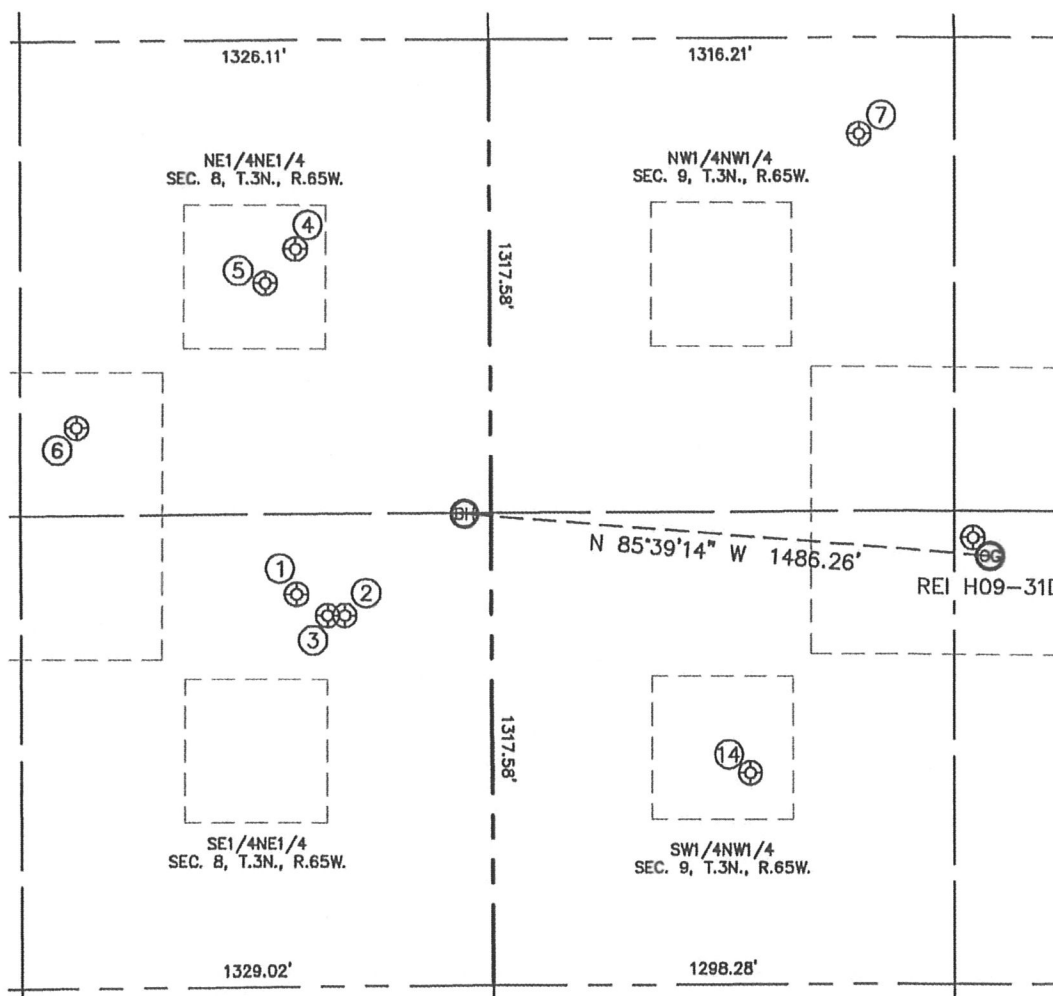
Brian T. Brinkman—On behalf of Lat40°, Inc.  
Colorado Licensed Professional  
Land Surveyor No. 38175

PROJECT#: 2011172

# SITE SKETCH

REI H09-31D

SECTION: 9  
TOWNSHIP: 3N  
RANGE: 65W



①

ARISTOCRAT ANGUS  
42-8  
SE1/4NE1/4  
1542' FNL  
550' FEL  
LAT-40.24290°N  
LONG-104.67969°W  
PDOP: 4.4  
ELEV: 4877'

②

ARISTOCRAT ANGUS  
7-3-8  
SE1/4NE1/4  
1602' FNL  
413' FEL  
LAT-40.24274°N  
LONG-104.67920°W  
PDOP: 2.4  
ELEV: 4875'

③

ARISTOCRAT ANGUS  
6-4-8  
SE1/4NE1/4  
1602' FNL  
463' FEL  
LAT-40.24274°N  
LONG-104.67937°W  
PDOP: 1.6  
ELEV: 4876'

④

ARISTOCRAT ANGUS  
41-8A  
NE1/4NE1/4  
582' FNL  
550' FEL  
LAT-40.24554°N  
LONG-104.67968°W  
PDOP: 1.6  
ELEV: 4864'

⑤

ARISTOCRAT ANGUS  
41-8  
NE1/4NE1/4  
676' FNL  
634' FEL  
LAT-40.24528°N  
LONG-104.67998°W  
PDOP: 1.6  
ELEV: 4863'

⑥

BB DRAW H8-1J  
NE1/4NE1/4  
1075' FNL  
1169' FEL  
LAT-40.24419°N  
LONG-104.68190°W  
PDOP: 1.6  
ELEV: 4898'

⑦

UPRC 9-4J  
NW1/4NW1/4  
268' FNL  
1049' FWL  
LAT-40.24639°N  
LONG-104.67395°W  
PDOP: 2.2  
ELEV: 4841'

⑭

UPRR 39 PAN AM D 1  
SW1/4NW1/4  
2046' FNL  
730' FWL  
LAT-40.24151°N  
LONG-104.67511°W  
PDOP: 1.4  
ELEV: 4867'

